

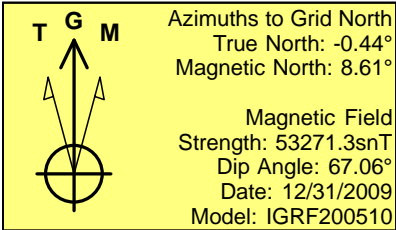
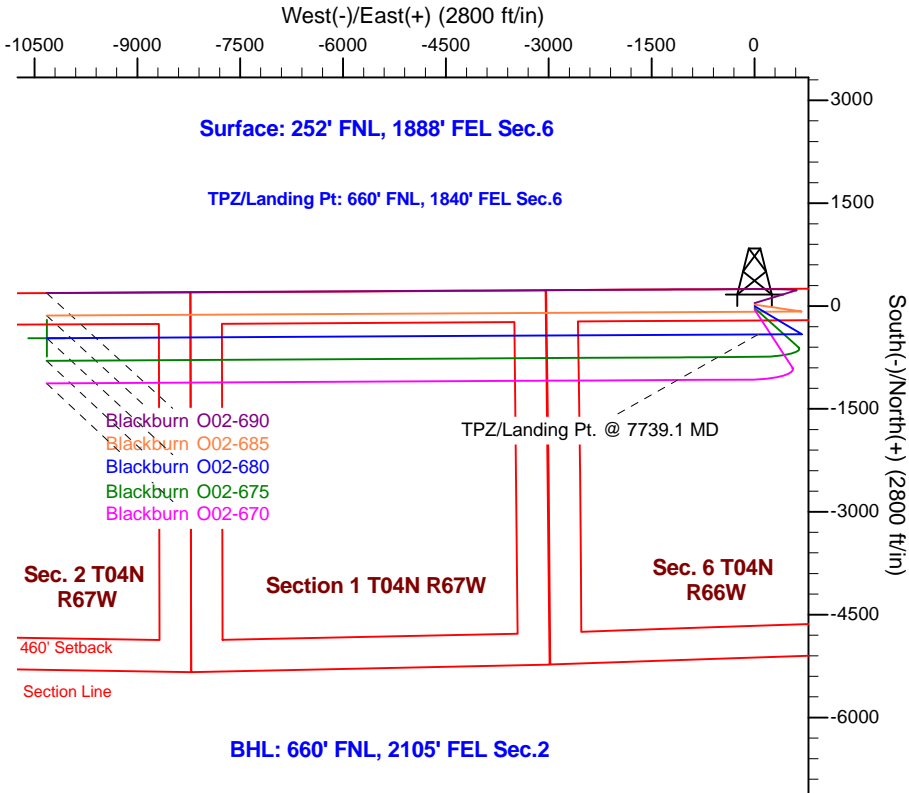
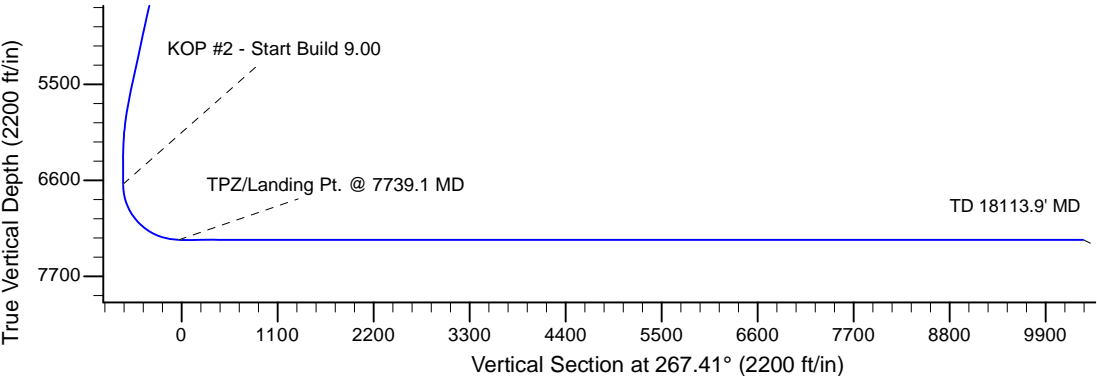
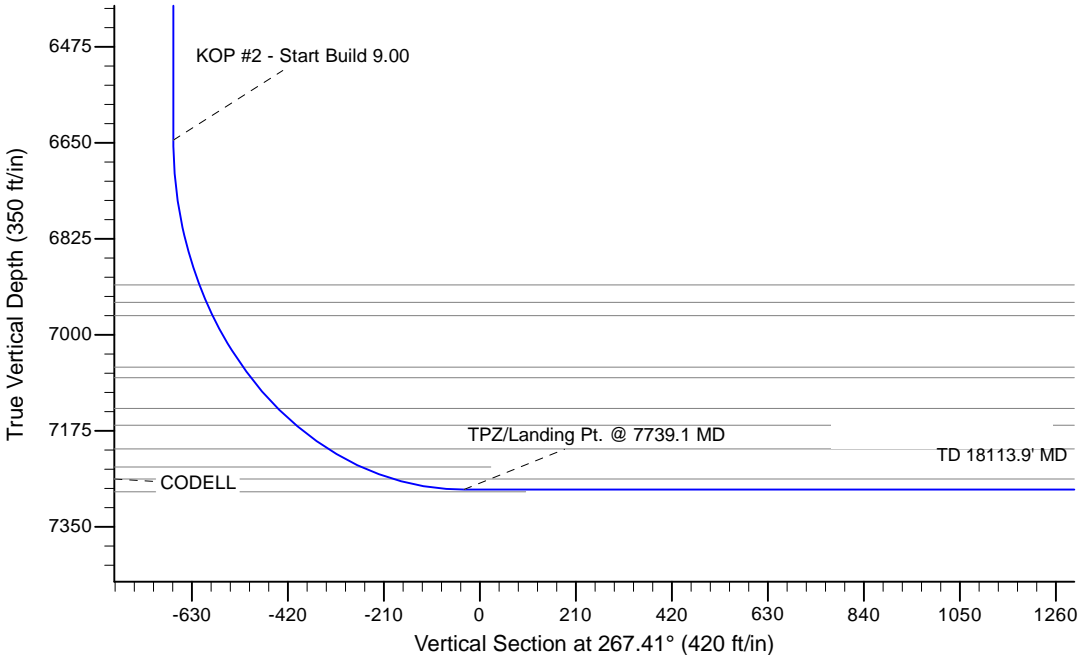
Project: Wattenberg Field
Site: K (Section 6-T04N-R66W) Weld County, CO
Well: Blackburn O02-680
Wellbore: Original Drilling
Design: APD - Rev 0

Northern Region Drilling - Working

Geodetic System: US State Plane 1983
Datum: North American Datum 1983
Ellipsoid: GRS 1980
Zone: Colorado Northern Zone
System Datum: Mean Sea Level

SECTION DETAILS

| Sec | MD | Inc | Azi | TVD | +N/-S | +E/-W | Dleg | TFace | Vsect | Target |
|-----|---------|-------|--------|--------|--------|----------|------|--------|---------|---|
| 1 | 0.0 | 0.00 | 0.00 | 0.0 | 0.0 | 0.0 | 0.00 | 0.00 | 0.0 | |
| 2 | 2500.0 | 0.00 | 0.00 | 2500.0 | 0.0 | 0.0 | 0.00 | 0.00 | 0.0 | |
| 3 | 3219.9 | 14.40 | 120.72 | 3212.4 | -46.0 | 77.4 | 2.00 | 120.72 | -75.2 | |
| 4 | 5723.8 | 14.40 | 120.72 | 5637.6 | -364.0 | 612.6 | 0.00 | 0.00 | -595.6 | |
| 5 | 6443.8 | 0.00 | 0.00 | 6350.0 | -410.0 | 690.0 | 2.00 | 180.00 | -670.8 | |
| 6 | 6739.1 | 0.00 | 0.00 | 6645.4 | -410.0 | 690.0 | 0.00 | 0.00 | -670.8 | |
| 7 | 7739.1 | 90.00 | 269.70 | 7282.0 | -413.3 | 53.4 | 9.00 | 269.70 | -34.7 | |
| 8 | 18113.9 | 90.00 | 269.70 | 7282.0 | -466.9 | -10321.3 | 0.00 | 0.00 | 10331.8 | Blackburn O02-680 BHL 660'FNL, 2105'FEL |



| WELL DETAILS: Blackburn O02-680 | | | | | |
|---|----------|------------|-----------------------------|-----------|-------------|
| Ground Level: 4779.0 | | | | | |
| | Northing | | Easting | Latitude | Longitude |
| 0.0 | 0.0 | 1370382.44 | 3189822.82 | 40.348100 | -104.818950 |
| Plan: APD - Rev 0 (Blackburn O02-680/Original Drilling) | | | | | |
| Created By: Shailey Jewell | | | Date: 13:08, August 04 2016 | | |
| OK to submit with 2A as per Noble Drilling | | | | | |
| 8/4/2016 1:11 | | | | | |