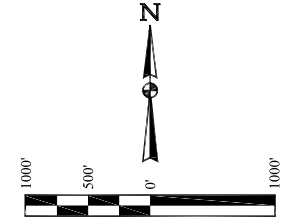
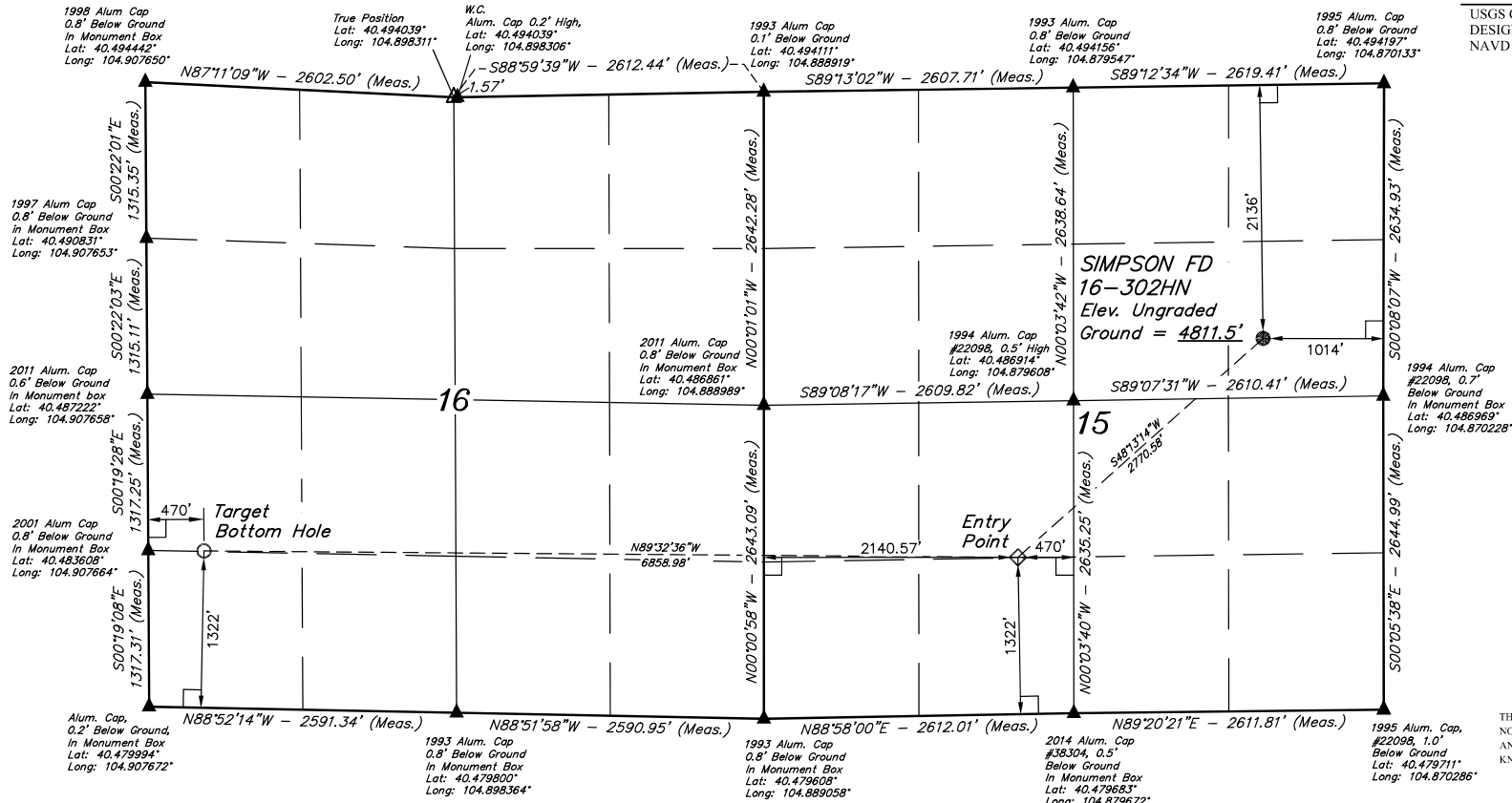


T6N, R67W, 6th P.M.

GREAT WESTERN OIL & GAS COMPANY

SIMPSON FD 16-302HN
SE 1/4 NE 1/4, SECTION 15, T6N, R67W, 6th P.M.
WELD COUNTY, COLORADO

BASIS OF BEARINGS
BASIS OF ELEVATION
USGS COOPERATIVE BASE NETWORK CONTROL STATION,
DESIGNATION "VERMILYEA". NGS DATA SHEET LISTS THE
NAVD 88 ELEVATION AS BEING 5026 FEET.



CERTIFICATE OF RECORD
THIS IS TO CERTIFY THAT THE ABOVE IS A TRUE AND CORRECT COPY OF THE ORIGINAL SURVEY RECORD AND THAT THE SAME ARE TRUE AND CORRECT TO THE BEST OF MY KNOWLEDGE AND BELIEF.
REGISTERED LAND SURVEYOR
REGISTRATION NO. 38285
STATE OF COLORADO
JUL 16 2016

REV: 3 10-13-16 C.C. (SHL & TITLE CHANGE)

LEGEND:

- = 90° SYMBOL
- = PROPOSED WELLHEAD.
- = TARGET BOTTOM HOLE.
- ◇ = ENTRY POINT
- ▲ = SECTION CORNERS LOCATED.
- △ = SECTION CORNERS RE-ESTABLISHED.
(Not Set on Ground.)

PDOP = 1.3

| NAD 83 (TARGET BOTTOM HOLE) | NAD 83 (ENTRY POINT) | NAD 83 (SURFACE LOCATION) |
|--|--|--|
| LATITUDE = 40°29'00.91" (40.483586) | LATITUDE = 40°28'59.87" (40.483297) | LATITUDE = 40°29'17.95" (40.488319) |
| LONGITUDE = 104°54'21.51" (104.905975) | LONGITUDE = 104°52'52.79" (104.881331) | LONGITUDE = 104°52'25.87" (104.873853) |
| NAD 27 (TARGET BOTTOM HOLE) | NAD 27 (ENTRY POINT) | NAD 27 (SURFACE LOCATION) |
| LATITUDE = 40°29'00.98" (40.483606) | LATITUDE = 40°28'59.94" (40.483317) | LATITUDE = 40°29'18.02" (40.488339) |
| LONGITUDE = 104°54'19.61" (104.905444) | LONGITUDE = 104°52'50.89" (104.880803) | LONGITUDE = 104°52'23.98" (104.873328) |

UINTECH
ENGINEERING & LAND SURVEYING

UELS, LLC
Corporate Office * 85 South 200 East
Vernal, UT 84078 * (435) 789-1017

| | |
|-----------------------------------|----------------------|
| SURVEYED BY: DALLAS NIELSEN, D.W. | DATE: 03-13-15 |
| DRAWN BY: J.W. | DATE DRAWN: 12-29-14 |
| SCALE: 1" = 1000' | |
| WELL LOCATION PLAT | |