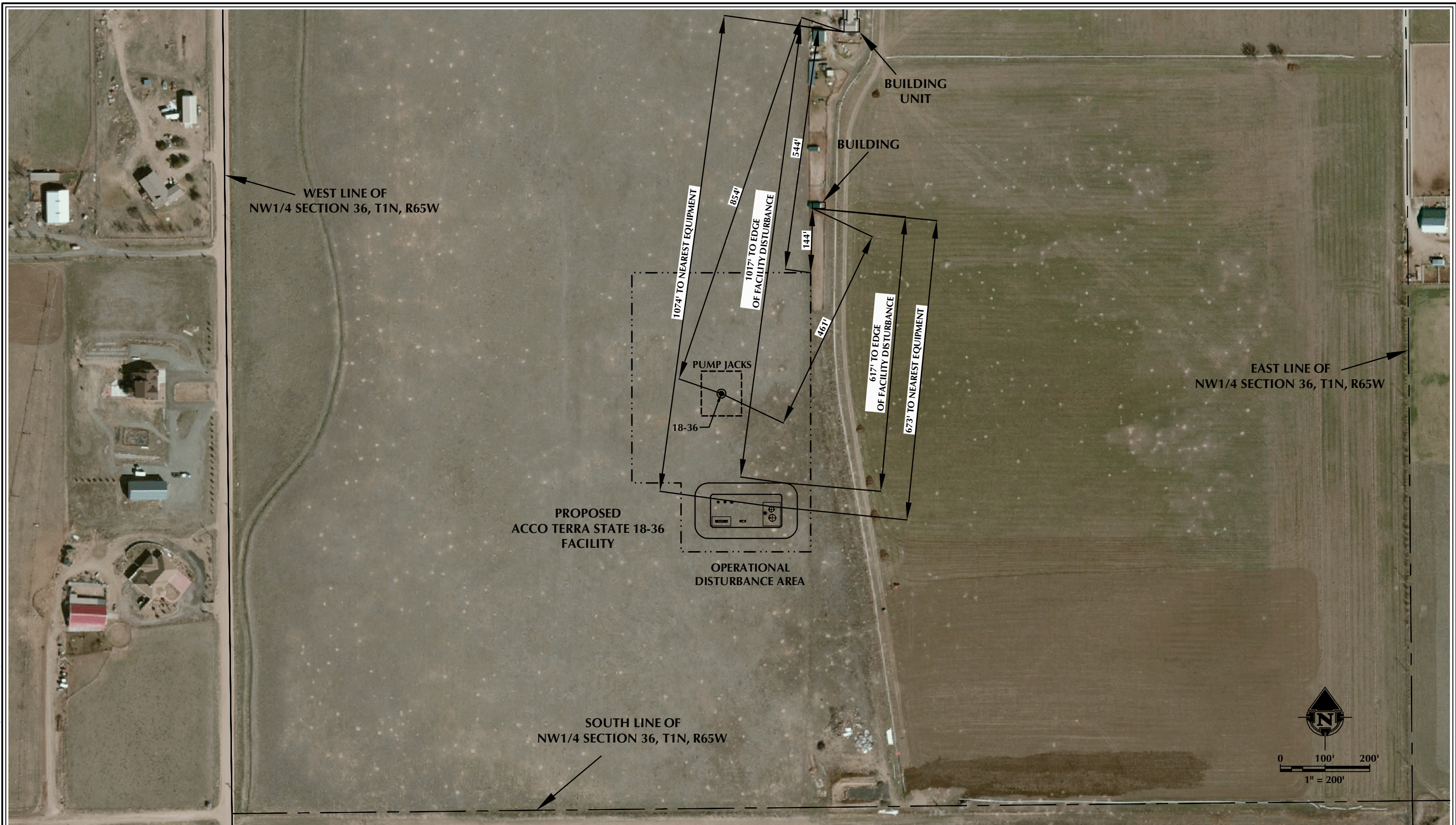


K:\ANADARKO\2016\2016\_73\_ACCO\_TERRA\_T1N\_R65W\_SEC\_36.DWG\ACCO\_TERRA.dwg, 10/11/2016 10:31:20 PM, jake



**NOTES:**

1. EQUIPMENT PLACEMENT IS APPROXIMATE AND SUBJECT TO MINOR MODIFICATION DUE TO SPECIFIC CIRCUMSTANCES.

**DATA SOURCES:**

- AERIAL COURTESY OF ESRI, INC.
- WATER WELLS COURTESY OF COLORADO DIVISION OF WATER RESOURCES



LOVELAND OFFICE  
1635 Foxtrail Drive, Suite 204  
Loveland, Colorado 80538  
Phone 970-776-4331

SHERIDAN OFFICE  
1095 Saberton Avenue  
Sheridan, Wyoming 82801  
Phone 307-674-0609

CONSULTING, LLC



SCALE:  
DATE SURVEYED:  
DATE:  
DRAFTER:  
REVISED:

1" = 200'  
9/15/16  
10/6/16  
CDJ

**FACILITY LAYOUT AERIAL**  
ACCO TERRA STATE 18-36  
LOCATED IN SECTION 36, T1N, R65W, 6TH P.M.  
WELD COUNTY, COLORADO



NOTES:



0



CREATION DATE: 7/15/16

DRAWN BY: RWC

APPROVED: JTK

DWG. No.:	
-----------	--

**ACCO-STOR-01-PP-2020 REV 0**

SCALE: 1"=12'-0"

SHEET No.
-----------

