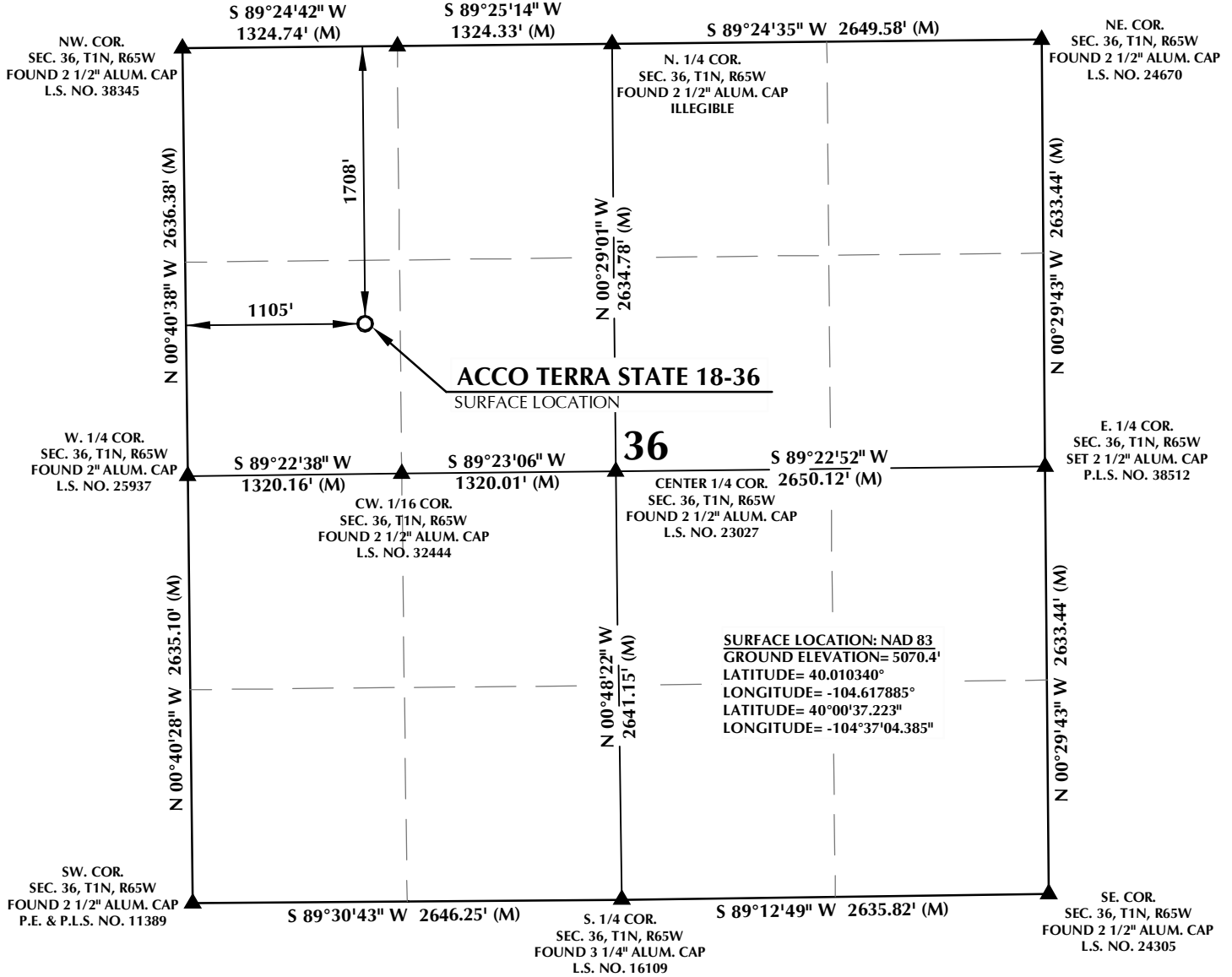


W. 1/16 COR.  
SEC. 25 & SEC. 36, T1N, R65W  
FOUND 2 1/2" ALUM. CAP  
L.S. NO. 23027

# T1N, R65W



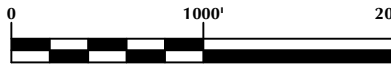
**CERTIFICATE OF SURVEYOR:**

THIS IS TO CERTIFY THAT THE ABOVE PLAT WAS PREPARED FROM FIELD NOTES OF ACTUAL SURVEY MADE BY ME OR UNDER MY SUPERVISION AND THAT THESE ARE TRUE AND CORRECT TO THE BEST OF MY KNOWLEDGE AND BELIEF. THIS CERTIFICATE DOES NOT REPRESENT A LAND SURVEY PLAT OR IMPROVEMENT SURVEY PLAT AS DEFINED BY C.R.S. 38-51-102 AND CANNOT BE RELIED UPON TO DETERMINE OWNERSHIP.

*Randall K. French*  
 RANDALL K. FRENCH  
 PROFESSIONAL LAND SURVEYOR  
 COLORADO REGISTRATION NUMBER 38512  
 9/15/16

**NOTICE:**  
 ACCORDING TO COLORADO STATE LAW YOU MUST COMMENCE ANY LEGAL ACTION BASED UPON ANY DEFECT IN THIS SURVEY WITHIN THREE YEARS AFTER YOU FIRST DISCOVER SUCH DEFECT. IN NO EVENT MAY ANY ACTION BASED UPON ANY DEFECT IN THIS SURVEY BE COMMENCED MORE THAN TEN YEARS FROM THE DATE ON THE CERTIFICATION SHOWN HEREON.

GRID



SCALE: 1" = 1000'

**NOTES:**

- ▲ INDICATES SECTION CORNER
- INDICATES CALCULATED CORNER ELEVATION BASED ON NAVD88 (GEOID12B)
- BASIS OF BEARING DERIVED FROM COLORADO COORDINATE SYSTEM OF 1983 NORTH ZONE.
- ALL MEASURED DISTANCES ARE GRID.
- COMBINED SCALE FACTOR: .99972792 CALCULATED FROM THE NE. CORNER OF SECTION 36
- OPERATOR: ROB WILSON / PDOP= 1.3
- SEE ADDENDUM TO WELL LOCATION CERTIFICATE FOR EXISTING IMPROVEMENTS WITHIN 500' OF THE WELL PAD.
- WELL FOOTAGES ARE MEASURED AT RIGHT ANGLES TO THE SECTION LINES.

**WELL PAD - ACCO TERRA STATE 18-36**

**ACCO TERRA STATE 18-36  
 WELL LOCATION CERTIFICATE  
 1708' FNL & 1105' FWL SWNW (SURFACE)  
 LOCATED IN SECTION 36  
 T1N, R65W, 6TH P.M.  
 WELD COUNTY, COLORADO**

**Kerr-McGee Oil &  
 Gas Onshore L.P.  
 1099 18th Street  
 Denver, Colorado 80202**



**CONSULTING, LLC**

**SHERIDAN OFFICE**  
 1095 Saberton Avenue  
 Sheridan, Wyoming 82801  
 Phone 307-674-0609

**LOVELAND OFFICE**  
 1635 Foxtrail Drive, Suite 204  
 Loveland, Colorado 80538  
 Phone 970-776-4331

DRAFTED BY:	LMO	CHECKED BY:	RKF
DATE DRAFTED:	9/15/16	DATE SURVEYED:	9/15/16
REVISED:		FILE NAME:	16-73