

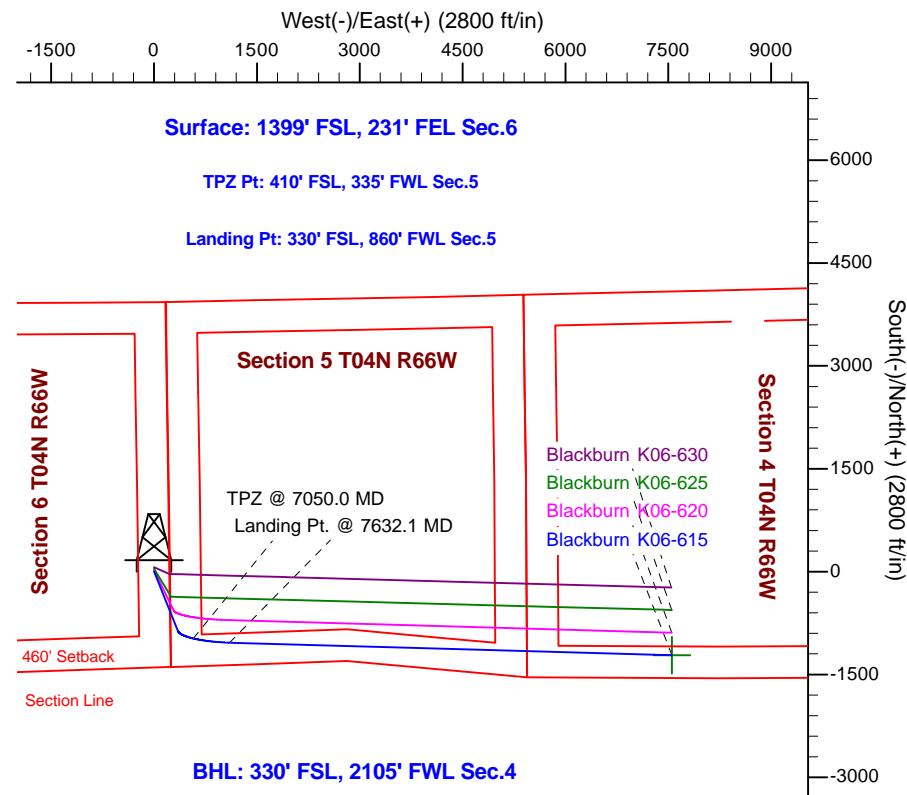
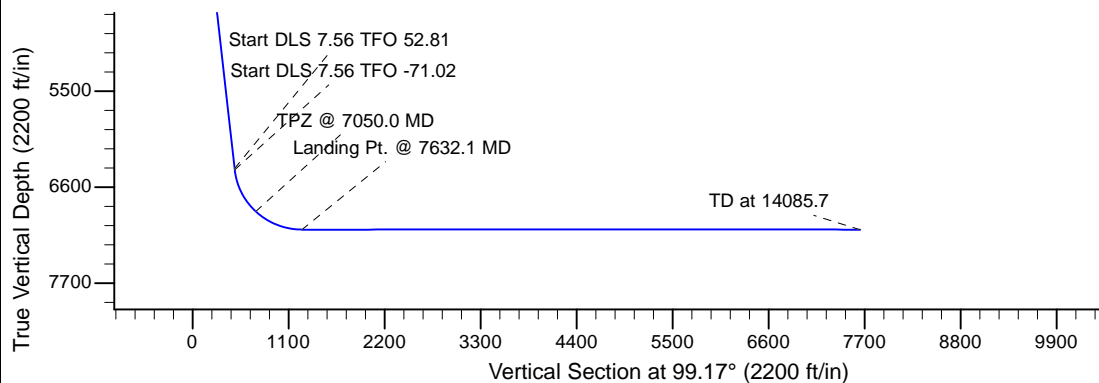
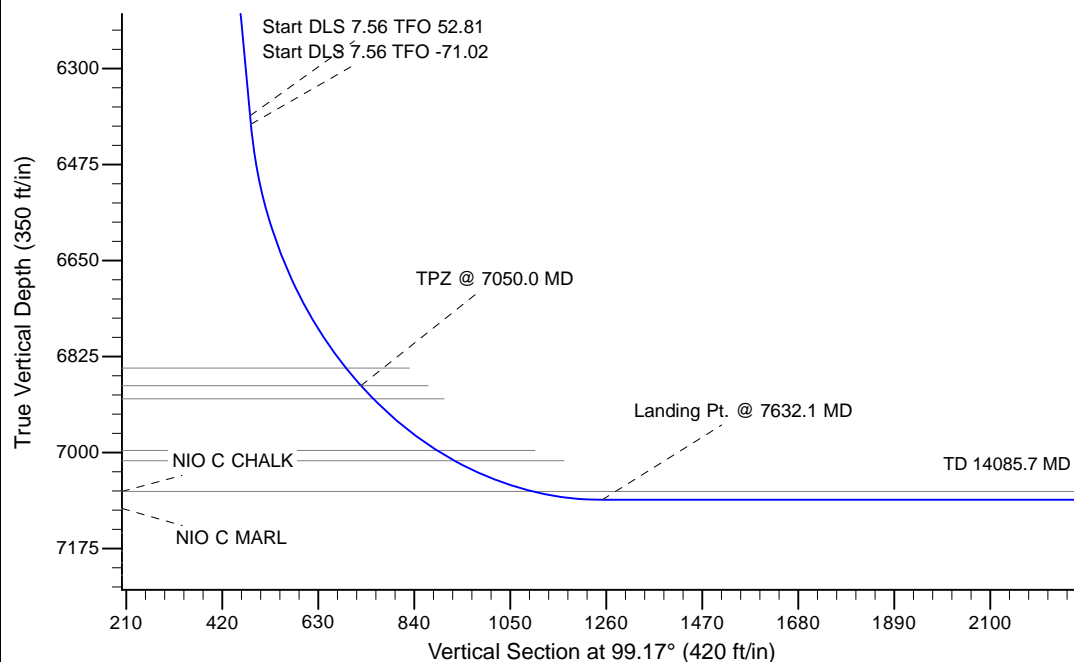
Project: Wattenberg Field
 Site: K (Section 6-T04N-R66W) Weld County, CO
 Well: Blackburn K06-615
 Wellbore: Original Drilling
 Design: APD - Rev 0

Northern Region Drilling - Working

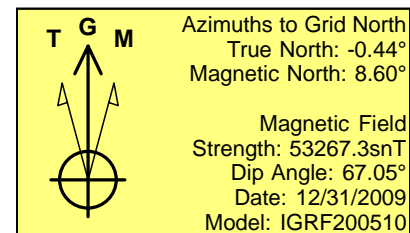
Geodetic System: US State Plane 1983
 Datum: North American Datum 1983
 Ellipsoid: GRS 1980
 Zone: Colorado Northern Zone
 System Datum: Mean Sea Level

SECTION DETAILS

Sec	MD	Inc	Azi	TVD	+N/-S	+E/-W	Dleg	TFace	VSec	Target
1	0.0	0.00	0.00	0.0	0.0	0.0	0.00	0.00	0.0	
2	1800.0	0.00	0.00	1800.0	0.0	0.0	0.00	0.00	0.0	
3	2412.5	12.25	158.00	2407.8	-60.5	24.4	2.00	158.00	33.8	
4	6483.3	12.25	158.00	6386.0	-861.3	348.0	0.00	0.00	480.8	
5	6499.0	13.00	162.19	6401.2	-864.5	349.2	7.56	52.81	482.5	
6	7632.1	90.00	91.63	7086.0	-1035.0	1100.0	7.56	-71.02	1250.9	
7	14085.7	90.00	91.64	7086.0	-1219.1	7551.0	0.00	90.00	7648.8	Blackburn K06-615 BHL 330'FSL, 2105'FWL



BHL: 330' FSL, 2105' FWL Sec.4



WELL DETAILS: Blackburn K06-615

Ground Level: 4705.0					
	Northing	Easting	Latitude	Longitude	
0.0	0.0	1366712.51	3191532.01	40.337990	-104.812920

Plan: APD - Rev 0 (Blackburn K06-615/Original Drilling)

Created By: Shailey Jewell Date: 15:51, August 05 2016

OK to submit with 2A as per Noble Drilling
 8/5/2016 3:54