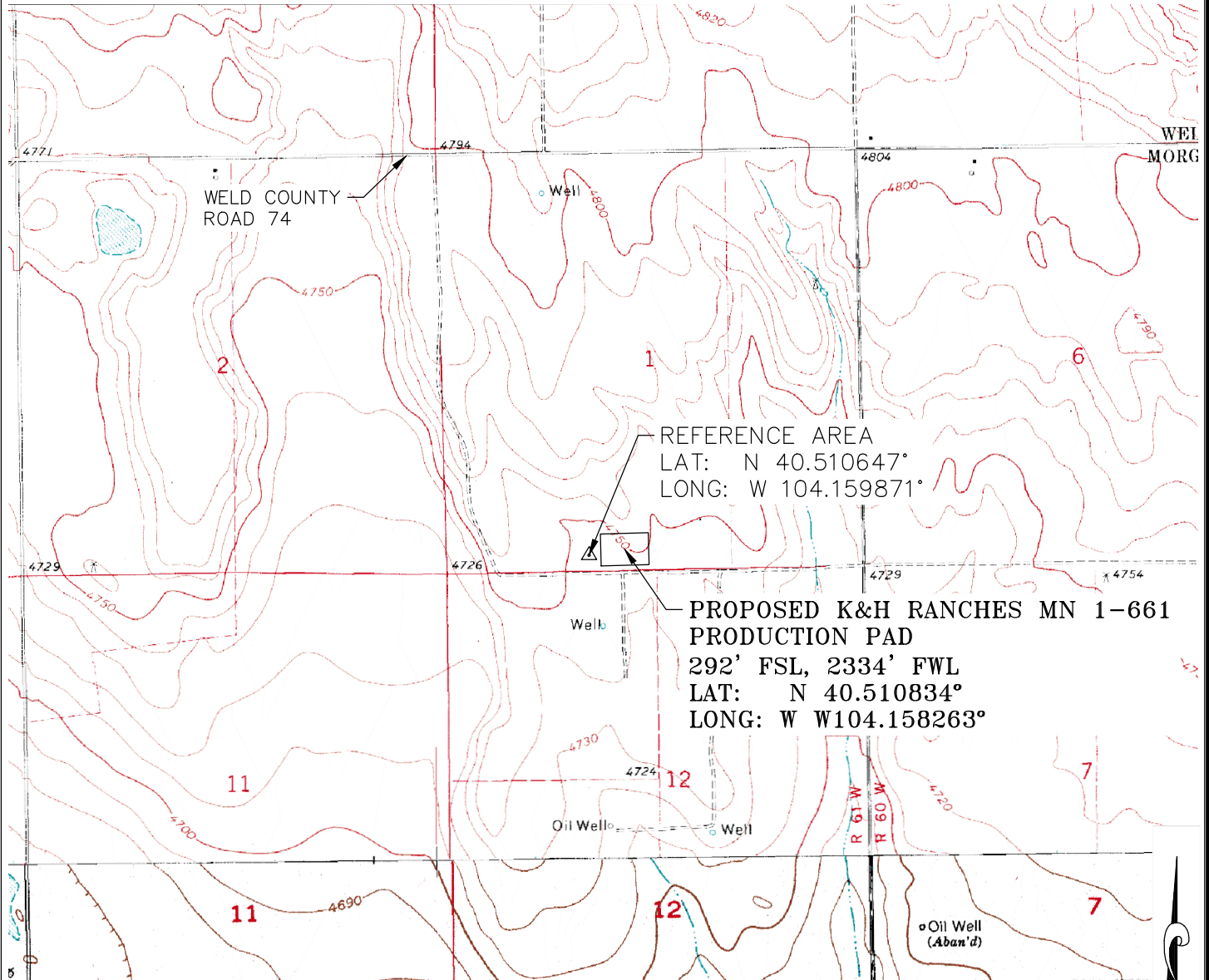




K&H RANCHES MN 1-661 PRODUCTION PAD

S1/2SW1/4 SEC.1 & N1/2NW1/4 SEC. 12, T. 6 N., R. 61 W. OF THE 6TH. P.M.
WELD COUNTY, COLORADO



NOTE:

1) LATs AND LONGs ARE BASE ON NAD 83, COLORADO NORTH ZONE AND ARE IN DECIMAL DEGREE FORMAT.



ECLIPSE
Surveying, Inc.

1874 Six Lazy K Rd., New Castle, CO 81647
(970) 876-5939

REV. DATE:

SCALE:

DATE:

SHEET:

PROJECT:

DFT:

1" = 2000'

11/03/16

1 OF 1

S1-661

JAK



600 17th Street, Suite 1600 North, Denver, CO 80202

K&H RANCHES MN 1-661PAD
REFERENCE AREA PLAT