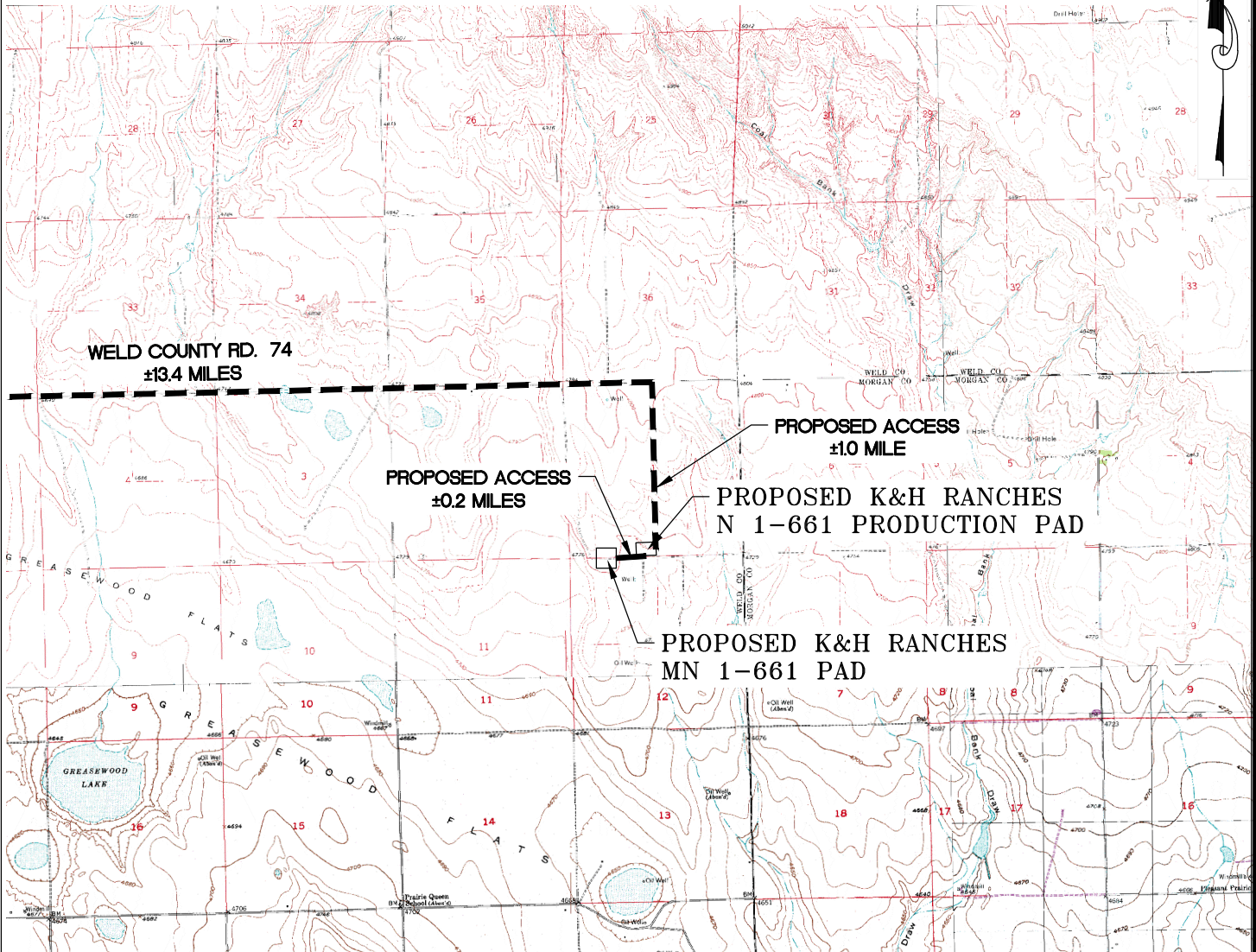




## K&H RANCHES MN 1-661 PAD

S1/2SW1/4 SEC.1 & N1/2NW1/4 SEC. 12, T. 6 N., R. 61 W. OF THE 6TH. P.M.  
WELD COUNTY, COLORADO



### DIRECTIONS TO LOCATION:

FROM LUCERNE, CO, PROCEED EASTERLY ALONG HIGHWAY 392 FOR ±16.0 MILES TO THE INTERSECTION OF HIGHWAY 392 AND WELD COUNTY ROAD 74. TURN RIGHT ONTO WELD COUNTY ROAD 74 AND PROCEED EAST FOR ±13.4 MILES TO THE PROPOSED ACCESS ROAD. TURN RIGHT ONTO THE PROPOSED ACCESS ROAD AND PROCEED SOUTH FOR ±1.0 MILE TO THE K&H RANCHES N 1-661 PRODUCTION PAD. TURN RIGHT AND PROCEED WEST ±0.2 MILES TO THE K&H RANCHES MN 1-661 PAD AS SHOWN HEREON.



**ECLIPSE**  
Surveying, Inc.

1874 Six Lazy K Rd., New Castle, CO 81647  
(970) 876-5939

REV. DATE: 02/08/16  
SCALE: 1" = 5000'  
DATE: 01/11/16  
SHEET: 1 OF 1  
PROJECT: S1-661  
DFT: JAK



600 17th Street, Suite 1600 North, Denver, CO 80202

**K&H RANCHES MN 1-661 PAD**  
ACCESS & VICINITY MAP