

Sonic Bond Log
Gamma-Ray
CCL

Company KERR-McGEE OIL & GAS ONSHORE LP
Well BERIG UPRR 41-35 #2
Field WATTENBERG
County WELD
State COLORADO

Company KERR-McGEE OIL & GAS ONSHORE LP
Well BERIG UPRR 41-35 #2
Field WATTENBERG
County WELD State COLORADO

Location: API # : 05-123-14758
SHL: 800' FNL 520' FEL NENE
LAT : 40.27350 LONG:-104.73670
SEC 35 TWP 4N RGE 66W
Permanent Datum GL Elevation 4795'
Log Measured From KB 11' Elevation K.B. 4806'
Drilling Measured From KB Elevation D.F. 4605'
G.L. 4795'

Date 12-24-2014
Run Number ONE
Depth Driller 7414'
Depth Logger 1518'
Bottom Logged Interval 1515'
Top Log Interval Surface
Open Hole Size 7 7/8"
Type Fluid WATER
Density / Viscosity 1.0
Max. Recorded Temp. 89
Estimated Cement Top 486'
Time Well Ready N/A
Time Logger on Bottom N/A
Equipment Number 3812
Location GREELEY
Recorded By J.FLORES
Witnessed By SOCORRO

Borehole Record		Tubing Record					
Run Number	Bit	From	To	Size	Weight	From	To
ONE							
TWO							

	Size	Wgt/Ft	Top	Bottom
Casing Record				
Surface String	8 5/8"	24#	0	389'
Prot. String				
Production String	4 1/2"	11.6#	0	7411'
Liner				

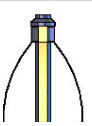
<<< Fold Here >>>

All interpretations are opinions based on inferences from electrical or other measurements and we cannot and do not guarantee the accuracy or correctness of any interpretation, and we shall not, except in the case of gross or willful negligence on our part, be liable or responsible for any loss, costs, damages, or expenses incurred or sustained by anyone resulting from any interpretation made by any of our officers, agents or employees. These interpretations are also subject to our general terms and conditions set out in our current Price Schedule.

Comments

NOT CORRELATED
LOGGED TO VERIFY CEMENT

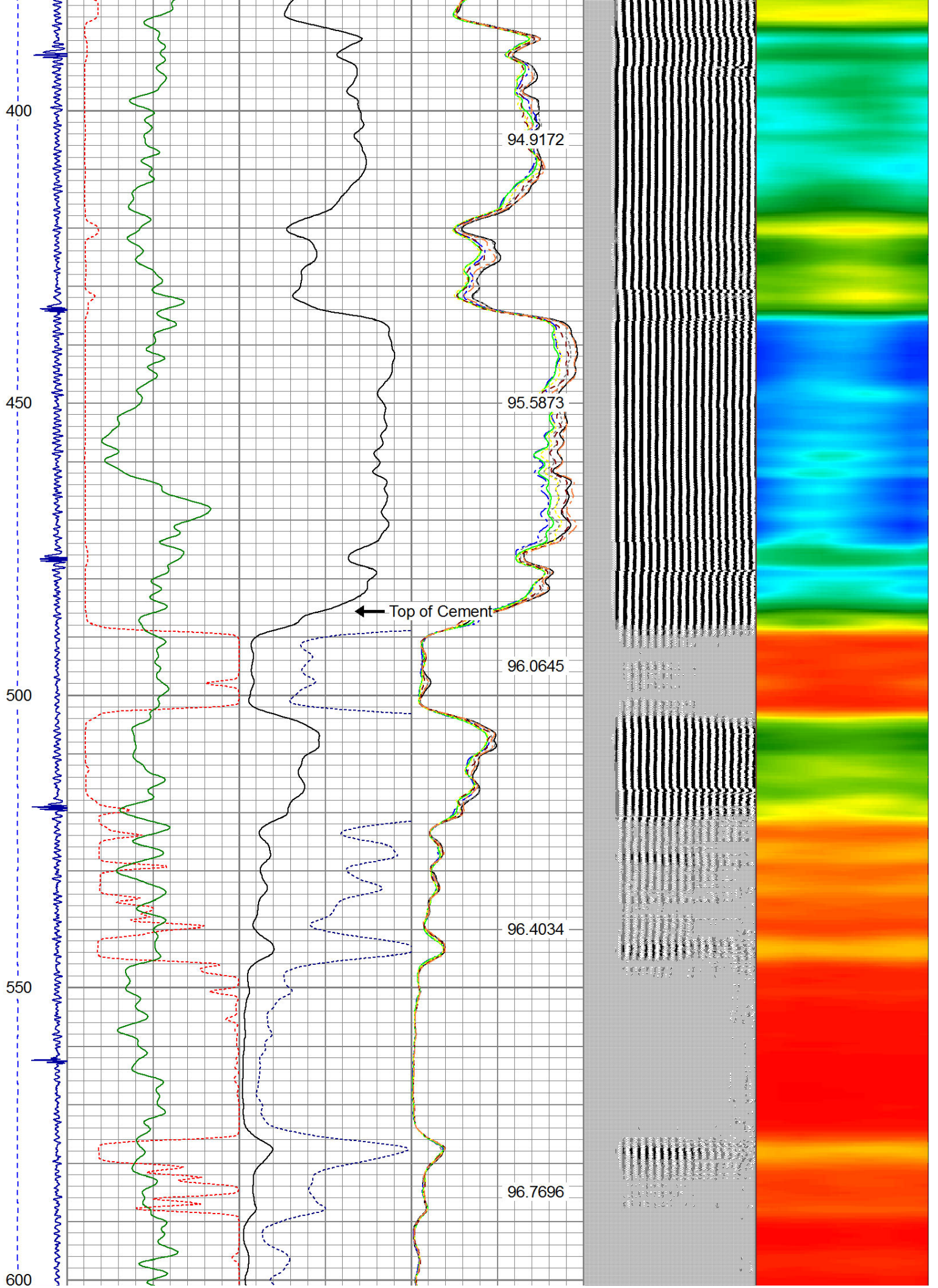
THANK YOU FOR USING WARRIOR.

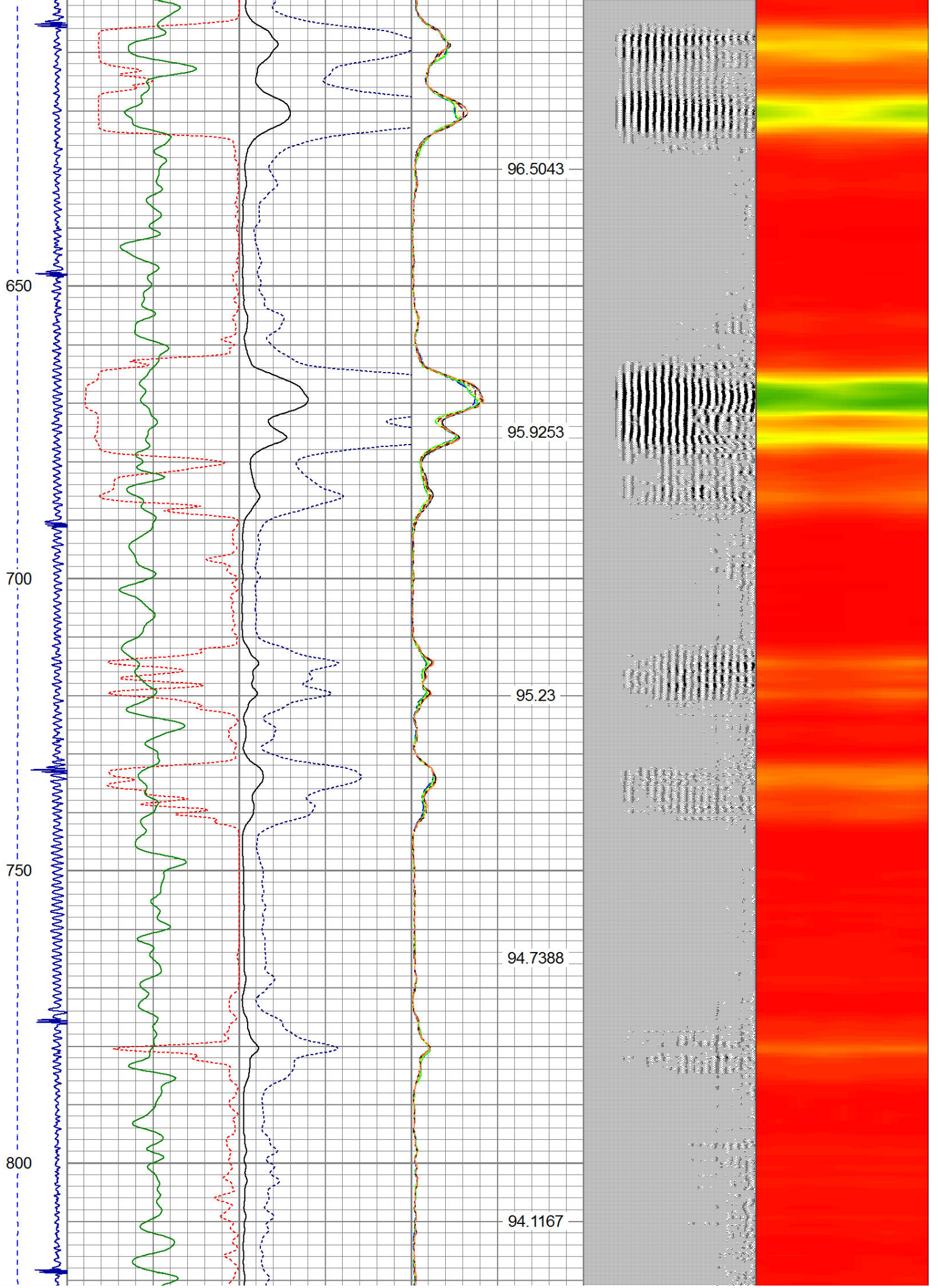
Sensor	Offset (ft)	Schematic	Description	Len (ft)	OD (in)	Wt (lb)
CENT	19.08					

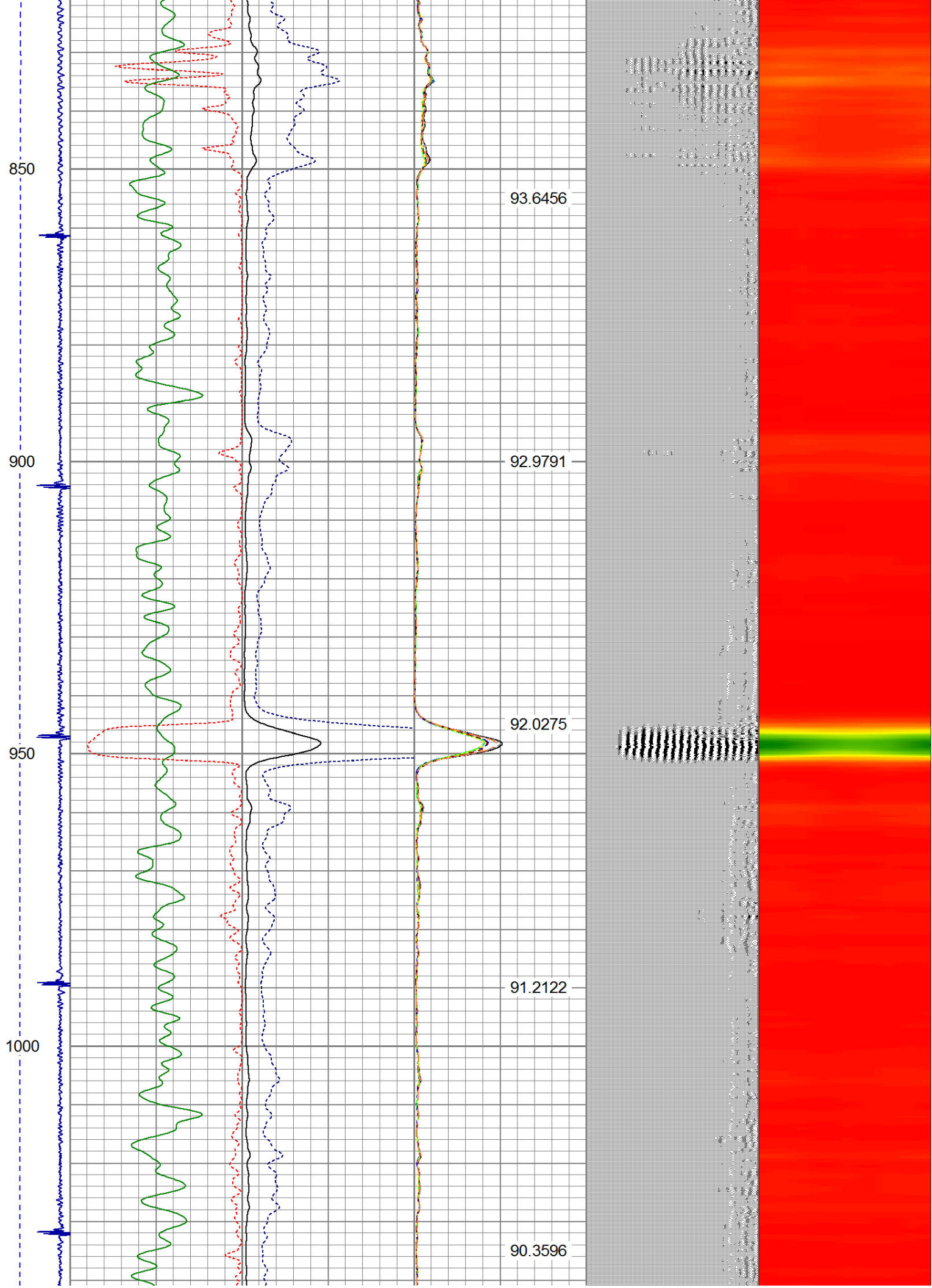
			PTS275	2.83	2.75	
HEADVOLT	16.25					
RBT	16.25					
IntTemp	14.83					
			RBT-Probe (Base) Probe Radii Bond Tool with Digital Telemetry	8.92	2.75	90.00
WVF3FT	11.58					
WVFCAL	11.58					
WVFS1	11.58					
WVFS2	11.58					
WVFS3	11.58					
WVFS4	11.58					
WVFS5	11.58					
WVFS6	11.58					
WVFS7	11.58					
WVFS8	11.58					
WVF5FT	10.58					
CNLSC	6.00		CNT-Probe_B (275) 6 bow centralizer	3.00	2.75	40.00
CNSSC	5.17					
GR	4.33					
CCL	3.64					
			GR-Probe (275) Probe 2.75"	4.33	2.75	30.00
GR	0.90					

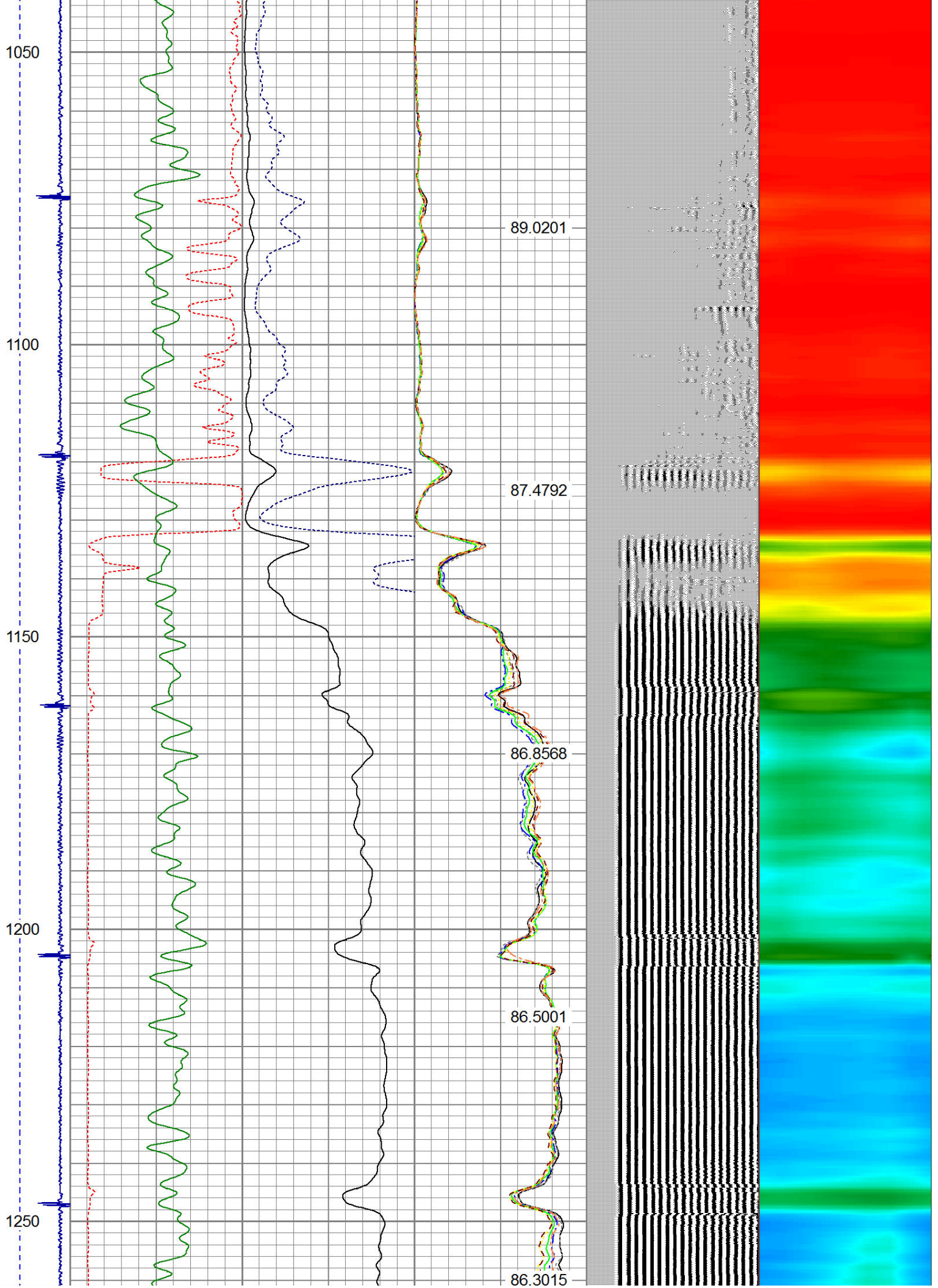
Dataset: berig uprr 41-35 #2.db: field/well/run1/pass3
 Total Length: 19.08 ft
 Total Weight: 160.00 lb
 O.D. 2.75 in

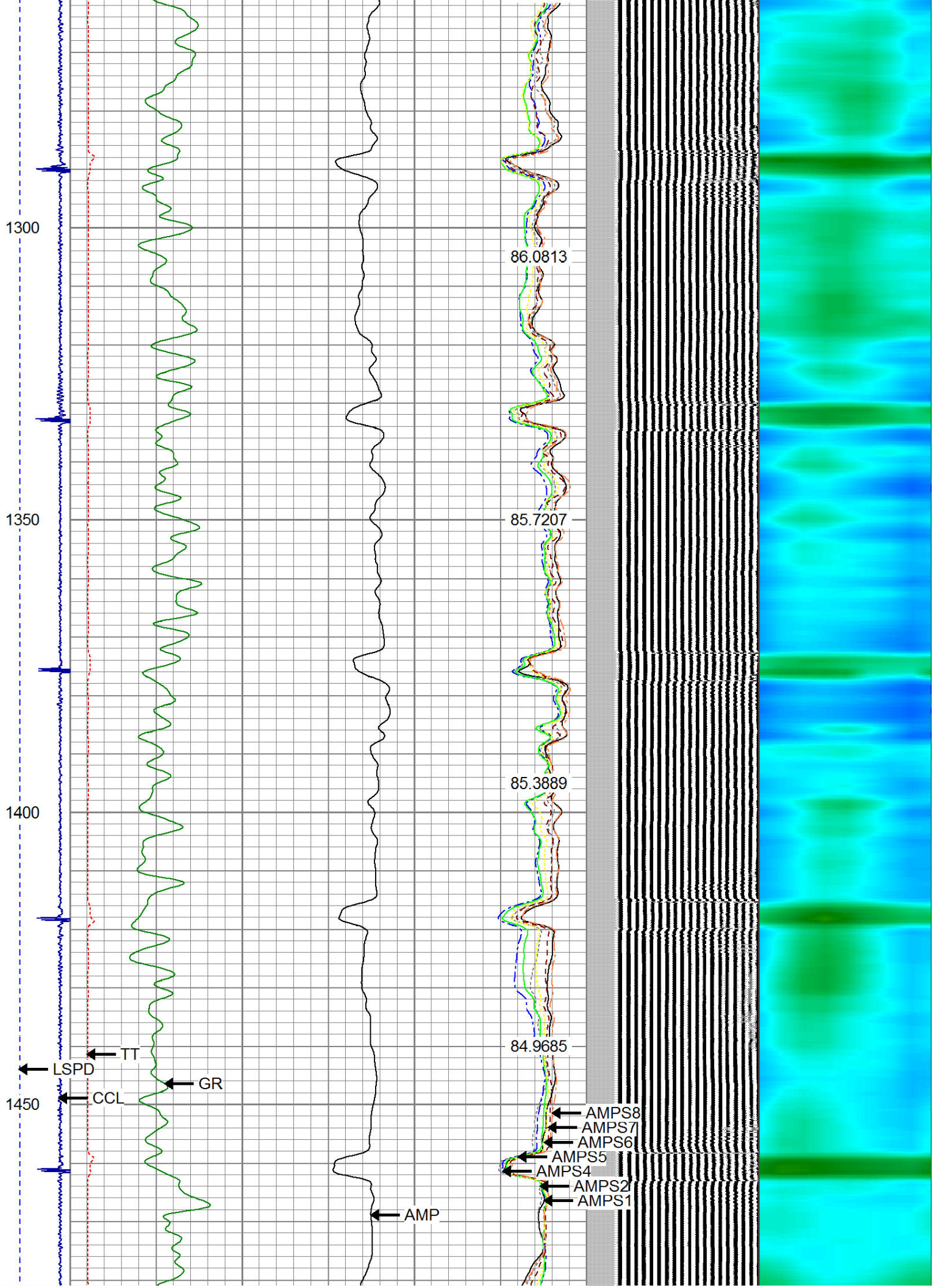
Database File: berig uprr 41-35 #2.db
 Dataset Pathname: pass3
 Presentation Format: ips_rbt

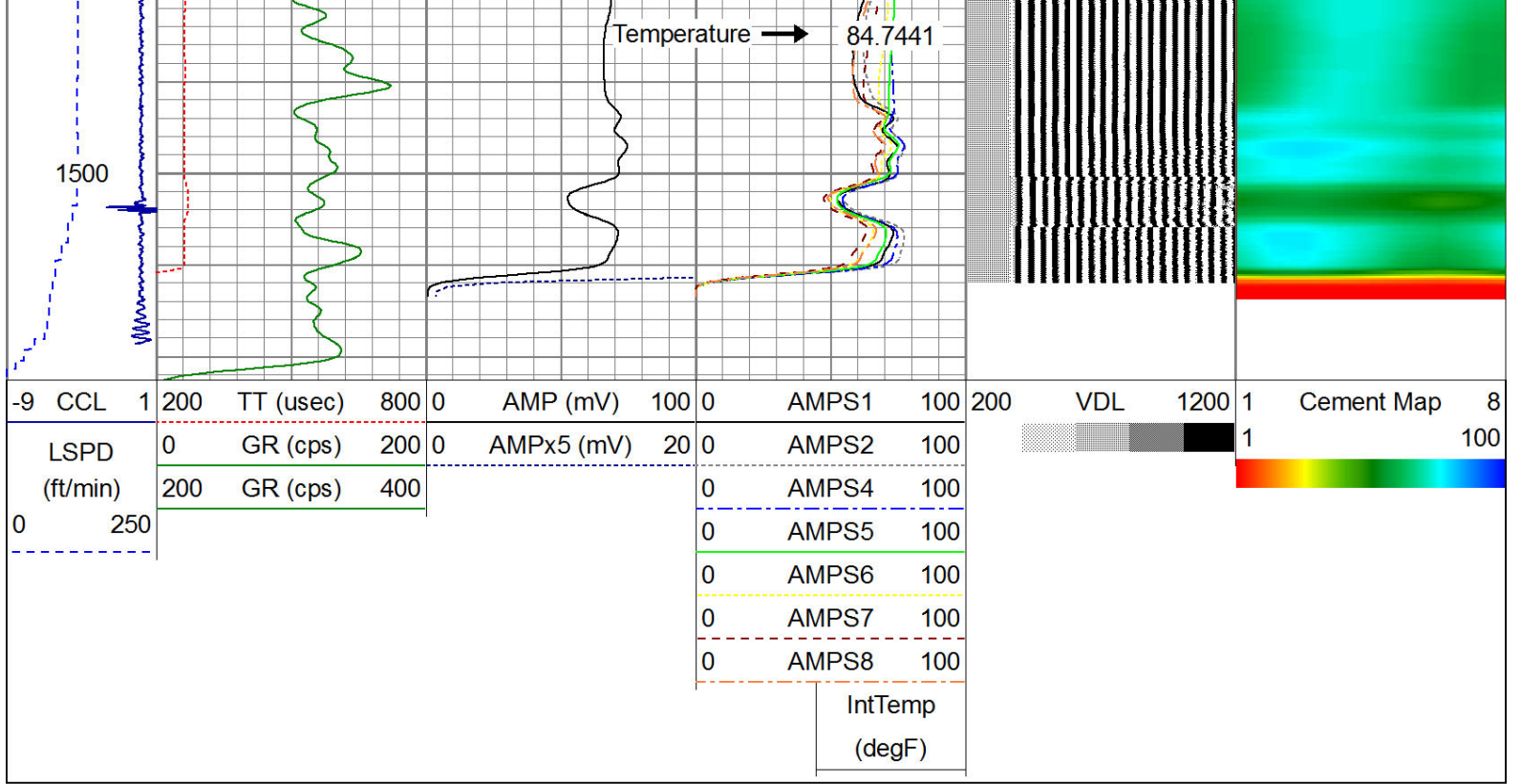












WARRIOR
ENERGY SERVICES

Company KERR-McGEE OIL & GAS ONSHORE LP
 Well BERIG UPRR 41-35 #2
 Field WATTENBERG
 County WELD
 State COLORADO