



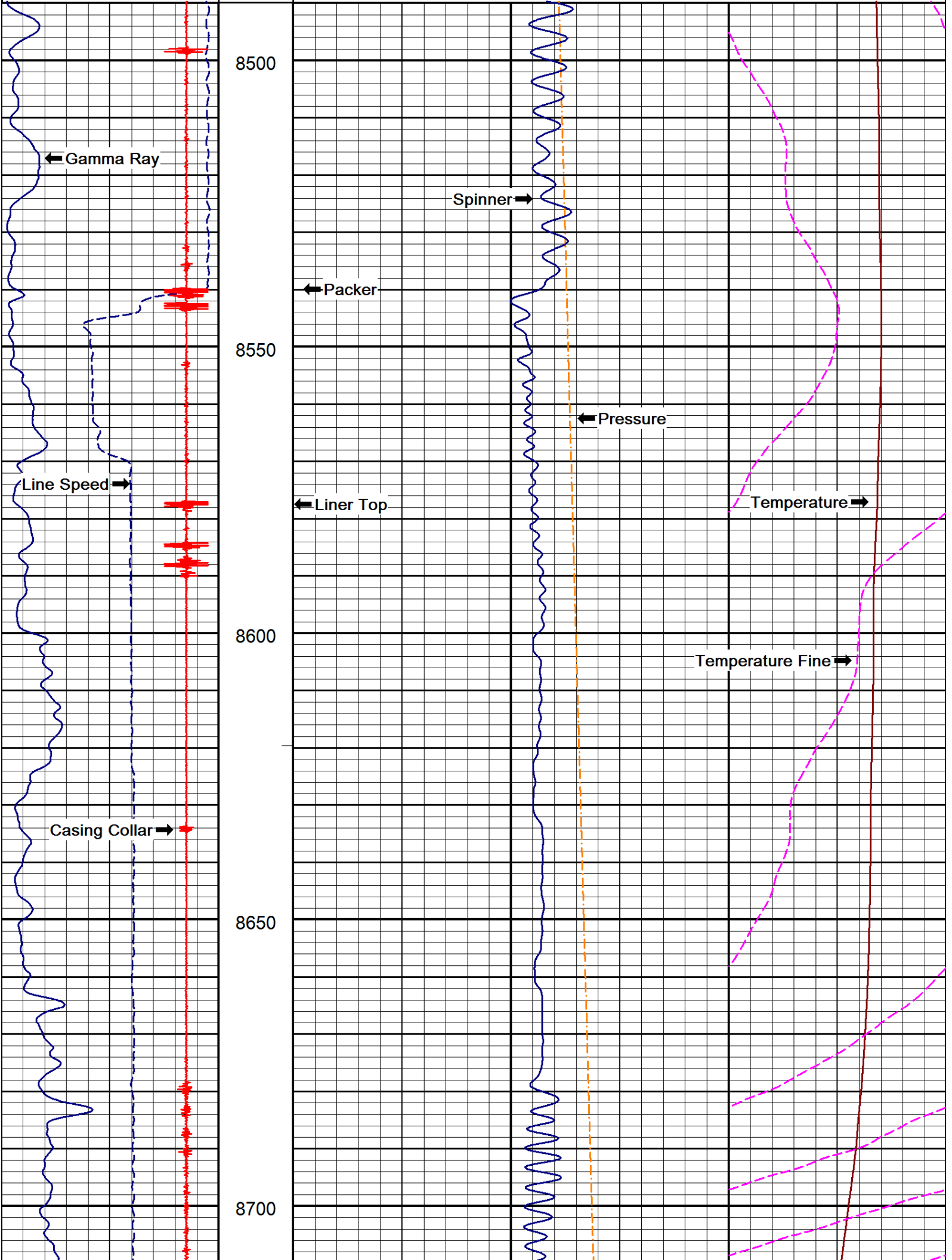
Injection Profile

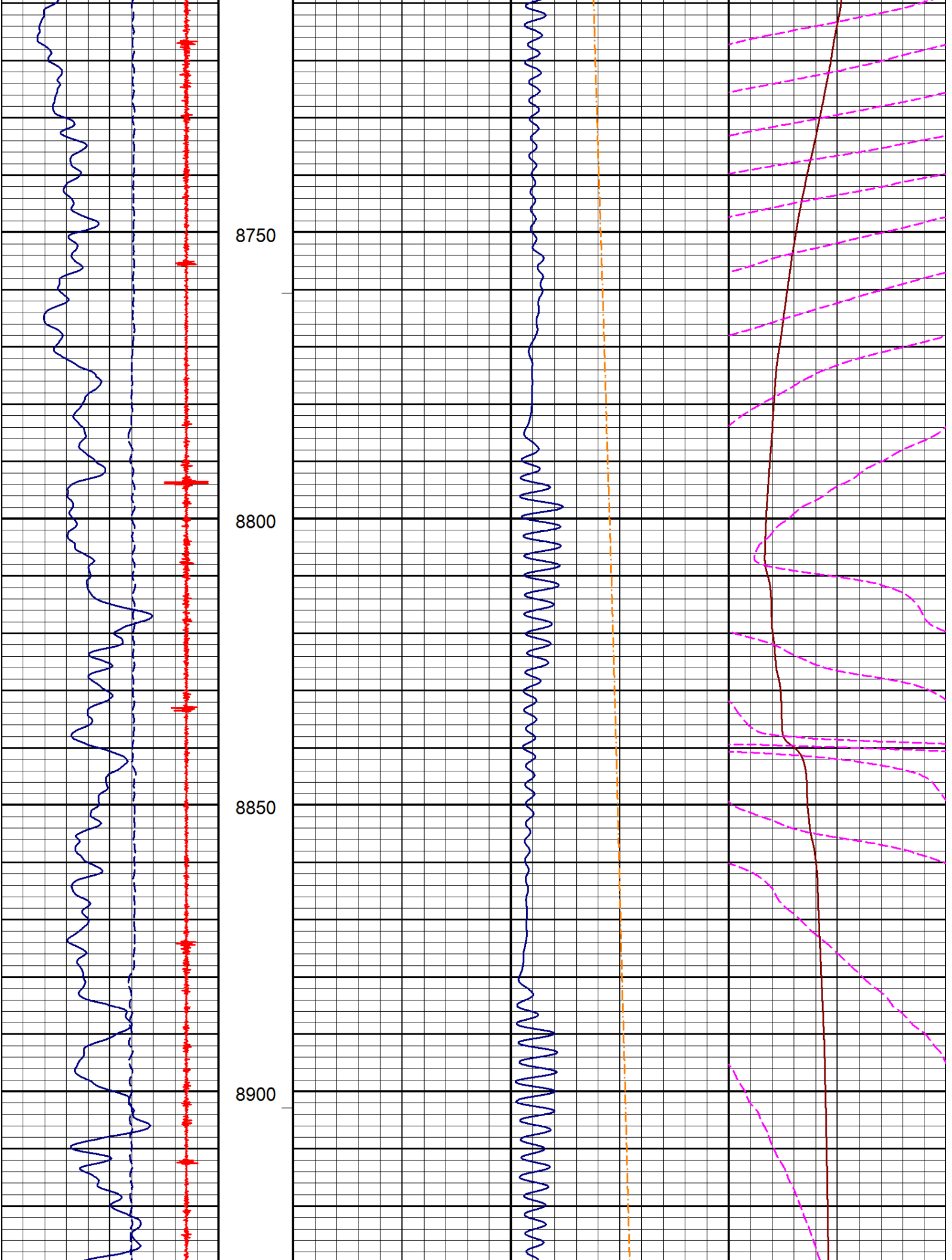
File No:	COMPANY Expedition Water Solutions			
LSD.	WELL	EVMS #2		
SEC.	26	FIELD	Clay Basket	
TWP.	8N	STATE	Colorado	COUNTRY USA
RGE.	60W	Location	40.63974/-104.06681	Other Services:
WEST		API Serial No.	05-123-39770	
		WELL L.C. #		
Permanent Datum	Ground Level	Elevation	4654	Elev K.B. 4671
Log Meas. From	Kelly Bushing	Ft. Above Datum	17	Elev D.F. 4670
Drilling Meas. From	Kelly Bushing			Elev G.L. 4654
Date	11-01-2016	Perforations		
Number of Runs	4	Shot Density	No. Shots	From To
Type of Log	Injection Profile			
Depth Reached	9773			
First Reading	9773			
Last Reading	8500			
Feet Measured	1283			
PBTD by Logger	9783			
Bottom Driller	9834	Gun Type		
Well Head Pressure	1400	Charge Type		
Fluid Level	Surface	Casing		
Fluid Type	Waste Water	Size	Weight	From To
Unit # / Location	HD 325 / Ft. Lupton	4.5"	11.6	Surface 8540
Recorded By	A. Ellsworth	4.5"	Slotted Liner	8566 9834
Witnessed By				
Other Services				
Service	Model	Type	Size	Depth
Tubing Bottom		Profile Nipple		
Junk Basket Size		Gauge Ring Size		

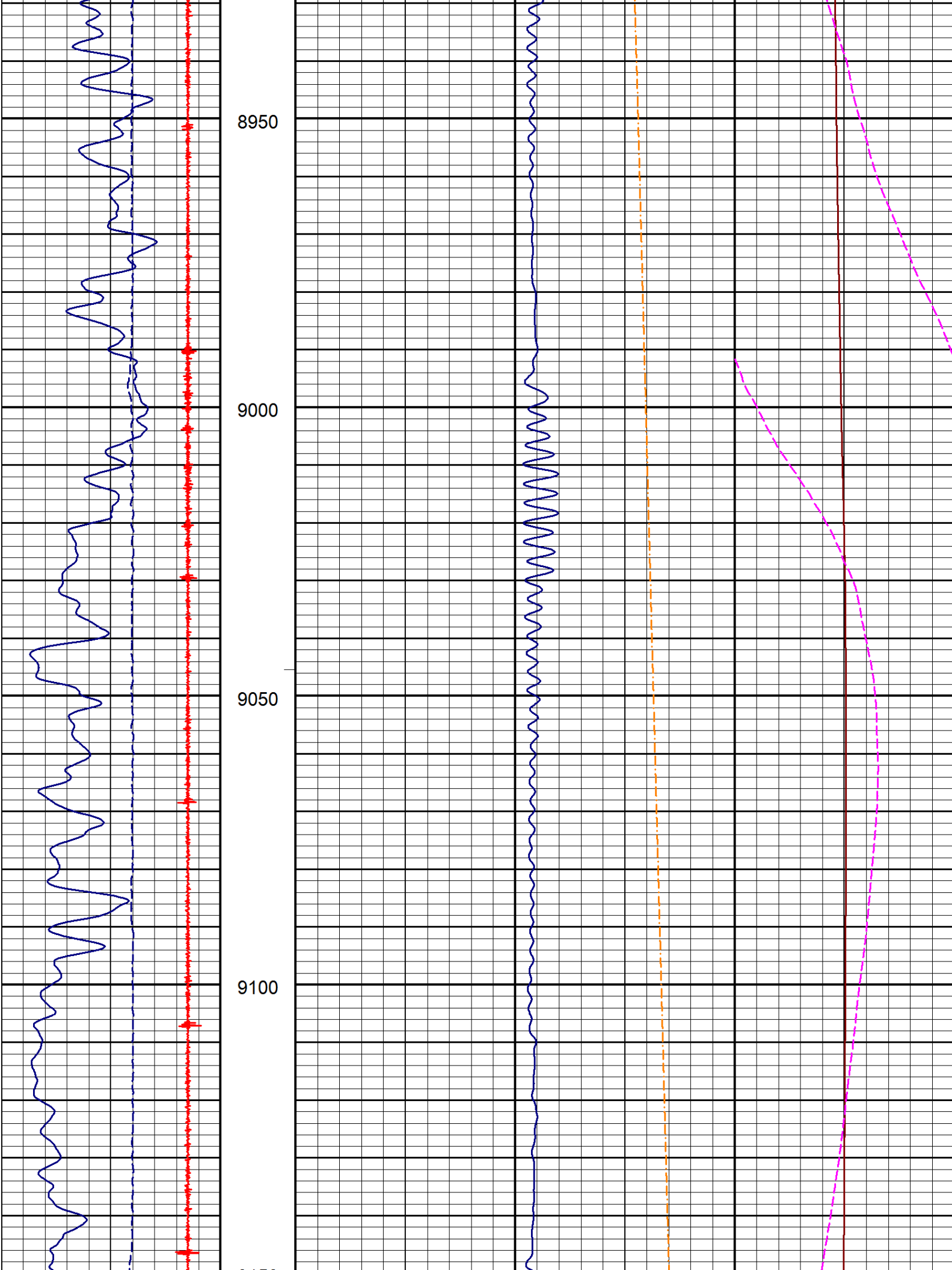
Depth Control Log	Log correlated to Packer listed on pipe talley @ 8540
Remarks:	Slotted liner runs from 8566 to Plug back @ 9834
	Well was under injection at a constant rate of 6000 Bbls/Day
All interpretations are opinions based on inferences from electrical or other measurements and we cannot, and do not guarantee the accuracy or correctness of any interpretations, and we shall not, except in the case of gross or willful negligence on our part, be liable or responsible for any loss, costs, damages or expenses incurred or sustained by anyone resulting from any interpretation made by any of our officers, agents, or employees. These interpretations are also subject to our general terms and conditions as set out in our current price schedule.	

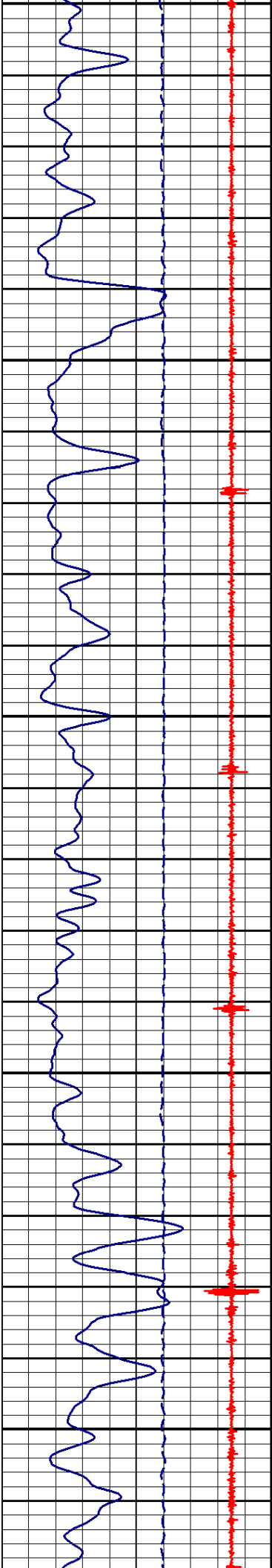
Base 5 Hour Shut In

2016-11-01 14:23	FEET	Spinner Dn 60 (RPS)		Temperature Dn 60 (°F)	
Speed Dn 60 (ft/min)	1:240	-20.00	20.00	0.00	100.00
0.00 100.00					
CCL Dn 60			Pressure Dn 60 (psi)		Temperature Fine Dn 60 (°F)
0.00 100.00			3800.0 4400.0	0.00	4.00
Gamma Ray Dn 60					
0.00 150.00					
Pass No. 10		Logging Down	File Gradient Pass Down 60.pre		
	8490.00	Shutin			



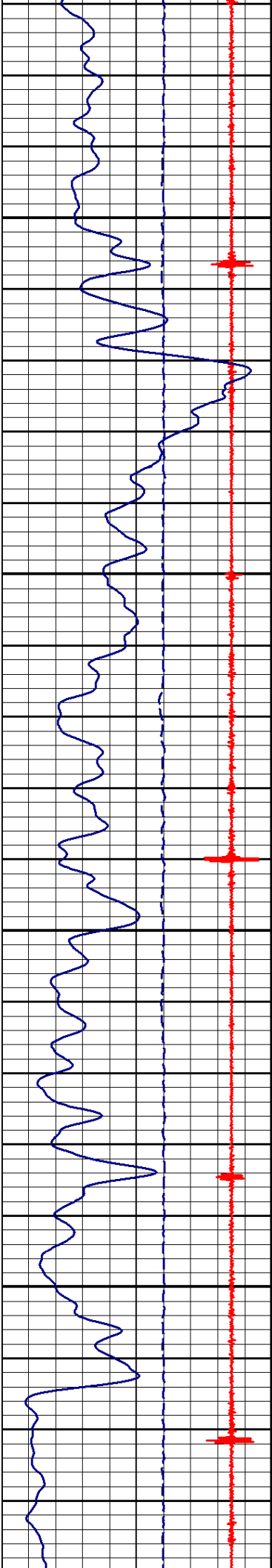






9150
9200
9250
9300
9350





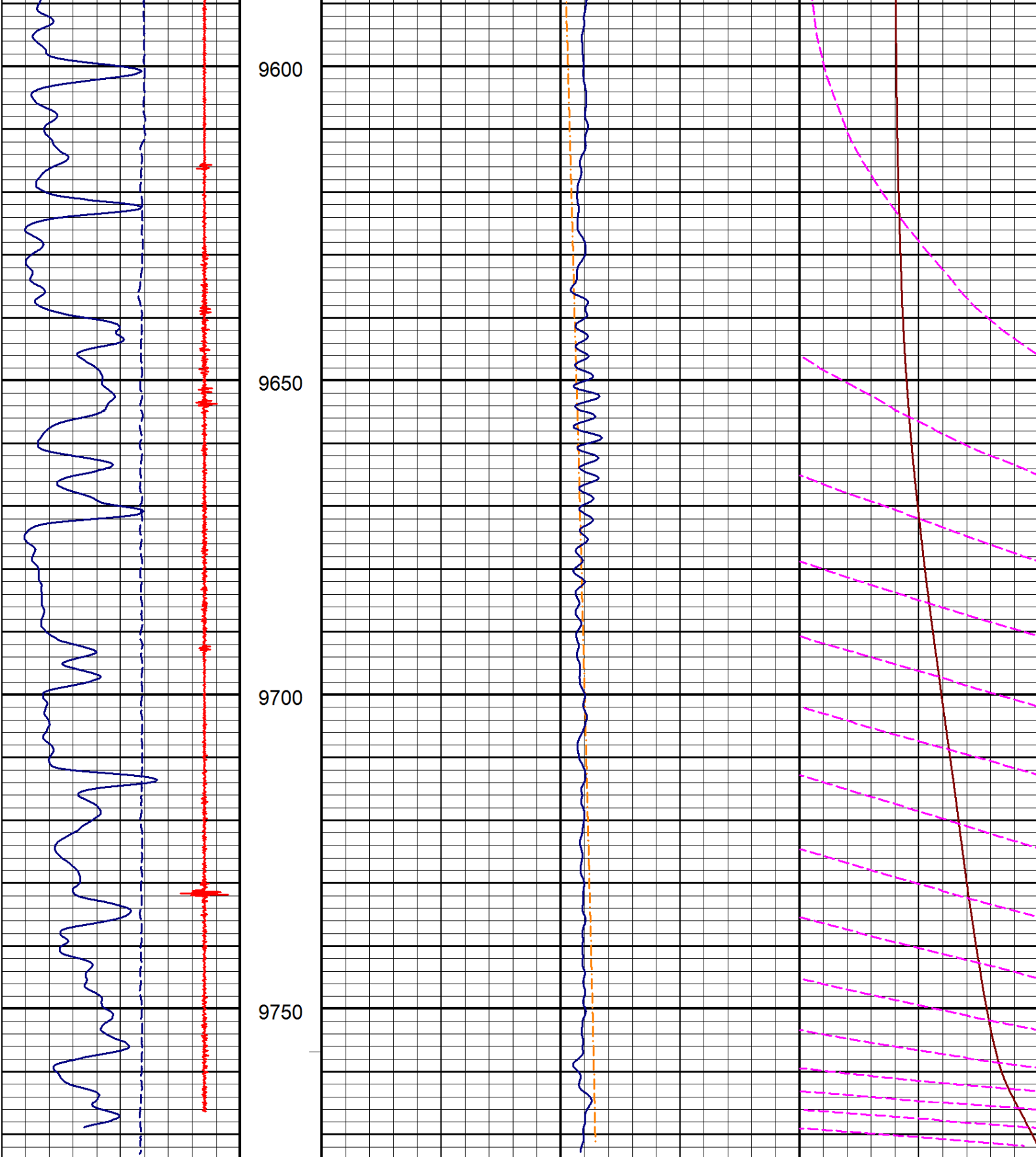
9400

9450

9500

9550

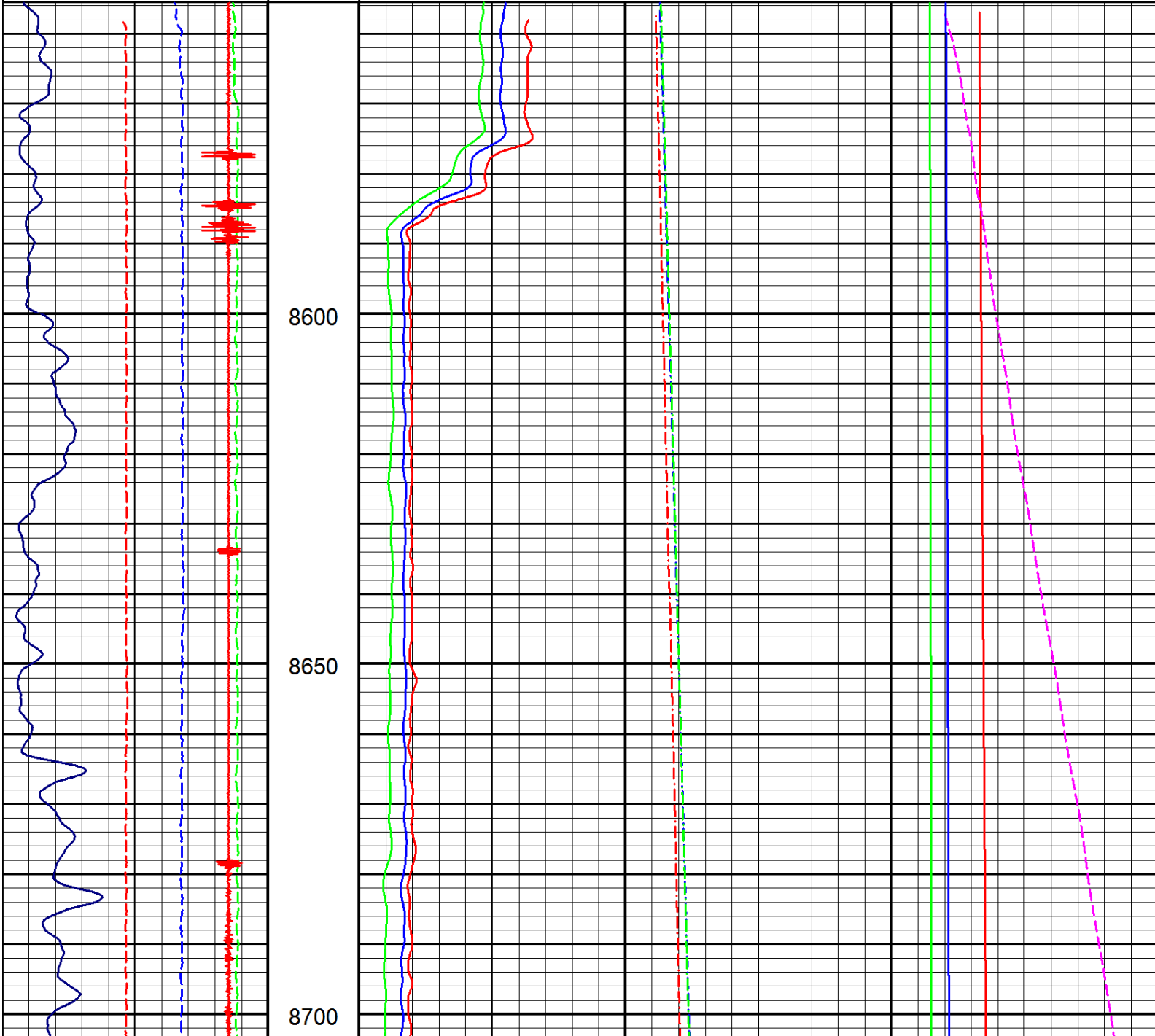


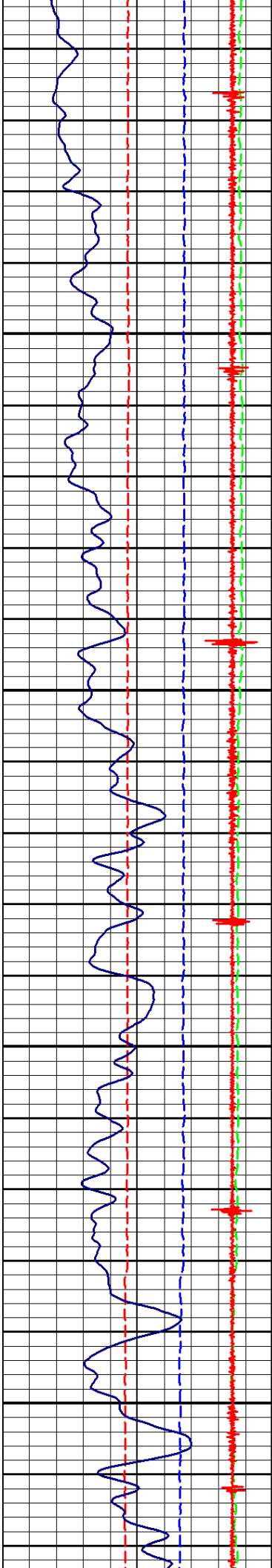


<div>2016-11-01 14:23</div> <div>Speed Dn 60 (ft/min)</div> <div>0.00100.00</div> <div>CCL Dn 60</div> <div>0.00100.00</div> <div>Gamma Ray Dn 60</div> <div>0.00150.00</div> <div>Pass No. 10</div>	<div>9773.90</div> <div>FEET</div> <div>1:240</div>	<div>Spinner Dn 60 (RPS)</div> <div>-20.0020.00</div> <div>Pressure Dn 60 (psi)</div> <div>3800.04400.0</div> <div>Logging Down</div> <div>Shutin</div> <div>File Gradient Pass Down 60.pre</div>	<div>Temperature Dn 60 (°F)</div> <div>0.00100.00</div> <div>Temperature Fine Dn 60 (°F)</div> <div>0.004.00</div> <div>Rev. 2014.06.06</div>
--	---	---	---

Merged Injection Passes

2016-11-01 15:37	FEET 1:240	Spinner Up 60 (RPS)		Temperature Up 60 (°F)		
Speed Up 60 (ft/min)		-20.00	20.00	0.00	100.00	
0.00		150.00				
Speed Up 90 (ft/min)		-20.00	20.00	Temperature Fine Up 60 (°F)		
0.00		150.00	0.00	4.00		
Speed Up 120 (ft/min)		-20.00	20.00	Temperature Up 90 (°F)		
0.00		150.00	0.00	100.00		
CCL				Temperature Up 120 (°F)		
0.00		100.00	5000.0	5600.0	0.00	100.00
Gamma Ray						
0.00		150.00	5000.0	5600.0		
Pass No. 13						
			5000.0	5600.0		
			File Merged.pre			
		Injecting 6000.00B/Day				
	8555.62	Rev. 2014.06.06				



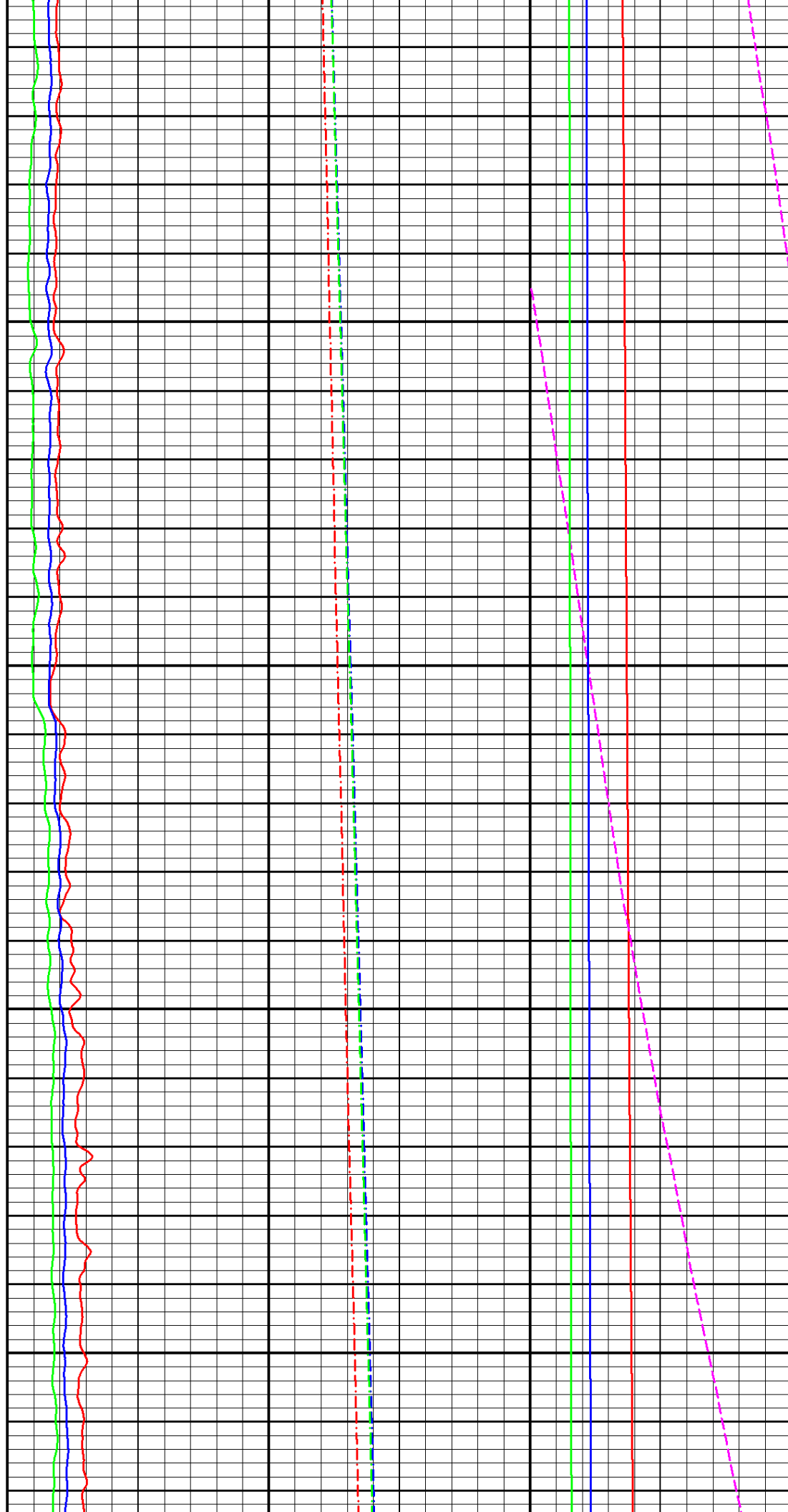


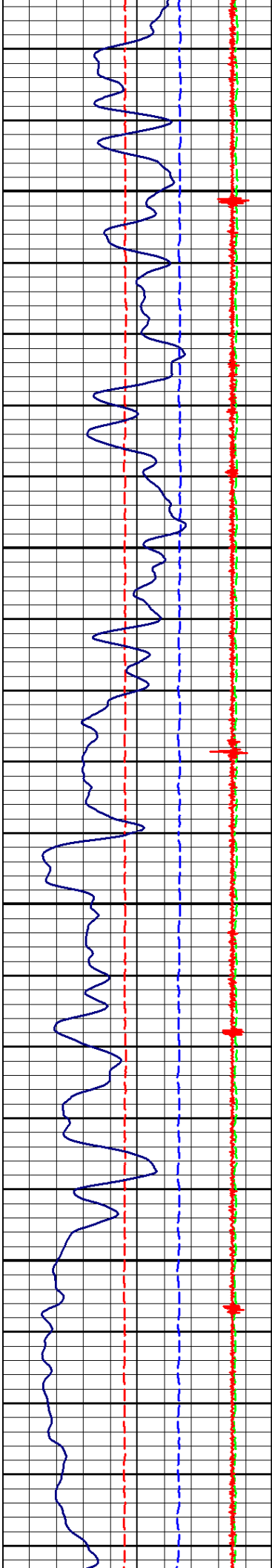
8750

8800

8850

8900



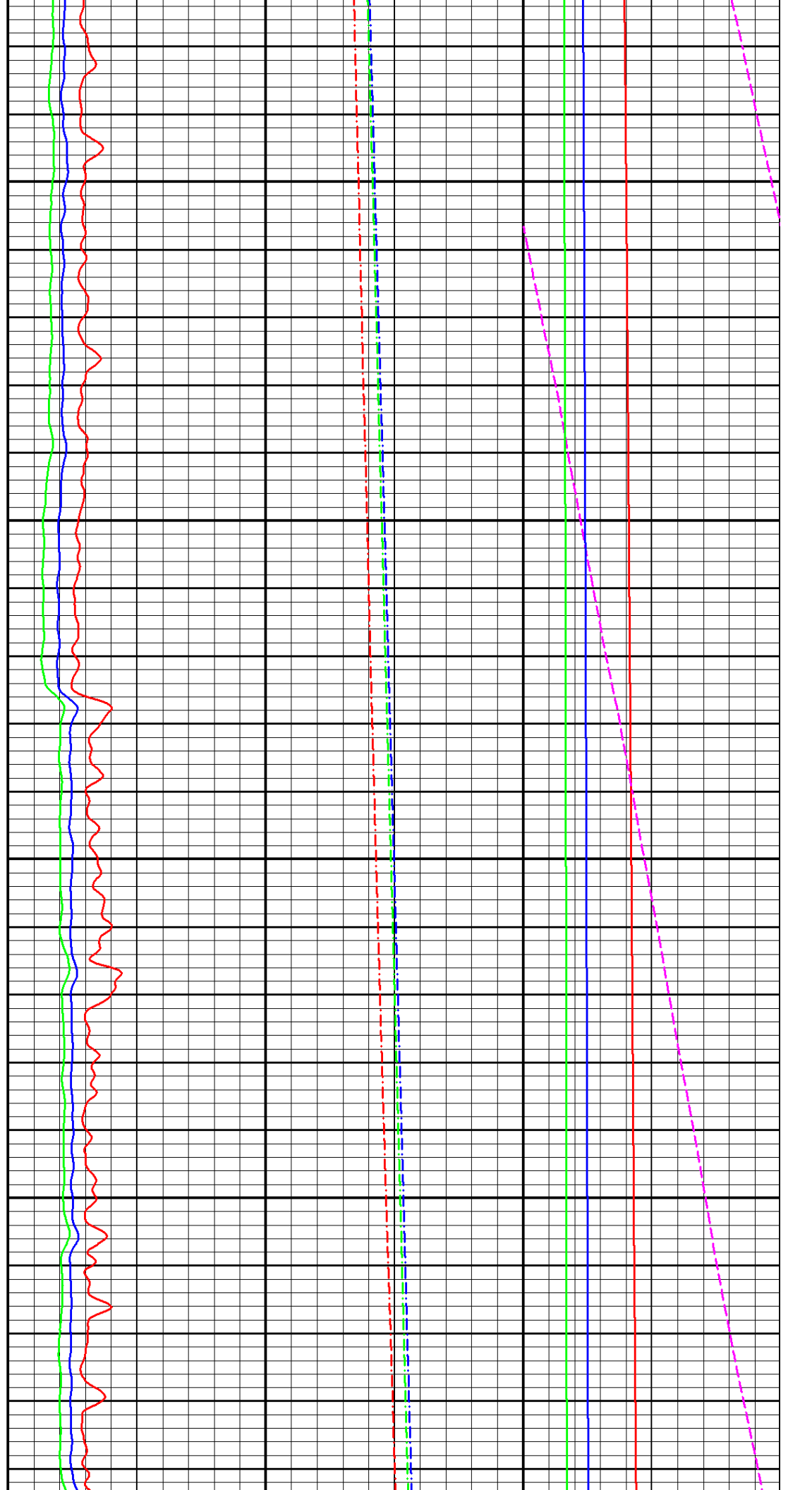


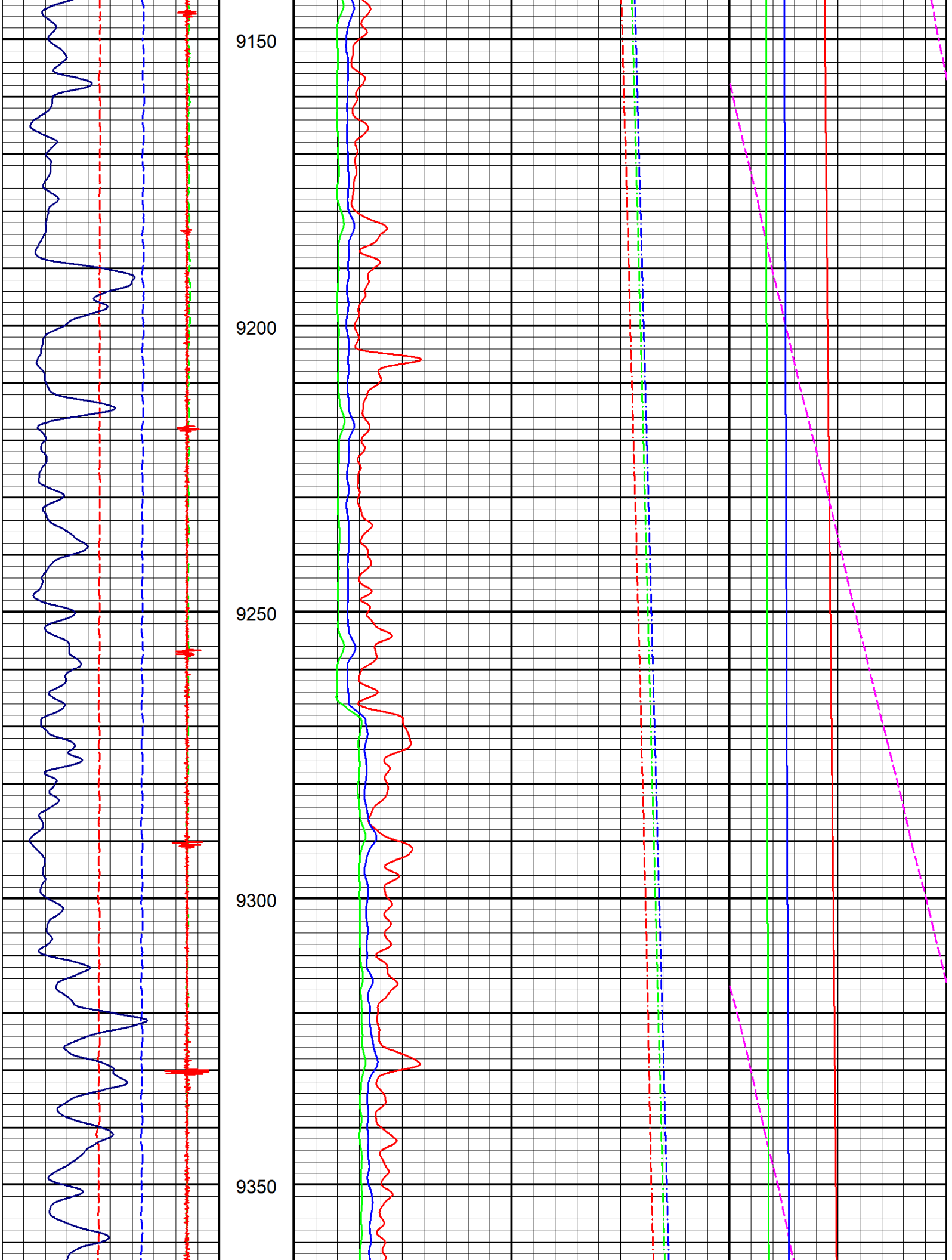
8950

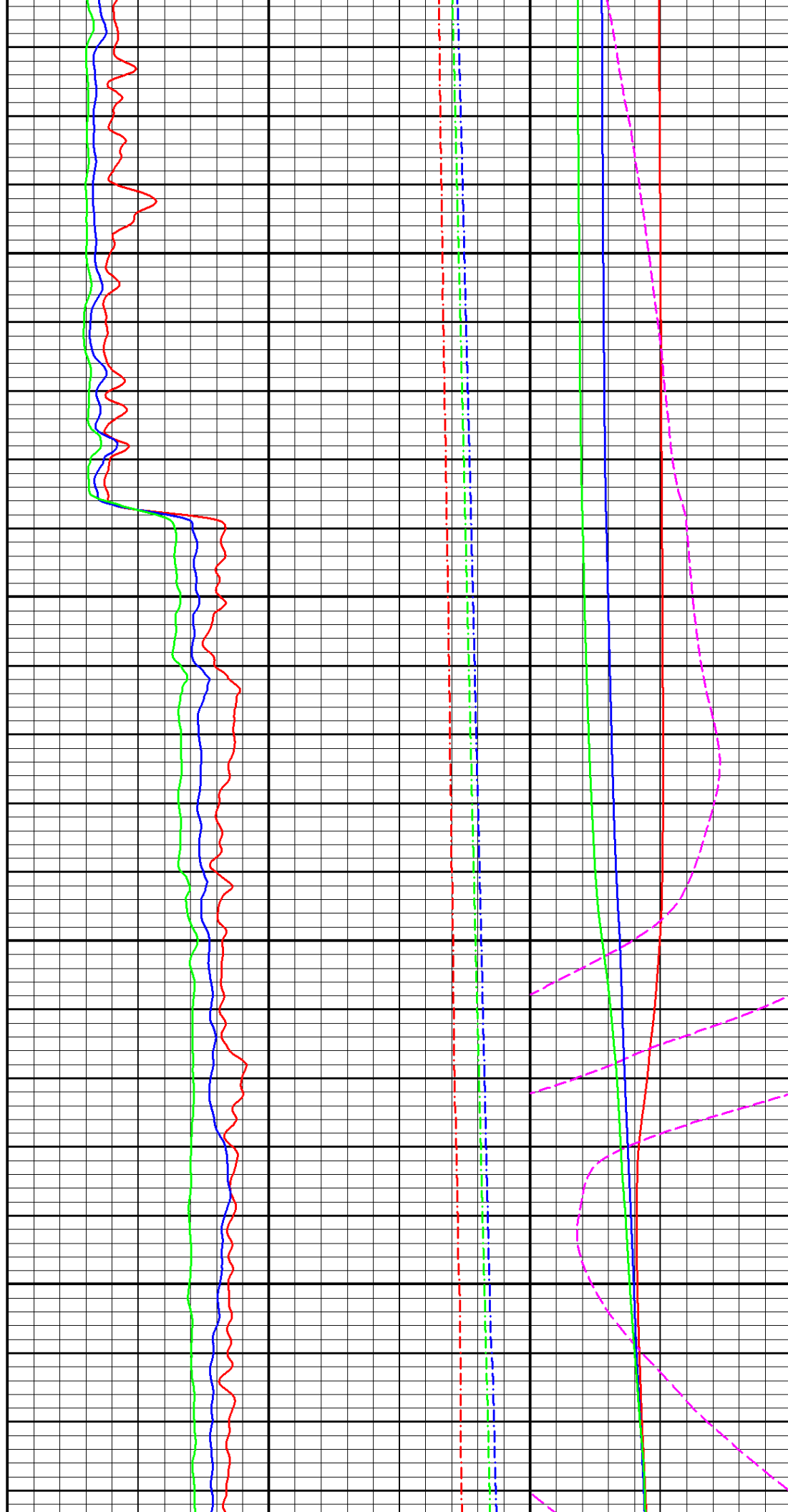
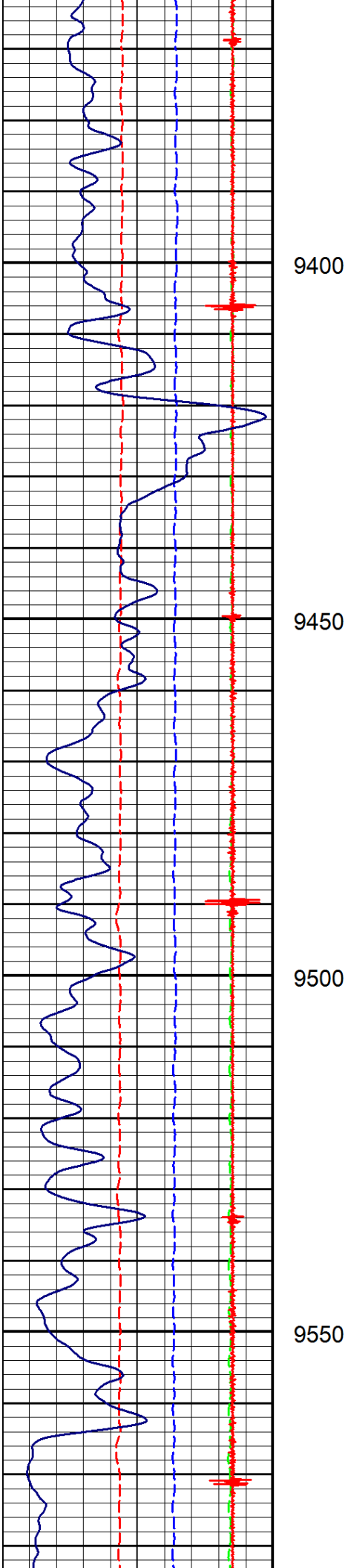
9000

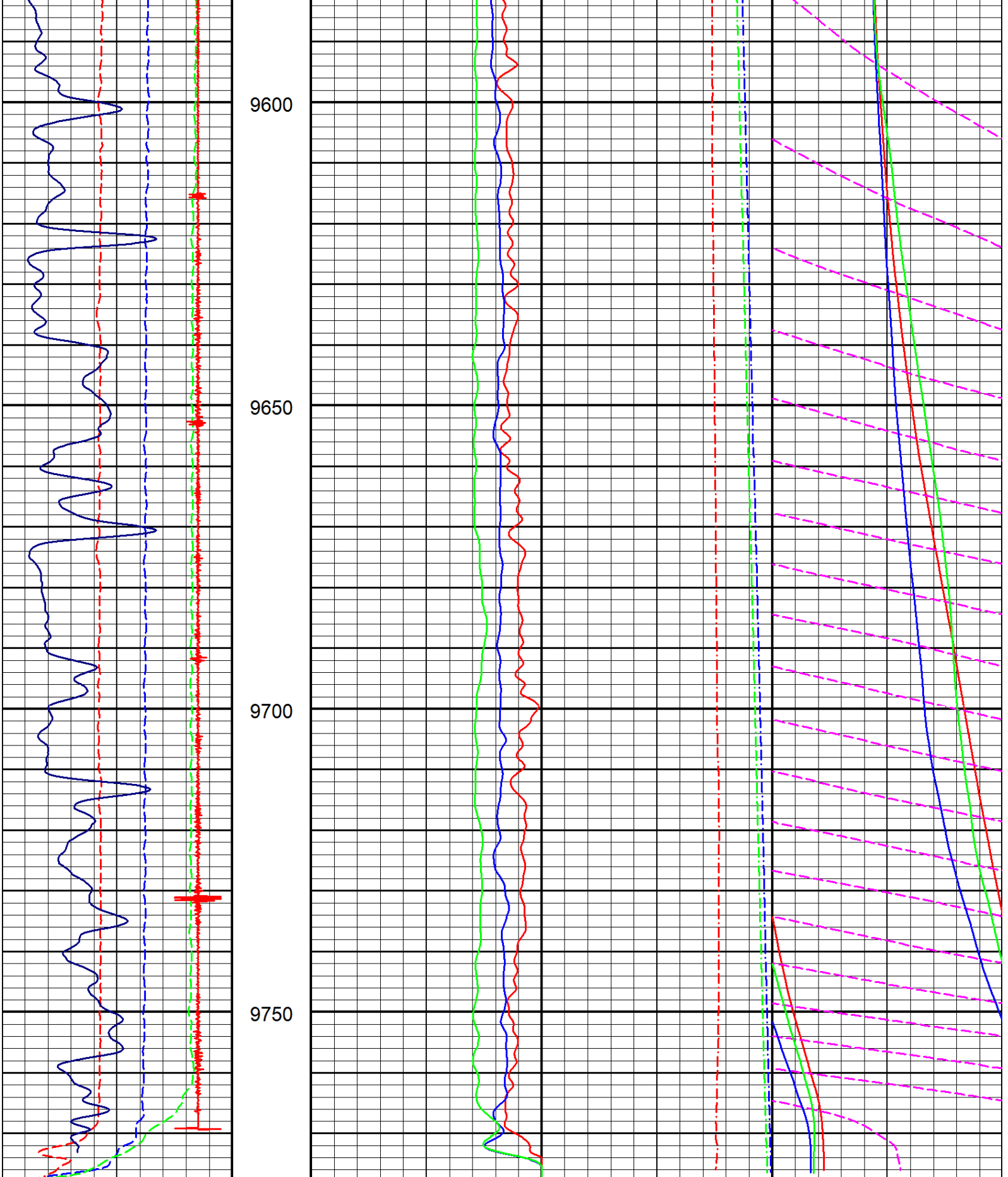
9050

9100





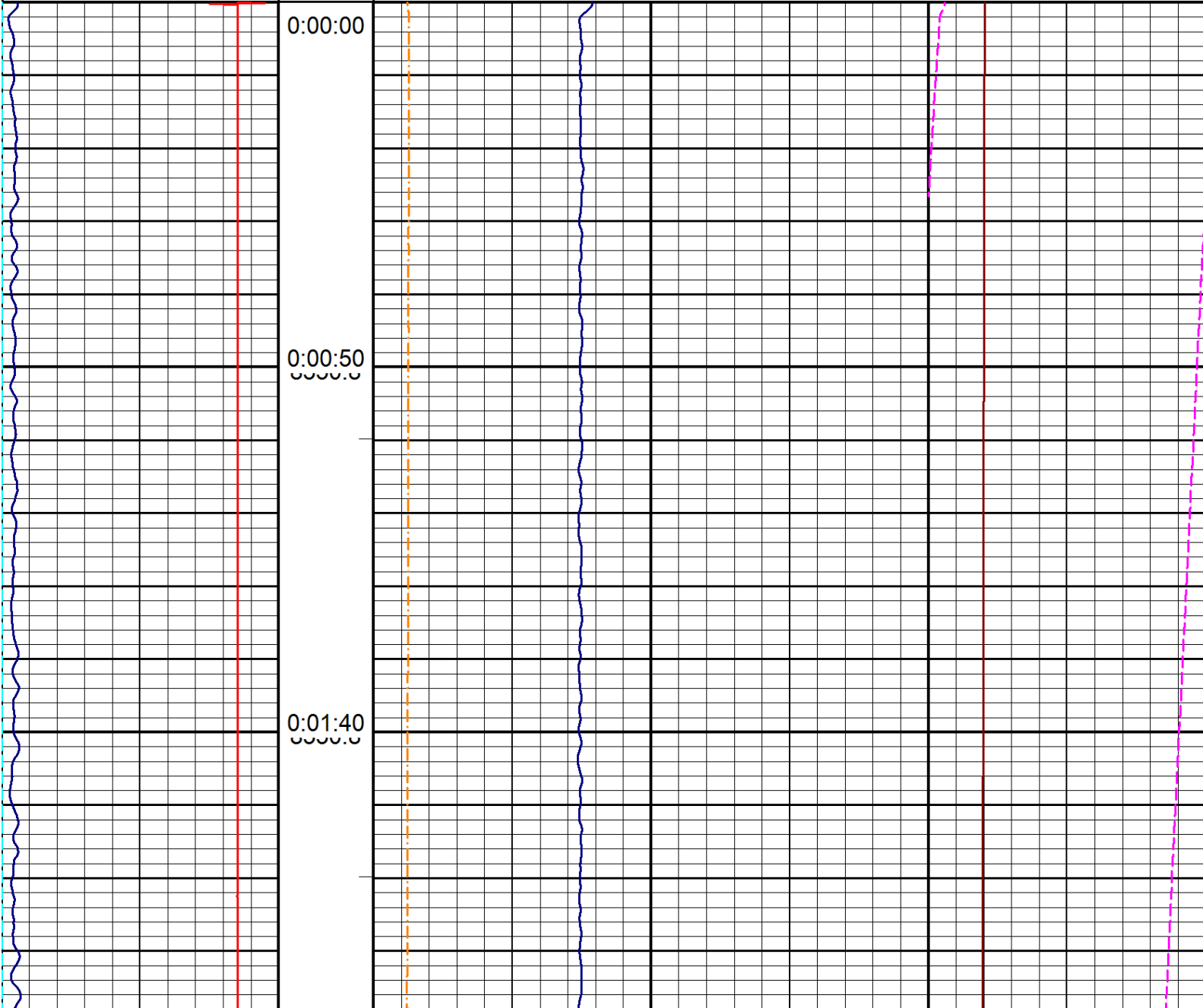




2016-11-01 15:37	Speed Up 60 (ft/min)		Spinner Up 60 (RPS)		Temperature Up 60 (°F)	
	0.00	150.00	-20.00	20.00	0.00	100.00
	Speed Up 90 (ft/min)		Spinner Up 90 (RPS)		Temperature Fine Up 60 (°F)	
	0.00	150.00	-20.00	20.00	0.00	4.00
	Speed Up 120 (ft/min)		Spinner Up 120 (RPS)		Temperature Up 90 (°F)	
0.00	150.00	-20.00	20.00	0.00	100.00	Temperature Up 120 (°F)

CCL		5000.0	5600.0	0.00	100.00
0.00	100.00	Pressure Up 90 (psi)			
Gamma Ray		5000.0	5600.0		
0.00	150.00	Pressure Up 120 (psi)			
Pass No. 13		5000.0	5600.0		
		File Merged.pre			
FEET 1:240		Injecting 6000.00B/Day		Rev. 2014.06.06	

Station Stop 8,550'					
2016-11-01 16:20		Spinner (RPS)		Temperature (°F)	
Speed (ft/min)		-20.00	20.00	100.00	200.00
0.00	100.00	Pressure (psi)		Temperature (°F)	
CCL		5000.0	5600.0	0.00	4.00
0.00	100.00	Time Drive 60.00ft/min File Station @ 8550.pre			
Gamma Ray		Injecting 6000.00B/Day			
0.00	150.00				
Pass No. 16		Rev. 2014.06.06			



2016-11-01 16:20 Speed (ft/min) 0.00 100.00 CCL 0.00 100.00 Gamma Ray 0.00 150.00 Pass No. 16	0:02:23 FEET 1:240	Spinner (RPS) -20.00 20.00 Pressure (psi) 5000.0 5600.0 Time Drive 60.00ft/min Injecting 6000.00B/Day File Station @ 8550.pre	Temperature (°F) 100.00 200.00 Temperature (°F) 0.00 4.00
--	--	---	--

Rev. 2014.06.06

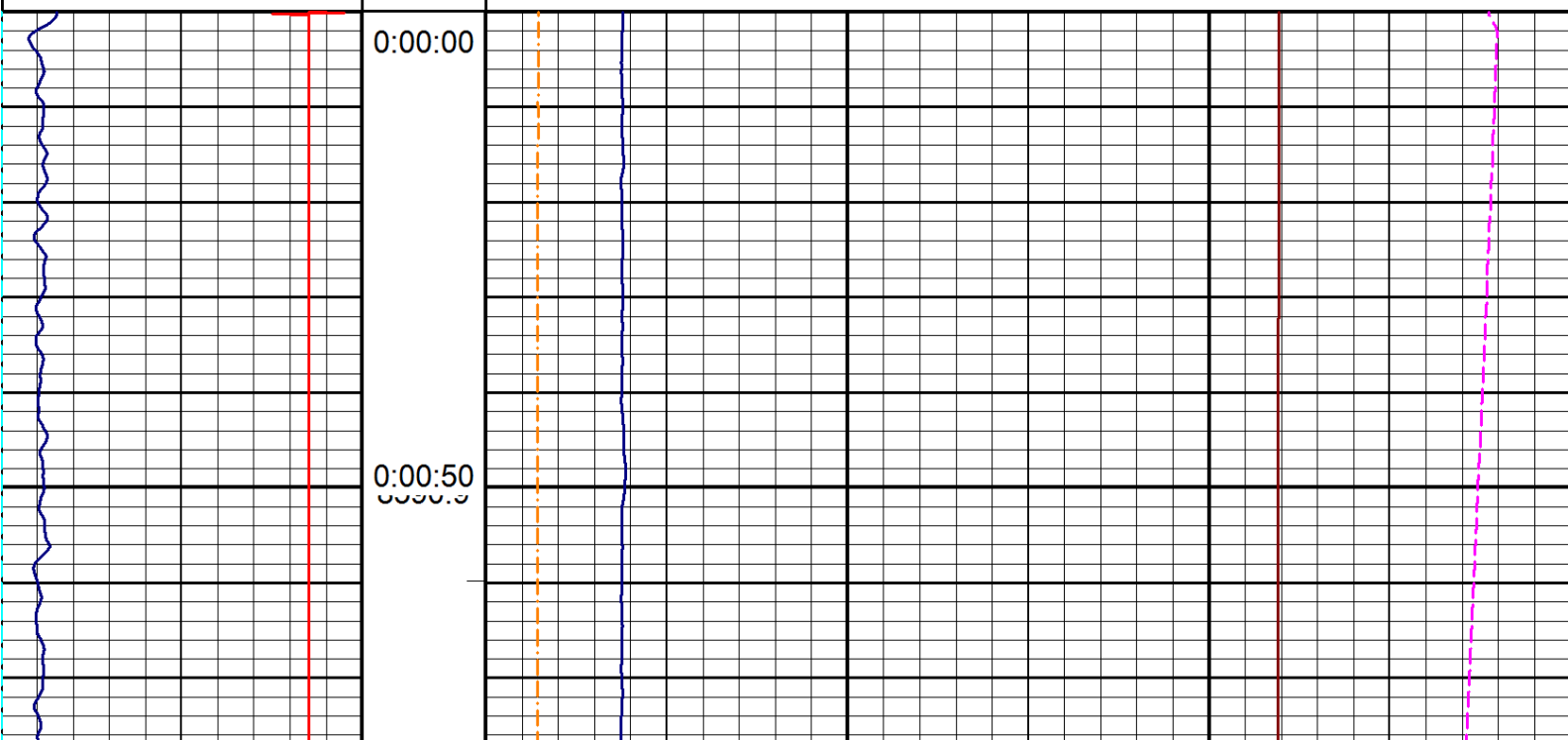
Pass Statistics

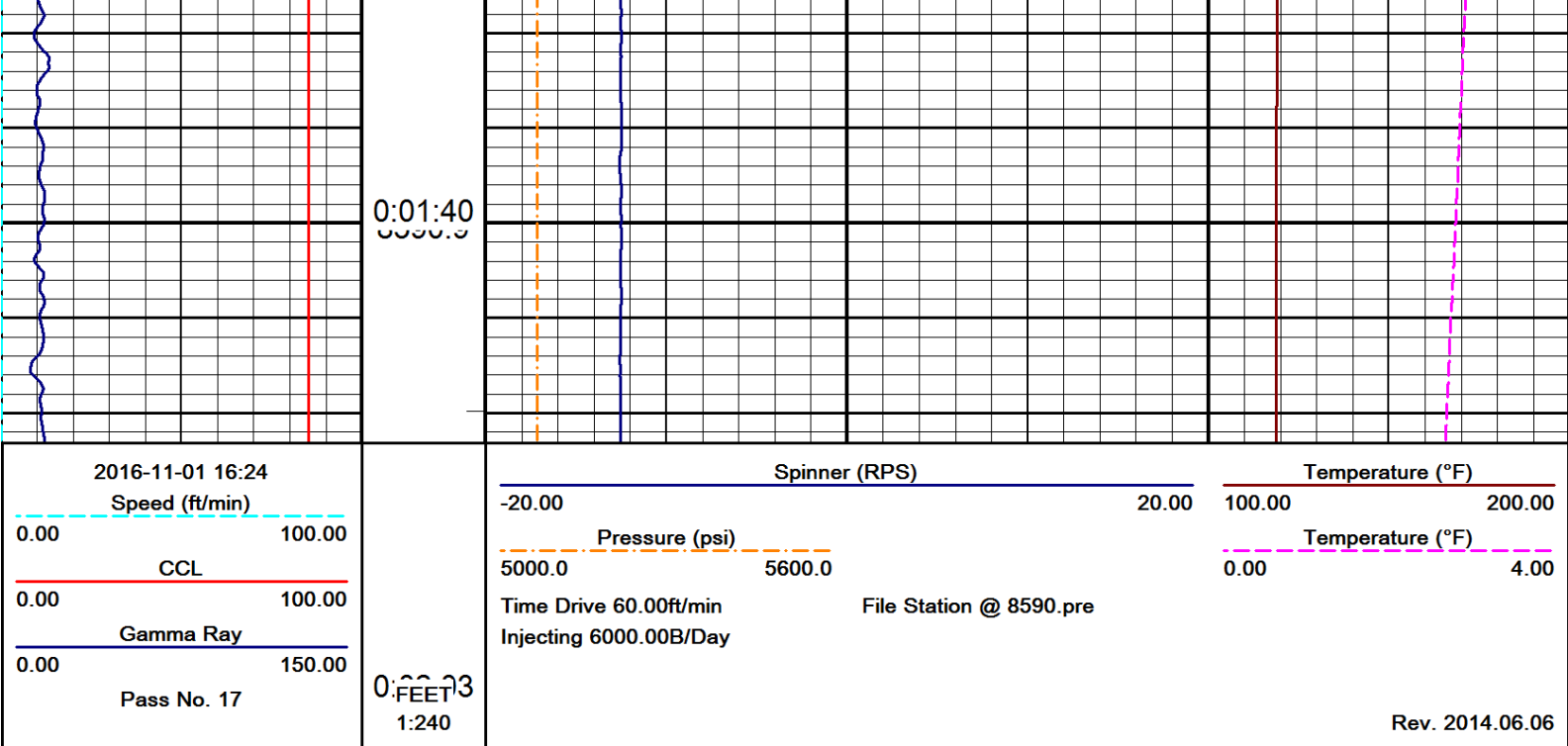
Trace Name	Units	Average Value	Minimum Value	Minimum Depth	Maximum Value	Maximum Depth
Speed	ft/min	0.0	0.0	00:00:00	0.0	00:00:00
CCL		0	-2017	00:00:00	2017	00:00:00
Gamma Ray		3.33035	1.81606	00:00:00	5.1	00:00:41
Temperature	°F	119.8	119.4	00:00:43	120.2	00:00:00
Temperature	°F	119.8	119.4	00:00:43	120.2	00:00:00
Pressure	psi	5073.42	5071.15	00:00:43	5075.55	00:00:00
Spinner	RPS	-5.1	-5.3	00:00:31	-4.3	00:00:00

Station Stop 8,590'

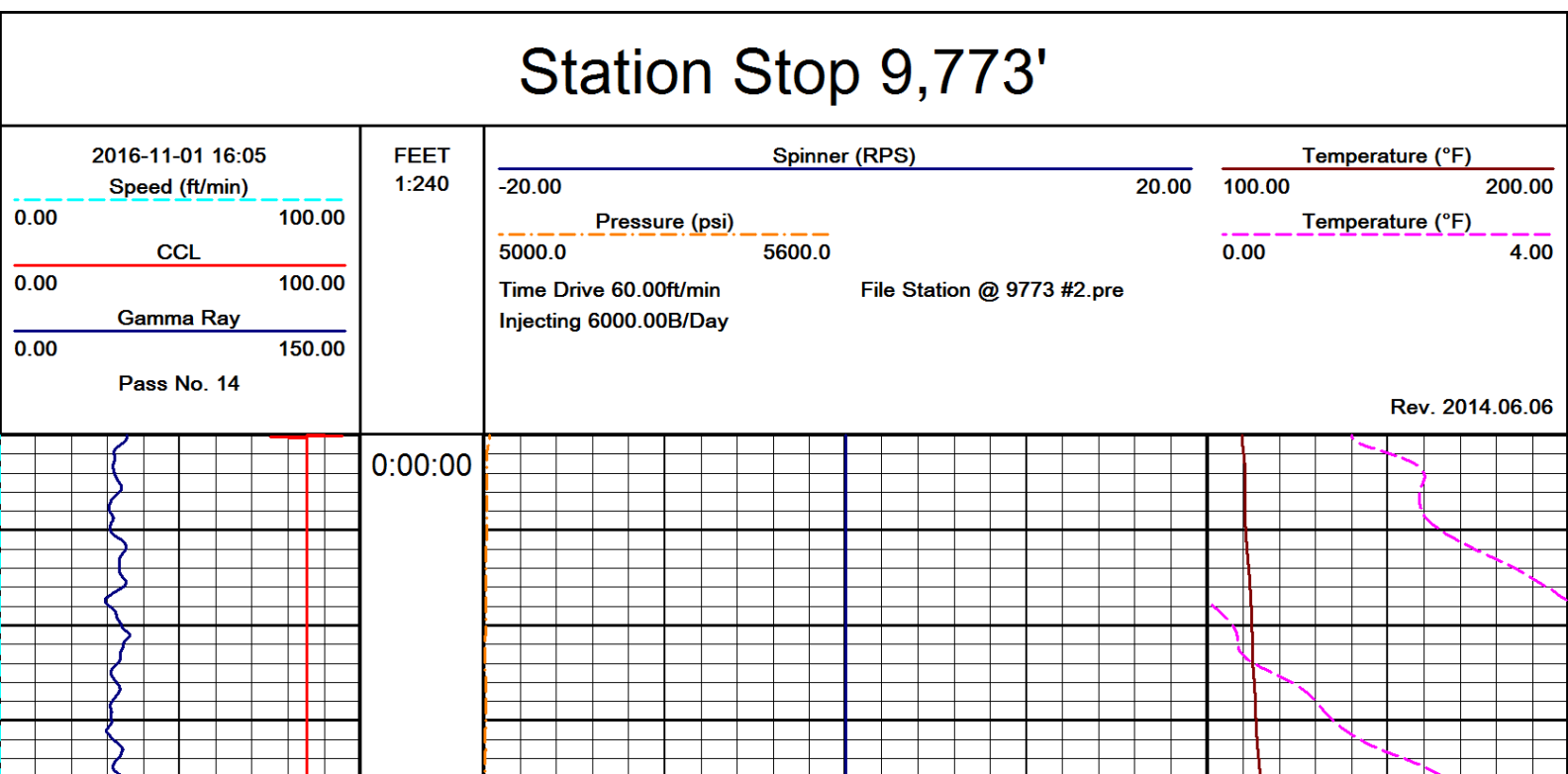
2016-11-01 16:24 Speed (ft/min) 0.00 100.00 CCL 0.00 100.00 Gamma Ray 0.00 150.00 Pass No. 17	FEET 1:240	Spinner (RPS) -20.00 20.00 Pressure (psi) 5000.0 5600.0 Time Drive 60.00ft/min Injecting 6000.00B/Day File Station @ 8590.pre	Temperature (°F) 100.00 200.00 Temperature (°F) 0.00 4.00
--	---------------	---	--

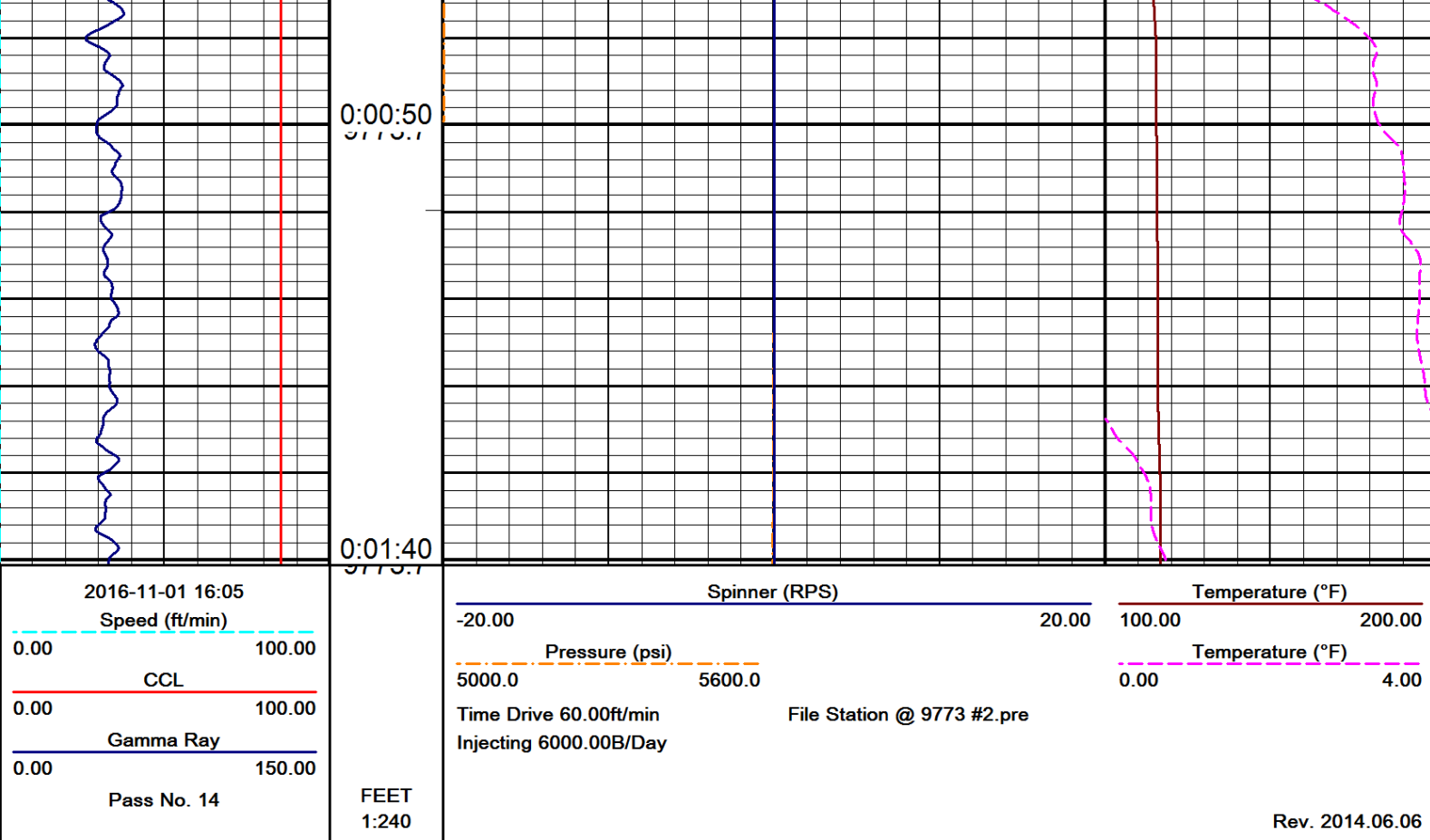
Rev. 2014.06.06





Pass Statistics						
Trace Name	Units	Average Value	Mininum Value	Mininum Depth	Maximum Value	Maximum Depth
Speed	ft/min	0.0	-0.0	00:00:32	0.1	00:00:32
CCL		-0.000812348	-2017	00:00:00	2017	00:00:00
Gamma Ray		8.24787	5.73202	00:00:00	11.5248	00:00:00
Temperature	°F	118.9	118.6	00:00:37	119.2	00:00:00
Temperature	°F	118.9	118.6	00:00:37	119.2	00:00:00
Pressure	psi	5085.17	5084.69	00:00:33	5085.95	00:00:00
Spinner	RPS	-12.5	-12.6	00:00:28	-12.3	00:00:14





Pass Statistics

Trace Name	Units	Average Value	Minimum Value	Minimum Depth	Maximum Value	Maximum Depth
Speed	ft/min	0.0	0.0	00:00:00	0.0	00:00:00
CCL		0	-2017	00:00:00	2017	00:00:00
Gamma Ray		24.6514	19.6163	00:00:12	28.1951	00:00:11
Temperature	°F	214.4	209.6	00:00:00	216.7	00:00:30
Temperature	°F	214.4	209.6	00:00:00	216.7	00:00:30
Pressure	psi	5600.40	5596.49	00:00:29	5608.12	00:00:00
Spinner	RPS	0.0	0.0	00:00:00	0.0	00:00:00

Tool String Configuration

Max. Length: 17.37 ft

Cable Head

Length: 1.31 ft Max Diameter: 1.22 in

Generic

Length: 7.00 ft Max Diameter: 1.75 in
Weight: 65.00 lb



— -17.37 ft Top of String

Lee Specialties Telemetry

Length: 4.95 ft Max Diameter: 1.37 in

—— -8.23 ft - CCL

Lee Specialties PTF

Length: 2.43 ft Max Diameter: 1.37 in

—— -5.12 ft - Gamma Ray

Lee Specialties Full Bore Spinner

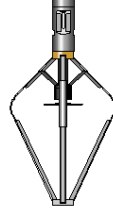
Length: 1.67 ft Max Diameter: 1.38 in

—— -2.20 ft - Pressure

—— -1.94 ft - Temperature

—— -1.08 ft - Flow

—— 0.00 ft Bottom of String



COMPANY Expedition Water Solutions

WELL EWS #2

FIELD Clay Basket

STATE Colorado **COUNTRY** USA

LSD. **SEC.** 26 **TWP.** 8N **RGE.** 60W **W.**