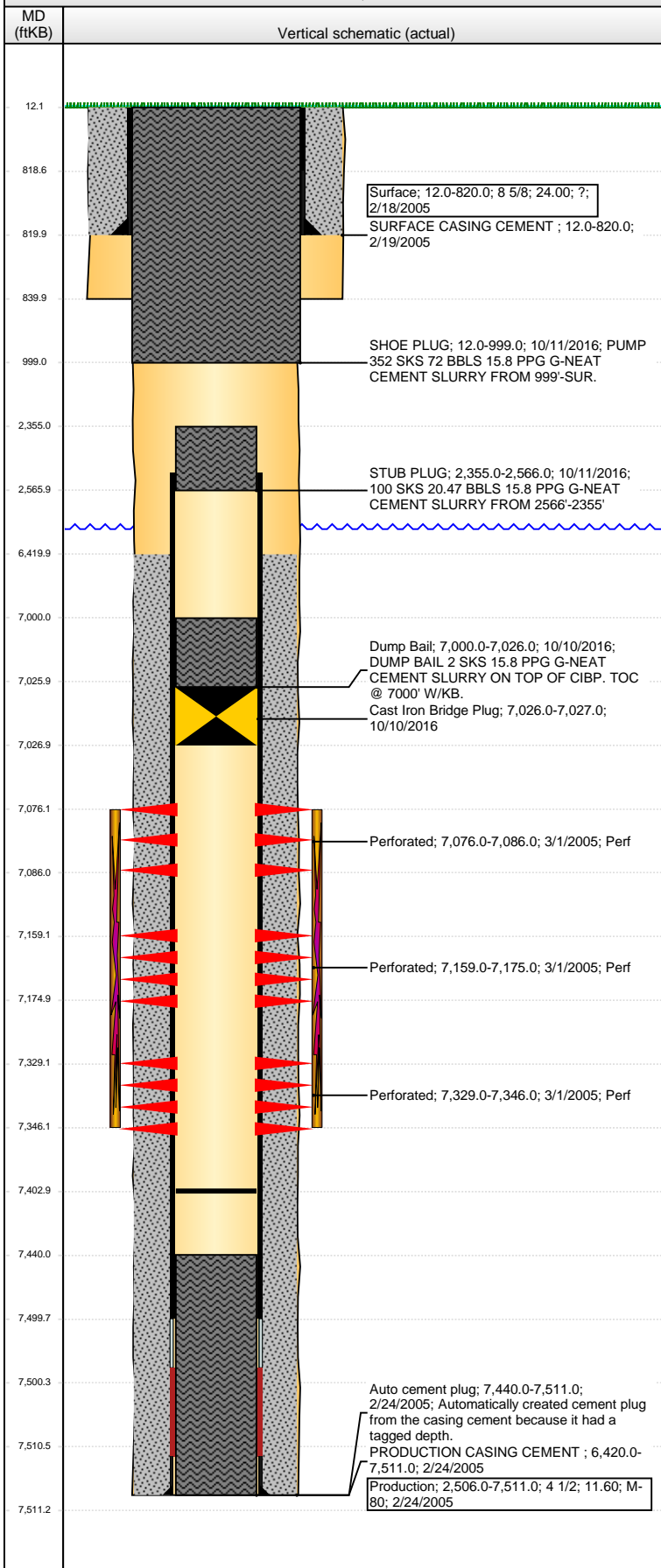


**Well Name: CECIL FARMS 06-11**

VERTICAL - ORIGINAL HOLE, 11/9/2016 3:19:39 PM



Well Header								
API 05-123-22686		Business Unit DJ BASIN		District 15		Well Config VERTICAL		
Original KB Elevation (ft) 4,885		KB - GL / MSL (ftKB) 12.00		Spud Date 2/18/2005		P & A Date 10/11/2016		
Comment								
Directions To Well RD 27 & 72, N 7/10, N NW 2/10 INTO.								
Congressional Location								
Quarter 3 NE		Quarter 4 NE	Section 6	Township 6	Twnshp N/S Dir N	Range 66		Range E/W Dir W
Bottom Hole Location								
North-South Distance (ft)			From N or S Line		East-West Distance (ft)		From E or W Line	
Plug Back Total Depths								
Date		Depth (ftKB)	Method		Com			
2/24/2005		7,499.8	TAG		SHOE WITH BAFFLE			
2/28/2005		7,440.0	CASED HOLE LOG		DEPTH LOGGER FROM CBL			
3/4/2014		7,403.0	TAG					
Wellbore Sections								
Section Des			Size (in)	Act Top, MD (ftKB)		Act Btm, MD (ftKB)		
SURFACE			12 1/4	12		840		
PRODUCTION			7 7/8	840		7,511		
Zone Statuses								
Zone Name		Status Date	Status	Fluid Type	Job	Prod Method		
CODELL		3/9/2005	PR	Water	DRILLING/CO...	Flowing		
CODELL		5/13/2010	PR					
CODELL		10/10/2016	P&A		ABANDON WE...			
NIOBRARA		3/9/2005	PR	Water	DRILLING/CO...	Flowing		
NIOBRARA		5/13/2010	PR					
NIOBRARA		10/10/2016	P&A		ABANDON WE...			
Casing Strings								
Surface, 820.0ftKB								
Casing Description		Run Date	OD (in)	Wt/Len (l...	Grade	Top, MD (ft...	MD (ftKB)	
Surface		2/18/2005	8 5/8	24.00	?	12.0	820.0	
Production, 7,511.0ftKB								
Casing Description		Run Date	OD (in)	Wt/Len (l...	Grade	Top, MD (ft...	MD (ftKB)	
Production		2/24/2005	4 1/2	11.60	M-80	12.0	7,511.0	
Cement								
Description				Top Depth (ftKB)		Bottom Depth (ftKB)		
SURFACE CASING CEMENT				12.0		820.0		
Description				Top Depth (ftKB)		Bottom Depth (ftKB)		
PRODUCTION CASING CEMENT				6,420.0		7,511.0		
Description				Top Depth (ftKB)		Bottom Depth (ftKB)		
Dump Bail				7,000.0		7,026.0		
Description				Top Depth (ftKB)		Bottom Depth (ftKB)		
STUB PLUG				2,355.0		2,566.0		
Description				Top Depth (ftKB)		Bottom Depth (ftKB)		
SHOE PLUG				12.0		999.0		
Tubing Strings								
Tubing Description		Run Date	String...	ID (in)	Wt (lb/ft)	Grade	Len (ft)	Set De...
Tubing		5/20/2005	2 3/8	1.867	4.70	?	7,316.00	
Tubing Description		Run Date	String...	ID (in)	Wt (lb/ft)	Grade	Len (ft)	Set De...
Tubing - Production		3/6/2014	2 3/8	1.995	4.70	J-55	6,275.69	
Tubing Description		Run Date	String...	ID (in)	Wt (lb/ft)	Grade	Len (ft)	Set De...
Tubing - Production		6/17/2014	2 3/8	1.995	4.70	J-55	7,302.73	
Perforation Data								
Zone		Bnch/St g	Entered Shot Total	Top (ftKB)	Btm (ftKB)	Date		
NIOBRARA, ORIGINAL HOLE		A		7,076.00	7,086.00	3/1/2005		
NIOBRARA, ORIGINAL HOLE		B		7,159.00	7,175.00	3/1/2005		
CODELL, ORIGINAL HOLE				7,329.00	7,346.00	3/1/2005		

**Well Name: CECIL FARMS 06-11**

VERTICAL - ORIGINAL HOLE, 11/9/2016 3:19:42 PM

## Stimulations & Treatments

Date 3/2/2005	Zone NIOBRARA-CODELL, ORIGINAL HOLE	Primary Job Type
Technical Result	Tech Result Details	Tech Result Note

Comment  
**LIMITED ENTRY**

## Other In Hole

Run Date	Des	OD (in)	Top (ftKB)	Btm (ftKB)
10/10/2016	Cast Iron Bridge Plug	3.99	7,026.0	7,027.0

## Logs

Date	Type	Top, MD (ftKB)	Btm, MD (ftKB)
2/24/2005	COMPENSATED DENSITY	3,700.0	7,491.0
2/24/2005	INDUCTION	832.0	7,511.0
2/28/2005	CBL/CCL/GR	6,300.0	7,438.0
12/30/2013	GYRO	13.0	7,275.0

