

LEGEND:

 PROPOSED LOCATION



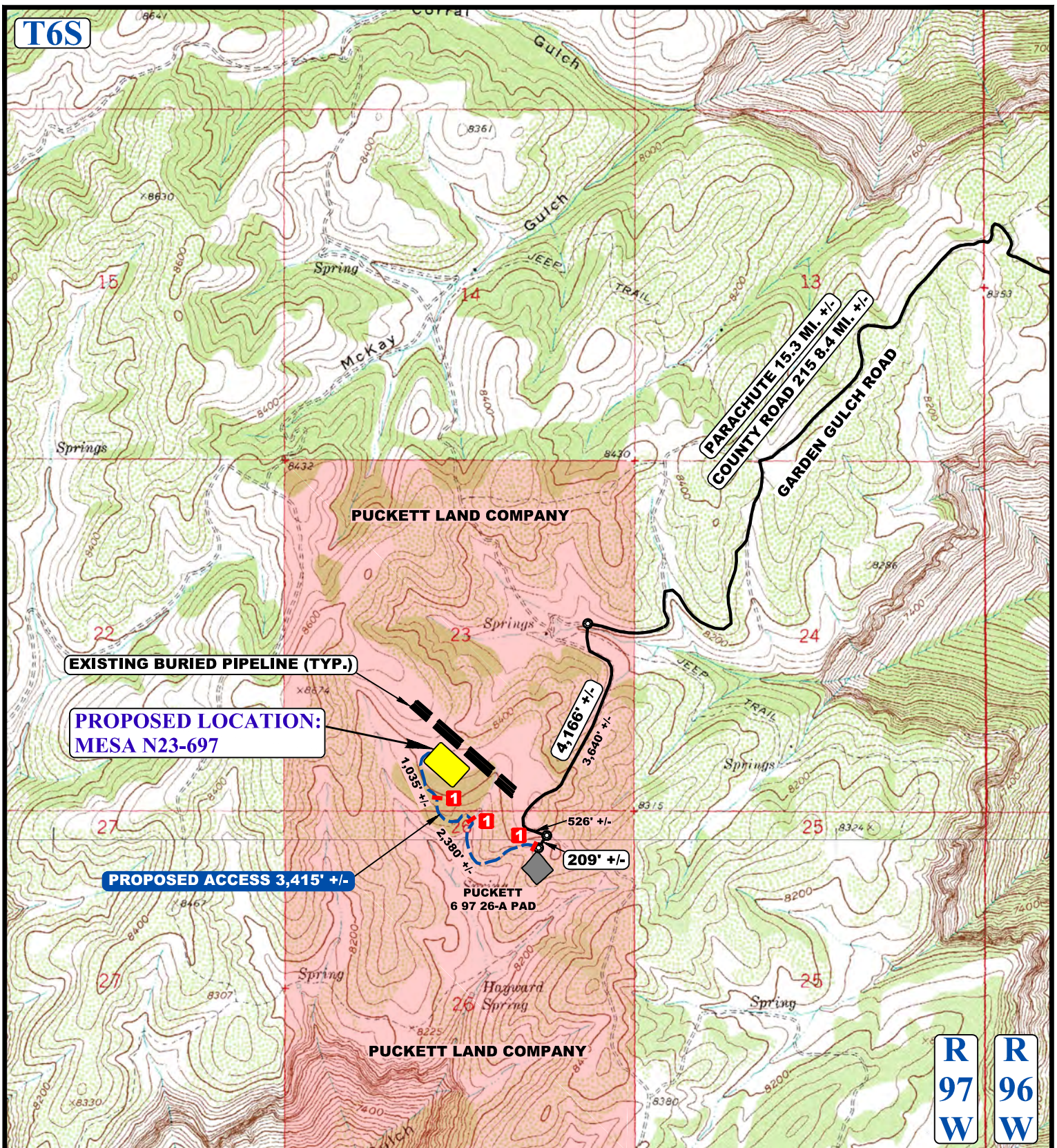
UELS, LLC
Corporate Office * 85 South 200 East
Vernal, UT 84078 * (435) 789-1017



Caerus Oil & Gas LLC

MESA N23-697
SE 1/4 SW 1/4, SECTION 23, T6S, R97W, 6th P.M.
GARFIELD COUNTY, COLORADO

SURVEYED BY	B.H., C.R.	09-06-16	SCALE
DRAWN BY	C.D.L.	09-07-16	1 : 100,000
ACCESS ROAD MAP			TOPO A



NOTE: PARCEL DATA SHOWN HAS BEEN OBTAINED FROM VARIOUS SOURCES AND SHOULD BE USED FOR MAPPING, GRAPHIC AND PLANNING PURPOSES ONLY. NO WARRANTY IS MADE BY UINTAH ENGINEERING AND LAND SURVEYING (UELS) FOR ACCURACY OF THE PARCEL DATA.

LEGEND:

- EXISTING ROAD
- PROPOSED ROAD
- EXISTING PIPELINE
- INSTALL 18" CULVERT



UELS, LLC
Corporate Office * 85 South 200 East
Vernal, UT 84078 * (435) 789-1017



Caerus Oil & Gas LLC

MESA N23-697
SE 1/4 SW 1/4, SECTION 23, T6S, R97W, 6th P.M.
GARFIELD COUNTY, COLORADO

SURVEYED BY	B.H., C.R.	09-06-16	SCALE
DRAWN BY	C.D.L.	09-07-16	1 : 24,000
ACCESS ROAD MAP			TOPO B