

**NOBLE ENERGY INC.**  
 Nelson 17-12  
 NWNE 12-4N-65W  
 1150 FNL & 1430 FEL  
 WELD COUNTY, CO  
 Wattenberg  
**CURRENT WELLBORE SCHEMATIC**  
 with PROPOSED P&A  
 11/2/2016

API: 05-123-22225  
 COGCC #

GL Elev: 4779'  
 KB Elev: 4795'

Spud Date: 6/20/2004

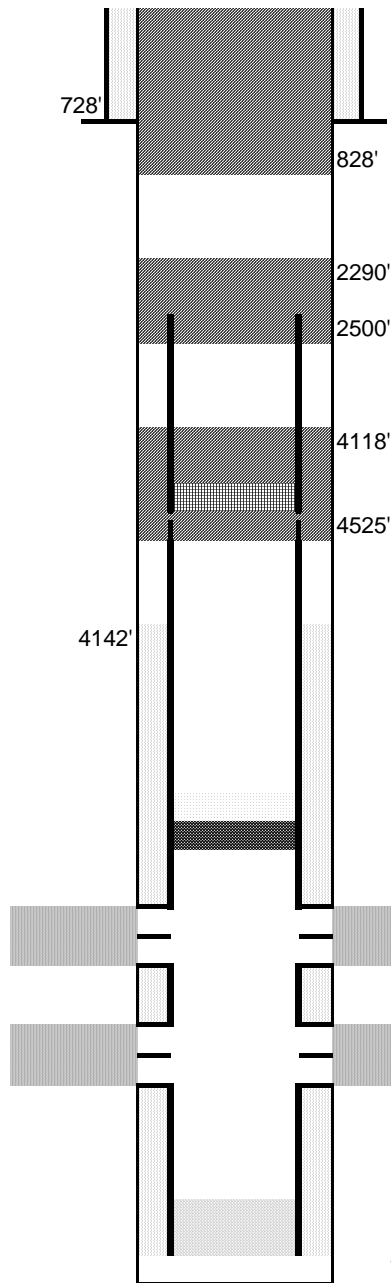
**Surface Casing :**  
 8-5/8" 24# J-55 @ 728' KB  
 Cement: 340 sx  
 TOC: Surface

Sussex Log Top: 4330'

TOC @ 4142'

Nio Log Top: 6838'

**Production Casing :**  
 4-1/2" 11.6# I-80 @ 7227' KB  
 Cement: 460 sx  
 TD: 6/24/2004



Cut surface casing off 6'-8' below surface.

Pump approx 275 sx shoe plug @ 828'  
 Will bring cement to surface.

Pump 100 sx stub plug where csg was pulled  
 Cut and pull csg @ 2500'

Pump 125 sx through and 25 sx on top  
 Set CICR @ 4425'  
 Perforate 4 1/2" casing @ 4525'

CIBP @ 6818' w/ 2 sx cement on top

Niobrara Perforations: 6868-6954' KB

Codell Perforations: 7075-7090' KB

TD: 7238' KB