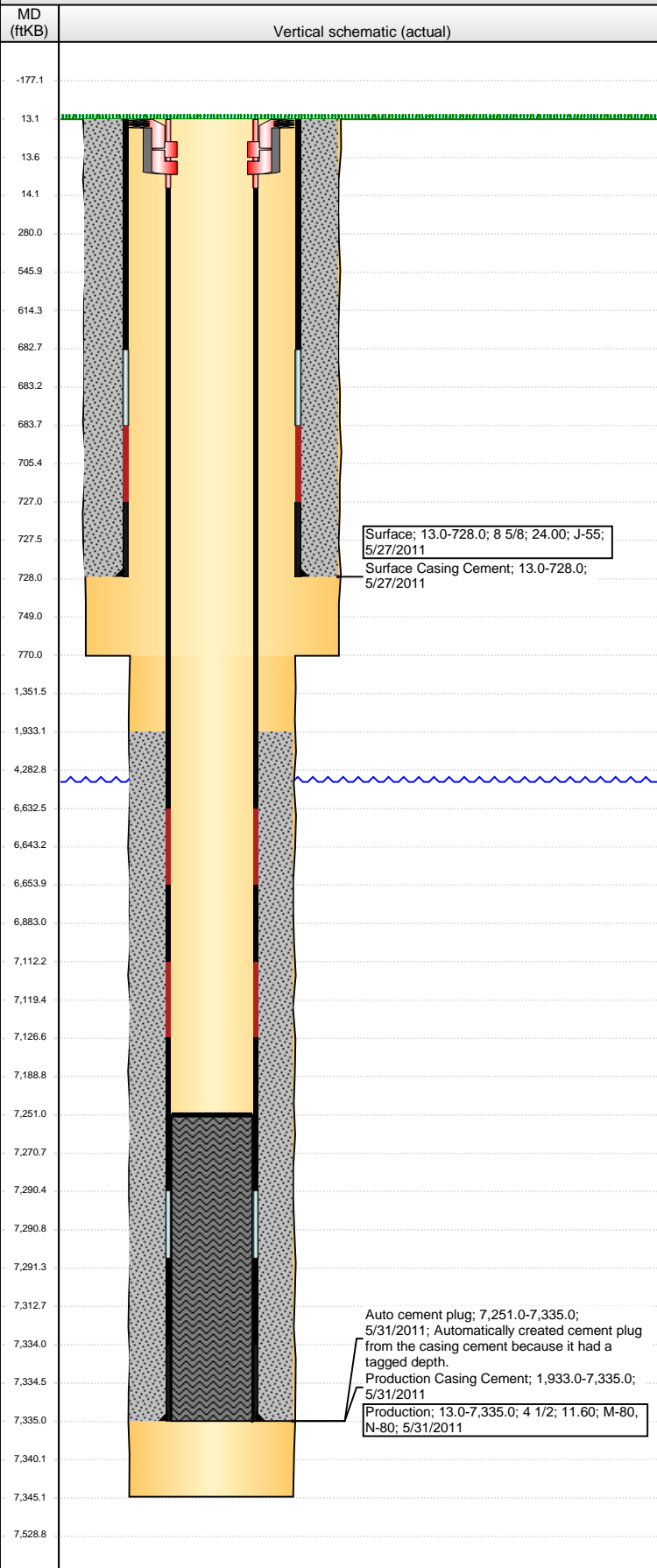


Well Name: KUMMER PC LE23-17

VERTICAL - ORIGINAL HOLE, 11/2/2016 11:17:03 AM



Well Header

API	Business Unit	District	Well Config
05-123-33302	DJ BASIN	25	VERTICAL
Original KB Elevation (ft)	KB - GL / MSL (ftKB)	Spud Date	P & A Date
5,005	13.00	5/27/2011	

Comment

WAS A TIGHT PILOT HOLE WELL - DRILLED BUT NEVER COMPLETED - TEMPORARILY ABANDONED UNTIL DECISION IS MADE WHETHER TO ABANDON PERMANENTLY OR DO SUBSEQUENT WORK

Directions To Well

HWY 14 & CR 95, GO NORTH 1 MILE, WEST 3/10THS, THEN SOUTH 4/10THS TO LOCATION

Congressional Location

Quarter 3	Quarter 4	Section	Township	Twtnshp N/S Dir	Range	Range E/W Dir
SE	NE	23	8	N	61	W

Bottom Hole Location

North-South Distance (ft)	From N or S Line	East-West Distance (ft)	From E or W Line
---------------------------	------------------	-------------------------	------------------

Plug Back Total Depths

Date	Depth (ftKB)	Method	Com
5/31/2011	7,290.0	CASING TALLY	FLOAT COLLAR
6/9/2011	7,251.0	CASED HOLE LOG	DEPTH LOGGER - CBL

Wellbore Sections

Section Des	Size (in)	Act Top, MD (ftKB)	Act Btm, MD (ftKB)
SURFACE	12 1/4	13	770
PRODUCTION	7 7/8	770	7,345

Zone Statuses

Zone Name	Status Date	Status	Fluid Type	Job	Prod Method

Casing Strings

Surface, 728.0ftKB

Casing Description	Run Date	OD (in)	Wt/Len (l...)	Grade	Top, MD (ft...)	MD (ftKB)
Surface	5/27/2011	8 5/8	24.00	J-55	13.0	728.0

Production, 7,335.0ftKB

Casing Description	Run Date	OD (in)	Wt/Len (l...)	Grade	Top, MD (ft...)	MD (ftKB)
Production	5/31/2011	4 1/2	11.60	M-80	13.0	7,335.0

Cement

Description	Top Depth (ftKB)	Bottom Depth (ftKB)
Surface Casing Cement	13.0	728.0
Description	Top Depth (ftKB)	Bottom Depth (ftKB)
Production Casing Cement	1,933.0	7,335.0

Tubing Strings

Tubing Description	Run Date	String...	ID (in)	Wt (lb/ft)	Grade	Len (ft)	Set De...
--------------------	----------	-----------	---------	------------	-------	----------	-----------

Perforation Data

Zone	Bnch/St g	Entered Shot Total	Top (ftKB)	Btm (ftKB)	Date

Other In Hole

Run Date	Des	OD (in)	Top (ftKB)	Btm (ftKB)

Logs

Date	Type	Top, MD (ftKB)	Btm, MD (ftKB)
5/29/2011	MUD LOG	5,900.0	7,345.0
5/31/2011	DIRECTIONAL LOG	728.0	7,335.0
5/31/2011	SPECTRAL DENSITY/Pe/DSN NEUTRON/SP/ARRAY COMPENSATED TRUE RESISTIVITY	728.0	7,335.0
5/31/2011	SPECTRAL GAMMA RAY	728.0	7,335.0
6/9/2011	CBL/CCL/GR	1,698.0	7,251.0
2/23/2013	GYRO	13.0	7,200.0