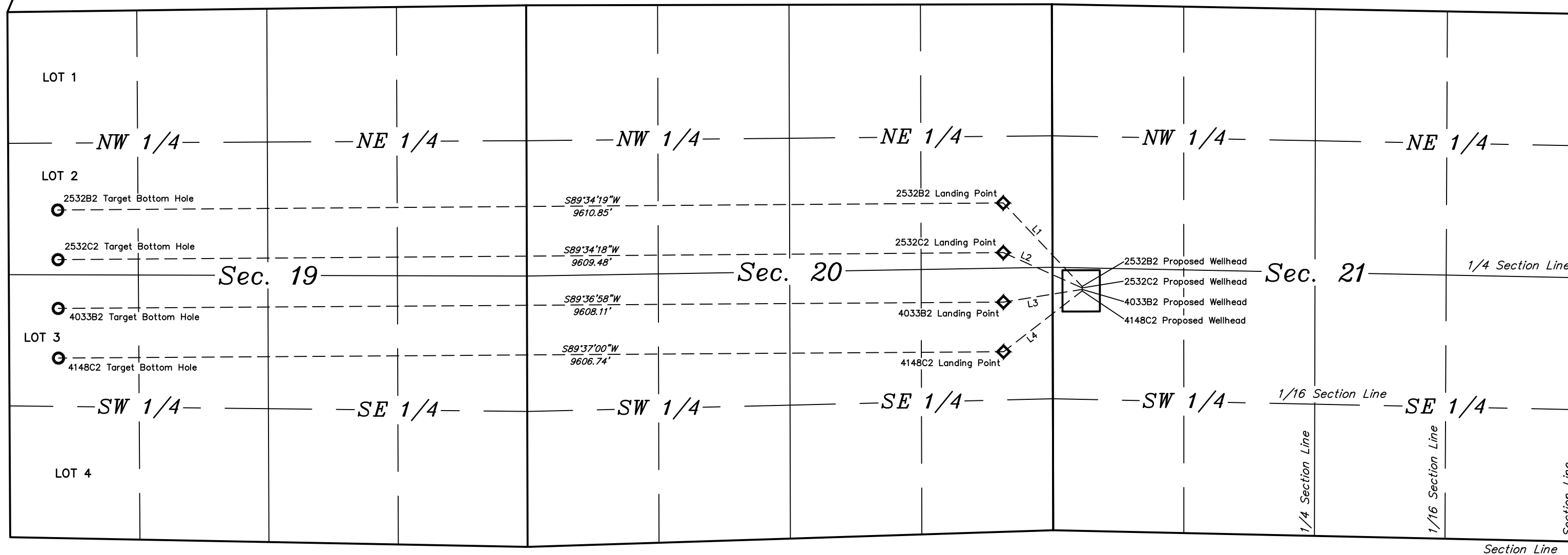




| LINE TABLE | | |
|------------|-------------|----------|
| LINE | DIRECTION | LENGTH |
| L1 | N43°21'47"W | 1168.33' |
| L2 | N65°49'51"W | 878.03' |
| L3 | S80°49'01"W | 810.14' |
| L4 | S52°11'16"W | 1010.58' |



LEGEND:

-  = TARGET BOTTOM HOLE.
 = LANDING POINT.

REV: 1 10-07-16 C.C. (PAD CHANGE)

BILL BARRETT CORPORATION

HAWKINS 5-61-20 19 SW 21 PAD
NW 1/4 SW 1/4, SECTION 21, T5N, R61W, 6th P.M.
WELD COUNTY, COLORADO

| | | | |
|------------------------|----------------------|----------|------------------|
| SURVEYED BY | DALLAS NIELSON, G.W. | 08-19-16 | SCALE |
| DRAWN BY | C.D.L. | 09-28-16 | 1" = 1000' |
| MULTI-WELL PLAN | | | FIGURE #5 |



UELS, LLC
Corporate Office * 85 South 200 East
Vernal, UT 84078 * (435) 789-1017