

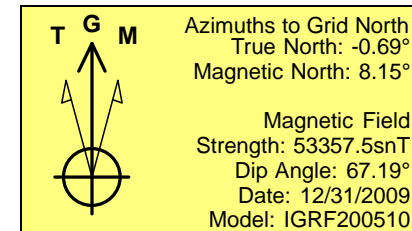
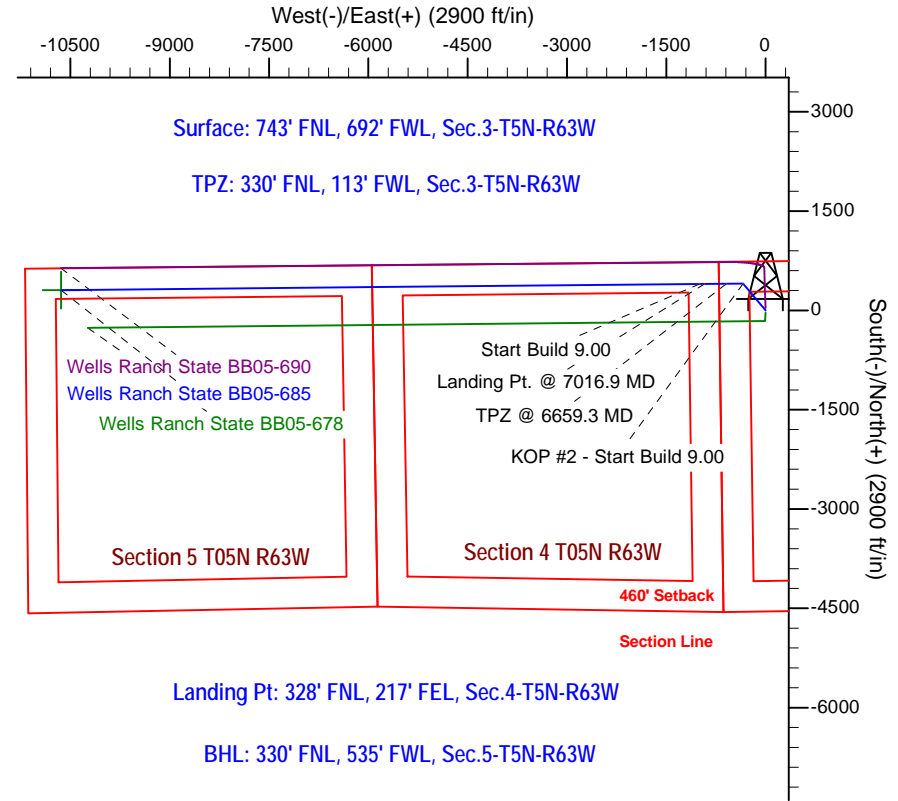
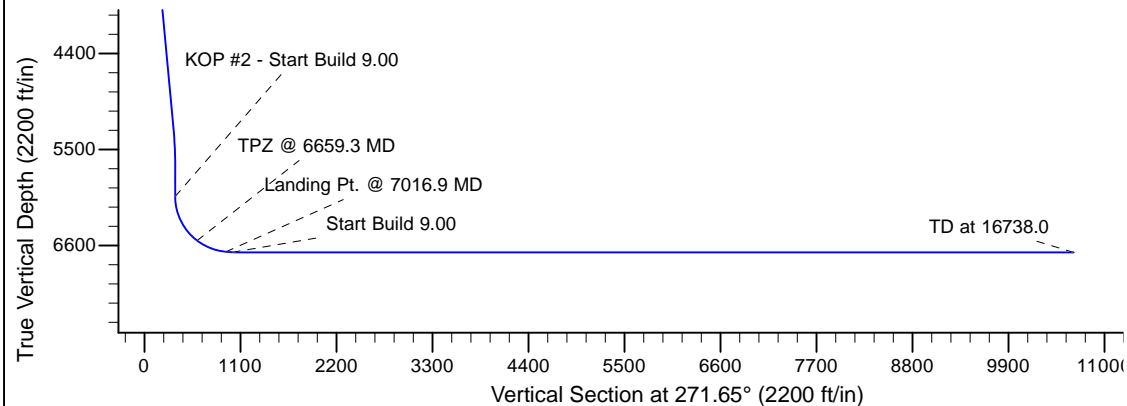
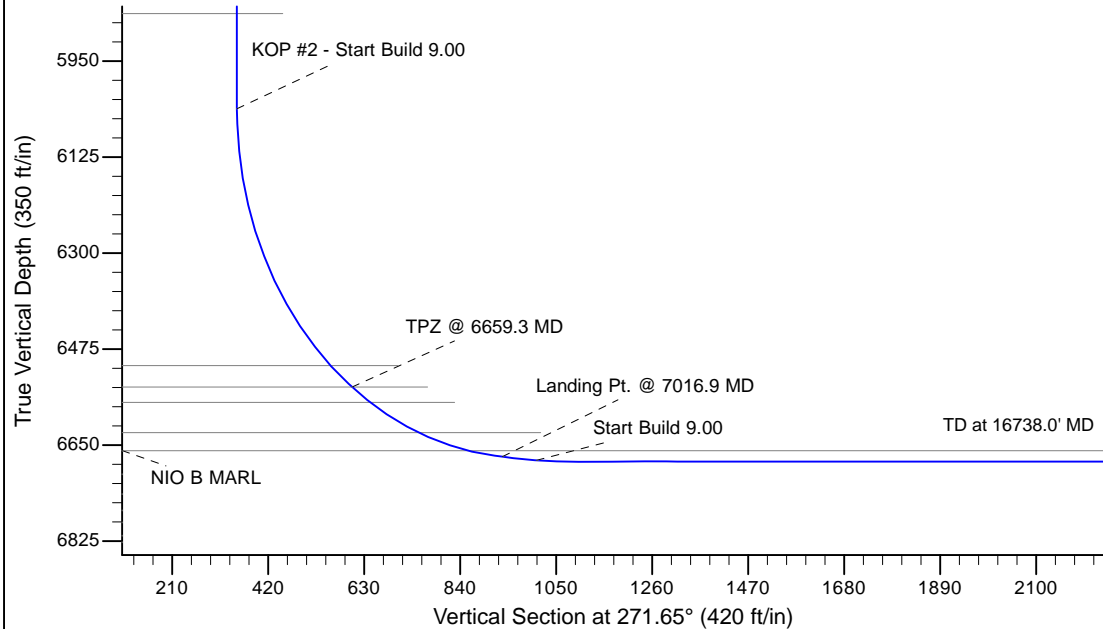
Project: Wattenberg Field
Site: BB (Sec.3-T05N-R63W) Weld County, CO
Well: Wells Ranch State BB05-685
Wellbore: Original Drilling
Design: APD - Rev 1

Northern Region Drilling - Working

Geodetic System: US State Plane 1983
Datum: North American Datum 1983
Ellipsoid: GRS 1980
Zone: Colorado Northern Zone
System Datum: Mean Sea Level

SECTION DETAILS

Sec	MD	Inc	Azi	TVD	+N/-S	+E/-W	Dleg	TFace	VSec	Target
1	0.0	0.00	0.00	0.0	0.0	0.0	0.00	0.00	0.0	
2	1500.0	0.00	0.00	1500.0	0.0	0.0	0.00	0.00	0.0	
3	1899.8	8.00	319.99	1898.5	21.3	-17.9	2.00	319.99	18.5	
4	5300.9	8.00	319.99	5266.5	383.7	-322.1	0.00	0.00	333.0	
5	5700.7	0.00	0.00	5665.0	405.0	-340.0	2.00	180.00	351.6	
6	6072.5	0.00	0.00	6036.8	405.0	-340.0	0.00	0.00	351.6	
7	7016.9	85.00	269.46	6671.0	399.5	-921.1	9.00	269.46	932.3	
8	7091.9	85.00	269.46	6677.6	398.8	-995.8	0.00	0.00	1006.9	
9	7147.5	90.00	269.46	6680.0	398.3	-1051.3	9.00	0.00	1062.4	
10	16738.0	90.00	269.46	6680.0	307.5	-10641.3	0.00	0.00	10645.8	Wells Ranch State BB05-685 BHL 330'FNL, 535'FWL



WELL DETAILS: Wells Ranch State BB05-685

	Northing	Easting	Ground Level	Latitude	Longitude
0.0	0.0	1402604.90	4781.0	40.433620	-104.430070

Plan: APD - Rev 1 (Wells Ranch State BB05-685/Original Drilling)

Created By: Shailey Jewell Date: 6:42, July 18 2016

OK to submit with 2A as per Noble Drilling
7/18/2016 7:46