

# T10N, R58W, 6th P.M.

## LEGEND:

- └─ = 90° SYMBOL
- = PROPOSED WELLHEAD.
- = TARGET BOTTOM HOLE.
- ▲ = SECTION CORNERS LOCATED.

Target  
Bottom Hole

2012 Alum. Cap,  
#28285, 0.1' High  
Lat: 40.816942°  
Long: 103.832336°

2010 Alum. Cap,  
0.3' High  
Lat: 40.816975°  
Long: 103.822819°

2010 Alum. Cap,  
Flush W/Ground  
Lat: 40.816906°  
Long: 103.841850°

N89°43'12"E - 2634.39' (Meas.)

N89°43'12"E - 2634.39' (Meas.)

N00°55'36"W - 2648.12' (Meas.)

S01°13'45"E - 2661.92' (Meas.)

N00°55'36"W - 2648.12' (Meas.)

S01°13'45"E - 2661.92' (Meas.)

Top of Production  
Approx 2539 FNL 1169 FWL  
Hand Drawn 9-21-16

NOTE:  
THE PROPOSED TARGET BOTTOM HOLE FOR  
THIS WELL IS LOCATED IN THE NW 1/4 NW  
1/4 OF SECTION 23, T10N, R58W, 6th P.M.  
AT 100' FNL 1320' FWL. IT BEARS  
N04°19'37"W 8144.97' FROM THE PROPOSED  
WELLHEAD.

26

**RAZOR #26K-2337**

Elev. Graded Ground = 4737.3'

1783'

N04°19'37"W  
8144.97'

2391'

2012 Alum. Cap,  
Flush W/Ground  
Lat: 40.802372°  
Long: 103.831975°

2012 Alum. Cap,  
#28285, 0.1' High  
Lat: 40.809672°  
Long: 103.822617°

2010 Alum. Cap,  
Flush W/Ground  
E/W Fence  
Lat: 40.802375°  
Long: 103.841542°

N89°59'08"W - 2648.64' (Meas.)

N89°59'08"W - 2648.64' (Meas.)

2010 Alum. Cap,  
Flush W/Ground  
Fence Corner  
Lat: 40.802369°  
Long: 103.822411°

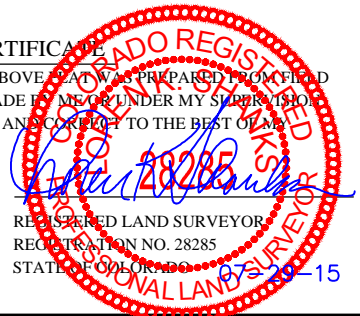
PDOP = 1.3

<b>NAD 83 (SURFACE LOCATION)</b>	
LATITUDE = 40°48'32.17" (40.808936)	
LONGITUDE = 103°50'06.86" (103.835239)	
<b>NAD 27 (SURFACE LOCATION)</b>	
LATITUDE = 40°48'32.22" (40.808950)	
LONGITUDE = 103°50'05.05" (103.834736)	



### CERTIFICATE

THIS IS TO CERTIFY THAT THE ABOVE PLAT WAS PREPARED FROM FIELD NOTES OF ACTUAL SURVEYS MADE BY ME OR UNDER MY SUPERVISION, AND THAT THE SAME ARE TRUE AND CORRECT TO THE BEST OF MY KNOWLEDGE AND BELIEF.



**BASIS OF BEARINGS**  
BASIS OF BEARINGS IS A G.P.S. OBSERVATION

### BASIS OF ELEVATION

SPOT ELEVATION LOCATED AT THE NORTHEAST CORNER OF SECTION 15, T9N, R58W, 6th P.M. TAKEN FROM THE GATEHOOK SPRING, QUADRANGLE, COLORADO, WELD COUNTY, 7.5 MINUTE QUAD (TOPOGRAPHIC MAP) PUBLISHED BY THE UNITED STATES DEPARTMENT OF THE INTERIOR, GEOLOGICAL SURVEY. SAID ELEVATION IS MARKED AS BEING 4679 FEET.

## WHITING OIL & GAS CORP.

**RAZOR #26K-2337 (SURFACE LOCATION)**  
NE 1/4 SW 1/4, SECTION 26, T10N, R58W, 6th P.M.  
WELD COUNTY, COLORADO

SURVEYED BY: JARED CHRISTOPHER, D.W.	DATE: 06-15-15
DRAWN BY: N.F.	DATE DRAWN: 07-02-15
SCALE: 1" = 1000'	REVISED: 07-29-15

## WELL LOCATION PLAT



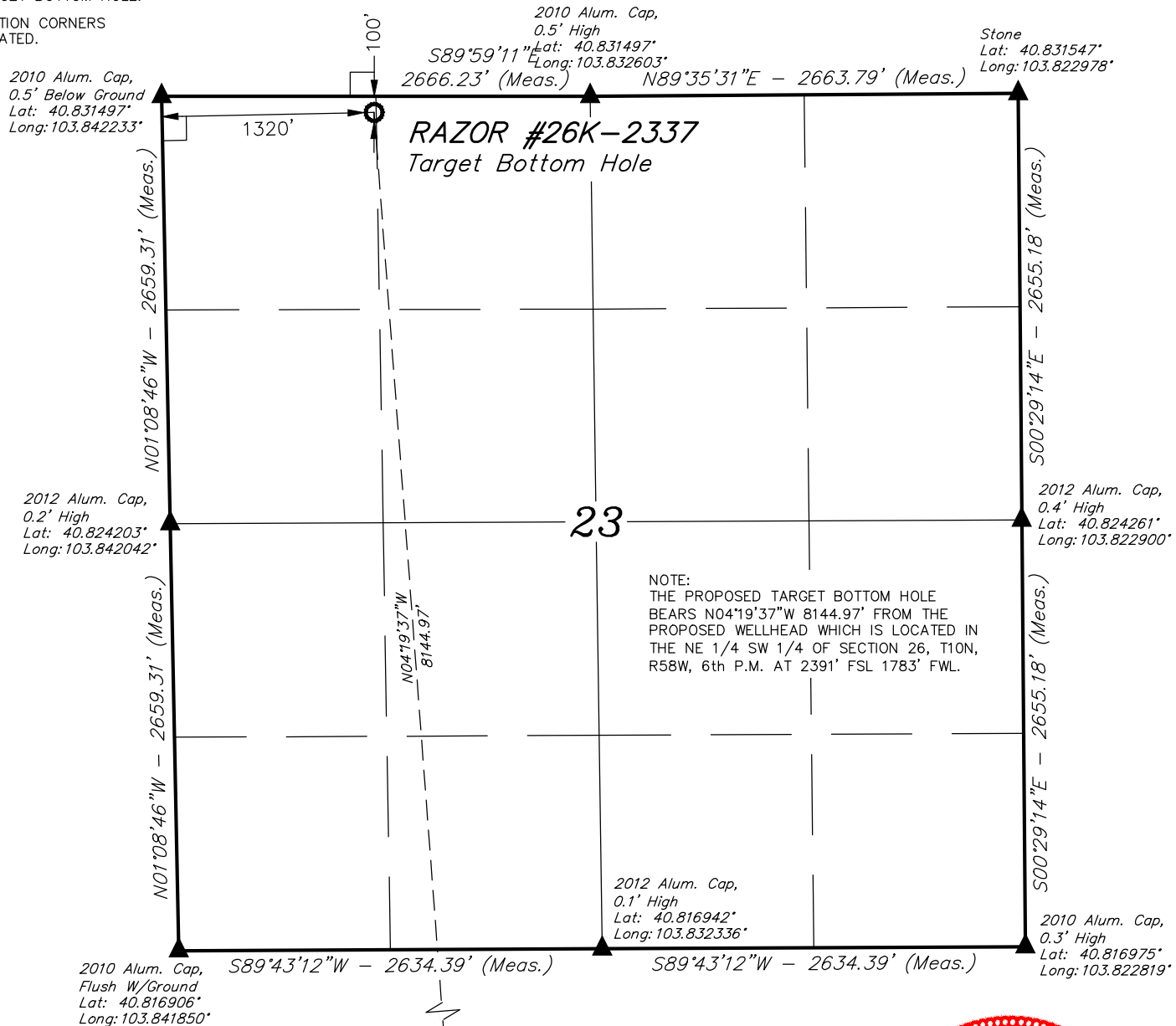
**UELS, LLC**  
Corporate Office \* 85 South 200 East  
Vernal, UT 84078 \* (435) 789-1017



# T10N, R58W, 6th P.M.

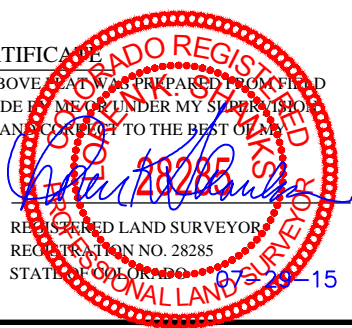
## LEGEND:

- └─┘ = 90° SYMBOL
- = PROPOSED WELLHEAD.
- = TARGET BOTTOM HOLE.
- ▲ = SECTION CORNERS LOCATED.



NOTE:  
 THE PROPOSED TARGET BOTTOM HOLE BEARS N04°19'37"W 8144.97' FROM THE PROPOSED WELLHEAD WHICH IS LOCATED IN THE NE 1/4 SW 1/4 OF SECTION 26, T10N, R58W, 6th P.M. AT 2391' FSL 1783' FWL.

CERTIFICATE  
 THIS IS TO CERTIFY THAT THE ABOVE PLAT WAS PREPARED FROM FIELD NOTES OF ACTUAL SURVEYS MADE BY ME OR UNDER MY SUPERVISION AND THAT THE SAME ARE TRUE AND CORRECT TO THE BEST OF MY KNOWLEDGE AND BELIEF.



<b>NAD 83 (TARGET BOTTOM HOLE)</b>
LATITUDE = 40°49'52.40" (40.831222)
LONGITUDE = 103°50'14.85" (103.837458)
<b>NAD 27 (TARGET BOTTOM HOLE)</b>
LATITUDE = 40°49'52.45" (40.831236)
LONGITUDE = 103°50'13.04" (103.836956)



**BASIS OF BEARINGS**  
 BASIS OF BEARINGS IS A G.P.S. OBSERVATION

**BASIS OF ELEVATION**

SPOT ELEVATION LOCATED AT THE NORTHEAST CORNER OF SECTION 15, T9N, R58W, 6th P.M. TAKEN FROM THE GATEHOOK SPRING, QUADRANGLE, COLORADO, WELD COUNTY, 7.5 MINUTE QUAD (TOPOGRAPHIC MAP) PUBLISHED BY THE UNITED STATES DEPARTMENT OF THE INTERIOR, GEOLOGICAL SURVEY. SAID ELEVATION IS MARKED AS BEING 4679 FEET.

## WHITING OIL & GAS CORP.

**RAZOR #26K-2337 (TARGET BOTTOM HOLE)**  
 NW 1/4 NW 1/4, SECTION 23, T10N, R58W, 6th P.M.  
 WELD COUNTY, COLORADO

SURVEYED BY: JARED CHRISTOPHER, D.W.	DATE: 06-15-15
DRAWN BY: N.F.	DATE DRAWN: 07-02-15
SCALE: 1" = 1000'	REVISED: 07-29-15

## WELL LOCATION PLAT



**UELS, LLC**  
 Corporate Office \* 85 South 200 East  
 Vernal, UT 84078 \* (435) 789-1017

