

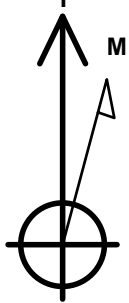
Bayswater Exploration & Production, LLC

Well Name: **Wilkinson A-12HN**

Surface Location: Wilkinson 1-P Pad Sec.1-T6N-R65W
North American Datum 1983 , US State Plane 1983, Colorado Northern Zone
Ground Elevation: 4778.0
+N/-S +E/-W Northing Easting Latitude Longitude Slot
0.0 0.0 1429424.03 3244803.96 40.508834 -104.619596
RKB - 22' WELL @ 4800.0ft (RKB - 22')

WELLBORE TARGET DETAILS

Name	TVD	+N/-S	+E/-W	Shape
SHL 316'FSL, 300'FWL, SEC.1	1.0	0.0	0.0	Point
BHL 2230'FNL, 140'FWL, SEC.13	7040.0	-7810.6	-230.6	Point
LPL 450'FNL, 140'FWL, SEC.12	7067.0	-762.1	-167.4	Point



Azimuths to True North
Magnetic North: 8.07°

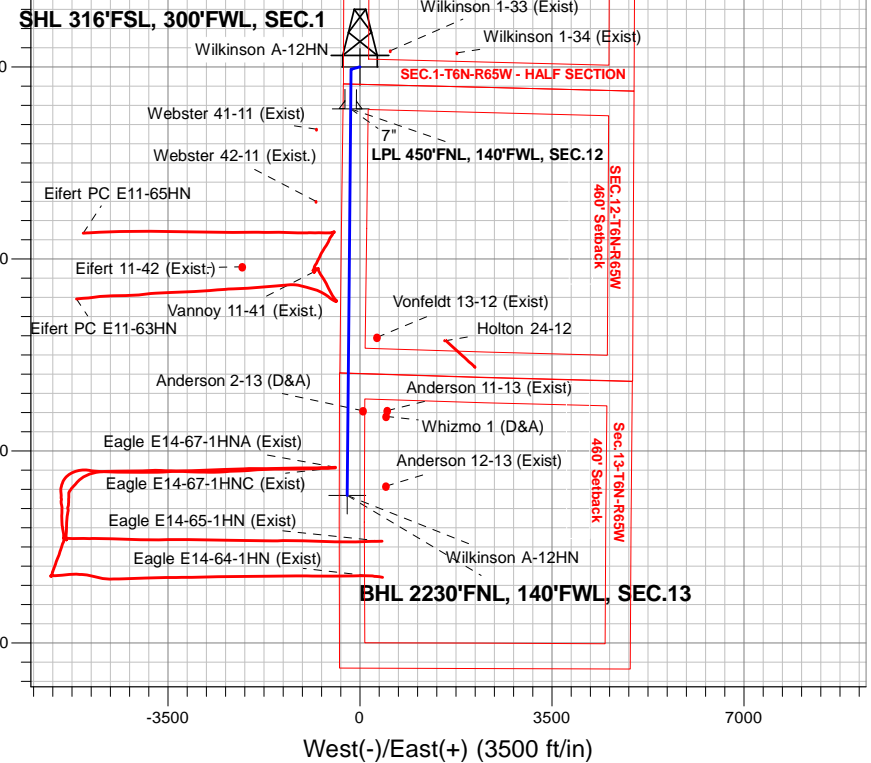
Magnetic Field
Strength: 52640.0nT
Dip Angle: 66.97°
Date: 10/19/2016
Model: IGRF2010

Wilkinson 1-P Pad Sec.1-T6N-R65W
Wilkinson A-12HN
Plan #2 (10-18-16)
15:21, October 19 2016

ANNOTATIONS

TVD	MD	Annotation
1500.0	1500.0	KOP - Start Build 1.50
2824.2	2832.8	Start Drop -2.00
6350.8	6360.5	Start Build 8.00
7067.0	7488.3	Start DLS 0.50 TFO 99.40
7067.0	7488.9	Start 7048.1 hold at 7488.9 MD
7040.0	14537.1	TD at 14537.1

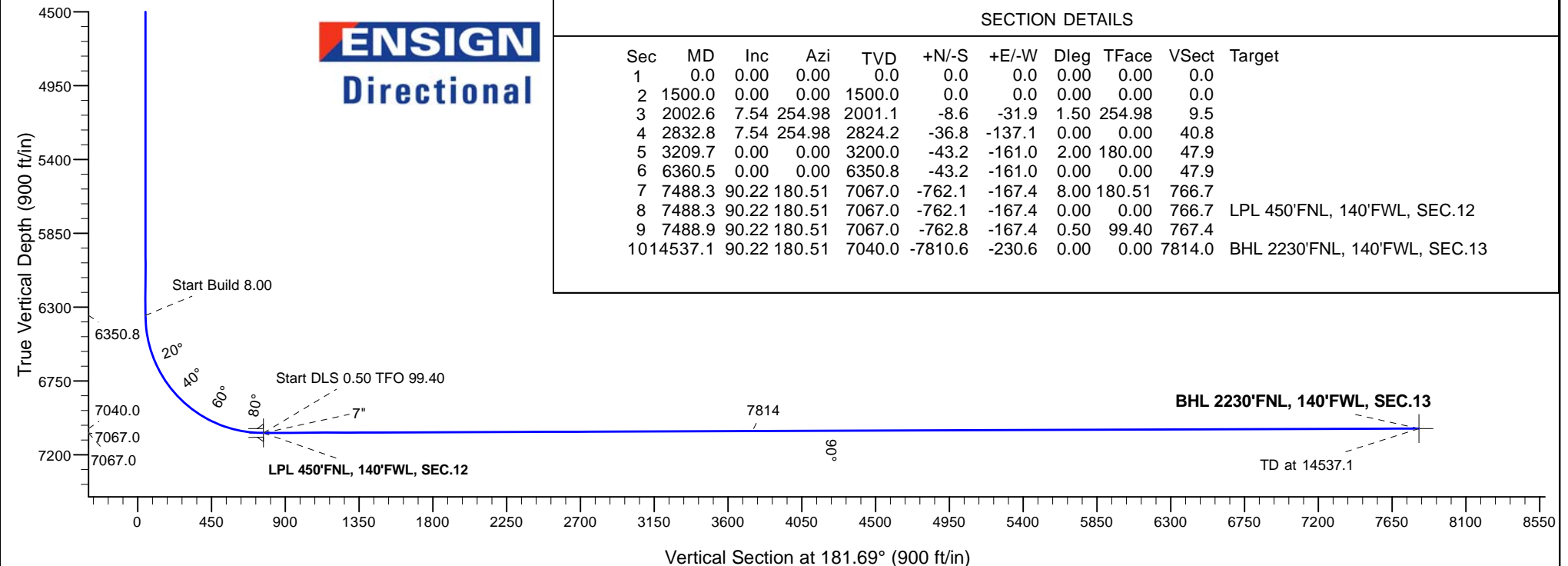
South(-)/North(+) (3500 ft/in)



ENSIGN
Directional

SECTION DETAILS

Sec	MD	Inc	Azi	TVD	+N/-S	+E/-W	Dleg	TFace	VSect	Target
1	0.0	0.00	0.00	0.0	0.0	0.0	0.00	0.00	0.0	
2	1500.0	0.00	0.00	1500.0	0.0	0.0	0.00	0.00	0.0	
3	2002.6	7.54	254.98	2001.1	-8.6	-31.9	1.50	254.98	9.5	
4	2832.8	7.54	254.98	2824.2	-36.8	-137.1	0.00	0.00	40.8	
5	3209.7	0.00	0.00	3200.0	-43.2	-161.0	2.00	180.00	47.9	
6	6360.5	0.00	0.00	6350.8	-43.2	-161.0	0.00	0.00	47.9	
7	7488.3	90.22	180.51	7067.0	-762.1	-167.4	8.00	180.51	766.7	
8	7488.3	90.22	180.51	7067.0	-762.1	-167.4	0.00	0.00	766.7	LPL 450'FNL, 140'FWL, SEC.12
9	7488.9	90.22	180.51	7067.0	-762.8	-167.4	0.50	99.40	767.4	
10	14537.1	90.22	180.51	7040.0	-7810.6	-230.6	0.00	0.00	7814.0	BHL 2230'FNL, 140'FWL, SEC.13





Bayswater Exploration & Production, LLC

SEC.1-T6N-R65W

Wilkinson 1-P Pad Sec.1-T6N-R65W

Wilkinson A-12HN

Wellbore #1

Plan: Plan #2 (10-18-16)

Standard Planning Report

19 October, 2016



BAYSWATER
EXPLORATION & PRODUCTION, LLC

Database:	US_EDM	Local Co-ordinate Reference:	Well Wilkinson A-12HN
Company:	Bayswater Exploration & Production, LLC	TVD Reference:	WELL @ 4800.0ft (RKB - 22')
Project:	SEC.1-T6N-R65W	MD Reference:	WELL @ 4800.0ft (RKB - 22')
Site:	Wilkinson 1-P Pad Sec.1-T6N-R65W	North Reference:	True
Well:	Wilkinson A-12HN	Survey Calculation Method:	Minimum Curvature
Wellbore:	Wellbore #1		
Design:	Plan #2 (10-18-16)		

Project	SEC.1-T6N-R65W, Weld County, Colorado		
Map System:	US State Plane 1983	System Datum:	Mean Sea Level
Geo Datum:	North American Datum 1983		Using Well Reference Point
Map Zone:	Colorado Northern Zone		Using geodetic scale factor

Site		Wilkinson 1-P Pad Sec.1-T6N-R65W			
Site Position:		Northing:	1,429,424.05 usft	Latitude:	40.508834
From:	Lat/Long	Easting:	3,244,803.97 usft	Longitude:	-104.619596
Position Uncertainty:	0.0 ft	Slot Radius:	13-3/16 "	Grid Convergence:	0.57

Well	Wilkinson A-12HN					
Well Position	+N/-S	0.0 ft	Northing:	1,429,424.03 usft	Latitude:	40.508834
	+E/-W	0.0 ft	Easting:	3,244,803.97 usft	Longitude:	-104.619596
Position Uncertainty		0.0 ft	Wellhead Elevation:		Ground Level:	4,778.0 ft

Wellbore	Wellbore #1				
Magnetics	Model Name	Sample Date	Declination (°)	Dip Angle (°)	Field Strength (nT)
	IGRF2010	10/19/2016	8.07	66.97	52,640

Design	Plan #2 (10-18-16)			
Audit Notes:				
Version:	Phase:	PROTOTYPE	Tie On Depth:	0.0
Vertical Section:	Depth From (TVD)	+N/-S	+E/-W	Direction
	(ft)	(ft)	(ft)	(°)
	0.0	0.0	0.0	181.69

Plan Sections										
Measured Depth (ft)	Inclination (°)	Azimuth (°)	Vertical Depth (ft)	+N/-S (ft)	+E/-W (ft)	Dogleg Rate (°/100usft)	Build Rate (°/100usft)	Turn Rate (°/100usft)	TFO (°)	Target
0.0	0.00	0.00	0.0	0.0	0.0	0.00	0.00	0.00	0.00	
1,500.0	0.00	0.00	1,500.0	0.0	0.0	0.00	0.00	0.00	0.00	
2,002.6	7.54	254.98	2,001.1	-8.6	-31.9	1.50	1.50	0.00	254.98	
2,832.8	7.54	254.98	2,824.2	-36.8	-137.1	0.00	0.00	0.00	0.00	
3,209.7	0.00	0.00	3,200.0	-43.2	-161.0	2.00	-2.00	0.00	180.00	
6,360.5	0.00	0.00	6,350.8	-43.2	-161.0	0.00	0.00	0.00	0.00	
7,488.3	90.22	180.51	7,067.0	-762.1	-167.4	8.00	8.00	0.00	180.51	
7,488.3	90.22	180.51	7,067.0	-762.1	-167.4	0.00	0.00	0.00	0.00	LPL 450'FNL, 140'FW
7,488.9	90.22	180.51	7,067.0	-762.8	-167.4	0.50	-0.08	0.49	99.40	
14,537.1	90.22	180.51	7,040.0	-7,810.6	-230.6	0.00	0.00	0.00	0.00	BHL 2230'FNL, 140'F'

Database:	US_EDM	Local Co-ordinate Reference:	Well Wilkinson A-12HN
Company:	Bayswater Exploration & Production, LLC	TVD Reference:	WELL @ 4800.0ft (RKB - 22')
Project:	SEC.1-T6N-R65W	MD Reference:	WELL @ 4800.0ft (RKB - 22')
Site:	Wilkinson 1-P Pad Sec.1-T6N-R65W	North Reference:	True
Well:	Wilkinson A-12HN	Survey Calculation Method:	Minimum Curvature
Wellbore:	Wellbore #1		
Design:	Plan #2 (10-18-16)		

Planned Survey									
Measured Depth (ft)	Inclination (°)	Azimuth (°)	Vertical Depth (ft)	+N/-S (ft)	+E/-W (ft)	Vertical Section (ft)	Dogleg Rate (°/100usft)	Build Rate (°/100usft)	Turn Rate (°/100usft)
0.0	0.00	0.00	0.0	0.0	0.0	0.0	0.00	0.00	0.00
100.0	0.00	0.00	100.0	0.0	0.0	0.0	0.00	0.00	0.00
200.0	0.00	0.00	200.0	0.0	0.0	0.0	0.00	0.00	0.00
300.0	0.00	0.00	300.0	0.0	0.0	0.0	0.00	0.00	0.00
400.0	0.00	0.00	400.0	0.0	0.0	0.0	0.00	0.00	0.00
500.0	0.00	0.00	500.0	0.0	0.0	0.0	0.00	0.00	0.00
600.0	0.00	0.00	600.0	0.0	0.0	0.0	0.00	0.00	0.00
700.0	0.00	0.00	700.0	0.0	0.0	0.0	0.00	0.00	0.00
800.0	0.00	0.00	800.0	0.0	0.0	0.0	0.00	0.00	0.00
900.0	0.00	0.00	900.0	0.0	0.0	0.0	0.00	0.00	0.00
1,000.0	0.00	0.00	1,000.0	0.0	0.0	0.0	0.00	0.00	0.00
1,100.0	0.00	0.00	1,100.0	0.0	0.0	0.0	0.00	0.00	0.00
1,200.0	0.00	0.00	1,200.0	0.0	0.0	0.0	0.00	0.00	0.00
1,300.0	0.00	0.00	1,300.0	0.0	0.0	0.0	0.00	0.00	0.00
1,400.0	0.00	0.00	1,400.0	0.0	0.0	0.0	0.00	0.00	0.00
1,500.0	0.00	0.00	1,500.0	0.0	0.0	0.0	0.00	0.00	0.00
KOP - Start Build 1.50									
1,600.0	1.50	254.98	1,600.0	-0.3	-1.3	0.4	1.50	1.50	0.00
1,700.0	3.00	254.98	1,699.9	-1.4	-5.1	1.5	1.50	1.50	0.00
1,800.0	4.50	254.98	1,799.7	-3.1	-11.4	3.4	1.50	1.50	0.00
1,900.0	6.00	254.98	1,899.3	-5.4	-20.2	6.0	1.50	1.50	0.00
2,000.0	7.50	254.98	1,998.6	-8.5	-31.6	9.4	1.50	1.50	0.00
2,002.6	7.54	254.98	2,001.1	-8.6	-31.9	9.5	1.50	1.50	0.00
2,100.0	7.54	254.98	2,097.7	-11.9	-44.2	13.2	0.00	0.00	0.00
2,200.0	7.54	254.98	2,196.8	-15.3	-56.9	16.9	0.00	0.00	0.00
2,300.0	7.54	254.98	2,296.0	-18.7	-69.6	20.7	0.00	0.00	0.00
2,400.0	7.54	254.98	2,395.1	-22.1	-82.2	24.5	0.00	0.00	0.00
2,500.0	7.54	254.98	2,494.3	-25.5	-94.9	28.3	0.00	0.00	0.00
2,600.0	7.54	254.98	2,593.4	-28.9	-107.6	32.0	0.00	0.00	0.00
2,700.0	7.54	254.98	2,692.5	-32.3	-120.3	35.8	0.00	0.00	0.00
2,800.0	7.54	254.98	2,791.7	-35.7	-132.9	39.6	0.00	0.00	0.00
2,832.8	7.54	254.98	2,824.2	-36.8	-137.1	40.8	0.00	0.00	0.00
Start Drop -2.00									
2,900.0	6.19	254.98	2,890.9	-38.9	-144.8	43.1	2.00	-2.00	0.00
3,000.0	4.19	254.98	2,990.5	-41.2	-153.6	45.7	2.00	-2.00	0.00
3,100.0	2.19	254.98	3,090.3	-42.7	-159.0	47.3	2.00	-2.00	0.00
3,200.0	0.19	254.98	3,190.3	-43.2	-161.0	47.9	2.00	-2.00	0.00
3,209.7	0.00	0.00	3,200.0	-43.2	-161.0	47.9	2.00	-2.00	0.00
3,300.0	0.00	0.00	3,290.3	-43.2	-161.0	47.9	0.00	0.00	0.00
3,400.0	0.00	0.00	3,390.3	-43.2	-161.0	47.9	0.00	0.00	0.00
3,500.0	0.00	0.00	3,490.3	-43.2	-161.0	47.9	0.00	0.00	0.00
3,600.0	0.00	0.00	3,590.3	-43.2	-161.0	47.9	0.00	0.00	0.00
3,700.0	0.00	0.00	3,690.3	-43.2	-161.0	47.9	0.00	0.00	0.00
3,800.0	0.00	0.00	3,790.3	-43.2	-161.0	47.9	0.00	0.00	0.00
3,900.0	0.00	0.00	3,890.3	-43.2	-161.0	47.9	0.00	0.00	0.00
4,000.0	0.00	0.00	3,990.3	-43.2	-161.0	47.9	0.00	0.00	0.00
4,100.0	0.00	0.00	4,090.3	-43.2	-161.0	47.9	0.00	0.00	0.00
4,200.0	0.00	0.00	4,190.3	-43.2	-161.0	47.9	0.00	0.00	0.00
4,300.0	0.00	0.00	4,290.3	-43.2	-161.0	47.9	0.00	0.00	0.00
4,400.0	0.00	0.00	4,390.3	-43.2	-161.0	47.9	0.00	0.00	0.00
4,500.0	0.00	0.00	4,490.3	-43.2	-161.0	47.9	0.00	0.00	0.00
4,600.0	0.00	0.00	4,590.3	-43.2	-161.0	47.9	0.00	0.00	0.00
4,700.0	0.00	0.00	4,690.3	-43.2	-161.0	47.9	0.00	0.00	0.00
4,800.0	0.00	0.00	4,790.3	-43.2	-161.0	47.9	0.00	0.00	0.00

Database:	US_EDM	Local Co-ordinate Reference:	Well Wilkinson A-12HN
Company:	Bayswater Exploration & Production, LLC	TVD Reference:	WELL @ 4800.0ft (RKB - 22')
Project:	SEC.1-T6N-R65W	MD Reference:	WELL @ 4800.0ft (RKB - 22')
Site:	Wilkinson 1-P Pad Sec.1-T6N-R65W	North Reference:	True
Well:	Wilkinson A-12HN	Survey Calculation Method:	Minimum Curvature
Wellbore:	Wellbore #1		
Design:	Plan #2 (10-18-16)		

Planned Survey									
Measured Depth (ft)	Inclination (°)	Azimuth (°)	Vertical Depth (ft)	+N/-S (ft)	+E/-W (ft)	Vertical Section (ft)	Dogleg Rate (°/100usft)	Build Rate (°/100usft)	Turn Rate (°/100usft)
4,900.0	0.00	0.00	4,890.3	-43.2	-161.0	47.9	0.00	0.00	0.00
5,000.0	0.00	0.00	4,990.3	-43.2	-161.0	47.9	0.00	0.00	0.00
5,100.0	0.00	0.00	5,090.3	-43.2	-161.0	47.9	0.00	0.00	0.00
5,200.0	0.00	0.00	5,190.3	-43.2	-161.0	47.9	0.00	0.00	0.00
5,300.0	0.00	0.00	5,290.3	-43.2	-161.0	47.9	0.00	0.00	0.00
5,400.0	0.00	0.00	5,390.3	-43.2	-161.0	47.9	0.00	0.00	0.00
5,500.0	0.00	0.00	5,490.3	-43.2	-161.0	47.9	0.00	0.00	0.00
5,600.0	0.00	0.00	5,590.3	-43.2	-161.0	47.9	0.00	0.00	0.00
5,700.0	0.00	0.00	5,690.3	-43.2	-161.0	47.9	0.00	0.00	0.00
5,800.0	0.00	0.00	5,790.3	-43.2	-161.0	47.9	0.00	0.00	0.00
5,900.0	0.00	0.00	5,890.3	-43.2	-161.0	47.9	0.00	0.00	0.00
6,000.0	0.00	0.00	5,990.3	-43.2	-161.0	47.9	0.00	0.00	0.00
6,100.0	0.00	0.00	6,090.3	-43.2	-161.0	47.9	0.00	0.00	0.00
6,200.0	0.00	0.00	6,190.3	-43.2	-161.0	47.9	0.00	0.00	0.00
6,300.0	0.00	0.00	6,290.3	-43.2	-161.0	47.9	0.00	0.00	0.00
6,360.5	0.00	0.00	6,350.8	-43.2	-161.0	47.9	0.00	0.00	0.00
Start Build 8.00									
6,400.0	3.16	180.51	6,390.3	-44.3	-161.0	49.0	7.99	7.99	0.00
6,500.0	11.16	180.51	6,489.4	-56.7	-161.1	61.5	8.00	8.00	0.00
6,600.0	19.16	180.51	6,585.9	-82.9	-161.4	87.6	8.00	8.00	0.00
6,700.0	27.16	180.51	6,677.7	-122.2	-161.7	126.9	8.00	8.00	0.00
6,800.0	35.16	180.51	6,763.2	-173.9	-162.2	178.6	8.00	8.00	0.00
6,900.0	43.16	180.51	6,840.7	-236.9	-162.7	241.6	8.00	8.00	0.00
7,000.0	51.16	180.51	6,908.6	-310.2	-163.4	314.9	8.00	8.00	0.00
7,100.0	59.16	180.51	6,965.7	-392.2	-164.1	396.9	8.00	8.00	0.00
7,200.0	67.16	180.51	7,010.8	-481.4	-164.9	486.0	8.00	8.00	0.00
7,300.0	75.16	180.51	7,043.1	-575.9	-165.7	580.6	8.00	8.00	0.00
7,400.0	83.16	180.51	7,061.9	-674.1	-166.6	678.7	8.00	8.00	0.00
7,488.3	90.22	180.51	7,067.0	-762.1	-167.4	766.8	8.00	8.00	0.00
Start DLS 0.50 TFO 99.40									
7,488.9	90.22	180.51	7,067.0	-762.7	-167.4	767.4	0.51	-0.08	0.50
Start 7048.1 hold at 7488.9 MD									
7,500.0	90.22	180.51	7,067.0	-773.8	-167.5	778.5	0.00	0.00	0.00
7,600.0	90.22	180.51	7,066.6	-873.8	-168.4	878.4	0.00	0.00	0.00
7,700.0	90.22	180.51	7,066.2	-973.8	-169.3	978.4	0.00	0.00	0.00
7,800.0	90.22	180.51	7,065.8	-1,073.8	-170.2	1,078.4	0.00	0.00	0.00
7,900.0	90.22	180.51	7,065.4	-1,173.8	-171.1	1,178.4	0.00	0.00	0.00
8,000.0	90.22	180.51	7,065.0	-1,273.8	-172.0	1,278.3	0.00	0.00	0.00
8,100.0	90.22	180.51	7,064.7	-1,373.8	-172.9	1,378.3	0.00	0.00	0.00
8,200.0	90.22	180.51	7,064.3	-1,473.8	-173.8	1,478.3	0.00	0.00	0.00
8,300.0	90.22	180.51	7,063.9	-1,573.8	-174.7	1,578.3	0.00	0.00	0.00
8,400.0	90.22	180.51	7,063.5	-1,673.8	-175.6	1,678.3	0.00	0.00	0.00
8,500.0	90.22	180.51	7,063.1	-1,773.8	-176.5	1,778.2	0.00	0.00	0.00
8,600.0	90.22	180.51	7,062.7	-1,873.8	-177.4	1,878.2	0.00	0.00	0.00
8,700.0	90.22	180.51	7,062.4	-1,973.8	-178.3	1,978.2	0.00	0.00	0.00
8,800.0	90.22	180.51	7,062.0	-2,073.8	-179.2	2,078.2	0.00	0.00	0.00
8,900.0	90.22	180.51	7,061.6	-2,173.8	-180.1	2,178.1	0.00	0.00	0.00
9,000.0	90.22	180.51	7,061.2	-2,273.8	-181.0	2,278.1	0.00	0.00	0.00
9,100.0	90.22	180.51	7,060.8	-2,373.8	-181.9	2,378.1	0.00	0.00	0.00
9,200.0	90.22	180.51	7,060.4	-2,473.8	-182.8	2,478.1	0.00	0.00	0.00
9,300.0	90.22	180.51	7,060.1	-2,573.8	-183.6	2,578.1	0.00	0.00	0.00
9,400.0	90.22	180.51	7,059.7	-2,673.8	-184.5	2,678.0	0.00	0.00	0.00
9,500.0	90.22	180.51	7,059.3	-2,773.8	-185.4	2,778.0	0.00	0.00	0.00

Database:	US_EDM	Local Co-ordinate Reference:	Well Wilkinson A-12HN
Company:	Bayswater Exploration & Production, LLC	TVD Reference:	WELL @ 4800.0ft (RKB - 22')
Project:	SEC.1-T6N-R65W	MD Reference:	WELL @ 4800.0ft (RKB - 22')
Site:	Wilkinson 1-P Pad Sec.1-T6N-R65W	North Reference:	True
Well:	Wilkinson A-12HN	Survey Calculation Method:	Minimum Curvature
Wellbore:	Wellbore #1		
Design:	Plan #2 (10-18-16)		

Planned Survey										
Measured Depth (ft)	Inclination (°)	Azimuth (°)	Vertical Depth (ft)	+N/-S (ft)	+E/-W (ft)	Vertical Section (ft)	Dogleg Rate (°/100usft)	Build Rate (°/100usft)	Turn Rate (°/100usft)	
9,600.0	90.22	180.51	7,058.9	-2,873.7	-186.3	2,878.0	0.00	0.00	0.00	
9,700.0	90.22	180.51	7,058.5	-2,973.7	-187.2	2,978.0	0.00	0.00	0.00	
9,800.0	90.22	180.51	7,058.1	-3,073.7	-188.1	3,077.9	0.00	0.00	0.00	
9,900.0	90.22	180.51	7,057.8	-3,173.7	-189.0	3,177.9	0.00	0.00	0.00	
10,000.0	90.22	180.51	7,057.4	-3,273.7	-189.9	3,277.9	0.00	0.00	0.00	
10,100.0	90.22	180.51	7,057.0	-3,373.7	-190.8	3,377.9	0.00	0.00	0.00	
10,200.0	90.22	180.51	7,056.6	-3,473.7	-191.7	3,477.9	0.00	0.00	0.00	
10,300.0	90.22	180.51	7,056.2	-3,573.7	-192.6	3,577.8	0.00	0.00	0.00	
10,400.0	90.22	180.51	7,055.8	-3,673.7	-193.5	3,677.8	0.00	0.00	0.00	
10,500.0	90.22	180.51	7,055.5	-3,773.7	-194.4	3,777.8	0.00	0.00	0.00	
10,600.0	90.22	180.51	7,055.1	-3,873.7	-195.3	3,877.8	0.00	0.00	0.00	
10,700.0	90.22	180.51	7,054.7	-3,973.7	-196.2	3,977.8	0.00	0.00	0.00	
10,800.0	90.22	180.51	7,054.3	-4,073.7	-197.1	4,077.7	0.00	0.00	0.00	
10,900.0	90.22	180.51	7,053.9	-4,173.7	-198.0	4,177.7	0.00	0.00	0.00	
11,000.0	90.22	180.51	7,053.5	-4,273.7	-198.9	4,277.7	0.00	0.00	0.00	
11,100.0	90.22	180.51	7,053.2	-4,373.7	-199.8	4,377.7	0.00	0.00	0.00	
11,200.0	90.22	180.51	7,052.8	-4,473.7	-200.7	4,477.6	0.00	0.00	0.00	
11,300.0	90.22	180.51	7,052.4	-4,573.7	-201.6	4,577.6	0.00	0.00	0.00	
11,400.0	90.22	180.51	7,052.0	-4,673.7	-202.5	4,677.6	0.00	0.00	0.00	
11,500.0	90.22	180.51	7,051.6	-4,773.7	-203.4	4,777.6	0.00	0.00	0.00	
11,600.0	90.22	180.51	7,051.3	-4,873.7	-204.3	4,877.6	0.00	0.00	0.00	
11,700.0	90.22	180.51	7,050.9	-4,973.6	-205.2	4,977.5	0.00	0.00	0.00	
11,800.0	90.22	180.51	7,050.5	-5,073.6	-206.1	5,077.5	0.00	0.00	0.00	
11,900.0	90.22	180.51	7,050.1	-5,173.6	-207.0	5,177.5	0.00	0.00	0.00	
12,000.0	90.22	180.51	7,049.7	-5,273.6	-207.9	5,277.5	0.00	0.00	0.00	
12,100.0	90.22	180.51	7,049.3	-5,373.6	-208.7	5,377.4	0.00	0.00	0.00	
12,200.0	90.22	180.51	7,049.0	-5,473.6	-209.6	5,477.4	0.00	0.00	0.00	
12,300.0	90.22	180.51	7,048.6	-5,573.6	-210.5	5,577.4	0.00	0.00	0.00	
12,400.0	90.22	180.51	7,048.2	-5,673.6	-211.4	5,677.4	0.00	0.00	0.00	
12,500.0	90.22	180.51	7,047.8	-5,773.6	-212.3	5,777.4	0.00	0.00	0.00	
12,600.0	90.22	180.51	7,047.4	-5,873.6	-213.2	5,877.3	0.00	0.00	0.00	
12,700.0	90.22	180.51	7,047.0	-5,973.6	-214.1	5,977.3	0.00	0.00	0.00	
12,800.0	90.22	180.51	7,046.7	-6,073.6	-215.0	6,077.3	0.00	0.00	0.00	
12,900.0	90.22	180.51	7,046.3	-6,173.6	-215.9	6,177.3	0.00	0.00	0.00	
13,000.0	90.22	180.51	7,045.9	-6,273.6	-216.8	6,277.3	0.00	0.00	0.00	
13,100.0	90.22	180.51	7,045.5	-6,373.6	-217.7	6,377.2	0.00	0.00	0.00	
13,200.0	90.22	180.51	7,045.1	-6,473.6	-218.6	6,477.2	0.00	0.00	0.00	
13,300.0	90.22	180.51	7,044.7	-6,573.6	-219.5	6,577.2	0.00	0.00	0.00	
13,400.0	90.22	180.51	7,044.4	-6,673.6	-220.4	6,677.2	0.00	0.00	0.00	
13,500.0	90.22	180.51	7,044.0	-6,773.6	-221.3	6,777.1	0.00	0.00	0.00	
13,600.0	90.22	180.51	7,043.6	-6,873.6	-222.2	6,877.1	0.00	0.00	0.00	
13,700.0	90.22	180.51	7,043.2	-6,973.6	-223.1	6,977.1	0.00	0.00	0.00	
13,800.0	90.22	180.51	7,042.8	-7,073.5	-224.0	7,077.1	0.00	0.00	0.00	
13,900.0	90.22	180.51	7,042.4	-7,173.5	-224.9	7,177.1	0.00	0.00	0.00	
14,000.0	90.22	180.51	7,042.1	-7,273.5	-225.8	7,277.0	0.00	0.00	0.00	
14,100.0	90.22	180.51	7,041.7	-7,373.5	-226.7	7,377.0	0.00	0.00	0.00	
14,200.0	90.22	180.51	7,041.3	-7,473.5	-227.6	7,477.0	0.00	0.00	0.00	
14,300.0	90.22	180.51	7,040.9	-7,573.5	-228.5	7,577.0	0.00	0.00	0.00	
14,400.0	90.22	180.51	7,040.5	-7,673.5	-229.4	7,676.9	0.00	0.00	0.00	
14,500.0	90.22	180.51	7,040.1	-7,773.5	-230.3	7,776.9	0.00	0.00	0.00	
14,537.1	90.22	180.51	7,040.0	-7,810.6	-230.6	7,814.0	0.00	0.00	0.00	
TD at 14537.1										

Database:	US_EDM	Local Co-ordinate Reference:	Well Wilkinson A-12HN
Company:	Bayswater Exploration & Production, LLC	TVD Reference:	WELL @ 4800.0ft (RKB - 22')
Project:	SEC.1-T6N-R65W	MD Reference:	WELL @ 4800.0ft (RKB - 22')
Site:	Wilkinson 1-P Pad Sec.1-T6N-R65W	North Reference:	True
Well:	Wilkinson A-12HN	Survey Calculation Method:	Minimum Curvature
Wellbore:	Wellbore #1		
Design:	Plan #2 (10-18-16)		

Design Targets										
Target Name - hit/miss target - Shape	Dip Angle (°)	Dip Dir. (°)	TVD (ft)	+N/-S (ft)	+E/-W (ft)	Northing (usft)	Easting (usft)	Latitude	Longitude	
SHL 316'FSL, 300'FWL, - plan hits target center - Point	0.00	0.00	1.0	0.0	0.0	1,429,424.05	3,244,803.97	40.508834	-104.619596	
BHL 2230'FNL, 140'FWL - plan hits target center - Point	0.00	0.00	7,040.0	-7,810.6	-230.6	1,421,611.81	3,244,650.93	40.487395	-104.620425	
LPL 450'FNL, 140'FWL, - plan hits target center - Point	0.00	0.00	7,067.0	-762.1	-167.4	1,428,660.30	3,244,644.14	40.506742	-104.620198	

Casing Points						
Measured Depth (ft)	Vertical Depth (ft)	Name	Casing Diameter (")	Hole Diameter (")		
7,488.3	7,067.0	7"	7	7-1/2		

Plan Annotations					
Measured Depth (ft)	Vertical Depth (ft)	Local Coordinates			
		+N/-S (ft)	+E/-W (ft)	Comment	
1,500.0	1,500.0	0.0	0.0	KOP - Start Build 1.50	
2,832.8	2,824.2	-36.8	-137.1	Start Drop -2.00	
6,360.5	6,350.8	-43.2	-161.0	Start Build 8.00	
7,488.3	7,067.0	-762.1	-167.4	Start DLS 0.50 TFO 99.40	
7,488.9	7,067.0	-762.7	-167.4	Start 7048.1 hold at 7488.9 MD	
14,537.1	7,040.0	-7,810.6	-230.6	TD at 14537.1	