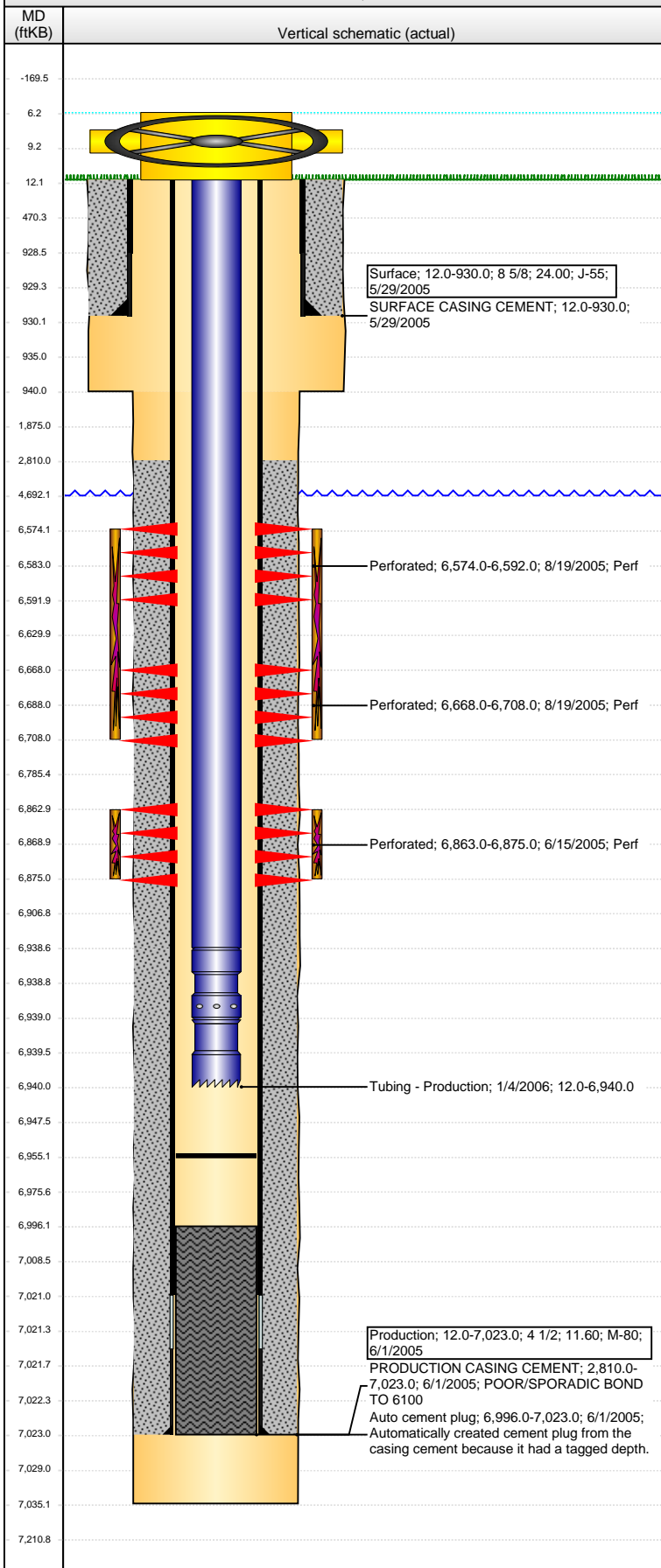


Wellbore Schematic Input Report

Well Name: HOWARD A27-09

VERTICAL - ORIGINAL HOLE, 11/1/2016 1:02:24 PM



Well Header

API 05-123-22832	Business Unit DJ BASIN	District 15	Well Config VERTICAL
Original KB Elevation (ft) 4,692	KB - GL / MSL (ftKB) 12.00	Spud Date 5/23/2005	P & A Date

Comment

CBP SET AT 6770 ON 6/21/2005 AND PUSHED TO BOTTOM ON 1/3/06

TD DEPTH DISCREPENCY - SHOWN AS 7033' AND 7023' ON THE SAME REPORT.

Directions To Well

CO 37 & RD 66, E3/4, S INTO

Congressional Location

Quarter 3 NE	Quarter 4 SE	Section 27	Township 6 N	Twntshp N/S Dir 64 W	Range 64 W
-----------------	-----------------	---------------	-----------------	-------------------------	---------------

Bottom Hole Location

North-South Distance (ft) 1,905.0	From N or S Line FSL	East-West Distance (ft) 756.0	From E or W Line FEL
--------------------------------------	-------------------------	----------------------------------	-------------------------

Plug Back Total Depths

Date	Depth (ftKB)	Method	Com
6/1/2005	6,990.0	CASING TALLY	TOP OF FLOAT COLLAR
6/14/2005	6,966.0	CASED HOLE LOG	CBL DEPTH LOGGER
1/3/2006	6,955.0	TAG	PLUG PUSHED

Wellbore Sections

Section Des	Size (in)	Act Top, MD (ftKB)	Act Btm, MD (ftKB)
SURFACE	12 1/4	12	940
PRODUCTION	7 7/8	940	7,035

Zone Statuses

Zone Name	Status Date	Status	Fluid Type	Job	Prod Method
CODELL	6/21/2005	PR	Water	DRILLING/CO...	Flowing
CODELL	1/3/2006	PR		DRILLING/CO...	
CODELL	10/22/2009	PR		DRILLING/CO...	
NIOBRARA	9/13/2005	PR		DRILLING/CO...	
NIOBRARA	1/3/2006	PR	Water	DRILLING/CO...	Flowing
NIOBRARA	10/22/2009	PR		DRILLING/CO...	
NIOBRARA	12/7/2015	PR		DRILLING/CO...	

Casing Strings

Surface, 930.0ftKB

Casing Description	Run Date	OD (in)	Wt/Len (l...)	Grade	Top, MD (ft...)	MD (ftKB)
Surface	5/29/2005	8 5/8	24.00	J-55	12.0	930.0

Production, 7,023.0ftKB

Casing Description	Run Date	OD (in)	Wt/Len (l...)	Grade	Top, MD (ft...)	MD (ftKB)
Production	6/1/2005	4 1/2	11.60	M-80	12.0	7,023.0

Cement

Description	Top Depth (ftKB)	Bottom Depth (ftKB)
SURFACE CASING CEMENT	12.0	930.0
Description	Top Depth (ftKB)	Bottom Depth (ftKB)
PRODUCTION CASING CEMENT	2,810.0	7,023.0

Tubing Strings

Tubing Description	Run Date	String...	ID (in)	Wt (lb/ft)	Grade	Len (ft)	Set De...
Tubing - Production	1/4/2006	2 3/8	1.995	4.70	J-55	6,928.00	

Tubing Components

Item Des	OD (in)	Wt (lb/ft)	Grade	Jts	Len (ft)	Btm (ftKB)	Btm (TVD) (ftKB)
EUE 8rd Tubing	2 3/8	4.70	J-55	218	6,926.50	6,938.5	
Seal Nipple	2 3/8				0.50	6,939.0	
Notched collar	2 3/8				1.00	6,940.0	

Perforation Data

Zone	Bnch/St g	Entered Shot Total	Top (ftKB)	Btm (ftKB)	Date
NIOBRARA, ORIGINAL HOLE	A	108	6,574.00	6,592.00	8/19/2005
NIOBRARA, ORIGINAL HOLE	B	120	6,668.00	6,708.00	8/19/2005
CODELL, ORIGINAL HOLE		48	6,863.00	6,875.00	6/15/2005

Well Name: HOWARD A27-09

VERTICAL - ORIGINAL HOLE, 11/1/2016 1:02:26 PM

Stimulations & Treatments

Date	Zone	Primary Job Type
6/20/2005	CODELL, ORIGINAL HOLE	DRILLING/COMPLETION - ORIGINAL
Technical Result	Tech Result Details	Tech Result Note
Comment		

Date	Zone	Primary Job Type
9/12/2005	NIOBRARA, ORIGINAL HOLE	DRILLING/COMPLETION - ORIGINAL
Technical Result	Tech Result Details	Tech Result Note
Comment		

Other In Hole

Run Date	Des	OD (in)	Top (ftKB)	Btm (ftKB)

Logs

Date	Type	Top, MD (ftKB)	Btm, MD (ftKB)
6/1/2005	COMPENSATED DENSITY	3,000.0	7,013.0
6/1/2005	INDUCTION	930.0	7,033.0
6/14/2005	CBL/CCL/GR	2,600.0	6,963.0
1/29/2016	GYRO	0.0	6,850.0

