

Photo#1:
View North over Location ;
Associated Facilities Marked with Arrow.



Photo#2:
View South over Location.



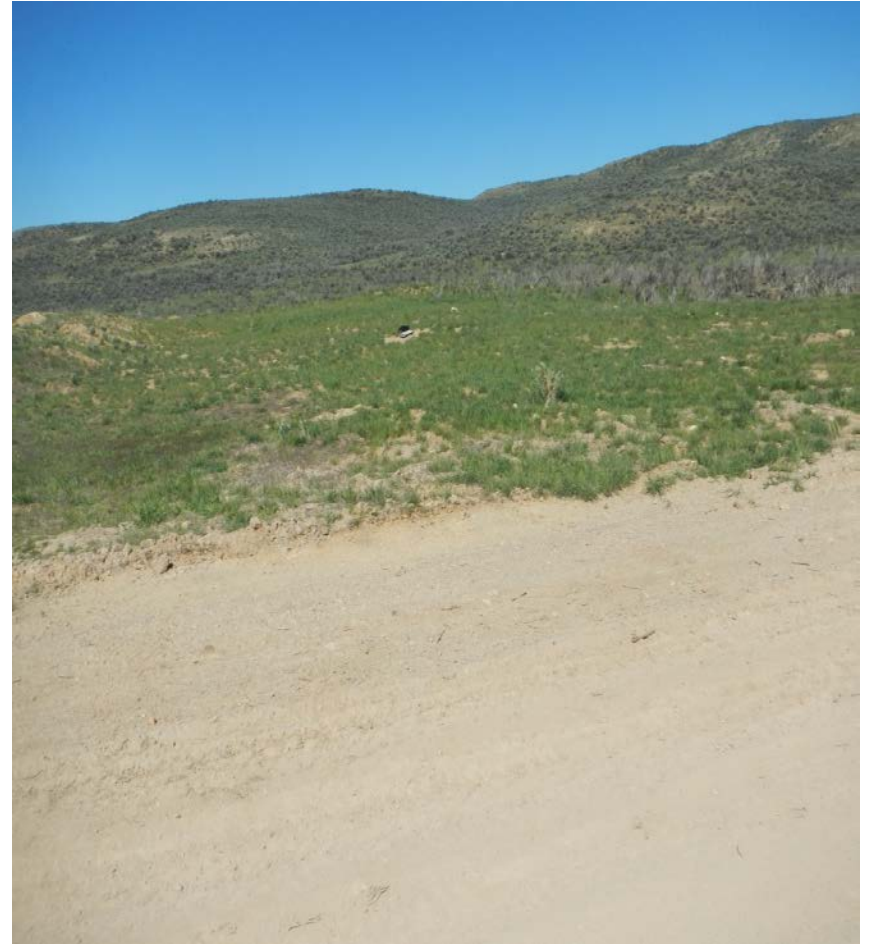
Photo#3:

View East over Location



Photo#4:

View West over Location



Photo#5:
Gravel on Location .



Photo#6:
Concrete wash out on Location



Photo#7:

Debris remains on Location



Photo#8:



Photo#9:

View to North of Facilities Located North of Well.



Photo#10:

View to West of same Facilities which appear to feed across Road East to Compressor Station (Photo #13)



Photo#11

Photo#12:

Retention/ drainage area and Debris West of Facilities



May 12, 2016

Inspection Photos: QuickSilver Alpha State #1-16



Photo#13: View across road to East from Facilities in Photos # 9 & 10; showing Compressor Station, associated Flow lines, Facilities.

Photo#14:

View North at Compressor Station.



Photo#15:

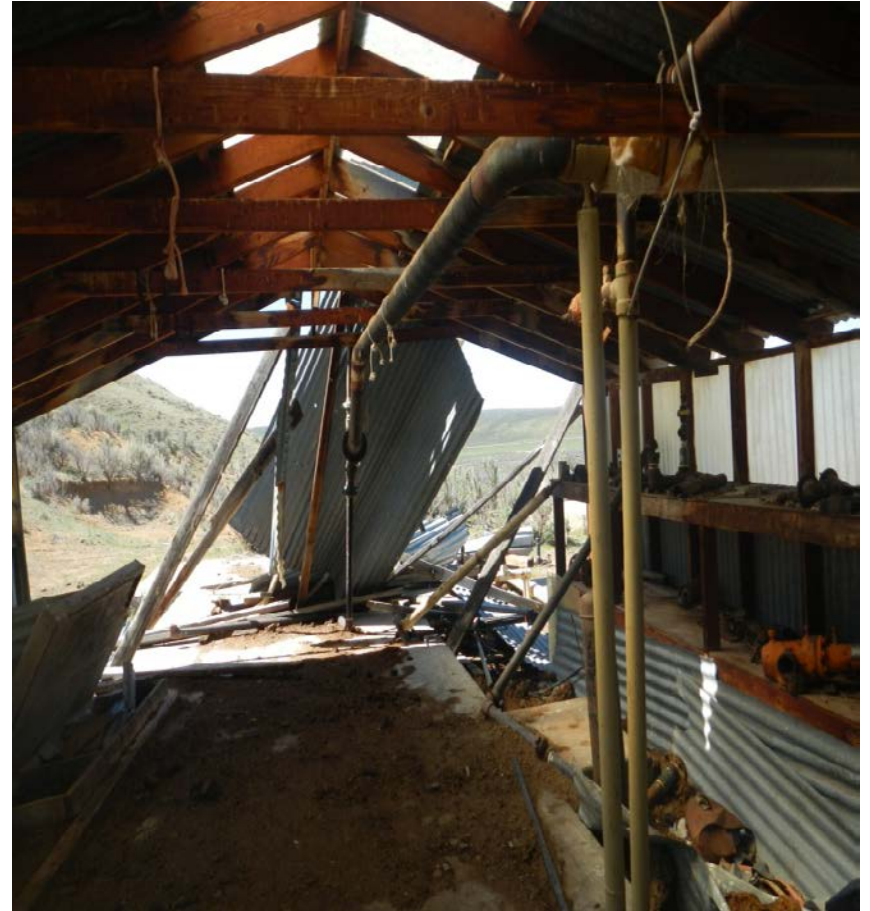
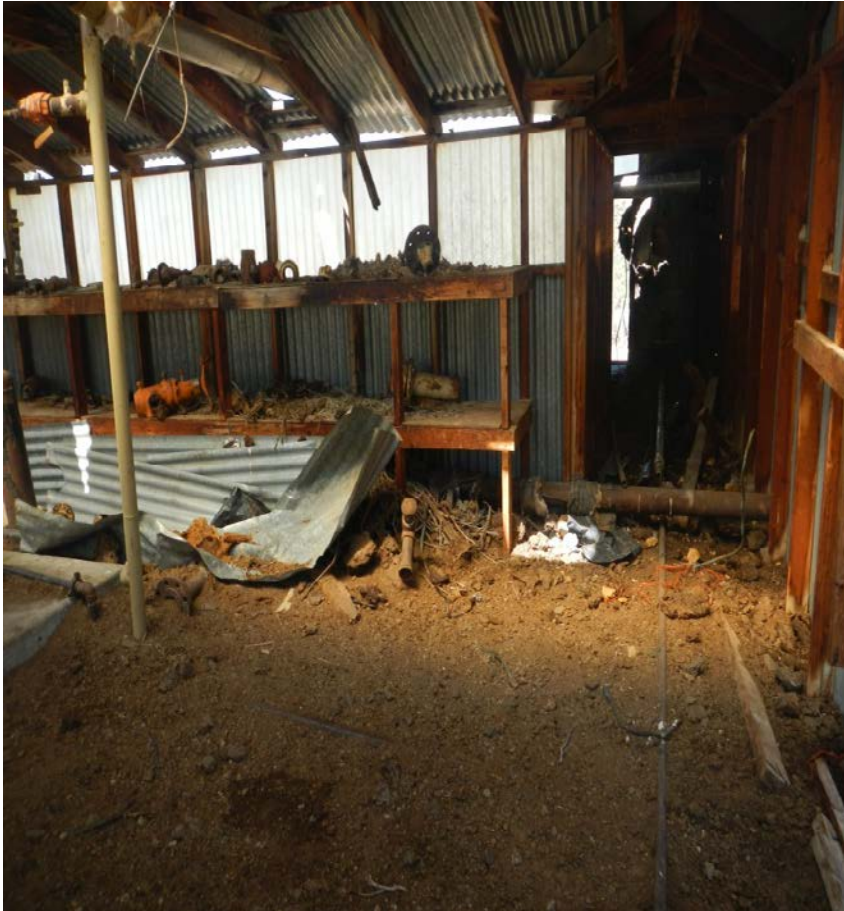
View West at Compressor Station



Photo#16:

Photo#17:

Inside Views of Compressor Station Building



May 12, 2016

Inspection Photos: QuickSilver Alpha State #1-16

Photo#18:
Equipment inside Building



Photo#19:
View from Bldg to West; showing Facilities photo #9 & 10

