

EXTRACTION OIL & GAS

WELD COUNTY, COLORADO (NAD 83)

SW NE SEC. 5 T6N R67W 6th P.M.

MICKEY 10

ORIGINAL WELLBORE

07 October, 2016

Plan: PROPOSAL #2

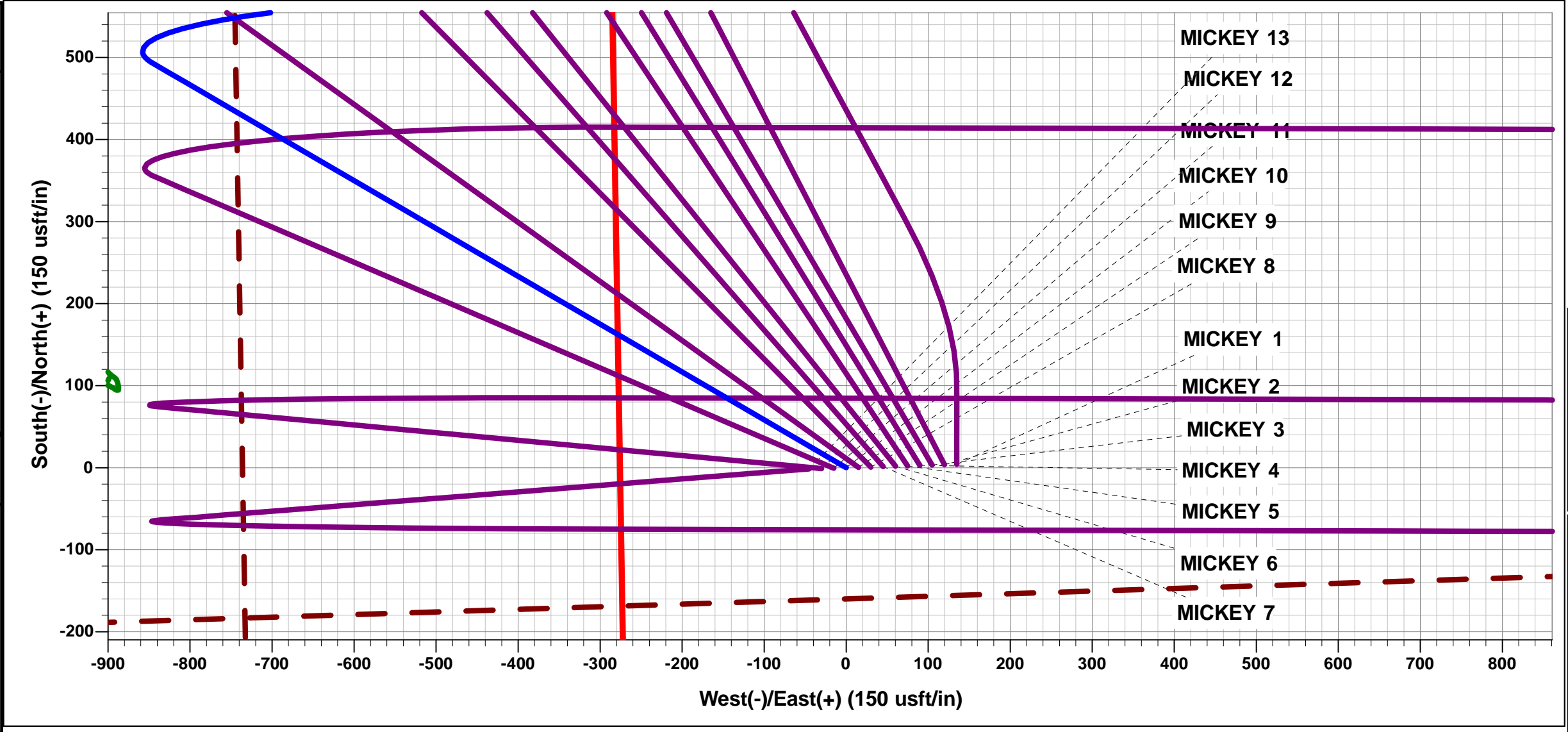




Project: WELD COUNTY, COLORADO (NAD 83)
Site: SW NE SEC. 5 T6N R67W 6th P.M.
Well: MICKEY 10
Wellbore: ORIGINAL WELLBORE
Design: PROPOSAL #2

ANNOTATIONS								
TVD	MD	Inc	Azi	+N/-S	+E/-W	V Sect	Dep	Annotation
0.0	0.0	0.00	0.00	0.0	0.0	0.0	0.0	SHL: 2422ft FNL & 1903ft FEL of Sec 5
1600.0	1600.0	0.00	0.00	0.0	0.0	0.0	0.0	9 5/8" SURFACE CASING
2000.0	2000.0	0.00	0.00	0.0	0.0	0.0	0.0	START NUDGE (2°/100ft BUR)
2675.3	2681.7	13.63	300.25	40.7	-69.7	-67.3	80.7	EOB TO 13.63° INC
6379.3	6493.1	13.63	300.25	493.2	-845.8	-816.7	979.1	KOP (10°/100ft DGLG)
7064.0	7510.7	90.00	90.13	575.3	-284.7	-251.9	1584.7	HZ LP: 1844ft FNL & 2178ft FEL of Sec 5
7064.0	17574.0	90.00	90.14	551.7	9778.5	9794.0	11647.9	BHL: 1931ft FNL & 2620ft FEL of Sec 3

WELLBORE TARGET DETAILS (LAT/LONG)					
Name	TVD	+N/-S	+E/-W	Latitude	Longitude
HZ LP - MICKEY 10	7064.0	575.3	-284.7	40.517972	-104.915711
BHL - MICKEY 10	7064.0	551.7	9778.5	40.517902	-104.879517



FORMATION TOP DETAILS		
TVDPath	MDPath	Formation
3354.0	3380.1	PARKMAN
3954.0	3997.5	SUSSEX
4364.0	4419.4	SHANNON
6709.0	6831.5	SHARON SPRINGS
6744.0	6870.1	NIOBRARA
7014.0	7268.7	FORT HAYS
7054.0	7403.1	CODELL

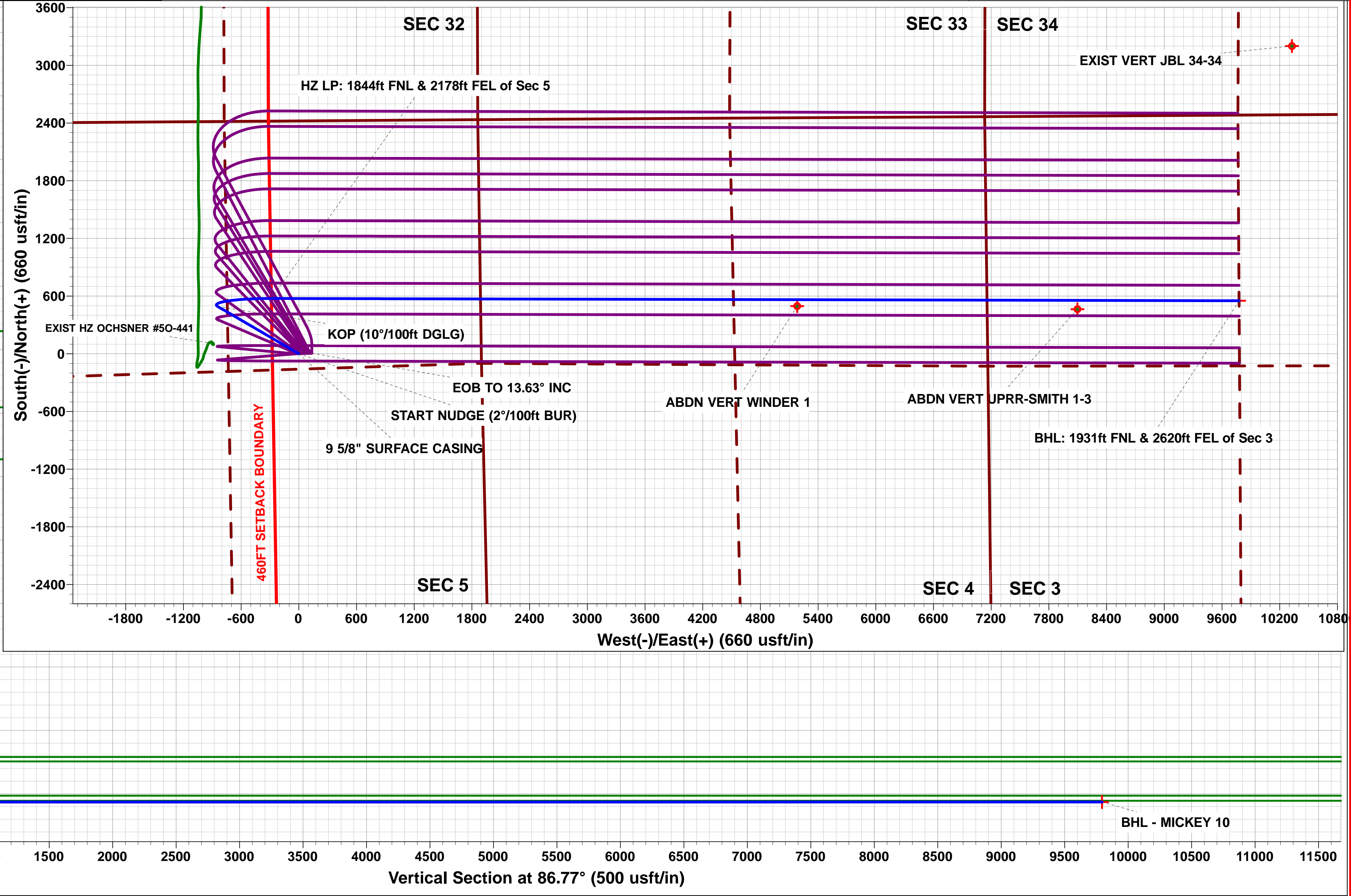
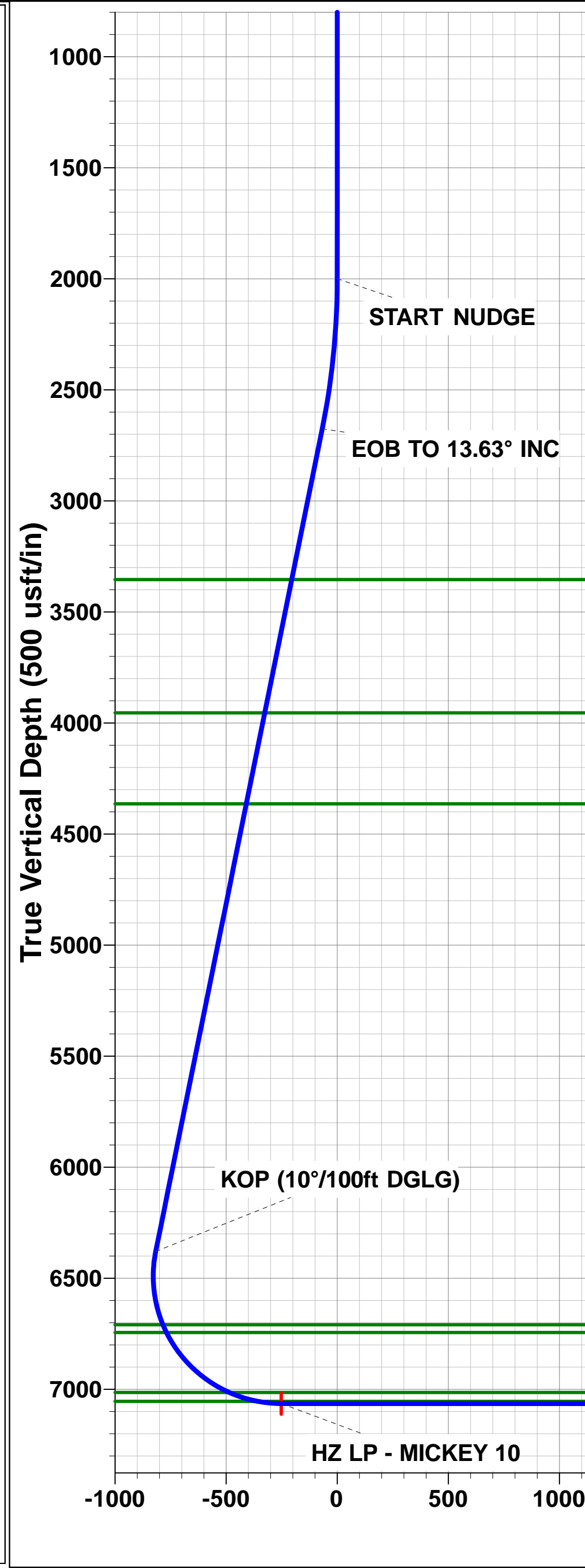
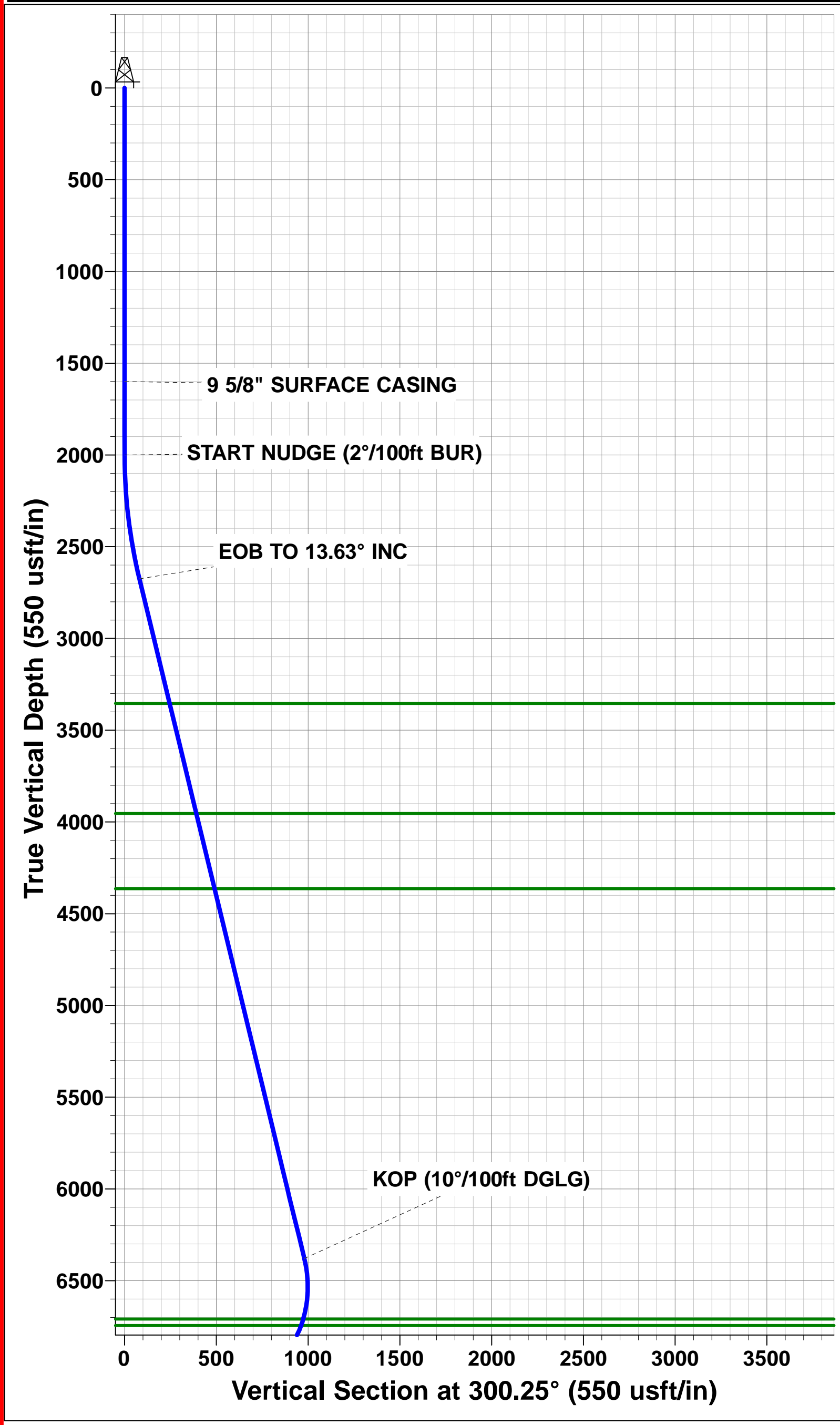
PROPOSED LOCAL COORDINATES	
SHL: 2422ft FNL & 1903ft FEL of Sec 5	
LP: 1844ft FNL & 2178ft FEL of Sec 5	
BHL: 1931ft FNL & 2620ft FEL of Sec 3	

T

M

Azimuths to True North
Magnetic North: 8.39°

Magnetic Field
Strength: 52533.0snT
Dip Angle: 66.95°
Date: 12/08/2016
Model: IGRF2015



Planning Report



Database:	EDM 5000.1 Single User Db	Local Co-ordinate Reference:	Well MICKEY 10
Company:	EXTRACTION OIL & GAS	TVD Reference:	KB-EST @ 4896.0usft
Project:	WELD COUNTY, COLORADO (NAD 83)	MD Reference:	KB-EST @ 4896.0usft
Site:	SW NE SEC. 5 T6N R67W 6th P.M.	North Reference:	True
Well:	MICKEY 10	Survey Calculation Method:	Minimum Curvature
Wellbore:	ORIGINAL WELLBORE		
Design:	PROPOSAL #2		

Project	WELD COUNTY, COLORADO (NAD 83)		
Map System:	US State Plane 1983	System Datum:	Mean Sea Level
Geo Datum:	North American Datum 1983		
Map Zone:	Colorado Northern Zone		Using geodetic scale factor

Site	SW NE SEC. 5 T6N R67W 6th P.M.		
Site Position:		Northing:	1,431,152.83 usft
From:	Lat/Long	Easting:	3,162,171.69 usft
Position Uncertainty:	0.0 usft	Slot Radius:	1.10000ft
		Latitude:	40.515451
		Longitude:	-104.916720
		Grid Convergence:	0.38 °

Well	MICKEY 10		
Well Position	+N/-S	343.1 usft	Northing:
	+E/-W	565.3 usft	Easting:
Position Uncertainty	0.0 usft		Wellhead Elevation:
			Latitude:
			Longitude:
			Ground Level:

Wellbore	ORIGINAL WELLBORE				
Magnetics	Model Name	Sample Date	Declination (°)	Dip Angle (°)	Field Strength (nT)
	IGRF2015	12/08/2016	8.39	66.95	52,533

Design	PROPOSAL #2			
Audit Notes:				
Version:	Phase:	PROTOTYPE	Tie On Depth:	0.0
Vertical Section:	Depth From (TVD) (usft)	+N/-S (usft)	+E/-W (usft)	Direction (°)
	4.0	0.0	0.0	86.77

Plan Sections											
MD (usft)	Inc (°)	Azi (°)	Vertical Depth	SS (usft)	+N/-S (usft)	+E/-W (usft)	Dogleg Rate (°/100usf)	Build Rate (°/100usf)	Turn Rate (°/100usf)	TFO (°)	Target
0.0	0.00	0.00	0.0	-4,896.0	0.0	0.0	0.00	0.00	0.00	0.00	
2,000.0	0.00	0.00	2,000.0	-2,896.0	0.0	0.0	0.00	0.00	0.00	0.00	
2,681.7	13.63	300.25	2,675.3	-2,220.7	40.7	-69.7	2.00	2.00	0.00	300.25	
6,493.1	13.63	300.25	6,379.3	1,483.3	493.2	-845.8	0.00	0.00	0.00	0.00	
7,510.7	90.00	90.13	7,064.0	2,168.0	575.3	-284.7	10.00	7.50	14.73	149.17	HZ LP - MICKEY 10
17,574.0	90.00	90.14	7,064.0	2,168.0	551.7	9,778.5	0.00	0.00	0.00	90.00	BHL - MICKEY 10

Database:	EDM 5000.1 Single User Db	Local Co-ordinate Reference:	Well MICKEY 10
Company:	EXTRACTION OIL & GAS	TVD Reference:	KB-EST @ 4896.0usft
Project:	WELD COUNTY, COLORADO (NAD 83)	MD Reference:	KB-EST @ 4896.0usft
Site:	SW NE SEC. 5 T6N R67W 6th P.M.	North Reference:	True
Well:	MICKEY 10	Survey Calculation Method:	Minimum Curvature
Wellbore:	ORIGINAL WELLBORE		
Design:	PROPOSAL #2		

Planned Survey

MD (usft)	Inc (°)	Azi (°)	TVD (usft)	SS (usft)	+N/-S (usft)	+E/-W (usft)	Vertical Section (usft)	Dogleg Rate (°/100usft)	Build Rate (°/100usft)	Turn Rate (°/100usft)
SHL: 2422ft FNL & 1903ft FEL of Sec 5										
0.0	0.00	0.00	0.0	4,896.00	0.0	0.0	0.0	0.00	0.00	0.00
100.0	0.00	0.00	100.0	4,796.00	0.0	0.0	0.0	0.00	0.00	0.00
200.0	0.00	0.00	200.0	4,696.00	0.0	0.0	0.0	0.00	0.00	0.00
300.0	0.00	0.00	300.0	4,596.00	0.0	0.0	0.0	0.00	0.00	0.00
400.0	0.00	0.00	400.0	4,496.00	0.0	0.0	0.0	0.00	0.00	0.00
500.0	0.00	0.00	500.0	4,396.00	0.0	0.0	0.0	0.00	0.00	0.00
600.0	0.00	0.00	600.0	4,296.00	0.0	0.0	0.0	0.00	0.00	0.00
700.0	0.00	0.00	700.0	4,196.00	0.0	0.0	0.0	0.00	0.00	0.00
800.0	0.00	0.00	800.0	4,096.00	0.0	0.0	0.0	0.00	0.00	0.00
900.0	0.00	0.00	900.0	3,996.00	0.0	0.0	0.0	0.00	0.00	0.00
1,000.0	0.00	0.00	1,000.0	3,896.00	0.0	0.0	0.0	0.00	0.00	0.00
1,100.0	0.00	0.00	1,100.0	3,796.00	0.0	0.0	0.0	0.00	0.00	0.00
1,200.0	0.00	0.00	1,200.0	3,696.00	0.0	0.0	0.0	0.00	0.00	0.00
1,300.0	0.00	0.00	1,300.0	3,596.00	0.0	0.0	0.0	0.00	0.00	0.00
1,400.0	0.00	0.00	1,400.0	3,496.00	0.0	0.0	0.0	0.00	0.00	0.00
1,500.0	0.00	0.00	1,500.0	3,396.00	0.0	0.0	0.0	0.00	0.00	0.00
9 5/8" SURFACE CASING										
1,600.0	0.00	0.00	1,600.0	3,296.00	0.0	0.0	0.0	0.00	0.00	0.00
1,700.0	0.00	0.00	1,700.0	3,196.00	0.0	0.0	0.0	0.00	0.00	0.00
1,800.0	0.00	0.00	1,800.0	3,096.00	0.0	0.0	0.0	0.00	0.00	0.00
1,900.0	0.00	0.00	1,900.0	2,996.00	0.0	0.0	0.0	0.00	0.00	0.00
START NUDGE (2°/100ft BUR)										
2,000.0	0.00	0.00	2,000.0	2,896.00	0.0	0.0	0.0	0.00	0.00	0.00
2,100.0	2.00	300.25	2,100.0	2,796.02	0.9	-1.5	-1.5	2.00	2.00	0.00
2,200.0	4.00	300.25	2,199.8	2,696.16	3.5	-6.0	-5.8	2.00	2.00	0.00
2,300.0	6.00	300.25	2,299.5	2,596.55	7.9	-13.6	-13.1	2.00	2.00	0.00
2,400.0	8.00	300.25	2,398.7	2,497.30	14.0	-24.1	-23.3	2.00	2.00	0.00
2,500.0	10.00	300.25	2,497.5	2,398.53	21.9	-37.6	-36.3	2.00	2.00	0.00
2,600.0	12.00	300.25	2,595.6	2,300.38	31.5	-54.1	-52.2	2.00	2.00	0.00
EOB TO 13.63° INC										
2,681.7	13.63	300.25	2,675.3	2,220.72	40.7	-69.7	-67.3	2.00	2.00	0.00
2,700.0	13.63	300.25	2,693.1	2,202.93	42.8	-73.5	-70.9	0.00	0.00	0.00
2,800.0	13.63	300.25	2,790.3	2,105.75	54.7	-93.8	-90.6	0.00	0.00	0.00
2,900.0	13.63	300.25	2,887.4	2,008.57	66.6	-114.2	-110.3	0.00	0.00	0.00
3,000.0	13.63	300.25	2,984.6	1,911.38	78.5	-134.5	-129.9	0.00	0.00	0.00
3,100.0	13.63	300.25	3,081.8	1,814.20	90.3	-154.9	-149.6	0.00	0.00	0.00
3,200.0	13.63	300.25	3,179.0	1,717.02	102.2	-175.3	-169.2	0.00	0.00	0.00
3,300.0	13.63	300.25	3,276.2	1,619.84	114.1	-195.6	-188.9	0.00	0.00	0.00
PARKMAN										
3,380.1	13.63	300.25	3,354.0	1,542.00	123.6	-211.9	-204.6	0.00	0.00	0.00
3,400.0	13.63	300.25	3,373.3	1,522.66	126.0	-216.0	-208.6	0.00	0.00	0.00
3,500.0	13.63	300.25	3,470.5	1,425.47	137.8	-236.4	-228.2	0.00	0.00	0.00
3,600.0	13.63	300.25	3,567.7	1,328.29	149.7	-256.7	-247.9	0.00	0.00	0.00
3,700.0	13.63	300.25	3,664.9	1,231.11	161.6	-277.1	-267.5	0.00	0.00	0.00
3,800.0	13.63	300.25	3,762.1	1,133.93	173.5	-297.4	-287.2	0.00	0.00	0.00
3,900.0	13.63	300.25	3,859.3	1,036.74	185.3	-317.8	-306.9	0.00	0.00	0.00
SUSSEX										
3,997.5	13.63	300.25	3,954.0	942.00	196.9	-337.7	-326.0	0.00	0.00	0.00
4,000.0	13.63	300.25	3,956.4	939.56	197.2	-338.2	-326.5	0.00	0.00	0.00
4,100.0	13.63	300.25	4,053.6	842.38	209.1	-358.5	-346.2	0.00	0.00	0.00
4,200.0	13.63	300.25	4,150.8	745.20	221.0	-378.9	-365.8	0.00	0.00	0.00
4,300.0	13.63	300.25	4,248.0	648.02	232.8	-399.3	-385.5	0.00	0.00	0.00

Database:	EDM 5000.1 Single User Db	Local Co-ordinate Reference:	Well MICKEY 10
Company:	EXTRACTION OIL & GAS	TVD Reference:	KB-EST @ 4896.0usft
Project:	WELD COUNTY, COLORADO (NAD 83)	MD Reference:	KB-EST @ 4896.0usft
Site:	SW NE SEC. 5 T6N R67W 6th P.M.	North Reference:	True
Well:	MICKEY 10	Survey Calculation Method:	Minimum Curvature
Wellbore:	ORIGINAL WELLBORE		
Design:	PROPOSAL #2		

Planned Survey

MD (usft)	Inc (°)	Azi (°)	TVD (usft)	SS (usft)	+N/-S (usft)	+E/-W (usft)	Vertical Section (usft)	Dogleg Rate (°/100usft)	Build Rate (°/100usft)	Turn Rate (°/100usft)
4,400.0	13.63	300.25	4,345.2	550.83	244.7	-419.6	-405.2	0.00	0.00	0.00
SHANNON										
4,419.4	13.63	300.25	4,364.0	532.00	247.0	-423.6	-409.0	0.00	0.00	0.00
4,500.0	13.63	300.25	4,442.3	453.65	256.6	-440.0	-424.8	0.00	0.00	0.00
4,600.0	13.63	300.25	4,539.5	356.47	268.5	-460.3	-444.5	0.00	0.00	0.00
4,700.0	13.63	300.25	4,636.7	259.29	280.3	-480.7	-464.2	0.00	0.00	0.00
4,800.0	13.63	300.25	4,733.9	162.11	292.2	-501.1	-483.8	0.00	0.00	0.00
4,900.0	13.63	300.25	4,831.1	64.92	304.1	-521.4	-503.5	0.00	0.00	0.00
5,000.0	13.63	300.25	4,928.3	-32.26	315.9	-541.8	-523.1	0.00	0.00	0.00
5,100.0	13.63	300.25	5,025.4	-129.44	327.8	-562.2	-542.8	0.00	0.00	0.00
5,200.0	13.63	300.25	5,122.6	-226.62	339.7	-582.5	-562.5	0.00	0.00	0.00
5,300.0	13.63	300.25	5,219.8	-323.81	351.6	-602.9	-582.1	0.00	0.00	0.00
5,400.0	13.63	300.25	5,317.0	-420.99	363.4	-623.2	-601.8	0.00	0.00	0.00
5,500.0	13.63	300.25	5,414.2	-518.17	375.3	-643.6	-621.4	0.00	0.00	0.00
5,600.0	13.63	300.25	5,511.4	-615.35	387.2	-664.0	-641.1	0.00	0.00	0.00
5,700.0	13.63	300.25	5,608.5	-712.53	399.1	-684.3	-660.8	0.00	0.00	0.00
5,800.0	13.63	300.25	5,705.7	-809.72	410.9	-704.7	-680.4	0.00	0.00	0.00
5,900.0	13.63	300.25	5,802.9	-906.90	422.8	-725.1	-700.1	0.00	0.00	0.00
6,000.0	13.63	300.25	5,900.1	-1,004.08	434.7	-745.4	-719.7	0.00	0.00	0.00
6,100.0	13.63	300.25	5,997.3	-1,101.26	446.6	-765.8	-739.4	0.00	0.00	0.00
6,200.0	13.63	300.25	6,094.4	-1,198.45	458.4	-786.1	-759.1	0.00	0.00	0.00
6,300.0	13.63	300.25	6,191.6	-1,295.63	470.3	-806.5	-778.7	0.00	0.00	0.00
6,400.0	13.63	300.25	6,288.8	-1,392.81	482.2	-826.9	-798.4	0.00	0.00	0.00
KOP (10°/100ft DGLG)										
6,493.1	13.63	300.25	6,379.3	-1,483.29	493.2	-845.8	-816.7	0.00	0.00	0.00
6,500.0	13.04	301.82	6,386.0	-1,490.00	494.1	-847.2	-818.0	10.03	-8.54	22.77
6,600.0	7.02	351.32	6,484.6	-1,588.59	506.1	-857.7	-827.9	10.00	-6.02	49.50
6,700.0	11.29	52.57	6,583.5	-1,687.49	518.1	-850.9	-820.3	10.00	4.27	61.25
6,800.0	20.11	70.73	6,679.7	-1,783.72	529.8	-826.8	-795.6	10.00	8.83	18.16
SHARON SPRINGS										
6,831.5	23.09	73.55	6,709.0	-1,813.00	533.3	-815.8	-784.4	10.00	9.44	8.96
NIORARA										
6,870.1	26.79	76.18	6,744.0	-1,848.00	537.5	-800.0	-768.5	10.00	9.58	6.83
6,900.0	29.68	77.80	6,770.3	-1,874.34	540.7	-786.3	-754.6	10.00	9.67	5.41
7,000.0	39.44	81.63	6,852.6	-1,956.61	550.6	-730.5	-698.3	10.00	9.77	3.82
7,100.0	49.29	84.12	6,924.0	-2,028.01	559.1	-661.2	-628.6	10.00	9.85	2.50
7,200.0	59.18	85.97	6,982.4	-2,086.39	566.0	-580.5	-547.6	10.00	9.89	1.85
FORT HAYS										
7,268.7	65.98	87.02	7,014.0	-2,118.00	569.7	-519.6	-486.7	10.00	9.91	1.54
7,300.0	69.09	87.47	7,026.0	-2,129.96	571.1	-490.7	-457.8	10.00	9.91	1.42
7,400.0	79.01	88.78	7,053.4	-2,157.41	574.2	-394.8	-361.8	10.00	9.92	1.31
CODELL										
7,403.1	79.32	88.82	7,054.0	-2,158.00	574.3	-391.7	-358.7	10.00	9.92	1.25
7,500.0	88.93	90.00	7,063.9	-2,167.90	575.3	-295.4	-262.6	10.00	9.93	1.22
HZ LP: 1844ft FNL & 2178ft FEL of Sec 5										
7,510.7	90.00	90.13	7,064.0	-2,168.00	575.3	-284.7	-251.9	10.00	9.93	1.21
7,600.0	90.00	90.13	7,064.0	-2,168.00	575.1	-195.4	-162.7	0.00	0.00	0.00
7,700.0	90.00	90.13	7,064.0	-2,168.00	574.8	-95.4	-62.9	0.00	0.00	0.00
7,800.0	90.00	90.13	7,064.0	-2,168.00	574.6	4.6	36.9	0.00	0.00	0.00
7,900.0	90.00	90.13	7,064.0	-2,168.00	574.4	104.6	136.7	0.00	0.00	0.00
8,000.0	90.00	90.13	7,064.0	-2,168.00	574.1	204.6	236.6	0.00	0.00	0.00
8,100.0	90.00	90.13	7,064.0	-2,168.00	573.9	304.6	336.4	0.00	0.00	0.00
8,200.0	90.00	90.13	7,064.0	-2,168.00	573.7	404.6	436.2	0.00	0.00	0.00

Planning Report



Database:	EDM 5000.1 Single User Db	Local Co-ordinate Reference:	Well MICKEY 10
Company:	EXTRACTION OIL & GAS	TVD Reference:	KB-EST @ 4896.0usft
Project:	WELD COUNTY, COLORADO (NAD 83)	MD Reference:	KB-EST @ 4896.0usft
Site:	SW NE SEC. 5 T6N R67W 6th P.M.	North Reference:	True
Well:	MICKEY 10	Survey Calculation Method:	Minimum Curvature
Wellbore:	ORIGINAL WELLBORE		
Design:	PROPOSAL #2		

Planned Survey										
MD (usft)	Inc (°)	Azi (°)	TVD (usft)	SS (usft)	+N/-S (usft)	+E/-W (usft)	Vertical Section (usft)	Dogleg Rate (°/100usft)	Build Rate (°/100usft)	Turn Rate (°/100usft)
8,300.0	90.00	90.13	7,064.0	-2,168.00	573.4	504.6	536.1	0.00	0.00	0.00
8,400.0	90.00	90.13	7,064.0	-2,168.00	573.2	604.6	635.9	0.00	0.00	0.00
8,500.0	90.00	90.13	7,064.0	-2,168.00	573.0	704.6	735.7	0.00	0.00	0.00
8,600.0	90.00	90.13	7,064.0	-2,168.00	572.7	804.6	835.5	0.00	0.00	0.00
8,700.0	90.00	90.13	7,064.0	-2,168.00	572.5	904.6	935.4	0.00	0.00	0.00
8,800.0	90.00	90.13	7,064.0	-2,168.00	572.3	1,004.6	1,035.2	0.00	0.00	0.00
8,900.0	90.00	90.13	7,064.0	-2,168.00	572.0	1,104.6	1,135.0	0.00	0.00	0.00
9,000.0	90.00	90.13	7,064.0	-2,168.00	571.8	1,204.6	1,234.9	0.00	0.00	0.00
9,100.0	90.00	90.13	7,064.0	-2,168.00	571.6	1,304.6	1,334.7	0.00	0.00	0.00
9,200.0	90.00	90.13	7,064.0	-2,168.00	571.3	1,404.6	1,434.5	0.00	0.00	0.00
9,300.0	90.00	90.13	7,064.0	-2,168.00	571.1	1,504.6	1,534.3	0.00	0.00	0.00
9,400.0	90.00	90.13	7,064.0	-2,168.00	570.9	1,604.6	1,634.2	0.00	0.00	0.00
9,500.0	90.00	90.13	7,064.0	-2,168.00	570.6	1,704.6	1,734.0	0.00	0.00	0.00
9,600.0	90.00	90.13	7,064.0	-2,168.00	570.4	1,804.6	1,833.8	0.00	0.00	0.00
9,700.0	90.00	90.13	7,064.0	-2,168.00	570.2	1,904.6	1,933.6	0.00	0.00	0.00
9,800.0	90.00	90.13	7,064.0	-2,168.00	569.9	2,004.6	2,033.5	0.00	0.00	0.00
9,900.0	90.00	90.13	7,064.0	-2,168.00	569.7	2,104.6	2,133.3	0.00	0.00	0.00
10,000.0	90.00	90.13	7,064.0	-2,168.00	569.5	2,204.6	2,233.1	0.00	0.00	0.00
10,100.0	90.00	90.13	7,064.0	-2,168.00	569.2	2,304.6	2,333.0	0.00	0.00	0.00
10,200.0	90.00	90.13	7,064.0	-2,168.00	569.0	2,404.6	2,432.8	0.00	0.00	0.00
10,300.0	90.00	90.13	7,064.0	-2,168.00	568.8	2,504.6	2,532.6	0.00	0.00	0.00
10,400.0	90.00	90.13	7,064.0	-2,168.00	568.5	2,604.6	2,632.4	0.00	0.00	0.00
10,500.0	90.00	90.13	7,064.0	-2,168.00	568.3	2,704.6	2,732.3	0.00	0.00	0.00
10,600.0	90.00	90.13	7,064.0	-2,168.00	568.1	2,804.6	2,832.1	0.00	0.00	0.00
10,700.0	90.00	90.13	7,064.0	-2,168.00	567.8	2,904.6	2,931.9	0.00	0.00	0.00
10,800.0	90.00	90.13	7,064.0	-2,168.00	567.6	3,004.6	3,031.8	0.00	0.00	0.00
10,900.0	90.00	90.13	7,064.0	-2,168.00	567.4	3,104.6	3,131.6	0.00	0.00	0.00
11,000.0	90.00	90.13	7,064.0	-2,168.00	567.1	3,204.6	3,231.4	0.00	0.00	0.00
11,100.0	90.00	90.13	7,064.0	-2,168.00	566.9	3,304.6	3,331.2	0.00	0.00	0.00
11,200.0	90.00	90.13	7,064.0	-2,168.00	566.7	3,404.5	3,431.1	0.00	0.00	0.00
11,300.0	90.00	90.13	7,064.0	-2,168.00	566.4	3,504.5	3,530.9	0.00	0.00	0.00
11,400.0	90.00	90.13	7,064.0	-2,168.00	566.2	3,604.5	3,630.7	0.00	0.00	0.00
11,500.0	90.00	90.13	7,064.0	-2,168.00	566.0	3,704.5	3,730.5	0.00	0.00	0.00
11,600.0	90.00	90.13	7,064.0	-2,168.00	565.7	3,804.5	3,830.4	0.00	0.00	0.00
11,700.0	90.00	90.13	7,064.0	-2,168.00	565.5	3,904.5	3,930.2	0.00	0.00	0.00
11,800.0	90.00	90.13	7,064.0	-2,168.00	565.3	4,004.5	4,030.0	0.00	0.00	0.00
11,900.0	90.00	90.13	7,064.0	-2,168.00	565.0	4,104.5	4,129.9	0.00	0.00	0.00
12,000.0	90.00	90.13	7,064.0	-2,168.00	564.8	4,204.5	4,229.7	0.00	0.00	0.00
12,100.0	90.00	90.13	7,064.0	-2,168.00	564.6	4,304.5	4,329.5	0.00	0.00	0.00
12,200.0	90.00	90.13	7,064.0	-2,168.00	564.3	4,404.5	4,429.3	0.00	0.00	0.00
12,300.0	90.00	90.13	7,064.0	-2,168.00	564.1	4,504.5	4,529.2	0.00	0.00	0.00
12,400.0	90.00	90.13	7,064.0	-2,168.00	563.9	4,604.5	4,629.0	0.00	0.00	0.00
12,500.0	90.00	90.13	7,064.0	-2,168.00	563.6	4,704.5	4,728.8	0.00	0.00	0.00
12,600.0	90.00	90.13	7,064.0	-2,168.00	563.4	4,804.5	4,828.7	0.00	0.00	0.00
12,700.0	90.00	90.13	7,064.0	-2,168.00	563.2	4,904.5	4,928.5	0.00	0.00	0.00
12,800.0	90.00	90.13	7,064.0	-2,168.00	562.9	5,004.5	5,028.3	0.00	0.00	0.00
12,900.0	90.00	90.13	7,064.0	-2,168.00	562.7	5,104.5	5,128.1	0.00	0.00	0.00
13,000.0	90.00	90.13	7,064.0	-2,168.00	562.5	5,204.5	5,228.0	0.00	0.00	0.00
13,100.0	90.00	90.13	7,064.0	-2,168.00	562.2	5,304.5	5,327.8	0.00	0.00	0.00
13,200.0	90.00	90.13	7,064.0	-2,168.00	562.0	5,404.5	5,427.6	0.00	0.00	0.00
13,300.0	90.00	90.13	7,064.0	-2,168.00	561.8	5,504.5	5,527.4	0.00	0.00	0.00
13,400.0	90.00	90.13	7,064.0	-2,168.00	561.5	5,604.5	5,627.3	0.00	0.00	0.00
13,500.0	90.00	90.13	7,064.0	-2,168.00	561.3	5,704.5	5,727.1	0.00	0.00	0.00
13,600.0	90.00	90.13	7,064.0	-2,168.00	561.0	5,804.5	5,826.9	0.00	0.00	0.00

Planning Report



Database:	EDM 5000.1 Single User Db	Local Co-ordinate Reference:	Well MICKEY 10
Company:	EXTRACTION OIL & GAS	TVD Reference:	KB-EST @ 4896.0usft
Project:	WELD COUNTY, COLORADO (NAD 83)	MD Reference:	KB-EST @ 4896.0usft
Site:	SW NE SEC. 5 T6N R67W 6th P.M.	North Reference:	True
Well:	MICKEY 10	Survey Calculation Method:	Minimum Curvature
Wellbore:	ORIGINAL WELLBORE		
Design:	PROPOSAL #2		

Planned Survey										
MD (usft)	Inc (°)	Azi (°)	TVD (usft)	SS (usft)	+N/-S (usft)	+E/-W (usft)	Vertical Section (usft)	Dogleg Rate (°/100usft)	Build Rate (°/100usft)	Turn Rate (°/100usft)
13,700.0	90.00	90.13	7,064.0	-2,168.00	560.8	5,904.5	5,926.8	0.00	0.00	0.00
13,800.0	90.00	90.13	7,064.0	-2,168.00	560.6	6,004.5	6,026.6	0.00	0.00	0.00
13,900.0	90.00	90.13	7,064.0	-2,168.00	560.3	6,104.5	6,126.4	0.00	0.00	0.00
14,000.0	90.00	90.13	7,064.0	-2,168.00	560.1	6,204.5	6,226.2	0.00	0.00	0.00
14,100.0	90.00	90.13	7,064.0	-2,168.00	559.9	6,304.5	6,326.1	0.00	0.00	0.00
14,200.0	90.00	90.13	7,064.0	-2,168.00	559.6	6,404.5	6,425.9	0.00	0.00	0.00
14,300.0	90.00	90.13	7,064.0	-2,168.00	559.4	6,504.5	6,525.7	0.00	0.00	0.00
14,400.0	90.00	90.13	7,064.0	-2,168.00	559.2	6,604.5	6,625.6	0.00	0.00	0.00
14,500.0	90.00	90.13	7,064.0	-2,168.00	558.9	6,704.5	6,725.4	0.00	0.00	0.00
14,600.0	90.00	90.13	7,064.0	-2,168.00	558.7	6,804.5	6,825.2	0.00	0.00	0.00
14,700.0	90.00	90.13	7,064.0	-2,168.00	558.5	6,904.5	6,925.0	0.00	0.00	0.00
14,800.0	90.00	90.13	7,064.0	-2,168.00	558.2	7,004.5	7,024.9	0.00	0.00	0.00
14,900.0	90.00	90.13	7,064.0	-2,168.00	558.0	7,104.5	7,124.7	0.00	0.00	0.00
15,000.0	90.00	90.13	7,064.0	-2,168.00	557.8	7,204.5	7,224.5	0.00	0.00	0.00
15,100.0	90.00	90.13	7,064.0	-2,168.00	557.5	7,304.5	7,324.3	0.00	0.00	0.00
15,200.0	90.00	90.13	7,064.0	-2,168.00	557.3	7,404.5	7,424.2	0.00	0.00	0.00
15,300.0	90.00	90.13	7,064.0	-2,168.00	557.1	7,504.5	7,524.0	0.00	0.00	0.00
15,400.0	90.00	90.13	7,064.0	-2,168.00	556.8	7,604.5	7,623.8	0.00	0.00	0.00
15,500.0	90.00	90.13	7,064.0	-2,168.00	556.6	7,704.5	7,723.7	0.00	0.00	0.00
15,600.0	90.00	90.13	7,064.0	-2,168.00	556.4	7,804.5	7,823.5	0.00	0.00	0.00
15,700.0	90.00	90.13	7,064.0	-2,168.00	556.1	7,904.5	7,923.3	0.00	0.00	0.00
15,800.0	90.00	90.13	7,064.0	-2,168.00	555.9	8,004.5	8,023.1	0.00	0.00	0.00
15,900.0	90.00	90.13	7,064.0	-2,168.00	555.6	8,104.5	8,123.0	0.00	0.00	0.00
16,000.0	90.00	90.13	7,064.0	-2,168.00	555.4	8,204.5	8,222.8	0.00	0.00	0.00
16,100.0	90.00	90.13	7,064.0	-2,168.00	555.2	8,304.5	8,322.6	0.00	0.00	0.00
16,200.0	90.00	90.13	7,064.0	-2,168.00	554.9	8,404.5	8,422.5	0.00	0.00	0.00
16,300.0	90.00	90.13	7,064.0	-2,168.00	554.7	8,504.5	8,522.3	0.00	0.00	0.00
16,400.0	90.00	90.13	7,064.0	-2,168.00	554.5	8,604.5	8,622.1	0.00	0.00	0.00
16,500.0	90.00	90.13	7,064.0	-2,168.00	554.2	8,704.5	8,721.9	0.00	0.00	0.00
16,600.0	90.00	90.13	7,064.0	-2,168.00	554.0	8,804.5	8,821.8	0.00	0.00	0.00
16,700.0	90.00	90.13	7,064.0	-2,168.00	553.8	8,904.5	8,921.6	0.00	0.00	0.00
16,800.0	90.00	90.13	7,064.0	-2,168.00	553.5	9,004.5	9,021.4	0.00	0.00	0.00
16,900.0	90.00	90.13	7,064.0	-2,168.00	553.3	9,104.5	9,121.2	0.00	0.00	0.00
17,000.0	90.00	90.13	7,064.0	-2,168.00	553.1	9,204.5	9,221.1	0.00	0.00	0.00
17,100.0	90.00	90.13	7,064.0	-2,168.00	552.8	9,304.5	9,320.9	0.00	0.00	0.00
17,200.0	90.00	90.13	7,064.0	-2,168.00	552.6	9,404.5	9,420.7	0.00	0.00	0.00
17,300.0	90.00	90.14	7,064.0	-2,168.00	552.4	9,504.5	9,520.6	0.00	0.00	0.00
17,400.0	90.00	90.14	7,064.0	-2,168.00	552.1	9,604.5	9,620.4	0.00	0.00	0.00
17,500.0	90.00	90.14	7,064.0	-2,168.00	551.9	9,704.5	9,720.2	0.00	0.00	0.00
BHL: 1931ft FNL & 2620ft FEL of Sec 3										
17,574.0	90.00	90.14	7,064.0	-2,168.00	551.7	9,778.5	9,794.0	0.00	0.00	0.00

Database:	EDM 5000.1 Single User Db	Local Co-ordinate Reference:	Well MICKEY 10
Company:	EXTRACTION OIL & GAS	TVD Reference:	KB-EST @ 4896.0usft
Project:	WELD COUNTY, COLORADO (NAD 83)	MD Reference:	KB-EST @ 4896.0usft
Site:	SW NE SEC. 5 T6N R67W 6th P.M.	North Reference:	True
Well:	MICKEY 10	Survey Calculation Method:	Minimum Curvature
Wellbore:	ORIGINAL WELLBORE		
Design:	PROPOSAL #2		

Formations						
MD (usft)	TVD (usft)	Name	Lithology	Dip (°)	Dip Direction (°)	
3,380.1	3,354.0	PARKMAN				
3,997.5	3,954.0	SUSSEX				
4,419.4	4,364.0	SHANNON				
6,831.5	6,709.0	SHARON SPRINGS				
6,870.1	6,744.0	NIOBRARA				
7,268.7	7,014.0	FORT HAYS				
7,403.1	7,054.0	CODELL				

Plan Annotations				
MD (usft)	TVD (usft)	Local Coordinates		Comment
		+N/-S (usft)	+E/-W (usft)	
0.0	0.0	0.0	0.0	SHL: 2422ft FNL & 1903ft FEL of Sec 5
1,600.0	1,600.0	0.0	0.0	9 5/8" SURFACE CASING
2,000.0	2,000.0	0.0	0.0	START NUDGE (2°/100ft BUR)
2,681.7	2,675.3	40.7	-69.7	EOB TO 13.63° INC
6,493.1	6,379.3	493.2	-845.8	KOP (10°/100ft DGLG)
7,510.7	7,064.0	575.3	-284.7	HZ LP: 1844ft FNL & 2178ft FEL of Sec 5
17,574.0	7,064.0	551.7	9,778.5	BHL: 1931ft FNL & 2620ft FEL of Sec 3