

# **EXTRACTION OIL & GAS**

**WELD COUNTY, COLORADO (NAD 83)**

**SW NE SEC. 5 T6N R67W 6th P.M.**

**MICKEY 7**

**ORIGINAL WELLBORE**

**07 October, 2016**

**Plan: PROPOSAL #2**

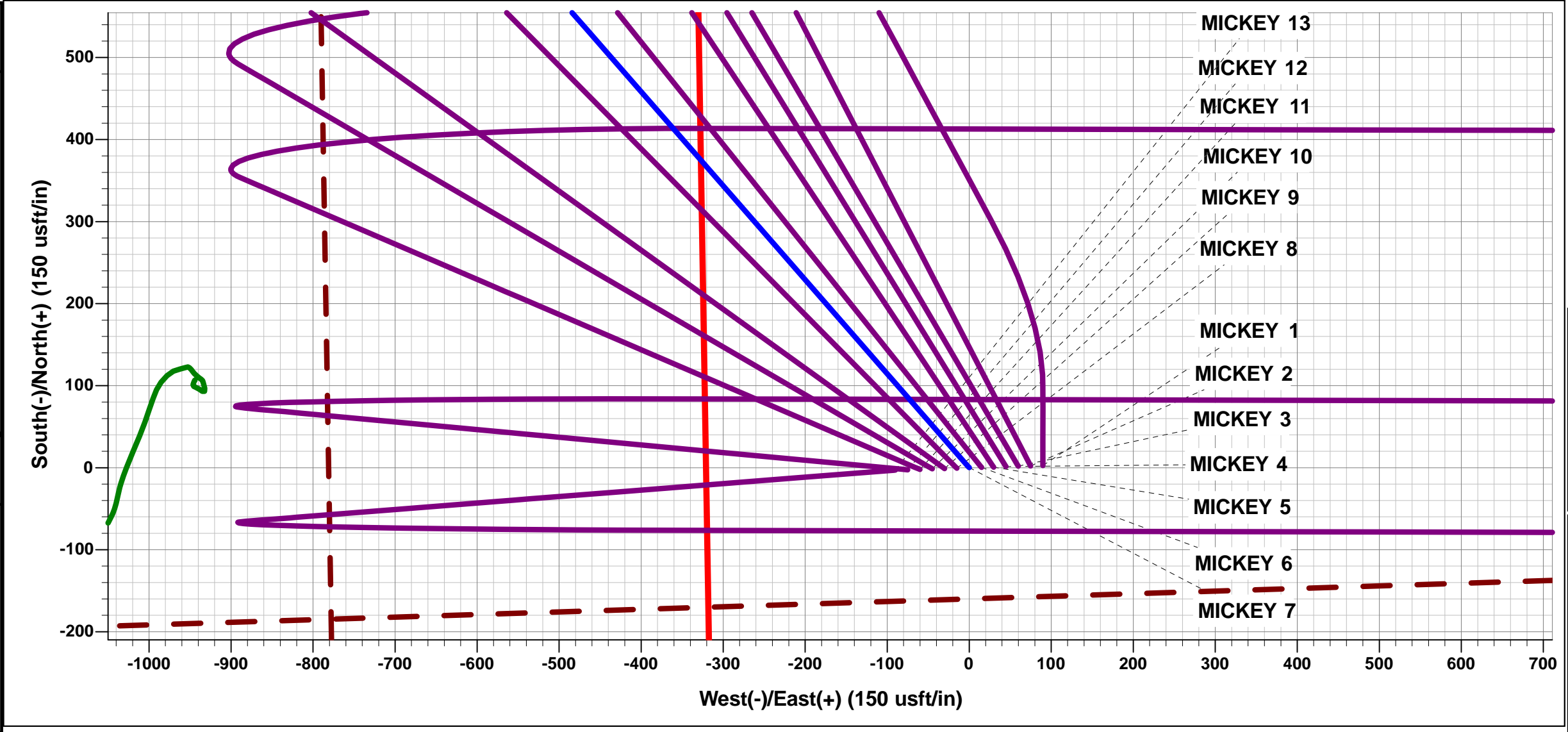




Project: WELD COUNTY, COLORADO (NAD 83)  
Site: SW NE SEC. 5 T6N R67W 6th P.M.  
Well: MICKEY 7  
Wellbore: ORIGINAL WELLBORE  
Design: PROPOSAL #2

ANNOTATIONS								
TVD	MD	Inc	Azi	+N/-S	+E/-W	VSect	Dep	Annotation
0.0	0.0	0.00	0.00	0.0	0.0	0.0	0.0	W/C: 2420ft FNL & 1858ft FEL of Sec 5
1600.0	1600.0	0.00	0.00	0.0	0.0	0.0	0.0	9 5/8" SURFACE CASING
2300.0	2300.0	0.00	0.00	0.0	0.0	0.0	0.0	START NUDGE (2°/100ft BUR)
3327.8	3351.2	21.02	318.88	143.7	-125.4	-106.9	190.7	EOB TO 21.02° INC
6383.4	6624.7	21.02	318.88	1028.4	-897.7	-765.1	1365.1	KOP (10°/100ft DGLG)
7064.0	7661.5	90.00	90.13	1223.8	-340.6	-188.2	2029.4	HZ LP: 1194ft FNL & 2178ft FEL of Sec 5
7064.0	17731.7	90.00	90.14	1200.2	9729.6	9803.3	12099.6	BHL: 1281ft FNL & 2625ft FEL of Sec 3

WELLBORE TARGET DETAILS (LAT/LONG)					
Name	TVD	+N/-S	+E/-W	Latitude	Longitude
HZ LP - MICKEY 7	7064.0	1223.8	-340.6	40.519756	-104.915750
BHL - MICKEY 7	7064.0	1200.2	9729.6	40.519686	-104.879530



FORMATION TOP DETAILS		
TVDPath	MDPath	Formation
3354.0	3379.3	PARKMAN
3954.0	4022.1	SUSSEX
4364.0	4461.3	SHANNON
6709.0	6969.5	SHARON SPRINGS
6744.0	7009.0	NIOBRARA
7014.0	7415.4	FORT HAYS
7054.0	7552.1	CODELL

PROPOSED LOCAL COORDINATES	
SHL: 2420ft FNL & 1858ft FEL of Sec 5	
LP: 1194ft FNL & 2178ft FEL of Sec 5	
BHL: 1281ft FNL & 2625ft FEL of Sec 3	

T

M

Azimuths to True North

Magnetic North: 8.39°

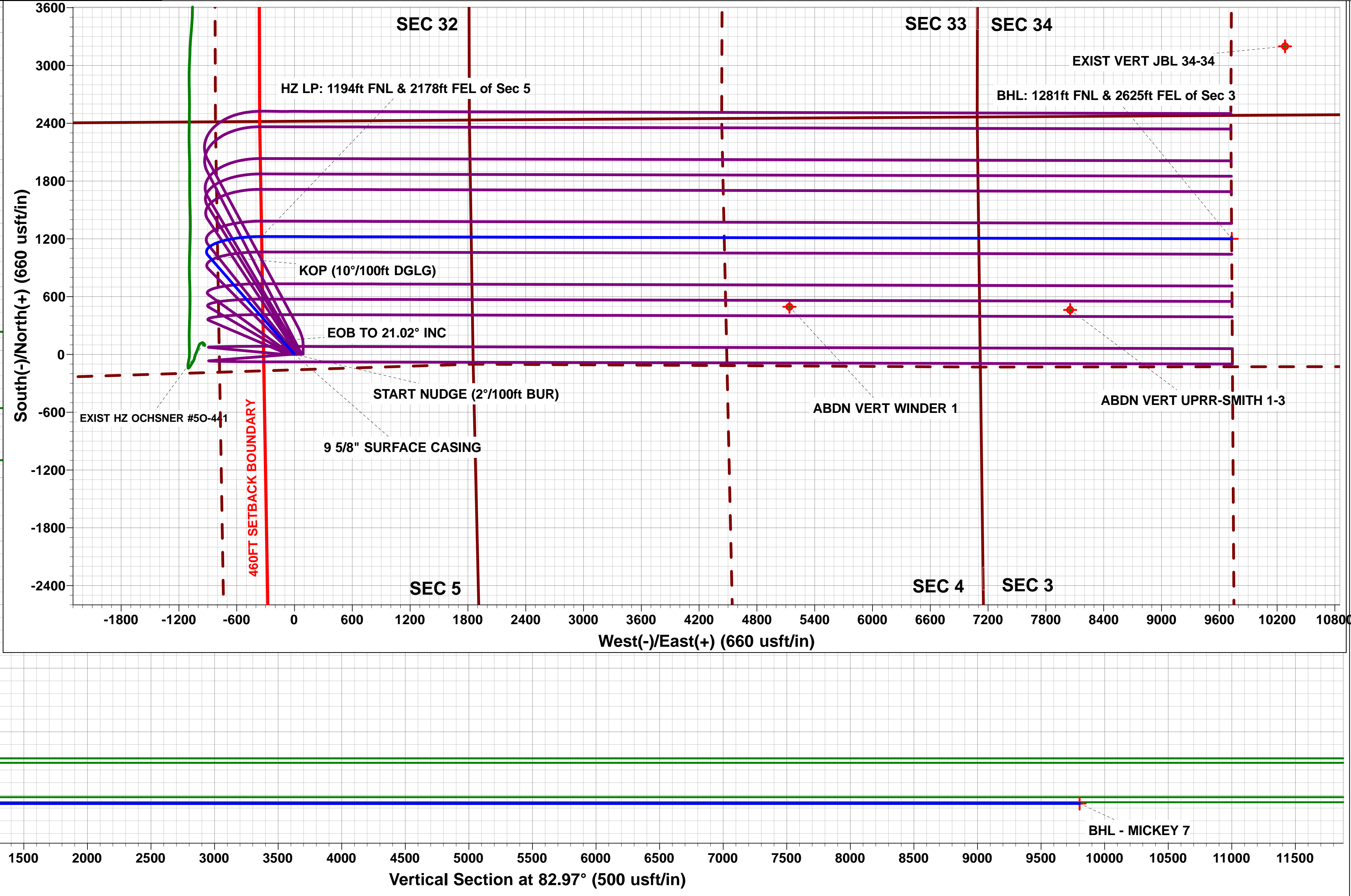
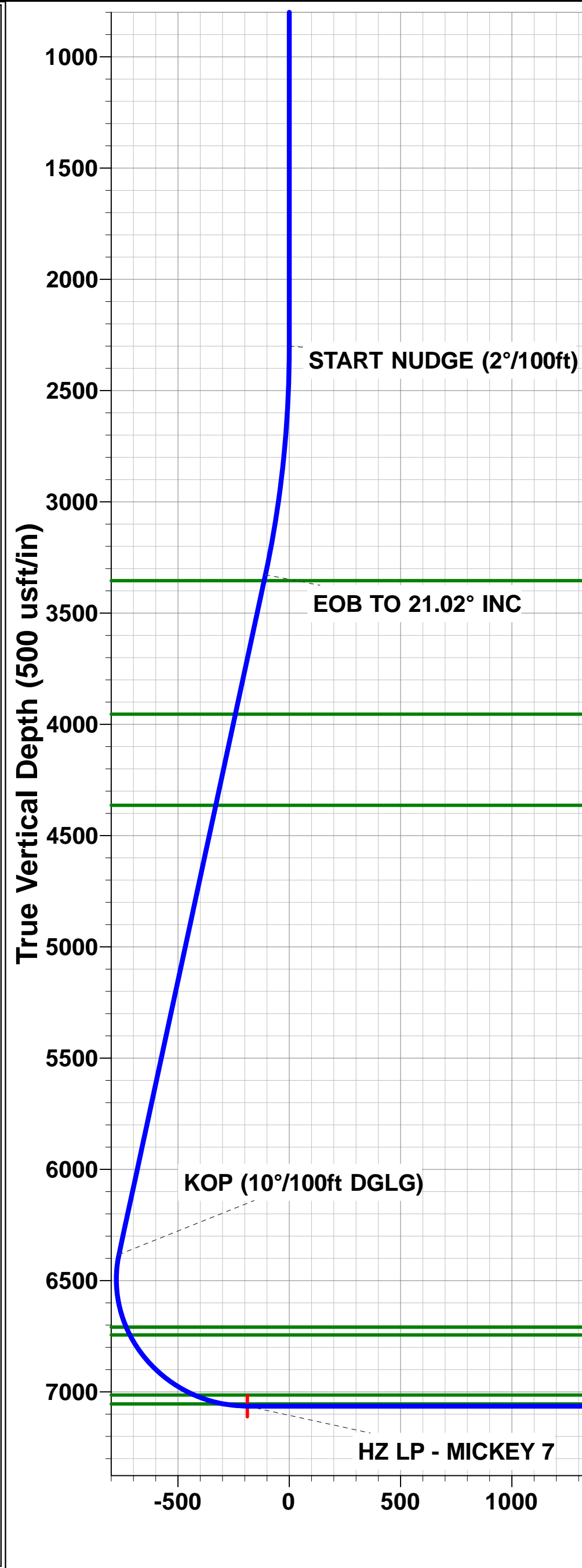
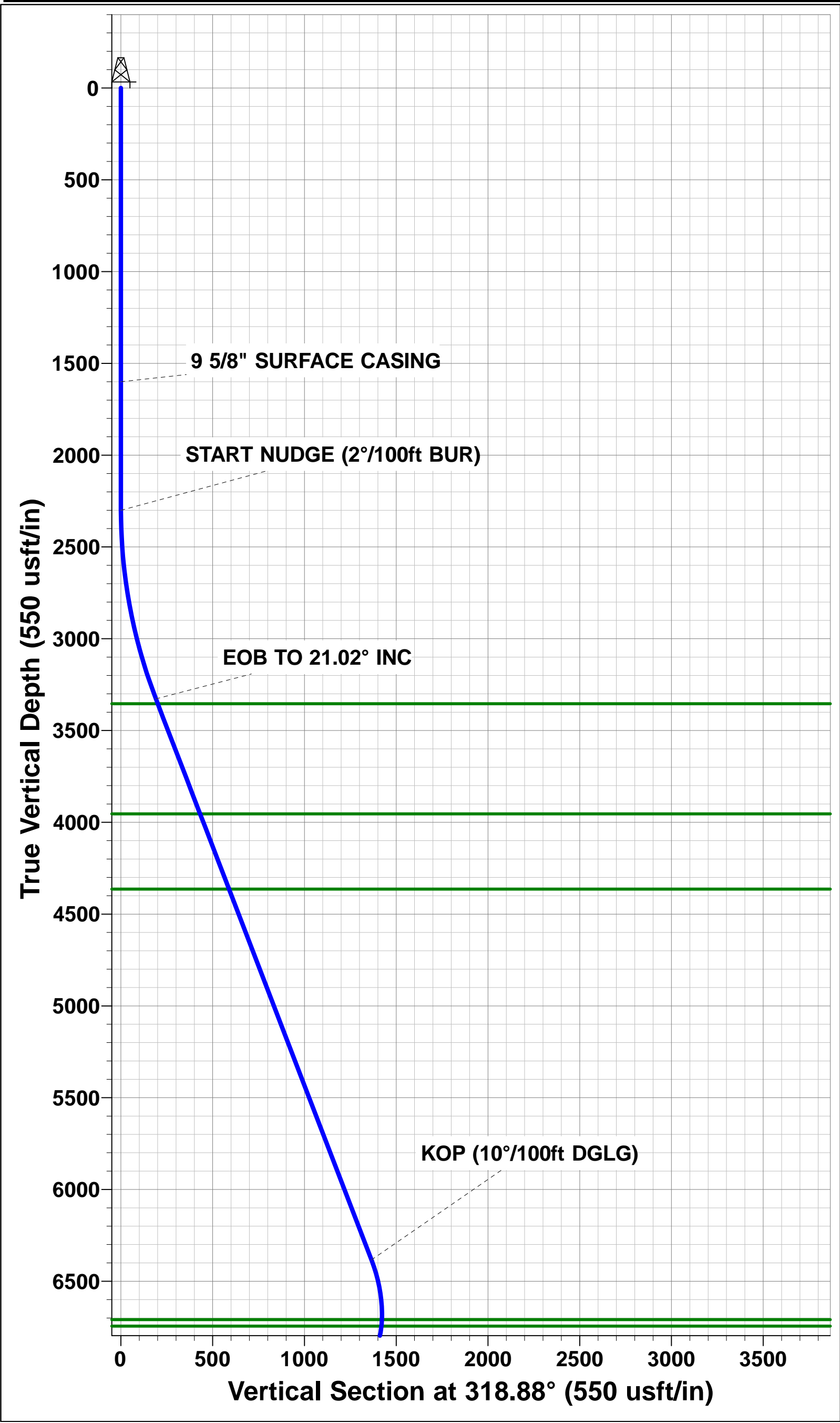
Magnetic Field

Strength: 52533.0snT

Dip Angle: 66.95°

Date: 12/08/2016

Model: IGRF2015



# Planning Report



<b>Database:</b>	EDM 5000.1 Single User Db	<b>Local Co-ordinate Reference:</b>	Well MICKEY 7
<b>Company:</b>	EXTRACTION OIL & GAS	<b>TVD Reference:</b>	KB-EST @ 4896.0usft
<b>Project:</b>	WELD COUNTY, COLORADO (NAD 83)	<b>MD Reference:</b>	KB-EST @ 4896.0usft
<b>Site:</b>	SW NE SEC. 5 T6N R67W 6th P.M.	<b>North Reference:</b>	True
<b>Well:</b>	MICKEY 7	<b>Survey Calculation Method:</b>	Minimum Curvature
<b>Wellbore:</b>	ORIGINAL WELLBORE		
<b>Design:</b>	PROPOSAL #2		

<b>Project</b>	WELD COUNTY, COLORADO (NAD 83)		
<b>Map System:</b>	US State Plane 1983	<b>System Datum:</b>	Mean Sea Level
<b>Geo Datum:</b>	North American Datum 1983		
<b>Map Zone:</b>	Colorado Northern Zone		Using geodetic scale factor

<b>Site</b>	SW NE SEC. 5 T6N R67W 6th P.M.		
<b>Site Position:</b>		<b>Northing:</b>	1,431,152.83 usft
<b>From:</b>	Lat/Long	<b>Easting:</b>	3,162,171.69 usft
<b>Position Uncertainty:</b>	0.0 usft	<b>Slot Radius:</b>	1.10000ft
		<b>Latitude:</b>	40.515451
		<b>Longitude:</b>	-104.916720
		<b>Grid Convergence:</b>	0.38 °

<b>Well</b>	MICKEY 7		
<b>Well Position</b>	<b>+N-S</b>	344.6 usft	<b>Northing:</b>
	<b>+E-W</b>	610.3 usft	<b>Easting:</b>
<b>Position Uncertainty</b>	0.0 usft		<b>Wellhead Elevation:</b>
			<b>Latitude:</b>
			<b>Longitude:</b>
			<b>Ground Level:</b>

<b>Wellbore</b>	ORIGINAL WELLBORE				
<b>Magnetics</b>	<b>Model Name</b>	<b>Sample Date</b>	<b>Declination (°)</b>	<b>Dip Angle (°)</b>	<b>Field Strength (nT)</b>
	IGRF2015	12/08/2016	8.39	66.95	52,533

<b>Design</b>	PROPOSAL #2			
<b>Audit Notes:</b>				
<b>Version:</b>	<b>Phase:</b>	PROTOTYPE	<b>Tie On Depth:</b>	0.0
<b>Vertical Section:</b>	<b>Depth From (TVD) (usft)</b>	<b>+N-S (usft)</b>	<b>+E-W (usft)</b>	<b>Direction (°)</b>
	4.0	0.0	0.0	82.97

<b>Plan Sections</b>											
MD (usft)	Inc (°)	Azi (°)	Vertical Depth	SS (usft)	+N-S (usft)	+E-W (usft)	Dogleg Rate (°/100usf)	Build Rate (°/100usf)	Turn Rate (°/100usf)	TFO (°)	Target
0.0	0.00	0.00	0.0	-4,896.0	0.0	0.0	0.00	0.00	0.00	0.00	
2,300.0	0.00	0.00	2,300.0	-2,596.0	0.0	0.0	0.00	0.00	0.00	0.00	
3,351.2	21.02	318.88	3,327.8	-1,568.2	143.7	-125.4	2.00	2.00	0.00	318.88	
6,624.7	21.02	318.88	6,383.3	1,487.3	1,028.4	-897.7	0.00	0.00	0.00	0.00	
7,661.5	90.00	90.13	7,064.0	2,168.0	1,223.8	-340.6	10.00	6.65	12.66	129.31	HZ LP - MICKEY 7
17,731.7	90.00	90.14	7,064.0	2,168.0	1,200.2	9,729.6	0.00	0.00	0.00	90.00	BHL - MICKEY 7

<b>Database:</b>	EDM 5000.1 Single User Db	<b>Local Co-ordinate Reference:</b>	Well MICKEY 7
<b>Company:</b>	EXTRACTION OIL & GAS	<b>TVD Reference:</b>	KB-EST @ 4896.0usft
<b>Project:</b>	WELD COUNTY, COLORADO (NAD 83)	<b>MD Reference:</b>	KB-EST @ 4896.0usft
<b>Site:</b>	SW NE SEC. 5 T6N R67W 6th P.M.	<b>North Reference:</b>	True
<b>Well:</b>	MICKEY 7	<b>Survey Calculation Method:</b>	Minimum Curvature
<b>Wellbore:</b>	ORIGINAL WELLBORE		
<b>Design:</b>	PROPOSAL #2		

## Planned Survey

MD (usft)	Inc (°)	Azi (°)	TVD (usft)	SS (usft)	+N/-S (usft)	+E/-W (usft)	Vertical Section (usft)	Dogleg Rate (°/100usft)	Build Rate (°/100usft)	Turn Rate (°/100usft)
<b>W/C: 2420ft FNL &amp; 1858ft FEL of Sec 5</b>										
0.0	0.00	0.00	0.0	4,896.00	0.0	0.0	0.0	0.00	0.00	0.00
100.0	0.00	0.00	100.0	4,796.00	0.0	0.0	0.0	0.00	0.00	0.00
200.0	0.00	0.00	200.0	4,696.00	0.0	0.0	0.0	0.00	0.00	0.00
300.0	0.00	0.00	300.0	4,596.00	0.0	0.0	0.0	0.00	0.00	0.00
400.0	0.00	0.00	400.0	4,496.00	0.0	0.0	0.0	0.00	0.00	0.00
500.0	0.00	0.00	500.0	4,396.00	0.0	0.0	0.0	0.00	0.00	0.00
600.0	0.00	0.00	600.0	4,296.00	0.0	0.0	0.0	0.00	0.00	0.00
700.0	0.00	0.00	700.0	4,196.00	0.0	0.0	0.0	0.00	0.00	0.00
800.0	0.00	0.00	800.0	4,096.00	0.0	0.0	0.0	0.00	0.00	0.00
900.0	0.00	0.00	900.0	3,996.00	0.0	0.0	0.0	0.00	0.00	0.00
1,000.0	0.00	0.00	1,000.0	3,896.00	0.0	0.0	0.0	0.00	0.00	0.00
1,100.0	0.00	0.00	1,100.0	3,796.00	0.0	0.0	0.0	0.00	0.00	0.00
1,200.0	0.00	0.00	1,200.0	3,696.00	0.0	0.0	0.0	0.00	0.00	0.00
1,300.0	0.00	0.00	1,300.0	3,596.00	0.0	0.0	0.0	0.00	0.00	0.00
1,400.0	0.00	0.00	1,400.0	3,496.00	0.0	0.0	0.0	0.00	0.00	0.00
1,500.0	0.00	0.00	1,500.0	3,396.00	0.0	0.0	0.0	0.00	0.00	0.00
<b>9 5/8" SURFACE CASING</b>										
1,600.0	0.00	0.00	1,600.0	3,296.00	0.0	0.0	0.0	0.00	0.00	0.00
1,700.0	0.00	0.00	1,700.0	3,196.00	0.0	0.0	0.0	0.00	0.00	0.00
1,800.0	0.00	0.00	1,800.0	3,096.00	0.0	0.0	0.0	0.00	0.00	0.00
1,900.0	0.00	0.00	1,900.0	2,996.00	0.0	0.0	0.0	0.00	0.00	0.00
2,000.0	0.00	0.00	2,000.0	2,896.00	0.0	0.0	0.0	0.00	0.00	0.00
2,100.0	0.00	0.00	2,100.0	2,796.00	0.0	0.0	0.0	0.00	0.00	0.00
2,200.0	0.00	0.00	2,200.0	2,696.00	0.0	0.0	0.0	0.00	0.00	0.00
<b>START NUDGE (2°/100ft BUR)</b>										
2,300.0	0.00	0.00	2,300.0	2,596.00	0.0	0.0	0.0	0.00	0.00	0.00
2,400.0	2.00	318.88	2,400.0	2,496.02	1.3	-1.1	-1.0	2.00	2.00	0.00
2,500.0	4.00	318.88	2,499.8	2,396.16	5.3	-4.6	-3.9	2.00	2.00	0.00
2,600.0	6.00	318.88	2,599.5	2,296.55	11.8	-10.3	-8.8	2.00	2.00	0.00
2,700.0	8.00	318.88	2,698.7	2,197.30	21.0	-18.3	-15.6	2.00	2.00	0.00
2,800.0	10.00	318.88	2,797.5	2,098.53	32.8	-28.6	-24.4	2.00	2.00	0.00
2,900.0	12.00	318.88	2,895.6	2,000.38	47.2	-41.2	-35.1	2.00	2.00	0.00
3,000.0	14.00	318.88	2,993.1	1,902.94	64.1	-56.0	-47.7	2.00	2.00	0.00
3,100.0	16.00	318.88	3,089.6	1,806.36	83.6	-73.0	-62.2	2.00	2.00	0.00
3,200.0	18.00	318.88	3,185.3	1,710.73	105.6	-92.2	-78.6	2.00	2.00	0.00
3,300.0	20.00	318.88	3,279.8	1,616.18	130.2	-113.6	-96.8	2.00	2.00	0.00
<b>EOB TO 21.02° INC</b>										
3,351.2	21.02	318.88	3,327.8	1,568.23	143.7	-125.4	-106.9	2.00	2.00	0.00
<b>PARKMAN</b>										
3,379.3	21.02	318.88	3,354.0	1,542.00	151.3	-132.0	-112.5	0.00	0.00	0.00
3,400.0	21.02	318.88	3,373.3	1,522.68	156.9	-136.9	-116.7	0.00	0.00	0.00
3,500.0	21.02	318.88	3,466.7	1,429.34	183.9	-160.5	-136.8	0.00	0.00	0.00
3,600.0	21.02	318.88	3,560.0	1,335.99	210.9	-184.1	-156.9	0.00	0.00	0.00
3,700.0	21.02	318.88	3,653.3	1,242.65	237.9	-207.7	-177.0	0.00	0.00	0.00
3,800.0	21.02	318.88	3,746.7	1,149.31	265.0	-231.3	-197.1	0.00	0.00	0.00
3,900.0	21.02	318.88	3,840.0	1,055.96	292.0	-254.9	-217.2	0.00	0.00	0.00
4,000.0	21.02	318.88	3,933.4	962.62	319.0	-278.5	-237.3	0.00	0.00	0.00
<b>SUSSEX</b>										
4,022.1	21.02	318.88	3,954.0	942.00	325.0	-283.7	-241.8	0.00	0.00	0.00
4,100.0	21.02	318.88	4,026.7	869.28	346.0	-302.1	-257.4	0.00	0.00	0.00
4,200.0	21.02	318.88	4,120.1	775.93	373.1	-325.7	-277.6	0.00	0.00	0.00
4,300.0	21.02	318.88	4,213.4	682.59	400.1	-349.3	-297.7	0.00	0.00	0.00

# Planning Report



<b>Database:</b>	EDM 5000.1 Single User Db	<b>Local Co-ordinate Reference:</b>	Well MICKEY 7
<b>Company:</b>	EXTRACTION OIL & GAS	<b>TVD Reference:</b>	KB-EST @ 4896.0usft
<b>Project:</b>	WELD COUNTY, COLORADO (NAD 83)	<b>MD Reference:</b>	KB-EST @ 4896.0usft
<b>Site:</b>	SW NE SEC. 5 T6N R67W 6th P.M.	<b>North Reference:</b>	True
<b>Well:</b>	MICKEY 7	<b>Survey Calculation Method:</b>	Minimum Curvature
<b>Wellbore:</b>	ORIGINAL WELLBORE		
<b>Design:</b>	PROPOSAL #2		

## Planned Survey

MD (usft)	Inc (°)	Azi (°)	TVD (usft)	SS (usft)	+N/-S (usft)	+E/-W (usft)	Vertical Section (usft)	Dogleg Rate (°/100usft)	Build Rate (°/100usft)	Turn Rate (°/100usft)
4,400.0	21.02	318.88	4,306.8	589.25	427.1	-372.9	-317.8	0.00	0.00	0.00
<b>SHANNON</b>										
<b>4,461.3</b>	<b>21.02</b>	<b>318.88</b>	<b>4,364.0</b>	<b>532.00</b>	<b>443.7</b>	<b>-387.3</b>	<b>-330.1</b>	<b>0.00</b>	<b>0.00</b>	<b>0.00</b>
4,500.0	21.02	318.88	4,400.1	495.91	454.1	-396.5	-337.9	0.00	0.00	0.00
4,600.0	21.02	318.88	4,493.4	402.56	481.2	-420.0	-358.0	0.00	0.00	0.00
4,700.0	21.02	318.88	4,586.8	309.22	508.2	-443.6	-378.1	0.00	0.00	0.00
4,800.0	21.02	318.88	4,680.1	215.88	535.2	-467.2	-398.2	0.00	0.00	0.00
4,900.0	21.02	318.88	4,773.5	122.53	562.3	-490.8	-418.3	0.00	0.00	0.00
5,000.0	21.02	318.88	4,866.8	29.19	589.3	-514.4	-438.4	0.00	0.00	0.00
5,100.0	21.02	318.88	4,960.2	-64.15	616.3	-538.0	-458.5	0.00	0.00	0.00
5,200.0	21.02	318.88	5,053.5	-157.50	643.3	-561.6	-478.6	0.00	0.00	0.00
5,300.0	21.02	318.88	5,146.8	-250.84	670.4	-585.2	-498.7	0.00	0.00	0.00
5,400.0	21.02	318.88	5,240.2	-344.18	697.4	-608.8	-518.8	0.00	0.00	0.00
5,500.0	21.02	318.88	5,333.5	-437.53	724.4	-632.4	-538.9	0.00	0.00	0.00
5,600.0	21.02	318.88	5,426.9	-530.87	751.4	-656.0	-559.0	0.00	0.00	0.00
5,700.0	21.02	318.88	5,520.2	-624.21	778.5	-679.6	-579.2	0.00	0.00	0.00
5,800.0	21.02	318.88	5,613.6	-717.56	805.5	-703.2	-599.3	0.00	0.00	0.00
5,900.0	21.02	318.88	5,706.9	-810.90	832.5	-726.8	-619.4	0.00	0.00	0.00
6,000.0	21.02	318.88	5,800.2	-904.24	859.5	-750.4	-639.5	0.00	0.00	0.00
6,100.0	21.02	318.88	5,893.6	-997.58	886.6	-773.9	-659.6	0.00	0.00	0.00
6,200.0	21.02	318.88	5,986.9	-1,090.93	913.6	-797.5	-679.7	0.00	0.00	0.00
6,300.0	21.02	318.88	6,080.3	-1,184.27	940.6	-821.1	-699.8	0.00	0.00	0.00
6,400.0	21.02	318.88	6,173.6	-1,277.61	967.6	-844.7	-719.9	0.00	0.00	0.00
6,500.0	21.02	318.88	6,267.0	-1,370.96	994.7	-868.3	-740.0	0.00	0.00	0.00
6,600.0	21.02	318.88	6,360.3	-1,464.30	1,021.7	-891.9	-760.1	0.00	0.00	0.00
<b>KOP (10°/100ft DGLG)</b>										
<b>6,624.7</b>	<b>21.02</b>	<b>318.88</b>	<b>6,383.4</b>	<b>-1,487.36</b>	<b>1,028.4</b>	<b>-897.7</b>	<b>-765.1</b>	<b>0.00</b>	<b>0.00</b>	<b>0.00</b>
6,700.0	17.22	338.91	6,454.6	-1,558.56	1,049.0	-910.6	-775.4	10.00	-5.05	26.60
6,800.0	16.56	13.75	6,550.5	-1,654.49	1,076.7	-912.6	-773.9	10.00	-0.66	34.84
6,900.0	21.13	41.74	6,645.3	-1,749.30	1,104.1	-897.2	-755.3	10.00	4.57	27.99
<b>SHARON SPRINGS</b>										
<b>6,969.5</b>	<b>26.09</b>	<b>53.97</b>	<b>6,709.0</b>	<b>-1,813.00</b>	<b>1,122.4</b>	<b>-876.4</b>	<b>-732.4</b>	<b>10.00</b>	<b>7.14</b>	<b>17.60</b>
7,000.0	28.52	58.00	6,736.1	-1,840.10	1,130.2	-864.8	-720.0	10.00	7.95	13.23
<b>NIOBRARA</b>										
<b>7,009.0</b>	<b>29.25</b>	<b>59.08</b>	<b>6,744.0</b>	<b>-1,848.00</b>	<b>1,132.5</b>	<b>-861.1</b>	<b>-716.0</b>	<b>10.00</b>	<b>8.18</b>	<b>11.90</b>
7,100.0	37.07	67.65	6,820.1	-1,924.14	1,154.4	-816.6	-669.1	10.00	8.59	9.42
7,200.0	46.14	74.01	6,894.9	-1,998.87	1,175.8	-753.9	-604.3	10.00	9.07	6.37
7,300.0	55.48	78.67	6,958.0	-2,062.01	1,193.9	-678.7	-527.4	10.00	9.33	4.65
7,400.0	64.95	82.37	7,007.6	-2,111.65	1,208.1	-593.2	-440.8	10.00	9.47	3.70
<b>FORT HAYS</b>										
<b>7,415.4</b>	<b>66.42</b>	<b>82.89</b>	<b>7,014.0</b>	<b>-2,118.00</b>	<b>1,209.9</b>	<b>-579.2</b>	<b>-426.7</b>	<b>10.00</b>	<b>9.52</b>	<b>3.34</b>
7,500.0	74.50	85.54	7,042.3	-2,146.27	1,217.8	-500.0	-347.1	10.00	9.56	3.13
<b>CODELL</b>										
<b>7,552.1</b>	<b>79.50</b>	<b>87.06</b>	<b>7,054.0</b>	<b>-2,158.00</b>	<b>1,221.1</b>	<b>-449.3</b>	<b>-296.4</b>	<b>10.00</b>	<b>9.59</b>	<b>2.93</b>
7,600.0	84.09	88.42	7,060.8	-2,164.83	1,223.0	-402.0	-249.2	10.00	9.60	2.84
<b>HZ LP: 1194ft FNL &amp; 2178ft FEL of Sec 5</b>										
<b>7,661.5</b>	<b>90.00</b>	<b>90.13</b>	<b>7,064.0</b>	<b>-2,168.00</b>	<b>1,223.8</b>	<b>-340.6</b>	<b>-188.2</b>	<b>10.00</b>	<b>9.61</b>	<b>2.79</b>
7,700.0	90.00	90.13	7,064.0	-2,168.00	1,223.7	-302.1	-150.0	0.01	0.01	0.00
7,800.0	90.00	90.13	7,064.0	-2,168.00	1,223.4	-202.1	-50.8	0.00	0.00	0.00
7,900.0	90.00	90.13	7,064.0	-2,168.00	1,223.2	-102.1	48.4	0.00	0.00	0.00
8,000.0	90.00	90.13	7,064.0	-2,168.00	1,223.0	-2.1	147.6	0.00	0.00	0.00
8,100.0	90.00	90.13	7,064.0	-2,168.00	1,222.7	97.9	246.8	0.00	0.00	0.00
8,200.0	90.00	90.13	7,064.0	-2,168.00	1,222.5	197.9	346.1	0.00	0.00	0.00



## Planning Report



<b>Database:</b>	EDM 5000.1 Single User Db	<b>Local Co-ordinate Reference:</b>	Well MICKEY 7
<b>Company:</b>	EXTRACTION OIL & GAS	<b>TVD Reference:</b>	KB-EST @ 4896.0usft
<b>Project:</b>	WELD COUNTY, COLORADO (NAD 83)	<b>MD Reference:</b>	KB-EST @ 4896.0usft
<b>Site:</b>	SW NE SEC. 5 T6N R67W 6th P.M.	<b>North Reference:</b>	True
<b>Well:</b>	MICKEY 7	<b>Survey Calculation Method:</b>	Minimum Curvature
<b>Wellbore:</b>	ORIGINAL WELLBORE		
<b>Design:</b>	PROPOSAL #2		

Planned Survey										
MD (usft)	Inc (°)	Azi (°)	TVD (usft)	SS (usft)	+N/-S (usft)	+E/-W (usft)	Vertical Section (usft)	Dogleg Rate (°/100usft)	Build Rate (°/100usft)	Turn Rate (°/100usft)
8,300.0	90.00	90.13	7,064.0	-2,168.00	1,222.3	297.9	445.3	0.00	0.00	0.00
8,400.0	90.00	90.13	7,064.0	-2,168.00	1,222.0	397.9	544.5	0.00	0.00	0.00
8,500.0	90.00	90.13	7,064.0	-2,168.00	1,221.8	497.9	643.7	0.00	0.00	0.00
8,600.0	90.00	90.13	7,064.0	-2,168.00	1,221.6	597.9	742.9	0.00	0.00	0.00
8,700.0	90.00	90.13	7,064.0	-2,168.00	1,221.3	697.9	842.2	0.00	0.00	0.00
8,800.0	90.00	90.13	7,064.0	-2,168.00	1,221.1	797.9	941.4	0.00	0.00	0.00
8,900.0	90.00	90.13	7,064.0	-2,168.00	1,220.9	897.9	1,040.6	0.00	0.00	0.00
9,000.0	90.00	90.13	7,064.0	-2,168.00	1,220.6	997.9	1,139.8	0.00	0.00	0.00
9,100.0	90.00	90.13	7,064.0	-2,168.00	1,220.4	1,097.9	1,239.0	0.00	0.00	0.00
9,200.0	90.00	90.13	7,064.0	-2,168.00	1,220.2	1,197.9	1,338.3	0.00	0.00	0.00
9,300.0	90.00	90.13	7,064.0	-2,168.00	1,219.9	1,297.9	1,437.5	0.00	0.00	0.00
9,400.0	90.00	90.13	7,064.0	-2,168.00	1,219.7	1,397.9	1,536.7	0.00	0.00	0.00
9,500.0	90.00	90.13	7,064.0	-2,168.00	1,219.5	1,497.9	1,635.9	0.00	0.00	0.00
9,600.0	90.00	90.13	7,064.0	-2,168.00	1,219.2	1,597.9	1,735.1	0.00	0.00	0.00
9,700.0	90.00	90.13	7,064.0	-2,168.00	1,219.0	1,697.9	1,834.3	0.00	0.00	0.00
9,800.0	90.00	90.13	7,064.0	-2,168.00	1,218.8	1,797.9	1,933.6	0.00	0.00	0.00
9,900.0	90.00	90.13	7,064.0	-2,168.00	1,218.5	1,897.9	2,032.8	0.00	0.00	0.00
10,000.0	90.00	90.13	7,064.0	-2,168.00	1,218.3	1,997.9	2,132.0	0.00	0.00	0.00
10,100.0	90.00	90.13	7,064.0	-2,168.00	1,218.1	2,097.9	2,231.2	0.00	0.00	0.00
10,200.0	90.00	90.13	7,064.0	-2,168.00	1,217.9	2,197.9	2,330.4	0.00	0.00	0.00
10,300.0	90.00	90.13	7,064.0	-2,168.00	1,217.6	2,297.9	2,429.7	0.00	0.00	0.00
10,400.0	90.00	90.13	7,064.0	-2,168.00	1,217.4	2,397.9	2,528.9	0.00	0.00	0.00
10,500.0	90.00	90.13	7,064.0	-2,168.00	1,217.2	2,497.9	2,628.1	0.00	0.00	0.00
10,600.0	90.00	90.13	7,064.0	-2,168.00	1,216.9	2,597.9	2,727.3	0.00	0.00	0.00
10,700.0	90.00	90.13	7,064.0	-2,168.00	1,216.7	2,697.9	2,826.5	0.00	0.00	0.00
10,800.0	90.00	90.13	7,064.0	-2,168.00	1,216.5	2,797.9	2,925.8	0.00	0.00	0.00
10,900.0	90.00	90.13	7,064.0	-2,168.00	1,216.2	2,897.9	3,025.0	0.00	0.00	0.00
11,000.0	90.00	90.13	7,064.0	-2,168.00	1,216.0	2,997.9	3,124.2	0.00	0.00	0.00
11,100.0	90.00	90.13	7,064.0	-2,168.00	1,215.7	3,097.9	3,223.4	0.00	0.00	0.00
11,200.0	90.00	90.13	7,064.0	-2,168.00	1,215.5	3,197.9	3,322.6	0.00	0.00	0.00
11,300.0	90.00	90.13	7,064.0	-2,168.00	1,215.3	3,297.9	3,421.9	0.00	0.00	0.00
11,400.0	90.00	90.13	7,064.0	-2,168.00	1,215.0	3,397.9	3,521.1	0.00	0.00	0.00
11,500.0	90.00	90.13	7,064.0	-2,168.00	1,214.8	3,497.9	3,620.3	0.00	0.00	0.00
11,600.0	90.00	90.13	7,064.0	-2,168.00	1,214.6	3,597.9	3,719.5	0.00	0.00	0.00
11,700.0	90.00	90.13	7,064.0	-2,168.00	1,214.3	3,697.9	3,818.7	0.00	0.00	0.00
11,800.0	90.00	90.13	7,064.0	-2,168.00	1,214.1	3,797.9	3,917.9	0.00	0.00	0.00
11,900.0	90.00	90.13	7,064.0	-2,168.00	1,213.9	3,897.9	4,017.2	0.00	0.00	0.00
12,000.0	90.00	90.13	7,064.0	-2,168.00	1,213.6	3,997.9	4,116.4	0.00	0.00	0.00
12,100.0	90.00	90.13	7,064.0	-2,168.00	1,213.4	4,097.9	4,215.6	0.00	0.00	0.00
12,200.0	90.00	90.13	7,064.0	-2,168.00	1,213.2	4,197.9	4,314.8	0.00	0.00	0.00
12,300.0	90.00	90.13	7,064.0	-2,168.00	1,212.9	4,297.9	4,414.0	0.00	0.00	0.00
12,400.0	90.00	90.13	7,064.0	-2,168.00	1,212.7	4,397.9	4,513.3	0.00	0.00	0.00
12,500.0	90.00	90.13	7,064.0	-2,168.00	1,212.5	4,497.9	4,612.5	0.00	0.00	0.00
12,600.0	90.00	90.13	7,064.0	-2,168.00	1,212.2	4,597.9	4,711.7	0.00	0.00	0.00
12,700.0	90.00	90.13	7,064.0	-2,168.00	1,212.0	4,697.9	4,810.9	0.00	0.00	0.00
12,800.0	90.00	90.13	7,064.0	-2,168.00	1,211.8	4,797.9	4,910.1	0.00	0.00	0.00
12,900.0	90.00	90.13	7,064.0	-2,168.00	1,211.5	4,897.9	5,009.4	0.00	0.00	0.00
13,000.0	90.00	90.13	7,064.0	-2,168.00	1,211.3	4,997.9	5,108.6	0.00	0.00	0.00
13,100.0	90.00	90.13	7,064.0	-2,168.00	1,211.1	5,097.9	5,207.8	0.00	0.00	0.00
13,200.0	90.00	90.13	7,064.0	-2,168.00	1,210.8	5,197.9	5,307.0	0.00	0.00	0.00
13,300.0	90.00	90.13	7,064.0	-2,168.00	1,210.6	5,297.9	5,406.2	0.00	0.00	0.00
13,400.0	90.00	90.13	7,064.0	-2,168.00	1,210.4	5,397.9	5,505.4	0.00	0.00	0.00
13,500.0	90.00	90.13	7,064.0	-2,168.00	1,210.1	5,497.9	5,604.7	0.00	0.00	0.00
13,600.0	90.00	90.13	7,064.0	-2,168.00	1,209.9	5,597.9	5,703.9	0.00	0.00	0.00

# Planning Report



<b>Database:</b>	EDM 5000.1 Single User Db	<b>Local Co-ordinate Reference:</b>	Well MICKEY 7
<b>Company:</b>	EXTRACTION OIL & GAS	<b>TVD Reference:</b>	KB-EST @ 4896.0usft
<b>Project:</b>	WELD COUNTY, COLORADO (NAD 83)	<b>MD Reference:</b>	KB-EST @ 4896.0usft
<b>Site:</b>	SW NE SEC. 5 T6N R67W 6th P.M.	<b>North Reference:</b>	True
<b>Well:</b>	MICKEY 7	<b>Survey Calculation Method:</b>	Minimum Curvature
<b>Wellbore:</b>	ORIGINAL WELLBORE		
<b>Design:</b>	PROPOSAL #2		

Planned Survey										
MD (usft)	Inc (°)	Azi (°)	TVD (usft)	SS (usft)	+N/-S (usft)	+E/-W (usft)	Vertical Section (usft)	Dogleg Rate (°/100usft)	Build Rate (°/100usft)	Turn Rate (°/100usft)
13,700.0	90.00	90.13	7,064.0	-2,168.00	1,209.7	5,697.9	5,803.1	0.00	0.00	0.00
13,800.0	90.00	90.13	7,064.0	-2,168.00	1,209.4	5,797.9	5,902.3	0.00	0.00	0.00
13,900.0	90.00	90.13	7,064.0	-2,168.00	1,209.2	5,897.9	6,001.5	0.00	0.00	0.00
14,000.0	90.00	90.13	7,064.0	-2,168.00	1,209.0	5,997.9	6,100.8	0.00	0.00	0.00
14,100.0	90.00	90.13	7,064.0	-2,168.00	1,208.7	6,097.9	6,200.0	0.00	0.00	0.00
14,200.0	90.00	90.13	7,064.0	-2,168.00	1,208.5	6,197.9	6,299.2	0.00	0.00	0.00
14,300.0	90.00	90.13	7,064.0	-2,168.00	1,208.3	6,297.9	6,398.4	0.00	0.00	0.00
14,400.0	90.00	90.13	7,064.0	-2,168.00	1,208.0	6,397.9	6,497.6	0.00	0.00	0.00
14,500.0	90.00	90.13	7,064.0	-2,168.00	1,207.8	6,497.9	6,596.9	0.00	0.00	0.00
14,600.0	90.00	90.13	7,064.0	-2,168.00	1,207.6	6,597.9	6,696.1	0.00	0.00	0.00
14,700.0	90.00	90.13	7,064.0	-2,168.00	1,207.3	6,697.9	6,795.3	0.00	0.00	0.00
14,800.0	90.00	90.13	7,064.0	-2,168.00	1,207.1	6,797.9	6,894.5	0.00	0.00	0.00
14,900.0	90.00	90.13	7,064.0	-2,168.00	1,206.8	6,897.9	6,993.7	0.00	0.00	0.00
15,000.0	90.00	90.13	7,064.0	-2,168.00	1,206.6	6,997.9	7,092.9	0.00	0.00	0.00
15,100.0	90.00	90.13	7,064.0	-2,168.00	1,206.4	7,097.9	7,192.2	0.00	0.00	0.00
15,200.0	90.00	90.13	7,064.0	-2,168.00	1,206.1	7,197.9	7,291.4	0.00	0.00	0.00
15,300.0	90.00	90.13	7,064.0	-2,168.00	1,205.9	7,297.9	7,390.6	0.00	0.00	0.00
15,400.0	90.00	90.13	7,064.0	-2,168.00	1,205.7	7,397.9	7,489.8	0.00	0.00	0.00
15,500.0	90.00	90.13	7,064.0	-2,168.00	1,205.4	7,497.9	7,589.0	0.00	0.00	0.00
15,600.0	90.00	90.13	7,064.0	-2,168.00	1,205.2	7,597.9	7,688.3	0.00	0.00	0.00
15,700.0	90.00	90.13	7,064.0	-2,168.00	1,205.0	7,697.9	7,787.5	0.00	0.00	0.00
15,800.0	90.00	90.13	7,064.0	-2,168.00	1,204.7	7,797.9	7,886.7	0.00	0.00	0.00
15,900.0	90.00	90.13	7,064.0	-2,168.00	1,204.5	7,897.9	7,985.9	0.00	0.00	0.00
16,000.0	90.00	90.13	7,064.0	-2,168.00	1,204.3	7,997.9	8,085.1	0.00	0.00	0.00
16,100.0	90.00	90.13	7,064.0	-2,168.00	1,204.0	8,097.9	8,184.4	0.00	0.00	0.00
16,200.0	90.00	90.13	7,064.0	-2,168.00	1,203.8	8,197.9	8,283.6	0.00	0.00	0.00
16,300.0	90.00	90.14	7,064.0	-2,168.00	1,203.6	8,297.9	8,382.8	0.00	0.00	0.00
16,400.0	90.00	90.14	7,064.0	-2,168.00	1,203.3	8,397.9	8,482.0	0.00	0.00	0.00
16,500.0	90.00	90.14	7,064.0	-2,168.00	1,203.1	8,497.9	8,581.2	0.00	0.00	0.00
16,600.0	90.00	90.14	7,064.0	-2,168.00	1,202.8	8,597.9	8,680.4	0.00	0.00	0.00
16,700.0	90.00	90.14	7,064.0	-2,168.00	1,202.6	8,697.9	8,779.7	0.00	0.00	0.00
16,800.0	90.00	90.14	7,064.0	-2,168.00	1,202.4	8,797.9	8,878.9	0.00	0.00	0.00
16,900.0	90.00	90.14	7,064.0	-2,168.00	1,202.1	8,897.9	8,978.1	0.00	0.00	0.00
17,000.0	90.00	90.14	7,064.0	-2,168.00	1,201.9	8,997.9	9,077.3	0.00	0.00	0.00
17,100.0	90.00	90.14	7,064.0	-2,168.00	1,201.7	9,097.9	9,176.5	0.00	0.00	0.00
17,200.0	90.00	90.14	7,064.0	-2,168.00	1,201.4	9,197.9	9,275.8	0.00	0.00	0.00
17,300.0	90.00	90.14	7,064.0	-2,168.00	1,201.2	9,297.9	9,375.0	0.00	0.00	0.00
17,400.0	90.00	90.14	7,064.0	-2,168.00	1,201.0	9,397.9	9,474.2	0.00	0.00	0.00
17,500.0	90.00	90.14	7,064.0	-2,168.00	1,200.7	9,497.9	9,573.4	0.00	0.00	0.00
17,600.0	90.00	90.14	7,064.0	-2,168.00	1,200.5	9,597.9	9,672.6	0.00	0.00	0.00
17,700.0	90.00	90.14	7,064.0	-2,168.00	1,200.2	9,697.9	9,771.9	0.00	0.00	0.00
<b>BHL: 1281ft FNL &amp; 2625ft FEL of Sec 3</b>										
<b>17,731.7</b>	<b>90.00</b>	<b>90.14</b>	<b>7,064.0</b>	<b>-2,168.00</b>	<b>1,200.2</b>	<b>9,729.6</b>	<b>9,803.3</b>	<b>0.00</b>	<b>0.00</b>	<b>0.00</b>

<b>Database:</b>	EDM 5000.1 Single User Db	<b>Local Co-ordinate Reference:</b>	Well MICKEY 7
<b>Company:</b>	EXTRACTION OIL & GAS	<b>TVD Reference:</b>	KB-EST @ 4896.0usft
<b>Project:</b>	WELD COUNTY, COLORADO (NAD 83)	<b>MD Reference:</b>	KB-EST @ 4896.0usft
<b>Site:</b>	SW NE SEC. 5 T6N R67W 6th P.M.	<b>North Reference:</b>	True
<b>Well:</b>	MICKEY 7	<b>Survey Calculation Method:</b>	Minimum Curvature
<b>Wellbore:</b>	ORIGINAL WELLBORE		
<b>Design:</b>	PROPOSAL #2		

## Formations

MD (usft)	TVD (usft)	Name	Lithology	Dip (°)	Dip Direction (°)
3,379.3	3,354.0	PARKMAN			
4,022.1	3,954.0	SUSSEX			
4,461.3	4,364.0	SHANNON			
6,969.5	6,709.0	SHARON SPRINGS			
7,009.0	6,744.0	NIOBRARA			
7,415.4	7,014.0	FORT HAYS			
7,552.1	7,054.0	CODELL			

## Plan Annotations

MD (usft)	TVD (usft)	Local Coordinates		Comment
		+N/-S (usft)	+E/-W (usft)	
0.0	0.0	0.0	0.0	W/C: 2420ft FNL & 1858ft FEL of Sec 5
1,600.0	1,600.0	0.0	0.0	9 5/8" SURFACE CASING
2,300.0	2,300.0	0.0	0.0	START NUDGE (2°/100ft BUR)
3,351.2	3,327.8	143.7	-125.4	EOB TO 21.02° INC
6,624.7	6,383.4	1,028.4	-897.7	KOP (10°/100ft DGLG)
7,661.5	7,064.0	1,223.8	-340.6	HZ LP: 1194ft FNL & 2178ft FEL of Sec 5
17,731.7	7,064.0	1,200.2	9,729.6	BHL: 1281ft FNL & 2625ft FEL of Sec 3