

EXTRACTION OIL & GAS

WELD COUNTY, COLORADO (NAD 83)

SW NE SEC. 5 T6N R67W 6th P.M.

MICKEY 6

ORIGINAL WELLBORE

07 October, 2016

Plan: PROPOSAL #2

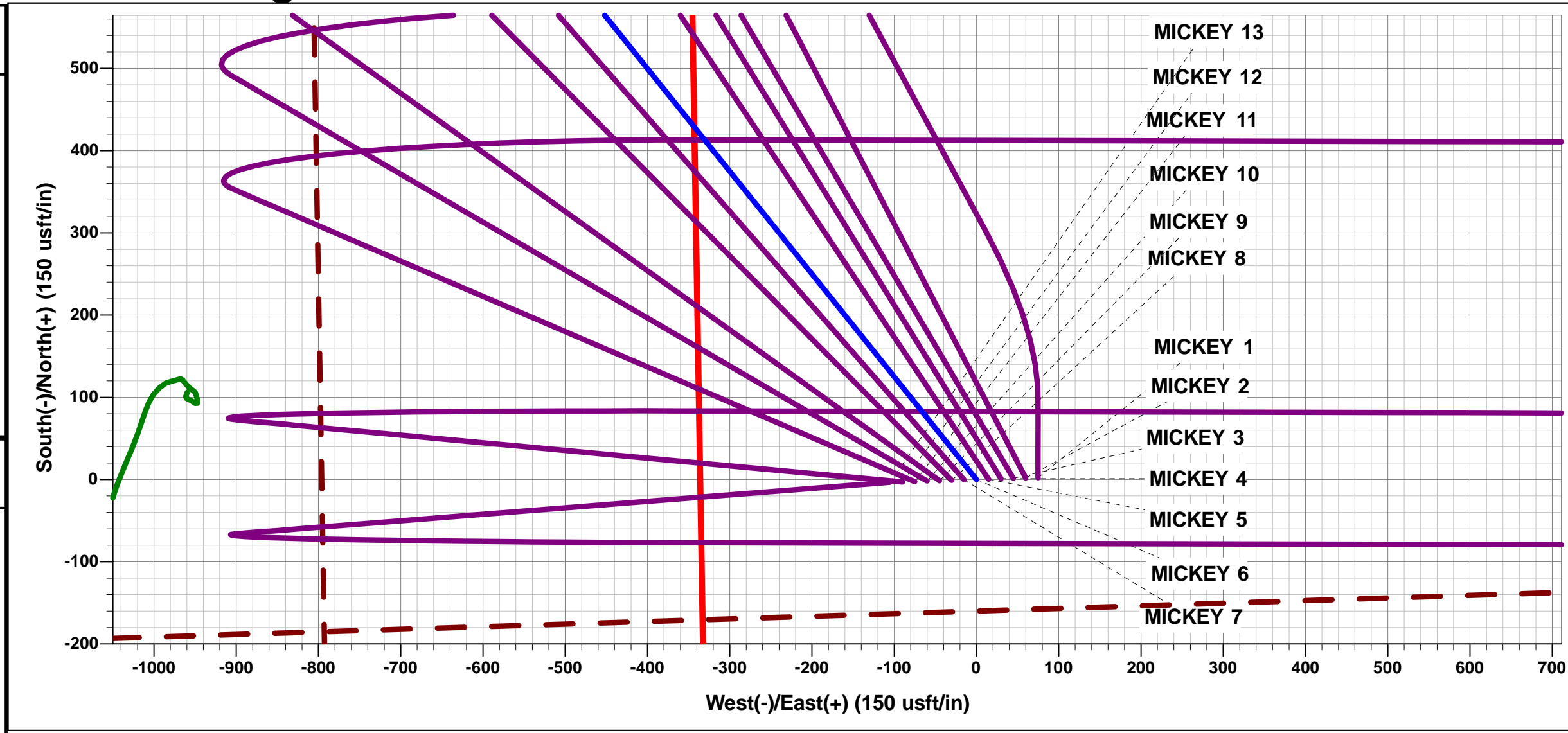




Project: WELD COUNTY, COLORADO (NAD 83)
Site: SW NE SEC. 5 T6N R67W 6th P.M.
Well: MICKEY 6
Wellbore: ORIGINAL WELLBORE
Design: PROPOSAL #2

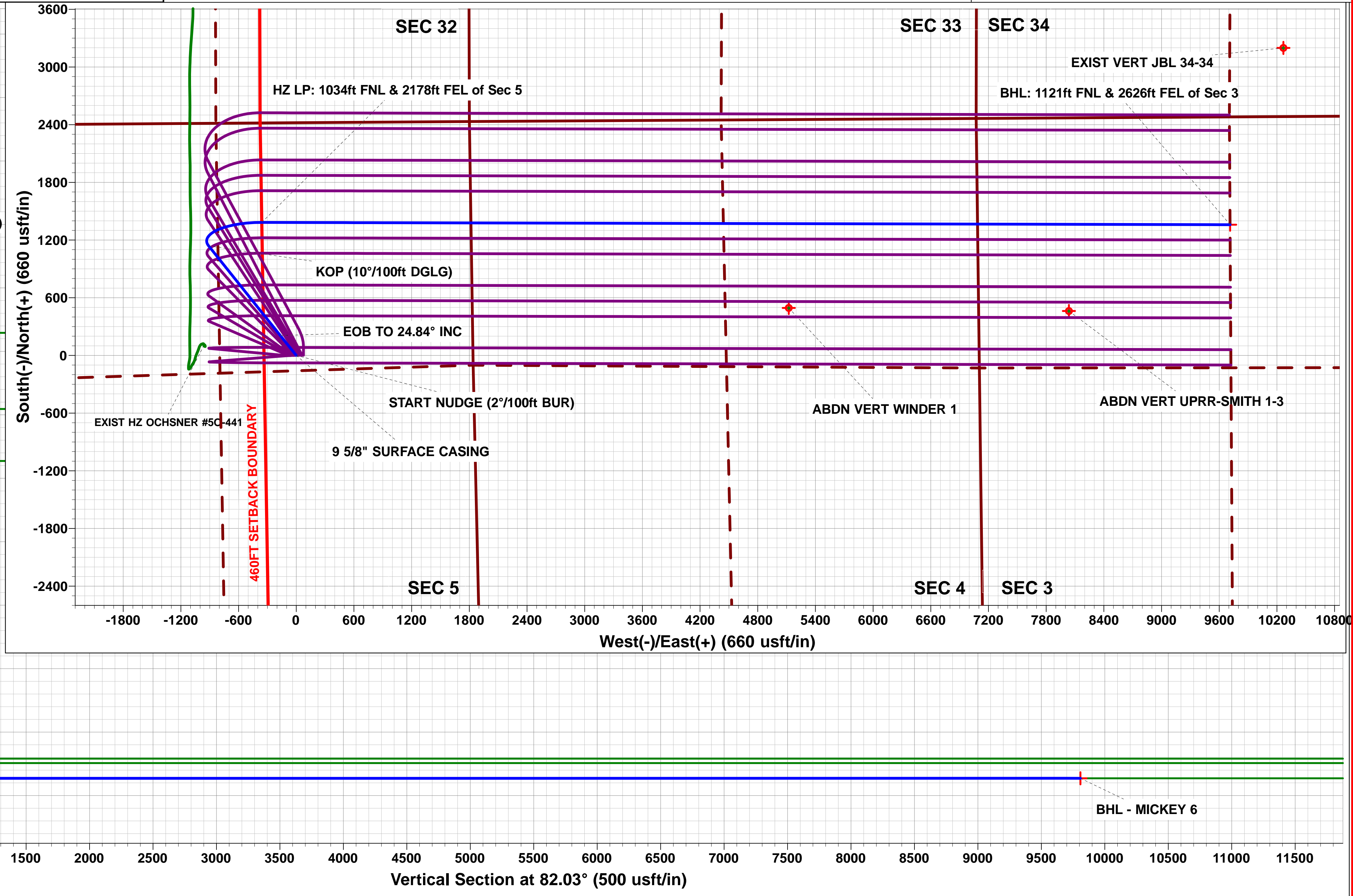
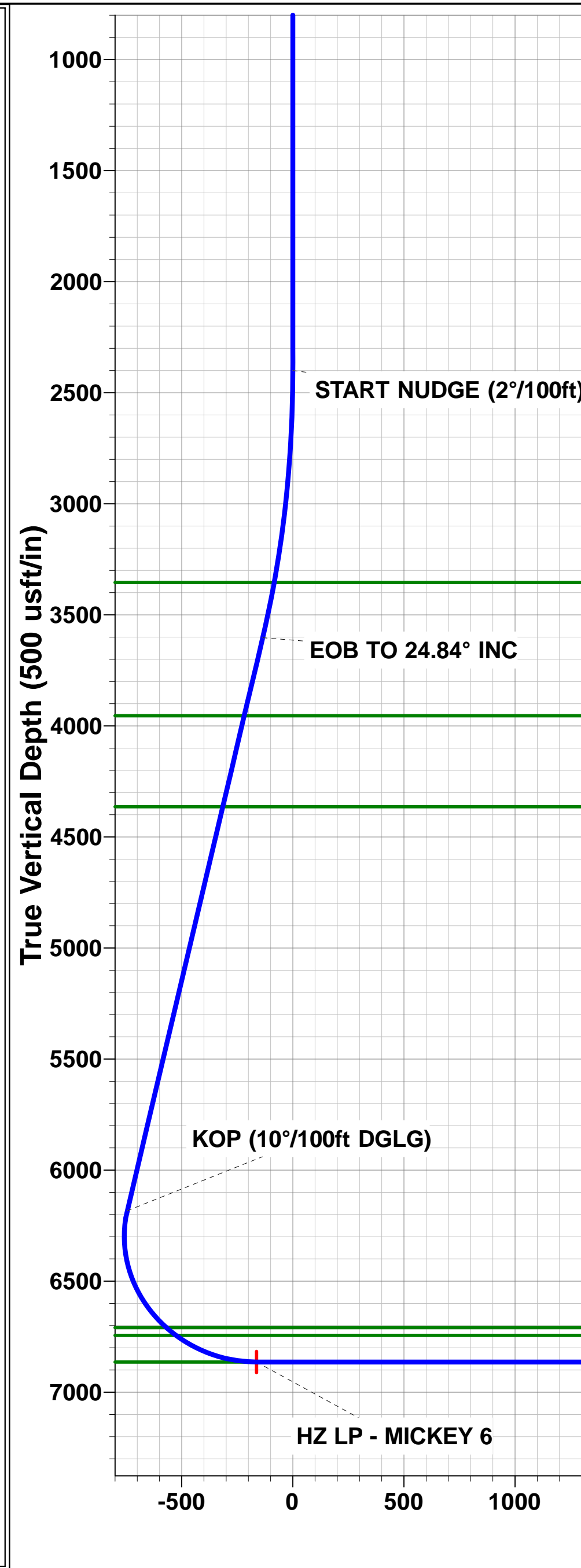
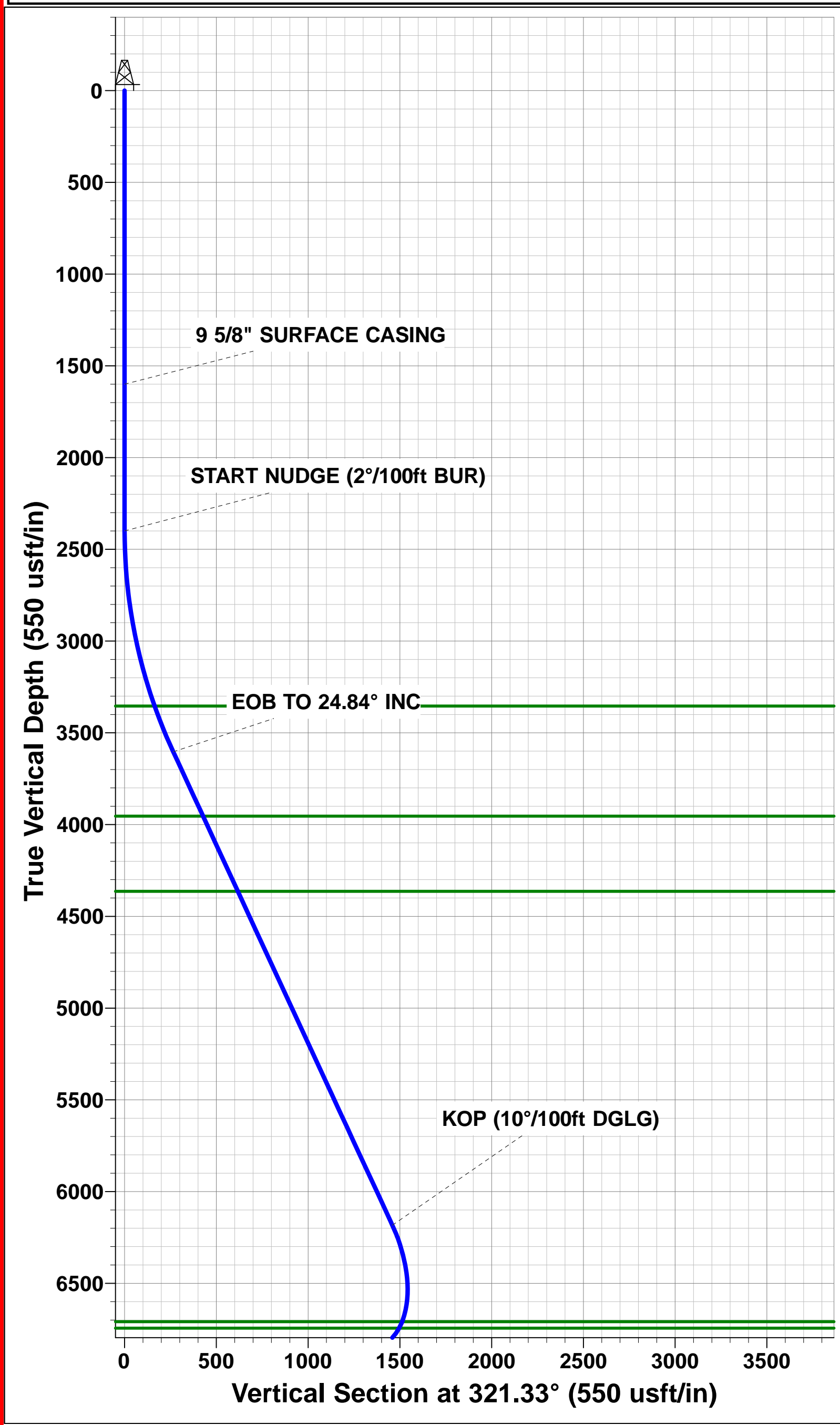
ANNOTATIONS								
TVD	MD	Inc	Azi	+N/-S	+E/-W	VSect	Dep	Annotation
0.0	0.0	0.00	0.00	0.0	0.0	0.0	0.0	SHL: 2420ft FNL & 1843ft FEL of Sec 5
1600.0	1600.0	0.00	0.00	0.0	0.0	0.0	0.0	9 5/8" SURFACE CASING
2400.0	2400.0	0.00	0.00	0.0	0.0	0.0	0.0	START NUDGE (2°/100ft BUR)
3603.3	3641.8	24.84	321.33	206.9	-165.6	-135.3	265.0	EOB TO 24.84° INC
6183.2	6484.6	24.84	321.33	1139.1	-911.7	-745.0	1459.0	KOP (10°/100ft DGLG)
6864.0	7537.2	90.00	90.13	1383.3	-358.4	-163.1	2155.5	HZ LP: 1034ft FNL & 2178ft FEL of Sec 5
6864.0	17609.0	90.00	90.14	1359.7	9713.4	9808.1	12227.3	BHL: 1121ft FNL & 2626ft FEL of Sec 3

WELLBORE TARGET DETAILS (LAT/LONG)					
Name	TVD	+N/-S	+E/-W	Latitude	Longitude
HZ LP - MICKEY 6	6864.0	1383.3	-358.4	40.520195	-104.915760
BHL - MICKEY 6	6864.0	1359.7	9713.4	40.520125	-104.879534



FORMATION TOP DETAILS		
TVDPath	MDPath	Formation
3354.0	3372.6	PARKMAN
3954.0	4028.3	SUSSEX
4364.0	4480.1	SHANNON
6709.0	7091.5	SHARON SPRINGS
6744.0	7147.4	NIOBRARA
6864.0	7537.2	NIO B TARGET

PROPOSED LOCAL COORDINATES	
SHL: 2420ft FNL & 1843ft FEL of Sec 5	
LP: 1034ft FNL & 2178ft FEL of Sec 5	
BHL: 1121ft FNL & 2626ft FEL of Sec 3	
Azimuths to True North Magnetic North: 8.39°	
Magnetic Field Strength: 52533.3snT Dip Angle: 66.95° Date: 11/08/2016 Model: IGRF2015	



Planning Report



Database:	EDM 5000.1 Single User Db	Local Co-ordinate Reference:	Well MICKEY 6
Company:	EXTRACTION OIL & GAS	TVD Reference:	KB-EST @ 4896.0usft
Project:	WELD COUNTY, COLORADO (NAD 83)	MD Reference:	KB-EST @ 4896.0usft
Site:	SW NE SEC. 5 T6N R67W 6th P.M.	North Reference:	True
Well:	MICKEY 6	Survey Calculation Method:	Minimum Curvature
Wellbore:	ORIGINAL WELLBORE		
Design:	PROPOSAL #2		

Project	WELD COUNTY, COLORADO (NAD 83)		
Map System:	US State Plane 1983	System Datum:	Mean Sea Level
Geo Datum:	North American Datum 1983		
Map Zone:	Colorado Northern Zone		Using geodetic scale factor

Site	SW NE SEC. 5 T6N R67W 6th P.M.		
Site Position:		Northing:	1,431,152.83 usft
From:	Lat/Long	Easting:	3,162,171.69 usft
Position Uncertainty:	0.0 usft	Slot Radius:	1.10000ft
		Latitude:	40.515451
		Longitude:	-104.916720
		Grid Convergence:	0.38 °

Well	MICKEY 6		
Well Position	+N/-S	344.9 usft	Northing:
	+E/-W	625.3 usft	Easting:
Position Uncertainty	0.0 usft	Wellhead Elevation:	usft
		Latitude:	40.516398
		Longitude:	-104.914471
		Ground Level:	4,880.0 usft

Wellbore	ORIGINAL WELLBORE				
Magnetics	Model Name	Sample Date	Declination (°)	Dip Angle (°)	Field Strength (nT)
	IGRF2015	11/08/2016	8.39	66.95	52,533

Design	PROPOSAL #2			
Audit Notes:				
Version:	Phase:	PROTOTYPE	Tie On Depth:	0.0
Vertical Section:	Depth From (TVD) (usft)	+N/-S (usft)	+E/-W (usft)	Direction (°)
	4.0	0.0	0.0	82.03

Plan Sections											
MD (usft)	Inc (°)	Azi (°)	Vertical Depth	SS (usft)	+N/-S (usft)	+E/-W (usft)	Dogleg Rate (°/100usf)	Build Rate (°/100usf)	Turn Rate (°/100usf)	TFO (°)	Target
0.0	0.00	0.00	0.0	-4,896.0	0.0	0.0	0.00	0.00	0.00	0.00	
2,400.0	0.00	0.00	2,400.0	-2,496.0	0.0	0.0	0.00	0.00	0.00	0.00	
3,641.8	24.84	321.33	3,603.3	-1,292.7	206.9	-165.6	2.00	2.00	0.00	321.33	
6,484.6	24.84	321.33	6,183.2	1,287.2	1,139.1	-911.7	0.00	0.00	0.00	0.00	
7,537.2	90.00	90.13	6,864.0	1,968.0	1,383.3	-358.4	10.00	6.19	12.24	126.12	HZ LP - MICKEY 6
17,609.0	90.00	90.14	6,864.0	1,968.0	1,359.7	9,713.4	0.00	0.00	0.00	90.00	BHL - MICKEY 6

Database:	EDM 5000.1 Single User Db	Local Co-ordinate Reference:	Well MICKEY 6
Company:	EXTRACTION OIL & GAS	TVD Reference:	KB-EST @ 4896.0usft
Project:	WELD COUNTY, COLORADO (NAD 83)	MD Reference:	KB-EST @ 4896.0usft
Site:	SW NE SEC. 5 T6N R67W 6th P.M.	North Reference:	True
Well:	MICKEY 6	Survey Calculation Method:	Minimum Curvature
Wellbore:	ORIGINAL WELLBORE		
Design:	PROPOSAL #2		

Planned Survey

MD (usft)	Inc (°)	Azi (°)	TVD (usft)	SS (usft)	+N/-S (usft)	+E/-W (usft)	Vertical Section (usft)	Dogleg Rate (°/100usft)	Build Rate (°/100usft)	Turn Rate (°/100usft)
SHL: 2420ft FNL & 1843ft FEL of Sec 5										
0.0	0.00	0.00	0.0	4,896.00	0.0	0.0	0.0	0.00	0.00	0.00
100.0	0.00	0.00	100.0	4,796.00	0.0	0.0	0.0	0.00	0.00	0.00
200.0	0.00	0.00	200.0	4,696.00	0.0	0.0	0.0	0.00	0.00	0.00
300.0	0.00	0.00	300.0	4,596.00	0.0	0.0	0.0	0.00	0.00	0.00
400.0	0.00	0.00	400.0	4,496.00	0.0	0.0	0.0	0.00	0.00	0.00
500.0	0.00	0.00	500.0	4,396.00	0.0	0.0	0.0	0.00	0.00	0.00
600.0	0.00	0.00	600.0	4,296.00	0.0	0.0	0.0	0.00	0.00	0.00
700.0	0.00	0.00	700.0	4,196.00	0.0	0.0	0.0	0.00	0.00	0.00
800.0	0.00	0.00	800.0	4,096.00	0.0	0.0	0.0	0.00	0.00	0.00
900.0	0.00	0.00	900.0	3,996.00	0.0	0.0	0.0	0.00	0.00	0.00
1,000.0	0.00	0.00	1,000.0	3,896.00	0.0	0.0	0.0	0.00	0.00	0.00
1,100.0	0.00	0.00	1,100.0	3,796.00	0.0	0.0	0.0	0.00	0.00	0.00
1,200.0	0.00	0.00	1,200.0	3,696.00	0.0	0.0	0.0	0.00	0.00	0.00
1,300.0	0.00	0.00	1,300.0	3,596.00	0.0	0.0	0.0	0.00	0.00	0.00
1,400.0	0.00	0.00	1,400.0	3,496.00	0.0	0.0	0.0	0.00	0.00	0.00
1,500.0	0.00	0.00	1,500.0	3,396.00	0.0	0.0	0.0	0.00	0.00	0.00
9 5/8" SURFACE CASING										
1,600.0	0.00	0.00	1,600.0	3,296.00	0.0	0.0	0.0	0.00	0.00	0.00
1,700.0	0.00	0.00	1,700.0	3,196.00	0.0	0.0	0.0	0.00	0.00	0.00
1,800.0	0.00	0.00	1,800.0	3,096.00	0.0	0.0	0.0	0.00	0.00	0.00
1,900.0	0.00	0.00	1,900.0	2,996.00	0.0	0.0	0.0	0.00	0.00	0.00
2,000.0	0.00	0.00	2,000.0	2,896.00	0.0	0.0	0.0	0.00	0.00	0.00
2,100.0	0.00	0.00	2,100.0	2,796.00	0.0	0.0	0.0	0.00	0.00	0.00
2,200.0	0.00	0.00	2,200.0	2,696.00	0.0	0.0	0.0	0.00	0.00	0.00
2,300.0	0.00	0.00	2,300.0	2,596.00	0.0	0.0	0.0	0.00	0.00	0.00
START NUDGE (2°/100ft BUR)										
2,400.0	0.00	0.00	2,400.0	2,496.00	0.0	0.0	0.0	0.00	0.00	0.00
2,500.0	2.00	321.33	2,500.0	2,396.02	1.4	-1.1	-0.9	2.00	2.00	0.00
2,600.0	4.00	321.33	2,599.8	2,296.16	5.4	-4.4	-3.6	2.00	2.00	0.00
2,700.0	6.00	321.33	2,699.5	2,196.55	12.3	-9.8	-8.0	2.00	2.00	0.00
2,800.0	8.00	321.33	2,798.7	2,097.30	21.8	-17.4	-14.2	2.00	2.00	0.00
2,900.0	10.00	321.33	2,897.5	1,998.53	34.0	-27.2	-22.2	2.00	2.00	0.00
3,000.0	12.00	321.33	2,995.6	1,900.38	48.9	-39.1	-32.0	2.00	2.00	0.00
3,100.0	14.00	321.33	3,093.1	1,802.94	66.4	-53.2	-43.5	2.00	2.00	0.00
3,200.0	16.00	321.33	3,189.6	1,706.36	86.6	-69.3	-56.7	2.00	2.00	0.00
3,300.0	18.00	321.33	3,285.3	1,610.73	109.5	-87.6	-71.6	2.00	2.00	0.00
PARKMAN										
3,372.6	19.45	321.33	3,354.0	1,542.00	127.7	-102.2	-83.5	2.00	2.00	0.00
3,400.0	20.00	321.33	3,379.8	1,516.18	134.9	-108.0	-88.2	2.00	2.00	0.00
3,500.0	22.00	321.33	3,473.2	1,422.83	162.9	-130.4	-106.5	2.00	2.00	0.00
3,600.0	24.00	321.33	3,565.2	1,330.79	193.4	-154.8	-126.5	2.00	2.00	0.00
EOB TO 24.84° INC										
3,641.8	24.84	321.33	3,603.3	1,292.72	206.9	-165.6	-135.3	2.00	2.00	0.00
3,700.0	24.84	321.33	3,656.1	1,239.91	225.9	-180.8	-147.8	0.00	0.00	0.00
3,800.0	24.84	321.33	3,746.8	1,149.16	258.7	-207.1	-169.2	0.00	0.00	0.00
3,900.0	24.84	321.33	3,837.6	1,058.40	291.5	-233.3	-190.7	0.00	0.00	0.00
4,000.0	24.84	321.33	3,928.3	967.65	324.3	-259.6	-212.1	0.00	0.00	0.00
SUSSEX										
4,028.3	24.84	321.33	3,954.0	942.00	333.6	-267.0	-218.2	0.00	0.00	0.00
4,100.0	24.84	321.33	4,019.1	876.90	357.1	-285.8	-233.6	0.00	0.00	0.00
4,200.0	24.84	321.33	4,109.9	786.15	389.9	-312.1	-255.0	0.00	0.00	0.00
4,300.0	24.84	321.33	4,200.6	695.40	422.7	-338.3	-276.5	0.00	0.00	0.00

Planning Report



Database:	EDM 5000.1 Single User Db	Local Co-ordinate Reference:	Well MICKEY 6
Company:	EXTRACTION OIL & GAS	TVD Reference:	KB-EST @ 4896.0usft
Project:	WELD COUNTY, COLORADO (NAD 83)	MD Reference:	KB-EST @ 4896.0usft
Site:	SW NE SEC. 5 T6N R67W 6th P.M.	North Reference:	True
Well:	MICKEY 6	Survey Calculation Method:	Minimum Curvature
Wellbore:	ORIGINAL WELLBORE		
Design:	PROPOSAL #2		

Planned Survey										
MD (usft)	Inc (°)	Azi (°)	TVD (usft)	SS (usft)	+N/-S (usft)	+E/-W (usft)	Vertical Section (usft)	Dogleg Rate (°/100usft)	Build Rate (°/100usft)	Turn Rate (°/100usft)
4,400.0	24.84	321.33	4,291.4	604.65	455.5	-364.6	-297.9	0.00	0.00	0.00
SHANNON										
4,480.1	24.84	321.33	4,364.0	532.00	481.7	-385.6	-315.1	0.00	0.00	0.00
4,500.0	24.84	321.33	4,382.1	513.90	488.3	-390.8	-319.3	0.00	0.00	0.00
4,600.0	24.84	321.33	4,472.9	423.14	521.1	-417.1	-340.8	0.00	0.00	0.00
4,700.0	24.84	321.33	4,563.6	332.39	553.9	-443.3	-362.2	0.00	0.00	0.00
4,800.0	24.84	321.33	4,654.4	241.64	586.6	-469.6	-383.7	0.00	0.00	0.00
4,900.0	24.84	321.33	4,745.1	150.89	619.4	-495.8	-405.1	0.00	0.00	0.00
5,000.0	24.84	321.33	4,835.9	60.14	652.2	-522.0	-426.6	0.00	0.00	0.00
5,100.0	24.84	321.33	4,926.6	-30.61	685.0	-548.3	-448.0	0.00	0.00	0.00
5,200.0	24.84	321.33	5,017.4	-121.36	717.8	-574.5	-469.5	0.00	0.00	0.00
5,300.0	24.84	321.33	5,108.1	-212.12	750.6	-600.8	-490.9	0.00	0.00	0.00
5,400.0	24.84	321.33	5,198.9	-302.87	783.4	-627.0	-512.4	0.00	0.00	0.00
5,500.0	24.84	321.33	5,289.6	-393.62	816.2	-653.3	-533.8	0.00	0.00	0.00
5,600.0	24.84	321.33	5,380.4	-484.37	849.0	-679.5	-555.3	0.00	0.00	0.00
5,700.0	24.84	321.33	5,471.1	-575.12	881.8	-705.8	-576.7	0.00	0.00	0.00
5,800.0	24.84	321.33	5,561.9	-665.87	914.6	-732.0	-598.2	0.00	0.00	0.00
5,900.0	24.84	321.33	5,652.6	-756.63	947.4	-758.3	-619.6	0.00	0.00	0.00
6,000.0	24.84	321.33	5,743.4	-847.38	980.1	-784.5	-641.0	0.00	0.00	0.00
6,100.0	24.84	321.33	5,834.1	-938.13	1,012.9	-810.8	-662.5	0.00	0.00	0.00
6,200.0	24.84	321.33	5,924.9	-1,028.88	1,045.7	-837.0	-683.9	0.00	0.00	0.00
6,300.0	24.84	321.33	6,015.6	-1,119.63	1,078.5	-863.2	-705.4	0.00	0.00	0.00
6,400.0	24.84	321.33	6,106.4	-1,210.38	1,111.3	-889.5	-726.8	0.00	0.00	0.00
KOP (10°/100ft DGLG)										
6,484.6	24.84	321.33	6,183.2	-1,287.16	1,139.1	-911.7	-745.0	0.00	0.00	0.00
6,500.0	23.96	324.39	6,197.2	-1,301.18	1,144.1	-915.5	-748.1	10.00	-5.70	19.90
6,600.0	20.16	349.28	6,290.0	-1,394.05	1,177.7	-930.6	-758.4	10.00	-3.79	24.89
6,700.0	20.76	18.10	6,384.0	-1,487.97	1,211.5	-928.3	-751.4	10.00	0.60	28.82
6,800.0	25.45	40.85	6,476.1	-1,580.11	1,244.7	-908.7	-727.4	10.00	4.68	22.75
6,900.0	32.49	55.64	6,563.7	-1,667.65	1,276.2	-872.4	-687.0	10.00	7.04	14.79
7,000.0	40.68	65.33	6,643.9	-1,747.95	1,305.0	-820.4	-631.6	10.00	8.19	9.69
SHARON SPRINGS										
7,091.5	48.69	71.65	6,709.0	-1,813.00	1,328.4	-760.6	-569.1	10.00	8.75	6.91
7,100.0	49.45	72.16	6,714.5	-1,818.55	1,330.3	-754.5	-562.8	10.00	8.93	5.94
NIOBRARA										
7,147.4	53.72	74.78	6,744.0	-1,848.00	1,340.9	-718.9	-526.1	10.00	9.01	5.53
7,200.0	58.52	77.37	6,773.3	-1,877.32	1,351.4	-676.5	-482.6	10.00	9.13	4.93
7,300.0	67.76	81.65	6,818.5	-1,922.46	1,367.4	-588.9	-393.6	10.00	9.25	4.28
7,400.0	77.11	85.40	6,848.6	-1,952.62	1,378.1	-494.3	-298.5	10.00	9.34	3.74
7,500.0	86.50	88.87	6,862.9	-1,966.86	1,383.0	-395.6	-200.0	10.00	9.39	3.47
HZ LP: 1034ft FNL & 2178ft FEL of Sec 5 - NIO B TARGET										
7,537.2	90.00	90.13	6,864.0	-1,968.00	1,383.3	-358.4	-163.1	10.00	9.41	3.40
7,600.0	90.00	90.13	6,864.0	-1,968.00	1,383.2	-295.6	-101.0	0.00	0.00	0.00
7,700.0	90.00	90.13	6,864.0	-1,968.00	1,383.0	-195.6	-2.0	0.00	0.00	0.00
7,800.0	90.00	90.13	6,864.0	-1,968.00	1,382.7	-95.6	97.0	0.00	0.00	0.00
7,900.0	90.00	90.13	6,864.0	-1,968.00	1,382.5	4.4	196.0	0.00	0.00	0.00
8,000.0	90.00	90.13	6,864.0	-1,968.00	1,382.3	104.4	295.0	0.00	0.00	0.00
8,100.0	90.00	90.13	6,864.0	-1,968.00	1,382.0	204.4	394.0	0.00	0.00	0.00
8,200.0	90.00	90.13	6,864.0	-1,968.00	1,381.8	304.4	493.0	0.00	0.00	0.00
8,300.0	90.00	90.13	6,864.0	-1,968.00	1,381.6	404.4	592.0	0.00	0.00	0.00
8,400.0	90.00	90.13	6,864.0	-1,968.00	1,381.3	504.4	691.0	0.00	0.00	0.00
8,500.0	90.00	90.13	6,864.0	-1,968.00	1,381.1	604.4	790.0	0.00	0.00	0.00
8,600.0	90.00	90.13	6,864.0	-1,968.00	1,380.9	704.4	889.0	0.00	0.00	0.00

Planning Report



Database:	EDM 5000.1 Single User Db	Local Co-ordinate Reference:	Well MICKEY 6
Company:	EXTRACTION OIL & GAS	TVD Reference:	KB-EST @ 4896.0usft
Project:	WELD COUNTY, COLORADO (NAD 83)	MD Reference:	KB-EST @ 4896.0usft
Site:	SW NE SEC. 5 T6N R67W 6th P.M.	North Reference:	True
Well:	MICKEY 6	Survey Calculation Method:	Minimum Curvature
Wellbore:	ORIGINAL WELLBORE		
Design:	PROPOSAL #2		

Planned Survey										
MD (usft)	Inc (°)	Azi (°)	TVD (usft)	SS (usft)	+N/-S (usft)	+E/-W (usft)	Vertical Section (usft)	Dogleg Rate (°/100usft)	Build Rate (°/100usft)	Turn Rate (°/100usft)
8,700.0	90.00	90.13	6,864.0	-1,968.00	1,380.6	804.4	988.0	0.00	0.00	0.00
8,800.0	90.00	90.13	6,864.0	-1,968.00	1,380.4	904.4	1,087.0	0.00	0.00	0.00
8,900.0	90.00	90.13	6,864.0	-1,968.00	1,380.2	1,004.4	1,186.0	0.00	0.00	0.00
9,000.0	90.00	90.13	6,864.0	-1,968.00	1,379.9	1,104.4	1,285.1	0.00	0.00	0.00
9,100.0	90.00	90.13	6,864.0	-1,968.00	1,379.7	1,204.4	1,384.1	0.00	0.00	0.00
9,200.0	90.00	90.13	6,864.0	-1,968.00	1,379.5	1,304.4	1,483.1	0.00	0.00	0.00
9,300.0	90.00	90.13	6,864.0	-1,968.00	1,379.2	1,404.4	1,582.1	0.00	0.00	0.00
9,400.0	90.00	90.13	6,864.0	-1,968.00	1,379.0	1,504.4	1,681.1	0.00	0.00	0.00
9,500.0	90.00	90.13	6,864.0	-1,968.00	1,378.8	1,604.4	1,780.1	0.00	0.00	0.00
9,600.0	90.00	90.13	6,864.0	-1,968.00	1,378.5	1,704.4	1,879.1	0.00	0.00	0.00
9,700.0	90.00	90.13	6,864.0	-1,968.00	1,378.3	1,804.4	1,978.1	0.00	0.00	0.00
9,800.0	90.00	90.13	6,864.0	-1,968.00	1,378.1	1,904.4	2,077.1	0.00	0.00	0.00
9,900.0	90.00	90.13	6,864.0	-1,968.00	1,377.8	2,004.4	2,176.1	0.00	0.00	0.00
10,000.0	90.00	90.13	6,864.0	-1,968.00	1,377.6	2,104.4	2,275.1	0.00	0.00	0.00
10,100.0	90.00	90.13	6,864.0	-1,968.00	1,377.4	2,204.4	2,374.1	0.00	0.00	0.00
10,200.0	90.00	90.13	6,864.0	-1,968.00	1,377.1	2,304.4	2,473.1	0.00	0.00	0.00
10,300.0	90.00	90.13	6,864.0	-1,968.00	1,376.9	2,404.4	2,572.1	0.00	0.00	0.00
10,400.0	90.00	90.13	6,864.0	-1,968.00	1,376.7	2,504.4	2,671.1	0.00	0.00	0.00
10,500.0	90.00	90.13	6,864.0	-1,968.00	1,376.4	2,604.4	2,770.1	0.00	0.00	0.00
10,600.0	90.00	90.13	6,864.0	-1,968.00	1,376.2	2,704.4	2,869.1	0.00	0.00	0.00
10,700.0	90.00	90.13	6,864.0	-1,968.00	1,376.0	2,804.4	2,968.1	0.00	0.00	0.00
10,800.0	90.00	90.13	6,864.0	-1,968.00	1,375.7	2,904.4	3,067.1	0.00	0.00	0.00
10,900.0	90.00	90.13	6,864.0	-1,968.00	1,375.5	3,004.4	3,166.1	0.00	0.00	0.00
11,000.0	90.00	90.13	6,864.0	-1,968.00	1,375.3	3,104.4	3,265.1	0.00	0.00	0.00
11,100.0	90.00	90.13	6,864.0	-1,968.00	1,375.0	3,204.4	3,364.1	0.00	0.00	0.00
11,200.0	90.00	90.13	6,864.0	-1,968.00	1,374.8	3,304.4	3,463.1	0.00	0.00	0.00
11,300.0	90.00	90.13	6,864.0	-1,968.00	1,374.6	3,404.4	3,562.1	0.00	0.00	0.00
11,400.0	90.00	90.13	6,864.0	-1,968.00	1,374.3	3,504.4	3,661.1	0.00	0.00	0.00
11,500.0	90.00	90.13	6,864.0	-1,968.00	1,374.1	3,604.4	3,760.1	0.00	0.00	0.00
11,600.0	90.00	90.13	6,864.0	-1,968.00	1,373.9	3,704.4	3,859.1	0.00	0.00	0.00
11,700.0	90.00	90.13	6,864.0	-1,968.00	1,373.6	3,804.4	3,958.1	0.00	0.00	0.00
11,800.0	90.00	90.13	6,864.0	-1,968.00	1,373.4	3,904.4	4,057.1	0.00	0.00	0.00
11,900.0	90.00	90.13	6,864.0	-1,968.00	1,373.2	4,004.4	4,156.1	0.00	0.00	0.00
12,000.0	90.00	90.13	6,864.0	-1,968.00	1,372.9	4,104.4	4,255.1	0.00	0.00	0.00
12,100.0	90.00	90.13	6,864.0	-1,968.00	1,372.7	4,204.4	4,354.1	0.00	0.00	0.00
12,200.0	90.00	90.13	6,864.0	-1,968.00	1,372.5	4,304.4	4,453.1	0.00	0.00	0.00
12,300.0	90.00	90.13	6,864.0	-1,968.00	1,372.2	4,404.4	4,552.1	0.00	0.00	0.00
12,400.0	90.00	90.13	6,864.0	-1,968.00	1,372.0	4,504.4	4,651.1	0.00	0.00	0.00
12,500.0	90.00	90.13	6,864.0	-1,968.00	1,371.8	4,604.4	4,750.1	0.00	0.00	0.00
12,600.0	90.00	90.13	6,864.0	-1,968.00	1,371.5	4,704.4	4,849.1	0.00	0.00	0.00
12,700.0	90.00	90.13	6,864.0	-1,968.00	1,371.3	4,804.4	4,948.1	0.00	0.00	0.00
12,800.0	90.00	90.13	6,864.0	-1,968.00	1,371.1	4,904.4	5,047.1	0.00	0.00	0.00
12,900.0	90.00	90.13	6,864.0	-1,968.00	1,370.8	5,004.4	5,146.1	0.00	0.00	0.00
13,000.0	90.00	90.13	6,864.0	-1,968.00	1,370.6	5,104.4	5,245.1	0.00	0.00	0.00
13,100.0	90.00	90.13	6,864.0	-1,968.00	1,370.4	5,204.4	5,344.1	0.00	0.00	0.00
13,200.0	90.00	90.13	6,864.0	-1,968.00	1,370.1	5,304.4	5,443.1	0.00	0.00	0.00
13,300.0	90.00	90.13	6,864.0	-1,968.00	1,369.9	5,404.4	5,542.1	0.00	0.00	0.00
13,400.0	90.00	90.13	6,864.0	-1,968.00	1,369.6	5,504.4	5,641.1	0.00	0.00	0.00
13,500.0	90.00	90.13	6,864.0	-1,968.00	1,369.4	5,604.4	5,740.1	0.00	0.00	0.00
13,600.0	90.00	90.13	6,864.0	-1,968.00	1,369.2	5,704.4	5,839.1	0.00	0.00	0.00
13,700.0	90.00	90.13	6,864.0	-1,968.00	1,368.9	5,804.4	5,938.1	0.00	0.00	0.00
13,800.0	90.00	90.13	6,864.0	-1,968.00	1,368.7	5,904.4	6,037.1	0.00	0.00	0.00
13,900.0	90.00	90.13	6,864.0	-1,968.00	1,368.5	6,004.4	6,136.1	0.00	0.00	0.00
14,000.0	90.00	90.13	6,864.0	-1,968.00	1,368.2	6,104.4	6,235.1	0.00	0.00	0.00

Planning Report



Database:	EDM 5000.1 Single User Db	Local Co-ordinate Reference:	Well MICKEY 6
Company:	EXTRACTION OIL & GAS	TVD Reference:	KB-EST @ 4896.0usft
Project:	WELD COUNTY, COLORADO (NAD 83)	MD Reference:	KB-EST @ 4896.0usft
Site:	SW NE SEC. 5 T6N R67W 6th P.M.	North Reference:	True
Well:	MICKEY 6	Survey Calculation Method:	Minimum Curvature
Wellbore:	ORIGINAL WELLBORE		
Design:	PROPOSAL #2		

Planned Survey

MD (usft)	Inc (°)	Azi (°)	TVD (usft)	SS (usft)	+N/-S (usft)	+E/-W (usft)	Vertical Section (usft)	Dogleg Rate (°/100usft)	Build Rate (°/100usft)	Turn Rate (°/100usft)
14,100.0	90.00	90.13	6,864.0	-1,968.00	1,368.0	6,204.4	6,334.1	0.00	0.00	0.00
14,200.0	90.00	90.13	6,864.0	-1,968.00	1,367.8	6,304.4	6,433.1	0.00	0.00	0.00
14,300.0	90.00	90.13	6,864.0	-1,968.00	1,367.5	6,404.4	6,532.1	0.00	0.00	0.00
14,400.0	90.00	90.13	6,864.0	-1,968.00	1,367.3	6,504.4	6,631.1	0.00	0.00	0.00
14,500.0	90.00	90.13	6,864.0	-1,968.00	1,367.1	6,604.4	6,730.1	0.00	0.00	0.00
14,600.0	90.00	90.13	6,864.0	-1,968.00	1,366.8	6,704.4	6,829.1	0.00	0.00	0.00
14,700.0	90.00	90.13	6,864.0	-1,968.00	1,366.6	6,804.4	6,928.1	0.00	0.00	0.00
14,800.0	90.00	90.13	6,864.0	-1,968.00	1,366.4	6,904.4	7,027.1	0.00	0.00	0.00
14,900.0	90.00	90.13	6,864.0	-1,968.00	1,366.1	7,004.4	7,126.1	0.00	0.00	0.00
15,000.0	90.00	90.13	6,864.0	-1,968.00	1,365.9	7,104.4	7,225.2	0.00	0.00	0.00
15,100.0	90.00	90.13	6,864.0	-1,968.00	1,365.7	7,204.4	7,324.2	0.00	0.00	0.00
15,200.0	90.00	90.13	6,864.0	-1,968.00	1,365.4	7,304.4	7,423.2	0.00	0.00	0.00
15,300.0	90.00	90.13	6,864.0	-1,968.00	1,365.2	7,404.4	7,522.2	0.00	0.00	0.00
15,400.0	90.00	90.13	6,864.0	-1,968.00	1,364.9	7,504.4	7,621.2	0.00	0.00	0.00
15,500.0	90.00	90.13	6,864.0	-1,968.00	1,364.7	7,604.4	7,720.2	0.00	0.00	0.00
15,600.0	90.00	90.13	6,864.0	-1,968.00	1,364.5	7,704.4	7,819.2	0.00	0.00	0.00
15,700.0	90.00	90.13	6,864.0	-1,968.00	1,364.2	7,804.4	7,918.2	0.00	0.00	0.00
15,800.0	90.00	90.13	6,864.0	-1,968.00	1,364.0	7,904.4	8,017.2	0.00	0.00	0.00
15,900.0	90.00	90.14	6,864.0	-1,968.00	1,363.8	8,004.4	8,116.2	0.00	0.00	0.00
16,000.0	90.00	90.14	6,864.0	-1,968.00	1,363.5	8,104.4	8,215.2	0.00	0.00	0.00
16,100.0	90.00	90.14	6,864.0	-1,968.00	1,363.3	8,204.4	8,314.2	0.00	0.00	0.00
16,200.0	90.00	90.14	6,864.0	-1,968.00	1,363.1	8,304.4	8,413.2	0.00	0.00	0.00
16,300.0	90.00	90.14	6,864.0	-1,968.00	1,362.8	8,404.4	8,512.2	0.00	0.00	0.00
16,400.0	90.00	90.14	6,864.0	-1,968.00	1,362.6	8,504.4	8,611.2	0.00	0.00	0.00
16,500.0	90.00	90.14	6,864.0	-1,968.00	1,362.4	8,604.4	8,710.2	0.00	0.00	0.00
16,600.0	90.00	90.14	6,864.0	-1,968.00	1,362.1	8,704.4	8,809.2	0.00	0.00	0.00
16,700.0	90.00	90.14	6,864.0	-1,968.00	1,361.9	8,804.4	8,908.2	0.00	0.00	0.00
16,800.0	90.00	90.14	6,864.0	-1,968.00	1,361.6	8,904.4	9,007.2	0.00	0.00	0.00
16,900.0	90.00	90.14	6,864.0	-1,968.00	1,361.4	9,004.4	9,106.2	0.00	0.00	0.00
17,000.0	90.00	90.14	6,864.0	-1,968.00	1,361.2	9,104.4	9,205.2	0.00	0.00	0.00
17,100.0	90.00	90.14	6,864.0	-1,968.00	1,360.9	9,204.4	9,304.2	0.00	0.00	0.00
17,200.0	90.00	90.14	6,864.0	-1,968.00	1,360.7	9,304.4	9,403.2	0.00	0.00	0.00
17,300.0	90.00	90.14	6,864.0	-1,968.00	1,360.5	9,404.4	9,502.2	0.00	0.00	0.00
17,400.0	90.00	90.14	6,864.0	-1,968.00	1,360.2	9,504.4	9,601.2	0.00	0.00	0.00
17,500.0	90.00	90.14	6,864.0	-1,968.00	1,360.0	9,604.4	9,700.2	0.00	0.00	0.00
17,600.0	90.00	90.14	6,864.0	-1,968.00	1,359.8	9,704.4	9,799.2	0.00	0.00	0.00
BHL: 1121ft FNL & 2626ft FEL of Sec 3										
17,609.0	90.00	90.14	6,864.0	-1,968.00	1,359.7	9,713.4	9,808.1	0.00	0.00	0.00

Formations

MD (usft)	TVD (usft)	Name	Lithology	Dip (°)	Dip Direction (°)
3,372.6	3,354.0	PARKMAN			
4,028.3	3,954.0	SUSSEX			
4,480.1	4,364.0	SHANNON			
7,091.5	6,709.0	SHARON SPRINGS			
7,147.4	6,744.0	NIOBRARA			
7,537.2	6,864.0	NIO B TARGET			

Database:	EDM 5000.1 Single User Db	Local Co-ordinate Reference:	Well MICKEY 6
Company:	EXTRACTION OIL & GAS	TVD Reference:	KB-EST @ 4896.0usft
Project:	WELD COUNTY, COLORADO (NAD 83)	MD Reference:	KB-EST @ 4896.0usft
Site:	SW NE SEC. 5 T6N R67W 6th P.M.	North Reference:	True
Well:	MICKEY 6	Survey Calculation Method:	Minimum Curvature
Wellbore:	ORIGINAL WELLBORE		
Design:	PROPOSAL #2		

Plan Annotations

MD (usft)	TVD (usft)	Local Coordinates		Comment
		+N/-S (usft)	+E/-W (usft)	
0.0	0.0	0.0	0.0	SHL: 2420ft FNL & 1843ft FEL of Sec 5
1,600.0	1,600.0	0.0	0.0	9 5/8" SURFACE CASING
2,400.0	2,400.0	0.0	0.0	START NUDGE (2°/100ft BUR)
3,641.8	3,603.3	206.9	-165.6	EOB TO 24.84° INC
6,484.6	6,183.2	1,139.1	-911.7	KOP (10°/100ft DGLG)
7,537.2	6,864.0	1,383.3	-358.4	HZ LP: 1034ft FNL & 2178ft FEL of Sec 5
17,609.0	6,864.0	1,359.7	9,713.4	BHL: 1121ft FNL & 2626ft FEL of Sec 3