

# **EXTRACTION OIL & GAS**

**WELD COUNTY, COLORADO (NAD 83)**

**SW NE SEC. 5 T6N R67W 6th P.M.**

**MICKEY 5**

**ORIGINAL WELLBORE**

**07 October, 2016**

**Plan: PROPOSAL #2**

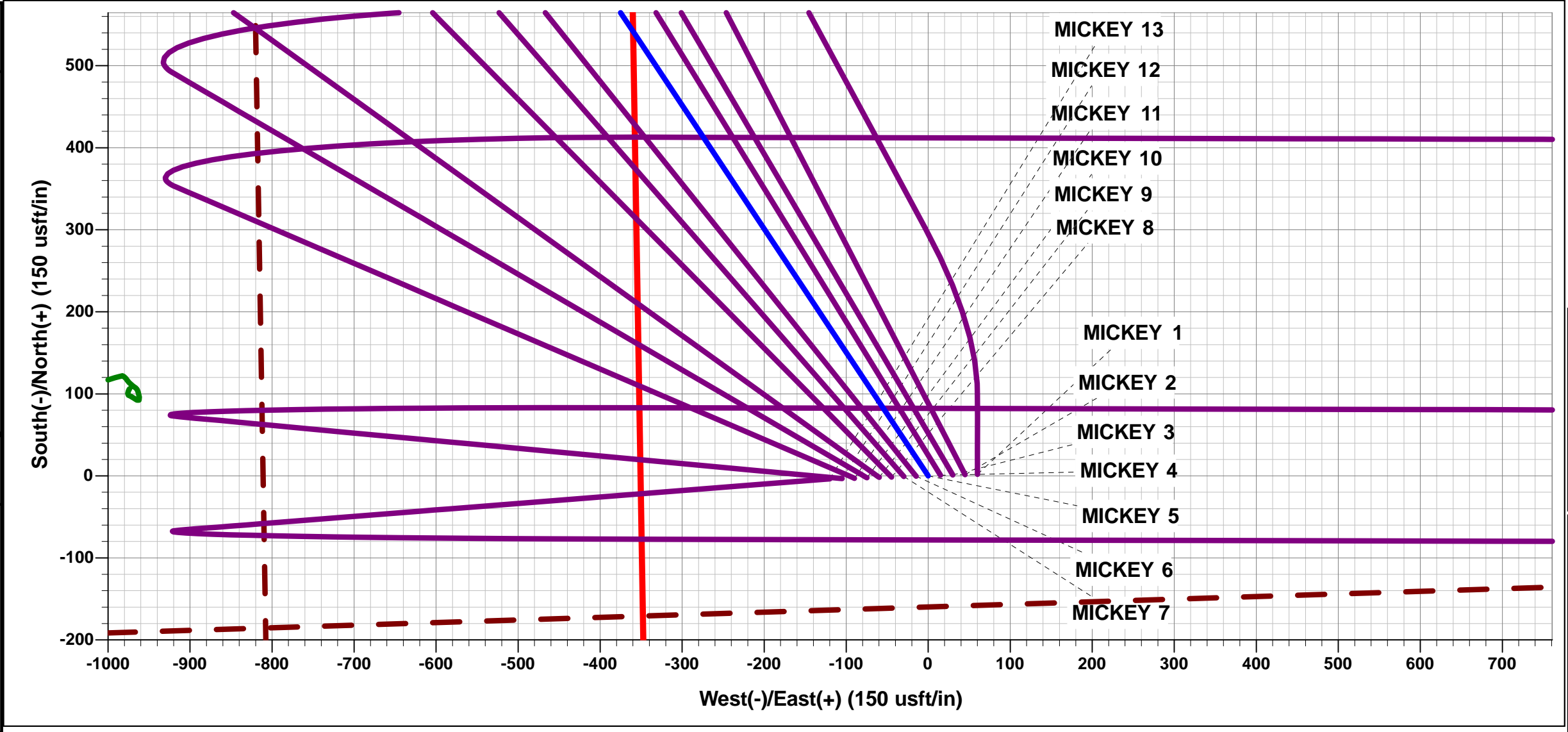




Project: WELD COUNTY, COLORADO (NAD 83)  
Site: SW NE SEC. 5 T6N R67W 6th P.M.  
Well: MICKEY 5  
Wellbore: ORIGINAL WELLBORE  
Design: PROPOSAL #2

ANNOTATIONS									
TVD	MD	Inc	Azi	+N/-S	+E/-W	VSect	Dep	Annotation	
0.0	0.0	0.00	0.00	0.0	0.0	0.0	0.0	SHL: 2420ft FNL & 1828ft FEL of Sec 5	
1600.0	1600.0	0.00	0.00	0.0	0.0	0.0	0.0	9 5/8" SURFACE CASING	
2500.0	2500.0	0.00	0.00	0.0	0.0	0.0	0.0	START NUDGE (2°/100ft BUR)	
3921.4	3987.3	29.75	326.41	314.5	-208.8	-151.8	377.5	EOB TO 29.75° INC	
6203.0	6615.2	29.75	326.41	1400.6	-930.2	-676.0	1681.4	KOP (10°/100ft DGLG)	
6863.0	7675.1	90.00	90.13	1713.0	-378.6	-79.0	2423.2	HZ LP: 704ft FNL & 2178ft FEL of Sec 5	
6863.0	17750.3	90.00	90.14	1689.4	9696.5	9842.6	12498.4	BHL: 791ft FNL & 2628ft FEL of Sec 3	

WELLBORE TARGET DETAILS (LAT/LONG)						
Name	TVD	+N/-S	+E/-W	Latitude	Longitude	
HZ LP - MICKEY 5	6863.0	1713.0	-378.7	40.521101	-104.915780	
BHL - MICKEY 5	6863.0	1689.4	9696.6	40.521031	-104.879541	



FORMATION TOP DETAILS		
TVDPath	MDPath	Formation
3353.0	3366.1	PARKMAN
3953.0	4023.7	SUSSEX
4363.0	4495.9	SHANNON
6708.0	7219.7	SHARON SPRINGS
6743.0	7276.9	NIOBRARA
6863.0	7675.1	NIO B TARGET

PROPOSED LOCAL COORDINATES		
SHL: 2420ft FNL & 1828ft FEL of Sec 5		
LP: 704ft FNL & 2178ft FEL of Sec 5		
BHL: 791ft FNL & 2628ft FEL of Sec 3		

T

M

8.39°

Magnetic North: 8.39°

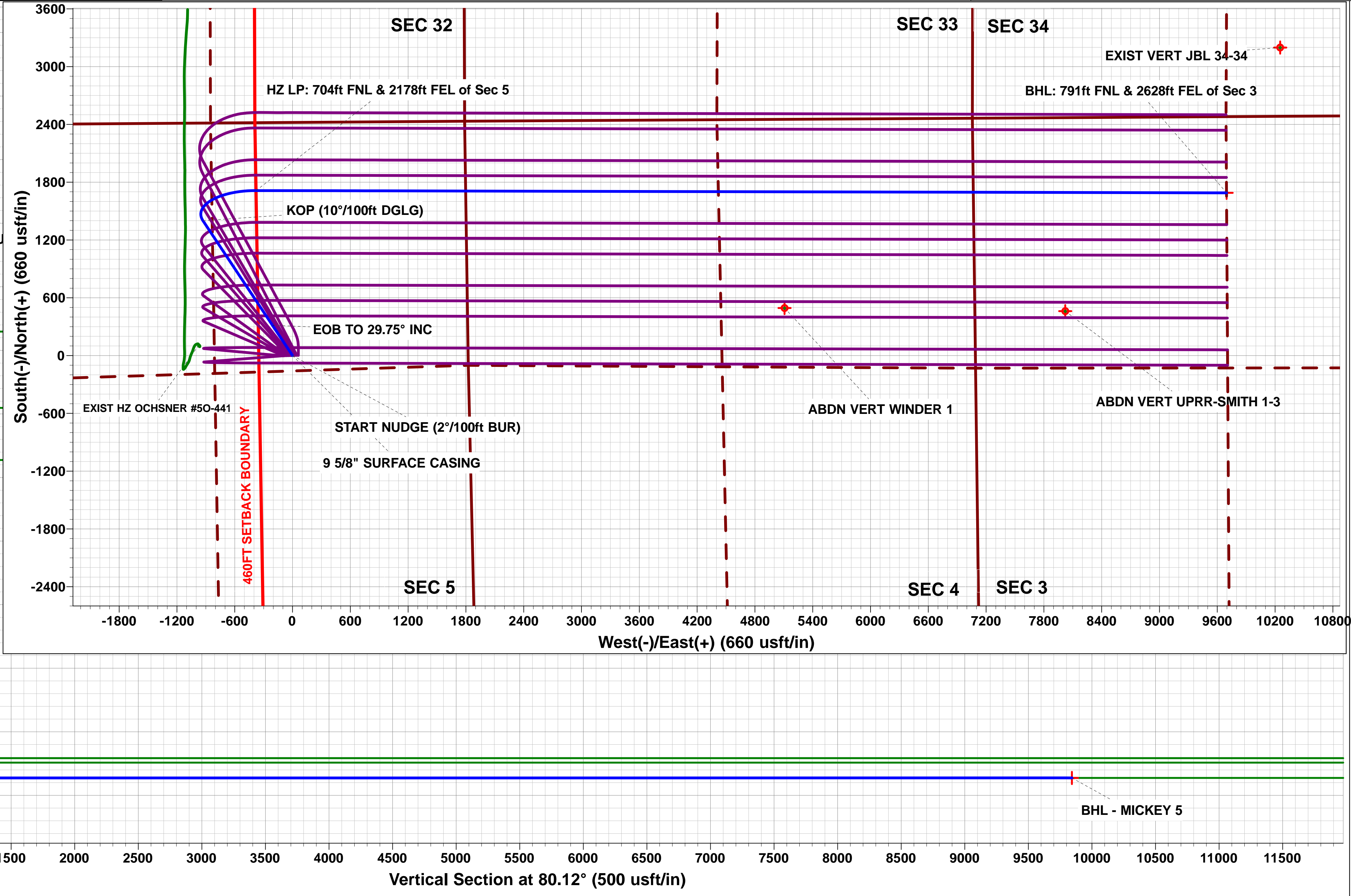
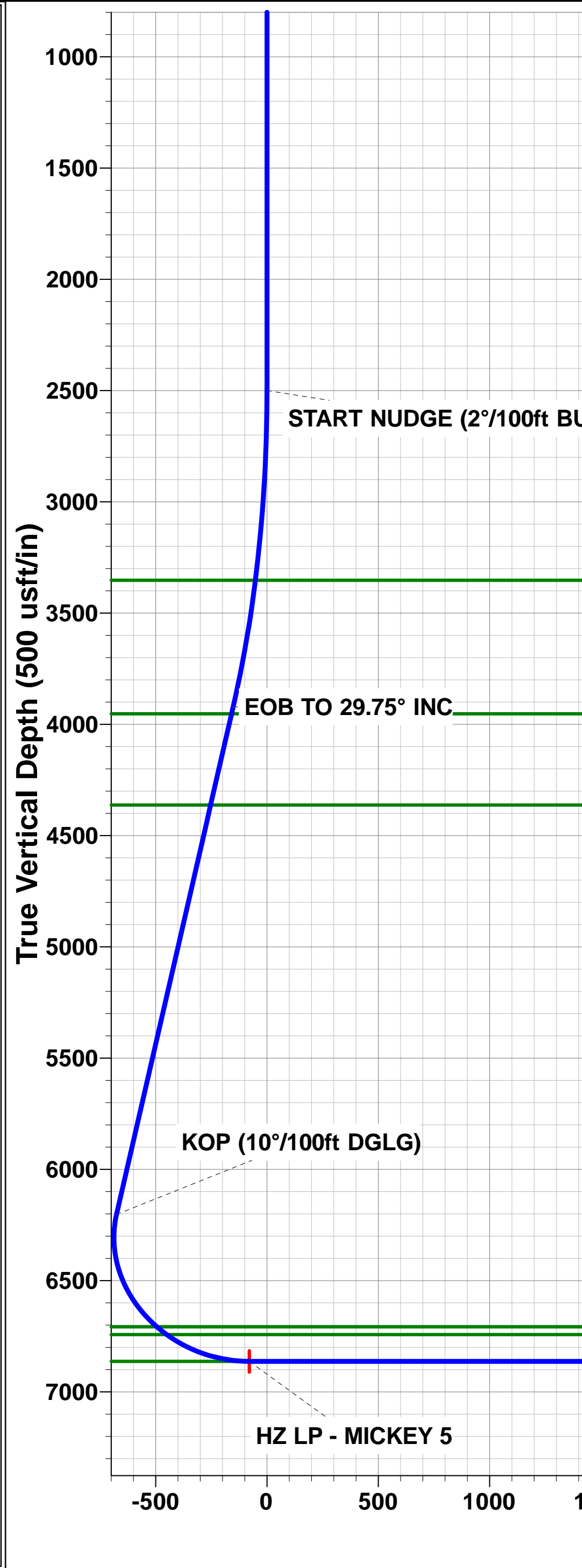
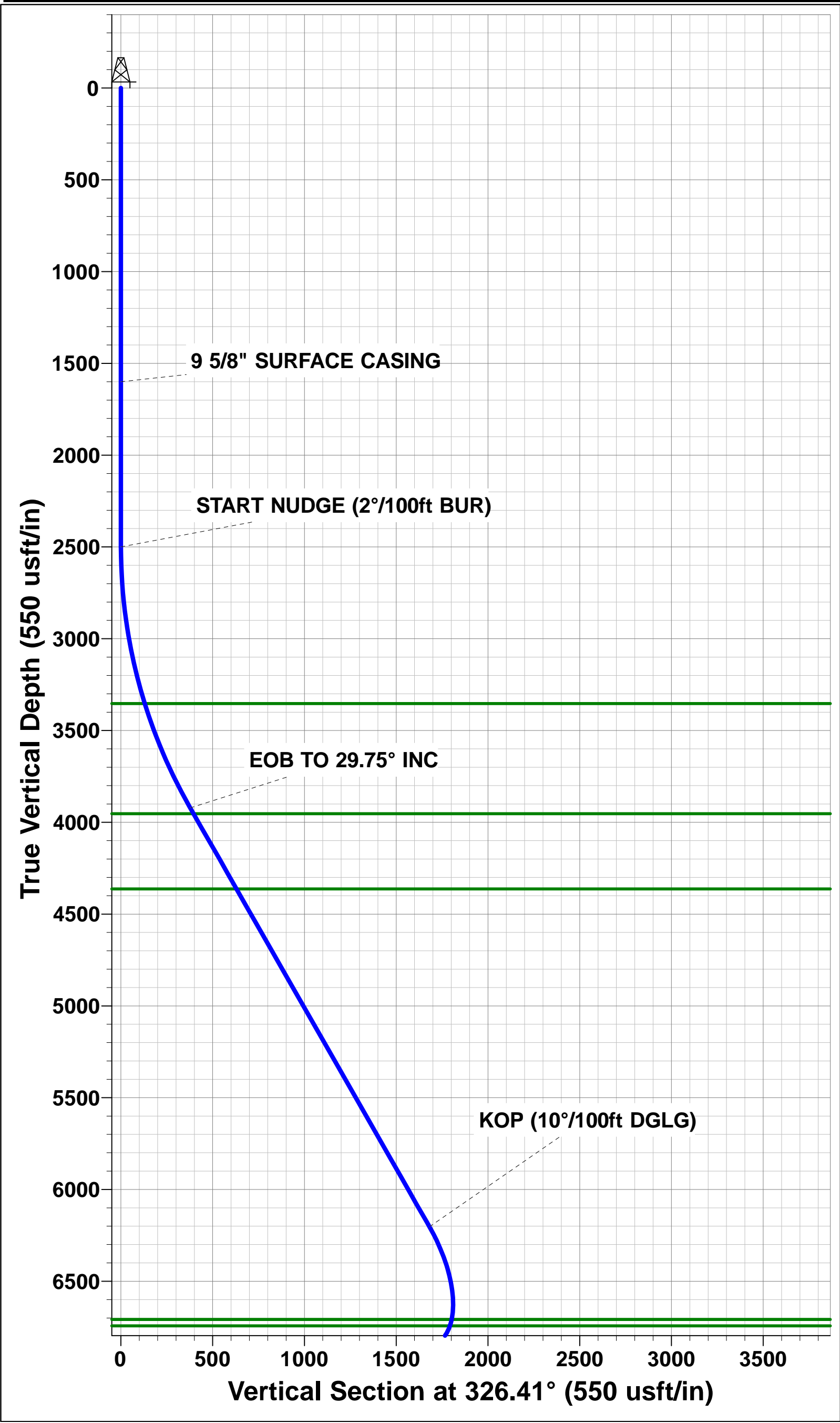
Magnetic Field

Strength: 52533.3snT

Dip Angle: 66.95°

Date: 11/08/2016

Model: IGRF2015



# Planning Report



<b>Database:</b>	EDM 5000.1 Single User Db	<b>Local Co-ordinate Reference:</b>	Well MICKEY 5
<b>Company:</b>	EXTRACTION OIL & GAS	<b>TVD Reference:</b>	KB-EST @ 4896.0usft
<b>Project:</b>	WELD COUNTY, COLORADO (NAD 83)	<b>MD Reference:</b>	KB-EST @ 4896.0usft
<b>Site:</b>	SW NE SEC. 5 T6N R67W 6th P.M.	<b>North Reference:</b>	True
<b>Well:</b>	MICKEY 5	<b>Survey Calculation Method:</b>	Minimum Curvature
<b>Wellbore:</b>	ORIGINAL WELLBORE		
<b>Design:</b>	PROPOSAL #2		

<b>Project</b>	WELD COUNTY, COLORADO (NAD 83)		
<b>Map System:</b>	US State Plane 1983	<b>System Datum:</b>	Mean Sea Level
<b>Geo Datum:</b>	North American Datum 1983		
<b>Map Zone:</b>	Colorado Northern Zone		Using geodetic scale factor

<b>Site</b>	SW NE SEC. 5 T6N R67W 6th P.M.		
<b>Site Position:</b>		<b>Northing:</b>	1,431,152.83 usft
<b>From:</b>	Lat/Long	<b>Easting:</b>	3,162,171.69 usft
<b>Position Uncertainty:</b>	0.0 usft	<b>Slot Radius:</b>	1.10000ft
		<b>Latitude:</b>	40.515451
		<b>Longitude:</b>	-104.916720
		<b>Grid Convergence:</b>	0.38 °

<b>Well</b>	MICKEY 5		
<b>Well Position</b>	<b>+N/-S</b>	345.3 usft	<b>Northing:</b> 1,431,502.32 usfi
	<b>+E/-W</b>	640.1 usft	<b>Easting:</b> 3,162,809.44 usfi
<b>Position Uncertainty</b>	0.0 usft	<b>Wellhead Elevation:</b>	usfi
		<b>Latitude:</b>	40.516399
		<b>Longitude:</b>	-104.914418
		<b>Ground Level:</b>	4,880.0 usft

<b>Wellbore</b>	ORIGINAL WELLBORE				
<b>Magnetics</b>	<b>Model Name</b>	<b>Sample Date</b>	<b>Declination (°)</b>	<b>Dip Angle (°)</b>	<b>Field Strength (nT)</b>
	IGRF2015	11/08/2016	8.39	66.95	52,533

<b>Design</b>	PROPOSAL #2			
<b>Audit Notes:</b>				
<b>Version:</b>	<b>Phase:</b>	PROTOTYPE	<b>Tie On Depth:</b>	0.0
<b>Vertical Section:</b>	<b>Depth From (TVD) (usft)</b>	<b>+N/-S (usft)</b>	<b>+E/-W (usft)</b>	<b>Direction (°)</b>
	3.0	0.0	0.0	80.12

<b>Plan Sections</b>											
MD (usft)	Inc (°)	Azi (°)	Vertical Depth	SS (usft)	+N/-S (usft)	+E/-W (usft)	Dogleg Rate (°/100usf)	Build Rate (°/100usf)	Turn Rate (°/100usf)	TFO (°)	Target
0.0	0.00	0.00	0.0	-4,896.0	0.0	0.0	0.00	0.00	0.00	0.00	
2,500.0	0.00	0.00	2,500.0	-2,396.0	0.0	0.0	0.00	0.00	0.00	0.00	
3,987.3	29.75	326.41	3,921.4	-974.6	314.5	-208.8	2.00	2.00	0.00	326.41	
6,615.2	29.75	326.41	6,203.0	1,307.0	1,400.6	-930.2	0.00	0.00	0.00	0.00	
7,675.1	90.00	90.13	6,863.0	1,967.0	1,713.0	-378.7	10.00	5.68	11.67	120.09	HZ LP - MICKEY 5
17,750.3	90.00	90.14	6,863.0	1,967.0	1,689.4	9,696.6	0.00	0.00	0.00	90.00	BHL - MICKEY 5

<b>Database:</b>	EDM 5000.1 Single User Db	<b>Local Co-ordinate Reference:</b>	Well MICKEY 5
<b>Company:</b>	EXTRACTION OIL & GAS	<b>TVD Reference:</b>	KB-EST @ 4896.0usft
<b>Project:</b>	WELD COUNTY, COLORADO (NAD 83)	<b>MD Reference:</b>	KB-EST @ 4896.0usft
<b>Site:</b>	SW NE SEC. 5 T6N R67W 6th P.M.	<b>North Reference:</b>	True
<b>Well:</b>	MICKEY 5	<b>Survey Calculation Method:</b>	Minimum Curvature
<b>Wellbore:</b>	ORIGINAL WELLBORE		
<b>Design:</b>	PROPOSAL #2		

## Planned Survey

MD (usft)	Inc (°)	Azi (°)	TVD (usft)	SS (usft)	+N/-S (usft)	+E/-W (usft)	Vertical Section (usft)	Dogleg Rate (°/100usft)	Build Rate (°/100usft)	Turn Rate (°/100usft)
<b>SHL: 2420ft FNL &amp; 1828ft FEL of Sec 5</b>										
0.0	0.00	0.00	0.0	4,896.00	0.0	0.0	0.0	0.00	0.00	0.00
100.0	0.00	0.00	100.0	4,796.00	0.0	0.0	0.0	0.00	0.00	0.00
200.0	0.00	0.00	200.0	4,696.00	0.0	0.0	0.0	0.00	0.00	0.00
300.0	0.00	0.00	300.0	4,596.00	0.0	0.0	0.0	0.00	0.00	0.00
400.0	0.00	0.00	400.0	4,496.00	0.0	0.0	0.0	0.00	0.00	0.00
500.0	0.00	0.00	500.0	4,396.00	0.0	0.0	0.0	0.00	0.00	0.00
600.0	0.00	0.00	600.0	4,296.00	0.0	0.0	0.0	0.00	0.00	0.00
700.0	0.00	0.00	700.0	4,196.00	0.0	0.0	0.0	0.00	0.00	0.00
800.0	0.00	0.00	800.0	4,096.00	0.0	0.0	0.0	0.00	0.00	0.00
900.0	0.00	0.00	900.0	3,996.00	0.0	0.0	0.0	0.00	0.00	0.00
1,000.0	0.00	0.00	1,000.0	3,896.00	0.0	0.0	0.0	0.00	0.00	0.00
1,100.0	0.00	0.00	1,100.0	3,796.00	0.0	0.0	0.0	0.00	0.00	0.00
1,200.0	0.00	0.00	1,200.0	3,696.00	0.0	0.0	0.0	0.00	0.00	0.00
1,300.0	0.00	0.00	1,300.0	3,596.00	0.0	0.0	0.0	0.00	0.00	0.00
1,400.0	0.00	0.00	1,400.0	3,496.00	0.0	0.0	0.0	0.00	0.00	0.00
1,500.0	0.00	0.00	1,500.0	3,396.00	0.0	0.0	0.0	0.00	0.00	0.00
<b>9 5/8" SURFACE CASING</b>										
1,600.0	0.00	0.00	1,600.0	3,296.00	0.0	0.0	0.0	0.00	0.00	0.00
1,700.0	0.00	0.00	1,700.0	3,196.00	0.0	0.0	0.0	0.00	0.00	0.00
1,800.0	0.00	0.00	1,800.0	3,096.00	0.0	0.0	0.0	0.00	0.00	0.00
1,900.0	0.00	0.00	1,900.0	2,996.00	0.0	0.0	0.0	0.00	0.00	0.00
2,000.0	0.00	0.00	2,000.0	2,896.00	0.0	0.0	0.0	0.00	0.00	0.00
2,100.0	0.00	0.00	2,100.0	2,796.00	0.0	0.0	0.0	0.00	0.00	0.00
2,200.0	0.00	0.00	2,200.0	2,696.00	0.0	0.0	0.0	0.00	0.00	0.00
2,300.0	0.00	0.00	2,300.0	2,596.00	0.0	0.0	0.0	0.00	0.00	0.00
2,400.0	0.00	0.00	2,400.0	2,496.00	0.0	0.0	0.0	0.00	0.00	0.00
<b>START NUDGE (2°/100ft BUR)</b>										
2,500.0	0.00	0.00	2,500.0	2,396.00	0.0	0.0	0.0	0.00	0.00	0.00
2,600.0	2.00	326.41	2,600.0	2,296.02	1.5	-1.0	-0.7	2.00	2.00	0.00
2,700.0	4.00	326.41	2,699.8	2,196.16	5.8	-3.9	-2.8	2.00	2.00	0.00
2,800.0	6.00	326.41	2,799.5	2,096.55	13.1	-8.7	-6.3	2.00	2.00	0.00
2,900.0	8.00	326.41	2,898.7	1,997.30	23.2	-15.4	-11.2	2.00	2.00	0.00
3,000.0	10.00	326.41	2,997.5	1,898.53	36.3	-24.1	-17.5	2.00	2.00	0.00
3,100.0	12.00	326.41	3,095.6	1,800.38	52.1	-34.6	-25.2	2.00	2.00	0.00
3,200.0	14.00	326.41	3,193.1	1,702.94	70.9	-47.1	-34.2	2.00	2.00	0.00
3,300.0	16.00	326.41	3,289.6	1,606.36	92.4	-61.4	-44.6	2.00	2.00	0.00
<b>PARKMAN</b>										
3,366.1	17.32	326.41	3,353.0	1,543.00	108.2	-71.9	-52.2	2.00	2.00	0.00
3,400.0	18.00	326.41	3,385.3	1,510.73	116.8	-77.6	-56.4	2.00	2.00	0.00
3,500.0	20.00	326.41	3,479.8	1,416.18	143.9	-95.6	-69.5	2.00	2.00	0.00
3,600.0	22.00	326.41	3,573.2	1,322.83	173.8	-115.4	-83.9	2.00	2.00	0.00
3,700.0	24.00	326.41	3,665.2	1,230.79	206.3	-137.0	-99.6	2.00	2.00	0.00
3,800.0	26.00	326.41	3,755.8	1,140.16	241.5	-160.4	-116.6	2.00	2.00	0.00
3,900.0	28.00	326.41	3,844.9	1,051.06	279.3	-185.5	-134.8	2.00	2.00	0.00
<b>EOB TO 29.75° INC</b>										
3,987.3	29.75	326.41	3,921.4	974.62	314.5	-208.8	-151.8	2.00	2.00	0.00
4,000.0	29.75	326.41	3,932.4	963.59	319.7	-212.3	-154.3	0.01	0.01	0.00
<b>SUSSEX</b>										
4,023.7	29.75	326.41	3,953.0	943.00	329.5	-218.8	-159.0	0.00	0.00	0.00
4,100.0	29.75	326.41	4,019.2	876.77	361.0	-239.8	-174.2	0.00	0.00	0.00
4,200.0	29.75	326.41	4,106.1	789.95	402.4	-267.2	-194.2	0.00	0.00	0.00
4,300.0	29.75	326.41	4,192.9	703.12	443.7	-294.7	-214.1	0.00	0.00	0.00

# Planning Report



<b>Database:</b>	EDM 5000.1 Single User Db	<b>Local Co-ordinate Reference:</b>	Well MICKEY 5
<b>Company:</b>	EXTRACTION OIL & GAS	<b>TVD Reference:</b>	KB-EST @ 4896.0usft
<b>Project:</b>	WELD COUNTY, COLORADO (NAD 83)	<b>MD Reference:</b>	KB-EST @ 4896.0usft
<b>Site:</b>	SW NE SEC. 5 T6N R67W 6th P.M.	<b>North Reference:</b>	True
<b>Well:</b>	MICKEY 5	<b>Survey Calculation Method:</b>	Minimum Curvature
<b>Wellbore:</b>	ORIGINAL WELLBORE		
<b>Design:</b>	PROPOSAL #2		

## Planned Survey

MD (usft)	Inc (°)	Azi (°)	TVD (usft)	SS (usft)	+N/-S (usft)	+E/-W (usft)	Vertical Section (usft)	Dogleg Rate (°/100usft)	Build Rate (°/100usft)	Turn Rate (°/100usft)
4,400.0	29.75	326.41	4,279.7	616.30	485.0	-322.1	-234.1	0.00	0.00	0.00
<b>SHANNON</b>										
<b>4,495.9</b>	<b>29.75</b>	<b>326.41</b>	<b>4,363.0</b>	<b>533.00</b>	<b>524.7</b>	<b>-348.5</b>	<b>-253.2</b>	<b>0.00</b>	<b>0.00</b>	<b>0.00</b>
4,500.0	29.75	326.41	4,366.5	529.48	526.4	-349.6	-254.0	0.00	0.00	0.00
4,600.0	29.75	326.41	4,453.3	442.65	567.7	-377.0	-274.0	0.00	0.00	0.00
4,700.0	29.75	326.41	4,540.2	355.83	609.0	-404.5	-293.9	0.00	0.00	0.00
4,800.0	29.75	326.41	4,627.0	269.01	650.4	-431.9	-313.9	0.00	0.00	0.00
4,900.0	29.75	326.41	4,713.8	182.19	691.7	-459.4	-333.8	0.00	0.00	0.00
5,000.0	29.75	326.41	4,800.6	95.36	733.0	-486.8	-353.8	0.00	0.00	0.00
5,100.0	29.75	326.41	4,887.5	8.54	774.4	-514.3	-373.7	0.00	0.00	0.00
5,200.0	29.75	326.41	4,974.3	-78.28	815.7	-541.7	-393.7	0.00	0.00	0.00
5,300.0	29.75	326.41	5,061.1	-165.10	857.0	-569.2	-413.6	0.00	0.00	0.00
5,400.0	29.75	326.41	5,147.9	-251.93	898.3	-596.6	-433.6	0.00	0.00	0.00
5,500.0	29.75	326.41	5,234.8	-338.75	939.7	-624.1	-453.5	0.00	0.00	0.00
5,600.0	29.75	326.41	5,321.6	-425.57	981.0	-651.5	-473.5	0.00	0.00	0.00
5,700.0	29.75	326.41	5,408.4	-512.40	1,022.3	-679.0	-493.4	0.00	0.00	0.00
5,800.0	29.75	326.41	5,495.2	-599.22	1,063.7	-706.4	-513.4	0.00	0.00	0.00
5,900.0	29.75	326.41	5,582.0	-686.04	1,105.0	-733.9	-533.3	0.00	0.00	0.00
6,000.0	29.75	326.41	5,668.9	-772.86	1,146.3	-761.3	-553.3	0.00	0.00	0.00
6,100.0	29.75	326.41	5,755.7	-859.69	1,187.7	-788.8	-573.2	0.00	0.00	0.00
6,200.0	29.75	326.41	5,842.5	-946.51	1,229.0	-816.2	-593.2	0.00	0.00	0.00
6,300.0	29.75	326.41	5,929.3	-1,033.33	1,270.3	-843.7	-613.1	0.00	0.00	0.00
6,400.0	29.75	326.41	6,016.2	-1,120.16	1,311.7	-871.1	-633.0	0.00	0.00	0.00
6,500.0	29.75	326.41	6,103.0	-1,206.98	1,353.0	-898.6	-653.0	0.00	0.00	0.00
6,600.0	29.75	326.41	6,189.8	-1,293.80	1,394.3	-926.0	-672.9	0.00	0.00	0.00
<b>KOP (10°/100ft DGLG)</b>										
<b>6,615.2</b>	<b>29.75</b>	<b>326.41</b>	<b>6,203.0</b>	<b>-1,307.00</b>	<b>1,400.6</b>	<b>-930.2</b>	<b>-676.0</b>	<b>0.00</b>	<b>0.00</b>	<b>0.00</b>
6,700.0	26.44	343.07	6,277.9	-1,381.91	1,436.3	-947.4	-686.8	10.00	-3.90	19.64
6,800.0	25.54	5.92	6,368.0	-1,472.03	1,479.1	-951.6	-683.6	10.00	-0.90	22.86
6,900.0	28.14	27.43	6,457.5	-1,561.46	1,521.6	-938.5	-663.4	10.00	2.61	21.51
7,000.0	33.44	44.10	6,543.5	-1,647.49	1,562.4	-908.4	-626.7	10.00	5.30	16.67
7,100.0	40.38	56.15	6,623.5	-1,727.51	1,600.3	-862.2	-574.7	10.00	6.94	12.05
7,200.0	48.24	65.02	6,695.1	-1,799.08	1,634.2	-801.3	-508.9	10.00	7.87	8.87
<b>SHARON SPRINGS</b>										
<b>7,219.7</b>	<b>49.87</b>	<b>66.51</b>	<b>6,708.0</b>	<b>-1,812.00</b>	<b>1,640.3</b>	<b>-787.7</b>	<b>-494.5</b>	<b>10.00</b>	<b>8.23</b>	<b>7.53</b>
<b>NIOBRARA</b>										
<b>7,276.9</b>	<b>54.67</b>	<b>70.44</b>	<b>6,743.0</b>	<b>-1,847.00</b>	<b>1,656.9</b>	<b>-745.7</b>	<b>-450.2</b>	<b>10.00</b>	<b>8.39</b>	<b>6.88</b>
7,300.0	56.64	71.90	6,756.0	-1,860.03	1,663.0	-727.6	-431.4	10.00	8.54	6.30
7,400.0	65.35	77.53	6,804.5	-1,908.50	1,685.8	-643.4	-344.4	10.00	8.71	5.64
7,500.0	74.23	82.42	6,839.0	-1,943.03	1,702.0	-551.1	-250.7	10.00	8.89	4.89
7,600.0	83.22	86.90	6,858.6	-1,962.56	1,711.1	-453.5	-153.1	10.00	8.99	4.47
<b>HZ LP: 704ft FNL &amp; 2178ft FEL of Sec 5 - NIO B TARGET</b>										
<b>7,675.1</b>	<b>90.00</b>	<b>90.13</b>	<b>6,863.0</b>	<b>-1,967.00</b>	<b>1,713.0</b>	<b>-378.7</b>	<b>-79.0</b>	<b>10.00</b>	<b>9.03</b>	<b>4.31</b>
7,700.0	90.00	90.13	6,863.0	-1,967.00	1,713.0	-353.7	-54.5	0.00	0.00	0.00
7,800.0	90.00	90.13	6,863.0	-1,967.00	1,712.7	-253.7	44.0	0.00	0.00	0.00
7,900.0	90.00	90.13	6,863.0	-1,967.00	1,712.5	-153.7	142.5	0.00	0.00	0.00
8,000.0	90.00	90.13	6,863.0	-1,967.00	1,712.3	-53.7	241.0	0.00	0.00	0.00
8,100.0	90.00	90.13	6,863.0	-1,967.00	1,712.1	46.3	339.4	0.00	0.00	0.00
8,200.0	90.00	90.13	6,863.0	-1,967.00	1,711.8	146.3	437.9	0.00	0.00	0.00
8,300.0	90.00	90.13	6,863.0	-1,967.00	1,711.6	246.3	536.4	0.00	0.00	0.00
8,400.0	90.00	90.13	6,863.0	-1,967.00	1,711.4	346.3	634.9	0.00	0.00	0.00
8,500.0	90.00	90.13	6,863.0	-1,967.00	1,711.1	446.3	733.3	0.00	0.00	0.00
8,600.0	90.00	90.13	6,863.0	-1,967.00	1,710.9	546.3	831.8	0.00	0.00	0.00

# Planning Report



<b>Database:</b>	EDM 5000.1 Single User Db	<b>Local Co-ordinate Reference:</b>	Well MICKEY 5
<b>Company:</b>	EXTRACTION OIL & GAS	<b>TVD Reference:</b>	KB-EST @ 4896.0usft
<b>Project:</b>	WELD COUNTY, COLORADO (NAD 83)	<b>MD Reference:</b>	KB-EST @ 4896.0usft
<b>Site:</b>	SW NE SEC. 5 T6N R67W 6th P.M.	<b>North Reference:</b>	True
<b>Well:</b>	MICKEY 5	<b>Survey Calculation Method:</b>	Minimum Curvature
<b>Wellbore:</b>	ORIGINAL WELLBORE		
<b>Design:</b>	PROPOSAL #2		

Planned Survey										
MD (usft)	Inc (°)	Azi (°)	TVD (usft)	SS (usft)	+N/-S (usft)	+E/-W (usft)	Vertical Section (usft)	Dogleg Rate (°/100usft)	Build Rate (°/100usft)	Turn Rate (°/100usft)
8,700.0	90.00	90.13	6,863.0	-1,967.00	1,710.7	646.3	930.3	0.00	0.00	0.00
8,800.0	90.00	90.13	6,863.0	-1,967.00	1,710.4	746.3	1,028.8	0.00	0.00	0.00
8,900.0	90.00	90.13	6,863.0	-1,967.00	1,710.2	846.3	1,127.2	0.00	0.00	0.00
9,000.0	90.00	90.13	6,863.0	-1,967.00	1,710.0	946.3	1,225.7	0.00	0.00	0.00
9,100.0	90.00	90.13	6,863.0	-1,967.00	1,709.7	1,046.3	1,324.2	0.00	0.00	0.00
9,200.0	90.00	90.13	6,863.0	-1,967.00	1,709.5	1,146.3	1,422.7	0.00	0.00	0.00
9,300.0	90.00	90.13	6,863.0	-1,967.00	1,709.3	1,246.3	1,521.1	0.00	0.00	0.00
9,400.0	90.00	90.13	6,863.0	-1,967.00	1,709.0	1,346.3	1,619.6	0.00	0.00	0.00
9,500.0	90.00	90.13	6,863.0	-1,967.00	1,708.8	1,446.3	1,718.1	0.00	0.00	0.00
9,600.0	90.00	90.13	6,863.0	-1,967.00	1,708.6	1,546.3	1,816.6	0.00	0.00	0.00
9,700.0	90.00	90.13	6,863.0	-1,967.00	1,708.3	1,646.3	1,915.1	0.00	0.00	0.00
9,800.0	90.00	90.13	6,863.0	-1,967.00	1,708.1	1,746.3	2,013.5	0.00	0.00	0.00
9,900.0	90.00	90.13	6,863.0	-1,967.00	1,707.9	1,846.3	2,112.0	0.00	0.00	0.00
10,000.0	90.00	90.13	6,863.0	-1,967.00	1,707.6	1,946.3	2,210.5	0.00	0.00	0.00
10,100.0	90.00	90.13	6,863.0	-1,967.00	1,707.4	2,046.3	2,309.0	0.00	0.00	0.00
10,200.0	90.00	90.13	6,863.0	-1,967.00	1,707.2	2,146.3	2,407.4	0.00	0.00	0.00
10,300.0	90.00	90.13	6,863.0	-1,967.00	1,706.9	2,246.3	2,505.9	0.00	0.00	0.00
10,400.0	90.00	90.13	6,863.0	-1,967.00	1,706.7	2,346.3	2,604.4	0.00	0.00	0.00
10,500.0	90.00	90.13	6,863.0	-1,967.00	1,706.5	2,446.3	2,702.9	0.00	0.00	0.00
10,600.0	90.00	90.13	6,863.0	-1,967.00	1,706.2	2,546.3	2,801.3	0.00	0.00	0.00
10,700.0	90.00	90.13	6,863.0	-1,967.00	1,706.0	2,646.3	2,899.8	0.00	0.00	0.00
10,800.0	90.00	90.13	6,863.0	-1,967.00	1,705.8	2,746.3	2,998.3	0.00	0.00	0.00
10,900.0	90.00	90.13	6,863.0	-1,967.00	1,705.5	2,846.3	3,096.8	0.00	0.00	0.00
11,000.0	90.00	90.13	6,863.0	-1,967.00	1,705.3	2,946.3	3,195.2	0.00	0.00	0.00
11,100.0	90.00	90.13	6,863.0	-1,967.00	1,705.1	3,046.3	3,293.7	0.00	0.00	0.00
11,200.0	90.00	90.13	6,863.0	-1,967.00	1,704.8	3,146.3	3,392.2	0.00	0.00	0.00
11,300.0	90.00	90.13	6,863.0	-1,967.00	1,704.6	3,246.3	3,490.7	0.00	0.00	0.00
11,400.0	90.00	90.13	6,863.0	-1,967.00	1,704.4	3,346.3	3,589.1	0.00	0.00	0.00
11,500.0	90.00	90.13	6,863.0	-1,967.00	1,704.1	3,446.3	3,687.6	0.00	0.00	0.00
11,600.0	90.00	90.13	6,863.0	-1,967.00	1,703.9	3,546.3	3,786.1	0.00	0.00	0.00
11,700.0	90.00	90.13	6,863.0	-1,967.00	1,703.7	3,646.3	3,884.6	0.00	0.00	0.00
11,800.0	90.00	90.13	6,863.0	-1,967.00	1,703.4	3,746.3	3,983.0	0.00	0.00	0.00
11,900.0	90.00	90.13	6,863.0	-1,967.00	1,703.2	3,846.3	4,081.5	0.00	0.00	0.00
12,000.0	90.00	90.13	6,863.0	-1,967.00	1,703.0	3,946.3	4,180.0	0.00	0.00	0.00
12,100.0	90.00	90.13	6,863.0	-1,967.00	1,702.7	4,046.3	4,278.5	0.00	0.00	0.00
12,200.0	90.00	90.13	6,863.0	-1,967.00	1,702.5	4,146.3	4,376.9	0.00	0.00	0.00
12,300.0	90.00	90.13	6,863.0	-1,967.00	1,702.3	4,246.2	4,475.4	0.00	0.00	0.00
12,400.0	90.00	90.13	6,863.0	-1,967.00	1,702.0	4,346.2	4,573.9	0.00	0.00	0.00
12,500.0	90.00	90.13	6,863.0	-1,967.00	1,701.8	4,446.2	4,672.4	0.00	0.00	0.00
12,600.0	90.00	90.13	6,863.0	-1,967.00	1,701.6	4,546.2	4,770.8	0.00	0.00	0.00
12,700.0	90.00	90.13	6,863.0	-1,967.00	1,701.3	4,646.2	4,869.3	0.00	0.00	0.00
12,800.0	90.00	90.13	6,863.0	-1,967.00	1,701.1	4,746.2	4,967.8	0.00	0.00	0.00
12,900.0	90.00	90.13	6,863.0	-1,967.00	1,700.9	4,846.2	5,066.3	0.00	0.00	0.00
13,000.0	90.00	90.13	6,863.0	-1,967.00	1,700.6	4,946.2	5,164.7	0.00	0.00	0.00
13,100.0	90.00	90.13	6,863.0	-1,967.00	1,700.4	5,046.2	5,263.2	0.00	0.00	0.00
13,200.0	90.00	90.13	6,863.0	-1,967.00	1,700.2	5,146.2	5,361.7	0.00	0.00	0.00
13,300.0	90.00	90.13	6,863.0	-1,967.00	1,699.9	5,246.2	5,460.2	0.00	0.00	0.00
13,400.0	90.00	90.13	6,863.0	-1,967.00	1,699.7	5,346.2	5,558.6	0.00	0.00	0.00
13,500.0	90.00	90.13	6,863.0	-1,967.00	1,699.5	5,446.2	5,657.1	0.00	0.00	0.00
13,600.0	90.00	90.13	6,863.0	-1,967.00	1,699.2	5,546.2	5,755.6	0.00	0.00	0.00
13,700.0	90.00	90.13	6,863.0	-1,967.00	1,699.0	5,646.2	5,854.1	0.00	0.00	0.00
13,800.0	90.00	90.13	6,863.0	-1,967.00	1,698.7	5,746.2	5,952.5	0.00	0.00	0.00
13,900.0	90.00	90.13	6,863.0	-1,967.00	1,698.5	5,846.2	6,051.0	0.00	0.00	0.00
14,000.0	90.00	90.13	6,863.0	-1,967.00	1,698.3	5,946.2	6,149.5	0.00	0.00	0.00

# Planning Report



<b>Database:</b>	EDM 5000.1 Single User Db	<b>Local Co-ordinate Reference:</b>	Well MICKEY 5
<b>Company:</b>	EXTRACTION OIL & GAS	<b>TVD Reference:</b>	KB-EST @ 4896.0usft
<b>Project:</b>	WELD COUNTY, COLORADO (NAD 83)	<b>MD Reference:</b>	KB-EST @ 4896.0usft
<b>Site:</b>	SW NE SEC. 5 T6N R67W 6th P.M.	<b>North Reference:</b>	True
<b>Well:</b>	MICKEY 5	<b>Survey Calculation Method:</b>	Minimum Curvature
<b>Wellbore:</b>	ORIGINAL WELLBORE		
<b>Design:</b>	PROPOSAL #2		

Planned Survey										
MD (usft)	Inc (°)	Azi (°)	TVD (usft)	SS (usft)	+N/-S (usft)	+E/-W (usft)	Vertical Section (usft)	Dogleg Rate (°/100usft)	Build Rate (°/100usft)	Turn Rate (°/100usft)
14,100.0	90.00	90.13	6,863.0	-1,967.00	1,698.0	6,046.2	6,248.0	0.00	0.00	0.00
14,200.0	90.00	90.13	6,863.0	-1,967.00	1,697.8	6,146.2	6,346.4	0.00	0.00	0.00
14,300.0	90.00	90.13	6,863.0	-1,967.00	1,697.6	6,246.2	6,444.9	0.00	0.00	0.00
14,400.0	90.00	90.13	6,863.0	-1,967.00	1,697.3	6,346.2	6,543.4	0.00	0.00	0.00
14,500.0	90.00	90.13	6,863.0	-1,967.00	1,697.1	6,446.2	6,641.9	0.00	0.00	0.00
14,600.0	90.00	90.13	6,863.0	-1,967.00	1,696.9	6,546.2	6,740.3	0.00	0.00	0.00
14,700.0	90.00	90.13	6,863.0	-1,967.00	1,696.6	6,646.2	6,838.8	0.00	0.00	0.00
14,800.0	90.00	90.13	6,863.0	-1,967.00	1,696.4	6,746.2	6,937.3	0.00	0.00	0.00
14,900.0	90.00	90.13	6,863.0	-1,967.00	1,696.2	6,846.2	7,035.8	0.00	0.00	0.00
15,000.0	90.00	90.13	6,863.0	-1,967.00	1,695.9	6,946.2	7,134.2	0.00	0.00	0.00
15,100.0	90.00	90.13	6,863.0	-1,967.00	1,695.7	7,046.2	7,232.7	0.00	0.00	0.00
15,200.0	90.00	90.13	6,863.0	-1,967.00	1,695.5	7,146.2	7,331.2	0.00	0.00	0.00
15,300.0	90.00	90.13	6,863.0	-1,967.00	1,695.2	7,246.2	7,429.7	0.00	0.00	0.00
15,400.0	90.00	90.13	6,863.0	-1,967.00	1,695.0	7,346.2	7,528.2	0.00	0.00	0.00
15,500.0	90.00	90.13	6,863.0	-1,967.00	1,694.8	7,446.2	7,626.6	0.00	0.00	0.00
15,600.0	90.00	90.13	6,863.0	-1,967.00	1,694.5	7,546.2	7,725.1	0.00	0.00	0.00
15,700.0	90.00	90.13	6,863.0	-1,967.00	1,694.3	7,646.2	7,823.6	0.00	0.00	0.00
15,800.0	90.00	90.13	6,863.0	-1,967.00	1,694.0	7,746.2	7,922.1	0.00	0.00	0.00
15,900.0	90.00	90.14	6,863.0	-1,967.00	1,693.8	7,846.2	8,020.5	0.00	0.00	0.00
16,000.0	90.00	90.14	6,863.0	-1,967.00	1,693.6	7,946.2	8,119.0	0.00	0.00	0.00
16,100.0	90.00	90.14	6,863.0	-1,967.00	1,693.3	8,046.2	8,217.5	0.00	0.00	0.00
16,200.0	90.00	90.14	6,863.0	-1,967.00	1,693.1	8,146.2	8,316.0	0.00	0.00	0.00
16,300.0	90.00	90.14	6,863.0	-1,967.00	1,692.9	8,246.2	8,414.4	0.00	0.00	0.00
16,400.0	90.00	90.14	6,863.0	-1,967.00	1,692.6	8,346.2	8,512.9	0.00	0.00	0.00
16,500.0	90.00	90.14	6,863.0	-1,967.00	1,692.4	8,446.2	8,611.4	0.00	0.00	0.00
16,600.0	90.00	90.14	6,863.0	-1,967.00	1,692.2	8,546.2	8,709.9	0.00	0.00	0.00
16,700.0	90.00	90.14	6,863.0	-1,967.00	1,691.9	8,646.2	8,808.3	0.00	0.00	0.00
16,800.0	90.00	90.14	6,863.0	-1,967.00	1,691.7	8,746.2	8,906.8	0.00	0.00	0.00
16,900.0	90.00	90.14	6,863.0	-1,967.00	1,691.4	8,846.2	9,005.3	0.00	0.00	0.00
17,000.0	90.00	90.14	6,863.0	-1,967.00	1,691.2	8,946.2	9,103.8	0.00	0.00	0.00
17,100.0	90.00	90.14	6,863.0	-1,967.00	1,691.0	9,046.2	9,202.2	0.00	0.00	0.00
17,200.0	90.00	90.14	6,863.0	-1,967.00	1,690.7	9,146.2	9,300.7	0.00	0.00	0.00
17,300.0	90.00	90.14	6,863.0	-1,967.00	1,690.5	9,246.2	9,399.2	0.00	0.00	0.00
17,400.0	90.00	90.14	6,863.0	-1,967.00	1,690.3	9,346.2	9,497.7	0.00	0.00	0.00
17,500.0	90.00	90.14	6,863.0	-1,967.00	1,690.0	9,446.2	9,596.1	0.00	0.00	0.00
17,600.0	90.00	90.14	6,863.0	-1,967.00	1,689.8	9,546.2	9,694.6	0.00	0.00	0.00
17,700.0	90.00	90.14	6,863.0	-1,967.00	1,689.6	9,646.2	9,793.1	0.00	0.00	0.00
<b>BHL: 791ft FNL &amp; 2628ft FEL of Sec 3</b>										
<b>17,750.3</b>	<b>90.00</b>	<b>90.14</b>	<b>6,863.0</b>	<b>-1,967.00</b>	<b>1,689.4</b>	<b>9,696.5</b>	<b>9,842.6</b>	<b>0.00</b>	<b>0.00</b>	<b>0.00</b>

Formations						
MD (usft)	TVD (usft)	Name	Lithology	Dip (°)	Dip Direction (°)	
3,366.1	3,353.0	PARKMAN				
4,023.7	3,953.0	SUSSEX				
4,495.9	4,363.0	SHANNON				
7,219.7	6,708.0	SHARON SPRINGS				
7,276.9	6,743.0	NIOBRARA				
7,675.1	6,863.0	NIO B TARGET				

<b>Database:</b>	EDM 5000.1 Single User Db	<b>Local Co-ordinate Reference:</b>	Well MICKEY 5
<b>Company:</b>	EXTRACTION OIL & GAS	<b>TVD Reference:</b>	KB-EST @ 4896.0usft
<b>Project:</b>	WELD COUNTY, COLORADO (NAD 83)	<b>MD Reference:</b>	KB-EST @ 4896.0usft
<b>Site:</b>	SW NE SEC. 5 T6N R67W 6th P.M.	<b>North Reference:</b>	True
<b>Well:</b>	MICKEY 5	<b>Survey Calculation Method:</b>	Minimum Curvature
<b>Wellbore:</b>	ORIGINAL WELLBORE		
<b>Design:</b>	PROPOSAL #2		

## Plan Annotations

MD (usft)	TVD (usft)	Local Coordinates		Comment
		+N/-S (usft)	+E/-W (usft)	
0.0	0.0	0.0	0.0	SHL: 2420ft FNL & 1828ft FEL of Sec 5
1,600.0	1,600.0	0.0	0.0	9 5/8" SURFACE CASING
2,500.0	2,500.0	0.0	0.0	START NUDGE (2°/100ft BUR)
3,987.3	3,921.4	314.5	-208.8	EOB TO 29.75° INC
6,615.2	6,203.0	1,400.6	-930.2	KOP (10°/100ft DGLG)
7,675.1	6,863.0	1,713.0	-378.6	HZ LP: 704ft FNL & 2178ft FEL of Sec 5
17,750.3	6,863.0	1,689.4	9,696.5	BHL: 791ft FNL & 2628ft FEL of Sec 3