

EXTRACTION OIL & GAS

WELD COUNTY, COLORADO (NAD 83)

SW NE SEC. 5 T6N R67W 6th P.M.

MICKEY 2

ORIGINAL WELLBORE

07 October, 2016

Plan: PROPOSAL #2

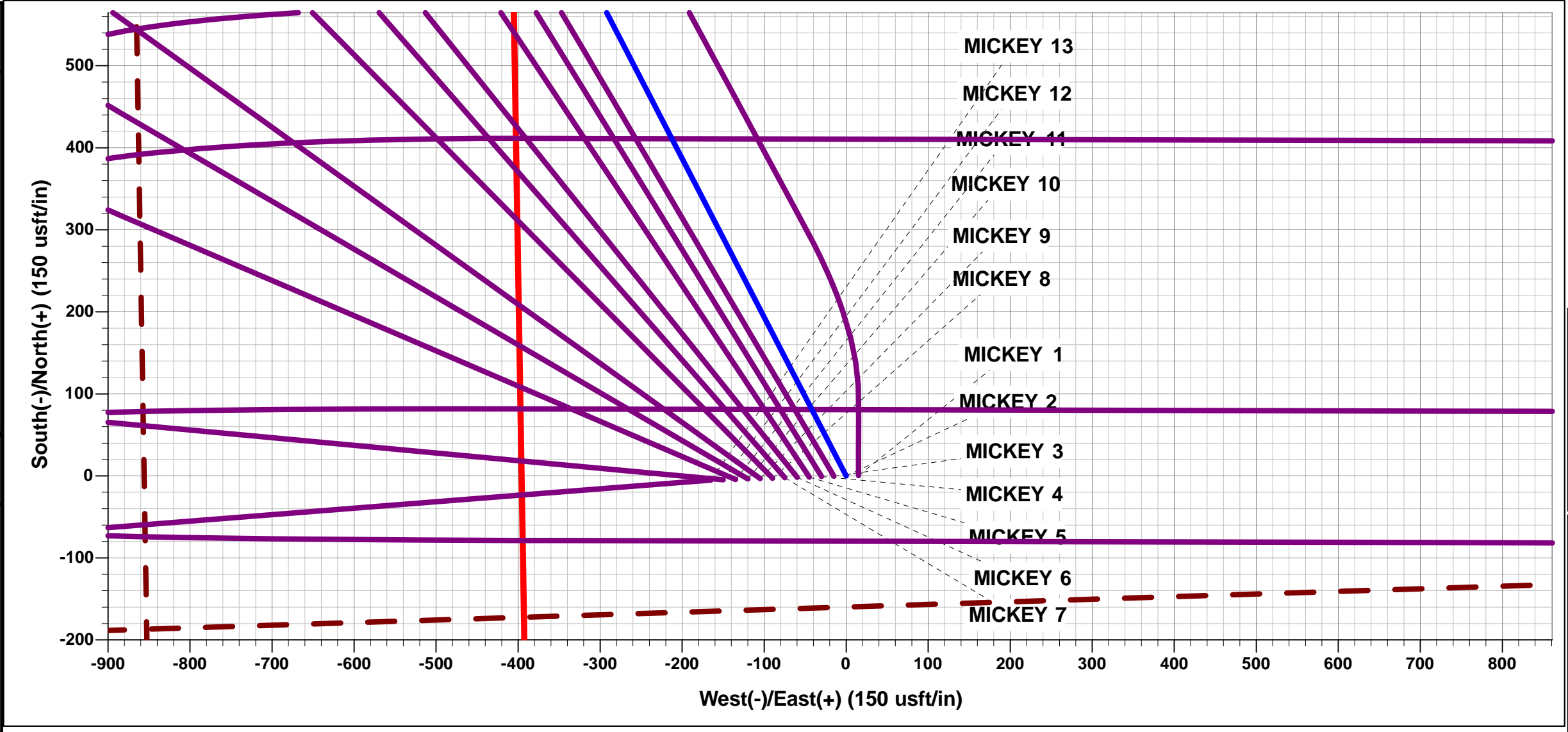




Project: WELD COUNTY, COLORADO (NAD 83)
Site: SW NE SEC. 5 T6N R67W 6th P.M.
Well: MICKEY 2
Wellbore: ORIGINAL WELLBORE
Design: PROPOSAL #2

ANNOTATIONS									
TVD	MD	Inc	Azi	+N/-S	+E/-W	VSect	Dep	Annotation	
0.0	0.0	0.00	0.00	0.0	0.0	0.0	0.0	SHL: 2419ft FNL & 1783ft FEL of Sec 5	
1600.0	1600.0	0.00	0.00	0.0	0.0	0.0	0.0	9 5/8" SURFACE CASING	
2800.0	2800.0	0.00	0.00	0.0	0.0	0.0	0.0	START NUDGE (2°/100ft BUR)	
4712.3	4893.8	41.88	332.65	649.9	-336.1	-173.6	731.7	EOB TO 41.88° INC	
6277.5	6995.9	41.88	332.65	1896.3	-980.7	-506.5	2134.9	KOP (10°/100ft DGLG)	
6864.0	8075.3	90.00	90.13	2361.5	-434.5	133.9	2989.7	HZ LP: 54ft FNL & 2177ft FEL of Sec 5	
6864.0	18157.5	90.00	90.14	2337.9	9647.7	9926.9	13071.9	BHL: 141ft FNL & 2632ft FEL of Sec 3	

WELLBORE TARGET DETAILS (LAT/LONG)						
Name	TVD	+N/-S	+E/-W	Latitude	Longitude	
HZ LP - MICKEY 2	6864.0	2361.5	-434.5	40.522885	-104.915819	
BHL - MICKEY 2	6864.0	2337.9	9647.7	40.522815	-104.879554	



FORMATION TOP DETAILS		
TVDPath	MDPath	Formation
3354.0	3357.5	PARKMAN
3954.0	3987.7	SUSSEX
4364.0	4454.4	SHANNON
6709.0	7583.9	SHARON SPRINGS
6744.0	7646.1	NIOBRARA
6864.0	8075.3	NIO B TARGET

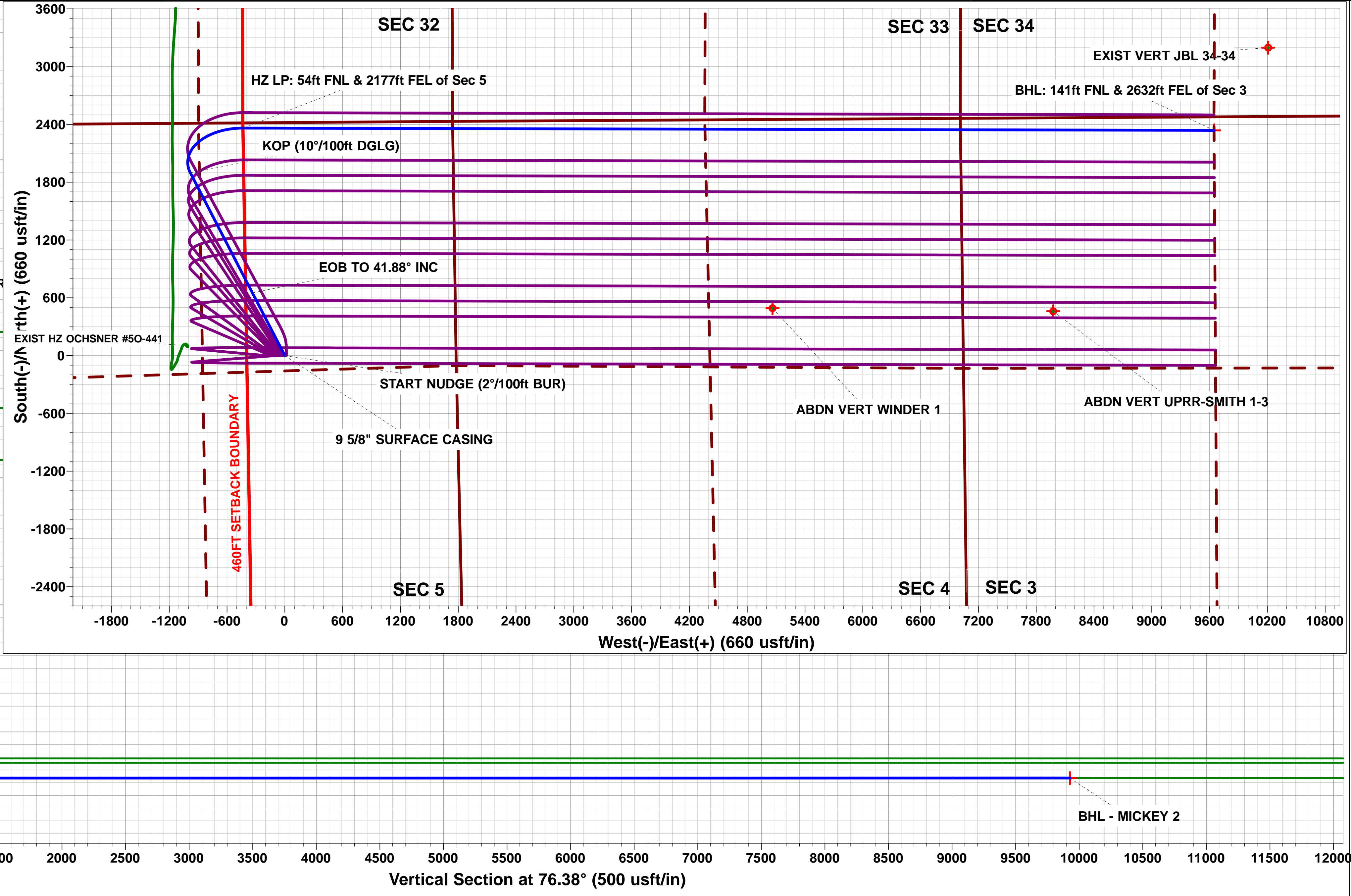
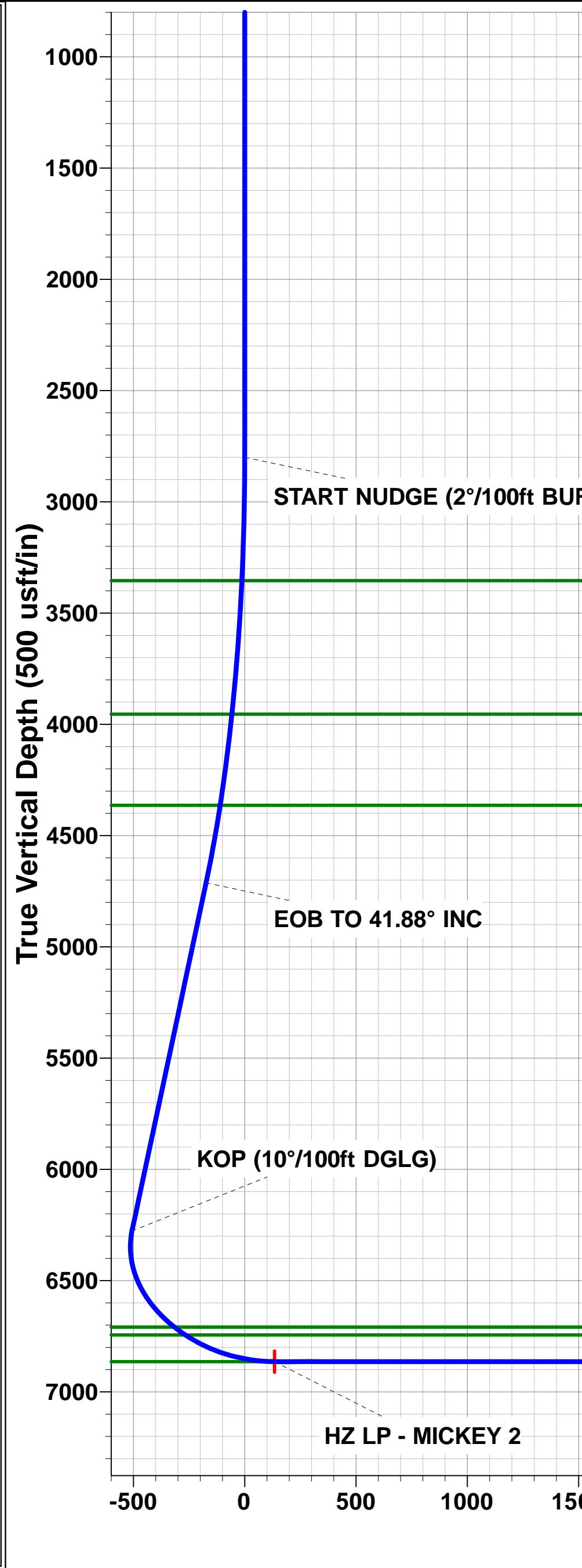
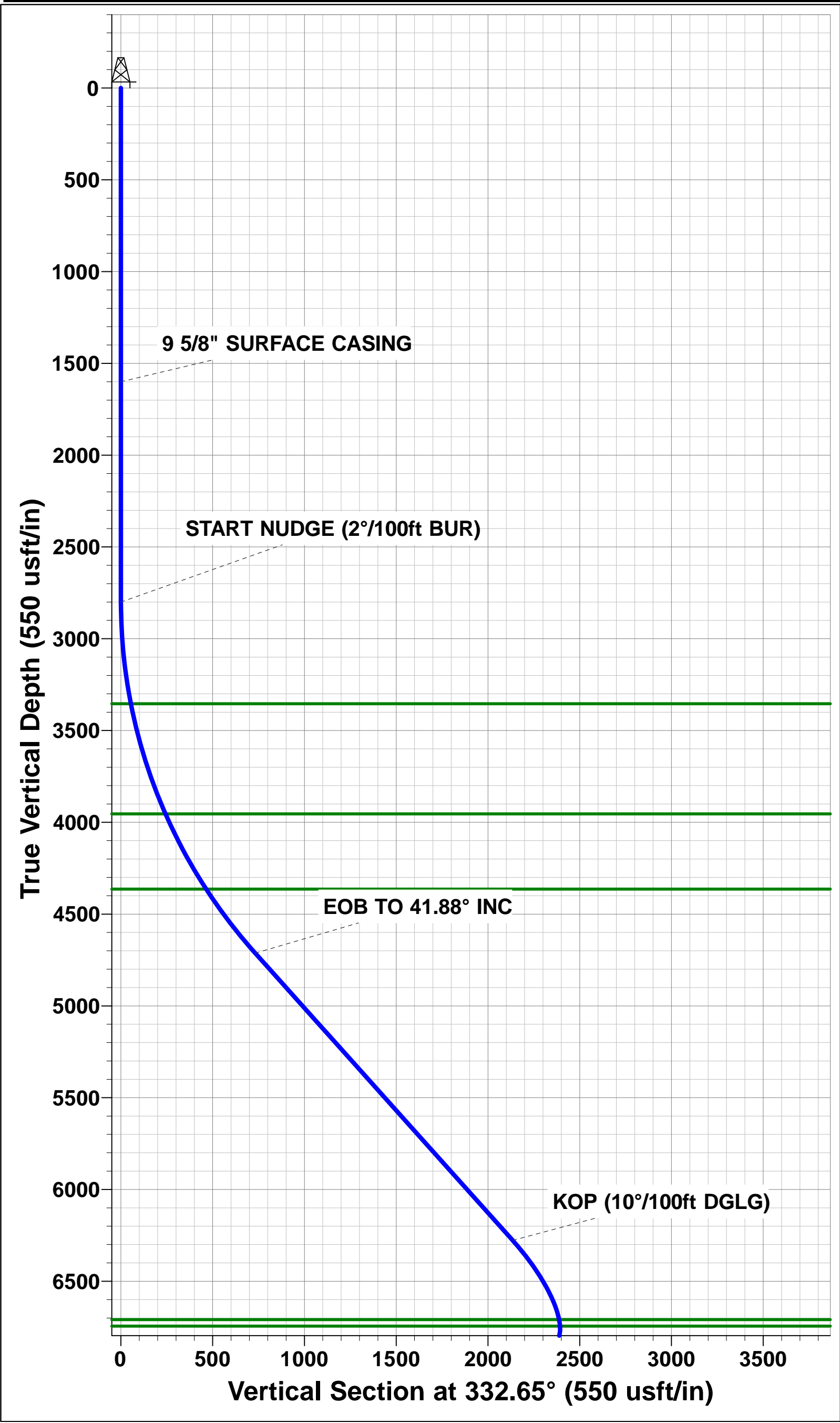
PROPOSED LOCAL COORDINATES	
SHL: 2419ft FNL & 1783ft FEL of Sec 5	
LP: 54ft FNL & 2177ft FEL of Sec 5	
BHL: 141ft FNL & 2632ft FEL of Sec 3	

T

M

Azimuths to True North
Magnetic North: 8.39°

Magnetic Field
Strength: 52533.6snT
Dip Angle: 66.95°
Date: 10/08/2016
Model: IGRF2015



Planning Report



Database:	EDM 5000.1 Single User Db	Local Co-ordinate Reference:	Well MICKEY 2
Company:	EXTRACTION OIL & GAS	TVD Reference:	KB-EST @ 4897.0usft
Project:	WELD COUNTY, COLORADO (NAD 83)	MD Reference:	KB-EST @ 4897.0usft
Site:	SW NE SEC. 5 T6N R67W 6th P.M.	North Reference:	True
Well:	MICKEY 2	Survey Calculation Method:	Minimum Curvature
Wellbore:	ORIGINAL WELLBORE		
Design:	PROPOSAL #2		

Project	WELD COUNTY, COLORADO (NAD 83)		
Map System:	US State Plane 1983	System Datum:	Mean Sea Level
Geo Datum:	North American Datum 1983		
Map Zone:	Colorado Northern Zone		Using geodetic scale factor

Site	SW NE SEC. 5 T6N R67W 6th P.M.		
Site Position:		Northing:	1,431,152.83 usft
From:	Lat/Long	Easting:	3,162,171.69 usft
Position Uncertainty:	0.0 usft	Slot Radius:	1.10000ft
		Latitude:	40.515451
		Longitude:	-104.916720
		Grid Convergence:	0.38 °

Well	MICKEY 2		
Well Position	+N-S	346.8 usft	Northing:
	+E-W	685.1 usft	Easting:
Position Uncertainty	0.0 usft	Wellhead Elevation:	usft
		Latitude:	40.516403
		Longitude:	-104.914256
		Ground Level:	4,881.0 usft

Wellbore	ORIGINAL WELLBORE				
Magnetics	Model Name	Sample Date	Declination (°)	Dip Angle (°)	Field Strength (nT)
	IGRF2015	10/08/2016	8.39	66.95	52,534

Design	PROPOSAL #2			
Audit Notes:				
Version:	Phase:	PROTOTYPE	Tie On Depth:	0.0
Vertical Section:	Depth From (TVD) (usft)	+N-S (usft)	+E-W (usft)	Direction (°)
	4.0	0.0	0.0	76.38

Plan Sections											
MD (usft)	Inc (°)	Azi (°)	Vertical Depth	SS (usft)	+N-S (usft)	+E-W (usft)	Dogleg Rate (°/100usf)	Build Rate (°/100usf)	Turn Rate (°/100usf)	TFO (°)	Target
0.0	0.00	0.00	0.0	-4,897.0	0.0	0.0	0.00	0.00	0.00	0.00	
2,800.0	0.00	0.00	2,800.0	-2,097.0	0.0	0.0	0.00	0.00	0.00	0.00	
4,893.8	41.88	332.65	4,712.3	-184.7	649.9	-336.1	2.00	2.00	0.00	332.65	
6,995.9	41.88	332.65	6,277.5	1,380.5	1,896.3	-980.7	0.00	0.00	0.00	0.00	
8,075.3	90.00	90.13	6,864.0	1,967.0	2,361.5	-434.5	10.00	4.46	10.88	111.17	HZ LP - MICKEY 2
18,157.5	90.00	90.14	6,864.0	1,967.0	2,337.9	9,647.7	0.00	0.00	0.00	90.00	BHL - MICKEY 2

Database:	EDM 5000.1 Single User Db	Local Co-ordinate Reference:	Well MICKEY 2
Company:	EXTRACTION OIL & GAS	TVD Reference:	KB-EST @ 4897.0usft
Project:	WELD COUNTY, COLORADO (NAD 83)	MD Reference:	KB-EST @ 4897.0usft
Site:	SW NE SEC. 5 T6N R67W 6th P.M.	North Reference:	True
Well:	MICKEY 2	Survey Calculation Method:	Minimum Curvature
Wellbore:	ORIGINAL WELLBORE		
Design:	PROPOSAL #2		

Planned Survey

MD (usft)	Inc (°)	Azi (°)	TVD (usft)	SS (usft)	+N/-S (usft)	+E/-W (usft)	Vertical Section (usft)	Dogleg Rate (°/100usft)	Build Rate (°/100usft)	Turn Rate (°/100usft)
SHL: 2419ft FNL & 1783ft FEL of Sec 5										
0.0	0.00	0.00	0.0	4,897.00	0.0	0.0	0.0	0.00	0.00	0.00
100.0	0.00	0.00	100.0	4,797.00	0.0	0.0	0.0	0.00	0.00	0.00
200.0	0.00	0.00	200.0	4,697.00	0.0	0.0	0.0	0.00	0.00	0.00
300.0	0.00	0.00	300.0	4,597.00	0.0	0.0	0.0	0.00	0.00	0.00
400.0	0.00	0.00	400.0	4,497.00	0.0	0.0	0.0	0.00	0.00	0.00
500.0	0.00	0.00	500.0	4,397.00	0.0	0.0	0.0	0.00	0.00	0.00
600.0	0.00	0.00	600.0	4,297.00	0.0	0.0	0.0	0.00	0.00	0.00
700.0	0.00	0.00	700.0	4,197.00	0.0	0.0	0.0	0.00	0.00	0.00
800.0	0.00	0.00	800.0	4,097.00	0.0	0.0	0.0	0.00	0.00	0.00
900.0	0.00	0.00	900.0	3,997.00	0.0	0.0	0.0	0.00	0.00	0.00
1,000.0	0.00	0.00	1,000.0	3,897.00	0.0	0.0	0.0	0.00	0.00	0.00
1,100.0	0.00	0.00	1,100.0	3,797.00	0.0	0.0	0.0	0.00	0.00	0.00
1,200.0	0.00	0.00	1,200.0	3,697.00	0.0	0.0	0.0	0.00	0.00	0.00
1,300.0	0.00	0.00	1,300.0	3,597.00	0.0	0.0	0.0	0.00	0.00	0.00
1,400.0	0.00	0.00	1,400.0	3,497.00	0.0	0.0	0.0	0.00	0.00	0.00
1,500.0	0.00	0.00	1,500.0	3,397.00	0.0	0.0	0.0	0.00	0.00	0.00
9 5/8" SURFACE CASING										
1,600.0	0.00	0.00	1,600.0	3,297.00	0.0	0.0	0.0	0.00	0.00	0.00
1,700.0	0.00	0.00	1,700.0	3,197.00	0.0	0.0	0.0	0.00	0.00	0.00
1,800.0	0.00	0.00	1,800.0	3,097.00	0.0	0.0	0.0	0.00	0.00	0.00
1,900.0	0.00	0.00	1,900.0	2,997.00	0.0	0.0	0.0	0.00	0.00	0.00
2,000.0	0.00	0.00	2,000.0	2,897.00	0.0	0.0	0.0	0.00	0.00	0.00
2,100.0	0.00	0.00	2,100.0	2,797.00	0.0	0.0	0.0	0.00	0.00	0.00
2,200.0	0.00	0.00	2,200.0	2,697.00	0.0	0.0	0.0	0.00	0.00	0.00
2,300.0	0.00	0.00	2,300.0	2,597.00	0.0	0.0	0.0	0.00	0.00	0.00
2,400.0	0.00	0.00	2,400.0	2,497.00	0.0	0.0	0.0	0.00	0.00	0.00
2,500.0	0.00	0.00	2,500.0	2,397.00	0.0	0.0	0.0	0.00	0.00	0.00
2,600.0	0.00	0.00	2,600.0	2,297.00	0.0	0.0	0.0	0.00	0.00	0.00
2,700.0	0.00	0.00	2,700.0	2,197.00	0.0	0.0	0.0	0.00	0.00	0.00
START NUDGE (2°/100ft BUR)										
2,800.0	0.00	0.00	2,800.0	2,097.00	0.0	0.0	0.0	0.00	0.00	0.00
2,900.0	2.00	332.65	2,900.0	1,997.02	1.6	-0.8	-0.4	2.00	2.00	0.00
3,000.0	4.00	332.65	2,999.8	1,897.16	6.2	-3.2	-1.7	2.00	2.00	0.00
3,100.0	6.00	332.65	3,099.5	1,797.55	13.9	-7.2	-3.7	2.00	2.00	0.00
3,200.0	8.00	332.65	3,198.7	1,698.30	24.8	-12.8	-6.6	2.00	2.00	0.00
3,300.0	10.00	332.65	3,297.5	1,599.53	38.7	-20.0	-10.3	2.00	2.00	0.00
PARKMAN										
3,357.5	11.15	332.65	3,354.0	1,543.00	48.0	-24.8	-12.8	2.00	2.00	0.00
3,400.0	12.00	332.65	3,395.6	1,501.38	55.6	-28.8	-14.9	2.00	2.00	0.00
3,500.0	14.00	332.65	3,493.1	1,403.94	75.6	-39.1	-20.2	2.00	2.00	0.00
3,600.0	16.00	332.65	3,589.6	1,307.36	98.6	-51.0	-26.3	2.00	2.00	0.00
3,700.0	18.00	332.65	3,685.3	1,211.73	124.5	-64.4	-33.3	2.00	2.00	0.00
3,800.0	20.00	332.65	3,779.8	1,117.18	153.5	-79.4	-41.0	2.00	2.00	0.00
3,900.0	22.00	332.65	3,873.2	1,023.83	185.3	-95.8	-49.5	2.00	2.00	0.00
SUSSEX										
3,987.7	23.75	332.65	3,954.0	943.00	215.6	-111.5	-57.6	2.00	2.00	0.00
4,000.0	24.00	332.65	3,965.2	931.79	220.0	-113.8	-58.8	2.00	2.00	0.00
4,100.0	26.00	332.65	4,055.8	841.16	257.5	-133.2	-68.8	2.00	2.00	0.00
4,200.0	28.00	332.65	4,144.9	752.06	297.9	-154.0	-79.6	2.00	2.00	0.00
4,300.0	30.00	332.65	4,232.4	664.61	340.9	-176.3	-91.1	2.00	2.00	0.00
4,400.0	32.00	332.65	4,318.1	578.89	386.7	-200.0	-103.3	2.00	2.00	0.00
SHANNON										

Planning Report



Database:	EDM 5000.1 Single User Db	Local Co-ordinate Reference:	Well MICKEY 2
Company:	EXTRACTION OIL & GAS	TVD Reference:	KB-EST @ 4897.0usft
Project:	WELD COUNTY, COLORADO (NAD 83)	MD Reference:	KB-EST @ 4897.0usft
Site:	SW NE SEC. 5 T6N R67W 6th P.M.	North Reference:	True
Well:	MICKEY 2	Survey Calculation Method:	Minimum Curvature
Wellbore:	ORIGINAL WELLBORE		
Design:	PROPOSAL #2		

Planned Survey

MD (usft)	Inc (°)	Azi (°)	TVD (usft)	SS (usft)	+N/-S (usft)	+E/-W (usft)	Vertical Section (usft)	Dogleg Rate (°/100usft)	Build Rate (°/100usft)	Turn Rate (°/100usft)
4,454.4	33.09	332.65	4,364.0	533.00	412.7	-213.4	-110.2	2.00	2.00	0.00
4,500.0	34.00	332.65	4,402.0	495.03	435.0	-225.0	-116.2	2.00	2.00	0.00
4,600.0	36.00	332.65	4,483.9	413.12	486.0	-251.3	-129.8	2.00	2.00	0.00
4,700.0	38.00	332.65	4,563.7	333.26	539.4	-279.0	-144.1	2.00	2.00	0.00
4,800.0	40.00	332.65	4,641.5	255.55	595.3	-307.9	-159.0	2.00	2.00	0.00
EOB TO 41.88° INC										
4,893.8	41.88	332.65	4,712.3	184.69	649.9	-336.1	-173.6	2.00	2.00	0.00
4,900.0	41.88	332.65	4,716.9	180.08	653.6	-338.0	-174.6	0.01	0.01	0.00
5,000.0	41.88	332.65	4,791.4	105.62	712.9	-368.7	-190.4	0.00	0.00	0.00
5,100.0	41.88	332.65	4,865.8	31.16	772.2	-399.4	-206.3	0.00	0.00	0.00
5,200.0	41.88	332.65	4,940.3	-43.30	831.5	-430.0	-222.1	0.00	0.00	0.00
5,300.0	41.88	332.65	5,014.8	-117.76	890.8	-460.7	-237.9	0.00	0.00	0.00
5,400.0	41.88	332.65	5,089.2	-192.21	950.1	-491.3	-253.8	0.00	0.00	0.00
5,500.0	41.88	332.65	5,163.7	-266.67	1,009.4	-522.0	-269.6	0.00	0.00	0.00
5,600.0	41.88	332.65	5,238.1	-341.13	1,068.6	-552.7	-285.5	0.00	0.00	0.00
5,700.0	41.88	332.65	5,312.6	-415.59	1,127.9	-583.3	-301.3	0.00	0.00	0.00
5,800.0	41.88	332.65	5,387.0	-490.05	1,187.2	-614.0	-317.1	0.00	0.00	0.00
5,900.0	41.88	332.65	5,461.5	-564.51	1,246.5	-644.7	-333.0	0.00	0.00	0.00
6,000.0	41.88	332.65	5,536.0	-638.96	1,305.8	-675.3	-348.8	0.00	0.00	0.00
6,100.0	41.88	332.65	5,610.4	-713.42	1,365.1	-706.0	-364.6	0.00	0.00	0.00
6,200.0	41.88	332.65	5,684.9	-787.88	1,424.4	-736.7	-380.5	0.00	0.00	0.00
6,300.0	41.88	332.65	5,759.3	-862.34	1,483.7	-767.3	-396.3	0.00	0.00	0.00
6,400.0	41.88	332.65	5,833.8	-936.80	1,543.0	-798.0	-412.2	0.00	0.00	0.00
6,500.0	41.88	332.65	5,908.3	-1,011.26	1,602.3	-828.7	-428.0	0.00	0.00	0.00
6,600.0	41.88	332.65	5,982.7	-1,085.72	1,661.6	-859.3	-443.8	0.00	0.00	0.00
6,700.0	41.88	332.65	6,057.2	-1,160.17	1,720.9	-890.0	-459.7	0.00	0.00	0.00
6,800.0	41.88	332.65	6,131.6	-1,234.63	1,780.2	-920.7	-475.5	0.00	0.00	0.00
6,900.0	41.88	332.65	6,206.1	-1,309.09	1,839.4	-951.3	-491.4	0.00	0.00	0.00
KOP (10°/100ft DGLG)										
6,995.9	41.88	332.65	6,277.5	-1,380.50	1,896.3	-980.7	-506.5	0.00	0.00	0.00
7,000.0	41.73	333.23	6,280.6	-1,383.55	1,898.7	-982.0	-507.2	10.12	-3.62	14.17
7,100.0	39.11	348.15	6,356.9	-1,459.86	1,959.5	-1,003.5	-513.8	10.00	-2.61	14.92
7,200.0	38.56	4.10	6,434.9	-1,537.94	2,021.6	-1,007.7	-503.3	10.00	-0.55	15.95
7,300.0	40.17	19.70	6,512.4	-1,615.44	2,083.2	-994.6	-476.0	10.00	1.60	15.59
7,400.0	43.68	33.74	6,587.0	-1,690.00	2,142.4	-964.5	-432.8	10.00	3.51	14.04
7,500.0	48.68	45.77	6,656.4	-1,759.35	2,197.5	-918.3	-374.9	10.00	5.00	12.03
SHARON SPRINGS										
7,583.9	53.71	54.40	6,709.0	-1,812.00	2,239.3	-868.1	-316.3	10.00	5.99	10.28
7,600.0	54.74	55.92	6,718.4	-1,821.38	2,246.7	-857.4	-304.2	10.00	6.41	9.46
NIOBRARA										
7,646.1	57.80	60.07	6,744.0	-1,847.00	2,267.0	-824.9	-267.8	10.00	6.63	9.01
7,700.0	61.53	64.58	6,771.2	-1,874.22	2,288.5	-783.7	-222.7	10.00	6.92	8.36
7,800.0	68.80	72.16	6,813.2	-1,916.24	2,321.8	-699.4	-132.9	10.00	7.27	7.58
7,900.0	76.37	79.01	6,843.2	-1,946.19	2,345.4	-607.1	-37.7	10.00	7.57	6.85
8,000.0	84.12	85.43	6,860.1	-1,963.14	2,358.6	-509.6	60.2	10.00	7.75	6.42
HZ LP: 54ft FNL & 2177ft FEL of Sec 5 - NIO B TARGET										
8,075.3	90.00	90.13	6,864.0	-1,967.00	2,361.5	-434.5	133.9	10.00	7.82	6.25
8,100.0	90.00	90.13	6,864.0	-1,967.00	2,361.5	-409.8	157.9	0.00	0.00	0.00
8,200.0	90.00	90.13	6,864.0	-1,967.00	2,361.2	-309.8	255.0	0.00	0.00	0.00
8,300.0	90.00	90.13	6,864.0	-1,967.00	2,361.0	-209.8	352.2	0.00	0.00	0.00
8,400.0	90.00	90.13	6,864.0	-1,967.00	2,360.8	-109.8	449.3	0.00	0.00	0.00
8,500.0	90.00	90.13	6,864.0	-1,967.00	2,360.5	-9.8	546.4	0.00	0.00	0.00
8,600.0	90.00	90.13	6,864.0	-1,967.00	2,360.3	90.2	643.6	0.00	0.00	0.00

Planning Report



Database:	EDM 5000.1 Single User Db	Local Co-ordinate Reference:	Well MICKEY 2
Company:	EXTRACTION OIL & GAS	TVD Reference:	KB-EST @ 4897.0usft
Project:	WELD COUNTY, COLORADO (NAD 83)	MD Reference:	KB-EST @ 4897.0usft
Site:	SW NE SEC. 5 T6N R67W 6th P.M.	North Reference:	True
Well:	MICKEY 2	Survey Calculation Method:	Minimum Curvature
Wellbore:	ORIGINAL WELLBORE		
Design:	PROPOSAL #2		

Planned Survey										
MD (usft)	Inc (°)	Azi (°)	TVD (usft)	SS (usft)	+N/-S (usft)	+E/-W (usft)	Vertical Section (usft)	Dogleg Rate (°/100usft)	Build Rate (°/100usft)	Turn Rate (°/100usft)
8,700.0	90.00	90.13	6,864.0	-1,967.00	2,360.1	190.2	740.7	0.00	0.00	0.00
8,800.0	90.00	90.13	6,864.0	-1,967.00	2,359.8	290.2	837.8	0.00	0.00	0.00
8,900.0	90.00	90.13	6,864.0	-1,967.00	2,359.6	390.2	935.0	0.00	0.00	0.00
9,000.0	90.00	90.13	6,864.0	-1,967.00	2,359.4	490.2	1,032.1	0.00	0.00	0.00
9,100.0	90.00	90.13	6,864.0	-1,967.00	2,359.2	590.2	1,129.2	0.00	0.00	0.00
9,200.0	90.00	90.13	6,864.0	-1,967.00	2,358.9	690.2	1,226.3	0.00	0.00	0.00
9,300.0	90.00	90.13	6,864.0	-1,967.00	2,358.7	790.2	1,323.5	0.00	0.00	0.00
9,400.0	90.00	90.13	6,864.0	-1,967.00	2,358.5	890.2	1,420.6	0.00	0.00	0.00
9,500.0	90.00	90.13	6,864.0	-1,967.00	2,358.2	990.2	1,517.7	0.00	0.00	0.00
9,600.0	90.00	90.13	6,864.0	-1,967.00	2,358.0	1,090.2	1,614.9	0.00	0.00	0.00
9,700.0	90.00	90.13	6,864.0	-1,967.00	2,357.8	1,190.2	1,712.0	0.00	0.00	0.00
9,800.0	90.00	90.13	6,864.0	-1,967.00	2,357.5	1,290.2	1,809.1	0.00	0.00	0.00
9,900.0	90.00	90.13	6,864.0	-1,967.00	2,357.3	1,390.2	1,906.3	0.00	0.00	0.00
10,000.0	90.00	90.13	6,864.0	-1,967.00	2,357.1	1,490.2	2,003.4	0.00	0.00	0.00
10,100.0	90.00	90.13	6,864.0	-1,967.00	2,356.8	1,590.2	2,100.5	0.00	0.00	0.00
10,200.0	90.00	90.13	6,864.0	-1,967.00	2,356.6	1,690.2	2,197.7	0.00	0.00	0.00
10,300.0	90.00	90.13	6,864.0	-1,967.00	2,356.4	1,790.2	2,294.8	0.00	0.00	0.00
10,400.0	90.00	90.13	6,864.0	-1,967.00	2,356.1	1,890.2	2,391.9	0.00	0.00	0.00
10,500.0	90.00	90.13	6,864.0	-1,967.00	2,355.9	1,990.2	2,489.1	0.00	0.00	0.00
10,600.0	90.00	90.13	6,864.0	-1,967.00	2,355.7	2,090.2	2,586.2	0.00	0.00	0.00
10,700.0	90.00	90.13	6,864.0	-1,967.00	2,355.4	2,190.2	2,683.3	0.00	0.00	0.00
10,800.0	90.00	90.13	6,864.0	-1,967.00	2,355.2	2,290.2	2,780.5	0.00	0.00	0.00
10,900.0	90.00	90.13	6,864.0	-1,967.00	2,355.0	2,390.2	2,877.6	0.00	0.00	0.00
11,000.0	90.00	90.13	6,864.0	-1,967.00	2,354.7	2,490.2	2,974.7	0.00	0.00	0.00
11,100.0	90.00	90.13	6,864.0	-1,967.00	2,354.5	2,590.2	3,071.9	0.00	0.00	0.00
11,200.0	90.00	90.13	6,864.0	-1,967.00	2,354.3	2,690.2	3,169.0	0.00	0.00	0.00
11,300.0	90.00	90.13	6,864.0	-1,967.00	2,354.0	2,790.2	3,266.1	0.00	0.00	0.00
11,400.0	90.00	90.13	6,864.0	-1,967.00	2,353.8	2,890.2	3,363.3	0.00	0.00	0.00
11,500.0	90.00	90.13	6,864.0	-1,967.00	2,353.6	2,990.2	3,460.4	0.00	0.00	0.00
11,600.0	90.00	90.13	6,864.0	-1,967.00	2,353.3	3,090.2	3,557.5	0.00	0.00	0.00
11,700.0	90.00	90.13	6,864.0	-1,967.00	2,353.1	3,190.2	3,654.6	0.00	0.00	0.00
11,800.0	90.00	90.13	6,864.0	-1,967.00	2,352.9	3,290.2	3,751.8	0.00	0.00	0.00
11,900.0	90.00	90.13	6,864.0	-1,967.00	2,352.6	3,390.2	3,848.9	0.00	0.00	0.00
12,000.0	90.00	90.13	6,864.0	-1,967.00	2,352.4	3,490.2	3,946.0	0.00	0.00	0.00
12,100.0	90.00	90.13	6,864.0	-1,967.00	2,352.2	3,590.2	4,043.2	0.00	0.00	0.00
12,200.0	90.00	90.13	6,864.0	-1,967.00	2,351.9	3,690.2	4,140.3	0.00	0.00	0.00
12,300.0	90.00	90.13	6,864.0	-1,967.00	2,351.7	3,790.2	4,237.4	0.00	0.00	0.00
12,400.0	90.00	90.13	6,864.0	-1,967.00	2,351.5	3,890.2	4,334.6	0.00	0.00	0.00
12,500.0	90.00	90.13	6,864.0	-1,967.00	2,351.2	3,990.2	4,431.7	0.00	0.00	0.00
12,600.0	90.00	90.13	6,864.0	-1,967.00	2,351.0	4,090.2	4,528.8	0.00	0.00	0.00
12,700.0	90.00	90.13	6,864.0	-1,967.00	2,350.8	4,190.2	4,626.0	0.00	0.00	0.00
12,800.0	90.00	90.13	6,864.0	-1,967.00	2,350.5	4,290.2	4,723.1	0.00	0.00	0.00
12,900.0	90.00	90.13	6,864.0	-1,967.00	2,350.3	4,390.2	4,820.2	0.00	0.00	0.00
13,000.0	90.00	90.13	6,864.0	-1,967.00	2,350.1	4,490.2	4,917.4	0.00	0.00	0.00
13,100.0	90.00	90.13	6,864.0	-1,967.00	2,349.8	4,590.2	5,014.5	0.00	0.00	0.00
13,200.0	90.00	90.13	6,864.0	-1,967.00	2,349.6	4,690.2	5,111.6	0.00	0.00	0.00
13,300.0	90.00	90.13	6,864.0	-1,967.00	2,349.4	4,790.2	5,208.8	0.00	0.00	0.00
13,400.0	90.00	90.13	6,864.0	-1,967.00	2,349.1	4,890.2	5,305.9	0.00	0.00	0.00
13,500.0	90.00	90.13	6,864.0	-1,967.00	2,348.9	4,990.2	5,403.0	0.00	0.00	0.00
13,600.0	90.00	90.13	6,864.0	-1,967.00	2,348.7	5,090.2	5,500.2	0.00	0.00	0.00
13,700.0	90.00	90.13	6,864.0	-1,967.00	2,348.4	5,190.2	5,597.3	0.00	0.00	0.00
13,800.0	90.00	90.13	6,864.0	-1,967.00	2,348.2	5,290.2	5,694.4	0.00	0.00	0.00
13,900.0	90.00	90.13	6,864.0	-1,967.00	2,347.9	5,390.2	5,791.5	0.00	0.00	0.00
14,000.0	90.00	90.13	6,864.0	-1,967.00	2,347.7	5,490.2	5,888.7	0.00	0.00	0.00

Planning Report



Database:	EDM 5000.1 Single User Db	Local Co-ordinate Reference:	Well MICKEY 2
Company:	EXTRACTION OIL & GAS	TVD Reference:	KB-EST @ 4897.0usft
Project:	WELD COUNTY, COLORADO (NAD 83)	MD Reference:	KB-EST @ 4897.0usft
Site:	SW NE SEC. 5 T6N R67W 6th P.M.	North Reference:	True
Well:	MICKEY 2	Survey Calculation Method:	Minimum Curvature
Wellbore:	ORIGINAL WELLBORE		
Design:	PROPOSAL #2		

Planned Survey

MD (usft)	Inc (°)	Azi (°)	TVD (usft)	SS (usft)	+N/-S (usft)	+E/-W (usft)	Vertical Section (usft)	Dogleg Rate (°/100usft)	Build Rate (°/100usft)	Turn Rate (°/100usft)
14,100.0	90.00	90.13	6,864.0	-1,967.00	2,347.5	5,590.2	5,985.8	0.00	0.00	0.00
14,200.0	90.00	90.13	6,864.0	-1,967.00	2,347.2	5,690.2	6,082.9	0.00	0.00	0.00
14,300.0	90.00	90.13	6,864.0	-1,967.00	2,347.0	5,790.2	6,180.1	0.00	0.00	0.00
14,400.0	90.00	90.13	6,864.0	-1,967.00	2,346.8	5,890.2	6,277.2	0.00	0.00	0.00
14,500.0	90.00	90.13	6,864.0	-1,967.00	2,346.5	5,990.2	6,374.3	0.00	0.00	0.00
14,600.0	90.00	90.13	6,864.0	-1,967.00	2,346.3	6,090.2	6,471.5	0.00	0.00	0.00
14,700.0	90.00	90.13	6,864.0	-1,967.00	2,346.1	6,190.2	6,568.6	0.00	0.00	0.00
14,800.0	90.00	90.13	6,864.0	-1,967.00	2,345.8	6,290.2	6,665.7	0.00	0.00	0.00
14,900.0	90.00	90.13	6,864.0	-1,967.00	2,345.6	6,390.2	6,762.9	0.00	0.00	0.00
15,000.0	90.00	90.13	6,864.0	-1,967.00	2,345.4	6,490.2	6,860.0	0.00	0.00	0.00
15,100.0	90.00	90.13	6,864.0	-1,967.00	2,345.1	6,590.2	6,957.1	0.00	0.00	0.00
15,200.0	90.00	90.13	6,864.0	-1,967.00	2,344.9	6,690.2	7,054.3	0.00	0.00	0.00
15,300.0	90.00	90.13	6,864.0	-1,967.00	2,344.7	6,790.2	7,151.4	0.00	0.00	0.00
15,400.0	90.00	90.13	6,864.0	-1,967.00	2,344.4	6,890.2	7,248.5	0.00	0.00	0.00
15,500.0	90.00	90.13	6,864.0	-1,967.00	2,344.2	6,990.2	7,345.7	0.00	0.00	0.00
15,600.0	90.00	90.13	6,864.0	-1,967.00	2,344.0	7,090.2	7,442.8	0.00	0.00	0.00
15,700.0	90.00	90.14	6,864.0	-1,967.00	2,343.7	7,190.2	7,539.9	0.00	0.00	0.00
15,800.0	90.00	90.14	6,864.0	-1,967.00	2,343.5	7,290.2	7,637.0	0.00	0.00	0.00
15,900.0	90.00	90.14	6,864.0	-1,967.00	2,343.2	7,390.2	7,734.2	0.00	0.00	0.00
16,000.0	90.00	90.14	6,864.0	-1,967.00	2,343.0	7,490.2	7,831.3	0.00	0.00	0.00
16,100.0	90.00	90.14	6,864.0	-1,967.00	2,342.8	7,590.2	7,928.4	0.00	0.00	0.00
16,200.0	90.00	90.14	6,864.0	-1,967.00	2,342.5	7,690.2	8,025.6	0.00	0.00	0.00
16,300.0	90.00	90.14	6,864.0	-1,967.00	2,342.3	7,790.2	8,122.7	0.00	0.00	0.00
16,400.0	90.00	90.14	6,864.0	-1,967.00	2,342.1	7,890.2	8,219.8	0.00	0.00	0.00
16,500.0	90.00	90.14	6,864.0	-1,967.00	2,341.8	7,990.2	8,317.0	0.00	0.00	0.00
16,600.0	90.00	90.14	6,864.0	-1,967.00	2,341.6	8,090.2	8,414.1	0.00	0.00	0.00
16,700.0	90.00	90.14	6,864.0	-1,967.00	2,341.4	8,190.2	8,511.2	0.00	0.00	0.00
16,800.0	90.00	90.14	6,864.0	-1,967.00	2,341.1	8,290.2	8,608.4	0.00	0.00	0.00
16,900.0	90.00	90.14	6,864.0	-1,967.00	2,340.9	8,390.2	8,705.5	0.00	0.00	0.00
17,000.0	90.00	90.14	6,864.0	-1,967.00	2,340.6	8,490.2	8,802.6	0.00	0.00	0.00
17,100.0	90.00	90.14	6,864.0	-1,967.00	2,340.4	8,590.2	8,899.8	0.00	0.00	0.00
17,200.0	90.00	90.14	6,864.0	-1,967.00	2,340.2	8,690.2	8,996.9	0.00	0.00	0.00
17,300.0	90.00	90.14	6,864.0	-1,967.00	2,339.9	8,790.2	9,094.0	0.00	0.00	0.00
17,400.0	90.00	90.14	6,864.0	-1,967.00	2,339.7	8,890.2	9,191.1	0.00	0.00	0.00
17,500.0	90.00	90.14	6,864.0	-1,967.00	2,339.5	8,990.2	9,288.3	0.00	0.00	0.00
17,600.0	90.00	90.14	6,864.0	-1,967.00	2,339.2	9,090.2	9,385.4	0.00	0.00	0.00
17,700.0	90.00	90.14	6,864.0	-1,967.00	2,339.0	9,190.2	9,482.5	0.00	0.00	0.00
17,800.0	90.00	90.14	6,864.0	-1,967.00	2,338.8	9,290.2	9,579.7	0.00	0.00	0.00
17,900.0	90.00	90.14	6,864.0	-1,967.00	2,338.5	9,390.2	9,676.8	0.00	0.00	0.00
18,000.0	90.00	90.14	6,864.0	-1,967.00	2,338.3	9,490.2	9,773.9	0.00	0.00	0.00
18,100.0	90.00	90.14	6,864.0	-1,967.00	2,338.0	9,590.2	9,871.1	0.00	0.00	0.00
BHL: 141ft FNL & 2632ft FEL of Sec 3										
18,157.5	90.00	90.14	6,864.0	-1,967.00	2,337.9	9,647.7	9,926.9	0.00	0.00	0.00

Database:	EDM 5000.1 Single User Db	Local Co-ordinate Reference:	Well MICKEY 2
Company:	EXTRACTION OIL & GAS	TVD Reference:	KB-EST @ 4897.0usft
Project:	WELD COUNTY, COLORADO (NAD 83)	MD Reference:	KB-EST @ 4897.0usft
Site:	SW NE SEC. 5 T6N R67W 6th P.M.	North Reference:	True
Well:	MICKEY 2	Survey Calculation Method:	Minimum Curvature
Wellbore:	ORIGINAL WELLBORE		
Design:	PROPOSAL #2		

Formations						
MD (usft)	TVD (usft)	Name	Lithology	Dip (°)	Dip Direction (°)	
3,357.5	3,354.0	PARKMAN				
3,987.7	3,954.0	SUSSEX				
4,454.4	4,364.0	SHANNON				
7,583.9	6,709.0	SHARON SPRINGS				
7,646.1	6,744.0	NIOBRARA				
8,075.3	6,864.0	NIO B TARGET				

Plan Annotations				
MD (usft)	TVD (usft)	Local Coordinates		Comment
		+N/-S (usft)	+E/-W (usft)	
0.0	0.0	0.0	0.0	SHL: 2419ft FNL & 1783ft FEL of Sec 5
1,600.0	1,600.0	0.0	0.0	9 5/8" SURFACE CASING
2,800.0	2,800.0	0.0	0.0	START NUDGE (2°/100ft BUR)
4,893.8	4,712.3	649.9	-336.1	EOB TO 41.88° INC
6,995.9	6,277.5	1,896.3	-980.7	KOP (10°/100ft DGLG)
8,075.3	6,864.0	2,361.5	-434.5	HZ LP: 54ft FNL & 2177ft FEL of Sec 5
18,157.5	6,864.0	2,337.9	9,647.7	BHL: 141ft FNL & 2632ft FEL of Sec 3