

# **EXTRACTION OIL & GAS**

**WELD COUNTY, COLORADO (NAD 83)**

**SW NE SEC. 5 T6N R67W 6th P.M.**

**MICKEY 12**

**ORIGINAL WELLBORE**

**07 October, 2016**

**Plan: PROPOSAL #2**

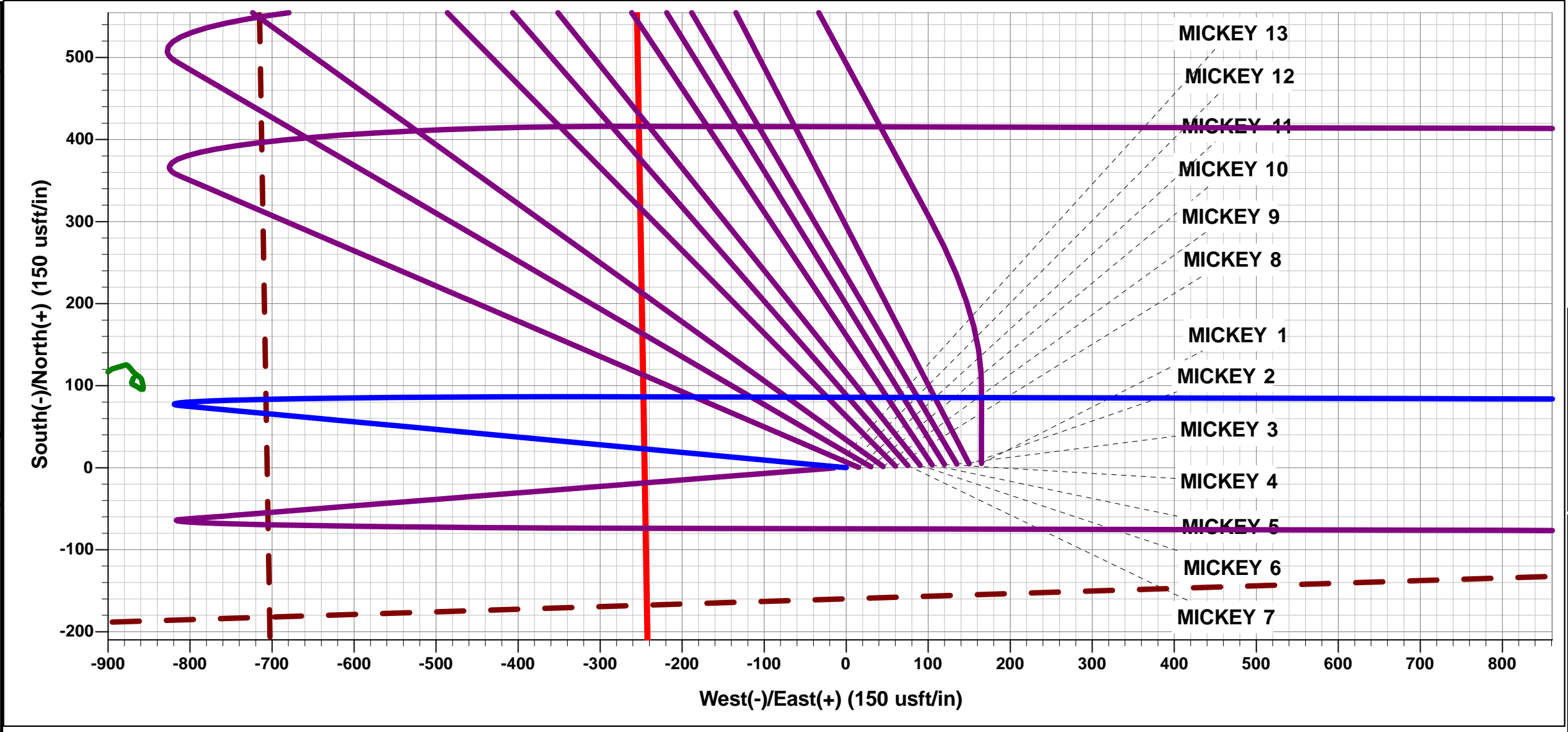




Project: WELD COUNTY, COLORADO (NAD 83)  
Site: SW NE SEC. 5 T6N R67W 6th P.M.  
Well: MICKEY 12  
Wellbore: ORIGINAL WELLBORE  
Design: PROPOSAL #2

ANNOTATIONS									
TVD	MD	Inc	Azi	+N/-S	+E/-W	VSect	Dep	Annotation	
0.0	0.0	0.00	0.00	0.0	0.0	0.0	0.0	SHL: 2422ft FNL & 1933ft FEL of Sec 5	
1600.0	1600.0	0.00	0.00	0.0	0.0	0.0	0.0	9 5/8" SURFACE CASING	
1800.0	1800.0	0.00	0.00	0.0	0.0	0.0	0.0	START NUDGE (2°/100ft BUR)	
2356.8	2360.4	11.21	275.33	5.1	-54.4	-54.4	54.6	EOB TO 11.21° INC	
6180.2	6258.1	11.21	275.33	75.4	-808.8	-808.3	812.3	KOP (10°/100ft DGLG)	
6864.0	7269.8	90.00	90.13	86.4	-246.6	-246.0	1397.8	HZ LP: 2334ft FNL & 2178ft FEL of Sec 5	
6864.0	17327.9	90.00	90.13	62.9	9811.5	9811.7	11455.9	BHL: 2421ft FNL & 2617ft FEL of Sec 3	

WELLBORE TARGET DETAILS (LAT/LONG)					
Name	TVD	+N/-S	+E/-W	Latitude	Longitude
HZ LP - MICKEY 12	6864.0	86.4	-246.6	40.516627	-104.915682
BHL - MICKEY 12	6864.0	62.8	9811.5	40.516557	-104.879507



FORMATION TOP DETAILS		
TVDPath	MDPath	Formation
3354.0	3377.0	PARKMAN
3954.0	3988.6	SUSSEX
4364.0	4406.6	SHANNON
6709.0	6838.2	SHARON SPRINGS
6744.0	6892.1	NIOBRARA
6864.0	7269.8	NIO B TARGET

PROPOSED LOCAL COORDINATES	
SHL: 2422ft FNL & 1933ft FEL of Sec 5	
LP: 2334ft FNL & 2178ft FEL of Sec 5	
BHL: 2421ft FNL & 2617ft FEL of Sec 3	

T

M

Azimuths to True North

Magnetic North: 8.39°

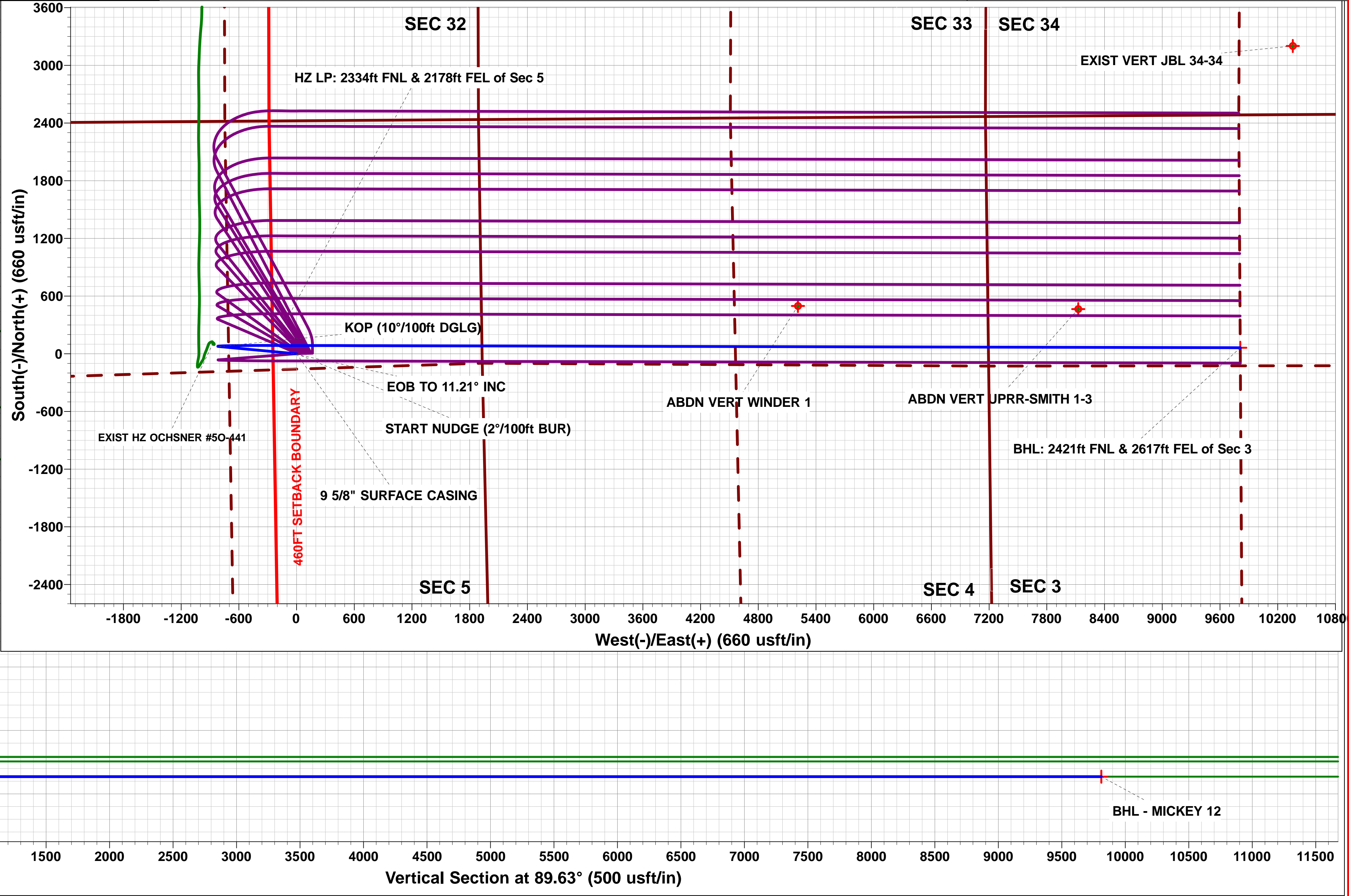
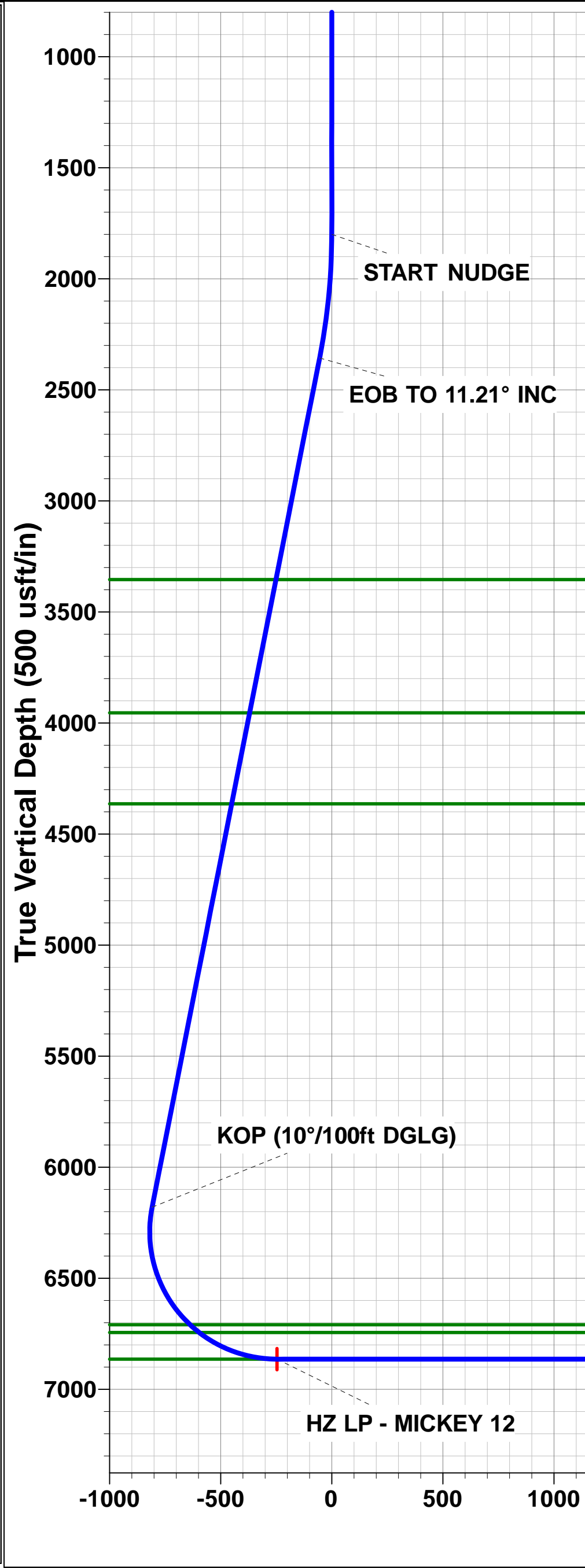
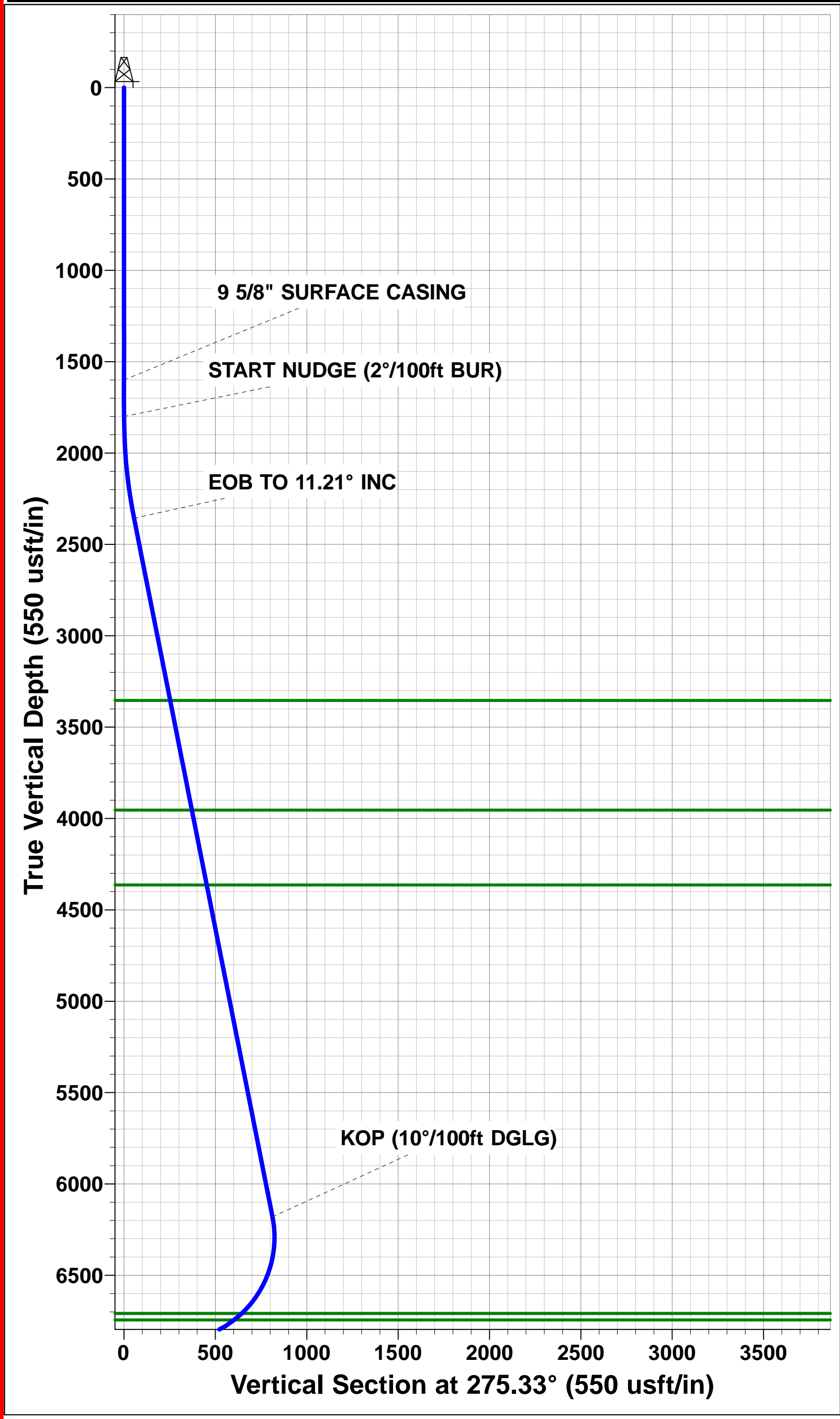
Magnetic Field

Strength: 52532.6snT

Dip Angle: 66.95°

Date: 13/08/2016

Model: IGRF2015



# Planning Report



<b>Database:</b>	EDM 5000.1 Single User Db	<b>Local Co-ordinate Reference:</b>	Well MICKEY 12
<b>Company:</b>	EXTRACTION OIL & GAS	<b>TVD Reference:</b>	KB-EST @ 4896.0usft
<b>Project:</b>	WELD COUNTY, COLORADO (NAD 83)	<b>MD Reference:</b>	KB-EST @ 4896.0usft
<b>Site:</b>	SW NE SEC. 5 T6N R67W 6th P.M.	<b>North Reference:</b>	True
<b>Well:</b>	MICKEY 12	<b>Survey Calculation Method:</b>	Minimum Curvature
<b>Wellbore:</b>	ORIGINAL WELLBORE		
<b>Design:</b>	PROPOSAL #2		

<b>Project</b>	WELD COUNTY, COLORADO (NAD 83)		
<b>Map System:</b>	US State Plane 1983	<b>System Datum:</b>	Mean Sea Level
<b>Geo Datum:</b>	North American Datum 1983		
<b>Map Zone:</b>	Colorado Northern Zone		Using geodetic scale factor

<b>Site</b>	SW NE SEC. 5 T6N R67W 6th P.M.		
<b>Site Position:</b>		<b>Northing:</b>	1,431,152.83 usft
<b>From:</b>	Lat/Long	<b>Easting:</b>	3,162,171.69 usft
<b>Position Uncertainty:</b>	0.0 usft	<b>Slot Radius:</b>	1.10000ft
		<b>Latitude:</b>	40.515451
		<b>Longitude:</b>	-104.916720
		<b>Grid Convergence:</b>	0.38 °

<b>Well</b>	MICKEY 12		
<b>Well Position</b>	<b>+N/-S</b>	342.0 usft	<b>Northing:</b>
	<b>+E/-W</b>	535.2 usft	<b>Easting:</b>
<b>Position Uncertainty</b>	0.0 usft		<b>Wellhead Elevation:</b>
			<b>Latitude:</b>
			<b>Longitude:</b>
			<b>Ground Level:</b>

<b>Wellbore</b>	ORIGINAL WELLBORE				
<b>Magnetics</b>	<b>Model Name</b>	<b>Sample Date</b>	<b>Declination (°)</b>	<b>Dip Angle (°)</b>	<b>Field Strength (nT)</b>
	IGRF2015	13/08/2016	8.39	66.95	52,533

<b>Design</b>	PROPOSAL #2			
<b>Audit Notes:</b>				
<b>Version:</b>	<b>Phase:</b>	PROTOTYPE	<b>Tie On Depth:</b>	0.0
<b>Vertical Section:</b>	<b>Depth From (TVD) (usft)</b>	<b>+N/-S (usft)</b>	<b>+E/-W (usft)</b>	<b>Direction (°)</b>
	0.0	0.0	0.0	89.63

<b>Plan Sections</b>											
MD (usft)	Inc (°)	Azi (°)	Vertical Depth	SS (usft)	+N/-S (usft)	+E/-W (usft)	Dogleg Rate (°/100usf)	Build Rate (°/100usf)	Turn Rate (°/100usf)	TFO (°)	Target
0.0	0.00	0.00	0.0	-4,896.0	0.0	0.0	0.00	0.00	0.00	0.00	
1,800.0	0.00	0.00	1,800.0	-3,096.0	0.0	0.0	0.00	0.00	0.00	0.00	
2,360.4	11.21	275.33	2,356.9	-2,539.1	5.1	-54.4	2.00	2.00	0.00	275.33	
6,258.1	11.21	275.33	6,180.2	1,284.2	75.4	-808.8	0.00	0.00	0.00	0.00	
7,269.8	90.00	90.13	6,864.0	1,968.0	86.4	-246.6	10.00	7.79	17.28	174.71	HZ LP - MICKEY 12
17,327.9	90.00	90.13	6,864.0	1,968.0	62.8	9,811.5	0.00	0.00	0.00	0.00	BHL - MICKEY 12

<b>Database:</b>	EDM 5000.1 Single User Db	<b>Local Co-ordinate Reference:</b>	Well MICKEY 12
<b>Company:</b>	EXTRACTION OIL & GAS	<b>TVD Reference:</b>	KB-EST @ 4896.0usft
<b>Project:</b>	WELD COUNTY, COLORADO (NAD 83)	<b>MD Reference:</b>	KB-EST @ 4896.0usft
<b>Site:</b>	SW NE SEC. 5 T6N R67W 6th P.M.	<b>North Reference:</b>	True
<b>Well:</b>	MICKEY 12	<b>Survey Calculation Method:</b>	Minimum Curvature
<b>Wellbore:</b>	ORIGINAL WELLBORE		
<b>Design:</b>	PROPOSAL #2		

## Planned Survey

MD (usft)	Inc (°)	Azi (°)	TVD (usft)	SS (usft)	+N/-S (usft)	+E/-W (usft)	Vertical Section (usft)	Dogleg Rate (°/100usft)	Build Rate (°/100usft)	Turn Rate (°/100usft)
<b>SHL: 2422ft FNL &amp; 1933ft FEL of Sec 5</b>										
0.0	0.00	0.00	0.0	4,896.00	0.0	0.0	0.0	0.00	0.00	0.00
100.0	0.00	0.00	100.0	4,796.00	0.0	0.0	0.0	0.00	0.00	0.00
200.0	0.00	0.00	200.0	4,696.00	0.0	0.0	0.0	0.00	0.00	0.00
300.0	0.00	0.00	300.0	4,596.00	0.0	0.0	0.0	0.00	0.00	0.00
400.0	0.00	0.00	400.0	4,496.00	0.0	0.0	0.0	0.00	0.00	0.00
500.0	0.00	0.00	500.0	4,396.00	0.0	0.0	0.0	0.00	0.00	0.00
600.0	0.00	0.00	600.0	4,296.00	0.0	0.0	0.0	0.00	0.00	0.00
700.0	0.00	0.00	700.0	4,196.00	0.0	0.0	0.0	0.00	0.00	0.00
800.0	0.00	0.00	800.0	4,096.00	0.0	0.0	0.0	0.00	0.00	0.00
900.0	0.00	0.00	900.0	3,996.00	0.0	0.0	0.0	0.00	0.00	0.00
1,000.0	0.00	0.00	1,000.0	3,896.00	0.0	0.0	0.0	0.00	0.00	0.00
1,100.0	0.00	0.00	1,100.0	3,796.00	0.0	0.0	0.0	0.00	0.00	0.00
1,200.0	0.00	0.00	1,200.0	3,696.00	0.0	0.0	0.0	0.00	0.00	0.00
1,300.0	0.00	0.00	1,300.0	3,596.00	0.0	0.0	0.0	0.00	0.00	0.00
1,400.0	0.00	0.00	1,400.0	3,496.00	0.0	0.0	0.0	0.00	0.00	0.00
1,500.0	0.00	0.00	1,500.0	3,396.00	0.0	0.0	0.0	0.00	0.00	0.00
<b>9 5/8" SURFACE CASING</b>										
1,600.0	0.00	0.00	1,600.0	3,296.00	0.0	0.0	0.0	0.00	0.00	0.00
1,700.0	0.00	0.00	1,700.0	3,196.00	0.0	0.0	0.0	0.00	0.00	0.00
<b>START NUDGE (2°/100ft BUR)</b>										
1,800.0	0.00	0.00	1,800.0	3,096.00	0.0	0.0	0.0	0.00	0.00	0.00
1,900.0	2.00	275.33	1,900.0	2,996.02	0.2	-1.7	-1.7	2.00	2.00	0.00
2,000.0	4.00	275.33	1,999.8	2,896.16	0.6	-6.9	-6.9	2.00	2.00	0.00
2,100.0	6.00	275.33	2,099.5	2,796.55	1.5	-15.6	-15.6	2.00	2.00	0.00
2,200.0	8.00	275.33	2,198.7	2,697.30	2.6	-27.8	-27.7	2.00	2.00	0.00
2,300.0	10.00	275.33	2,297.5	2,598.53	4.0	-43.3	-43.3	2.00	2.00	0.00
<b>EOB TO 11.21° INC</b>										
2,360.4	11.21	275.33	2,356.8	2,539.17	5.1	-54.4	-54.4	2.00	2.00	0.00
2,400.0	11.21	275.33	2,395.7	2,500.32	5.8	-62.1	-62.0	0.00	0.00	0.00
2,500.0	11.21	275.33	2,493.8	2,402.23	7.6	-81.4	-81.4	0.00	0.00	0.00
2,600.0	11.21	275.33	2,591.9	2,304.14	9.4	-100.8	-100.7	0.00	0.00	0.00
2,700.0	11.21	275.33	2,690.0	2,206.04	11.2	-120.1	-120.1	0.00	0.00	0.00
2,800.0	11.21	275.33	2,788.0	2,107.95	13.0	-139.5	-139.4	0.00	0.00	0.00
2,900.0	11.21	275.33	2,886.1	2,009.86	14.8	-158.8	-158.7	0.00	0.00	0.00
3,000.0	11.21	275.33	2,984.2	1,911.77	16.6	-178.2	-178.1	0.00	0.00	0.00
3,100.0	11.21	275.33	3,082.3	1,813.67	18.4	-197.5	-197.4	0.00	0.00	0.00
3,200.0	11.21	275.33	3,180.4	1,715.58	20.2	-216.9	-216.8	0.00	0.00	0.00
3,300.0	11.21	275.33	3,278.5	1,617.49	22.0	-236.3	-236.1	0.00	0.00	0.00
<b>PARKMAN</b>										
3,377.0	11.21	275.33	3,354.0	1,542.00	23.4	-251.1	-251.0	0.00	0.00	0.00
3,400.0	11.21	275.33	3,376.6	1,519.40	23.8	-255.6	-255.4	0.00	0.00	0.00
3,500.0	11.21	275.33	3,474.7	1,421.30	25.6	-275.0	-274.8	0.00	0.00	0.00
3,600.0	11.21	275.33	3,572.8	1,323.21	27.4	-294.3	-294.1	0.00	0.00	0.00
3,700.0	11.21	275.33	3,670.9	1,225.12	29.2	-313.7	-313.5	0.00	0.00	0.00
3,800.0	11.21	275.33	3,769.0	1,127.03	31.0	-333.0	-332.8	0.00	0.00	0.00
3,900.0	11.21	275.33	3,867.1	1,028.93	32.9	-352.4	-352.2	0.00	0.00	0.00
<b>SUSSEX</b>										
3,988.6	11.21	275.33	3,954.0	942.00	34.4	-369.5	-369.3	0.00	0.00	0.00
4,000.0	11.21	275.33	3,965.2	930.84	34.7	-371.7	-371.5	0.00	0.00	0.00
4,100.0	11.21	275.33	4,063.3	832.75	36.5	-391.1	-390.8	0.00	0.00	0.00
4,200.0	11.21	275.33	4,161.3	734.65	38.3	-410.4	-410.2	0.00	0.00	0.00
4,300.0	11.21	275.33	4,259.4	636.56	40.1	-429.8	-429.5	0.00	0.00	0.00

<b>Database:</b>	EDM 5000.1 Single User Db	<b>Local Co-ordinate Reference:</b>	Well MICKEY 12
<b>Company:</b>	EXTRACTION OIL & GAS	<b>TVD Reference:</b>	KB-EST @ 4896.0usft
<b>Project:</b>	WELD COUNTY, COLORADO (NAD 83)	<b>MD Reference:</b>	KB-EST @ 4896.0usft
<b>Site:</b>	SW NE SEC. 5 T6N R67W 6th P.M.	<b>North Reference:</b>	True
<b>Well:</b>	MICKEY 12	<b>Survey Calculation Method:</b>	Minimum Curvature
<b>Wellbore:</b>	ORIGINAL WELLBORE		
<b>Design:</b>	PROPOSAL #2		

## Planned Survey

MD (usft)	Inc (°)	Azi (°)	TVD (usft)	SS (usft)	+N/-S (usft)	+E/-W (usft)	Vertical Section (usft)	Dogleg Rate (°/100usft)	Build Rate (°/100usft)	Turn Rate (°/100usft)
4,400.0	11.21	275.33	4,357.5	538.47	41.9	-449.1	-448.9	0.00	0.00	0.00
<b>SHANNON</b>										
<b>4,406.6</b>	<b>11.21</b>	<b>275.33</b>	<b>4,364.0</b>	<b>532.00</b>	<b>42.0</b>	<b>-450.4</b>	<b>-450.1</b>	<b>0.00</b>	<b>0.00</b>	<b>0.00</b>
4,500.0	11.21	275.33	4,455.6	440.38	43.7	-468.5	-468.2	0.00	0.00	0.00
4,600.0	11.21	275.33	4,553.7	342.28	45.5	-487.9	-487.6	0.00	0.00	0.00
4,700.0	11.21	275.33	4,651.8	244.19	47.3	-507.2	-506.9	0.00	0.00	0.00
4,800.0	11.21	275.33	4,749.9	146.10	49.1	-526.6	-526.2	0.00	0.00	0.00
4,900.0	11.21	275.33	4,848.0	48.01	50.9	-545.9	-545.6	0.00	0.00	0.00
5,000.0	11.21	275.33	4,946.1	-50.09	52.7	-565.3	-564.9	0.00	0.00	0.00
5,100.0	11.21	275.33	5,044.2	-148.18	54.5	-584.6	-584.3	0.00	0.00	0.00
5,200.0	11.21	275.33	5,142.3	-246.27	56.3	-604.0	-603.6	0.00	0.00	0.00
5,300.0	11.21	275.33	5,240.4	-344.36	58.1	-623.3	-622.9	0.00	0.00	0.00
5,400.0	11.21	275.33	5,338.5	-442.46	59.9	-642.7	-642.3	0.00	0.00	0.00
5,500.0	11.21	275.33	5,436.5	-540.55	61.7	-662.0	-661.6	0.00	0.00	0.00
5,600.0	11.21	275.33	5,534.6	-638.64	63.5	-681.4	-681.0	0.00	0.00	0.00
5,700.0	11.21	275.33	5,632.7	-736.74	65.3	-700.7	-700.3	0.00	0.00	0.00
5,800.0	11.21	275.33	5,730.8	-834.83	67.1	-720.1	-719.7	0.00	0.00	0.00
5,900.0	11.21	275.33	5,828.9	-932.92	68.9	-739.5	-739.0	0.00	0.00	0.00
6,000.0	11.21	275.33	5,927.0	-1,031.01	70.7	-758.8	-758.3	0.00	0.00	0.00
6,100.0	11.21	275.33	6,025.1	-1,129.11	72.5	-778.2	-777.7	0.00	0.00	0.00
6,200.0	11.21	275.33	6,123.2	-1,227.20	74.3	-797.5	-797.0	0.00	0.00	0.00
<b>KOP (10°/100ft DGLG)</b>										
<b>6,258.1</b>	<b>11.21</b>	<b>275.33</b>	<b>6,180.2</b>	<b>-1,284.19</b>	<b>75.4</b>	<b>-808.8</b>	<b>-808.3</b>	<b>0.00</b>	<b>0.00</b>	<b>0.00</b>
6,300.0	7.05	278.47	6,221.6	-1,325.55	76.2	-815.4	-814.9	9.99	-9.92	7.50
6,400.0	3.19	71.38	6,321.3	-1,425.35	78.0	-818.8	-818.3	10.00	-3.86	152.91
6,500.0	13.06	85.70	6,420.2	-1,524.23	79.7	-804.9	-804.3	10.00	9.87	14.32
6,600.0	23.04	87.72	6,515.2	-1,619.18	81.3	-774.0	-773.4	10.00	9.98	2.02
6,700.0	33.04	88.55	6,603.3	-1,707.33	82.8	-727.0	-726.5	10.00	9.99	0.84
6,800.0	43.03	89.03	6,682.0	-1,786.00	84.1	-665.5	-665.0	10.00	10.00	0.48
<b>SHARON SPRINGS</b>										
<b>6,838.2</b>	<b>46.85</b>	<b>89.17</b>	<b>6,709.0</b>	<b>-1,813.00</b>	<b>84.5</b>	<b>-638.6</b>	<b>-638.0</b>	<b>10.00</b>	<b>10.00</b>	<b>0.36</b>
<b>NIORARA</b>										
<b>6,892.1</b>	<b>52.24</b>	<b>89.34</b>	<b>6,744.0</b>	<b>-1,848.00</b>	<b>85.0</b>	<b>-597.5</b>	<b>-597.0</b>	<b>10.00</b>	<b>10.00</b>	<b>0.31</b>
6,900.0	53.03	89.36	6,748.8	-1,852.79	85.1	-591.3	-590.7	10.00	10.00	0.28
7,000.0	63.03	89.61	6,801.7	-1,905.67	85.8	-506.5	-506.0	10.00	10.00	0.25
7,100.0	73.03	89.82	6,839.0	-1,943.04	86.3	-413.9	-413.4	10.00	10.00	0.21
7,200.0	83.02	90.01	6,859.8	-1,963.76	86.4	-316.2	-315.7	10.00	10.00	0.19
<b>HZ LP: 2334ft FNL &amp; 2178ft FEL of Sec 5 - NIO B TARGET</b>										
<b>7,269.8</b>	<b>90.00</b>	<b>90.13</b>	<b>6,864.0</b>	<b>-1,968.00</b>	<b>86.4</b>	<b>-246.6</b>	<b>-246.1</b>	<b>10.00</b>	<b>10.00</b>	<b>0.18</b>
7,300.0	90.00	90.13	6,864.0	-1,968.00	86.3	-216.4	-215.8	0.00	0.00	0.00
7,400.0	90.00	90.13	6,864.0	-1,968.00	86.0	-116.4	-115.8	0.00	0.00	0.00
7,500.0	90.00	90.13	6,864.0	-1,968.00	85.8	-16.4	-15.8	0.00	0.00	0.00
7,600.0	90.00	90.13	6,864.0	-1,968.00	85.6	83.6	84.2	0.00	0.00	0.00
7,700.0	90.00	90.13	6,864.0	-1,968.00	85.4	183.6	184.2	0.00	0.00	0.00
7,800.0	90.00	90.13	6,864.0	-1,968.00	85.1	283.6	284.1	0.00	0.00	0.00
7,900.0	90.00	90.13	6,864.0	-1,968.00	84.9	383.6	384.1	0.00	0.00	0.00
8,000.0	90.00	90.13	6,864.0	-1,968.00	84.7	483.6	484.1	0.00	0.00	0.00
8,100.0	90.00	90.13	6,864.0	-1,968.00	84.4	583.6	584.1	0.00	0.00	0.00
8,200.0	90.00	90.13	6,864.0	-1,968.00	84.2	683.6	684.1	0.00	0.00	0.00
8,300.0	90.00	90.13	6,864.0	-1,968.00	84.0	783.6	784.1	0.00	0.00	0.00
8,400.0	90.00	90.13	6,864.0	-1,968.00	83.7	883.6	884.1	0.00	0.00	0.00
8,500.0	90.00	90.13	6,864.0	-1,968.00	83.5	983.6	984.1	0.00	0.00	0.00
8,600.0	90.00	90.13	6,864.0	-1,968.00	83.3	1,083.6	1,084.1	0.00	0.00	0.00



# Planning Report



<b>Database:</b>	EDM 5000.1 Single User Db	<b>Local Co-ordinate Reference:</b>	Well MICKEY 12
<b>Company:</b>	EXTRACTION OIL & GAS	<b>TVD Reference:</b>	KB-EST @ 4896.0usft
<b>Project:</b>	WELD COUNTY, COLORADO (NAD 83)	<b>MD Reference:</b>	KB-EST @ 4896.0usft
<b>Site:</b>	SW NE SEC. 5 T6N R67W 6th P.M.	<b>North Reference:</b>	True
<b>Well:</b>	MICKEY 12	<b>Survey Calculation Method:</b>	Minimum Curvature
<b>Wellbore:</b>	ORIGINAL WELLBORE		
<b>Design:</b>	PROPOSAL #2		

Planned Survey										
MD (usft)	Inc (°)	Azi (°)	TVD (usft)	SS (usft)	+N/-S (usft)	+E/-W (usft)	Vertical Section (usft)	Dogleg Rate (°/100usft)	Build Rate (°/100usft)	Turn Rate (°/100usft)
8,700.0	90.00	90.13	6,864.0	-1,968.00	83.0	1,183.6	1,184.1	0.00	0.00	0.00
8,800.0	90.00	90.13	6,864.0	-1,968.00	82.8	1,283.6	1,284.1	0.00	0.00	0.00
8,900.0	90.00	90.13	6,864.0	-1,968.00	82.6	1,383.6	1,384.1	0.00	0.00	0.00
9,000.0	90.00	90.13	6,864.0	-1,968.00	82.3	1,483.6	1,484.1	0.00	0.00	0.00
9,100.0	90.00	90.13	6,864.0	-1,968.00	82.1	1,583.6	1,584.1	0.00	0.00	0.00
9,200.0	90.00	90.13	6,864.0	-1,968.00	81.9	1,683.6	1,684.1	0.00	0.00	0.00
9,300.0	90.00	90.13	6,864.0	-1,968.00	81.6	1,783.6	1,784.1	0.00	0.00	0.00
9,400.0	90.00	90.13	6,864.0	-1,968.00	81.4	1,883.6	1,884.1	0.00	0.00	0.00
9,500.0	90.00	90.13	6,864.0	-1,968.00	81.2	1,983.6	1,984.1	0.00	0.00	0.00
9,600.0	90.00	90.13	6,864.0	-1,968.00	80.9	2,083.6	2,084.1	0.00	0.00	0.00
9,700.0	90.00	90.13	6,864.0	-1,968.00	80.7	2,183.6	2,184.1	0.00	0.00	0.00
9,800.0	90.00	90.13	6,864.0	-1,968.00	80.5	2,283.6	2,284.1	0.00	0.00	0.00
9,900.0	90.00	90.13	6,864.0	-1,968.00	80.2	2,383.6	2,384.1	0.00	0.00	0.00
10,000.0	90.00	90.13	6,864.0	-1,968.00	80.0	2,483.6	2,484.1	0.00	0.00	0.00
10,100.0	90.00	90.13	6,864.0	-1,968.00	79.8	2,583.6	2,584.1	0.00	0.00	0.00
10,200.0	90.00	90.13	6,864.0	-1,968.00	79.5	2,683.6	2,684.1	0.00	0.00	0.00
10,300.0	90.00	90.13	6,864.0	-1,968.00	79.3	2,783.6	2,784.1	0.00	0.00	0.00
10,400.0	90.00	90.13	6,864.0	-1,968.00	79.1	2,883.6	2,884.0	0.00	0.00	0.00
10,500.0	90.00	90.13	6,864.0	-1,968.00	78.8	2,983.6	2,984.0	0.00	0.00	0.00
10,600.0	90.00	90.13	6,864.0	-1,968.00	78.6	3,083.6	3,084.0	0.00	0.00	0.00
10,700.0	90.00	90.13	6,864.0	-1,968.00	78.4	3,183.6	3,184.0	0.00	0.00	0.00
10,800.0	90.00	90.13	6,864.0	-1,968.00	78.1	3,283.6	3,284.0	0.00	0.00	0.00
10,900.0	90.00	90.13	6,864.0	-1,968.00	77.9	3,383.6	3,384.0	0.00	0.00	0.00
11,000.0	90.00	90.13	6,864.0	-1,968.00	77.7	3,483.6	3,484.0	0.00	0.00	0.00
11,100.0	90.00	90.13	6,864.0	-1,968.00	77.4	3,583.6	3,584.0	0.00	0.00	0.00
11,200.0	90.00	90.13	6,864.0	-1,968.00	77.2	3,683.6	3,684.0	0.00	0.00	0.00
11,300.0	90.00	90.13	6,864.0	-1,968.00	77.0	3,783.6	3,784.0	0.00	0.00	0.00
11,400.0	90.00	90.13	6,864.0	-1,968.00	76.7	3,883.6	3,884.0	0.00	0.00	0.00
11,500.0	90.00	90.13	6,864.0	-1,968.00	76.5	3,983.6	3,984.0	0.00	0.00	0.00
11,600.0	90.00	90.13	6,864.0	-1,968.00	76.3	4,083.6	4,084.0	0.00	0.00	0.00
11,700.0	90.00	90.13	6,864.0	-1,968.00	76.0	4,183.6	4,184.0	0.00	0.00	0.00
11,800.0	90.00	90.13	6,864.0	-1,968.00	75.8	4,283.6	4,284.0	0.00	0.00	0.00
11,900.0	90.00	90.13	6,864.0	-1,968.00	75.6	4,383.6	4,384.0	0.00	0.00	0.00
12,000.0	90.00	90.13	6,864.0	-1,968.00	75.3	4,483.6	4,484.0	0.00	0.00	0.00
12,100.0	90.00	90.13	6,864.0	-1,968.00	75.1	4,583.6	4,584.0	0.00	0.00	0.00
12,200.0	90.00	90.13	6,864.0	-1,968.00	74.9	4,683.6	4,684.0	0.00	0.00	0.00
12,300.0	90.00	90.13	6,864.0	-1,968.00	74.6	4,783.6	4,784.0	0.00	0.00	0.00
12,400.0	90.00	90.13	6,864.0	-1,968.00	74.4	4,883.6	4,884.0	0.00	0.00	0.00
12,500.0	90.00	90.13	6,864.0	-1,968.00	74.2	4,983.6	4,984.0	0.00	0.00	0.00
12,600.0	90.00	90.13	6,864.0	-1,968.00	73.9	5,083.6	5,084.0	0.00	0.00	0.00
12,700.0	90.00	90.13	6,864.0	-1,968.00	73.7	5,183.6	5,184.0	0.00	0.00	0.00
12,800.0	90.00	90.13	6,864.0	-1,968.00	73.5	5,283.6	5,284.0	0.00	0.00	0.00
12,900.0	90.00	90.13	6,864.0	-1,968.00	73.2	5,383.6	5,384.0	0.00	0.00	0.00
13,000.0	90.00	90.13	6,864.0	-1,968.00	73.0	5,483.6	5,484.0	0.00	0.00	0.00
13,100.0	90.00	90.13	6,864.0	-1,968.00	72.8	5,583.6	5,583.9	0.00	0.00	0.00
13,200.0	90.00	90.13	6,864.0	-1,968.00	72.5	5,683.6	5,683.9	0.00	0.00	0.00
13,300.0	90.00	90.13	6,864.0	-1,968.00	72.3	5,783.6	5,783.9	0.00	0.00	0.00
13,400.0	90.00	90.13	6,864.0	-1,968.00	72.1	5,883.6	5,883.9	0.00	0.00	0.00
13,500.0	90.00	90.13	6,864.0	-1,968.00	71.8	5,983.6	5,983.9	0.00	0.00	0.00
13,600.0	90.00	90.13	6,864.0	-1,968.00	71.6	6,083.6	6,083.9	0.00	0.00	0.00
13,700.0	90.00	90.13	6,864.0	-1,968.00	71.4	6,183.6	6,183.9	0.00	0.00	0.00
13,800.0	90.00	90.13	6,864.0	-1,968.00	71.1	6,283.6	6,283.9	0.00	0.00	0.00
13,900.0	90.00	90.13	6,864.0	-1,968.00	70.9	6,383.6	6,383.9	0.00	0.00	0.00
14,000.0	90.00	90.13	6,864.0	-1,968.00	70.7	6,483.6	6,483.9	0.00	0.00	0.00

# Planning Report



<b>Database:</b>	EDM 5000.1 Single User Db	<b>Local Co-ordinate Reference:</b>	Well MICKEY 12
<b>Company:</b>	EXTRACTION OIL & GAS	<b>TVD Reference:</b>	KB-EST @ 4896.0usft
<b>Project:</b>	WELD COUNTY, COLORADO (NAD 83)	<b>MD Reference:</b>	KB-EST @ 4896.0usft
<b>Site:</b>	SW NE SEC. 5 T6N R67W 6th P.M.	<b>North Reference:</b>	True
<b>Well:</b>	MICKEY 12	<b>Survey Calculation Method:</b>	Minimum Curvature
<b>Wellbore:</b>	ORIGINAL WELLBORE		
<b>Design:</b>	PROPOSAL #2		

Planned Survey										
MD (usft)	Inc (°)	Azi (°)	TVD (usft)	SS (usft)	+N/-S (usft)	+E/-W (usft)	Vertical Section (usft)	Dogleg Rate (°/100usft)	Build Rate (°/100usft)	Turn Rate (°/100usft)
14,100.0	90.00	90.13	6,864.0	-1,968.00	70.4	6,583.6	6,583.9	0.00	0.00	0.00
14,200.0	90.00	90.13	6,864.0	-1,968.00	70.2	6,683.6	6,683.9	0.00	0.00	0.00
14,300.0	90.00	90.13	6,864.0	-1,968.00	70.0	6,783.6	6,783.9	0.00	0.00	0.00
14,400.0	90.00	90.13	6,864.0	-1,968.00	69.7	6,883.6	6,883.9	0.00	0.00	0.00
14,500.0	90.00	90.13	6,864.0	-1,968.00	69.5	6,983.6	6,983.9	0.00	0.00	0.00
14,600.0	90.00	90.13	6,864.0	-1,968.00	69.3	7,083.6	7,083.9	0.00	0.00	0.00
14,700.0	90.00	90.13	6,864.0	-1,968.00	69.0	7,183.6	7,183.9	0.00	0.00	0.00
14,800.0	90.00	90.13	6,864.0	-1,968.00	68.8	7,283.6	7,283.9	0.00	0.00	0.00
14,900.0	90.00	90.13	6,864.0	-1,968.00	68.6	7,383.6	7,383.9	0.00	0.00	0.00
15,000.0	90.00	90.13	6,864.0	-1,968.00	68.4	7,483.6	7,483.9	0.00	0.00	0.00
15,100.0	90.00	90.13	6,864.0	-1,968.00	68.1	7,583.6	7,583.9	0.00	0.00	0.00
15,200.0	90.00	90.13	6,864.0	-1,968.00	67.9	7,683.6	7,683.9	0.00	0.00	0.00
15,300.0	90.00	90.13	6,864.0	-1,968.00	67.7	7,783.6	7,783.9	0.00	0.00	0.00
15,400.0	90.00	90.13	6,864.0	-1,968.00	67.4	7,883.6	7,883.9	0.00	0.00	0.00
15,500.0	90.00	90.13	6,864.0	-1,968.00	67.2	7,983.6	7,983.9	0.00	0.00	0.00
15,600.0	90.00	90.13	6,864.0	-1,968.00	67.0	8,083.6	8,083.9	0.00	0.00	0.00
15,700.0	90.00	90.13	6,864.0	-1,968.00	66.7	8,183.6	8,183.8	0.00	0.00	0.00
15,800.0	90.00	90.13	6,864.0	-1,968.00	66.5	8,283.6	8,283.8	0.00	0.00	0.00
15,900.0	90.00	90.13	6,864.0	-1,968.00	66.3	8,383.6	8,383.8	0.00	0.00	0.00
16,000.0	90.00	90.13	6,864.0	-1,968.00	66.0	8,483.6	8,483.8	0.00	0.00	0.00
16,100.0	90.00	90.13	6,864.0	-1,968.00	65.8	8,583.6	8,583.8	0.00	0.00	0.00
16,200.0	90.00	90.13	6,864.0	-1,968.00	65.6	8,683.6	8,683.8	0.00	0.00	0.00
16,300.0	90.00	90.13	6,864.0	-1,968.00	65.3	8,783.6	8,783.8	0.00	0.00	0.00
16,400.0	90.00	90.13	6,864.0	-1,968.00	65.1	8,883.6	8,883.8	0.00	0.00	0.00
16,500.0	90.00	90.13	6,864.0	-1,968.00	64.9	8,983.6	8,983.8	0.00	0.00	0.00
16,600.0	90.00	90.13	6,864.0	-1,968.00	64.6	9,083.6	9,083.8	0.00	0.00	0.00
16,700.0	90.00	90.13	6,864.0	-1,968.00	64.4	9,183.6	9,183.8	0.00	0.00	0.00
16,800.0	90.00	90.13	6,864.0	-1,968.00	64.2	9,283.6	9,283.8	0.00	0.00	0.00
16,900.0	90.00	90.13	6,864.0	-1,968.00	63.9	9,383.6	9,383.8	0.00	0.00	0.00
17,000.0	90.00	90.13	6,864.0	-1,968.00	63.7	9,483.6	9,483.8	0.00	0.00	0.00
17,100.0	90.00	90.13	6,864.0	-1,968.00	63.5	9,583.6	9,583.8	0.00	0.00	0.00
17,200.0	90.00	90.13	6,864.0	-1,968.00	63.2	9,683.6	9,683.8	0.00	0.00	0.00
17,300.0	90.00	90.13	6,864.0	-1,968.00	63.0	9,783.6	9,783.8	0.00	0.00	0.00
<b>BHL: 2421ft FNL &amp; 2617ft FEL of Sec 3</b>										
<b>17,327.9</b>	<b>90.00</b>	<b>90.13</b>	<b>6,864.0</b>	<b>-1,968.00</b>	<b>62.9</b>	<b>9,811.5</b>	<b>9,811.7</b>	<b>0.00</b>	<b>0.00</b>	<b>0.00</b>

Formations						
MD (usft)	TVD (usft)	Name	Lithology	Dip (°)	Dip Direction (°)	
3,377.0	3,354.0	PARKMAN				
3,988.6	3,954.0	SUSSEX				
4,406.6	4,364.0	SHANNON				
6,838.2	6,709.0	SHARON SPRINGS				
6,892.1	6,744.0	NIOBRARA				
7,269.8	6,864.0	NIO B TARGET				

<b>Database:</b>	EDM 5000.1 Single User Db	<b>Local Co-ordinate Reference:</b>	Well MICKEY 12
<b>Company:</b>	EXTRACTION OIL & GAS	<b>TVD Reference:</b>	KB-EST @ 4896.0usft
<b>Project:</b>	WELD COUNTY, COLORADO (NAD 83)	<b>MD Reference:</b>	KB-EST @ 4896.0usft
<b>Site:</b>	SW NE SEC. 5 T6N R67W 6th P.M.	<b>North Reference:</b>	True
<b>Well:</b>	MICKEY 12	<b>Survey Calculation Method:</b>	Minimum Curvature
<b>Wellbore:</b>	ORIGINAL WELLBORE		
<b>Design:</b>	PROPOSAL #2		

## Plan Annotations

MD (usft)	TVD (usft)	Local Coordinates		Comment
		+N/-S (usft)	+E/-W (usft)	
0.0	0.0	0.0	0.0	SHL: 2422ft FNL & 1933ft FEL of Sec 5
1,600.0	1,600.0	0.0	0.0	9 5/8" SURFACE CASING
1,800.0	1,800.0	0.0	0.0	START NUDGE (2°/100ft BUR)
2,360.4	2,356.8	5.1	-54.4	EOB TO 11.21° INC
6,258.1	6,180.2	75.4	-808.8	KOP (10°/100ft DGLG)
7,269.8	6,864.0	86.4	-246.6	HZ LP: 2334ft FNL & 2178ft FEL of Sec 5
17,327.9	6,864.0	62.9	9,811.5	BHL: 2421ft FNL & 2617ft FEL of Sec 3