

HALLIBURTON

iCem[®] Service

TERRA ENERGY PARTNERS

For: Mark Mewshaw and Lynn Cass

Date: Tuesday, August 02, 2016

RU 523-7 Surface

API# 05-045-23129-00

Sincerely,

Grand Junction Cement Engineering

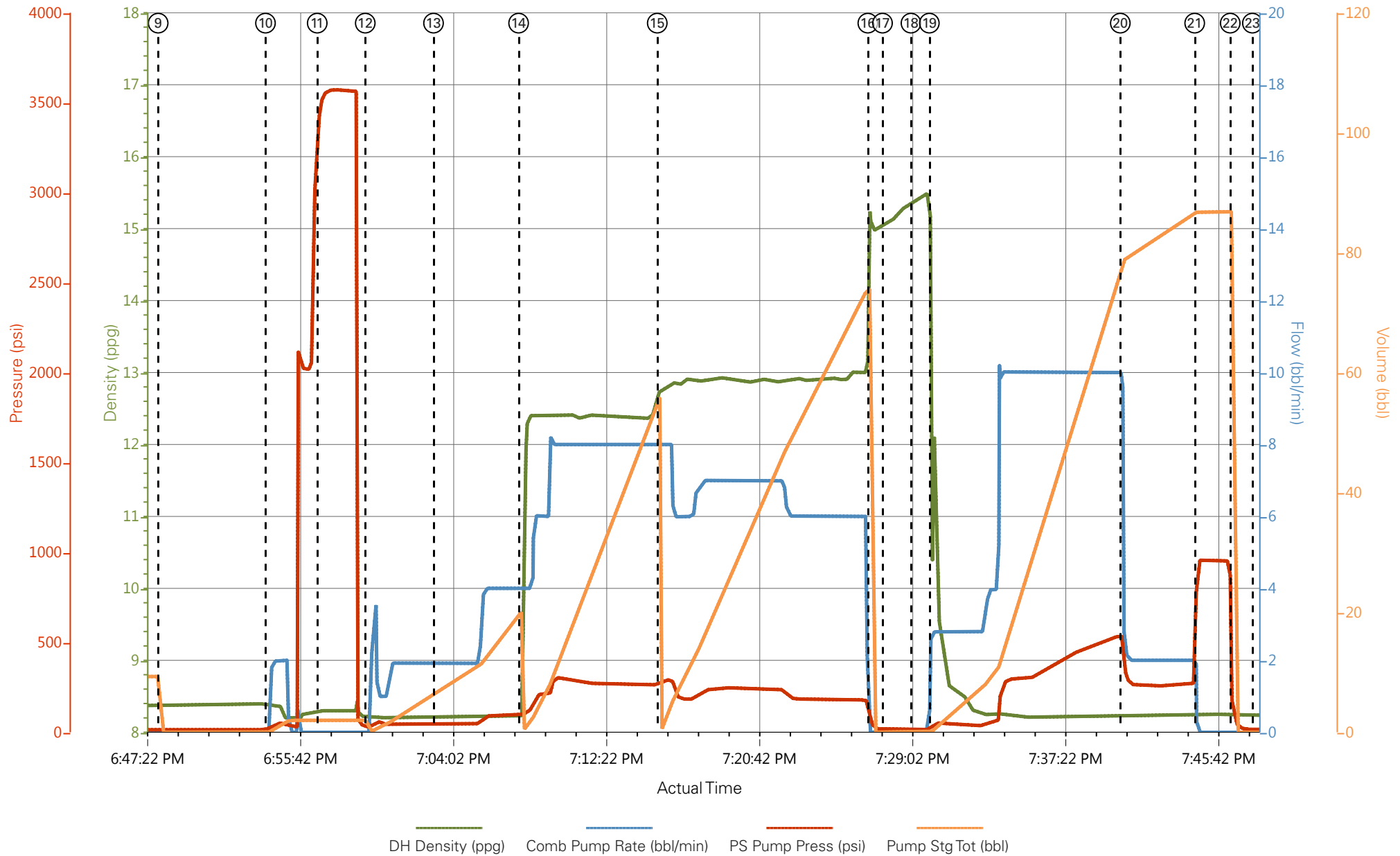
1.0 Real-Time Job Summary

1.1 Job Event Log

Type	Seq. No.	Graph Label	Date	Time	Source	DH Density (ppg)	Comb Pump Rate (bbl/min)	PS Pump Press (psi)	Pump Stage Total (bbl)	Comments
Event	1	Call Out	8/2/2016	10:00:00	USER					REQUESTED ON LOCATION @ 15:00
Event	2	Pre-Convoy Safety Meeting	8/2/2016	11:45:00	USER					ALL HES PRESENT
Event	3	Crew Leave Yard	8/2/2016	12:00:00	USER					1- 550 PU, 1- ELITE PUMP AND 1- 660 BULK TRUCK
Event	4	Arrive At Loc	8/2/2016	13:00:00	USER					ALL TRUCKS ARRIVED TOGETHER
Event	5	Assessment Of Location Safety Meeting	8/2/2016	13:15:00	USER					DID A WALKAROUND OF LOCATION, MET WITH CO REP AND WENT OVER NUMBERS AND JOB PROCEDURE. CUSTOMER OFFERED/RECEIVED SDS. COLLECTED WATER SAMPLE. (PH-7, CHL-0, TEMP-71F)
Event	6	Pre-Rig Up Safety Meeting	8/2/2016	16:30:00	USER					ALL HES PRESENT
Event	7	Rig-Up Equipment	8/2/2016	16:45:00	USER					I WAS ABLE TO SPOT TRUCKS @ 16:45 AND CASING CREW WAS DONE @ 1800 AND WE WERE ABLE TO RIG UP THE REST OF THE WAY
Event	8	Pre-Job Safety Meeting	8/2/2016	18:45:00	USER					MET WITH RIG CREW AND WENT OVER JOB. ALL HES PRESENT
Event	9	Start Job	8/2/2016	18:48:08	COM5					TD 1141', TP 1136', SJ 46.54, CSG 9.625" H-40 32.3 PPG, OH 13.5", 9.4 PPG
Event	10	Prime Pumps	8/2/2016	18:53:59	COM5	8.33	2	24	2	2 BBLS FRESH WATER
Event	11	Test Lines	8/2/2016	18:56:48	COM5			3572		TESTED TO 3572 PSI. TESTED GOOD, KO'S FUNCTIONING
Event	12	Pump Spacer 1	8/2/2016	18:59:25	COM5	8.33	4	95	20	20 BBLS FRESH WATER
Event	13	Check weight	8/2/2016	19:03:08	COM5	12.3				12.3 PPG
Event	14	Pump Lead Cement	8/2/2016	19:07:46	COM5	12.3	8	280	55	130 SK VariCem(55 BBLS) 12.3 PPG, 2.38FT3/SK, 13.77 GAL/SK

Event	15	Pump Tail Cement	8/2/2016	19:15:19	COM5	12.8	7	243	66	175 SKS VariCem (66 BBLS) 12.8 PPG, 2.11 FT3/SK, 11.78 GAL/SK
Event	16	Shutdown	8/2/2016	19:26:47	COM5					END OF CEMENT
Event	17	Wash On Top	8/2/2016	19:27:35	USER	8.33			10	10 BBLS FRESH WATER
Event	18	Drop Top Plug	8/2/2016	19:29:08	COM5					PLUG WENT.
Event	19	Pump Displacement	8/2/2016	19:30:08	COM5	8.33	10	540	85.7	85.7 BBLS FRESH WATER
Event	20	Slow Rate	8/2/2016	19:40:32	COM5	8.33	2	260	75	SLOWED TO 2 BBLS/MIN TO LAND PLUG
Event	21	Bump Plug	8/2/2016	19:44:35	COM5	8.33	2	270	85.7	LANDED AT 270 PSI AND WENT TO 953 PSI
Event	22	Check Floats	8/2/2016	19:46:31	COM5	8.33		953	85.7	FLOATS HELD .5 BBLS FLOWBACK TO TRUCK
Event	23	End Job	8/2/2016	19:47:43	COM5					GOOD RETURNS THROUGHOUT JOB. 25 BBLS OF GOOD CEMENT TO SURFACE
Event	24	Pre-Rig Down Safety Meeting	8/2/2016	19:50:00	USER					ALL HES PRESENT
Event	25	Rig Down Lines	8/2/2016	20:00:00	USER					
Event	26	Pre-Convoy Safety Meeting	8/2/2016	20:30:00	USER					ALL HES PRESENT
Event	27	Crew Leave Location	8/2/2016	20:45:00	USER					THANK YOU FOR USING HALLIBURTON CEMENT. CLIFF SPARKS AND CREW

TERRA YOUNBERG RU 523-7 9.625" SURFACE



① Call Out ③ Crew Leave Yard ⑤ Assessment Of Location Safety Meeting ⑦ Rig-Up Equipment ⑨ Start Job ⑪ Test Lines ⑬ Check weight ⑮ Pump Tail
 ② Pre-Convoy Safety Meeting ④ Arrive At Loc ⑥ Pre-Rig Up Safety Meeting ⑧ Pre-Job Safety Meeting ⑩ Prime Pumps ⑫ Pump Spacer 1 ⑭ Pump Lead Cement ⑯ Shutdown

TERRA YOUNBERG RU 523-7 9.625" SURFACE

