

# Reclamation Inspection

10/25/2016

Operator: Brown Oil and Gas

Location ID: 430981

Logan County, CO

NENW Section 15 T11N 54RW

Aaron Trujillo

Reclamation Specialist

COGCC



**COLORADO**

Department of Natural Resources



**Figure 1:** Photo of GPS confirming location.





**Figure 2:** Photo taken from the location, facing north. Photo shows vegetation over the reclamation area. 6 foot measuring stick used as reference.





**Figure 3:** Photo taken from the location, facing east. Photo shows vegetation over the reclamation area. 6 foot measuring stick used as reference.





**Figure 4:** Photo taken from the location, facing south. Photo shows vegetation over the reclamation area. 6 foot measuring stick used as reference.





**Figure 5:** Photo taken from the location, facing west. Photo shows vegetation over the reclamation area. 6 foot measuring stick used as reference.





**Figure 6:** Photo taken from the southeast corner of the location, facing west. Photo shows vegetation over the reclamation area. Note large portions of the location remains unvegetated.





**Figure 7:** Photo taken from the southeast corner of the location, facing northwest. Photo shows vegetation over the reclamation area. Note large portions of the location remains unvegetated.





**Figure 8:** Photo taken from the southeast corner of the location, facing north. Photo shows vegetation over the reclamation area. Note large portions of the location remains unvegetated.





**Figure 9:** Photo taken from the northwest corner of the location, facing east. Photo shows vegetation over the reclamation area. Note large portions of the location remains unvegetated.





**Figure 10:** Photo taken from the northwest corner of the location, facing southeast. Photo shows vegetation over the reclamation area. Note large portions of the location remains unvegetated.





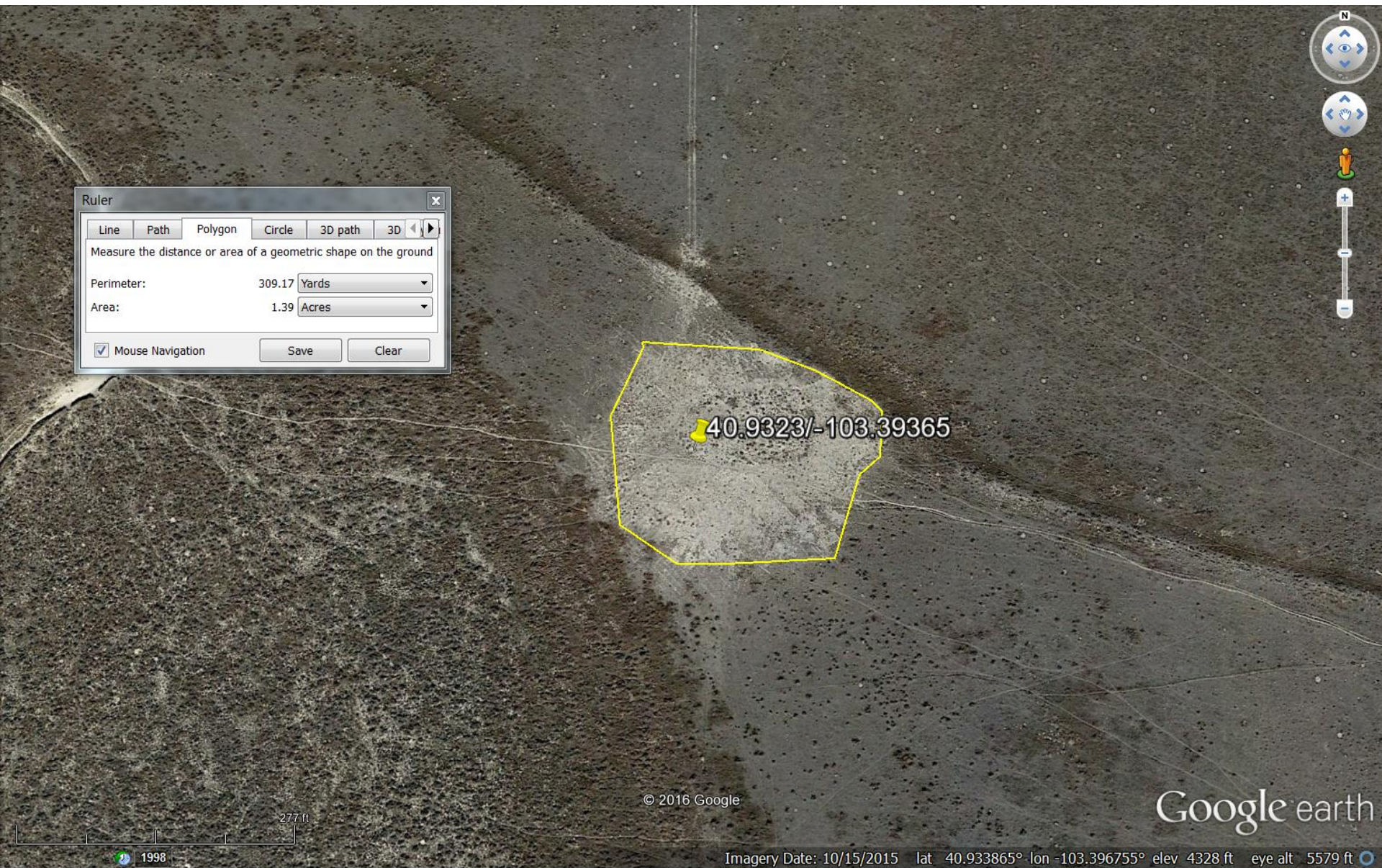
**Figure 11:** Photo taken from the northwest corner of the location, facing south. Photo shows vegetation over the reclamation area. Note large portions of the location remains unvegetated..





**Figure 12:** Photo taken from the adjacent reference area, east of the location, facing north. Photo shows vegetation over the reference area.





**Figure 13:** 2015 aerial image of location. Image shows approximate size of disturbance is 1.4 acres.