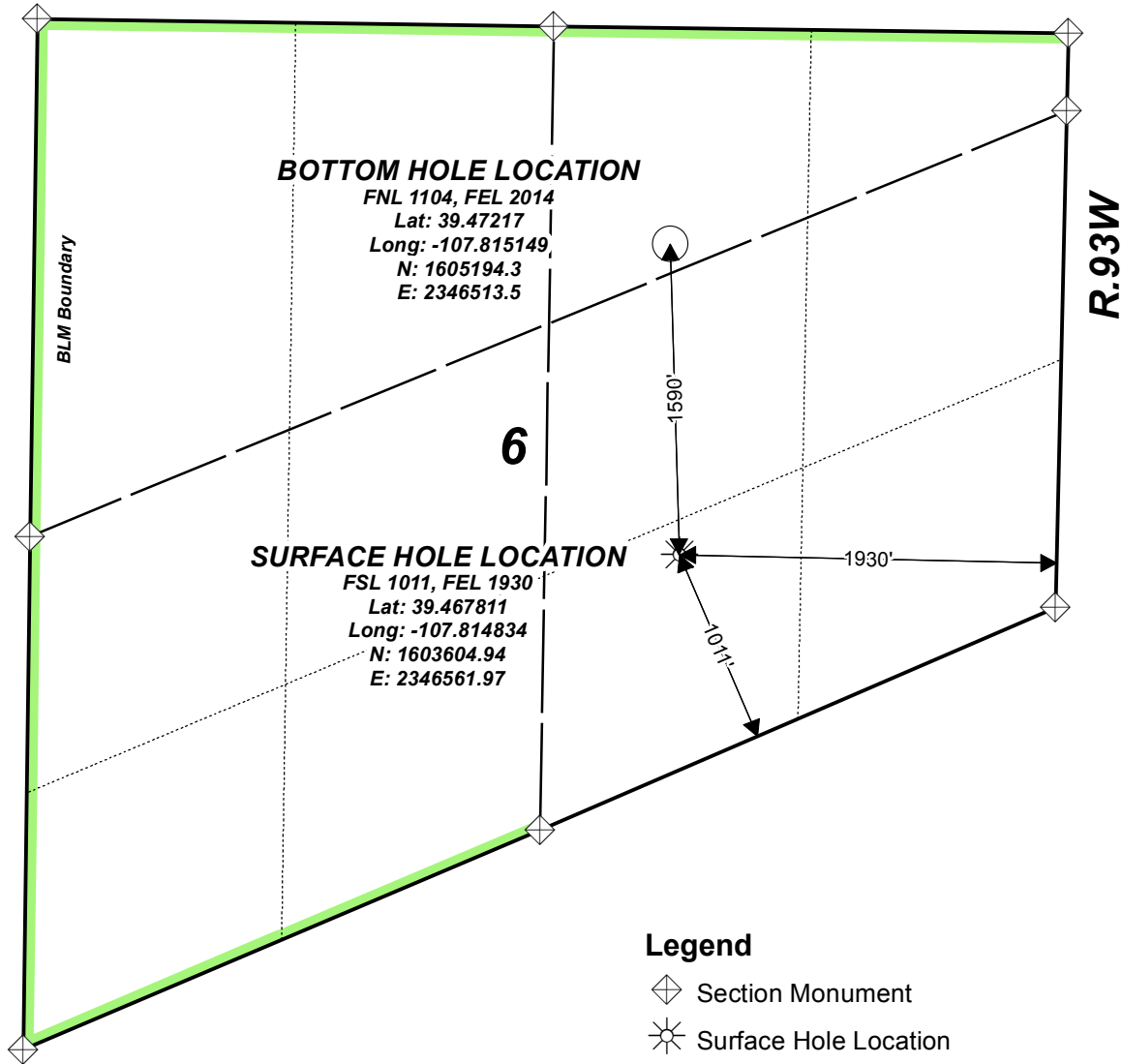


# RU 532-6

T.7S.



## Legend

- ◇ Section Monument
- ⊛ Surface Hole Location
- Bottom Hole Location



0 500 1,000 Feet  
1 in. = 950 ft.



Map Date: 10/25/2016

Scale: 1" = 950'

Page 1 of 1

## Well Location Plat

TEP Rocky Mountain LLC

SW1/4 SE1/4, SECTION 6,  
T.7S., R.93W, of the 6th. P.M.  
GARFIELD COUNTY, COLORADO