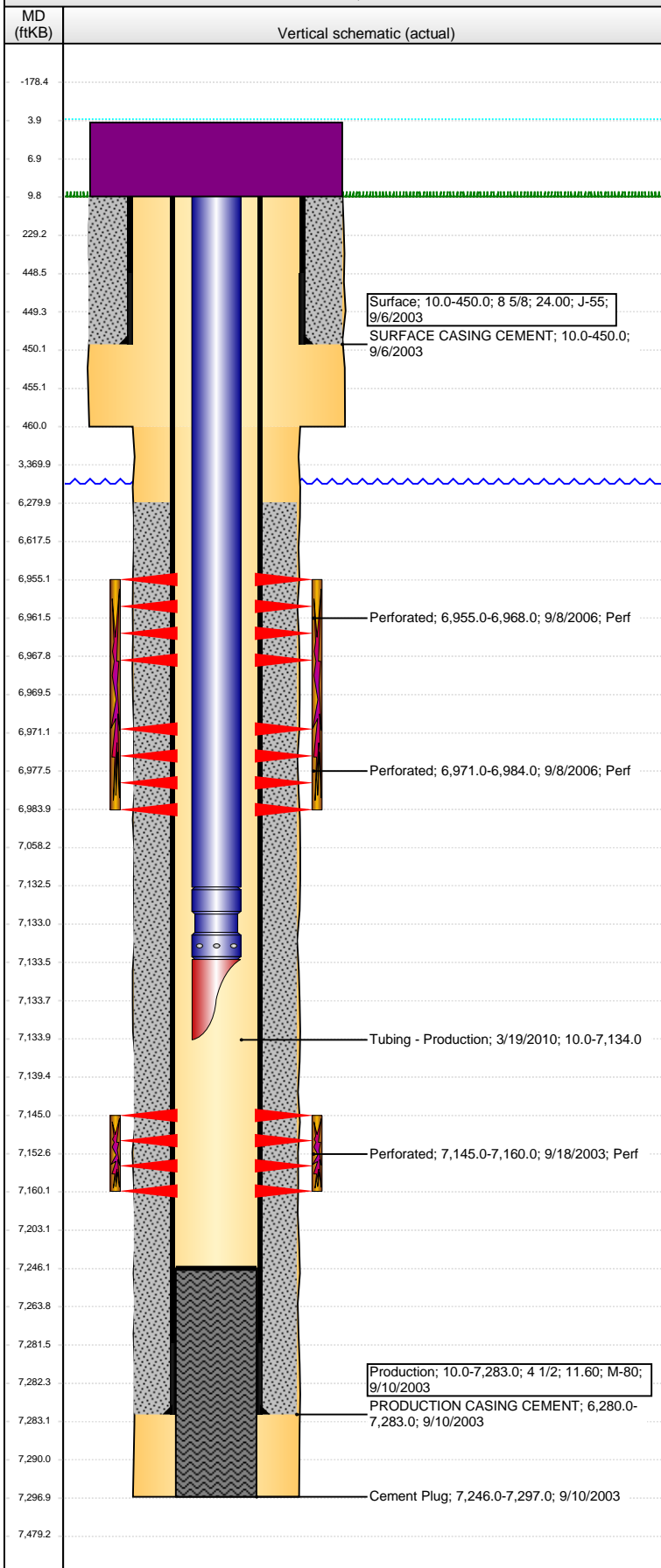


Well Name: EIFERT 11-42

VERTICAL - ORIGINAL HOLE, 10/10/2016 1:45:58 PM



Well Header								
API 05-123-21645		Business Unit DJ BASIN		District 15	Well Config VERTICAL			
Original KB Elevation (ft) 4,793		KB - GL / MSL (ftKB) 10.00		Spud Date 9/5/2003		P & A Date		
Comment								
Directions To Well								
Congressional Location								
Quarter 3 NW		Quarter 4 SE	Section 11	Township 6	Twnshp N/S Dir N	Range 65		Range E/W Dir W
Bottom Hole Location								
North-South Distance (ft)			From N or S Line		East-West Distance (ft)		From E or W Line	
Plug Back Total Depths								
Date		Depth (ftKB)	Method		Com			
9/10/2006		7,246.0	CASING TALLY					
Wellbore Sections								
Section Des			Size (in)	Act Top, MD (ftKB)		Act Btm, MD (ftKB)		
SURFACE			12 1/4	10		460		
PRODUCTION			7 7/8	460		7,297		
Zone Statuses								
Zone Name	Status Date	Status	Fluid Type	Job	Prod Method			
CODELL	9/30/2003	PR	Oil	DRILLING/CO...	Flowing			
CODELL	4/7/2010	PR	Water					
NIOBRARA	1/1/2000	PR			Flowing			
NIOBRARA	9/13/2006	PR	Oil	RECOMPLETI...				
NIOBRARA	4/7/2010	PR	Water					
NIOBRARA	1/26/2016	PR						
Casing Strings								
Surface, 450.0ftKB								
Casing Description		Run Date	OD (in)	Wt/Len (l...	Grade	Top, MD (ft...	MD (ftKB)	
Surface		9/6/2003	8 5/8	24.00	J-55	10.0	450.0	
Production, 7,283.0ftKB								
Casing Description		Run Date	OD (in)	Wt/Len (l...	Grade	Top, MD (ft...	MD (ftKB)	
Production		9/10/2003	4 1/2	11.60	M-80	10.0	7,283.0	
Cement								
Description				Top Depth (ftKB)		Bottom Depth (ftKB)		
SURFACE CASING CEMENT				10.0		450.0		
Description				Top Depth (ftKB)		Bottom Depth (ftKB)		
PRODUCTION CASING CEMENT				6,280.0		7,283.0		
Description				Top Depth (ftKB)		Bottom Depth (ftKB)		
Cement Plug				7,246.0		7,297.0		
Tubing Strings								
Tubing Description		Run Date	String...	ID (in)	Wt (lb/ft)	Grade	Len (ft)	Set De...
Tubing - Production		3/19/2010	2 3/8	1.995	4.70	J-55	7,124.00	
Tubing Components								
Item Des		OD (in)	Wt (lb/ft)	Grade	Jts	Len (ft)	Btm (ftKB)	Btm (TVD) (ftKB)
Tubing		2 3/8	4.70	J-55	222	7,122.50	7,132.5	
Seal Nipple		2 3/8			1	1.00	7,133.5	
Mule Shoe		2 3/8			1	0.50	7,134.0	
Perforation Data								
Zone		Bnch/St g	Entered Shot Total	Top (ftKB)		Btm (ftKB)		Date
NIOBRARA, ORIGINAL HOLE		B	52	6,955.00		6,968.00		9/8/2006
NIOBRARA, ORIGINAL HOLE		B	48	6,971.00		6,984.00		9/8/2006
CODELL, ORIGINAL HOLE			60	7,145.00		7,160.00		9/18/2003
Stimulations & Treatments								
Date		Zone			Primary Job Type			
9/19/2003		CODELL, ORIGINAL HOLE			DRILLING/COMPLETION - ORIGINAL			
Technical Result			Tech Result Details			Tech Result Note		
Comment								

Well Name: EIFERT 11-42

VERTICAL - ORIGINAL HOLE, 10/10/2016 1:46:01 PM

Stimulations & Treatments

Date 9/12/2006	Zone NIOBRARA, ORIGINAL HOLE	Primary Job Type RECOMPLETION
Technical Result	Tech Result Details	Tech Result Note
Comment		

Other In Hole

Run Date	Des	OD (in)	Top (ftKB)	Btm (ftKB)

Logs

Date	Type	Top, MD (ftKB)	Btm, MD (ftKB)
9/9/2003	COMPENSATED DENSITY	3,700.0	7,269.0
9/9/2003	INDUCTION	450.0	7,289.0
9/17/2003	CBL/CCL/GR	6,114.0	7,235.0

