

# Final Reclamation Inspection

08/25/2016

Operator: Petroleum Energy Corp

Location ID: 395744

API: 087-07994

Morgan County, CO

NESE Section 29 T6N R58W

Aaron Trujillo

Reclamation Specialist

COGCC



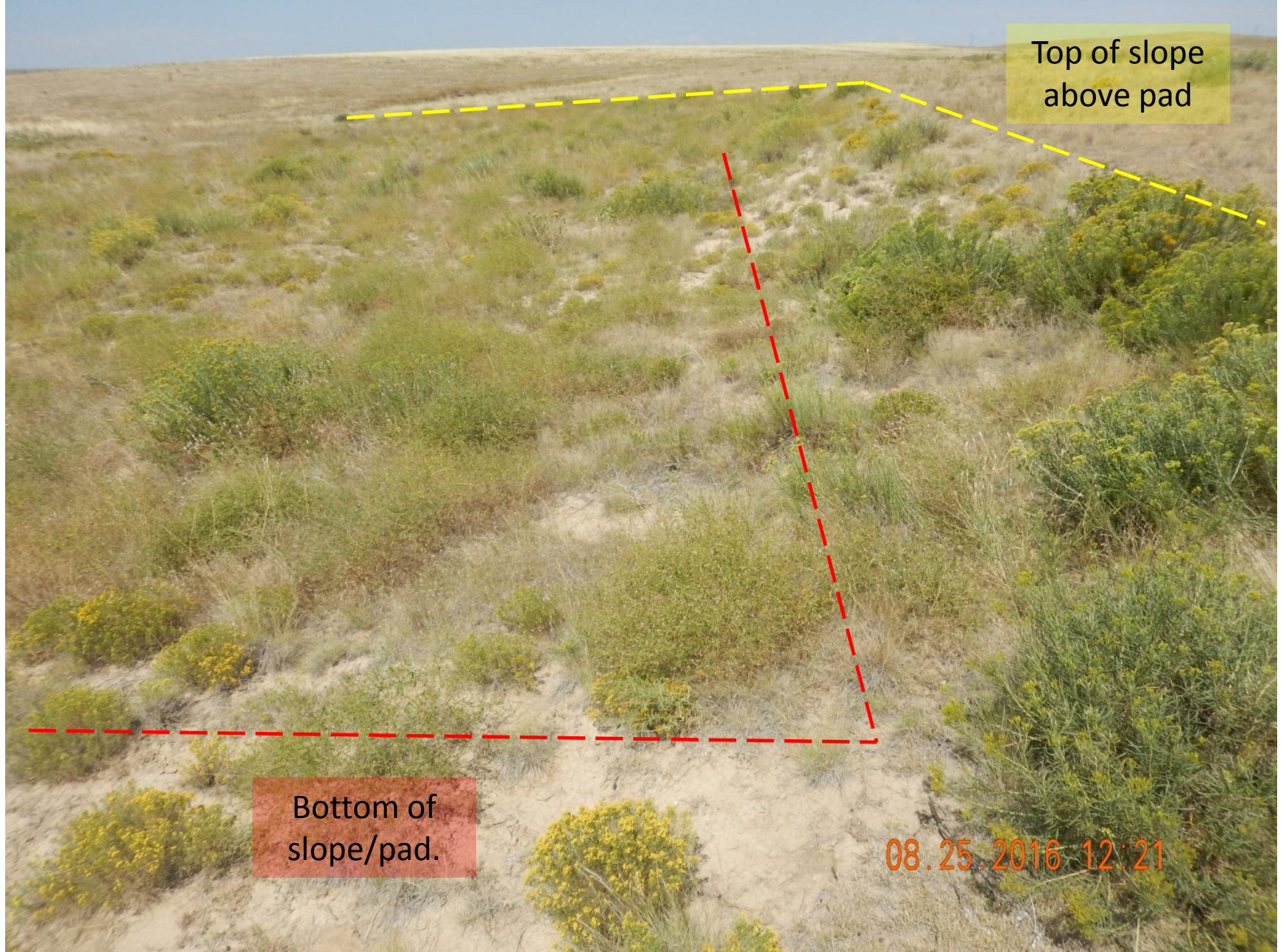
**COLORADO**

Department of Natural Resources



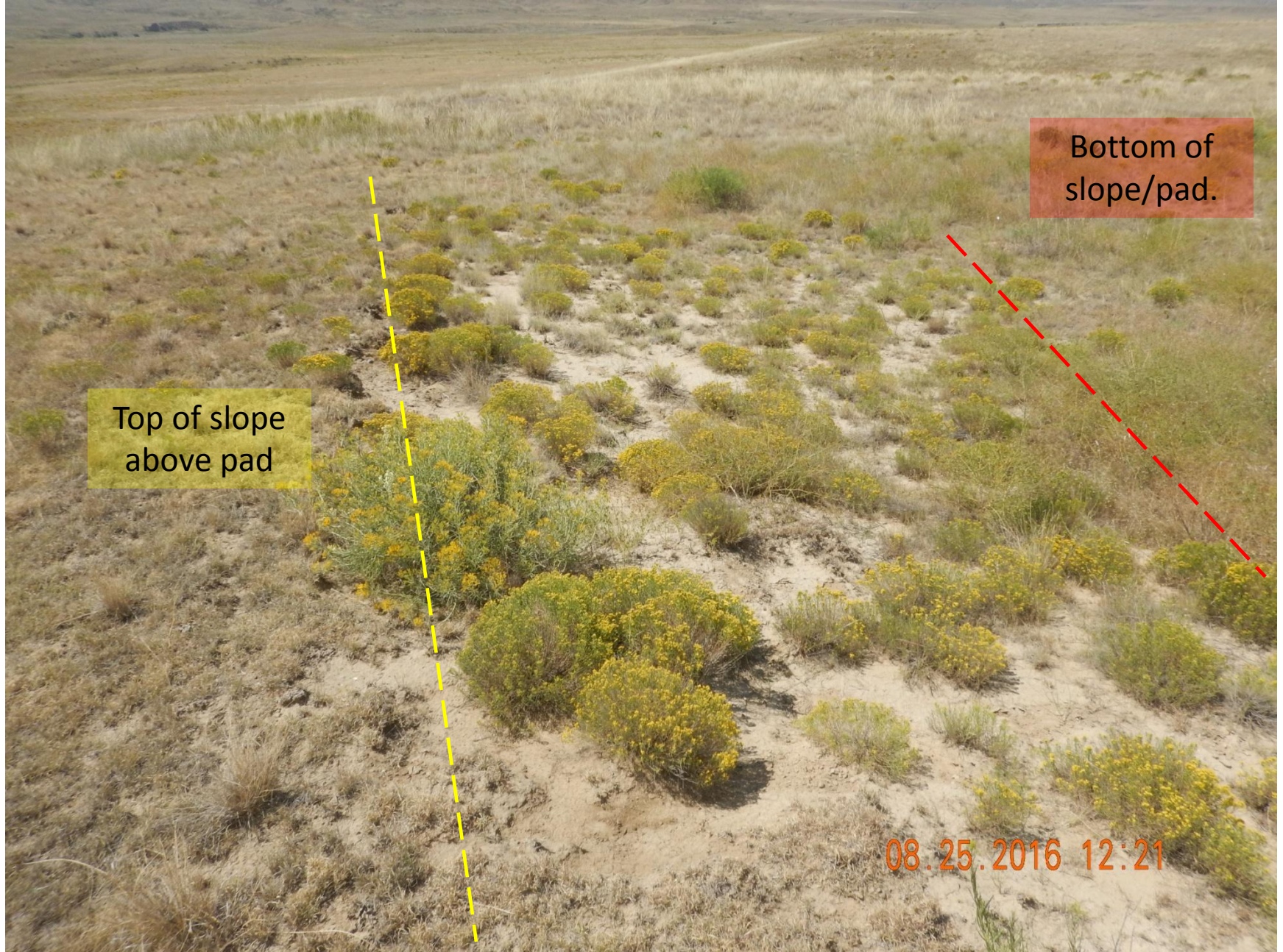
**Figure 1:** Photo of GPS confirming location.





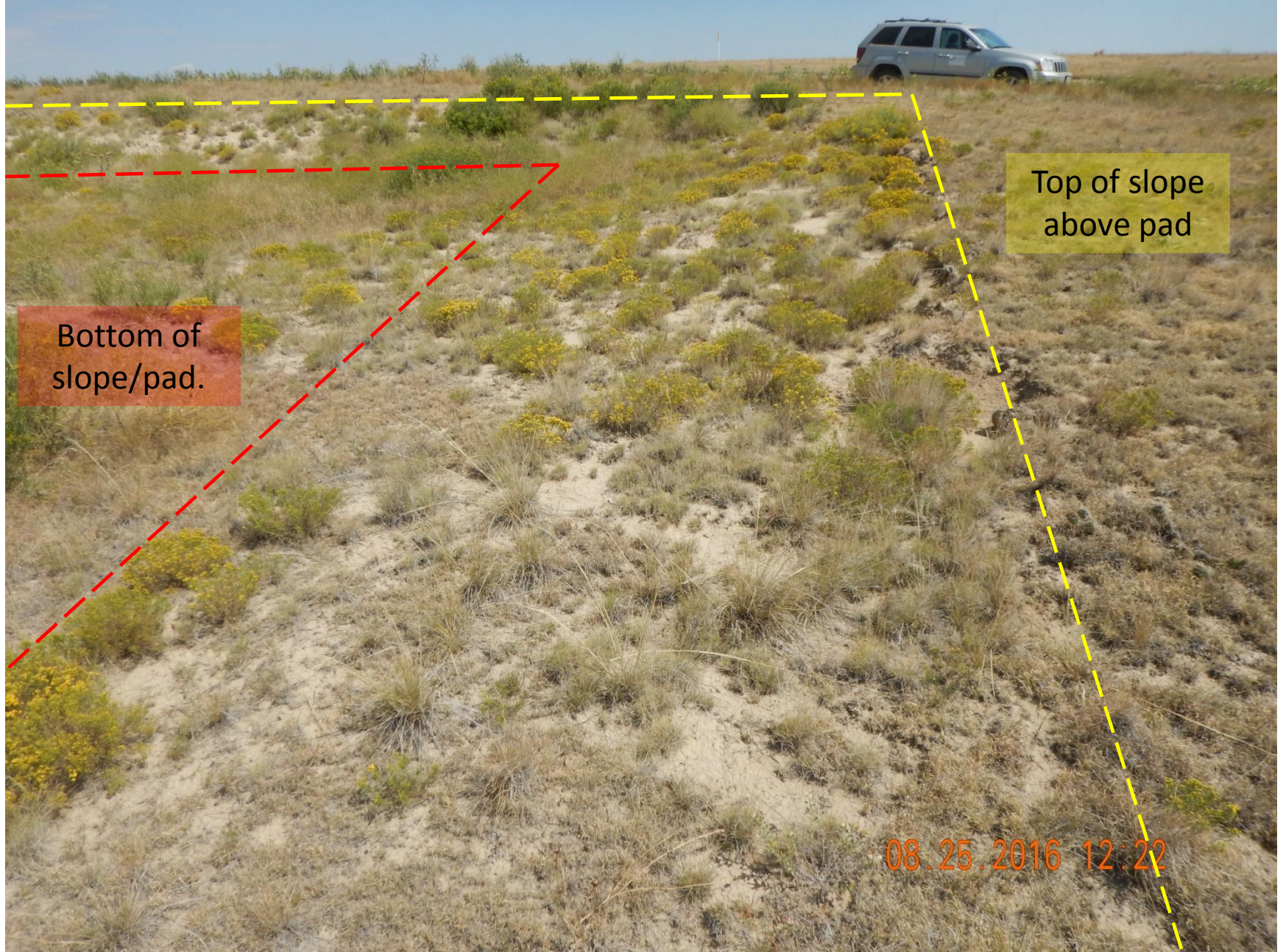
**Figure 2:** Photo taken from the southeast corner of the location, facing north. Photo shows vegetation over the reclamation area, and slope on the eastern perimeter of the location





**Figure 3:** Photo taken from the southeast corner of the location, facing west. Photo shows vegetation over the reclamation area, and slope on the southern perimeter of the location.





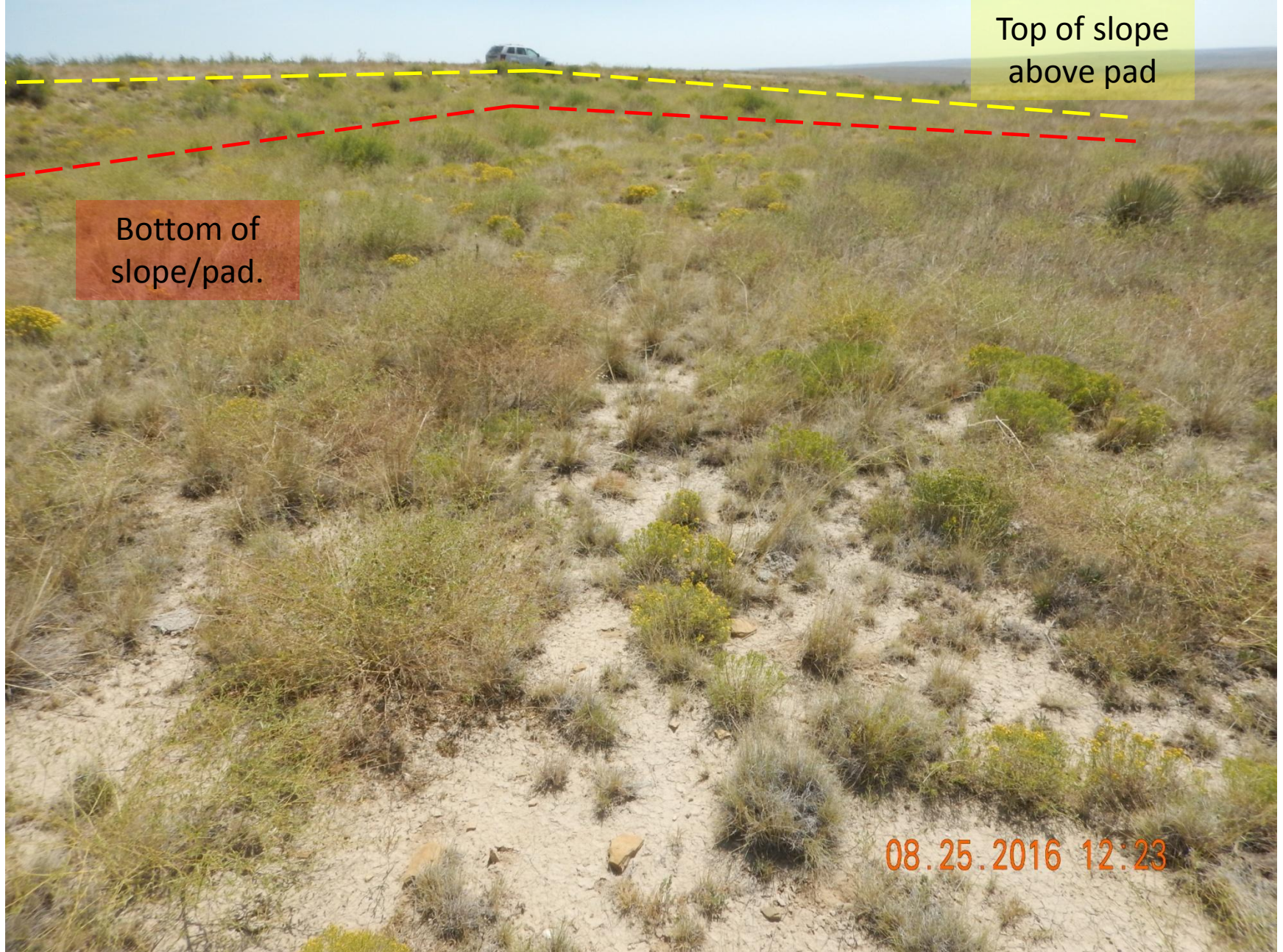
**Figure 4:** Photo taken from the southwest corner of the location, facing east. Photo shows vegetation over the reclamation area, and slope on the southern perimeter of the location.





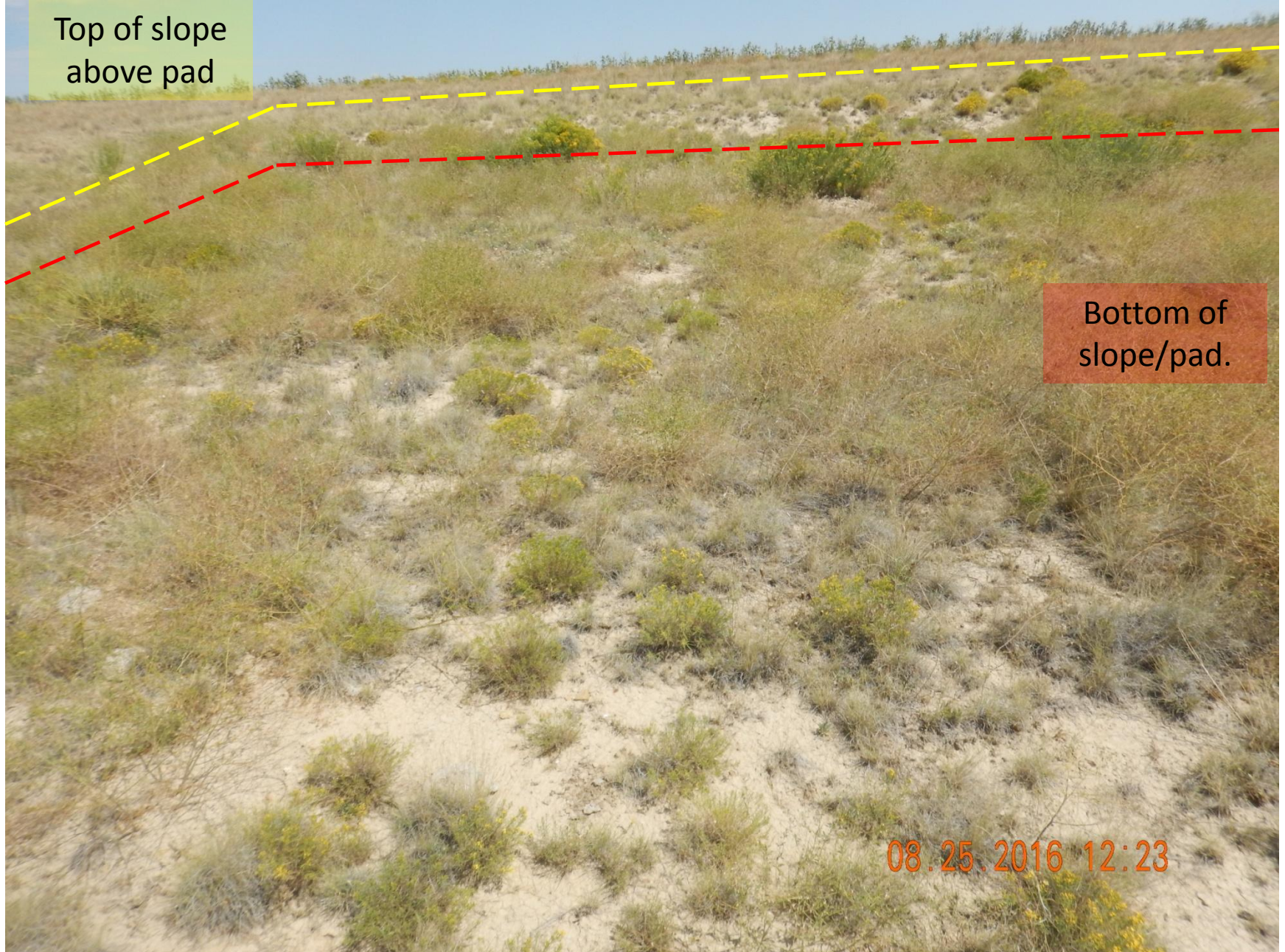
**Figure 5:** Photo taken from the southwest corner of the location, facing north. Photo shows vegetation over the reclamation area.





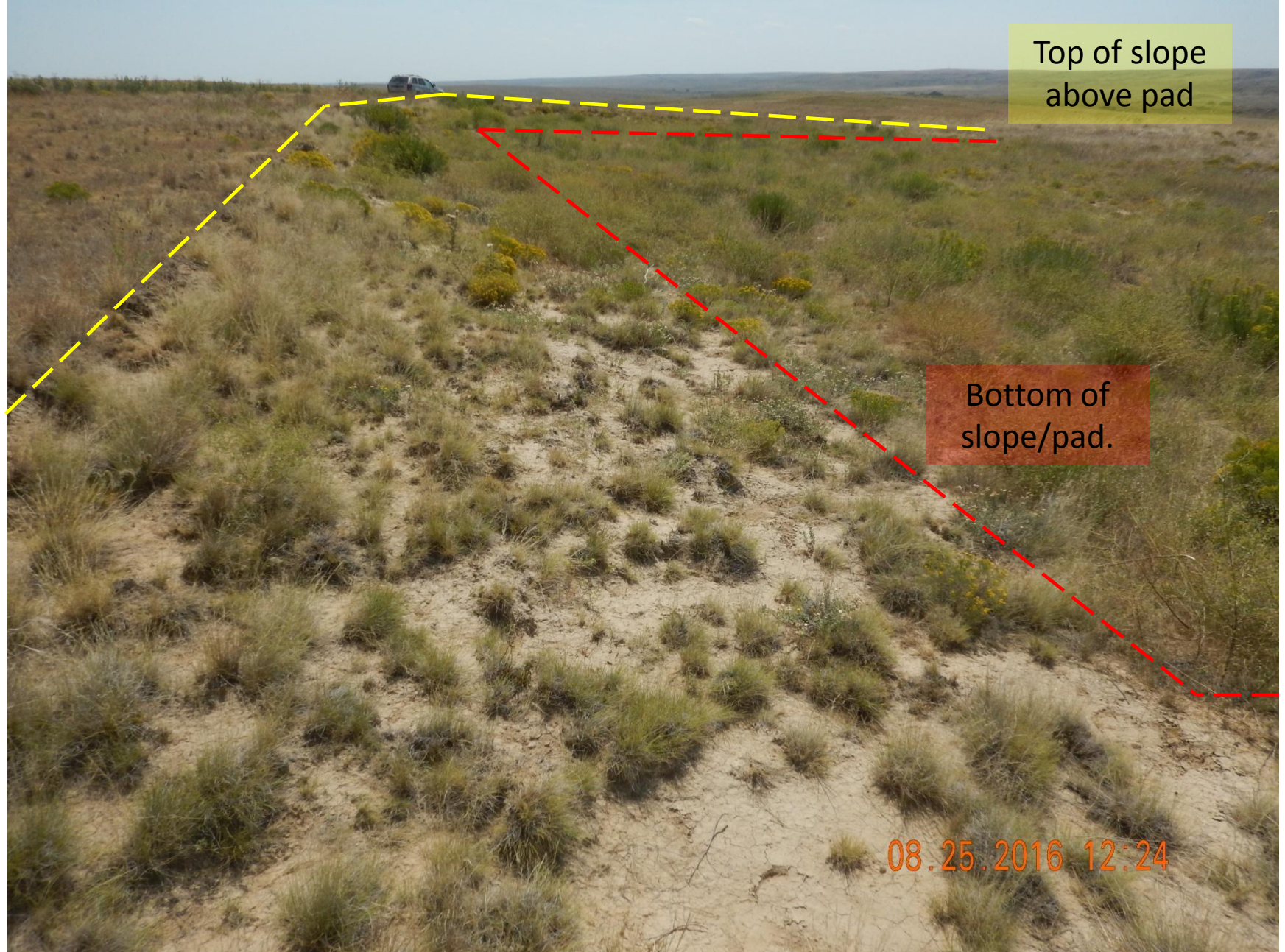
**Figure 6:** Photo taken from the northwest corner of the location, facing south. Photo shows vegetation over the reclamation area, and slope on the perimeter of the location.





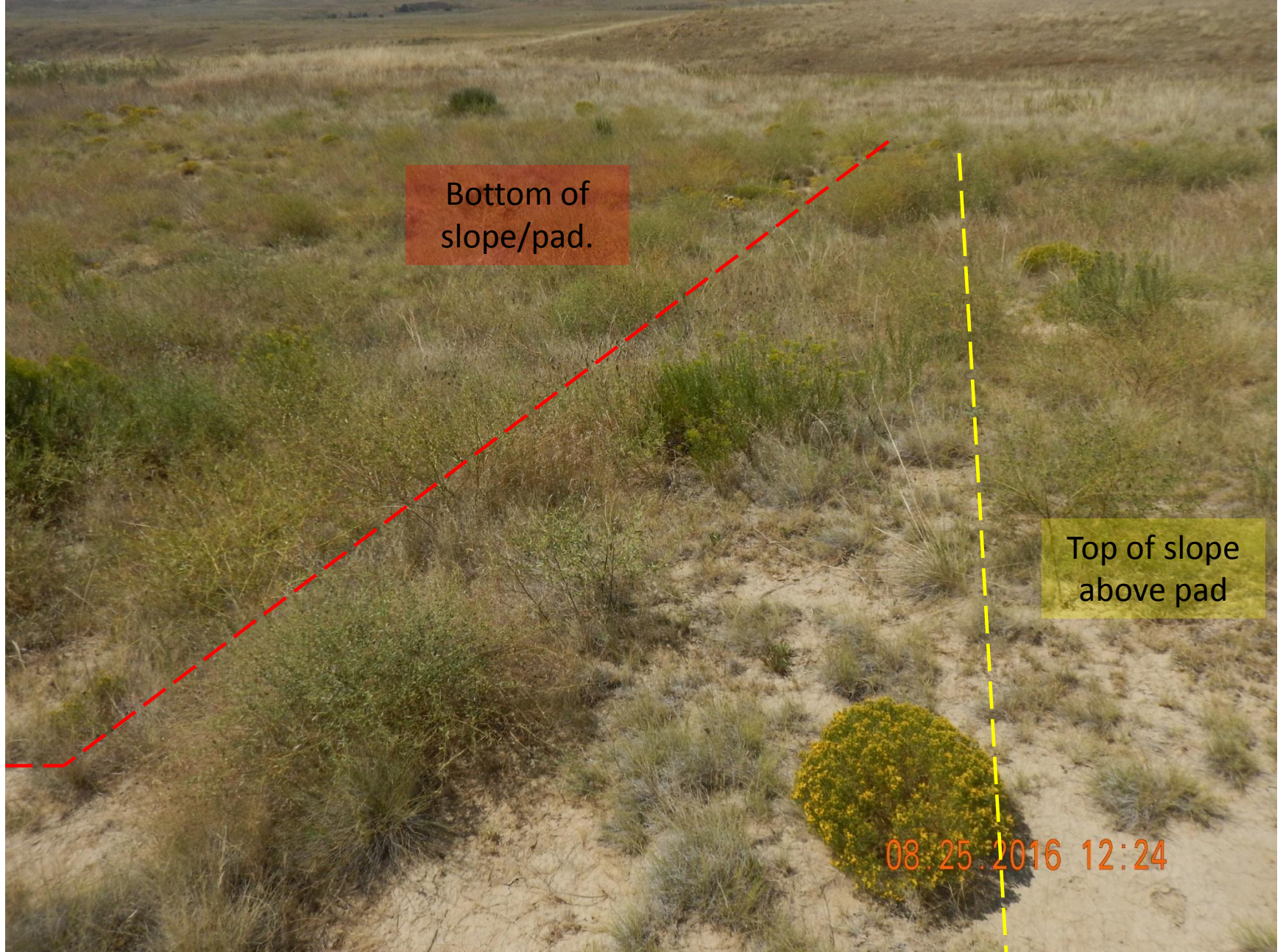
**Figure 7:** Photo taken from the northwest corner of the location, facing east. Photo shows vegetation over the reclamation area, and slope on the perimeter of the location.





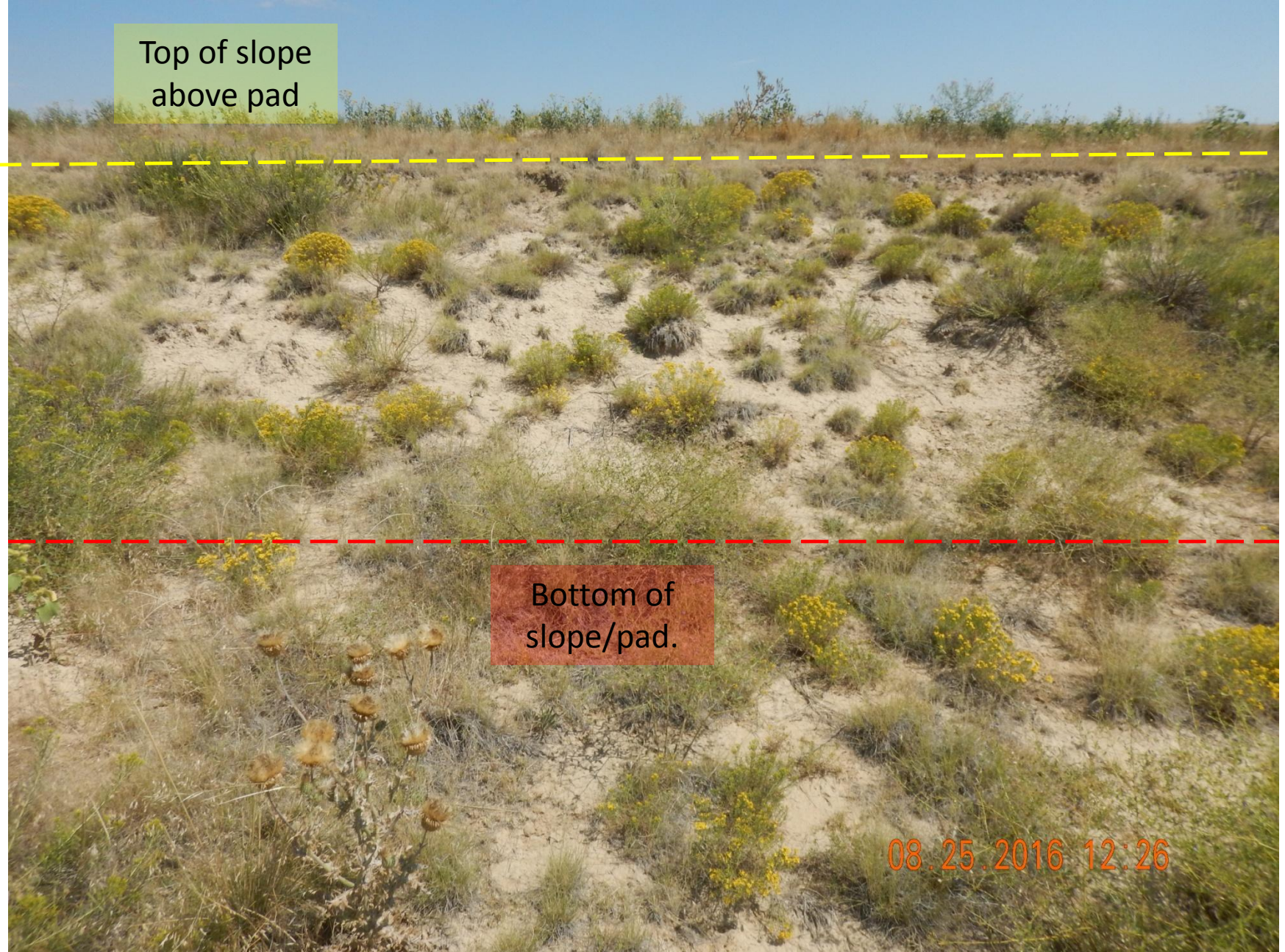
**Figure 8:** Photo taken from the southeast corner of the location, facing south. Photo shows vegetation over the reclamation area, and slope on the perimeter of the location. Note eastern perimeter/slope show signs of erosion.





**Figure 9:** Photo taken from the south end of the location, facing north. Photo shows location has not be reclaimed per reclamation regulations. 6' measuring stick used for reference.





Top of slope  
above pad

Bottom of  
slope/pad.

08.25.2016 12:26

**Figure 10:** Photo taken from the east end of the location, facing east. Photo shows erosion occurring on the slope(s) of the location.





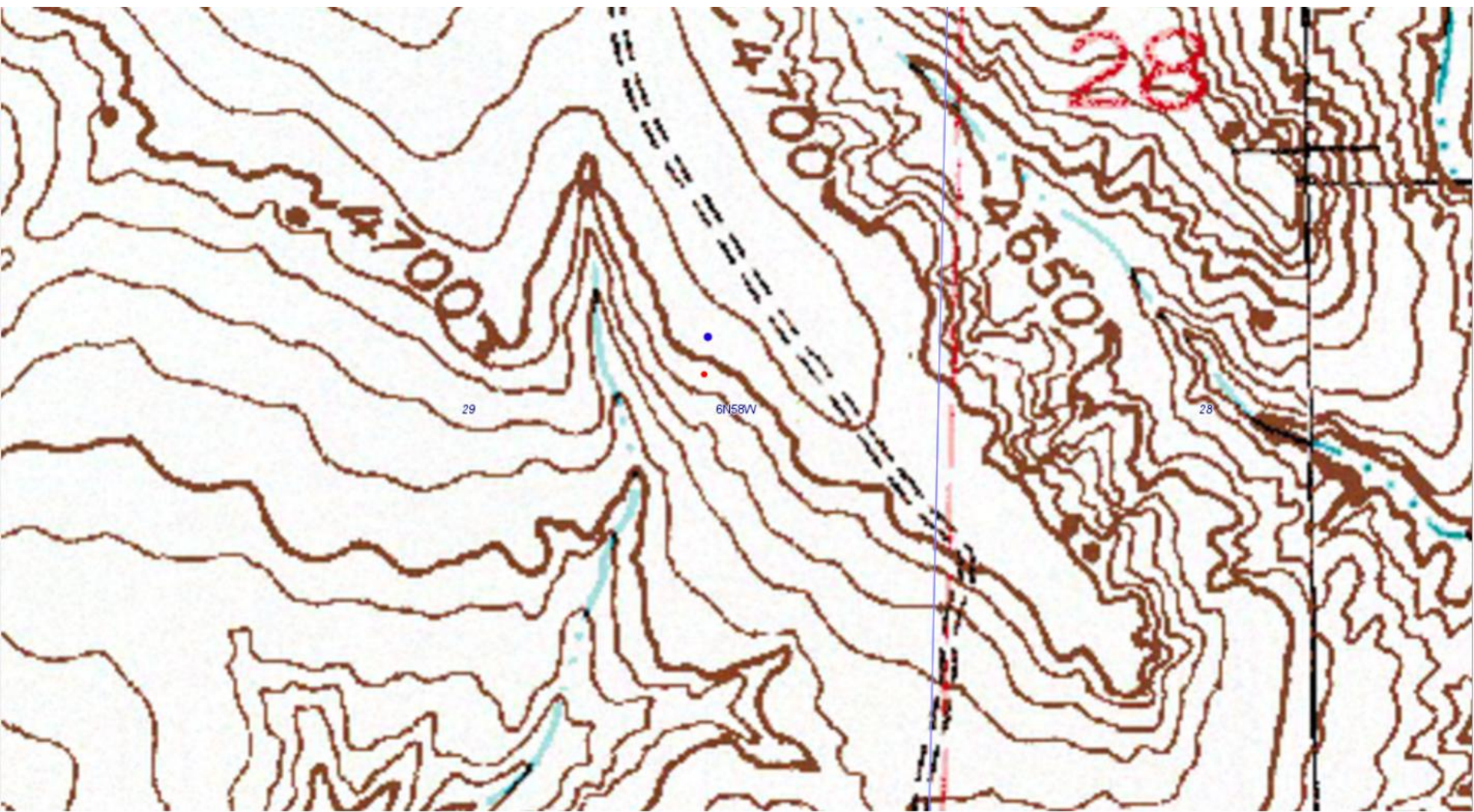
**Figure 11:** Aerial imagery (1989) of location pre-disturbance.





**Figure 12:** Most current aerial image (2013) of location. Approximate area of disturbance is 1 ac.





**Figure 13:** Map of location (blue dot) showing topography of the location and the adjacent landscape.