

# Final Reclamation Inspection

08/25/2016

Operator: Petroleum Energy Corp

Location ID: 395741

API: 087-07991

Morgan County, CO

SWSW Section 28 T6N R58W

Aaron Trujillo

Reclamation Specialist

COGCC



**COLORADO**

Department of Natural Resources



**Figure 1:** Photo of GPS confirming location.





**Figure 2:** Photo taken from the northwest corner of the location, facing east. Photo shows vegetation over the reclamation area. Note erosion on the slopes of the northern perimeter of the location.





**Figure 3:** Photo taken from the northwest corner of the location, facing south. Photo shows vegetation over the reclamation area.





**Figure 4:** Photo taken from the north end of the location, facing east. Photo shows areas of erosion on the north end of the location.





**Figure 5:** Photo taken from the northeast corner of the location, facing west. Photo shows vegetation over the reclamation area.





**Figure 6:** Photo taken from the northeast corner of the location, facing south. Photo shows vegetation over the reclamation area.





**Figure 7:** Photo taken from the southeast corner of the location, facing north. Photo shows vegetation over the reclamation area.





**Figure 8:** Photo taken from the southeast corner of the location, facing west. Photo shows vegetation over the reclamation area.





**Figure 9:** Photo taken from the southwest corner of the location, facing west. Photo shows vegetation over the reclamation area.





**Figure 10:** Photo taken from the southwest corner of the location, facing east. Photo shows vegetation over the reclamation area.





**Figure 11:** Photo taken from the location. Photo shows areas where gravel had not been removed from the location. 6' measuring stick for reference.





**Figure 12:** Photo taken from the northeast corner of the location, facing northwest. Photo shows areas of the access road experiencing erosion. 6' measuring stick for reference.





**Figure 13:** Photo taken from the access road north of the location, facing southeast. Photo shows areas of the access road experiencing erosion.





**Figure 14:** Photo taken from the access road northwest of the location, facing northwest. Photo shows remaining access road to the west has been reclaimed.





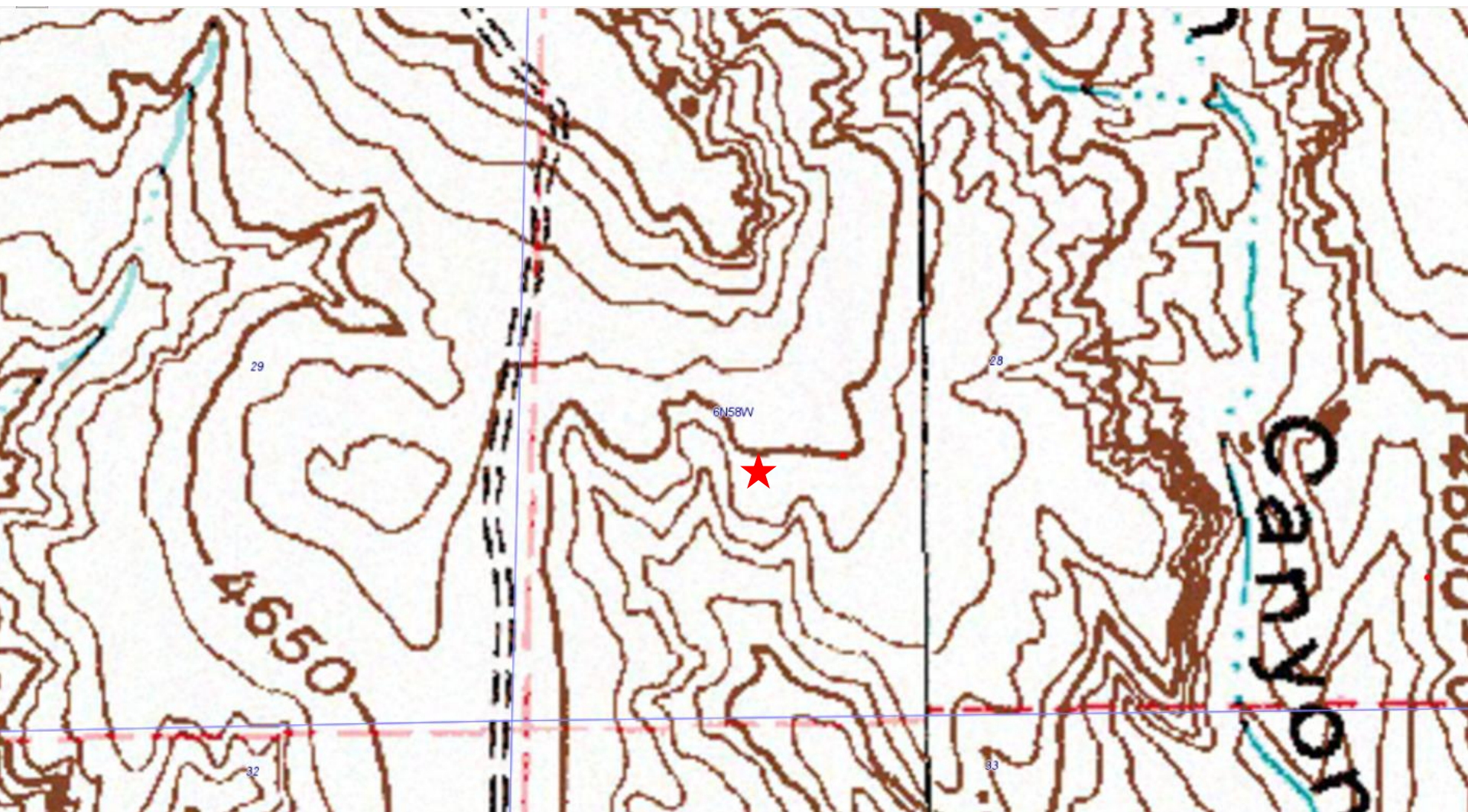
**Figure 15:** Aerial imagery (1989) of location pre-disturbance





**Figure 16:** Most current aerial image (2013) of location. Approximate area of disturbance is 1/2 ac. Note approximate areas of access road and location experiencing erosion





**Figure 17:** Map of location (red star) showing topography of the location and the adjacent landscape.