



Project: Mesa County, CO  
 Site: Piceance 29-07 Pad  
 Well: Piceance 29-03E  
 Wellbore: Wellbore #1  
 Design: Design #1  
 Latitude: 39.250956  
 Longitude: -107.791611  
 Ground Level: 7496.0  
 well @ 7518.0usft (Patterson #306)



PROJECT DETAILS: Mesa County, CO

Geodetic System: US State Plane 1983  
 Datum: North American Datum 1983  
 Ellipsoid: GRS 1980  
 Zone: Colorado Central Zone  
 System Datum: Mean Sea Level

REFERENCE INFORMATION

Co-ordinate (N/E) Reference: Well Piceance 29-03E, True North  
 Vertical (TVD) Reference: well @ 7518.0usft (Patterson #306)  
 Section (VS) Reference: Slot - (0.0N, 0.0E)  
 Measured Depth Reference: well @ 7518.0usft (Patterson #306)  
 Calculation Method: Minimum Curvature

WELL DETAILS: Piceance 29-03E

Ground Level: 7496.0  

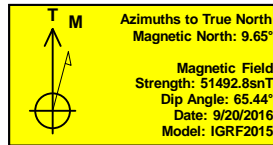
+N/-S	+E/-W	Northing	Easting	Latitude	Longitude
0.0	0.0	1524479.44	2351123.72	39.250956	-107.791611

WELLBORE TARGET DETAILS (MAP CO-ORDINATES AND LAT/LONG)

Name	TVD	+N/-S	+E/-W	Northing	Easting	Latitude	Longitude
Piceance 29-03E	7840.0	991.8	913.2	1525447.88	2352061.68	39.253679	-107.788386

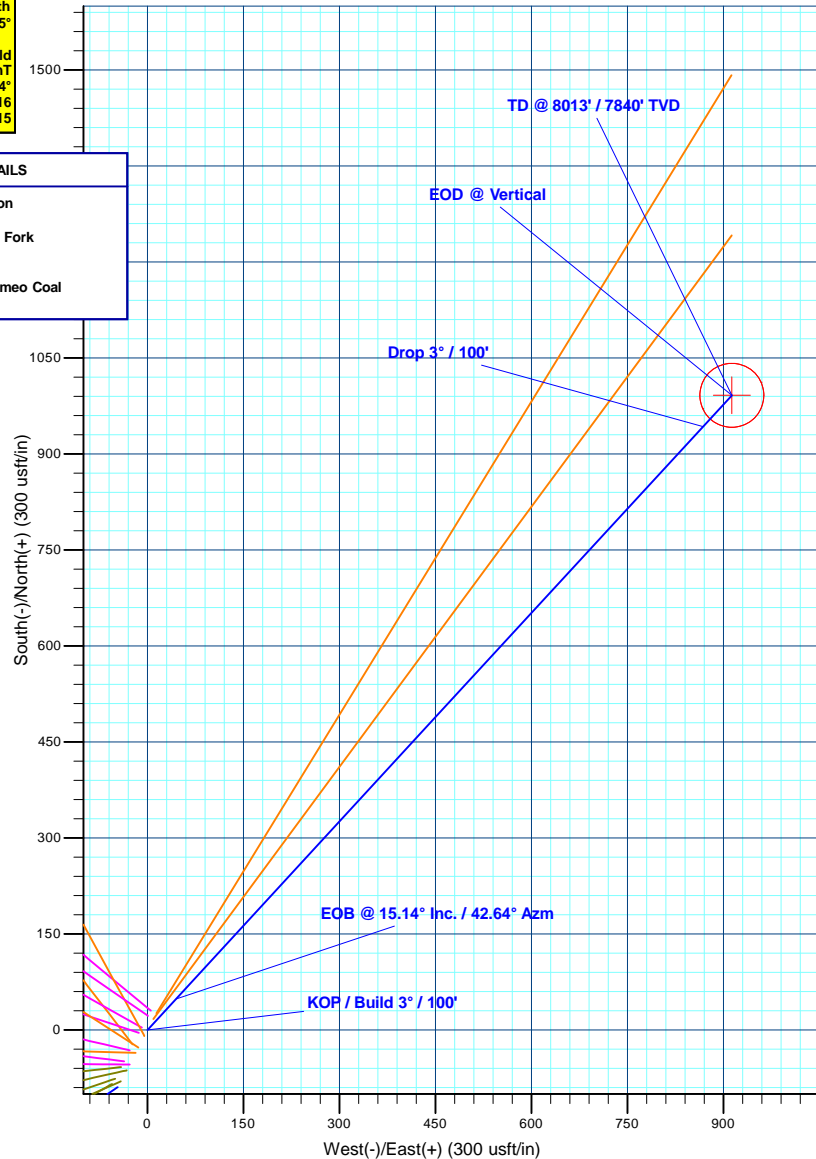
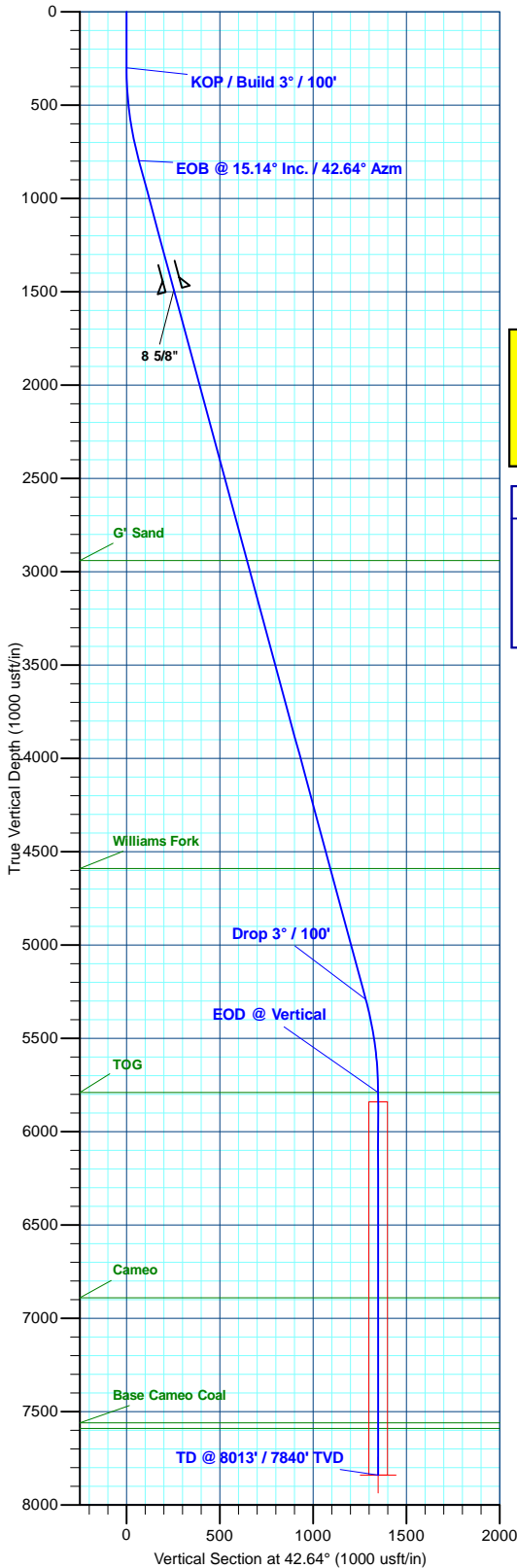
SECTION DETAILS

MD	Inc	Azi	TVD	+N/-S	+E/-W	Dleg	TFace	VSect	Annotation
0.0	0.00	0.00	0.0	0.0	0.0	0.00	0.00	0.0	KOP / Build 3° / 100'
300.0	0.00	0.00	300.0	0.0	0.0	0.00	0.00	0.0	EOB @ 15.14° Inc. / 42.64° Azm
804.7	15.14	42.64	798.9	48.8	44.9	3.00	42.64	66.3	Drop 3° / 100'
5458.6	15.14	42.64	5291.1	943.0	868.3	0.00	0.00	1281.9	EOD @ Vertical
5963.3	0.00	0.00	5790.0	991.8	913.2	3.00	180.00	1348.2	TD @ 8013' / 7840' TVD
8013.3	0.00	0.00	7840.0	991.8	913.2	0.00	0.00	1348.2	



FORMATION TOP DETAILS

TVDPath	MDPath	Formation
2940.0	3022.9	G' Sand
4590.0	4732.2	Williams Fork
5790.0	5963.3	TOG
6890.0	7063.3	Cameo
7560.0	7733.3	Base Cameo Coal
7590.0	7763.3	Rollins



Plan: Design #1 (Piceance 29-03E/Wellbore #1)

Created By: Will Jircik Date: 9:20, September 22 2016