

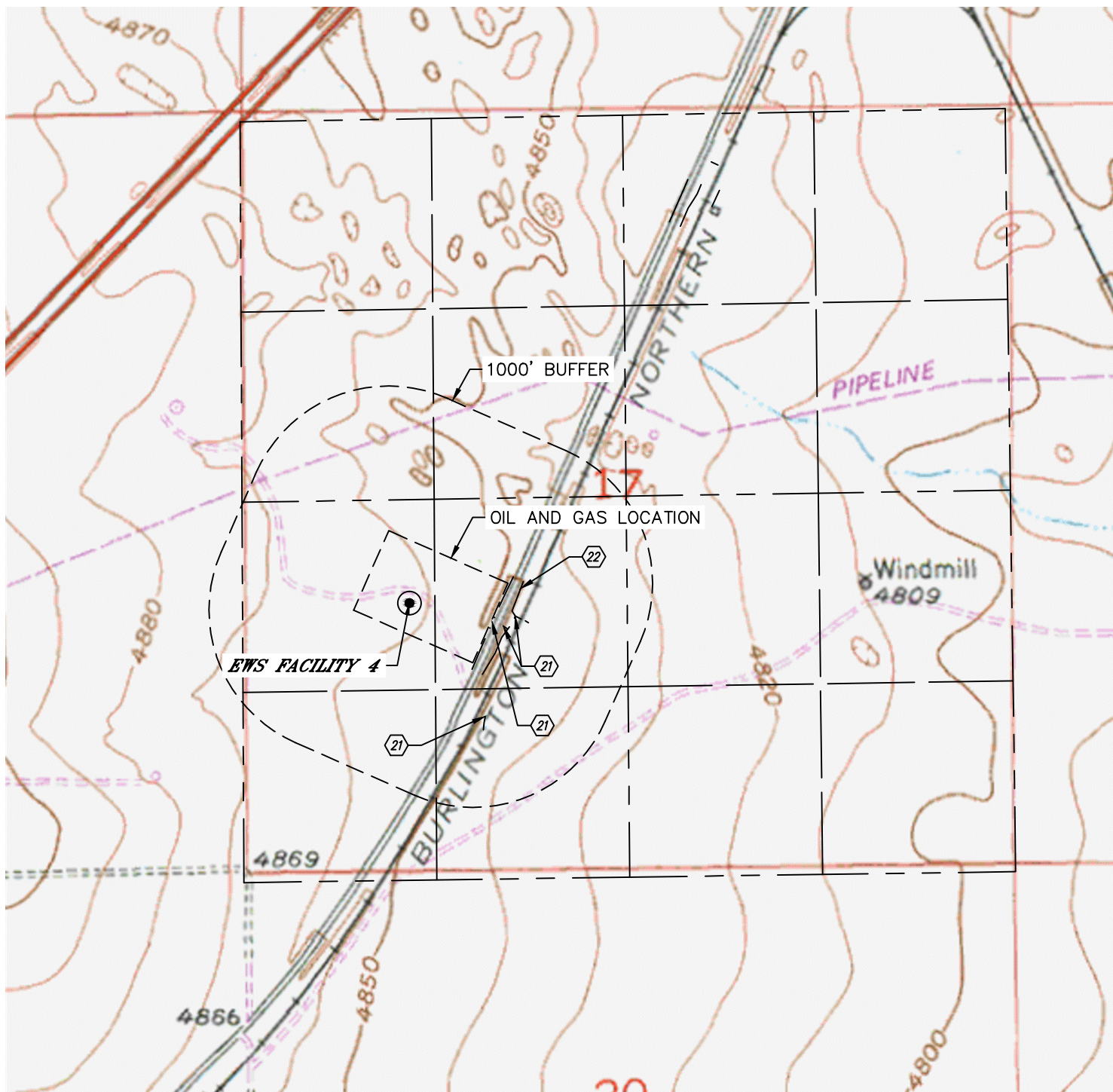


Lat40°, Inc. 6250 W. 10th Street, Unit 2, Greeley, CO 970-515-5294

# HYDROLOGY MAP

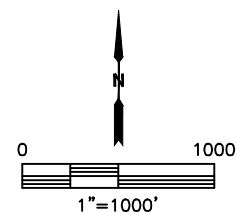
**EWS FACILITY 4**

SECTION: 17  
TOWNSHIP: 2N  
RANGE: 63W  
6TH. P.M.  
WELD COUNTY, CO



DISTANCES MEASURED FROM THE EDGE OF THE OIL AND GAS LOCATION.

- ②① DITCH 6', 91', 137' & 380' SE
- ②② BORROW DITCH 96' SE



DATE: 10/17/2016  
PROJECT#: 2016111