



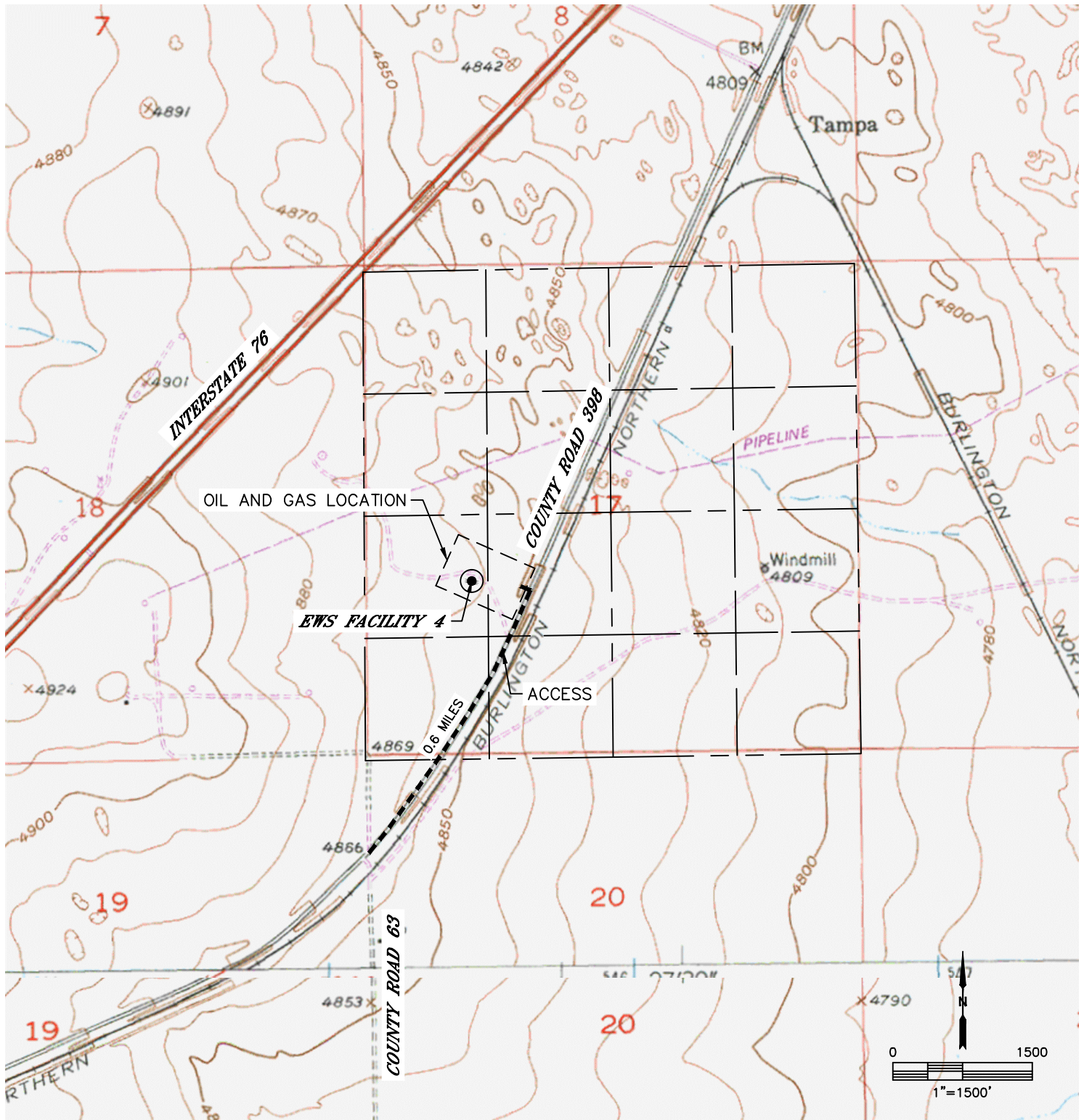
Lat40°, Inc. 6250 W. 10th Street, Unit 2, Greeley, CO 970-515-5294

## ACCESS ROAD MAP

**EWS FACILITY 4**

SECTION: 17  
TOWNSHIP: 2N  
RANGE: 63W  
6TH. P.M.  
WELD COUNTY, CO

DRIVING DIRECTIONS TO THE EWS FACILITY 4:  
FROM THE INTERSECTION OF COUNTY ROAD 398 AND COUNTY ROAD 63, DRIVE NORTHEAST ON COUNTY ROAD 398 FOR 0.6 MILES. TURN NORTHWEST ONTO PROPOSED ROAD AND DRIVE TO THE PRODUCTION FACILITY LOCATION.





Lat40°, Inc. 6250 W. 10th Street, Unit 2, Greeley, CO 970-515-5294

# ACCESS ROAD MAP

**EWS FACILITY 4**

SECTION: 17  
TOWNSHIP: 2N  
RANGE: 63W  
6TH. P.M.  
WELD COUNTY, CO

