



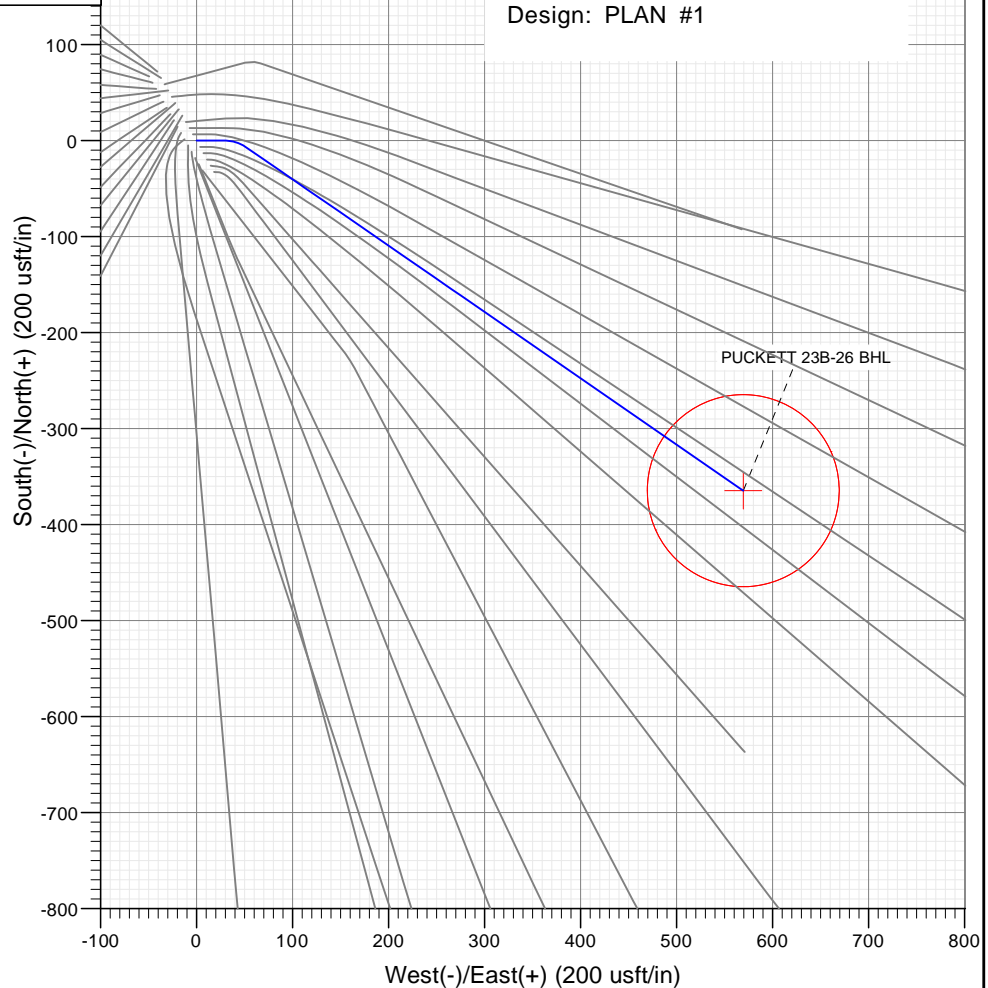
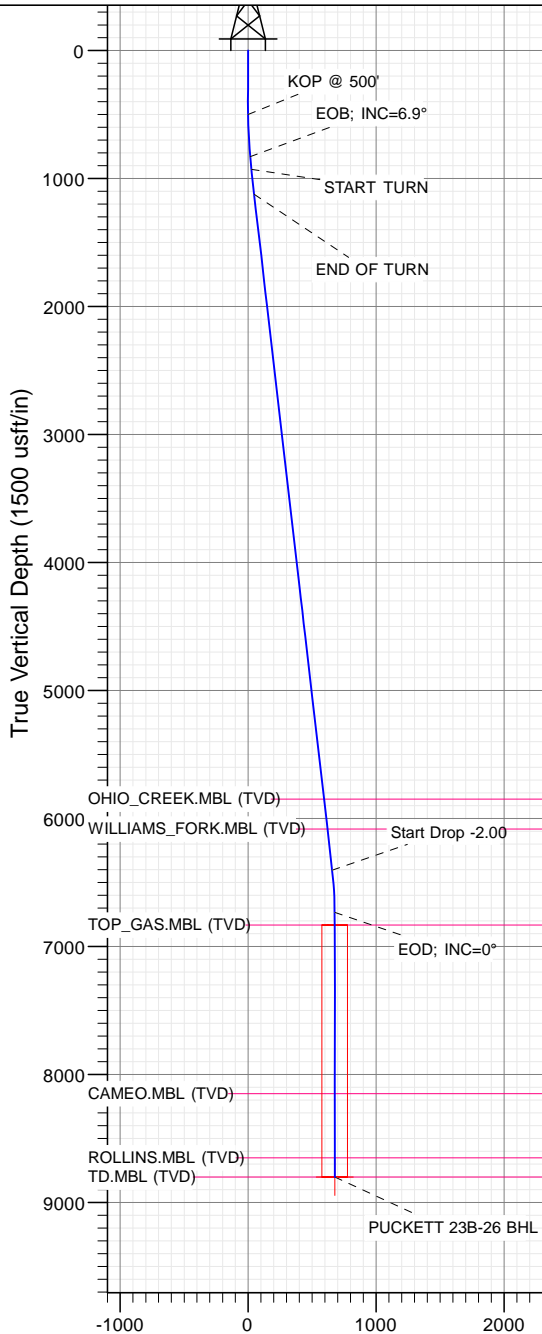
SECTION DETAILS

Sec	MD	Inc	Azi	TVD	+N/-S	+E/-W	Dleg	TFace	VSect	Target
1	0.00	0.00	0.00	0.00	0.00	0.00	0.00	0.00	0.00	
2	500.00	0.00	0.00	500.00	0.00	0.00	0.00	0.00	0.00	
3	830.00	6.60	90.00	829.27	0.00	18.99	2.00	90.00	15.99	
4	930.00	6.60	90.00	928.61	0.00	30.48	0.00	0.00	25.67	
5	1126.10	6.60	124.64	1123.48	-6.41	51.03	2.00	107.18	46.44	
6	6441.49	6.60	124.64	6403.62	-353.75	553.87	0.00	0.00	657.20	
7	6771.60	0.00	0.00	6733.00	-364.55	569.50	2.00	180.00	676.19	
8	8838.60	0.00	0.00	8800.00	-364.55	569.50	0.00	0.00	676.19	PUCKETT 23B-26 BHL

PLAN #1
PUCKETT 23B-26
XXX16; LR
30' KB @ 8322.00usft
Ground Level @ 8322.00
NAD 1927 - Western US
Well PUCKETT 23B-26, True North

Type	Target	Azimuth	Origin Type	N/S	E/W	From TVD
TD	No Target (Freehand)	122.62	Spot	0.00	0.00	0.00
Name	PUCKETT 23B-26 BHL	TVD	+N/-S	+E/-W	Latitude	Longitude
		8800.00	-364.55	569.50	39.493902	-108.186053

Project: Garfield County, CO (UTM 12N)
Site: S26-T6S-R97W (MESA F26)
Well: PUCKETT 23B-26
Wellbore: OH
Design: PLAN #1



FORMATION TOP DETAILS

TVDPPath	MDPath	Formation
5848.00	5882.16	OHIO_CREEK.MBL (TVD)
6083.00	6118.73	WILLIAMS_FORK.MBL (TVD)
6833.00	6871.60	TOP_GAS.MBL (TVD)
8150.00	8188.60	CAMEO.MBL (TVD)
8650.00	8688.60	ROLLINS.MBL (TVD)
8800.00	8838.60	TD.MBL (TVD)



Azimuths to True North
Magnetic North: 9.78°

Magnetic Field
Strength: 51819.5snT
Dip Angle: 65.83°
Date: 9/23/2016
Model: HDGM

Vertical Section at 122.62° (1500 usft/in)

WELL DETAILS: PUCKETT 23B-26

+N/-S	+E/-W	Northing	Ground Level:	8322.00	Latitude	Longitude
0.00	0.00	14354498.60	Easting	2433189.40	39.494902	-108.190070

CATHEDRAL



Cathedral Energy Services

Planning Report

Database:	USA EDM 5000 Multi Users DB	Local Co-ordinate Reference:	Well PUCKETT 23B-26
Company:	Caerus Oil & Gas	TVD Reference:	30' KB @ 8352.00usft
Project:	Garfield County, CO (UTM 12N)	MD Reference:	30' KB @ 8352.00usft
Site:	S26-T6S-R97W (MESA F26)	North Reference:	True
Well:	PUCKETT 23B-26	Survey Calculation Method:	Minimum Curvature
Wellbore:	OH		
Design:	PLAN #1		

Project	Garfield County, CO (UTM 12N)		
Map System:	Universal Transverse Mercator (US Survey Feet)	System Datum:	Mean Sea Level
Geo Datum:	NAD 1927 - Western US		
Map Zone:	Zone 12N (114 W to 108 W)		

Site	S26-T6S-R97W (MESA F26)		
Site Position:		Northing:	14,354,512.70 usft
From:	Map	Easting:	2,433,169.20 usft
Position Uncertainty:	0.00 usft	Slot Radius:	13-3/16"
		Latitude:	39.494943
		Longitude:	-108.190140
		Grid Convergence:	1.79 °

Well	PUCKETT 23B-26		
Well Position	+N/-S	0.00 usft	Northing:
	+E/-W	0.00 usft	Easting:
Position Uncertainty	0.00 usft	Wellhead Elevation:	0.00 usft
		Latitude:	39.494902
		Longitude:	-108.190070
		Ground Level:	8,322.00 usft

Wellbore	OH				
Magnetics	Model Name	Sample Date	Declination	Dip Angle	Field Strength
			(°)	(°)	(nT)
	HDGM	9/23/2016	9.78	65.83	51,820

Design	PLAN #1			
Audit Notes:				
Version:	Phase:	PLAN	Tie On Depth:	0.00
Vertical Section:	Depth From (TVD)	+N/-S	+E/-W	Direction
	(usft)	(usft)	(usft)	(°)
	0.00	0.00	0.00	122.62

Plan Sections										
Measured Depth (usft)	Inclination (°)	Azimuth (°)	Vertical Depth (usft)	+N/-S (usft)	+E/-W (usft)	Dogleg Rate (°/100usft)	Build Rate (°/100usft)	Turn Rate (°/100usft)	TFO (°)	Target
0.00	0.00	0.00	0.00	0.00	0.00	0.00	0.00	0.00	0.00	
500.00	0.00	0.00	500.00	0.00	0.00	0.00	0.00	0.00	0.00	
830.00	6.60	90.00	829.27	0.00	18.99	2.00	2.00	0.00	90.00	
930.00	6.60	90.00	928.61	0.00	30.48	0.00	0.00	0.00	0.00	
1,126.10	6.60	124.64	1,123.48	-6.41	51.03	2.00	0.00	17.66	107.18	
6,441.49	6.60	124.64	6,403.62	-353.75	553.87	0.00	0.00	0.00	0.00	
6,771.60	0.00	0.00	6,733.00	-364.55	569.50	2.00	-2.00	0.00	180.00	
8,838.60	0.00	0.00	8,800.00	-364.55	569.50	0.00	0.00	0.00	0.00	PUCKETT 23B-26 BH

Cathedral Energy Services

Planning Report

Database:	USA EDM 5000 Multi Users DB	Local Co-ordinate Reference:	Well PUCKETT 23B-26
Company:	Caerus Oil & Gas	TVD Reference:	30' KB @ 8352.00usft
Project:	Garfield County, CO (UTM 12N)	MD Reference:	30' KB @ 8352.00usft
Site:	S26-T6S-R97W (MESA F26)	North Reference:	True
Well:	PUCKETT 23B-26	Survey Calculation Method:	Minimum Curvature
Wellbore:	OH		
Design:	PLAN #1		

Planned Survey

Measured Depth (usft)	Inclination (°)	Azimuth (°)	Vertical Depth (usft)	+N/-S (usft)	+E/-W (usft)	Vertical Section (usft)	Dogleg Rate (°/100usft)	Build Rate (°/100u)	Comments / Formations
0.00	0.00	0.00	0.00	0.00	0.00	0.00	0.00	0.00	
100.00	0.00	0.00	100.00	0.00	0.00	0.00	0.00	0.00	
200.00	0.00	0.00	200.00	0.00	0.00	0.00	0.00	0.00	
300.00	0.00	0.00	300.00	0.00	0.00	0.00	0.00	0.00	
400.00	0.00	0.00	400.00	0.00	0.00	0.00	0.00	0.00	
500.00	0.00	0.00	500.00	0.00	0.00	0.00	0.00	0.00	KOP @ 500'
600.00	2.00	90.00	599.98	0.00	1.75	1.47	2.00	2.00	
700.00	4.00	90.00	699.84	0.00	6.98	5.88	2.00	2.00	
800.00	6.00	90.00	799.45	0.00	15.69	13.22	2.00	2.00	
830.00	6.60	90.00	829.27	0.00	18.99	15.99	2.00	2.00	EOB; INC=6.9°
900.00	6.60	90.00	898.81	0.00	27.03	22.77	0.00	0.00	
930.00	6.60	90.00	928.61	0.00	30.48	25.67	0.00	0.00	START TURN
1,000.00	6.33	102.22	998.17	-0.82	38.27	32.68	2.00	-0.39	
1,100.00	6.47	120.20	1,097.55	-4.82	48.53	43.47	2.00	0.14	
1,126.10	6.60	124.64	1,123.48	-6.41	51.03	46.44	2.00	0.52	END OF TURN
1,200.00	6.60	124.64	1,196.89	-11.24	58.02	54.93	0.00	0.00	
1,300.00	6.60	124.64	1,296.23	-17.77	67.48	66.42	0.00	0.00	
1,400.00	6.60	124.64	1,395.57	-24.31	76.94	77.91	0.00	0.00	
1,500.00	6.60	124.64	1,494.90	-30.84	86.40	89.40	0.00	0.00	
1,600.00	6.60	124.64	1,594.24	-37.38	95.86	100.89	0.00	0.00	
1,700.00	6.60	124.64	1,693.58	-43.91	105.32	112.38	0.00	0.00	
1,800.00	6.60	124.64	1,792.91	-50.45	114.78	123.87	0.00	0.00	
1,900.00	6.60	124.64	1,892.25	-56.98	124.24	135.36	0.00	0.00	
2,000.00	6.60	124.64	1,991.59	-63.52	133.70	146.85	0.00	0.00	
2,100.00	6.60	124.64	2,090.93	-70.05	143.16	158.34	0.00	0.00	
2,200.00	6.60	124.64	2,190.26	-76.59	152.62	169.83	0.00	0.00	
2,300.00	6.60	124.64	2,289.60	-83.12	162.08	181.32	0.00	0.00	
2,400.00	6.60	124.64	2,388.94	-89.65	171.54	192.81	0.00	0.00	
2,500.00	6.60	124.64	2,488.27	-96.19	181.00	204.30	0.00	0.00	
2,600.00	6.60	124.64	2,587.61	-102.72	190.46	215.79	0.00	0.00	
2,700.00	6.60	124.64	2,686.95	-109.26	199.92	227.29	0.00	0.00	
2,800.00	6.60	124.64	2,786.28	-115.79	209.38	238.78	0.00	0.00	
2,900.00	6.60	124.64	2,885.62	-122.33	218.84	250.27	0.00	0.00	
3,000.00	6.60	124.64	2,984.96	-128.86	228.30	261.76	0.00	0.00	
3,100.00	6.60	124.64	3,084.29	-135.40	237.76	273.25	0.00	0.00	
3,200.00	6.60	124.64	3,183.63	-141.93	247.22	284.74	0.00	0.00	
3,300.00	6.60	124.64	3,282.97	-148.47	256.68	296.23	0.00	0.00	
3,400.00	6.60	124.64	3,382.30	-155.00	266.14	307.72	0.00	0.00	
3,500.00	6.60	124.64	3,481.64	-161.54	275.60	319.21	0.00	0.00	
3,600.00	6.60	124.64	3,580.98	-168.07	285.06	330.70	0.00	0.00	
3,700.00	6.60	124.64	3,680.31	-174.60	294.52	342.19	0.00	0.00	
3,800.00	6.60	124.64	3,779.65	-181.14	303.98	353.68	0.00	0.00	
3,900.00	6.60	124.64	3,878.99	-187.67	313.44	365.17	0.00	0.00	
4,000.00	6.60	124.64	3,978.33	-194.21	322.90	376.66	0.00	0.00	
4,100.00	6.60	124.64	4,077.66	-200.74	332.36	388.15	0.00	0.00	
4,200.00	6.60	124.64	4,177.00	-207.28	341.82	399.64	0.00	0.00	
4,300.00	6.60	124.64	4,276.34	-213.81	351.29	411.13	0.00	0.00	
4,400.00	6.60	124.64	4,375.67	-220.35	360.75	422.62	0.00	0.00	
4,500.00	6.60	124.64	4,475.01	-226.88	370.21	434.11	0.00	0.00	
4,600.00	6.60	124.64	4,574.35	-233.42	379.67	445.60	0.00	0.00	
4,700.00	6.60	124.64	4,673.68	-239.95	389.13	457.09	0.00	0.00	
4,800.00	6.60	124.64	4,773.02	-246.49	398.59	468.59	0.00	0.00	

Cathedral Energy Services

Planning Report

Database:	USA EDM 5000 Multi Users DB	Local Co-ordinate Reference:	Well PUCKETT 23B-26
Company:	Caerus Oil & Gas	TVD Reference:	30' KB @ 8352.00usft
Project:	Garfield County, CO (UTM 12N)	MD Reference:	30' KB @ 8352.00usft
Site:	S26-T6S-R97W (MESA F26)	North Reference:	True
Well:	PUCKETT 23B-26	Survey Calculation Method:	Minimum Curvature
Wellbore:	OH		
Design:	PLAN #1		

Planned Survey									
Measured Depth (usft)	Inclination (°)	Azimuth (°)	Vertical Depth (usft)	+N/-S (usft)	+E/-W (usft)	Vertical Section (usft)	Dogleg Rate (°/100usft)	Build Rate (°/100u)	Comments / Formations
4,900.00	6.60	124.64	4,872.36	-253.02	408.05	480.08	0.00	0.00	
5,000.00	6.60	124.64	4,971.69	-259.55	417.51	491.57	0.00	0.00	
5,100.00	6.60	124.64	5,071.03	-266.09	426.97	503.06	0.00	0.00	
5,200.00	6.60	124.64	5,170.37	-272.62	436.43	514.55	0.00	0.00	
5,300.00	6.60	124.64	5,269.70	-279.16	445.89	526.04	0.00	0.00	
5,400.00	6.60	124.64	5,369.04	-285.69	455.35	537.53	0.00	0.00	
5,500.00	6.60	124.64	5,468.38	-292.23	464.81	549.02	0.00	0.00	
5,600.00	6.60	124.64	5,567.71	-298.76	474.27	560.51	0.00	0.00	
5,700.00	6.60	124.64	5,667.05	-305.30	483.73	572.00	0.00	0.00	
5,800.00	6.60	124.64	5,766.39	-311.83	493.19	583.49	0.00	0.00	
5,882.16	6.60	124.64	5,848.00	-317.20	500.96	592.93	0.00	0.00	OHIO_CREEK.MBL (TVD)
5,900.00	6.60	124.64	5,865.73	-318.37	502.65	594.98	0.00	0.00	
6,000.00	6.60	124.64	5,965.06	-324.90	512.11	606.47	0.00	0.00	
6,100.00	6.60	124.64	6,064.40	-331.44	521.57	617.96	0.00	0.00	
6,118.73	6.60	124.64	6,083.00	-332.66	523.34	620.11	0.00	0.00	WILLIAMS_FORK.MBL (TVD)
6,200.00	6.60	124.64	6,163.74	-337.97	531.03	629.45	0.00	0.00	
6,300.00	6.60	124.64	6,263.07	-344.50	540.49	640.94	0.00	0.00	
6,400.00	6.60	124.64	6,362.41	-351.04	549.95	652.43	0.00	0.00	
6,441.49	6.60	124.64	6,403.62	-353.75	553.87	657.20	0.00	0.00	Start Drop -2.00
6,500.00	5.43	124.64	6,461.81	-357.24	558.92	663.33	2.00	-2.00	
6,600.00	3.43	124.64	6,561.51	-361.63	565.28	671.05	2.00	-2.00	
6,700.00	1.43	124.64	6,661.41	-364.04	568.77	675.29	2.00	-2.00	
6,771.60	0.00	0.00	6,733.00	-364.55	569.50	676.19	2.00	-2.00	EOD; INC=0°
6,800.00	0.00	0.00	6,761.40	-364.55	569.50	676.19	0.00	0.00	
6,871.60	0.00	0.00	6,833.00	-364.55	569.50	676.19	0.00	0.00	TOP_GAS.MBL (TVD)
6,900.00	0.00	0.00	6,861.40	-364.55	569.50	676.19	0.00	0.00	
7,000.00	0.00	0.00	6,961.40	-364.55	569.50	676.19	0.00	0.00	
7,100.00	0.00	0.00	7,061.40	-364.55	569.50	676.19	0.00	0.00	
7,200.00	0.00	0.00	7,161.40	-364.55	569.50	676.19	0.00	0.00	
7,300.00	0.00	0.00	7,261.40	-364.55	569.50	676.19	0.00	0.00	
7,400.00	0.00	0.00	7,361.40	-364.55	569.50	676.19	0.00	0.00	
7,500.00	0.00	0.00	7,461.40	-364.55	569.50	676.19	0.00	0.00	
7,600.00	0.00	0.00	7,561.40	-364.55	569.50	676.19	0.00	0.00	
7,700.00	0.00	0.00	7,661.40	-364.55	569.50	676.19	0.00	0.00	
7,800.00	0.00	0.00	7,761.40	-364.55	569.50	676.19	0.00	0.00	
7,900.00	0.00	0.00	7,861.40	-364.55	569.50	676.19	0.00	0.00	
8,000.00	0.00	0.00	7,961.40	-364.55	569.50	676.19	0.00	0.00	
8,100.00	0.00	0.00	8,061.40	-364.55	569.50	676.19	0.00	0.00	
8,188.60	0.00	0.00	8,150.00	-364.55	569.50	676.19	0.00	0.00	CAMEO.MBL (TVD)
8,200.00	0.00	0.00	8,161.40	-364.55	569.50	676.19	0.00	0.00	
8,300.00	0.00	0.00	8,261.40	-364.55	569.50	676.19	0.00	0.00	
8,400.00	0.00	0.00	8,361.40	-364.55	569.50	676.19	0.00	0.00	
8,500.00	0.00	0.00	8,461.40	-364.55	569.50	676.19	0.00	0.00	
8,600.00	0.00	0.00	8,561.40	-364.55	569.50	676.19	0.00	0.00	
8,688.60	0.00	0.00	8,650.00	-364.55	569.50	676.19	0.00	0.00	ROLLINS.MBL (TVD)
8,700.00	0.00	0.00	8,661.40	-364.55	569.50	676.19	0.00	0.00	
8,800.00	0.00	0.00	8,761.40	-364.55	569.50	676.19	0.00	0.00	
8,838.60	0.00	0.00	8,800.00	-364.55	569.50	676.19	0.00	0.00	TD at 8838.60 - TD.MBL (TVD)

Cathedral Energy Services

Planning Report

Database:	USA EDM 5000 Multi Users DB	Local Co-ordinate Reference:	Well PUCKETT 23B-26
Company:	Caerus Oil & Gas	TVD Reference:	30' KB @ 8352.00usft
Project:	Garfield County, CO (UTM 12N)	MD Reference:	30' KB @ 8352.00usft
Site:	S26-T6S-R97W (MESA F26)	North Reference:	True
Well:	PUCKETT 23B-26	Survey Calculation Method:	Minimum Curvature
Wellbore:	OH		
Design:	PLAN #1		

Targets									
Target Name									
- hit/miss target	Dip Angle	Dip Dir.	TVD	+N/-S	+E/-W	Northing	Easting	Latitude	Longitude
- Shape	(°)	(°)	(usft)	(usft)	(usft)	(usft)	(usft)		
PUCKETT 23B-26 BHL	0.00	0.00	8,800.00	-364.55	569.50	14,354,152.00	2,433,770.00	39.493902	-108.188053
- plan hits target center									
- Circle (radius 100.00)									

Formations						
Measured Depth	Vertical Depth	Name	Lithology	Dip	Dip Direction	
(usft)	(usft)			(°)	(°)	
5,882.16	5,848.00	OHIO_CREEK.MBL (TVD)				
6,118.73	6,083.00	WILLIAMS_FORK.MBL (TVD)				
6,871.60	6,833.00	TOP_GAS.MBL (TVD)				
8,188.60	8,150.00	CAMEO.MBL (TVD)				
8,688.60	8,650.00	ROLLINS.MBL (TVD)				
8,838.60	8,800.00	TD.MBL (TVD)				

Plan Annotations					
Measured Depth	Vertical Depth	Local Coordinates			
(usft)	(usft)	+N/-S (usft)	+E/-W (usft)	Comment	
500.00	500.00	0.00	0.00	KOP @ 500'	
830.00	829.27	0.00	18.99	EOB; INC=6.9°	
930.00	928.61	0.00	30.48	START TURN	
1,126.10	1,123.48	-6.41	51.03	END OF TURN	
6,441.49	6,403.62	-353.75	553.87	Start Drop -2.00	
6,771.60	6,733.00	-364.55	569.50	EOD; INC=0°	
8,838.60	8,800.00	-364.55	569.50	TD at 8838.60	