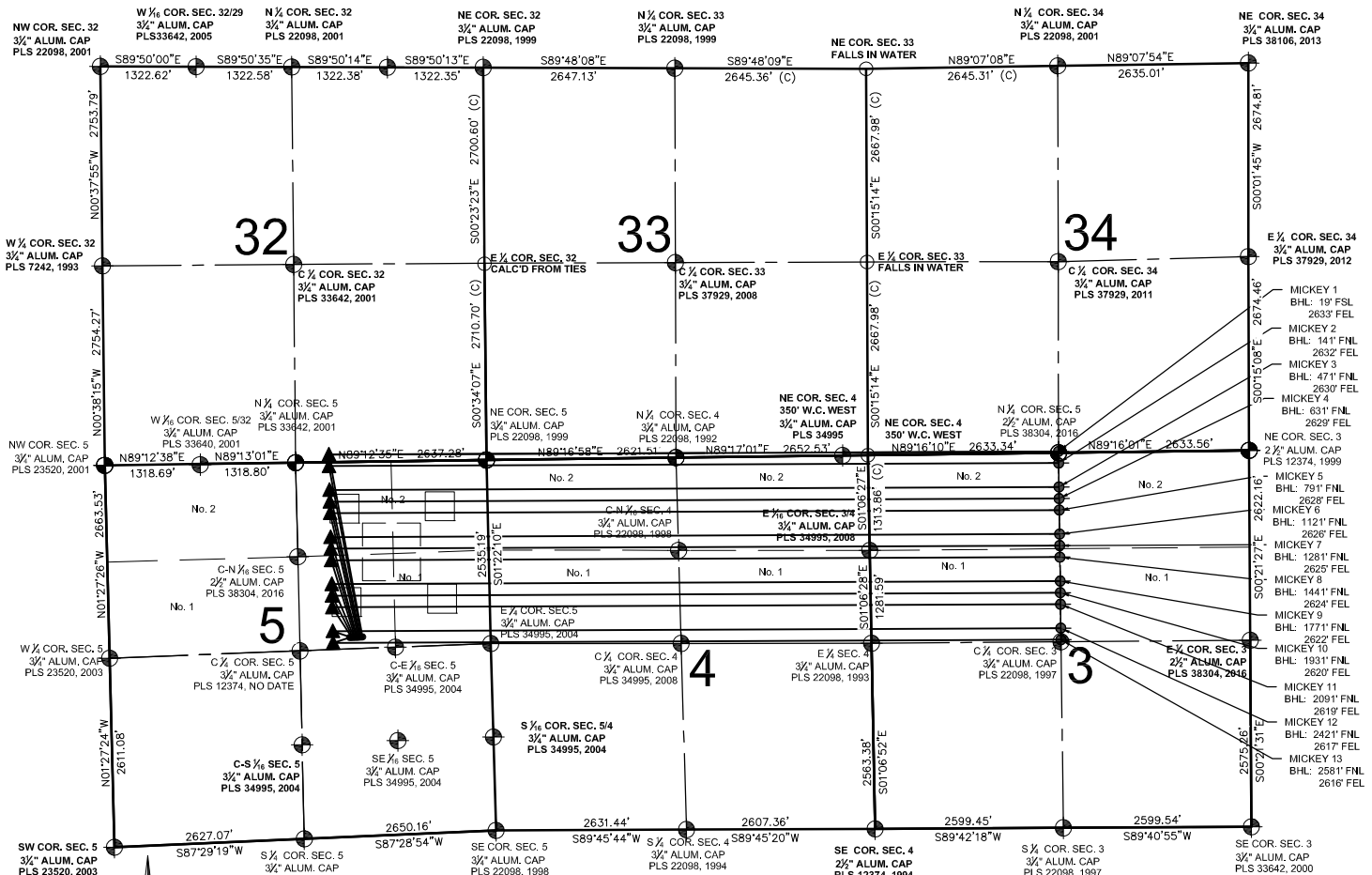


MICKEY 5-F PAD MULTI-WELL PLAN



NOTES:

- MICKEY 1 TO BE AT 2418' FNL & 1768' FEL.
- BOTTOM HOLE AT 19' FSL & 2633' FEL, SEC. 34.
- MICKEY 2 TO BE AT 2419' FNL & 1783' FEL.
- BOTTOM HOLE AT 141' FNL & 2632' FEL, SEC. 3.
- MICKEY 3 TO BE AT 2419' FNL & 1798' FEL.
- BOTTOM HOLE AT 471' FNL & 2630' FEL, SEC. 3.
- MICKEY 4 TO BE AT 2419' FNL & 1813' FEL.
- BOTTOM HOLE AT 631' FNL & 2629' FEL, SEC. 3.
- MICKEY 5 TO BE AT 2420' FNL & 1828' FEL.
- BOTTOM HOLE AT 791' FNL & 2628' FEL, SEC. 3.
- MICKEY 6 TO BE AT 2420' FNL & 1843' FEL.
- BOTTOM HOLE AT 1121' FNL & 2626' FEL, SEC. 3.
- MICKEY 7 TO BE AT 2420' FNL & 1858' FEL.
- BOTTOM HOLE AT 1281' FNL & 2625' FEL, SEC. 3.
- MICKEY 8 TO BE AT 2421' FNL & 1873' FEL.
- BOTTOM HOLE AT 1441' FNL & 2624' FEL, SEC. 3.
- MICKEY 9 TO BE AT 2421' FNL & 1888' FEL.
- BOTTOM HOLE AT 1771' FNL & 2622' FEL, SEC. 3.
- MICKEY 10 TO BE AT 2422' FNL & 1903' FEL.
- BOTTOM HOLE AT 1931' FNL & 2620' FEL, SEC. 3.
- MICKEY 11 TO BE AT 2422' FNL & 1918' FEL.
- BOTTOM HOLE AT 2091' FNL & 2619' FEL, SEC. 3.
- MICKEY 12 TO BE AT 2422' FNL & 1933' FEL.
- BOTTOM HOLE AT 2421' FNL & 2617' FEL, SEC. 3.
- MICKEY 13 TO BE AT 2423' FNL & 1948' FEL.
- BOTTOM HOLE AT 2581' FNL & 2616' FEL, SEC. 3.

LEGEND

- = EXISTING MONUMENT
- = CALCULATED POSITION
- = PROPOSED WELL
- ◆ = EXISTING WELL
- ◆ = BOTTOM HOLE
- ▲ = LANDING POINT
- LP = LANDING POINT
- BHL = BOTTOM HOLE LOCATION

NOTES:

- THIS FIELD SURVEY CONFORMS TO THE MINIMUM STANDARDS SET BY THE C.O.G.C.C., RULE NO. 215
- BEARINGS AND DISTANCE SHOWN HEREON ARE GRID AND BASED ON THE COLORADO STATE PLANE COORDINATE SYSTEM, NAD 83/2011 BETWEEN MONUMENTS AS LABELED HEREON AND ELEVATIONS SHOWN ARE NAVD 88, AS DERIVED BY GPS OBSERVATIONS.
- GRID DISTANCES ARE SHOWN, AS MEASURED IN THE FIELD, WITH TIES TO WELLS MEASURED PERPENDICULAR TO SECTION LINES.

PREPARED BY:



FIELD DATE:

09-28-16

DRAWING DATE:

10-02-16

BY:

KAD

CHECKED BY:

MLP

SITE NAME:

MICKEY 5-F PAD

SURFACE LOCATION:

LOT 1 NE 1/4 SEC. 5 T6N, R67W, 6TH P.M.

WELD COUNTY, COLORADO

PREPARED FOR:

