

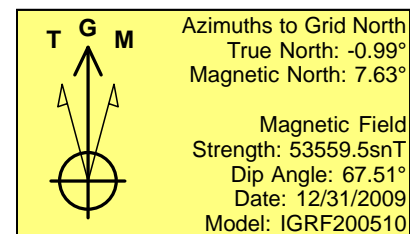
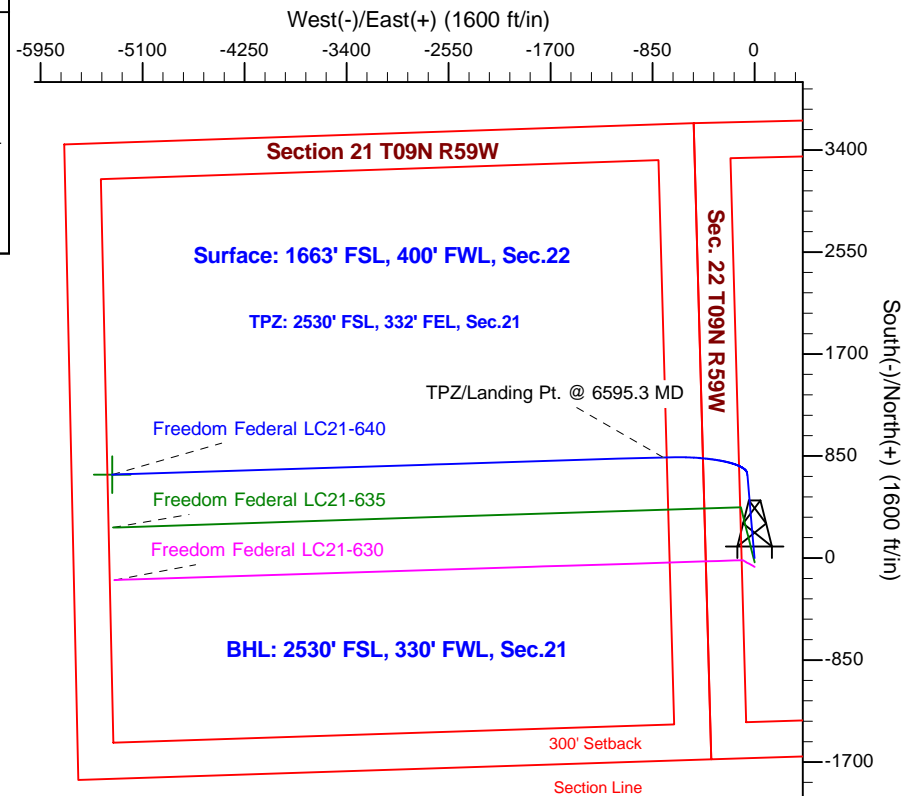
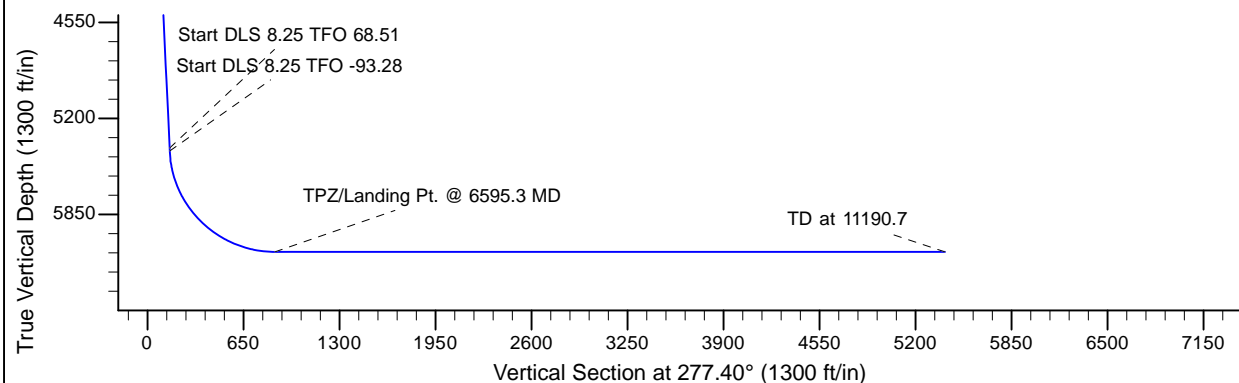
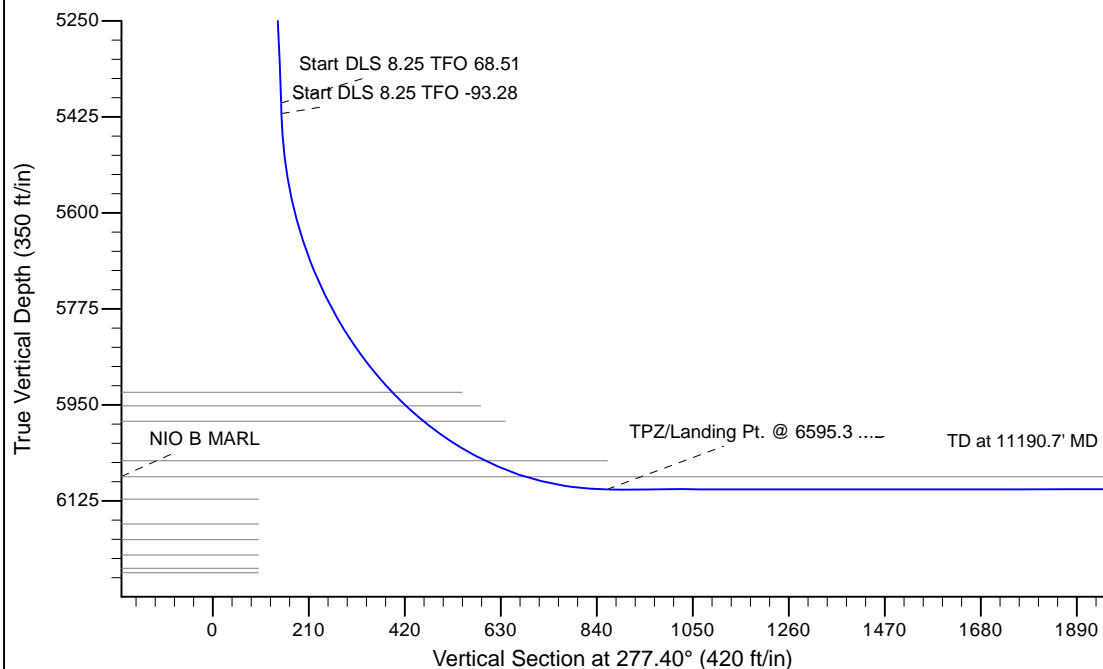
Project: Wattenberg Field
 Site: LC (Sec.22-T09N-R59W) Weld County, CO
 Well: Freedom Federal LC21-640
 Wellbore: Original Drilling
 Design: APD - Rev 1

Northern Region Drilling - Working

Geodetic System: US State Plane 1983
 Datum: North American Datum 1983
 Ellipsoid: GRS 1980
 Zone: Colorado Northern Zone
 System Datum: Mean Sea Level

SECTION DETAILS

Sec	MD	Inc	Azi	TVD	+N/-S	+E/-W	Dleg	TFace	VSec	Target
1	0.0	0.00	0.00	0.0	0.0	0.0	0.00	0.00	0.0	
2	2000.0	0.00	0.00	2000.0	0.0	0.0	0.00	0.00	0.0	
3	2637.5	12.75	355.00	2632.3	70.4	-6.2	2.00	355.00	15.2	
4	5475.2	12.75	355.00	5400.0	694.3	-60.7	0.00	0.00	149.7	
5	5495.0	13.43	1.57	5419.3	698.7	-60.9	8.25	68.51	150.4	
6	6595.3	90.00	268.19	6104.0	840.0	-760.0	8.25	-93.28	861.9	
7	11190.7	90.00	268.20	6104.0	695.4	-5353.2	0.00	90.00	5398.1	Freedom Federal LC21-640 BHL 2530'FSL, 330'FWL



WELL DETAILS: Freedom Federal LC21-640

	Northing	Easting	Latitude	Longitude
0.0	0.0	1513681.11	3423430.32	40.733430
				-103.972070

Plan: APD - Rev 1 (Freedom Federal LC21-640/Original Drilling)

Created By: Shailey Jewell Date: 15:15, October 12 2016

Checked: _____ Date: _____

Reviewed: _____ Date: _____

Approved: _____ Date: _____