

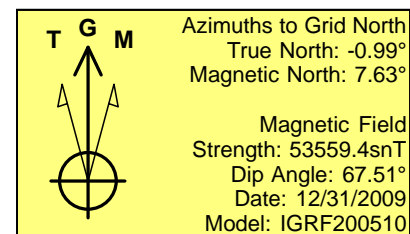
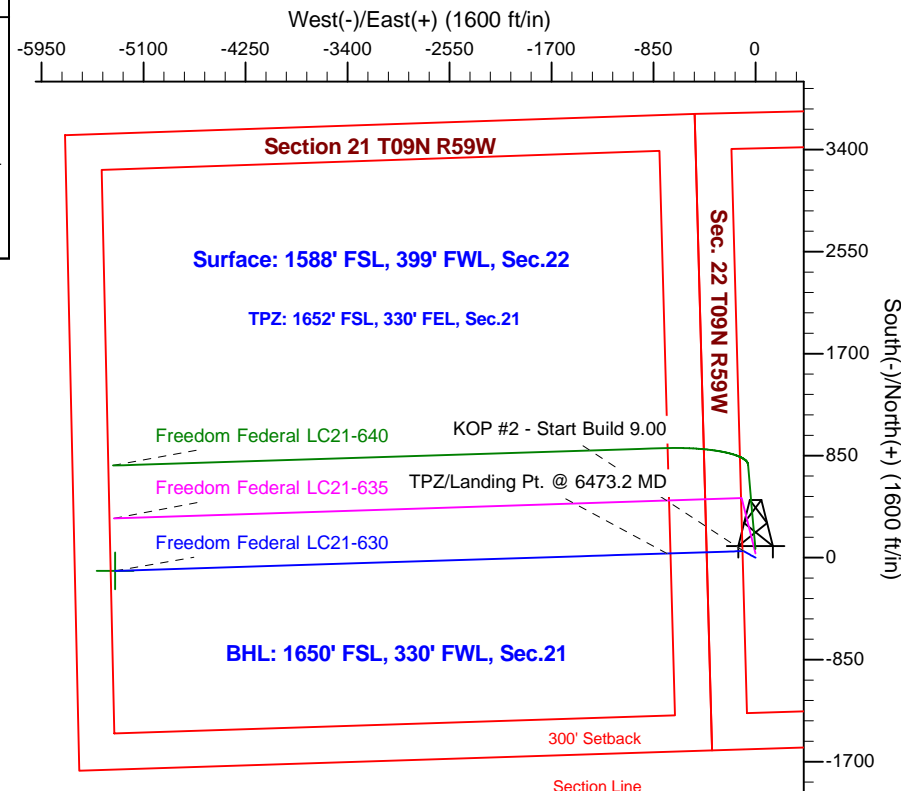
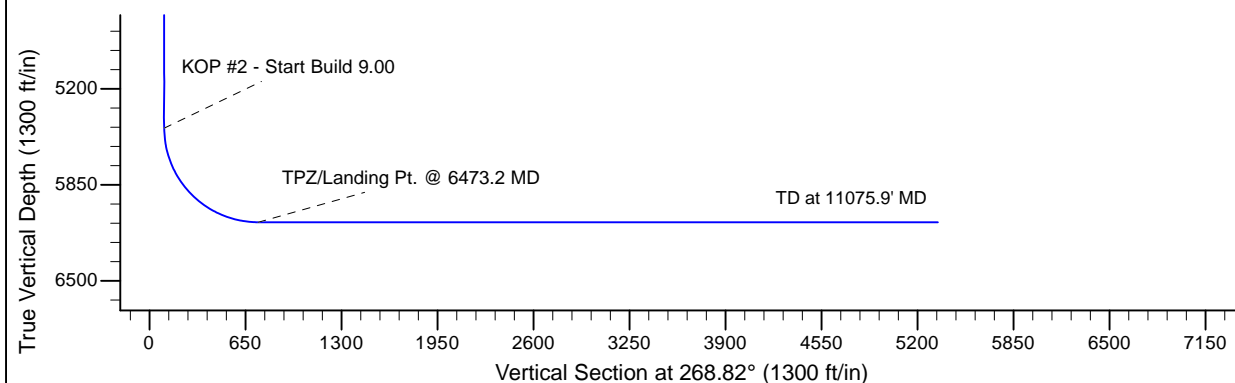
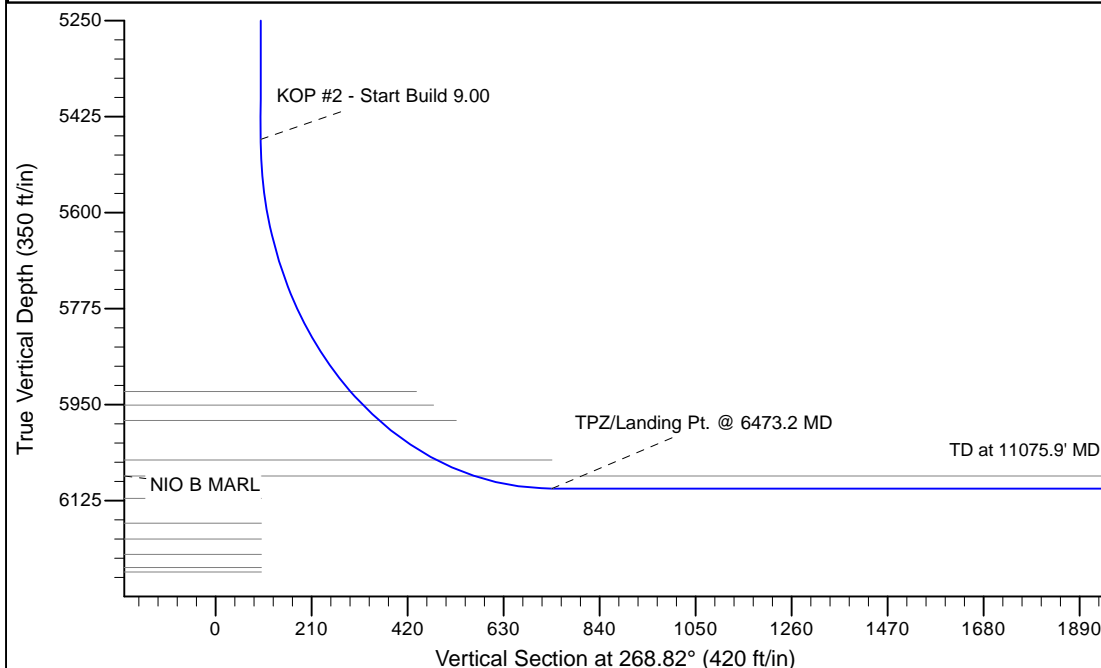
Project: Wattenberg Field
 Site: LC (Sec.22-T09N-R59W) Weld County, CO
 Well: Freedom Federal LC21-630
 Wellbore: Original Drilling
 Design: APD - Rev 1

Northern Region Drilling - Working

Geodetic System: US State Plane 1983
 Datum: North American Datum 1983
 Ellipsoid: GRS 1980
 Zone: Colorado Northern Zone
 System Datum: Mean Sea Level

SECTION DETAILS

Sec	MD	Inc	Azi	TVD	+N/-S	+E/-W	Dleg	TFace	VSec	Target
1	0.0	0.00	0.00	0.0	0.0	0.0	0.00	0.00	0.0	Target
2	2500.0	0.00	0.00	2500.0	0.0	0.0	0.00	0.00	0.0	
3	2912.9	8.26	298.81	2911.4	14.3	-26.0	2.00	298.81	25.7	
4	3293.9	8.26	298.81	3288.6	40.7	-74.0	0.00	0.00	73.1	
5	3706.8	0.00	0.00	3700.0	55.0	-100.0	2.00	180.00	98.8	
6	5473.2	0.00	0.00	5466.4	55.0	-100.0	0.00	0.00	98.8	
7	6473.2	90.00	268.20	6103.0	35.0	-736.3	9.00	268.20	735.4	
8	11075.9	90.00	268.20	6103.0	-109.6	-5336.7	0.00	0.00	5337.8	Freedom Federal LC21-630 BHL 1650'FSL, 330'FWL



WELL DETAILS: Freedom Federal LC21-630				
	Ground Level	4882.0		
0.0	0.0	1513608.25	3423431.57	40.733230
	Northing		Latitude	Longitude
				-103.972070
Plan: APD - Rev 1 (Freedom Federal LC21-630/Original Drilling)				
Created By: Shailey Jewell		Date: 14:59, October 12 2016		
Checked: _____		Date: _____		
Reviewed: _____		Date: _____		
Approved: _____		Date: _____		