

GREAT WESTERN OPERATING COMPANY

POSTLE IC 11-039HN

SW 1/4 NW 1/4, SECTION 11, T3N, R68W, 6th P.M.

WELD COUNTY, COLORADO

1996 Priv. Alum. Cap. #4392, 0.3' Below Ground, in Monument Box in N-S Asphalt Frongate Road Lat: 40.247958° Long: 104.979806°

2012 Priv. Alum. Cap. #28285 0.5' Below Ground, Lat: 40.248022° Long: 104.970303°

1995 Priv. Alum. Cap. #2209 0.8' Below Ground in Gravel Road E-W Lat: 40.248031° Long: 104.960797°

BASIS OF BEARINGS

BASIS OF BEARINGS IS A G.P.S. OBSERVATION

BASIS OF ELEVATION

USGS COOPERATIVE BASE NETWORK CONTROL STATION, DESIGNATION 'VERMILYEA', NGS DATA SHEET LISTS THE NAVD 88 ELEVATION AS BEING 5026 FEET

POSTLE IC 11-039HN

Elev. Graded Ground = 4977.0'

Entry Point

Target Bottom Hole

Section Corners Located. (NAD 83)

LEGEND:

90° SYMBOL

PROPOSED WELLHEAD.

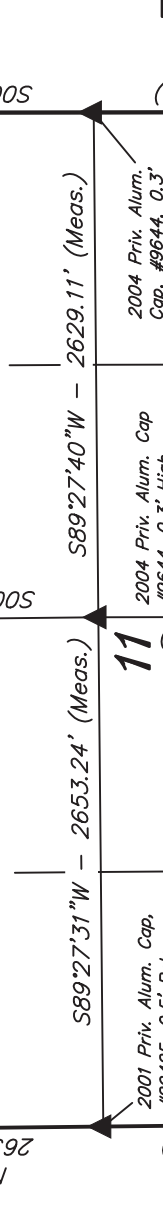
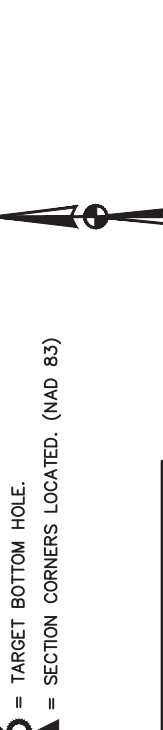
LANDING POINT

TARGET BOTTOM HOLE.

SECTION CORNERS LOCATED. (NAD 83)

LINE TABLE

LINE	DIRECTION	LENGTH
L1	N02°46'49"E	991.28'



CERTIFICATE OF REGISTRATION

THIS IS TO CERTIFY THAT THE ABOVE IS A TRUE AND CORRECT COPY OF THE ORIGINAL RECORD AS FILED IN THE PUBLIC RECORDS OF THE STATE OF COLORADO.

NOTES OF ACTUAL SURVEYS MADE BY ME UNDER MY SURVEYING LICENSE AND THAT THE SAME ARE TRUE AND CORRECT TO THE BEST OF MY KNOWLEDGE AND BELIEF.

REGISTERED LAND SURVEYOR

REGISTRATION NO. 28285

STATE OF COLORADO

DATE: 10-06-16

2001 Priv. Alum. Cap. #29425, 0.5' Below Ground, Lat: 40.240717° Long: 104.979764°

2004 Priv. Alum. Cap. #9644, 0.3' High, Lat: 40.240739° Long: 104.970261°

2004 Priv. Alum. Cap. #9644, 0.3' High in Concrete Slab, Lat: 40.240758° Long: 104.960847°

1995 Priv. Alum. Cap. #22098 1.2' Below Ground in Gravel Road Asphalt Road Lat: 40.233489° Long: 104.960897°

REV: 5 10-06-16 C.C. (SHL CHANGE)

UELS, LLC

Corporate Office * 85 South 200 East

Vernal, UT 84078 * (435) 789-1017

2005 Priv. Alum. Cap. #22098 0.5' Below Ground, in Monument Box at Gravel Road, Lat: 40.233475° Long: 104.979719°

2004 Priv. Alum. Cap. #27269, 0.5' Below Ground, 7' North of E-W Gravel Road, Lat: 40.233483° Long: 104.970308°

2004 Priv. Alum. Cap. #9644, 0.3' High, Lat: 40.240739° Long: 104.970261°

1995 Priv. Alum. Cap. #22098 1.2' Below Ground in Gravel Road Asphalt Road Lat: 40.233489° Long: 104.960897°

SURVEYED BY	JARED CHRISTOPHER	10-04-16	SCALE
DRAWN BY	J.W.	11-21-13	1" = 1000'

WELL LOCATION PLAT

NAD 83 (SURFACE LOCATION)	NAD 83 (ENTRY POINT)	NAD 83 (TARGET BOTTOM HOLE)
LATITUDE = 40°14'38.27" (40.243964)	LATITUDE = 40°14'48.05" (40.246681)	LATITUDE = 40°14'48.26" (40.246739)
LONGITUDE = 104°58'42.05" (104.978347)	LONGITUDE = 104°58'41.35" (104.978153)	LONGITUDE = 104°57'44.96" (104.962489)
NAD 27 (SURFACE LOCATION)	NAD 27 (ENTRY POINT)	NAD 27 (TARGET BOTTOM HOLE)
LATITUDE = 40°14'38.33" (40.243981)	LATITUDE = 40°14'48.10" (40.246694)	LATITUDE = 40°14'48.32" (40.246756)
LONGITUDE = 104°58'40.13" (104.977814)	LONGITUDE = 104°58'39.43" (104.977619)	LONGITUDE = 104°57'43.04" (104.961956)