



Cathedral Energy Services

Bernhardt 60-243

Scale 2":100' - MD

9/14/2016 7:09 PM

Oper. Company: PDC

State: Colorado

Well: Bernhardt 60-243

County: Weld

Field: DJ Basin

Country: USA

Rig: Ensign 124

Location: S6-T4N-R66W

Well ID: 05-123-40493-00

Start Date: 05/12/2015 10:00:00

Job Number: 155178

End Date: 05/21/2015 21:00:00

Latitude: 40.339120

Elev KB: 4726

Longitude: -104.825760

Elev DF: 4726

Elev GL: 4713

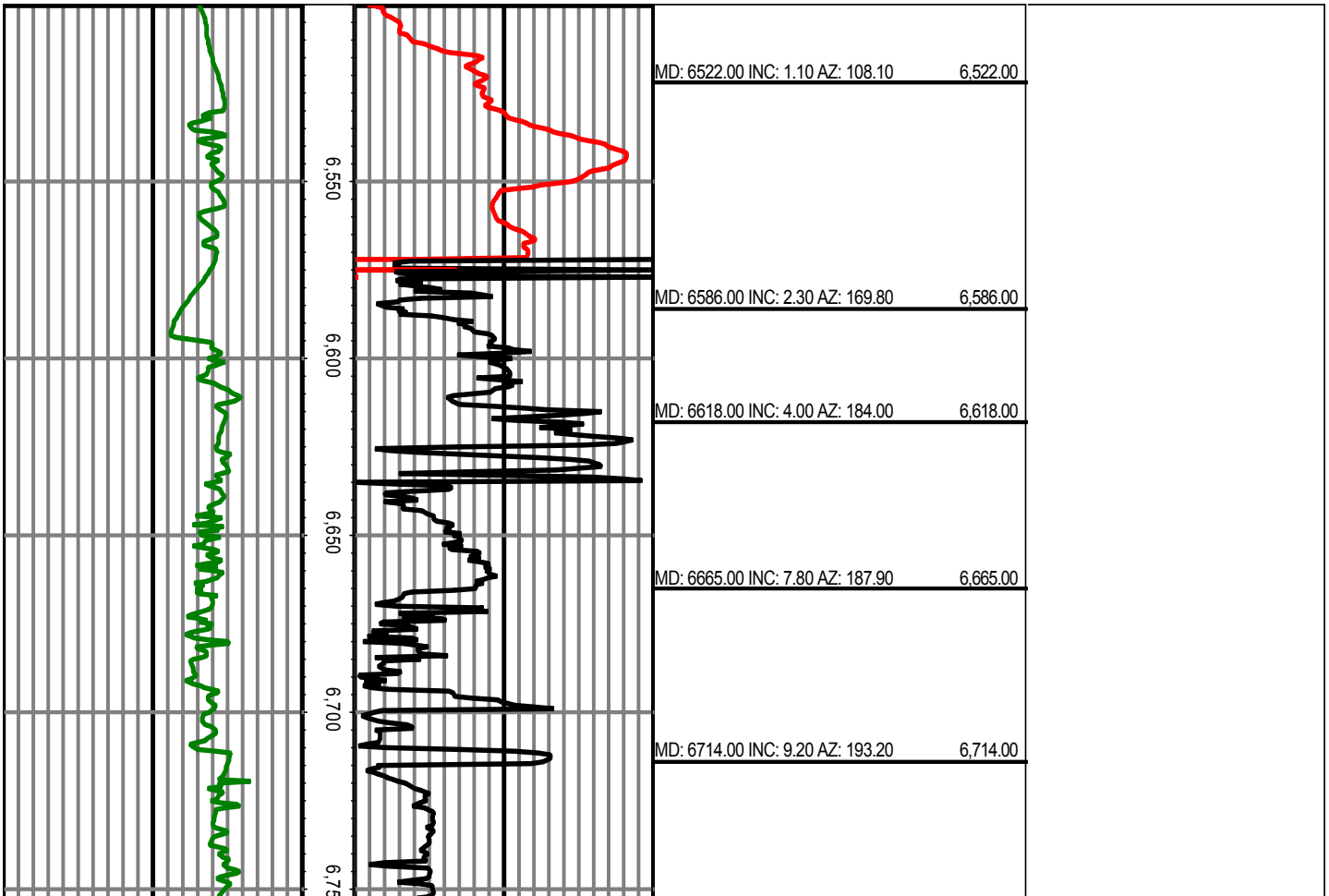
Operator 1: Richie Moulton

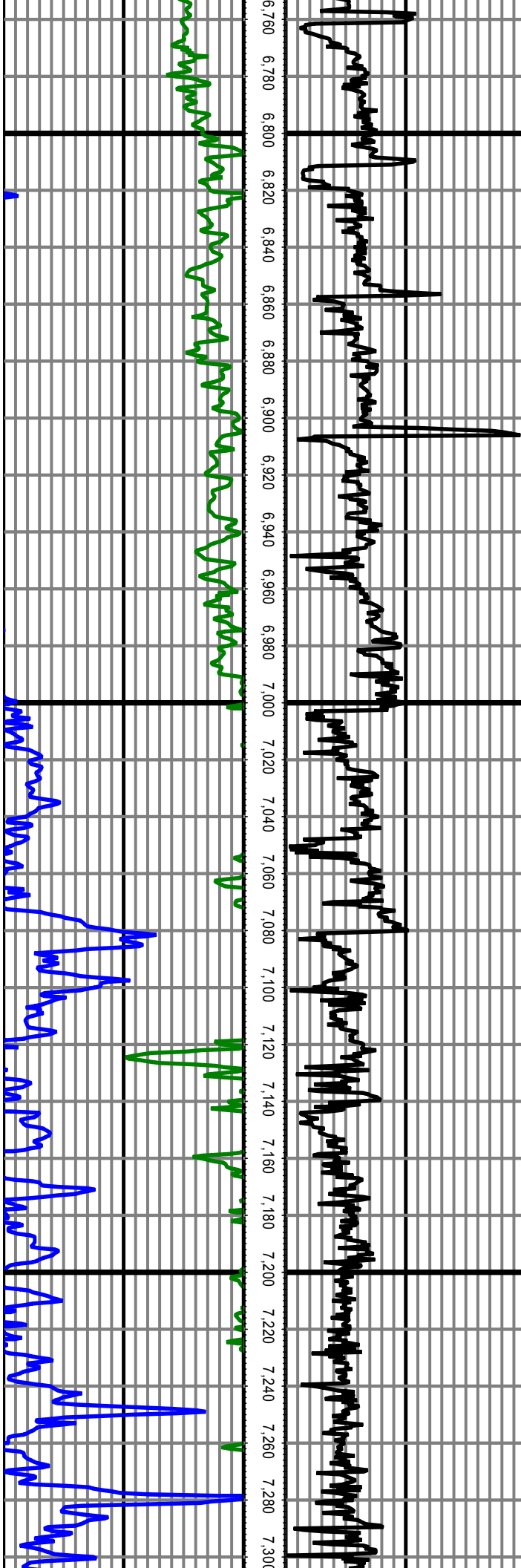
Operator 2: Trevor Kapsch

Hole Data			Casing Data		
Size	From	To	Size	From	To
13.5	0.00	937.00	9.625	0.00	937.00
8.75	937.00	7567.00	7	0.00	7554.00
6.125	7567.00	11830.00		0.00	0.00

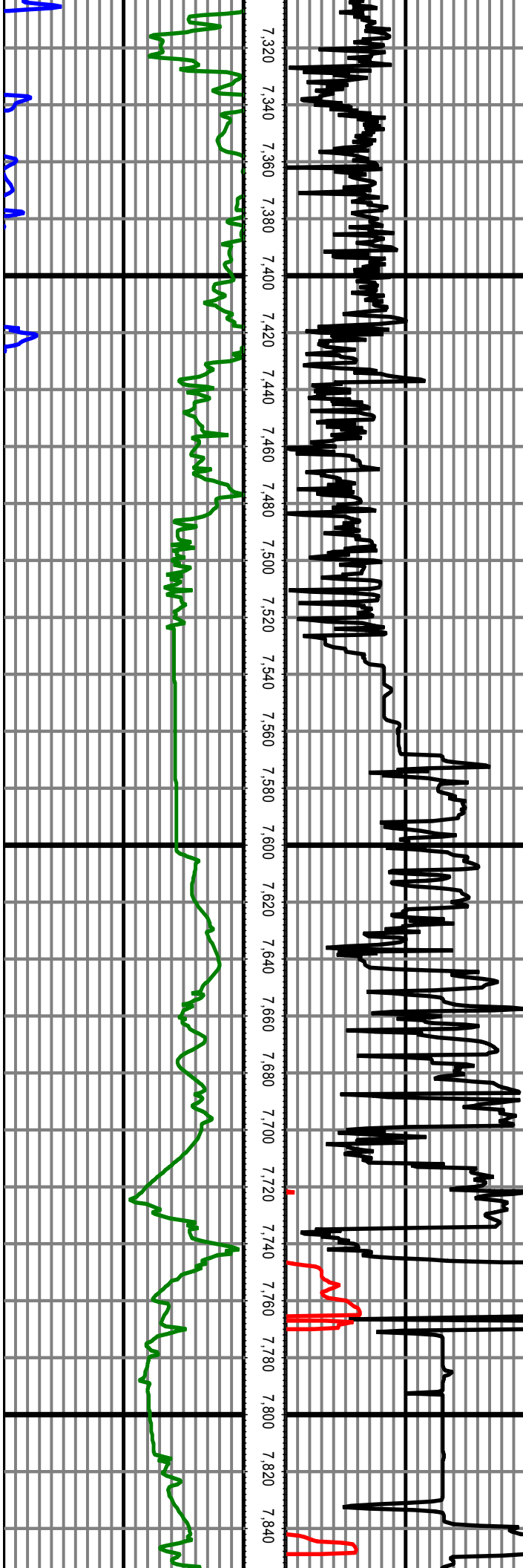
All interpretations are opinions based on inferences from electrical or other measurements and we cannot and do not guarantee the accuracy or correctness of any interpretation, and we shall not except in the case of gross or willful negligence on our part, be liable or responsible for any loss, cost damages or expenses incurred or sustained by anyone resulting from an interpretation made by any of our officers, agents, or employees.

0.00 GR(API) on MD 150.00 MD 0.00 ROP(FT/HR) on MD300.00 Surveys (MD/INC/AZ)
 150.00 2 300.00 FT 300.00 2 600.00





MD: 6761.00 INC: 13.40 AZ: 187.20	6,761.00
MD: 6809.00 INC: 17.30 AZ: 182.60	6,809.00
MD: 6856.00 INC: 21.00 AZ: 186.10	6,856.00
MD: 6905.00 INC: 24.30 AZ: 185.00	6,905.00
MD: 6952.00 INC: 28.10 AZ: 182.80	6,952.00
MD: 7000.00 INC: 32.30 AZ: 180.70	7,000.00
MD: 7047.00 INC: 37.10 AZ: 180.40	7,047.00
MD: 7096.00 INC: 41.80 AZ: 182.10	7,096.00
MD: 7191.00 INC: 52.10 AZ: 182.20	7,191.00
MD: 7286.00 INC: 63.20 AZ: 181.60	7,286.00



MD: 7381.00 INC: 75.10 AZ: 181.60 7,381.00

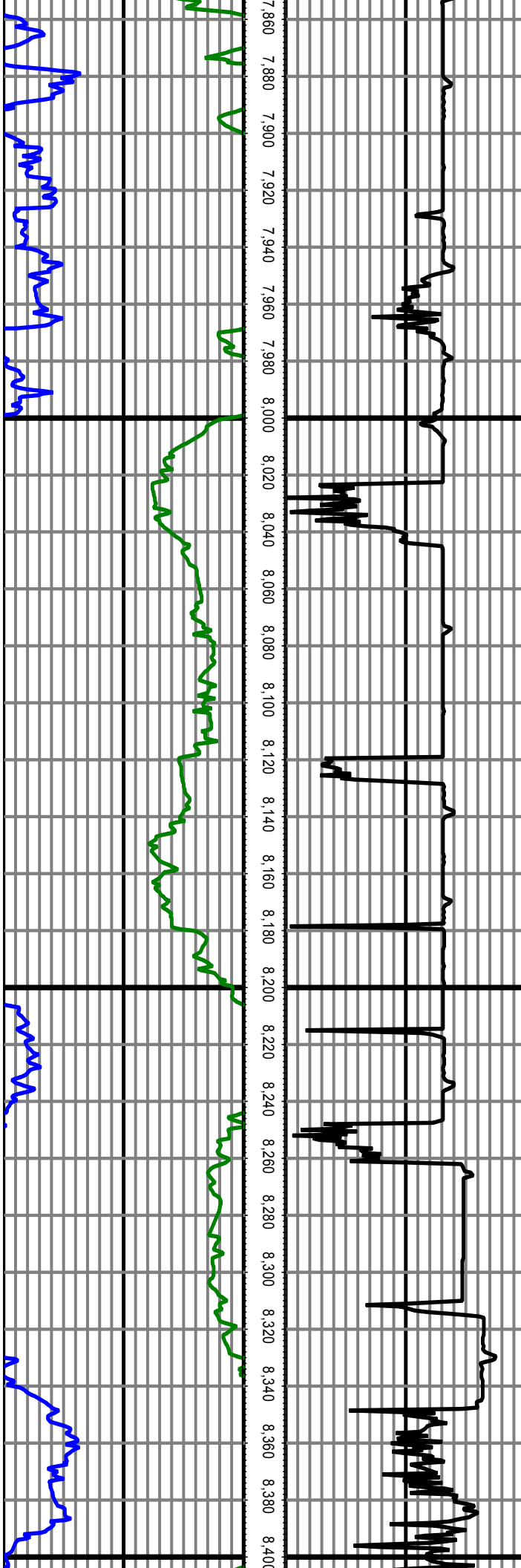
MD: 7477.00 INC: 86.80 AZ: 180.70 7,477.00

MD: 7517.00 INC: 91.20 AZ: 180.00 7,517.00

MD: 7597.00 INC: 91.40 AZ: 181.20 7,597.00

MD: 7682.00 INC: 91.30 AZ: 180.90 7,682.00

MD: 7777.00 INC: 90.00 AZ: 180.70 7,777.00



MD: 7873.00 INC: 90.50 AZ: 181.50 7,873.00

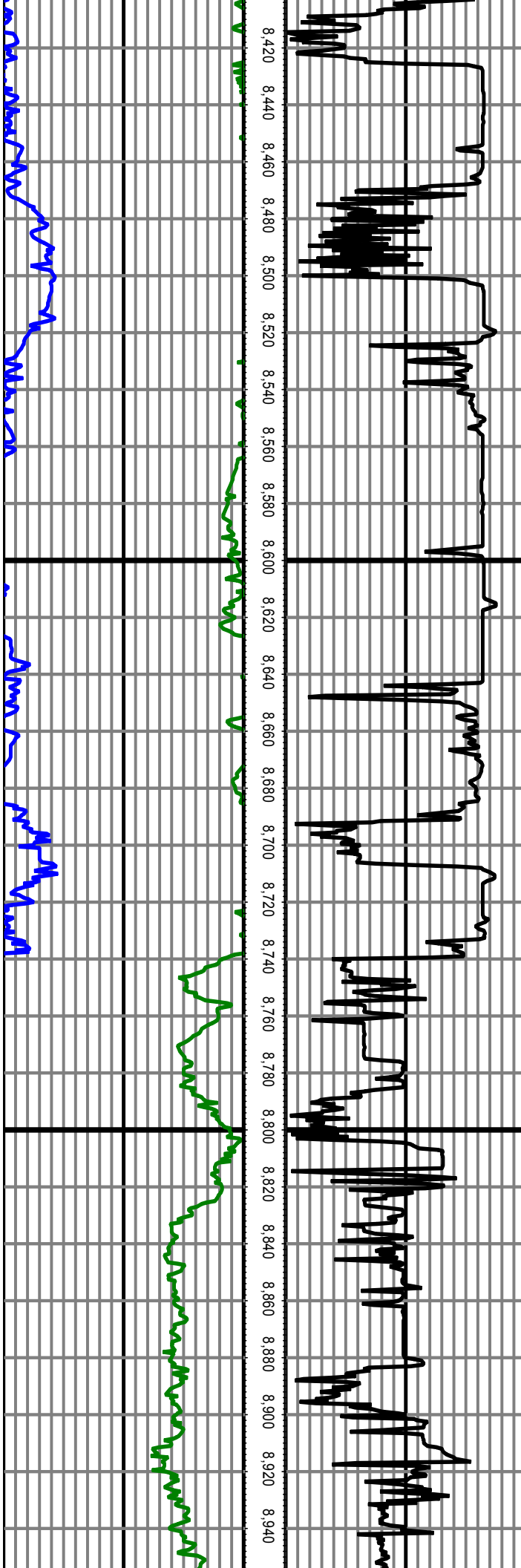
MD: 7968.00 INC: 90.70 AZ: 181.10 7,968.00

MD: 8064.00 INC: 89.50 AZ: 180.30 8,064.00

MD: 8159.00 INC: 90.60 AZ: 177.00 8,159.00

MD: 8255.00 INC: 90.60 AZ: 179.30 8,255.00

MD: 8350.00 INC: 91.10 AZ: 177.10 8,350.00



MD: 8445.00 INC: 89.30 AZ: 180.70 8,445.00

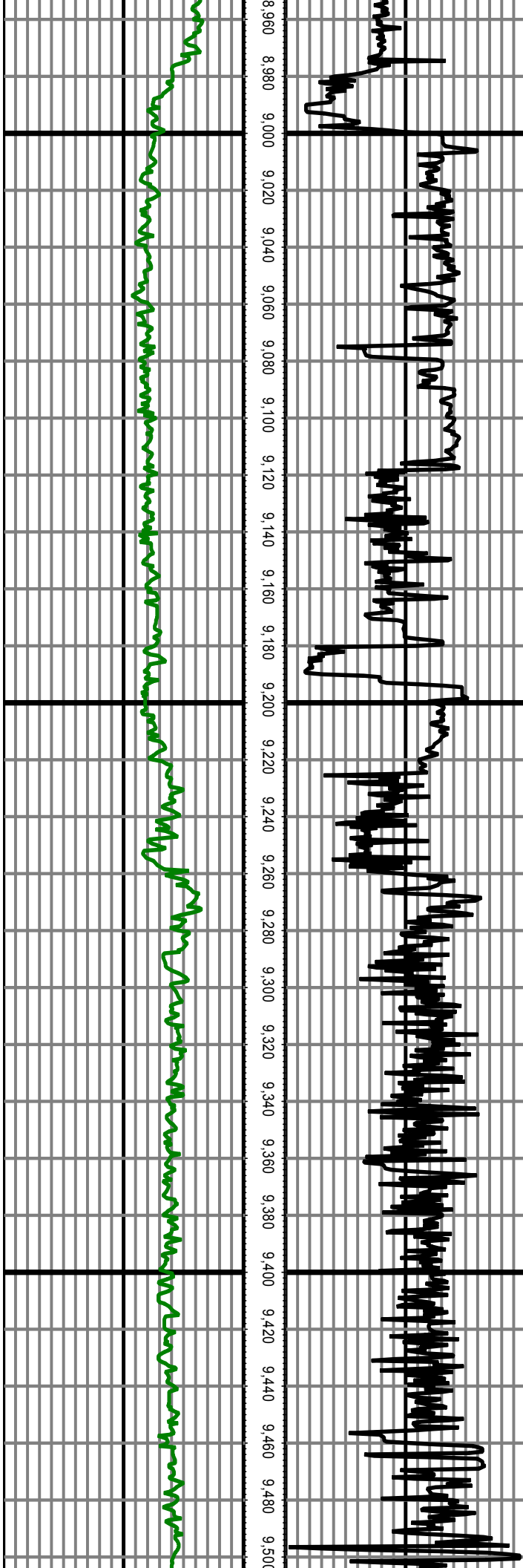
MD: 8541.00 INC: 89.50 AZ: 179.90 8,541.00

MD: 8636.00 INC: 90.40 AZ: 175.90 8,636.00

MD: 8732.00 INC: 90.40 AZ: 178.50 8,732.00

MD: 8827.00 INC: 88.70 AZ: 178.00 8,827.00

MD: 8922.00 INC: 89.30 AZ: 179.00 8,922.00



MD: 9018.00 INC: 90.00 AZ: 184.10 9,018.00

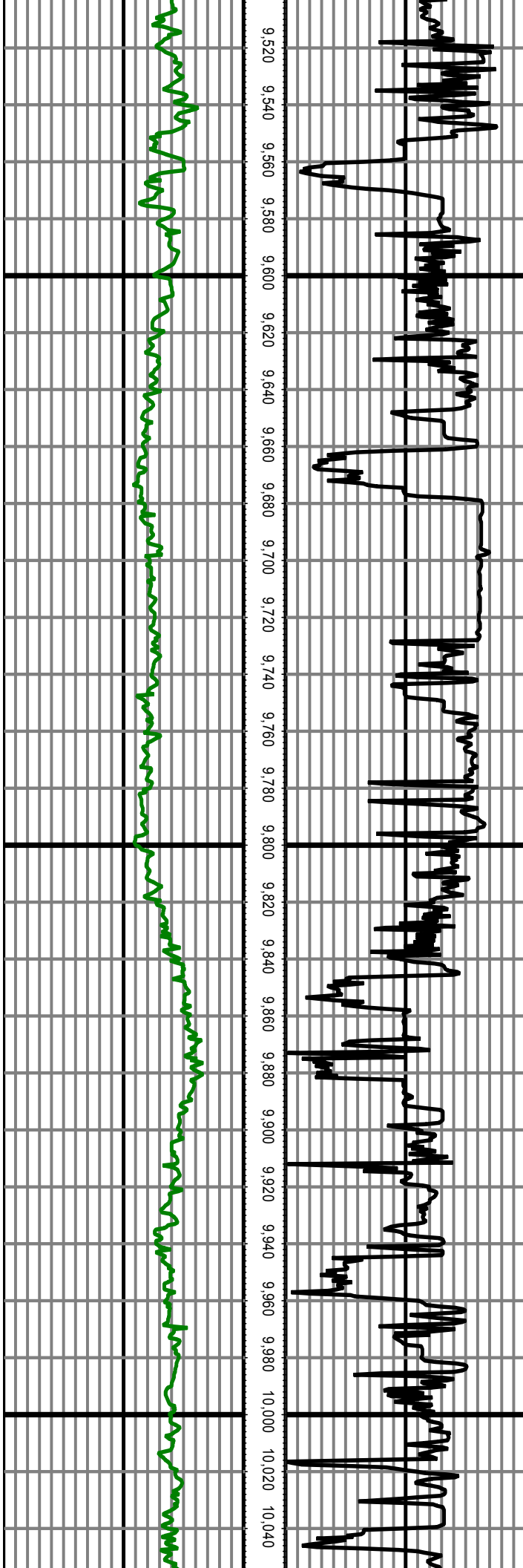
MD: 9113.00 INC: 90.40 AZ: 184.30 9,113.00

MD: 9209.00 INC: 89.30 AZ: 180.70 9,209.00

MD: 9304.00 INC: 89.80 AZ: 179.70 9,304.00

MD: 9399.00 INC: 90.30 AZ: 179.90 9,399.00

MD: 9495.00 INC: 90.70 AZ: 182.60 9,495.00



MD: 9590.00 INC: 90.40 AZ: 183.70 9,590.00

MD: 9685.00 INC: 89.70 AZ: 179.30 9,685.00

MD: 9781.00 INC: 90.50 AZ: 177.10 9,781.00

MD: 9876.00 INC: 91.10 AZ: 177.90 9,876.00

MD: 9971.00 INC: 91.40 AZ: 178.70 9,971.00

MD: 10067.00 INC: 91.50 AZ: 181.40 10,067.00

10,080 10,100 10,120 10,140 10,160 10,180 10,200 10,220 10,240 10,260 10,280 10,300 10,320 10,340 10,360 10,380 10,400 10,420 10,440 10,460 10,480 10,500 10,520 10,540 10,560 10,580

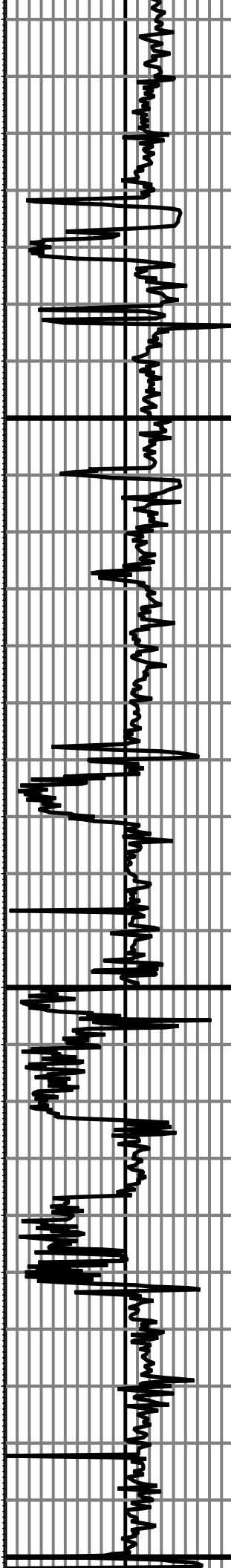
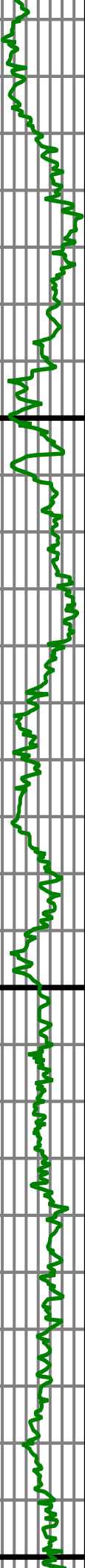
MD: 10162.00 INC: 90.80 AZ: 180.90 10,162.00

MD: 10258.00 INC: 91.30 AZ: 177.40 10,258.00

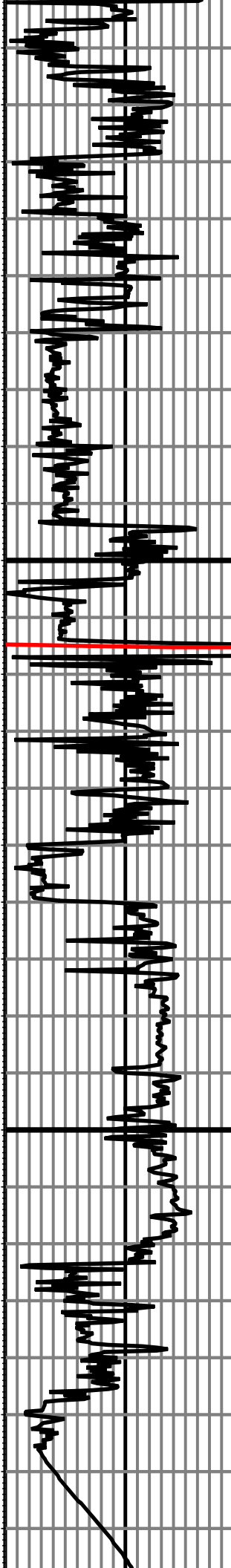
MD: 10353.00 INC: 91.30 AZ: 184.30 10,353.00

MD: 10449.00 INC: 90.10 AZ: 185.20 10,449.00

MD: 10544.00 INC: 90.40 AZ: 182.20 10,544.00



10,620 10,640 10,660 10,680 10,700 10,720 10,740 10,760 10,780 10,800 10,820 10,840 10,860 10,880 10,900 10,920 10,940 10,960 10,980 11,000 11,020 11,040 11,060 11,080 11,100 11,120 11,140



MD: 10640.00 INC: 90.00 AZ: 179.70 10,640.00

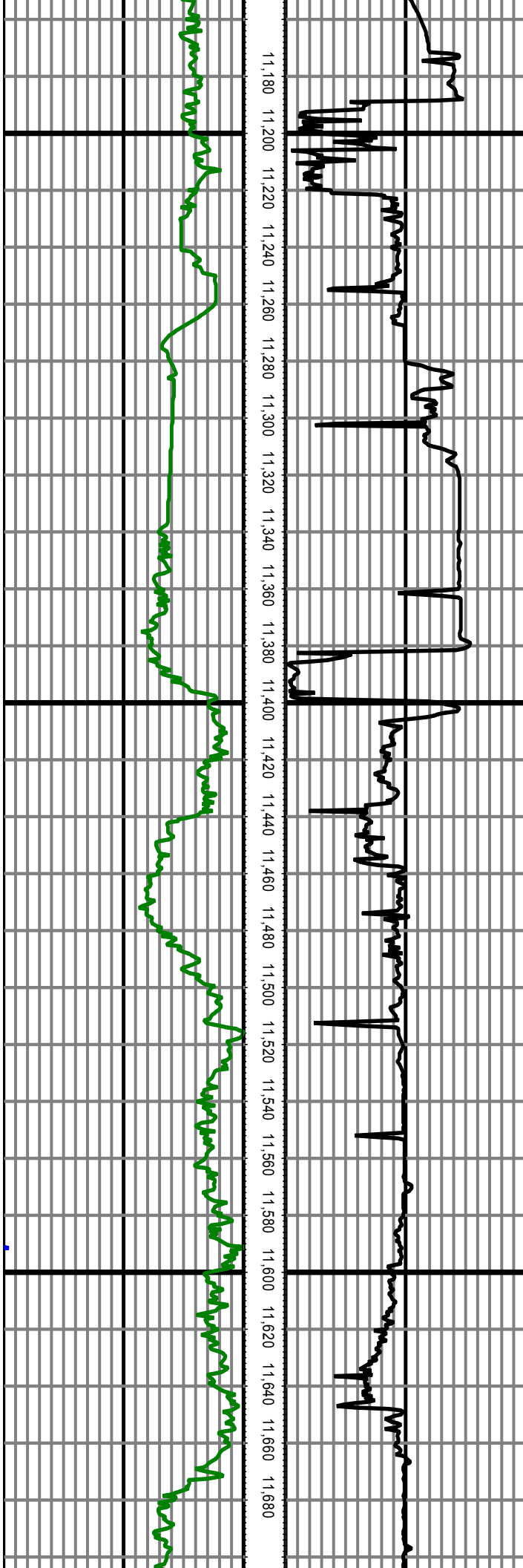
MD: 10735.00 INC: 90.60 AZ: 182.00 10,735.00

MD: 10830.00 INC: 90.00 AZ: 181.80 10,830.00

MD: 10926.00 INC: 89.90 AZ: 177.70 10,926.00

MD: 11022.00 INC: 90.50 AZ: 182.70 11,022.00

MD: 11117.00 INC: 90.80 AZ: 181.40 11,117.00



MD: 11212.00 INC: 90.20 AZ: 173.60 11,212.00

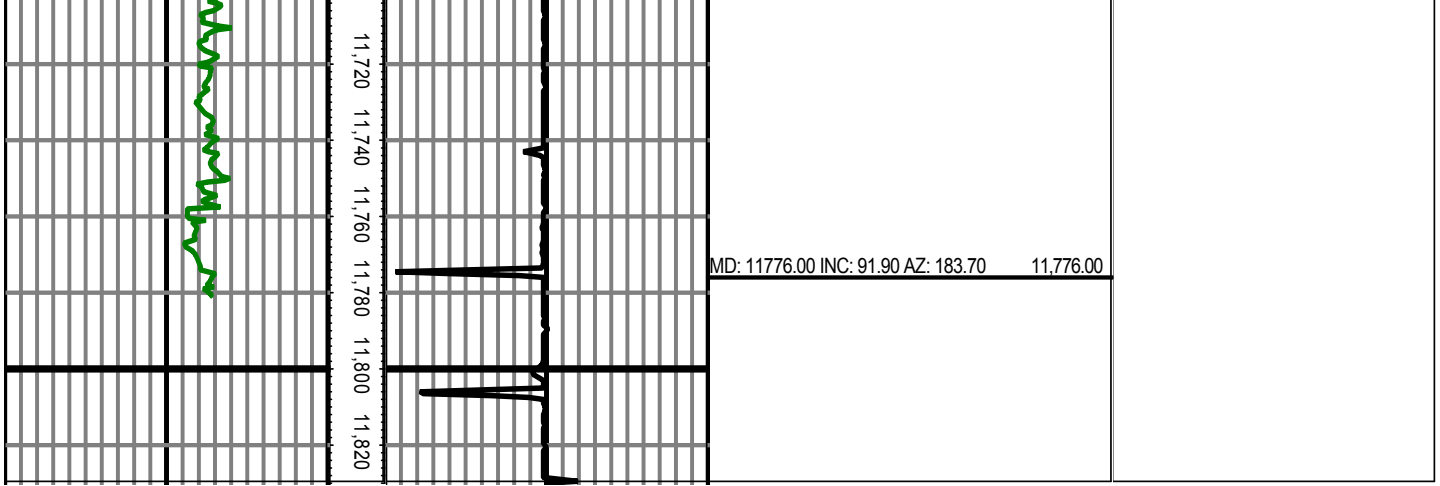
MD: 11308.00 INC: 90.00 AZ: 180.70 11,308.00

MD: 11403.00 INC: 90.10 AZ: 173.40 11,403.00

MD: 11499.00 INC: 91.00 AZ: 172.40 11,499.00

MD: 11594.00 INC: 91.10 AZ: 183.40 11,594.00

MD: 11689.00 INC: 91.80 AZ: 182.50 11,689.00



0.00 GR(API) on MD 150.00
 150.00 2 300.00

MD 0.00 ROP(FT/HR) on MD300.00
 FT 300.00 2 600.00

Surveys (MD/INC/AZ)