



Cathedral Energy Services

Bernhardt 60-243
Scale 5":100' - TVD
9/14/2016 7:10 PM

Oper. Company: PDC
Well: Bernhardt 60-243
Field: DJ Basin
Rig: Ensign 124
Well ID: 05-123-40493-00
Job Number: 155178

State: Colorado
County: Weld
Country: USA
Location: S6-T4N-R66W
Start Date: 05/12/2015 10:00:00
End Date: 05/21/2015 21:00:00

Latitude: 40.339120
Longitude: -104.825760

Elev KB: 4726
Elev DF: 4726
Elev GL: 4713

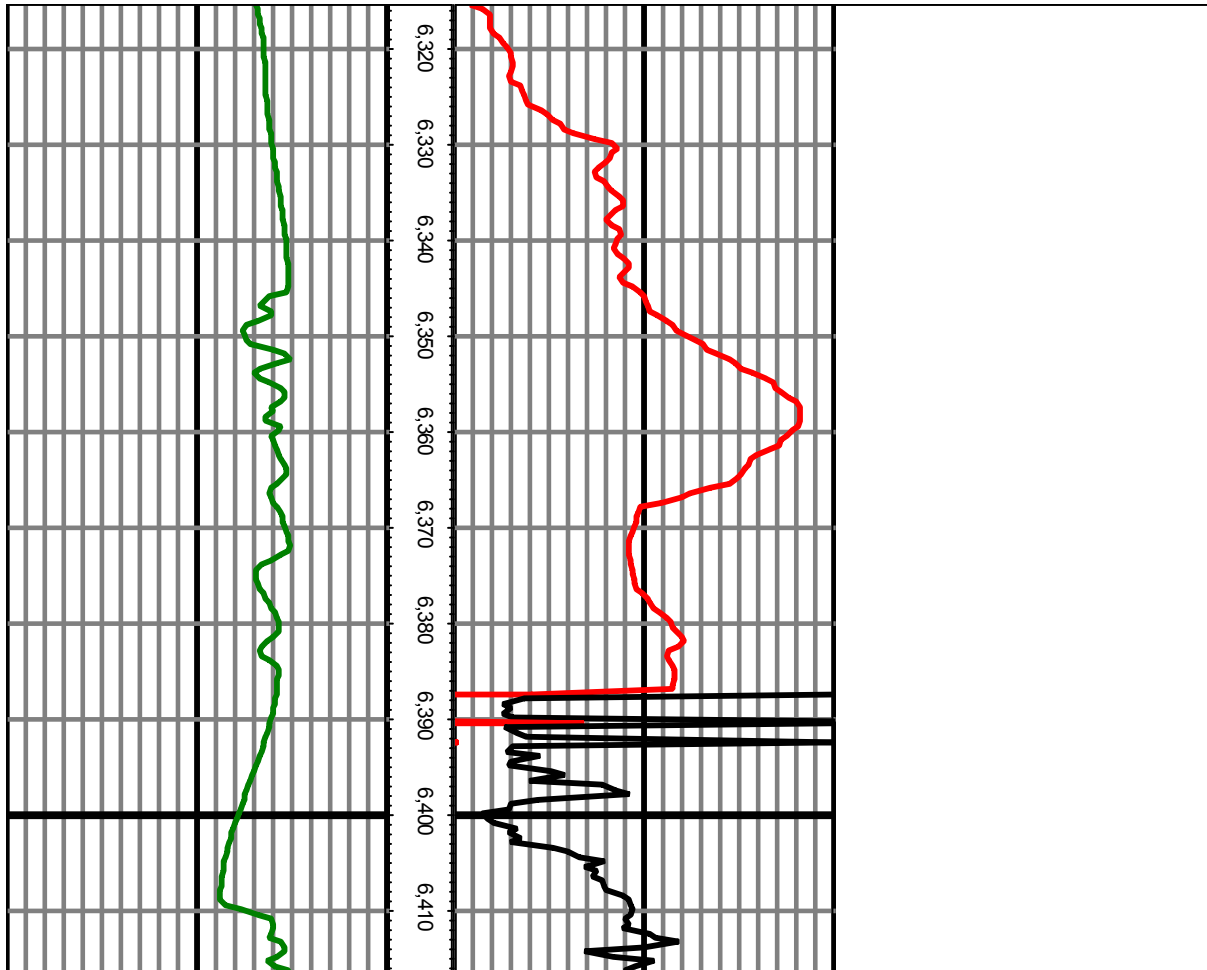
Operator 1: Richie Moulton

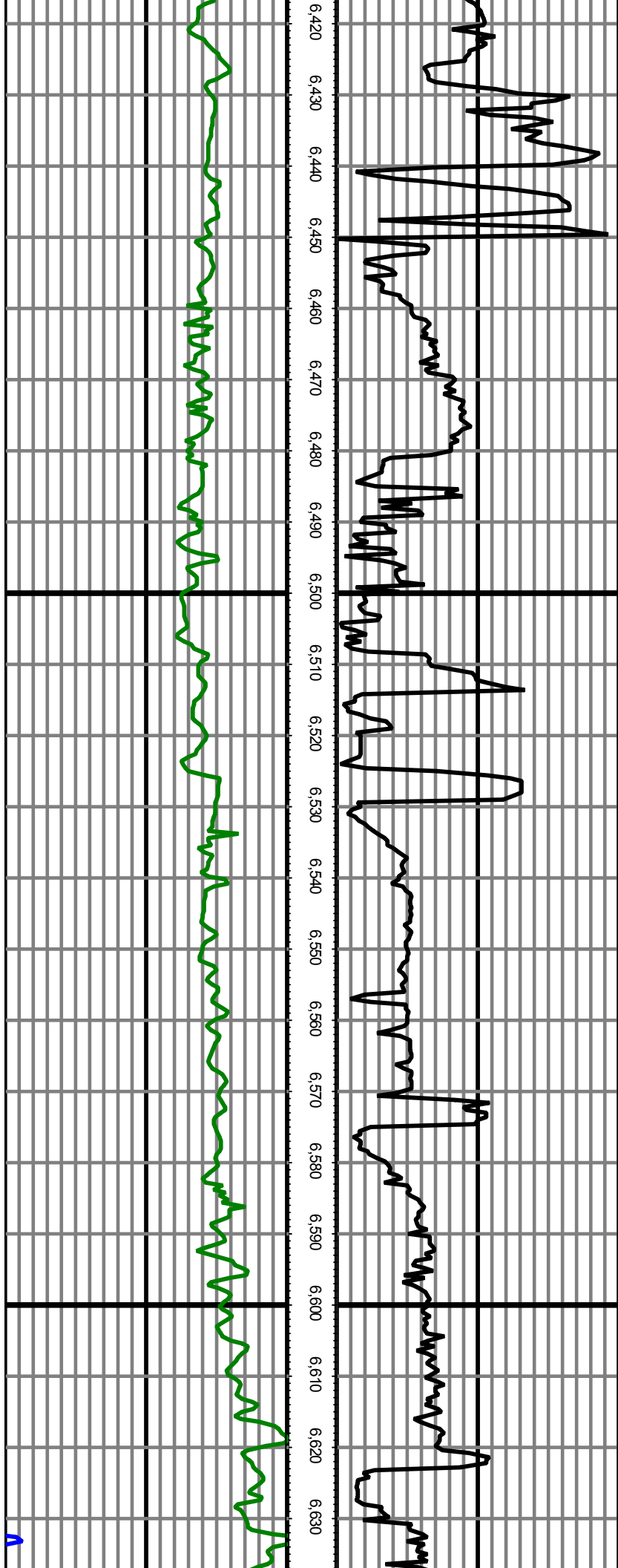
Operator 2: Trevor Kapsch

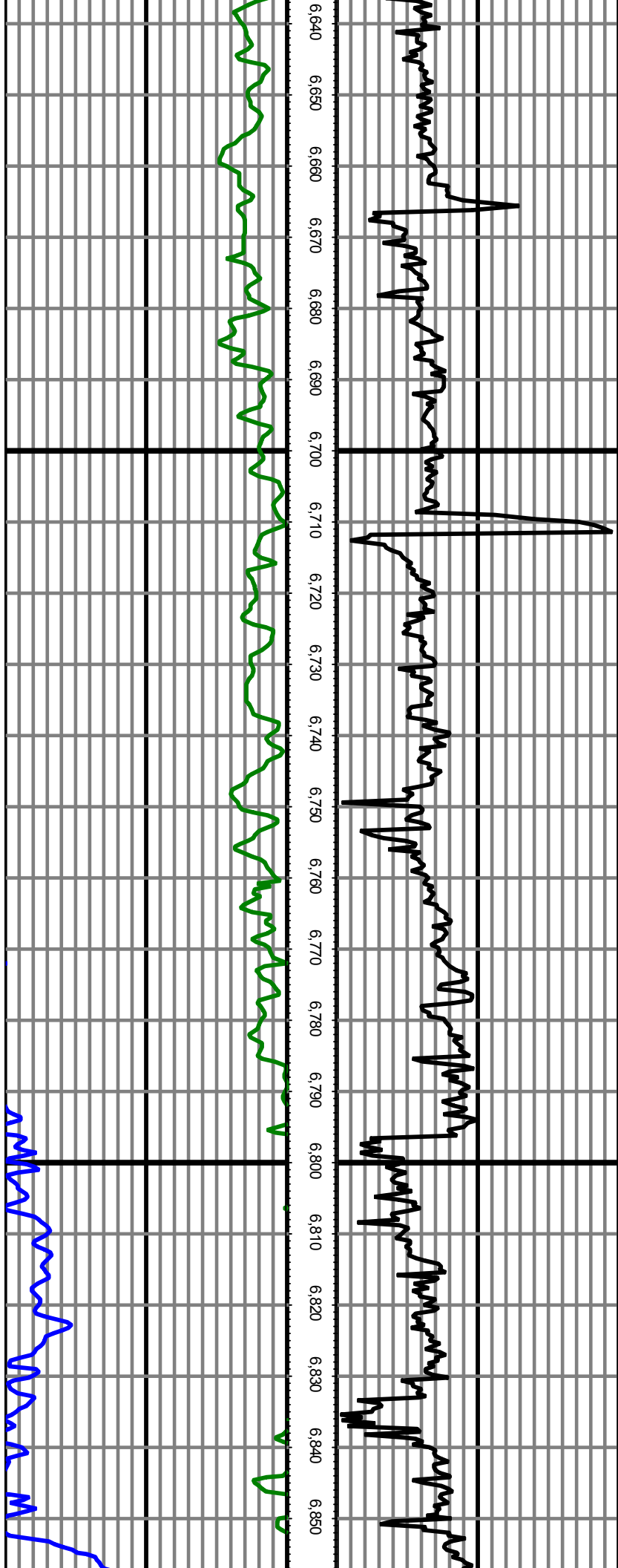
Hole Data			Casing Data		
Size	From	To	Size	From	To
13.5	0.00	937.00	9.625	0.00	937.00
8.75	937.00	7567.00	7	0.00	7554.00
6.125	7567.00	11830.00		0.00	0.00

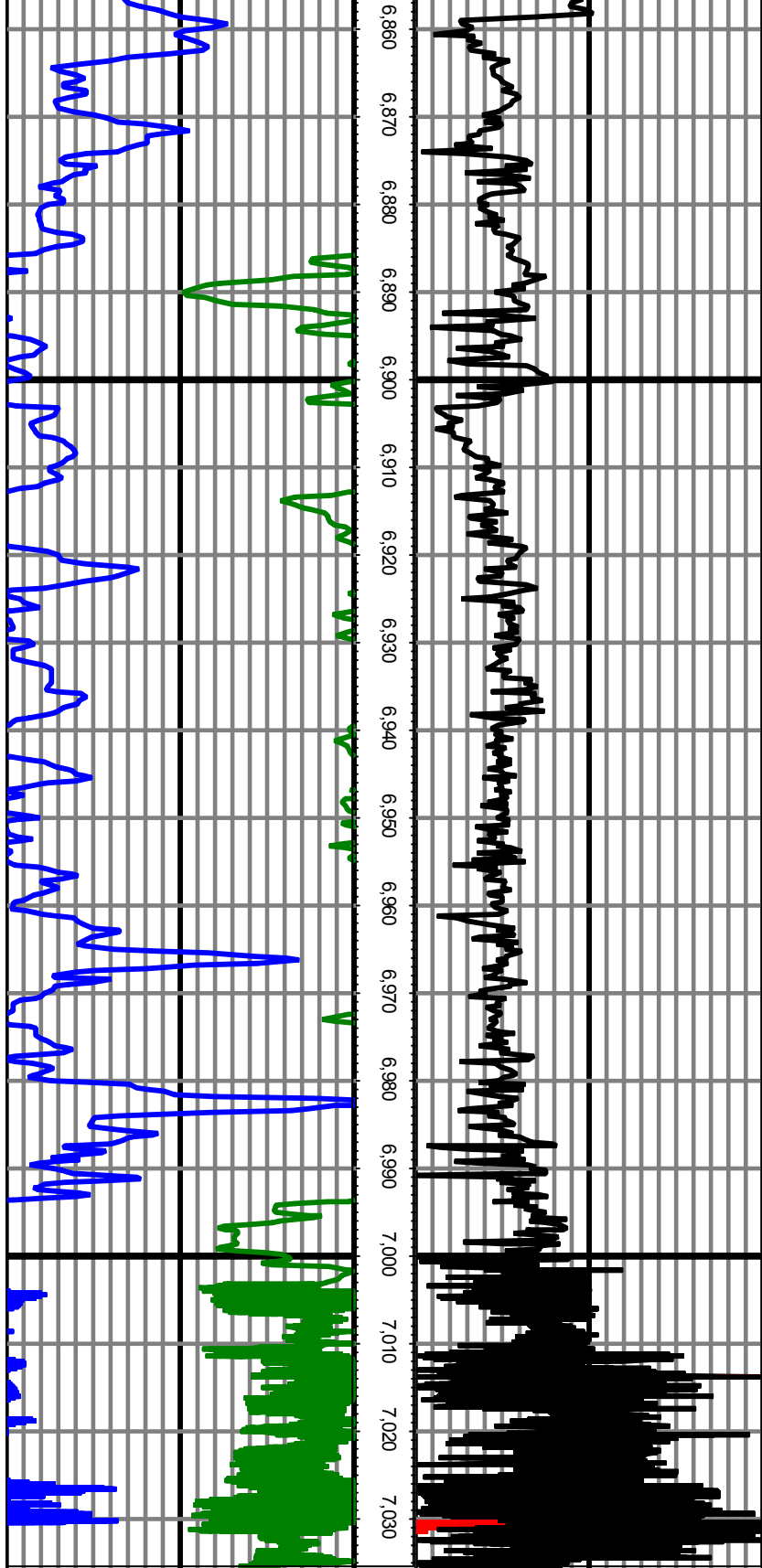
All interpretations are opinions based on inferences from electrical or other measurements and we cannot and do not guarantee the accuracy or correctness of any interpretation, and we shall not except in the case of gross or willful negligence on our part, be liable or responsible for any loss, cost damages or expenses incurred or sustained by anyone resulting from an interpretation made by any of our officers, agents, or employees.

0.00 GR(API) on TVD 150.00 TVD 0.00 ROP(FT/HR) on TVD 300.00
 150.00 2 300.00 FT 300.00 2 600.00









0.00 GR(API) on TVD 150.00 TVD 0.00 ROP(FT/HR) on TVD 300.00
150.00 2 300.00 FT 300.00 2 600.00