

T10N, R58W, 6th P.M.

LEGEND:

- └─ = 90° SYMBOL
- = PROPOSED WELLHEAD.
- = TARGET BOTTOM HOLE.
- ▲ = SECTION CORNERS LOCATED.

2012 Alum. Cap,
#28285, 0.1' High
Lat: 40.816942°
Long: 103.832336°

2010 Alum. Cap,
0.3' High, Fence Corner
Lat: 40.816975°
Long: 103.822819°

2010 Alum. Cap,
Flush W/Ground
Lat: 40.816906°
Long: 103.841850°

N89°43'12"E - 2634.39' (Meas.)

N89°43'12"E - 2634.39' (Meas.)

N00°55'36"W - 2648.12' (Meas.)

S01°13'45"E - 2661.92' (Meas.)

NOTE:
THE PROPOSED TARGET BOTTOM HOLE FOR
THIS WELL IS LOCATED IN THE SE 1/4 SE
1/4 OF SECTION 35, T10N, R58W, 6th P.M.
AT 600' FSL 1320' FEL. IT BEARS
S02°15'58"W 7143.63' FROM THE PROPOSED
WELLHEAD.

2012 Alum. Cap,
#28285,
Flush W/Ground,
Lat: 40.809642°
Long: 103.841694°

N00°55'36"W - 2648.12' (Meas.)

26

RAZOR FED #261-3545
Elev. Graded Ground = 4712.1'

Top of Production
Approx 2553 FSL 1176 FEL
Hand Drawn 9-21-16

2012 Alum. Cap,
#28285, 0.1' High
Lat: 40.809672°
Long: 103.822617°

2010 Alum. Cap,
Flush W/Ground
E/W Fence
Lat: 40.802375°
Long: 103.841542°

N89°59'08"W - 2648.64' (Meas.)

N89°59'08"W - 2648.64' (Meas.)

2012 Alum. Cap,
Flush W/Ground
Lat: 40.802372°
Long: 103.831975°

S02°15'58"W 7143.63'

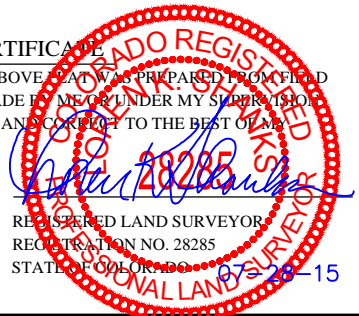
S01°13'45"E - 2661.92' (Meas.)

2010 Alum. Cap,
Flush W/Ground
Fence Corner
Lat: 40.802369°
Long: 103.822411°

Target
Bottom Hole

CERTIFICATE

THIS IS TO CERTIFY THAT THE ABOVE PLAT WAS PREPARED FROM FIELD NOTES OF ACTUAL SURVEYS MADE BY ME OR UNDER MY SUPERVISION AND THAT THE SAME ARE TRUE AND CORRECT TO THE BEST OF MY KNOWLEDGE AND BELIEF.



PDOP = 1.3

NAD 83 (SURFACE LOCATION)	
LATITUDE = 40°48'32.38" (40.808994)	
LONGITUDE = 103°49'32.95" (103.825819)	
NAD 27 (SURFACE LOCATION)	
LATITUDE = 40°48'32.43" (40.809008)	
LONGITUDE = 103°49'31.14" (103.825317)	



BASIS OF BEARINGS
BASIS OF BEARINGS IS A G.P.S. OBSERVATION

BASIS OF ELEVATION

SPOT ELEVATION LOCATED AT THE NORTHEAST CORNER OF SECTION 15, T9N, R58W, 6th P.M. TAKEN FROM THE GATEHOOK SPRING, QUADRANGLE, COLORADO, WELD COUNTY, 7.5 MINUTE QUAD (TOPOGRAPHIC MAP) PUBLISHED BY THE UNITED STATES DEPARTMENT OF THE INTERIOR, GEOLOGICAL SURVEY. SAID ELEVATION IS MARKED AS BEING 4679 FEET.

WHITING OIL & GAS CORP.

RAZOR FED #261-3545 (SURFACE LOCATION)
NE 1/4 SE 1/4, SECTION 26, T10N, R58W, 6th P.M.
WELD COUNTY, COLORADO

SURVEYED BY: JARED CHRISTOPHER, D.W.	DATE: 06-15-15
DRAWN BY: K.B.	DATE DRAWN: 07-08-15
SCALE: 1" = 1000'	REVISED: 07-28-15 M.D.
WELL LOCATION PLAT	



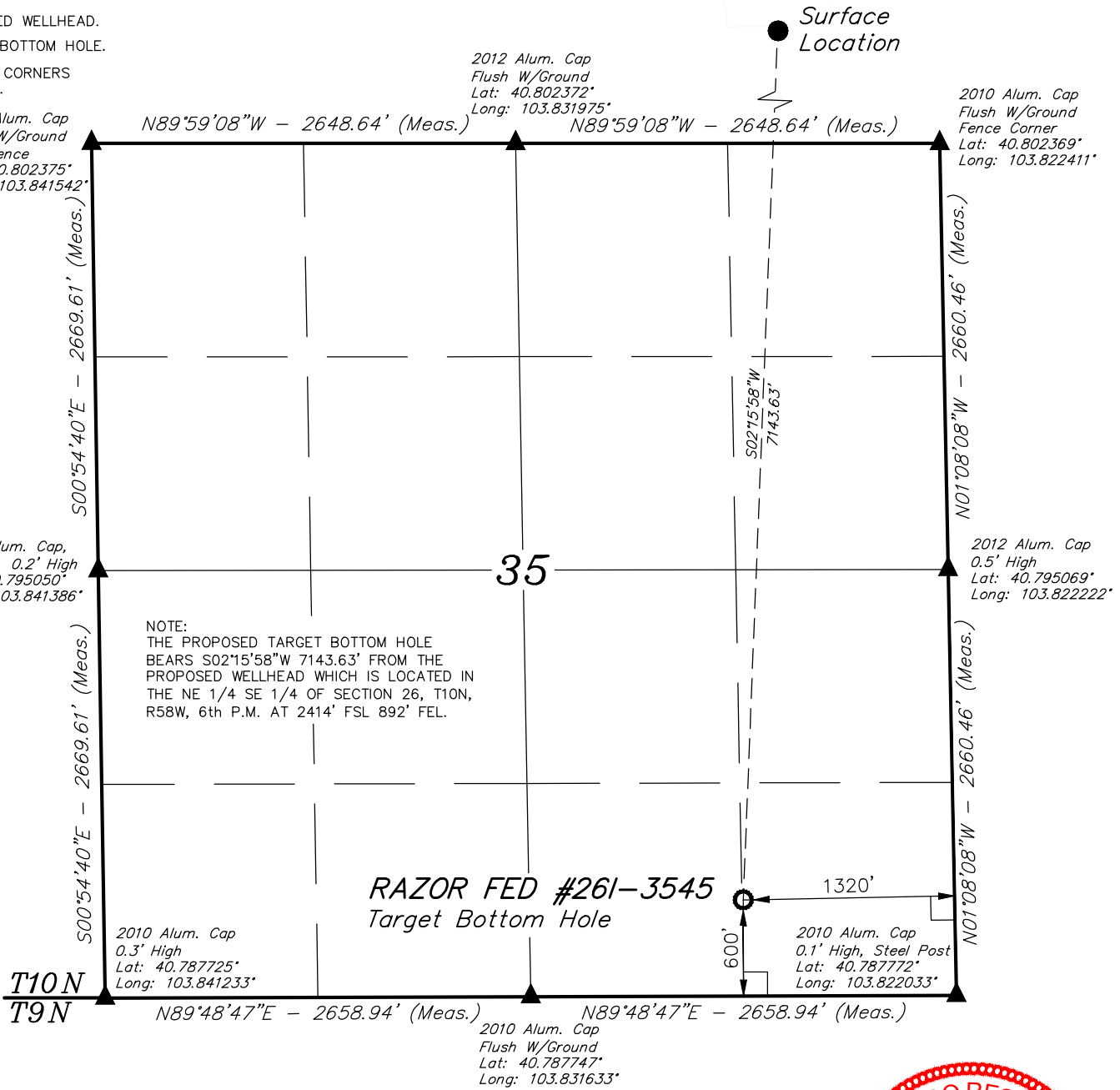
UELS, LLC
Corporate Office * 85 South 200 East
Vernal, UT 84078 * (435) 789-1017



T10N, R58W, 6th P.M.

LEGEND:

- └─ = 90° SYMBOL
- = PROPOSED WELLHEAD.
- = TARGET BOTTOM HOLE.
- ▲ = SECTION CORNERS LOCATED.



NAD 83 (TARGET BOTTOM HOLE)
LATITUDE = 40°47'21.86" (40.789406)
LONGITUDE = 103°49'36.64" (103.826844)
NAD 27 (TARGET BOTTOM HOLE)
LATITUDE = 40°47'21.91" (40.789419)
LONGITUDE = 103°49'34.83" (103.826342)



CERTIFICATE

THIS IS TO CERTIFY THAT THE ABOVE PLAT WAS PREPARED FROM FIELD NOTES OF ACTUAL SURVEYS MADE BY ME OR UNDER MY SUPERVISION, AND THAT THE SAME ARE TRUE AND CORRECT TO THE BEST OF MY KNOWLEDGE AND BELIEF.



BASIS OF BEARINGS
BASIS OF BEARINGS IS A G.P.S. OBSERVATION

BASIS OF ELEVATION
SPOT ELEVATION LOCATED AT THE NORTHEAST CORNER OF SECTION 15, T9N, R58W, 6th P.M. TAKEN FROM THE GATEHOOK SPRING, QUADRANGLE, COLORADO, WELD COUNTY, 7.5 MINUTE QUAD (TOPOGRAPHIC MAP) PUBLISHED BY THE UNITED STATES DEPARTMENT OF THE INTERIOR, GEOLOGICAL SURVEY. SAID ELEVATION IS MARKED AS BEING 4679 FEET.

WHITING OIL & GAS CORP.

RAZOR FED #261-3545 (TARGET BOTTOM HOLE)
SE 1/4 SE 1/4, SECTION 35, T10N, R58W, 6th P.M.
WELD COUNTY, COLORADO

SURVEYED BY: JARED CHRISTOPHER, D.W.	DATE: 06-15-15
DRAWN BY: K.B.	DATE DRAWN: 07-08-15
SCALE: 1" = 1000'	REVISED: 07-28-15 M.D.



UELS, LLC
Corporate Office * 85 South 200 East
Vernal, UT 84078 * (435) 789-1017



WELL LOCATION PLAT