

LEGEND:

- = 90° SYMBOL
 = PROPOSED WELLHEAD.
 = TARGET BOTTOM HOLE.
 = SECTION CORNERS LOCATED.

T10N, R58W, 6th P.M.

Target
Bottom Hole

2012 Alum. Cap,
#28285, 0.1' High
Lat: 40.816942°
Long: 103.832336°

2010 Alum. Cap,
0.3' High, Fence Corner
Lat: 40.816975°
Long: 103.822819°

2010 Alum. Cap,
Flush W/Ground
Lat: 40.816906°
Long: 103.841850°

N89°43'12"E - 2634.39' (Meas.)

N89°43'12"E - 2634.39' (Meas.)

N00°55'36"W - 2648.12' (Meas.)

NOTE:
THE PROPOSED TARGET BOTTOM HOLE FOR
THIS WELL IS LOCATED IN THE NE 1/4 NE
1/4 OF SECTION 23, T10N, R58W, 6th P.M.
AT 100' FNL 990' FEL. IT BEARS
N02°07'32"W 8207.49' FROM THE PROPOSED
WELLHEAD.

Top of Production
Approx 2553 FNL 1097 FEL
Hand Drawn 9-21-16

N02°07'32"W
8207.49'

S01°13'45"E - 2661.92' (Meas.)

2012 Alum. Cap,
#28285, 0.1' High
Lat: 40.809672°
Long: 103.822617°

2012 Alum. Cap,
#28285,
Flush W/Ground,
Lat: 40.809642°
Long: 103.841694°

N00°55'36"W - 2648.12' (Meas.)

26

RAZOR #261-2346

Elev. Graded Ground = 4711.1'

794'

2324'

2012 Alum. Cap,
Flush W/Ground
Lat: 40.802372°
Long: 103.831975°

2010 Alum. Cap,
Flush W/Ground
Fence Corner
Lat: 40.802369°
Long: 103.822411°

2010 Alum. Cap,
Flush W/Ground
E/W Fence
Lat: 40.802375°
Long: 103.841542°

N89°59'08"W - 2648.64' (Meas.)

N89°59'08"W - 2648.64' (Meas.)

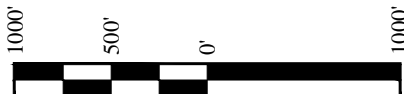
PDOP = 1.3

NAD 83 (SURFACE LOCATION)

LATITUDE = 40°48'31.49" (40.808747)
LONGITUDE = 103°49'31.65" (103.825458)

NAD 27 (SURFACE LOCATION)

LATITUDE = 40°48'31.54" (40.808761)
LONGITUDE = 103°49'29.84" (103.824956)



CERTIFICATE

THIS IS TO CERTIFY THAT THE ABOVE PLAT WAS PREPARED FROM FIELD
NOTES OF ACTUAL SURVEYS MADE BY ME OR UNDER MY SUPERVISION
AND THAT THE SAME ARE TRUE AND CORRECT TO THE BEST OF MY
KNOWLEDGE AND BELIEF.

REGISTERED LAND SURVEYOR
REGISTRATION NO. 28285
STATE OF COLORADO

87-28-15

BASIS OF BEARINGS

BASIS OF BEARINGS IS A G.P.S. OBSERVATION

BASIS OF ELEVATION

SPOT ELEVATION LOCATED AT THE NORTHEAST CORNER OF SECTION 15, T9N,
R58W, 6th P.M. TAKEN FROM THE GATEHOOK SPRING, QUADRANGLE,
COLORADO, WELD COUNTY, 7.5 MINUTE QUAD (TOPOGRAPHIC MAP) PUBLISHED
BY THE UNITED STATES DEPARTMENT OF THE INTERIOR, GEOLOGICAL SURVEY.
SAID ELEVATION IS MARKED AS BEING 4679 FEET.



WHITING OIL & GAS CORP.

RAZOR #261-2346 (SURFACE LOCATION)
NE 1/4 SE 1/4, SECTION 26, T10N, R58W, 6th P.M.
WELD COUNTY, COLORADO

SURVEYED BY: JARED CHRISTOPHER, D.W.	DATE: 06-15-15
DRAWN BY: K.B.	DATE DRAWN: 07-08-15
SCALE: 1" = 1000'	REVISED: 07-28-15 M.D.
WELL LOCATION PLAT	

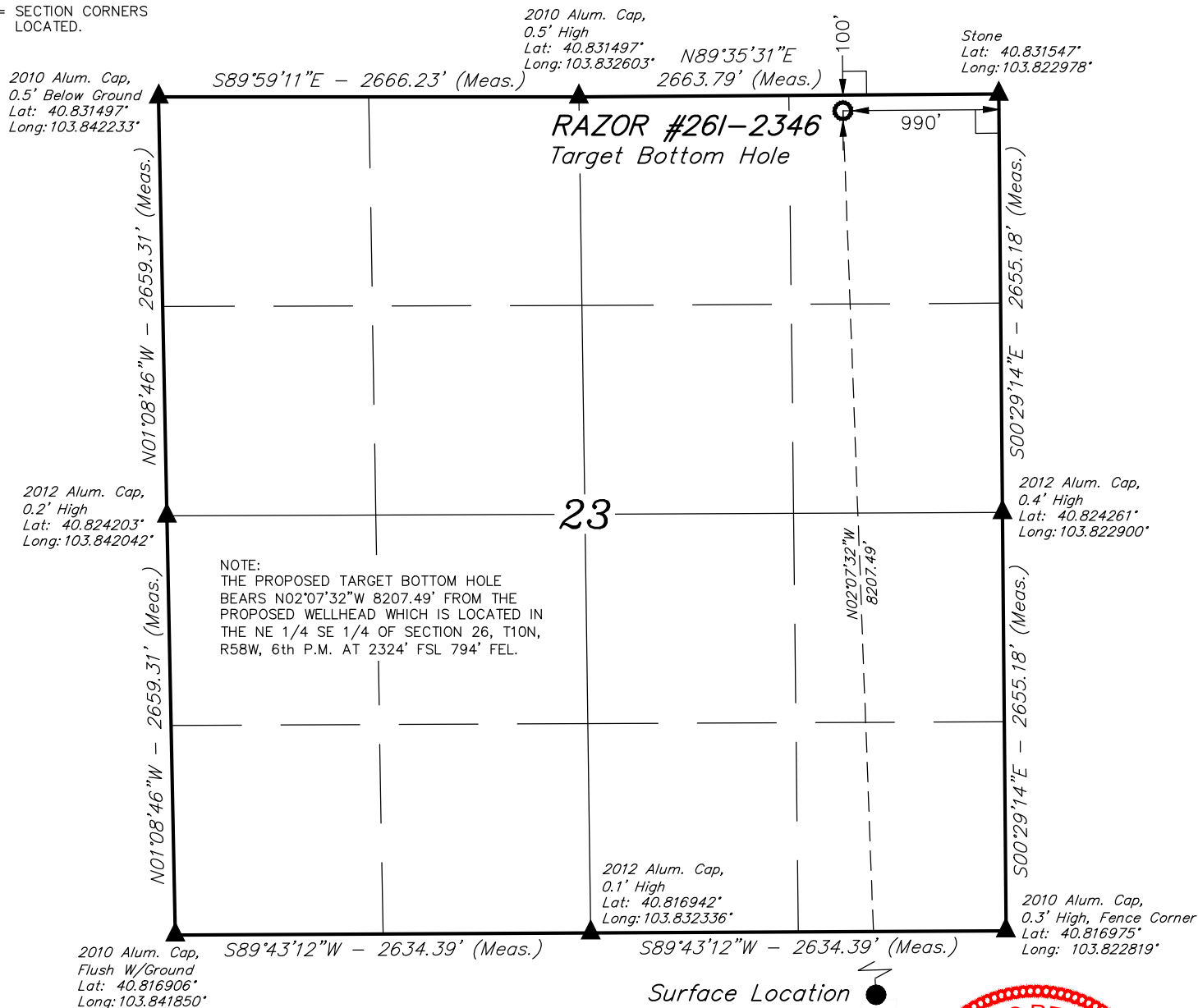


UELS, LLC
Corporate Office * 85 South 200 East
Vernal, UT 84078 * (435) 789-1017

LEGEND:

- = 90° SYMBOL
 = PROPOSED WELLHEAD.
 = TARGET BOTTOM HOLE.
 = SECTION CORNERS LOCATED.

T10N, R58W, 6th P.M.



NAD 83 (TARGET BOTTOM HOLE)
LATITUDE = 40°49'52.51" (40.831253)
LONGITUDE = 103°49'35.59" (103.826553)
NAD 27 (TARGET BOTTOM HOLE)
LATITUDE = 40°49'52.56" (40.831267)
LONGITUDE = 103°49'33.78" (103.826050)



CERTIFICATE
 THIS IS TO CERTIFY THAT THE ABOVE PLAT WAS PREPARED FROM FIELD NOTES OF ACTUAL SURVEYS MADE BY ME OR UNDER MY SUPERVISION, AND THAT THE SAME ARE TRUE AND CORRECT TO THE BEST OF MY KNOWLEDGE AND BELIEF.

REGISTERED LAND SURVEYOR
 REGISTRATION NO. 28285
 STATE OF COLORADO

BASIS OF BEARINGS
 BASIS OF BEARINGS IS A G.P.S. OBSERVATION

BASIS OF ELEVATION

SPOT ELEVATION LOCATED AT THE NORTHEAST CORNER OF SECTION 15, T9N, R58W, 6th P.M. TAKEN FROM THE GATEHOOK SPRING, QUADRANGLE, COLORADO, WELD COUNTY, 7.5 MINUTE QUAD (TOPOGRAPHIC MAP) PUBLISHED BY THE UNITED STATES DEPARTMENT OF THE INTERIOR, GEOLOGICAL SURVEY. SAID ELEVATION IS MARKED AS BEING 4679 FEET.

WHITING OIL & GAS CORP.

RAZOR #26I-2346 (TARGET BOTTOM HOLE)
 NE 1/4 NE 1/4, SECTION 23, T10N, R58W, 6th P.M.
 WELD COUNTY, COLORADO

SURVEYED BY: JARED CHRISTOPHER, D.W.	DATE: 06-15-15
DRAWN BY: K.B.	DATE DRAWN: 07-08-15
SCALE: 1" = 1000'	REVISED: 07-28-15 M.D.

WELL LOCATION PLAT

UELS, LLC
 Corporate Office * 85 South 200 East
 Vernal, UT 84078 * (435) 789-1017

