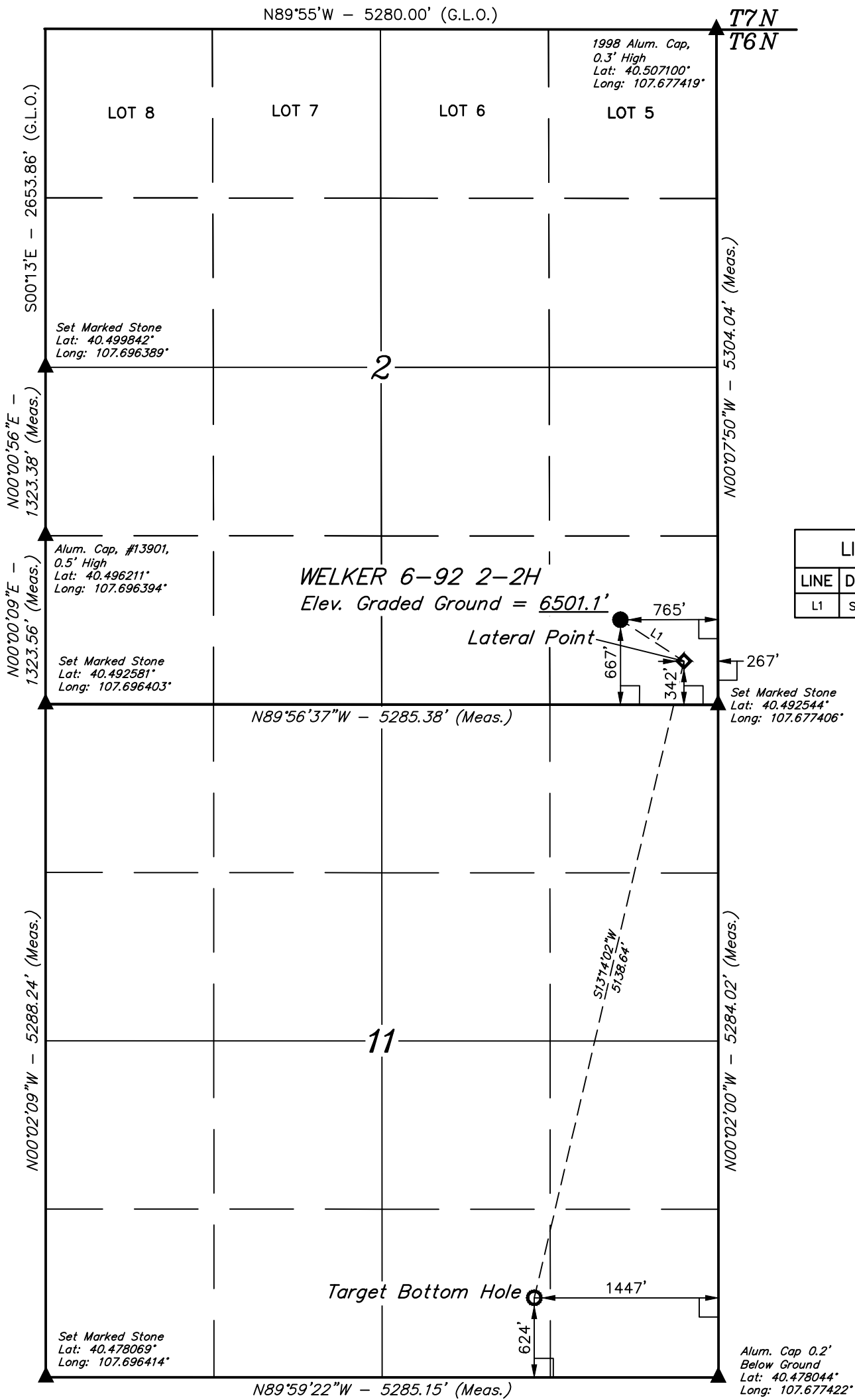


LEGEND:

- └─ = 90° SYMBOL
● = PROPOSED WELLHEAD.
○ = TARGET BOTTOM HOLE.
◇ = LATERAL POINT
▲ = SECTION CORNERS LOCATED. (NAD 83)

T6N, R92W, 6th P.M.



LINE TABLE		
LINE	DIRECTION	LENGTH
L1	S56°52'27"E	595.87'

PDOP = 2.5



NAD 83 (TARGET BOTTOM HOLE)	NAD 83 (LATERAL POINT)	NAD 83 (SURFACE LOCATION)
LATITUDE = 40°28'47.15" (40.479764)	LATITUDE = 40°29'36.55" (40.493486)	LATITUDE = 40°29'39.77" (40.494381)
LONGITUDE = 107°40'57.43" (107.682619)	LONGITUDE = 107°40'42.11" (107.678364)	LONGITUDE = 107°40'48.56" (107.680156)
NAD 27 (TARGET BOTTOM HOLE)	NAD 27 (LATERAL POINT)	NAD 27 (SURFACE LOCATION)
LATITUDE = 40°28'47.26" (40.479794)	LATITUDE = 40°29'36.65" (40.493514)	LATITUDE = 40°29'39.88" (40.494411)
LONGITUDE = 107°40'55.18" (107.681994)	LONGITUDE = 107°40'39.86" (107.677739)	LONGITUDE = 107°40'46.31" (107.679531)
STATE PLANE NAD 83 (CO. NORTH)	STATE PLANE NAD 83 (CO. NORTH)	STATE PLANE NAD 83 (CO. NORTH)
N: 1425090.55 E: 2392894.74	N: 1430058.73 E: 2394200.60	N: 1430397.14 E: 2393710.40
STATE PLANE NAD 27 (CO. NORTH)	STATE PLANE NAD 27 (CO. NORTH)	STATE PLANE NAD 27 (CO. NORTH)
N: 425089.49 E: 1393052.63	N: 430057.66 E: 1394358.49	N: 430396.07 E: 1393868.29

CERTIFICATE
THIS IS TO CERTIFY THAT THE ABOVE PLAT WAS PREPARED FROM FIELD NOTES OF ACTUAL SURVEYS MADE BY ME OR UNDER MY SUPERVISION, AND THAT THE SAME ARE TRUE AND CORRECT TO THE BEST OF MY KNOWLEDGE AND BELIEF.

REGISTERED LAND SURVEYOR
REGISTRATION NO. 38130
STATE OF COLORADO 08-17-16

REV: 1 08-17-16 C.D.L. (ADD PROPERTY NUMBER)

BASIS OF BEARINGS
BASIS OF BEARINGS IS A G.P.S. OBSERVATION

BASIS OF ELEVATION
SPOT ELEVATION LOCATED AT THE NORTHEAST CORNER OF SECTION 10, T6N, R93W, 6th P.M., TAKEN FROM THE THE HORSE GULCH, QUADRANGLE, COLORADO, MOFFAT COUNTY, 7.5 MINUTE QUAD. (TOPOGRAPHIC MAP) PUBLISHED BY THE UNITED STATES DEPARTMENT OF THE INTERIOR, GEOLOGICAL SURVEY. SAID ELEVATION IS MARKED AS BEING 6246 FEET.



UELS, LLC
Corporate Office * 85 South 200 East
Vernal, UT 84078 * (435) 789-1017



SWN PRODUCTION COMPANY, LLC

WELKER 6-92 2-2H
SE 1/4 SE 1/4, SECTION 2, T6N, R92W, 6th P.M.
MOFFAT COUNTY, COLORADO

SURVEYED BY: GLENN MCELROY, E.M.	DATE: 11-18-14
DRAWN BY: C.D.L.	DATE DRAWN: 09-01-15
SCALE: 1" = 1000'	

WELL LOCATION PLAT