

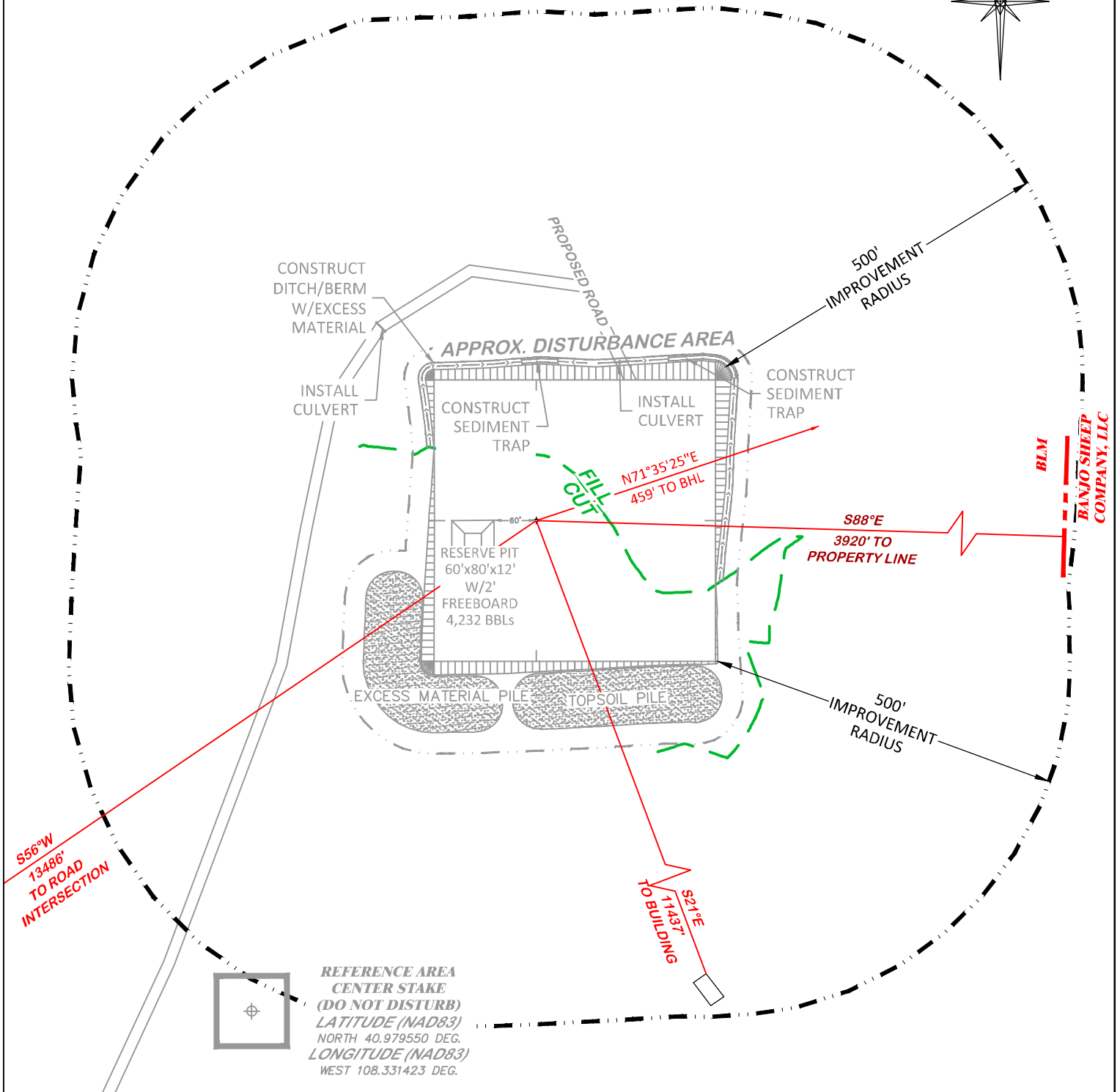
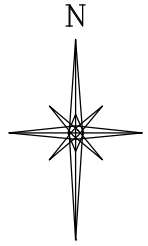
UNGRADED ELEVATION: 6781.3'

FINAL ELEVATION: 6778.4'

PROPOSED AREA OF DISTURBANCE: 6.8± ACRES

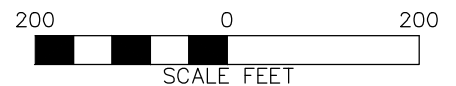
DRAINS TO POWDER WASH

## LOCATION DRAWING



BEFORE DIGGING  
CALL FOR  
UTILITY LINE LOCATION

POWDER WASH 19-1



RIFFIN & ASSOCIATES, INC.

(307) 362-5028

1414 ELK ST., ROCK SPRINGS, WY 82901

DRAWN: 10/30/2015 - TCM

SCALE: 1" = 200'

REVISED: 12/2/2015 - TCM

DRG JOB No. 20958

MOVED SHL & PIT

EXHIBIT 2D

### LOCATION DRAWING

QEP ENERGY COMPANY

POWDER WASH 19-1

SESE, SECTION 19, T. 12 N., R. 97 W., 6th P.M.,  
MOFFAT COUNTY, COLORADO

**QEP ENERGY COMPANY**

POWDER WASH 19-1

SESE, SECTION 19, T12N, R97W, 6th PM

DATE: 12/2/2015

[illegible]