

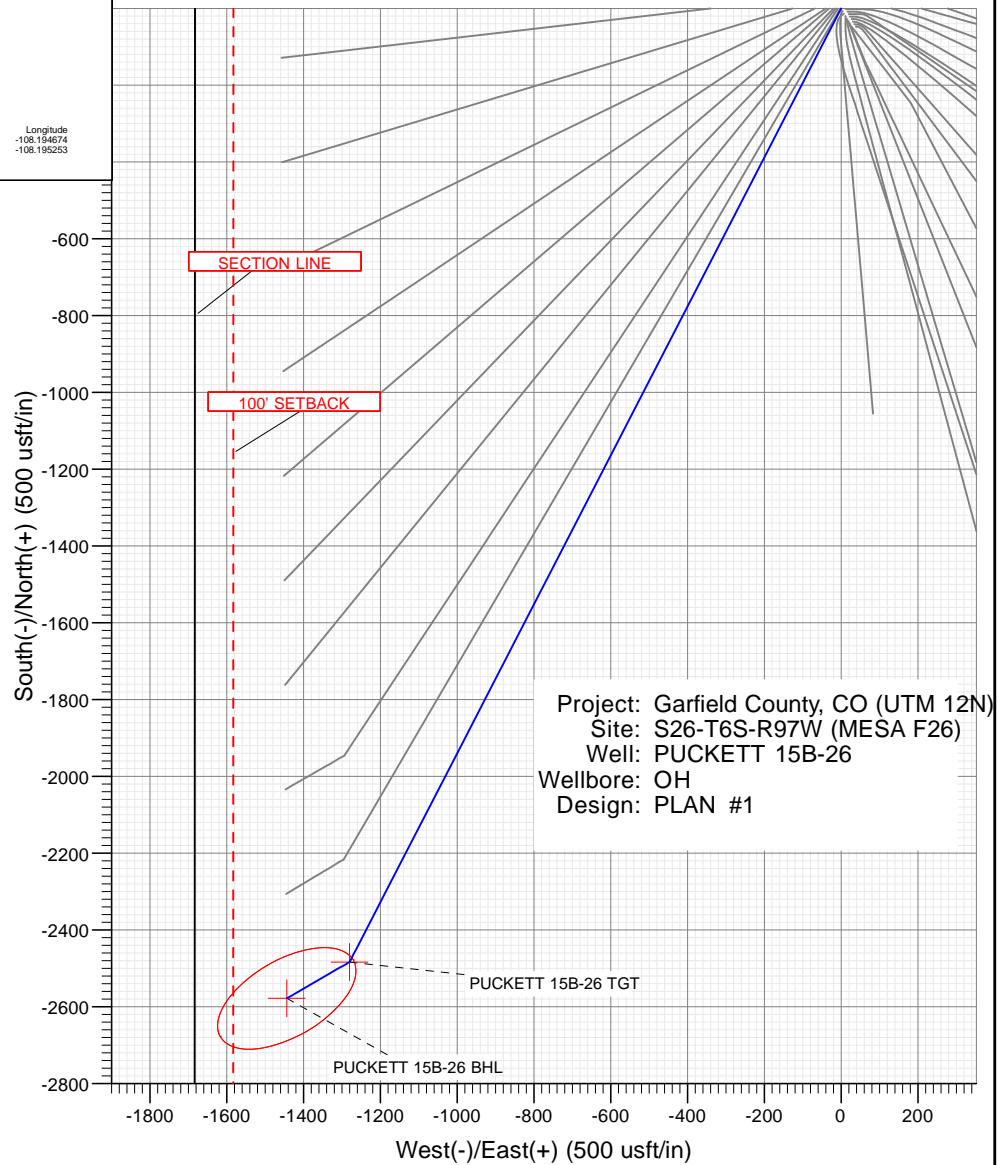
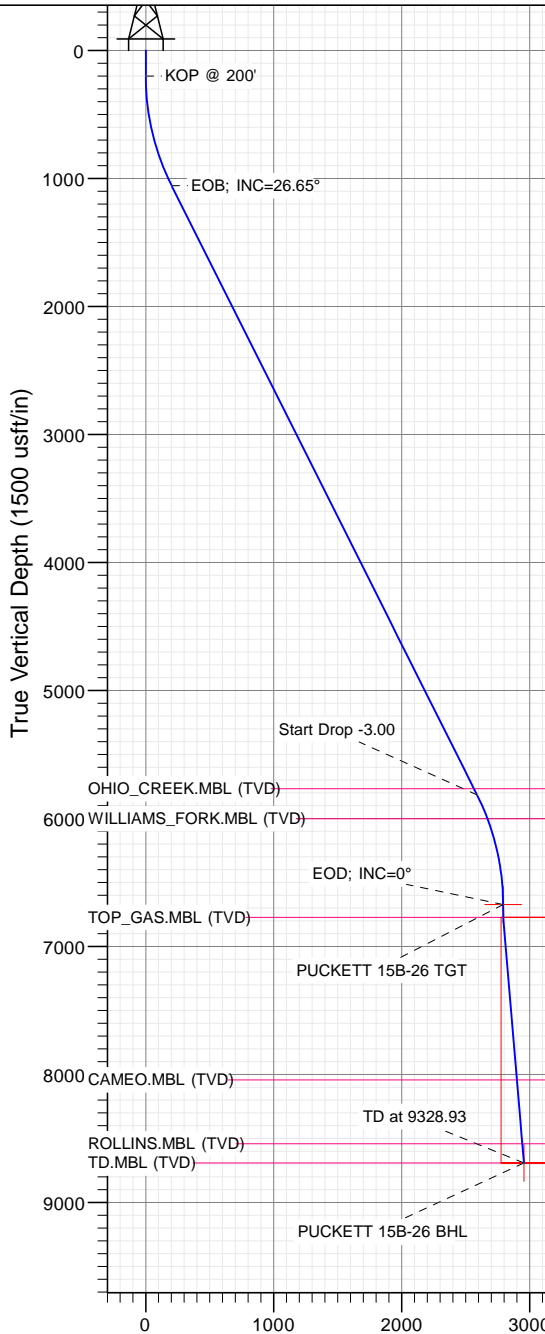


SECTION DETAILS

Sec	MD	Inc	Azi	TVD	+N/-S	+E/-W	Dleg	TFace	VSect	Target
1	0.00	0.00	0.00	0.00	0.00	0.00	0.00	0.00	0.00	
2	200.00	0.00	0.00	200.00	0.00	0.00	0.00	0.00	0.00	
3	1088.18	26.65	207.27	1056.51	-180.29	-92.94	3.00	207.27	202.71	
4	6412.62	26.65	207.27	5815.49	-2302.71	-1187.06	0.00	0.00	2589.13	
5	7300.81	0.00	0.00	6672.00	-2483.00	-1280.00	3.00	180.00	2791.84	PUCKETT 15B-26 TGT
6	7487.85	5.61	239.89	6858.75	-2487.59	-1287.92	3.00	239.89	2799.72	
7	9328.93	5.61	239.89	8691.00	-2577.91	-1443.64	0.00	0.00	2954.61	PUCKETT 15B-26 BHL

PLAN #1
PUCKETT 15B-26
16000 LR
30' KB @ 8322.00usft
Ground Level @ 8322.00
NAD 1927 - Western US
Well PUCKETT 15B-26, True North

Type	Target	Azimuth	Origin	Type	N/S	E/W	From
TD	No Target (Freehand)	209.25	Slot	0.00	0.00	0.00	0.00
Name		TVD	+N/-S	+E/-W	Latitude	Longitude	
PUCKETT 15B-26 TGT		6672.00	-2483.00	-1280.00	39.488128	-108.194674	
PUCKETT 15B-26 BHL		8691.00	-2577.91	-1443.64	39.487867	-108.195253	



FORMATION TOP DETAILS

TVDPPath	MDPath	Formation
5767.00	6358.37	OHIO_CREEK.MBL (TVD)
6001.00	6615.17	WILLIAMS_FORK.MBL (TVD)
6772.00	7400.85	TOP_GAS.MBL (TVD)
8041.00	8675.80	CAMEO.MBL (TVD)
8541.00	9178.21	ROLLINS.MBL (TVD)
8691.00	9328.93	TD.MBL (TVD)



Azimuths to True North
Magnetic North: 9.78°

Magnetic Field
Strength: 51819.9snT
Dip Angle: 65.83°
Date: 9/22/2016
Model: HDGM

Vertical Section at 209.25° (1500 usft/in)

WELL DETAILS: PUCKETT 15B-26

+N/-S	+E/-W	Northing	Ground Level:	8322.00	Latitude	Longitude
0.00	0.00	14354512.70	Easting	2433169.20	39.494943	-108.190140

CATHEDRAL



Cathedral Energy Services

Planning Report

Database:	USA EDM 5000 Multi Users DB	Local Co-ordinate Reference:	Well PUCKETT 15B-26
Company:	Caerus Oil & Gas	TVD Reference:	30' KB @ 8352.00usft
Project:	Garfield County, CO (UTM 12N)	MD Reference:	30' KB @ 8352.00usft
Site:	S26-T6S-R97W (MESA F26)	North Reference:	True
Well:	PUCKETT 15B-26	Survey Calculation Method:	Minimum Curvature
Wellbore:	OH		
Design:	PLAN #1		

Project	Garfield County, CO (UTM 12N)		
Map System:	Universal Transverse Mercator (US Survey Feet)	System Datum:	Mean Sea Level
Geo Datum:	NAD 1927 - Western US		
Map Zone:	Zone 12N (114 W to 108 W)		

Site		S26-T6S-R97W (MESA F26)			
Site Position:		Northing:	14,354,512.70 usft	Latitude:	39.494943
From:	Map	Easting:	2,433,169.20 usft	Longitude:	-108.190140
Position Uncertainty:	0.00 usft	Slot Radius:	13-3/16 "	Grid Convergence:	1.79 °

Well	PUCKETT 15B-26					
Well Position	+N/-S	0.00 usft	Northing:	14,354,512.70 usft	Latitude:	39.494943
	+E/-W	0.00 usft	Easting:	2,433,169.20 usft	Longitude:	-108.190140
Position Uncertainty		0.00 usft	Wellhead Elevation:	0.00 usft	Ground Level:	8,322.00 usft

Wellbore	OH				
Magnetics	Model Name	Sample Date	Declination	Dip Angle	Field Strength
			(°)	(°)	(nT)
	HDGM	9/22/2016	9.78	65.83	51,820

Design	PLAN #1			
Audit Notes:				
Version:	Phase:	PLAN	Tie On Depth:	0.00
Vertical Section:	Depth From (TVD)	+N/-S	+E/-W	Direction
	(usft)	(usft)	(usft)	(°)
	0.00	0.00	0.00	209.25

Plan Sections										
Measured Depth (usft)	Inclination (°)	Azimuth (°)	Vertical Depth (usft)	+N/-S (usft)	+E/-W (usft)	Dogleg Rate (°/100usft)	Build Rate (°/100usft)	Turn Rate (°/100usft)	TFO (°)	Target
0.00	0.00	0.00	0.00	0.00	0.00	0.00	0.00	0.00	0.00	
200.00	0.00	0.00	200.00	0.00	0.00	0.00	0.00	0.00	0.00	
1,088.18	26.65	207.27	1,056.51	-180.29	-92.94	3.00	3.00	0.00	207.27	
6,412.62	26.65	207.27	5,815.49	-2,302.71	-1,187.06	0.00	0.00	0.00	0.00	
7,300.81	0.00	0.00	6,672.00	-2,483.00	-1,280.00	3.00	-3.00	0.00	180.00	PUCKETT 15B-26 TC
7,487.85	5.61	239.89	6,858.75	-2,487.59	-1,287.92	3.00	3.00	-64.22	239.89	
9,328.93	5.61	239.89	8,691.00	-2,577.91	-1,443.64	0.00	0.00	0.00	0.00	PUCKETT 15B-26 BH

Cathedral Energy Services

Planning Report

Database:	USA EDM 5000 Multi Users DB	Local Co-ordinate Reference:	Well PUCKETT 15B-26
Company:	Caerus Oil & Gas	TVD Reference:	30' KB @ 8352.00usft
Project:	Garfield County, CO (UTM 12N)	MD Reference:	30' KB @ 8352.00usft
Site:	S26-T6S-R97W (MESA F26)	North Reference:	True
Well:	PUCKETT 15B-26	Survey Calculation Method:	Minimum Curvature
Wellbore:	OH		
Design:	PLAN #1		

Planned Survey

Measured Depth (usft)	Inclination (°)	Azimuth (°)	Vertical Depth (usft)	+N/-S (usft)	+E/-W (usft)	Vertical Section (usft)	Dogleg Rate (°/100usft)	Build Rate (°/100u)	Comments / Formations
0.00	0.00	0.00	0.00	0.00	0.00	0.00	0.00	0.00	
100.00	0.00	0.00	100.00	0.00	0.00	0.00	0.00	0.00	
200.00	0.00	0.00	200.00	0.00	0.00	0.00	0.00	0.00	KOP @ 200'
300.00	3.00	207.27	299.95	-2.33	-1.20	2.62	3.00	3.00	
400.00	6.00	207.27	399.63	-9.30	-4.79	10.46	3.00	3.00	
500.00	9.00	207.27	498.77	-20.90	-10.77	23.50	3.00	3.00	
600.00	12.00	207.27	597.08	-37.10	-19.12	41.71	3.00	3.00	
700.00	15.00	207.27	694.31	-57.84	-29.82	65.04	3.00	3.00	
800.00	18.00	207.27	790.18	-83.09	-42.83	93.42	3.00	3.00	
900.00	21.00	207.27	884.43	-112.75	-58.12	126.78	3.00	3.00	
1,000.00	24.00	207.27	976.81	-146.76	-75.66	165.02	3.00	3.00	
1,088.18	26.65	207.27	1,056.51	-180.29	-92.94	202.71	3.00	3.00	EOB; INC=26.65°
1,100.00	26.65	207.27	1,067.07	-185.00	-95.37	208.01	0.00	0.00	
1,200.00	26.65	207.27	1,156.45	-224.86	-115.92	252.83	0.00	0.00	
1,300.00	26.65	207.27	1,245.83	-264.72	-136.46	297.65	0.00	0.00	
1,400.00	26.65	207.27	1,335.21	-304.58	-157.01	342.47	0.00	0.00	
1,500.00	26.65	207.27	1,424.59	-344.44	-177.56	387.29	0.00	0.00	
1,600.00	26.65	207.27	1,513.97	-384.31	-198.11	432.11	0.00	0.00	
1,700.00	26.65	207.27	1,603.35	-424.17	-218.66	476.93	0.00	0.00	
1,800.00	26.65	207.27	1,692.73	-464.03	-239.21	521.75	0.00	0.00	
1,900.00	26.65	207.27	1,782.11	-503.89	-259.76	566.57	0.00	0.00	
2,000.00	26.65	207.27	1,871.49	-543.75	-280.31	611.39	0.00	0.00	
2,100.00	26.65	207.27	1,960.87	-583.62	-300.86	656.21	0.00	0.00	
2,200.00	26.65	207.27	2,050.25	-623.48	-321.41	701.03	0.00	0.00	
2,300.00	26.65	207.27	2,139.63	-663.34	-341.96	745.85	0.00	0.00	
2,400.00	26.65	207.27	2,229.01	-703.20	-362.50	790.67	0.00	0.00	
2,500.00	26.65	207.27	2,318.39	-743.06	-383.05	835.49	0.00	0.00	
2,600.00	26.65	207.27	2,407.77	-782.93	-403.60	880.31	0.00	0.00	
2,700.00	26.65	207.27	2,497.15	-822.79	-424.15	925.13	0.00	0.00	
2,800.00	26.65	207.27	2,586.53	-862.65	-444.70	969.95	0.00	0.00	
2,900.00	26.65	207.27	2,675.91	-902.51	-465.25	1,014.77	0.00	0.00	
3,000.00	26.65	207.27	2,765.29	-942.37	-485.80	1,059.59	0.00	0.00	
3,100.00	26.65	207.27	2,854.67	-982.24	-506.35	1,104.41	0.00	0.00	
3,200.00	26.65	207.27	2,944.05	-1,022.10	-526.90	1,149.23	0.00	0.00	
3,300.00	26.65	207.27	3,033.43	-1,061.96	-547.45	1,194.05	0.00	0.00	
3,400.00	26.65	207.27	3,122.81	-1,101.82	-568.00	1,238.87	0.00	0.00	
3,500.00	26.65	207.27	3,212.19	-1,141.68	-588.54	1,283.69	0.00	0.00	
3,600.00	26.65	207.27	3,301.57	-1,181.55	-609.09	1,328.51	0.00	0.00	
3,700.00	26.65	207.27	3,390.95	-1,221.41	-629.64	1,373.33	0.00	0.00	
3,800.00	26.65	207.27	3,480.33	-1,261.27	-650.19	1,418.15	0.00	0.00	
3,900.00	26.65	207.27	3,569.71	-1,301.13	-670.74	1,462.97	0.00	0.00	
4,000.00	26.65	207.27	3,659.09	-1,340.99	-691.29	1,507.79	0.00	0.00	
4,100.00	26.65	207.27	3,748.47	-1,380.86	-711.84	1,552.61	0.00	0.00	
4,200.00	26.65	207.27	3,837.85	-1,420.72	-732.39	1,597.43	0.00	0.00	
4,300.00	26.65	207.27	3,927.23	-1,460.58	-752.94	1,642.25	0.00	0.00	
4,400.00	26.65	207.27	4,016.61	-1,500.44	-773.49	1,687.07	0.00	0.00	
4,500.00	26.65	207.27	4,105.99	-1,540.30	-794.04	1,731.89	0.00	0.00	
4,600.00	26.65	207.27	4,195.37	-1,580.17	-814.58	1,776.71	0.00	0.00	
4,700.00	26.65	207.27	4,284.75	-1,620.03	-835.13	1,821.53	0.00	0.00	
4,800.00	26.65	207.27	4,374.13	-1,659.89	-855.68	1,866.35	0.00	0.00	
4,900.00	26.65	207.27	4,463.51	-1,699.75	-876.23	1,911.17	0.00	0.00	
5,000.00	26.65	207.27	4,552.89	-1,739.61	-896.78	1,955.99	0.00	0.00	

Cathedral Energy Services

Planning Report

Database:	USA EDM 5000 Multi Users DB	Local Co-ordinate Reference:	Well PUCKETT 15B-26
Company:	Caerus Oil & Gas	TVD Reference:	30' KB @ 8352.00usft
Project:	Garfield County, CO (UTM 12N)	MD Reference:	30' KB @ 8352.00usft
Site:	S26-T6S-R97W (MESA F26)	North Reference:	True
Well:	PUCKETT 15B-26	Survey Calculation Method:	Minimum Curvature
Wellbore:	OH		
Design:	PLAN #1		

Planned Survey									
Measured Depth (usft)	Inclination (°)	Azimuth (°)	Vertical Depth (usft)	+N/-S (usft)	+E/-W (usft)	Vertical Section (usft)	Dogleg Rate (°/100usft)	Build Rate (°/100u)	Comments / Formations
5,100.00	26.65	207.27	4,642.27	-1,779.48	-917.33	2,000.81	0.00	0.00	
5,200.00	26.65	207.27	4,731.65	-1,819.34	-937.88	2,045.63	0.00	0.00	
5,300.00	26.65	207.27	4,821.03	-1,859.20	-958.43	2,090.46	0.00	0.00	
5,400.00	26.65	207.27	4,910.41	-1,899.06	-978.98	2,135.28	0.00	0.00	
5,500.00	26.65	207.27	4,999.79	-1,938.93	-999.53	2,180.10	0.00	0.00	
5,600.00	26.65	207.27	5,089.17	-1,978.79	-1,020.08	2,224.92	0.00	0.00	
5,700.00	26.65	207.27	5,178.55	-2,018.65	-1,040.62	2,269.74	0.00	0.00	
5,800.00	26.65	207.27	5,267.93	-2,058.51	-1,061.17	2,314.56	0.00	0.00	
5,900.00	26.65	207.27	5,357.31	-2,098.37	-1,081.72	2,359.38	0.00	0.00	
6,000.00	26.65	207.27	5,446.69	-2,138.24	-1,102.27	2,404.20	0.00	0.00	
6,100.00	26.65	207.27	5,536.07	-2,178.10	-1,122.82	2,449.02	0.00	0.00	
6,200.00	26.65	207.27	5,625.45	-2,217.96	-1,143.37	2,493.84	0.00	0.00	
6,300.00	26.65	207.27	5,714.83	-2,257.82	-1,163.92	2,538.66	0.00	0.00	
6,358.37	26.65	207.27	5,767.00	-2,281.09	-1,175.91	2,564.82	0.00	0.00	OHIO_CREEK.MBL (TVD)
6,400.00	26.65	207.27	5,804.20	-2,297.68	-1,184.47	2,583.48	0.00	0.00	
6,412.62	26.65	207.27	5,815.49	-2,302.71	-1,187.06	2,589.13	0.00	0.00	Start Drop -3.00
6,500.00	24.02	207.27	5,894.45	-2,335.95	-1,204.19	2,626.50	3.00	-3.00	
6,600.00	21.02	207.27	5,986.81	-2,369.99	-1,221.74	2,664.78	3.00	-3.00	
6,615.17	20.57	207.27	6,001.00	-2,374.78	-1,224.21	2,670.16	3.00	-3.00	WILLIAMS_FORK.MBL (TVD)
6,700.00	18.02	207.27	6,081.05	-2,399.69	-1,237.05	2,698.18	3.00	-3.00	
6,800.00	15.02	207.27	6,176.91	-2,424.97	-1,250.09	2,726.60	3.00	-3.00	
6,900.00	12.02	207.27	6,274.13	-2,445.75	-1,260.80	2,749.97	3.00	-3.00	
7,000.00	9.02	207.27	6,372.44	-2,461.99	-1,269.17	2,768.22	3.00	-3.00	
7,100.00	6.02	207.27	6,471.56	-2,473.63	-1,275.17	2,781.30	3.00	-3.00	
7,200.00	3.02	207.27	6,571.24	-2,480.64	-1,278.78	2,789.19	3.00	-3.00	
7,300.00	0.02	207.27	6,671.19	-2,483.00	-1,280.00	2,791.84	3.00	-3.00	
7,300.81	0.00	0.00	6,672.00	-2,483.00	-1,280.00	2,791.84	3.00	-3.00	EOD; INC=0°
7,400.00	2.98	239.89	6,771.15	-2,484.29	-1,282.23	2,794.06	3.00	3.00	
7,400.85	3.00	239.89	6,772.00	-2,484.31	-1,282.27	2,794.10	3.00	3.00	TOP_GAS.MBL (TVD)
7,487.85	5.61	239.89	6,858.75	-2,487.59	-1,287.92	2,799.72	3.00	3.00	
7,500.00	5.61	239.89	6,870.84	-2,488.19	-1,288.94	2,800.74	0.00	0.00	
7,600.00	5.61	239.89	6,970.36	-2,493.09	-1,297.40	2,809.15	0.00	0.00	
7,700.00	5.61	239.89	7,069.88	-2,498.00	-1,305.86	2,817.57	0.00	0.00	
7,800.00	5.61	239.89	7,169.40	-2,502.90	-1,314.32	2,825.98	0.00	0.00	
7,900.00	5.61	239.89	7,268.92	-2,507.81	-1,322.78	2,834.39	0.00	0.00	
8,000.00	5.61	239.89	7,368.44	-2,512.72	-1,331.24	2,842.81	0.00	0.00	
8,100.00	5.61	239.89	7,467.96	-2,517.62	-1,339.69	2,851.22	0.00	0.00	
8,200.00	5.61	239.89	7,567.48	-2,522.53	-1,348.15	2,859.63	0.00	0.00	
8,300.00	5.61	239.89	7,667.00	-2,527.43	-1,356.61	2,868.05	0.00	0.00	
8,400.00	5.61	239.89	7,766.52	-2,532.34	-1,365.07	2,876.46	0.00	0.00	
8,500.00	5.61	239.89	7,866.04	-2,537.24	-1,373.53	2,884.87	0.00	0.00	
8,600.00	5.61	239.89	7,965.57	-2,542.15	-1,381.99	2,893.28	0.00	0.00	
8,675.80	5.61	239.89	8,041.00	-2,545.87	-1,388.40	2,899.66	0.00	0.00	CAMEO.MBL (TVD)
8,700.00	5.61	239.89	8,065.09	-2,547.06	-1,390.44	2,901.70	0.00	0.00	
8,800.00	5.61	239.89	8,164.61	-2,551.96	-1,398.90	2,910.11	0.00	0.00	
8,900.00	5.61	239.89	8,264.13	-2,556.87	-1,407.36	2,918.52	0.00	0.00	
9,000.00	5.61	239.89	8,363.65	-2,561.77	-1,415.82	2,926.94	0.00	0.00	
9,100.00	5.61	239.89	8,463.17	-2,566.68	-1,424.28	2,935.35	0.00	0.00	
9,178.21	5.61	239.89	8,541.00	-2,570.52	-1,430.89	2,941.93	0.00	0.00	ROLLINS.MBL (TVD)
9,200.00	5.61	239.89	8,562.69	-2,571.58	-1,432.74	2,943.76	0.00	0.00	
9,300.00	5.61	239.89	8,662.21	-2,576.49	-1,441.19	2,952.18	0.00	0.00	
9,328.93	5.61	239.89	8,691.00	-2,577.91	-1,443.64	2,954.61	0.00	0.00	TD at 9328.93 - TD.MBL (TVD)

Cathedral Energy Services

Planning Report

Database:	USA EDM 5000 Multi Users DB	Local Co-ordinate Reference:	Well PUCKETT 15B-26
Company:	Caerus Oil & Gas	TVD Reference:	30' KB @ 8352.00usft
Project:	Garfield County, CO (UTM 12N)	MD Reference:	30' KB @ 8352.00usft
Site:	S26-T6S-R97W (MESA F26)	North Reference:	True
Well:	PUCKETT 15B-26	Survey Calculation Method:	Minimum Curvature
Wellbore:	OH		
Design:	PLAN #1		

Targets									
Target Name									
- hit/miss target	Dip Angle	Dip Dir.	TVD	+N/-S	+E/-W	Northing	Easting	Latitude	Longitude
- Shape	(°)	(°)	(usft)	(usft)	(usft)	(usft)	(usft)		
PUCKETT 15B-26 BHL	0.00	0.00	8,691.00	-2,577.91	-1,443.64	14,351,891.00	2,431,806.70	39.487867	-108.195253
- plan hits target center									
- Ellipse (radii L200.00 W100.00 on 240.00 azi)									
PUCKETT 15B-26 TGT	0.00	0.00	6,672.00	-2,483.00	-1,280.00	14,351,990.97	2,431,967.30	39.488128	-108.194674
- plan hits target center									
- Point									

Formations						
Measured Depth	Vertical Depth	Name	Lithology	Dip	Dip Direction	
(usft)	(usft)			(°)	(°)	
6,358.37	5,767.00	OHIO_CREEK.MBL (TVD)				
6,615.17	6,001.00	WILLIAMS_FORK.MBL (TVD)				
7,400.85	6,772.00	TOP_GAS.MBL (TVD)				
8,675.80	8,041.00	CAMEO.MBL (TVD)				
9,178.21	8,541.00	ROLLINS.MBL (TVD)				
9,328.93	8,691.00	TD.MBL (TVD)				

Plan Annotations					
Measured Depth	Vertical Depth	Local Coordinates			
(usft)	(usft)	+N/-S	+E/-W	Comment	
(usft)	(usft)	(usft)	(usft)		
200.00	200.00	0.00	0.00	KOP @ 200'	
1,088.18	1,056.51	-180.29	-92.94	EOB; INC=26.65°	
6,412.62	5,815.49	-2,302.71	-1,187.06	Start Drop -3.00	
7,300.81	6,672.00	-2,483.00	-1,280.00	EOD; INC=0°	
9,328.93	8,691.00	-2,577.91	-1,443.64	TD at 9328.93	