



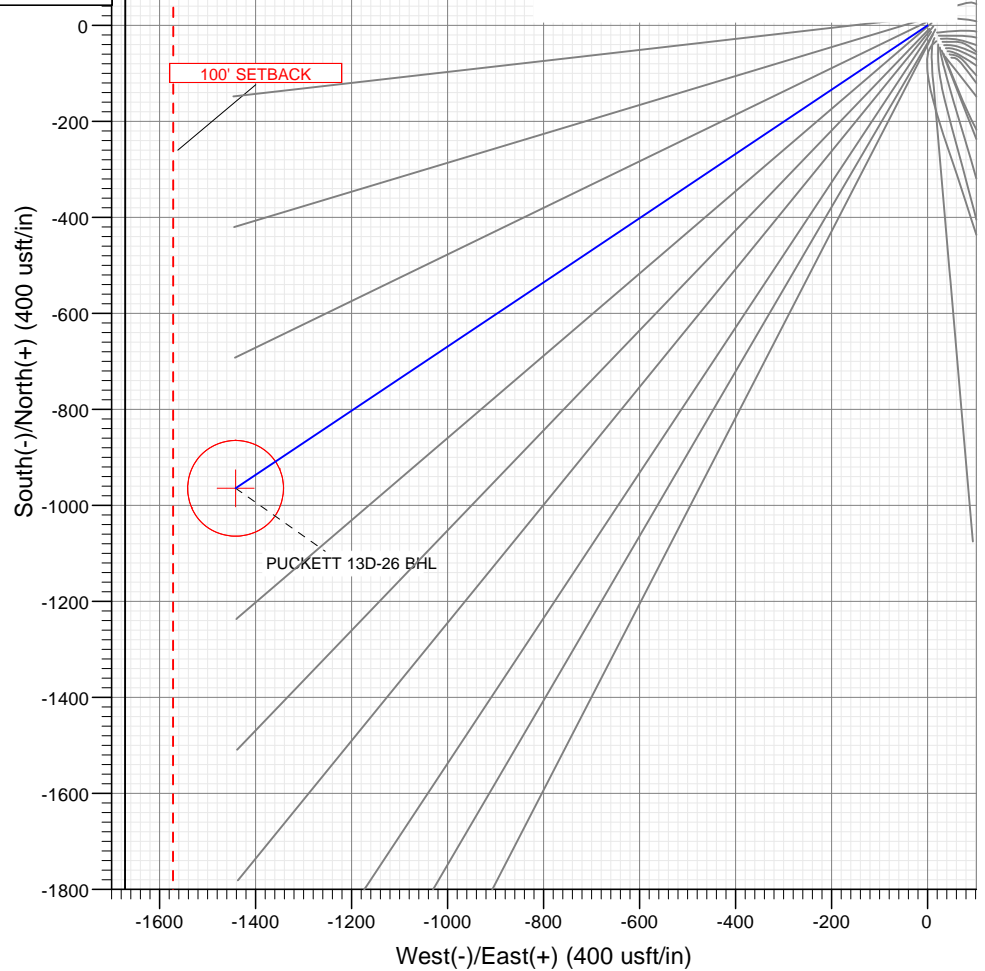
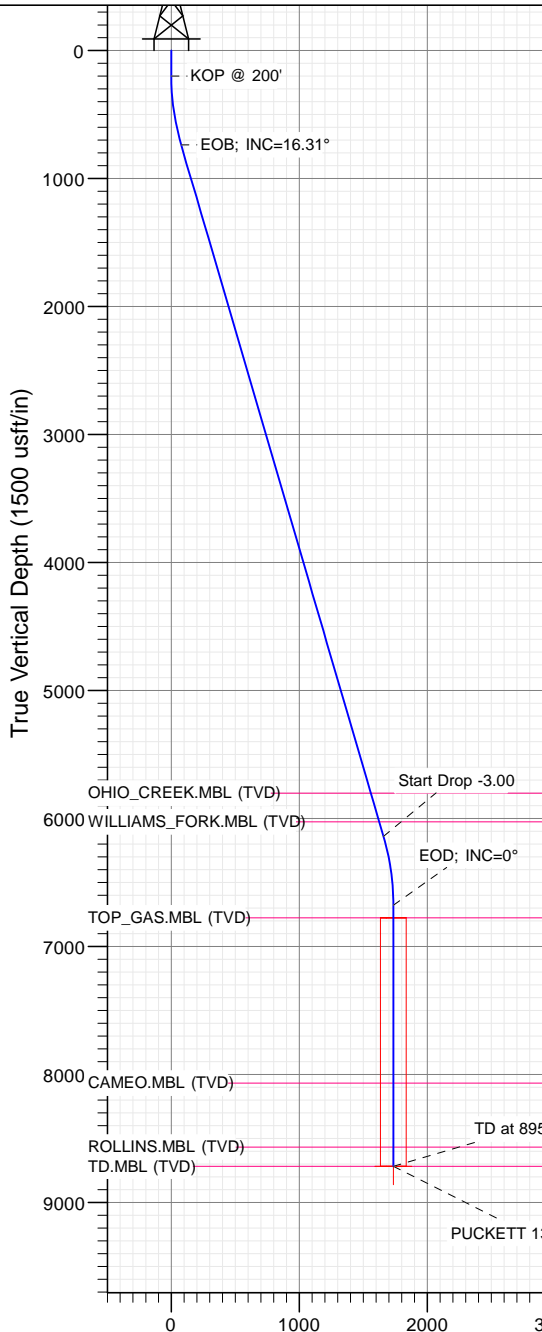
# SECTION DETAILS

Sec	MD	Inc	Azi	TVD	+N/-S	+E/-W	Dleg	TFace	VSec	Target
1	0.00	0.00	0.00	0.00	0.00	0.00	0.00	0.00	0.00	
2	200.00	0.00	0.00	200.00	0.00	0.00	0.00	0.00	0.00	
3	743.53	16.31	236.22	736.22	-42.72	-63.85	3.00	236.22	76.82	
4	6373.54	16.31	236.22	6139.78	-921.68	-1377.64	0.00	0.00	1657.52	
5	6917.07	0.00	0.00	6676.00	-964.39	-1441.49	3.00	180.00	1734.35	
6	8958.07	0.00	0.00	8717.00	-964.39	-1441.49	0.00	0.00	1734.35	PUCKETT 13D-26 BHL

PLAN #1  
PUCKETT 13D-26  
XXX16; LR  
30' KB @ 8322.00usft  
Ground Level @ 8322.00  
NAD 1927 - Western US  
Well PUCKETT 13D-26, True North

Type	Target	Target	Target	Target	Target	Target	Target	Target	Target	Target
TD	No Target	No Target	No Target	No Target	No Target	No Target	No Target	No Target	No Target	No Target
Name	PUCKETT 13D-26 BHL									
TVD	8717.00									
+N/-S	-964.39									
+E/-W	-1441.49									
Latitude	39.492349									
Longitude	-108.195296									

Project: Garfield County, CO (UTM 12N)  
Site: S26-T6S-R97W (MESA F26)  
Well: PUCKETT 13D-26  
Wellbore: OH  
Design: PLAN #1



FORMATION TOP DETAILS		
TVDPath	MDPath	Formation
5802.00	6021.61	OHIO_CREEK.MBL (TVD)
6025.00	6253.95	WILLIAMS_FORK.MBL (TVD)
6776.00	7017.07	TOP_GAS.MBL (TVD)
8067.00	8308.07	CAMEO.MBL (TVD)
8567.00	8808.07	ROLLINS.MBL (TVD)
8717.00	8958.07	TD.MBL (TVD)



Azimuths to True North  
Magnetic North: 9.78°  
Magnetic Field  
Strength: 51819.5nT  
Dip Angle: 65.83°  
Date: 9/23/2016  
Model: HDGM

Vertical Section at 236.22° (1500 usft/in)

## WELL DETAILS: PUCKETT 13D-26

+N/-S	+E/-W	Northing	Ground Level:	8322.00	Latitude	Longitude
0.00	0.00	14354531.90	Easting	2433157.40	39.494996	-108.190180

CATHEDRAL



# Cathedral Energy Services

## Planning Report

<b>Database:</b>	USA EDM 5000 Multi Users DB	<b>Local Co-ordinate Reference:</b>	Well PUCKETT 13D-26
<b>Company:</b>	Caerus Oil & Gas	<b>TVD Reference:</b>	30' KB @ 8352.00usft
<b>Project:</b>	Garfield County, CO (UTM 12N)	<b>MD Reference:</b>	30' KB @ 8352.00usft
<b>Site:</b>	S26-T6S-R97W (MESA F26)	<b>North Reference:</b>	True
<b>Well:</b>	PUCKETT 13D-26	<b>Survey Calculation Method:</b>	Minimum Curvature
<b>Wellbore:</b>	OH		
<b>Design:</b>	PLAN #1		

<b>Project</b>	Garfield County, CO (UTM 12N)		
<b>Map System:</b>	Universal Transverse Mercator (US Survey Feet)	<b>System Datum:</b>	Mean Sea Level
<b>Geo Datum:</b>	NAD 1927 - Western US		
<b>Map Zone:</b>	Zone 12N (114 W to 108 W)		

Site		S26-T6S-R97W (MESA F26)			
Site Position:		Northing:	14,354,512.70 usft	Latitude:	39.494943
From:	Map	Easting:	2,433,169.20 usft	Longitude:	-108.190140
Position Uncertainty:	0.00 usft	Slot Radius:	13-3/16"	Grid Convergence:	1.79 °

Well	PUCKETT 13D-26					
Well Position	+N/-S	0.00 usft	Northing:	14,354,531.90 usft	Latitude:	39.494996
	+E/-W	0.00 usft	Easting:	2,433,157.40 usft	Longitude:	-108.190180
Position Uncertainty		0.00 usft	Wellhead Elevation:	0.00 usft	Ground Level:	8,322.00 usft

<b>Wellbore</b>	OH				
<b>Magnetics</b>	<b>Model Name</b>	<b>Sample Date</b>	<b>Declination</b>	<b>Dip Angle</b>	<b>Field Strength</b>
			(°)	(°)	(nT)
	HDGM	9/23/2016	9.78	65.83	51,820

<b>Design</b>	PLAN #1			
<b>Audit Notes:</b>				
<b>Version:</b>	<b>Phase:</b>	PLAN	<b>Tie On Depth:</b>	0.00
<b>Vertical Section:</b>	<b>Depth From (TVD)</b>	<b>+N/-S</b>	<b>+E/-W</b>	<b>Direction</b>
	(usft)	(usft)	(usft)	(°)
	0.00	0.00	0.00	236.22

<b>Plan Sections</b>										
Measured Depth (usft)	Inclination (°)	Azimuth (°)	Vertical Depth (usft)	+N/-S (usft)	+E/-W (usft)	Dogleg Rate (°/100usft)	Build Rate (°/100usft)	Turn Rate (°/100usft)	TFO (°)	Target
0.00	0.00	0.00	0.00	0.00	0.00	0.00	0.00	0.00	0.00	
200.00	0.00	0.00	200.00	0.00	0.00	0.00	0.00	0.00	0.00	
743.53	16.31	236.22	736.22	-42.72	-63.85	3.00	3.00	0.00	236.22	
6,373.54	16.31	236.22	6,139.78	-921.68	-1,377.64	0.00	0.00	0.00	0.00	
6,917.07	0.00	0.00	6,676.00	-964.39	-1,441.49	3.00	-3.00	0.00	180.00	
8,958.07	0.00	0.00	8,717.00	-964.39	-1,441.49	0.00	0.00	0.00	0.00	PUCKETT 13D-26 BH

# Cathedral Energy Services

## Planning Report

<b>Database:</b>	USA EDM 5000 Multi Users DB	<b>Local Co-ordinate Reference:</b>	Well PUCKETT 13D-26
<b>Company:</b>	Caerus Oil & Gas	<b>TVD Reference:</b>	30' KB @ 8352.00usft
<b>Project:</b>	Garfield County, CO (UTM 12N)	<b>MD Reference:</b>	30' KB @ 8352.00usft
<b>Site:</b>	S26-T6S-R97W (MESA F26)	<b>North Reference:</b>	True
<b>Well:</b>	PUCKETT 13D-26	<b>Survey Calculation Method:</b>	Minimum Curvature
<b>Wellbore:</b>	OH		
<b>Design:</b>	PLAN #1		

### Planned Survey

Measured Depth (usft)	Inclination (°)	Azimuth (°)	Vertical Depth (usft)	+N/-S (usft)	+E/-W (usft)	Vertical Section (usft)	Dogleg Rate (°/100usft)	Build Rate (°/100u)	Comments / Formations
0.00	0.00	0.00	0.00	0.00	0.00	0.00	0.00	0.00	
100.00	0.00	0.00	100.00	0.00	0.00	0.00	0.00	0.00	
200.00	0.00	0.00	200.00	0.00	0.00	0.00	0.00	0.00	KOP @ 200'
300.00	3.00	236.22	299.95	-1.46	-2.18	2.62	3.00	3.00	
400.00	6.00	236.22	399.63	-5.82	-8.70	10.46	3.00	3.00	
500.00	9.00	236.22	498.77	-13.07	-19.54	23.51	3.00	3.00	
600.00	12.00	236.22	597.08	-23.21	-34.69	41.74	3.00	3.00	
700.00	15.00	236.22	694.31	-36.19	-54.09	65.08	3.00	3.00	
743.53	16.31	236.22	736.22	-42.72	-63.85	76.82	3.00	3.00	EOB; INC=16.31°
800.00	16.31	236.22	790.42	-51.53	-77.03	92.68	0.00	0.00	
900.00	16.31	236.22	886.40	-67.15	-100.36	120.75	0.00	0.00	
1,000.00	16.31	236.22	982.38	-82.76	-123.70	148.83	0.00	0.00	
1,100.00	16.31	236.22	1,078.35	-98.37	-147.03	176.91	0.00	0.00	
1,200.00	16.31	236.22	1,174.33	-113.98	-170.37	204.98	0.00	0.00	
1,300.00	16.31	236.22	1,270.31	-129.59	-193.71	233.06	0.00	0.00	
1,400.00	16.31	236.22	1,366.29	-145.21	-217.04	261.13	0.00	0.00	
1,500.00	16.31	236.22	1,462.27	-160.82	-240.38	289.21	0.00	0.00	
1,600.00	16.31	236.22	1,558.24	-176.43	-263.71	317.29	0.00	0.00	
1,700.00	16.31	236.22	1,654.22	-192.04	-287.05	345.36	0.00	0.00	
1,800.00	16.31	236.22	1,750.20	-207.65	-310.38	373.44	0.00	0.00	
1,900.00	16.31	236.22	1,846.18	-223.27	-333.72	401.52	0.00	0.00	
2,000.00	16.31	236.22	1,942.15	-238.88	-357.05	429.59	0.00	0.00	
2,100.00	16.31	236.22	2,038.13	-254.49	-380.39	457.67	0.00	0.00	
2,200.00	16.31	236.22	2,134.11	-270.10	-403.72	485.75	0.00	0.00	
2,300.00	16.31	236.22	2,230.09	-285.71	-427.06	513.82	0.00	0.00	
2,400.00	16.31	236.22	2,326.06	-301.33	-450.40	541.90	0.00	0.00	
2,500.00	16.31	236.22	2,422.04	-316.94	-473.73	569.97	0.00	0.00	
2,600.00	16.31	236.22	2,518.02	-332.55	-497.07	598.05	0.00	0.00	
2,700.00	16.31	236.22	2,614.00	-348.16	-520.40	626.13	0.00	0.00	
2,800.00	16.31	236.22	2,709.98	-363.77	-543.74	654.20	0.00	0.00	
2,900.00	16.31	236.22	2,805.95	-379.39	-567.07	682.28	0.00	0.00	
3,000.00	16.31	236.22	2,901.93	-395.00	-590.41	710.36	0.00	0.00	
3,100.00	16.31	236.22	2,997.91	-410.61	-613.74	738.43	0.00	0.00	
3,200.00	16.31	236.22	3,093.89	-426.22	-637.08	766.51	0.00	0.00	
3,300.00	16.31	236.22	3,189.86	-441.83	-660.42	794.59	0.00	0.00	
3,400.00	16.31	236.22	3,285.84	-457.45	-683.75	822.66	0.00	0.00	
3,500.00	16.31	236.22	3,381.82	-473.06	-707.09	850.74	0.00	0.00	
3,600.00	16.31	236.22	3,477.80	-488.67	-730.42	878.81	0.00	0.00	
3,700.00	16.31	236.22	3,573.77	-504.28	-753.76	906.89	0.00	0.00	
3,800.00	16.31	236.22	3,669.75	-519.89	-777.09	934.97	0.00	0.00	
3,900.00	16.31	236.22	3,765.73	-535.51	-800.43	963.04	0.00	0.00	
4,000.00	16.31	236.22	3,861.71	-551.12	-823.76	991.12	0.00	0.00	
4,100.00	16.31	236.22	3,957.69	-566.73	-847.10	1,019.20	0.00	0.00	
4,200.00	16.31	236.22	4,053.66	-582.34	-870.44	1,047.27	0.00	0.00	
4,300.00	16.31	236.22	4,149.64	-597.95	-893.77	1,075.35	0.00	0.00	
4,400.00	16.31	236.22	4,245.62	-613.57	-917.11	1,103.43	0.00	0.00	
4,500.00	16.31	236.22	4,341.60	-629.18	-940.44	1,131.50	0.00	0.00	
4,600.00	16.31	236.22	4,437.57	-644.79	-963.78	1,159.58	0.00	0.00	
4,700.00	16.31	236.22	4,533.55	-660.40	-987.11	1,187.65	0.00	0.00	
4,800.00	16.31	236.22	4,629.53	-676.01	-1,010.45	1,215.73	0.00	0.00	
4,900.00	16.31	236.22	4,725.51	-691.63	-1,033.78	1,243.81	0.00	0.00	
5,000.00	16.31	236.22	4,821.48	-707.24	-1,057.12	1,271.88	0.00	0.00	

# Cathedral Energy Services

## Planning Report

<b>Database:</b>	USA EDM 5000 Multi Users DB	<b>Local Co-ordinate Reference:</b>	Well PUCKETT 13D-26
<b>Company:</b>	Caerus Oil & Gas	<b>TVD Reference:</b>	30' KB @ 8352.00usft
<b>Project:</b>	Garfield County, CO (UTM 12N)	<b>MD Reference:</b>	30' KB @ 8352.00usft
<b>Site:</b>	S26-T6S-R97W (MESA F26)	<b>North Reference:</b>	True
<b>Well:</b>	PUCKETT 13D-26	<b>Survey Calculation Method:</b>	Minimum Curvature
<b>Wellbore:</b>	OH		
<b>Design:</b>	PLAN #1		

Planned Survey									
Measured Depth (usft)	Inclination (°)	Azimuth (°)	Vertical Depth (usft)	+N/-S (usft)	+E/-W (usft)	Vertical Section (usft)	Dogleg Rate (°/100usft)	Build Rate (°/100u)	Comments / Formations
5,100.00	16.31	236.22	4,917.46	-722.85	-1,080.46	1,299.96	0.00	0.00	
5,200.00	16.31	236.22	5,013.44	-738.46	-1,103.79	1,328.04	0.00	0.00	
5,300.00	16.31	236.22	5,109.42	-754.07	-1,127.13	1,356.11	0.00	0.00	
5,400.00	16.31	236.22	5,205.40	-769.69	-1,150.46	1,384.19	0.00	0.00	
5,500.00	16.31	236.22	5,301.37	-785.30	-1,173.80	1,412.27	0.00	0.00	
5,600.00	16.31	236.22	5,397.35	-800.91	-1,197.13	1,440.34	0.00	0.00	
5,700.00	16.31	236.22	5,493.33	-816.52	-1,220.47	1,468.42	0.00	0.00	
5,800.00	16.31	236.22	5,589.31	-832.13	-1,243.80	1,496.49	0.00	0.00	
5,900.00	16.31	236.22	5,685.28	-847.75	-1,267.14	1,524.57	0.00	0.00	
6,000.00	16.31	236.22	5,781.26	-863.36	-1,290.48	1,552.65	0.00	0.00	
6,021.61	16.31	236.22	5,802.00	-866.73	-1,295.52	1,558.71	0.00	0.00	OHIO_CREEK.MBL (TVD)
6,100.00	16.31	236.22	5,877.24	-878.97	-1,313.81	1,580.72	0.00	0.00	
6,200.00	16.31	236.22	5,973.22	-894.58	-1,337.15	1,608.80	0.00	0.00	
6,253.95	16.31	236.22	6,025.00	-903.00	-1,349.74	1,623.95	0.00	0.00	WILLIAMS_FORK.MBL (TVD)
6,300.00	16.31	236.22	6,069.19	-910.19	-1,360.48	1,636.88	0.00	0.00	
6,373.54	16.31	236.22	6,139.78	-921.68	-1,377.64	1,657.52	0.00	0.00	Start Drop -3.00
6,400.00	15.51	236.22	6,165.22	-925.71	-1,383.67	1,664.78	3.00	-3.00	
6,500.00	12.51	236.22	6,262.24	-939.17	-1,403.79	1,688.99	3.00	-3.00	
6,600.00	9.51	236.22	6,360.38	-949.79	-1,419.67	1,708.09	3.00	-3.00	
6,700.00	6.51	236.22	6,459.40	-957.54	-1,431.25	1,722.02	3.00	-3.00	
6,800.00	3.51	236.22	6,559.00	-962.40	-1,438.51	1,730.76	3.00	-3.00	
6,900.00	0.51	236.22	6,658.93	-964.35	-1,441.43	1,734.27	3.00	-3.00	
6,917.07	0.00	0.00	6,676.00	-964.39	-1,441.49	1,734.35	3.00	-3.00	EOD; INC=0°
7,000.00	0.00	0.00	6,758.93	-964.39	-1,441.49	1,734.35	0.00	0.00	
7,017.07	0.00	0.00	6,776.00	-964.39	-1,441.49	1,734.35	0.00	0.00	TOP_GAS.MBL (TVD)
7,100.00	0.00	0.00	6,858.93	-964.39	-1,441.49	1,734.35	0.00	0.00	
7,200.00	0.00	0.00	6,958.93	-964.39	-1,441.49	1,734.35	0.00	0.00	
7,300.00	0.00	0.00	7,058.93	-964.39	-1,441.49	1,734.35	0.00	0.00	
7,400.00	0.00	0.00	7,158.93	-964.39	-1,441.49	1,734.35	0.00	0.00	
7,500.00	0.00	0.00	7,258.93	-964.39	-1,441.49	1,734.35	0.00	0.00	
7,600.00	0.00	0.00	7,358.93	-964.39	-1,441.49	1,734.35	0.00	0.00	
7,700.00	0.00	0.00	7,458.93	-964.39	-1,441.49	1,734.35	0.00	0.00	
7,800.00	0.00	0.00	7,558.93	-964.39	-1,441.49	1,734.35	0.00	0.00	
7,900.00	0.00	0.00	7,658.93	-964.39	-1,441.49	1,734.35	0.00	0.00	
8,000.00	0.00	0.00	7,758.93	-964.39	-1,441.49	1,734.35	0.00	0.00	
8,100.00	0.00	0.00	7,858.93	-964.39	-1,441.49	1,734.35	0.00	0.00	
8,200.00	0.00	0.00	7,958.93	-964.39	-1,441.49	1,734.35	0.00	0.00	
8,300.00	0.00	0.00	8,058.93	-964.39	-1,441.49	1,734.35	0.00	0.00	
8,308.07	0.00	0.00	8,067.00	-964.39	-1,441.49	1,734.35	0.00	0.00	CAMEO.MBL (TVD)
8,400.00	0.00	0.00	8,158.93	-964.39	-1,441.49	1,734.35	0.00	0.00	
8,500.00	0.00	0.00	8,258.93	-964.39	-1,441.49	1,734.35	0.00	0.00	
8,600.00	0.00	0.00	8,358.93	-964.39	-1,441.49	1,734.35	0.00	0.00	
8,700.00	0.00	0.00	8,458.93	-964.39	-1,441.49	1,734.35	0.00	0.00	
8,800.00	0.00	0.00	8,558.93	-964.39	-1,441.49	1,734.35	0.00	0.00	
8,808.07	0.00	0.00	8,567.00	-964.39	-1,441.49	1,734.35	0.00	0.00	ROLLINS.MBL (TVD)
8,900.00	0.00	0.00	8,658.93	-964.39	-1,441.49	1,734.35	0.00	0.00	
8,958.07	0.00	0.00	8,717.00	-964.39	-1,441.49	1,734.35	0.00	0.00	TD at 8958.07 - TD.MBL (TVD)

# Cathedral Energy Services

## Planning Report

<b>Database:</b>	USA EDM 5000 Multi Users DB	<b>Local Co-ordinate Reference:</b>	Well PUCKETT 13D-26
<b>Company:</b>	Caerus Oil & Gas	<b>TVD Reference:</b>	30' KB @ 8352.00usft
<b>Project:</b>	Garfield County, CO (UTM 12N)	<b>MD Reference:</b>	30' KB @ 8352.00usft
<b>Site:</b>	S26-T6S-R97W (MESA F26)	<b>North Reference:</b>	True
<b>Well:</b>	PUCKETT 13D-26	<b>Survey Calculation Method:</b>	Minimum Curvature
<b>Wellbore:</b>	OH		
<b>Design:</b>	PLAN #1		

Targets									
Target Name									
- hit/miss target	Dip Angle	Dip Dir.	TVD	+N/-S	+E/-W	Northing	Easting	Latitude	Longitude
- Shape	(°)	(°)	(usft)	(usft)	(usft)	(usft)	(usft)		
PUCKETT 13D-26 BHL	0.00	0.00	8,717.00	-964.39	-1,441.49	14,353,523.00	2,431,746.70	39.492349	-108.195286
- plan hits target center									
- Circle (radius 100.00)									

Formations						
Measured Depth	Vertical Depth	Name	Lithology	Dip	Dip Direction	
(usft)	(usft)			(°)	(°)	
6,021.61	5,802.00	OHIO_CREEK.MBL (TVD)				
6,253.95	6,025.00	WILLIAMS_FORK.MBL (TVD)				
7,017.07	6,776.00	TOP_GAS.MBL (TVD)				
8,308.07	8,067.00	CAMEO.MBL (TVD)				
8,808.07	8,567.00	ROLLINS.MBL (TVD)				
8,958.07	8,717.00	TD.MBL (TVD)				

Plan Annotations					
Measured Depth	Vertical Depth	Local Coordinates			
(usft)	(usft)	+N/-S (usft)	+E/-W (usft)	Comment	
200.00	200.00	0.00	0.00	KOP @ 200'	
743.53	736.22	-42.72	-63.85	EOB; INC=16.31°	
6,373.54	6,139.78	-921.68	-1,377.64	Start Drop -3.00	
6,917.07	6,676.00	-964.39	-1,441.49	EOD; INC=0°	
8,958.07	8,717.00	-964.39	-1,441.49	TD at 8958.07	