



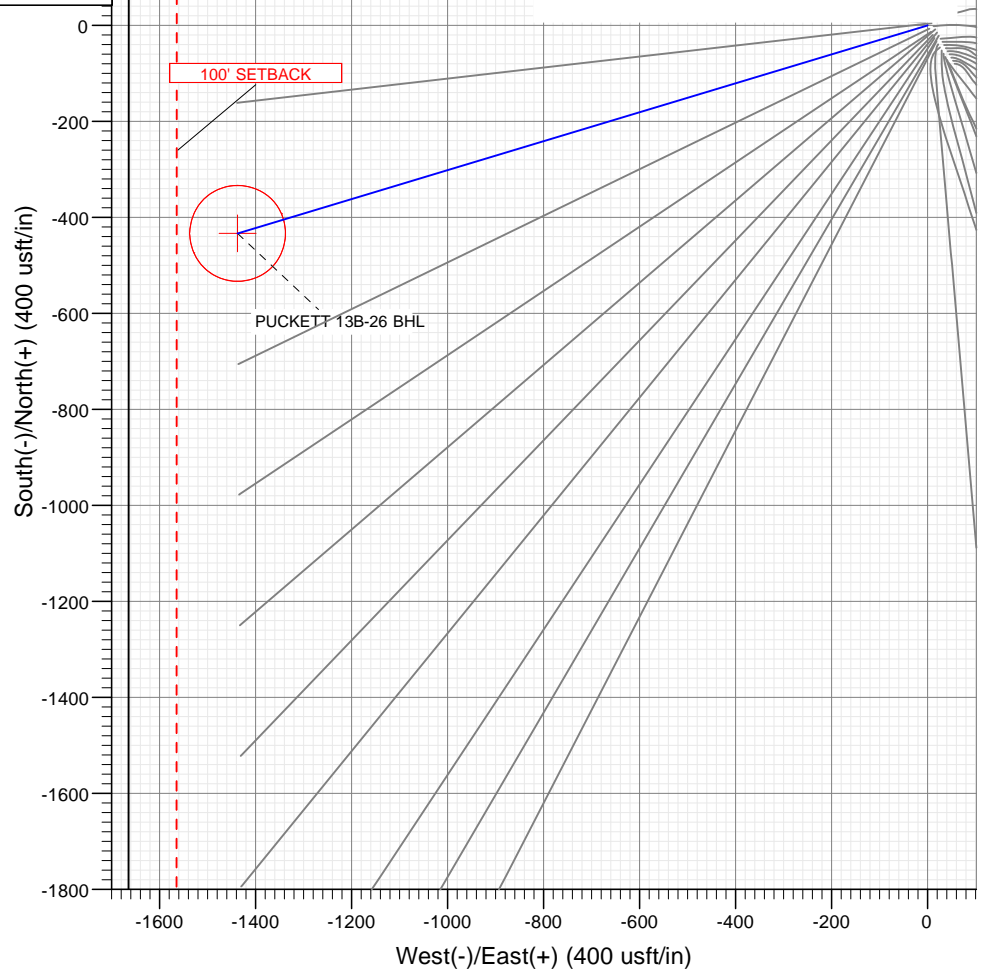
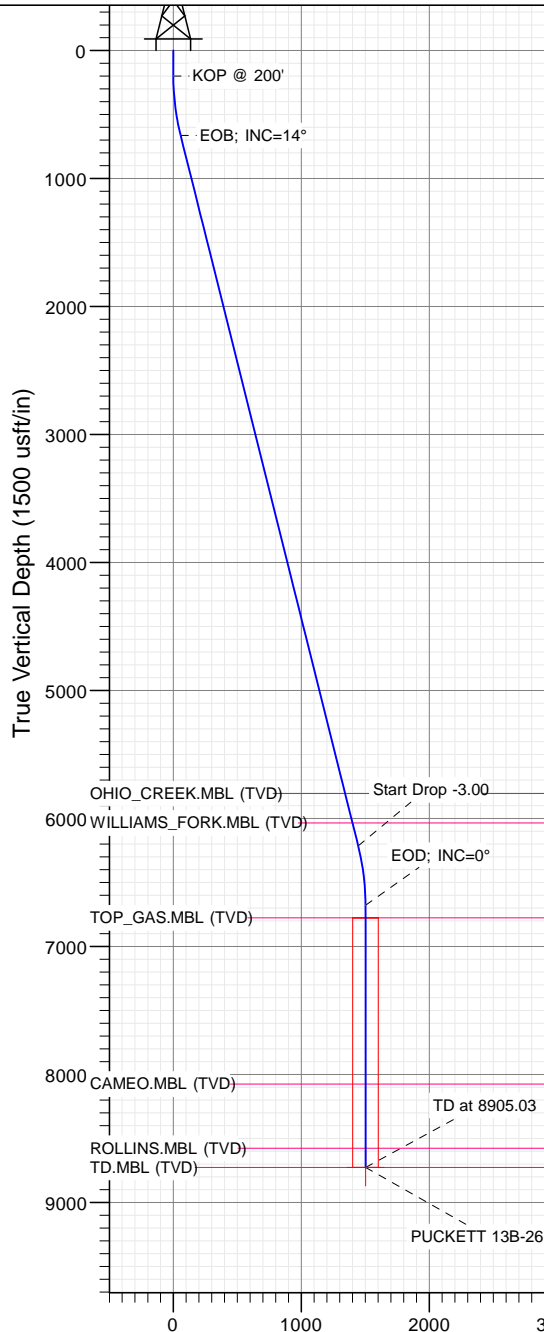
SECTION DETAILS

Sec	MD	Inc	Azi	TVD	+N/-S	+E/-W	Dleg	TFace	VSec	Target
1	0.00	0.00	0.00	0.00	0.00	0.00	0.00	0.00	0.00	
2	200.00	0.00	0.00	200.00	0.00	0.00	0.00	0.00	0.00	
3	667.74	14.03	253.23	663.08	-16.44	-54.57	3.00	253.23	56.99	
4	6388.29	14.03	253.23	6212.92	-416.62	-1382.64	0.00	0.00	1444.05	
5	6856.03	0.00	0.00	6676.00	-433.07	-1437.21	3.00	180.00	1501.04	
6	8905.03	0.00	0.00	8725.00	-433.07	-1437.21	0.00	0.00	1501.04	PUCKETT 13B-26 BHL

PLAN #1
PUCKETT 13B-26
XXX16; LR
30' KB @ 8352.00usft
Ground Level @ 8322.00
NAD 1927 - Western US
Well PUCKETT 13B-26, True North

Type	Target	Asimuth	Origin	Type	N/S	E/W	From	TVD
TD	No Target (Freehand)	253.23	Slot	0.00	0.00	0.00	0.00	0.00
Name	PUCKETT 13B-26 BHL	TVD	+N/-S	+E/-W	Latitude	Longitude		
		8725.00	-433.07	-1437.21	39.493843	-108.190206		

Project: Garfield County, CO (UTM 12N)
Site: S26-T6S-R97W (MESA F26)
Well: PUCKETT 13B-26
Wellbore: OH
Design: PLAN #1



FORMATION TOP DETAILS

TVDPath	MDPath	Formation
5805.00	5967.82	OHIO_CREEK.MBL (TVD)
6035.00	6204.90	WILLIAMS_FORK.MBL (TVD)
6776.00	6956.03	TOP_GAS.MBL (TVD)
8075.00	8255.03	CAMEO.MBL (TVD)
8575.00	8755.03	ROLLINS.MBL (TVD)
8725.00	8905.03	TD.MBL (TVD)



Azimuths to True North
Magnetic North: 9.78°

Magnetic Field
Strength: 51819.5nT
Dip Angle: 65.83°
Date: 9/23/2016
Model: HDGM

Vertical Section at 253.23° (1500 usft/in)

WELL DETAILS: PUCKETT 13B-26

+N/-S	+E/-W	Northing	Ground Level:	8322.00	Latitude	Longitude
0.00	0.00	14354544.70	Easting	2433149.70	39.495032	-108.190206

CATHEDRAL



Cathedral Energy Services

Planning Report

Database:	USA EDM 5000 Multi Users DB	Local Co-ordinate Reference:	Well PUCKETT 13B-26
Company:	Caerus Oil & Gas	TVD Reference:	30' KB @ 8352.00usft
Project:	Garfield County, CO (UTM 12N)	MD Reference:	30' KB @ 8352.00usft
Site:	S26-T6S-R97W (MESA F26)	North Reference:	True
Well:	PUCKETT 13B-26	Survey Calculation Method:	Minimum Curvature
Wellbore:	OH		
Design:	PLAN #1		

Project	Garfield County, CO (UTM 12N)		
Map System:	Universal Transverse Mercator (US Survey Feet)	System Datum:	Mean Sea Level
Geo Datum:	NAD 1927 - Western US		
Map Zone:	Zone 12N (114 W to 108 W)		

Site		S26-T6S-R97W (MESA F26)			
Site Position:		Northing:	14,354,512.70 usft	Latitude:	39.494943
From:	Map	Easting:	2,433,169.20 usft	Longitude:	-108.190140
Position Uncertainty:	0.00 usft	Slot Radius:	13-3/16"	Grid Convergence:	1.79 °

Well	PUCKETT 13B-26					
Well Position	+N/-S	0.00 usft	Northing:	14,354,544.70 usft	Latitude:	39.495032
	+E/-W	0.00 usft	Easting:	2,433,149.70 usft	Longitude:	-108.190206
Position Uncertainty		0.00 usft	Wellhead Elevation:	0.00 usft	Ground Level:	8,322.00 usft

Wellbore	OH				
Magnetics	Model Name	Sample Date	Declination	Dip Angle	Field Strength
			(°)	(°)	(nT)
	HDGM	9/23/2016	9.78	65.83	51,820

Design	PLAN #1			
Audit Notes:				
Version:	Phase:	PLAN	Tie On Depth:	0.00
Vertical Section:	Depth From (TVD)	+N/-S	+E/-W	Direction
	(usft)	(usft)	(usft)	(°)
	0.00	0.00	0.00	253.23

Plan Sections										
Measured Depth (usft)	Inclination (°)	Azimuth (°)	Vertical Depth (usft)	+N/-S (usft)	+E/-W (usft)	Dogleg Rate (°/100usft)	Build Rate (°/100usft)	Turn Rate (°/100usft)	TFO (°)	Target
0.00	0.00	0.00	0.00	0.00	0.00	0.00	0.00	0.00	0.00	
200.00	0.00	0.00	200.00	0.00	0.00	0.00	0.00	0.00	0.00	
667.74	14.03	253.23	663.08	-16.44	-54.57	3.00	3.00	0.00	253.23	
6,388.29	14.03	253.23	6,212.92	-416.62	-1,382.64	0.00	0.00	0.00	0.00	
6,856.03	0.00	0.00	6,676.00	-433.07	-1,437.21	3.00	-3.00	0.00	180.00	
8,905.03	0.00	0.00	8,725.00	-433.07	-1,437.21	0.00	0.00	0.00	0.00	PUCKETT 13B-26 BH

Cathedral Energy Services

Planning Report

Database:	USA EDM 5000 Multi Users DB	Local Co-ordinate Reference:	Well PUCKETT 13B-26
Company:	Caerus Oil & Gas	TVD Reference:	30' KB @ 8352.00usft
Project:	Garfield County, CO (UTM 12N)	MD Reference:	30' KB @ 8352.00usft
Site:	S26-T6S-R97W (MESA F26)	North Reference:	True
Well:	PUCKETT 13B-26	Survey Calculation Method:	Minimum Curvature
Wellbore:	OH		
Design:	PLAN #1		

Planned Survey

Measured Depth (usft)	Inclination (°)	Azimuth (°)	Vertical Depth (usft)	+N/-S (usft)	+E/-W (usft)	Vertical Section (usft)	Dogleg Rate (°/100usft)	Build Rate (°/100u)	Comments / Formations
0.00	0.00	0.00	0.00	0.00	0.00	0.00	0.00	0.00	
100.00	0.00	0.00	100.00	0.00	0.00	0.00	0.00	0.00	
200.00	0.00	0.00	200.00	0.00	0.00	0.00	0.00	0.00	KOP @ 200'
300.00	3.00	253.23	299.95	-0.76	-2.51	2.62	3.00	3.00	
400.00	6.00	253.23	399.63	-3.02	-10.02	10.46	3.00	3.00	
500.00	9.00	253.23	498.77	-6.78	-22.51	23.51	3.00	3.00	
600.00	12.00	253.23	597.08	-12.04	-39.96	41.74	3.00	3.00	
667.74	14.03	253.23	663.08	-16.44	-54.57	56.99	3.00	3.00	EOB; INC=14°
700.00	14.03	253.23	694.38	-18.70	-62.06	64.81	0.00	0.00	
800.00	14.03	253.23	791.39	-25.69	-85.27	89.06	0.00	0.00	
900.00	14.03	253.23	888.41	-32.69	-108.49	113.31	0.00	0.00	
1,000.00	14.03	253.23	985.42	-39.69	-131.70	137.55	0.00	0.00	
1,100.00	14.03	253.23	1,082.44	-46.68	-154.92	161.80	0.00	0.00	
1,200.00	14.03	253.23	1,179.45	-53.68	-178.14	186.05	0.00	0.00	
1,300.00	14.03	253.23	1,276.47	-60.67	-201.35	210.29	0.00	0.00	
1,400.00	14.03	253.23	1,373.49	-67.67	-224.57	234.54	0.00	0.00	
1,500.00	14.03	253.23	1,470.50	-74.66	-247.78	258.79	0.00	0.00	
1,600.00	14.03	253.23	1,567.52	-81.66	-271.00	283.04	0.00	0.00	
1,700.00	14.03	253.23	1,664.53	-88.65	-294.22	307.28	0.00	0.00	
1,800.00	14.03	253.23	1,761.55	-95.65	-317.43	331.53	0.00	0.00	
1,900.00	14.03	253.23	1,858.57	-102.65	-340.65	355.78	0.00	0.00	
2,000.00	14.03	253.23	1,955.58	-109.64	-363.86	380.02	0.00	0.00	
2,100.00	14.03	253.23	2,052.60	-116.64	-387.08	404.27	0.00	0.00	
2,200.00	14.03	253.23	2,149.61	-123.63	-410.30	428.52	0.00	0.00	
2,300.00	14.03	253.23	2,246.63	-130.63	-433.51	452.76	0.00	0.00	
2,400.00	14.03	253.23	2,343.65	-137.62	-456.73	477.01	0.00	0.00	
2,500.00	14.03	253.23	2,440.66	-144.62	-479.94	501.26	0.00	0.00	
2,600.00	14.03	253.23	2,537.68	-151.61	-503.16	525.51	0.00	0.00	
2,700.00	14.03	253.23	2,634.69	-158.61	-526.37	549.75	0.00	0.00	
2,800.00	14.03	253.23	2,731.71	-165.61	-549.59	574.00	0.00	0.00	
2,900.00	14.03	253.23	2,828.73	-172.60	-572.81	598.25	0.00	0.00	
3,000.00	14.03	253.23	2,925.74	-179.60	-596.02	622.49	0.00	0.00	
3,100.00	14.03	253.23	3,022.76	-186.59	-619.24	646.74	0.00	0.00	
3,200.00	14.03	253.23	3,119.77	-193.59	-642.45	670.99	0.00	0.00	
3,300.00	14.03	253.23	3,216.79	-200.58	-665.67	695.23	0.00	0.00	
3,400.00	14.03	253.23	3,313.80	-207.58	-688.89	719.48	0.00	0.00	
3,500.00	14.03	253.23	3,410.82	-214.57	-712.10	743.73	0.00	0.00	
3,600.00	14.03	253.23	3,507.84	-221.57	-735.32	767.97	0.00	0.00	
3,700.00	14.03	253.23	3,604.85	-228.56	-758.53	792.22	0.00	0.00	
3,800.00	14.03	253.23	3,701.87	-235.56	-781.75	816.47	0.00	0.00	
3,900.00	14.03	253.23	3,798.88	-242.56	-804.97	840.72	0.00	0.00	
4,000.00	14.03	253.23	3,895.90	-249.55	-828.18	864.96	0.00	0.00	
4,100.00	14.03	253.23	3,992.92	-256.55	-851.40	889.21	0.00	0.00	
4,200.00	14.03	253.23	4,089.93	-263.54	-874.61	913.46	0.00	0.00	
4,300.00	14.03	253.23	4,186.95	-270.54	-897.83	937.70	0.00	0.00	
4,400.00	14.03	253.23	4,283.96	-277.53	-921.05	961.95	0.00	0.00	
4,500.00	14.03	253.23	4,380.98	-284.53	-944.26	986.20	0.00	0.00	
4,600.00	14.03	253.23	4,478.00	-291.52	-967.48	1,010.44	0.00	0.00	
4,700.00	14.03	253.23	4,575.01	-298.52	-990.69	1,034.69	0.00	0.00	
4,800.00	14.03	253.23	4,672.03	-305.52	-1,013.91	1,058.94	0.00	0.00	
4,900.00	14.03	253.23	4,769.04	-312.51	-1,037.12	1,083.19	0.00	0.00	
5,000.00	14.03	253.23	4,866.06	-319.51	-1,060.34	1,107.43	0.00	0.00	

Cathedral Energy Services

Planning Report

Database:	USA EDM 5000 Multi Users DB	Local Co-ordinate Reference:	Well PUCKETT 13B-26
Company:	Caerus Oil & Gas	TVD Reference:	30' KB @ 8352.00usft
Project:	Garfield County, CO (UTM 12N)	MD Reference:	30' KB @ 8352.00usft
Site:	S26-T6S-R97W (MESA F26)	North Reference:	True
Well:	PUCKETT 13B-26	Survey Calculation Method:	Minimum Curvature
Wellbore:	OH		
Design:	PLAN #1		

Planned Survey									
Measured Depth (usft)	Inclination (°)	Azimuth (°)	Vertical Depth (usft)	+N/-S (usft)	+E/-W (usft)	Vertical Section (usft)	Dogleg Rate (°/100usft)	Build Rate (°/100u)	Comments / Formations
5,100.00	14.03	253.23	4,963.08	-326.50	-1,083.56	1,131.68	0.00	0.00	
5,200.00	14.03	253.23	5,060.09	-333.50	-1,106.77	1,155.93	0.00	0.00	
5,300.00	14.03	253.23	5,157.11	-340.49	-1,129.99	1,180.17	0.00	0.00	
5,400.00	14.03	253.23	5,254.12	-347.49	-1,153.20	1,204.42	0.00	0.00	
5,500.00	14.03	253.23	5,351.14	-354.48	-1,176.42	1,228.67	0.00	0.00	
5,600.00	14.03	253.23	5,448.15	-361.48	-1,199.64	1,252.91	0.00	0.00	
5,700.00	14.03	253.23	5,545.17	-368.47	-1,222.85	1,277.16	0.00	0.00	
5,800.00	14.03	253.23	5,642.19	-375.47	-1,246.07	1,301.41	0.00	0.00	
5,900.00	14.03	253.23	5,739.20	-382.47	-1,269.28	1,325.66	0.00	0.00	
5,967.82	14.03	253.23	5,805.00	-387.21	-1,285.03	1,342.10	0.00	0.00	OHIO_CREEK.MBL (TVD)
6,000.00	14.03	253.23	5,836.22	-389.46	-1,292.50	1,349.90	0.00	0.00	
6,100.00	14.03	253.23	5,933.23	-396.46	-1,315.72	1,374.15	0.00	0.00	
6,200.00	14.03	253.23	6,030.25	-403.45	-1,338.93	1,398.40	0.00	0.00	
6,204.90	14.03	253.23	6,035.00	-403.80	-1,340.07	1,399.58	0.00	0.00	WILLIAMS_FORK.MBL (TVD)
6,300.00	14.03	253.23	6,127.27	-410.45	-1,362.15	1,422.64	0.00	0.00	
6,388.29	14.03	253.23	6,212.92	-416.62	-1,382.64	1,444.05	0.00	0.00	Start Drop -3.00
6,400.00	13.68	253.23	6,224.29	-417.43	-1,385.33	1,446.86	3.00	-3.00	
6,500.00	10.68	253.23	6,322.03	-423.52	-1,405.53	1,467.95	3.00	-3.00	
6,600.00	7.68	253.23	6,420.74	-428.12	-1,420.81	1,483.91	3.00	-3.00	
6,700.00	4.68	253.23	6,520.14	-431.23	-1,431.11	1,494.67	3.00	-3.00	
6,800.00	1.68	253.23	6,619.98	-432.83	-1,436.43	1,500.22	3.00	-3.00	
6,856.03	0.00	0.00	6,676.00	-433.07	-1,437.21	1,501.04	3.00	-3.00	EOD; INC=0°
6,900.00	0.00	0.00	6,719.97	-433.07	-1,437.21	1,501.04	0.00	0.00	
6,956.03	0.00	0.00	6,776.00	-433.07	-1,437.21	1,501.04	0.00	0.00	TOP_GAS.MBL (TVD)
7,000.00	0.00	0.00	6,819.97	-433.07	-1,437.21	1,501.04	0.00	0.00	
7,100.00	0.00	0.00	6,919.97	-433.07	-1,437.21	1,501.04	0.00	0.00	
7,200.00	0.00	0.00	7,019.97	-433.07	-1,437.21	1,501.04	0.00	0.00	
7,300.00	0.00	0.00	7,119.97	-433.07	-1,437.21	1,501.04	0.00	0.00	
7,400.00	0.00	0.00	7,219.97	-433.07	-1,437.21	1,501.04	0.00	0.00	
7,500.00	0.00	0.00	7,319.97	-433.07	-1,437.21	1,501.04	0.00	0.00	
7,600.00	0.00	0.00	7,419.97	-433.07	-1,437.21	1,501.04	0.00	0.00	
7,700.00	0.00	0.00	7,519.97	-433.07	-1,437.21	1,501.04	0.00	0.00	
7,800.00	0.00	0.00	7,619.97	-433.07	-1,437.21	1,501.04	0.00	0.00	
7,900.00	0.00	0.00	7,719.97	-433.07	-1,437.21	1,501.04	0.00	0.00	
8,000.00	0.00	0.00	7,819.97	-433.07	-1,437.21	1,501.04	0.00	0.00	
8,100.00	0.00	0.00	7,919.97	-433.07	-1,437.21	1,501.04	0.00	0.00	
8,200.00	0.00	0.00	8,019.97	-433.07	-1,437.21	1,501.04	0.00	0.00	
8,255.03	0.00	0.00	8,075.00	-433.07	-1,437.21	1,501.04	0.00	0.00	CAMEO.MBL (TVD)
8,300.00	0.00	0.00	8,119.97	-433.07	-1,437.21	1,501.04	0.00	0.00	
8,400.00	0.00	0.00	8,219.97	-433.07	-1,437.21	1,501.04	0.00	0.00	
8,500.00	0.00	0.00	8,319.97	-433.07	-1,437.21	1,501.04	0.00	0.00	
8,600.00	0.00	0.00	8,419.97	-433.07	-1,437.21	1,501.04	0.00	0.00	
8,700.00	0.00	0.00	8,519.97	-433.07	-1,437.21	1,501.04	0.00	0.00	
8,755.03	0.00	0.00	8,575.00	-433.07	-1,437.21	1,501.04	0.00	0.00	ROLLINS.MBL (TVD)
8,800.00	0.00	0.00	8,619.97	-433.07	-1,437.21	1,501.04	0.00	0.00	
8,900.00	0.00	0.00	8,719.97	-433.07	-1,437.21	1,501.04	0.00	0.00	
8,905.03	0.00	0.00	8,725.00	-433.07	-1,437.21	1,501.04	0.00	0.00	TD at 8905.03 - TD.MBL (TVD)

Cathedral Energy Services

Planning Report

Database:	USA EDM 5000 Multi Users DB	Local Co-ordinate Reference:	Well PUCKETT 13B-26
Company:	Caerus Oil & Gas	TVD Reference:	30' KB @ 8352.00usft
Project:	Garfield County, CO (UTM 12N)	MD Reference:	30' KB @ 8352.00usft
Site:	S26-T6S-R97W (MESA F26)	North Reference:	True
Well:	PUCKETT 13B-26	Survey Calculation Method:	Minimum Curvature
Wellbore:	OH		
Design:	PLAN #1		

Targets									
Target Name									
- hit/miss target	Dip Angle	Dip Dir.	TVD	+N/-S	+E/-W	Northing	Easting	Latitude	Longitude
- Shape	(°)	(°)	(usft)	(usft)	(usft)	(usft)	(usft)		
PUCKETT 13B-26 BHL	0.00	0.00	8,725.00	-433.07	-1,437.21	14,354,067.00	2,431,726.70	39.493843	-108.195296
- plan hits target center									
- Circle (radius 100.00)									

Formations						
Measured Depth	Vertical Depth	Name	Lithology	Dip	Dip Direction	
(usft)	(usft)			(°)	(°)	
5,967.82	5,805.00	OHIO_CREEK.MBL (TVD)				
6,204.90	6,035.00	WILLIAMS_FORK.MBL (TVD)				
6,956.03	6,776.00	TOP_GAS.MBL (TVD)				
8,255.03	8,075.00	CAMEO.MBL (TVD)				
8,755.03	8,575.00	ROLLINS.MBL (TVD)				
8,905.03	8,725.00	TD.MBL (TVD)				

Plan Annotations					
Measured Depth	Vertical Depth	Local Coordinates			
(usft)	(usft)	+N/-S (usft)	+E/-W (usft)	Comment	
200.00	200.00	0.00	0.00	KOP @ 200'	
667.74	663.08	-16.44	-54.57	EOB; INC=14°	
6,388.29	6,212.92	-416.62	-1,382.64	Start Drop -3.00	
6,856.03	6,676.00	-433.07	-1,437.21	EOD; INC=0°	
8,905.03	8,725.00	-433.07	-1,437.21	TD at 8905.03	