

SlimPulse - Gamma Ray
1in/100ft Measured Depth
Recorded Mode, Composite Log

Schlumberger

Recorded Mode, Composite Log

Company: Noble Energy Inc.

Well: NUGENT LD06-655

Field: Wildcat

County: Weld

State: Colorado

Country: United States of America

Section: 5 UWID: 05-123-40808

Township: 9N Rig Name: H&P 517

Range: 58W Rig Type: Land Rig - Top Drive

FL: NAD83 Colorado State Plane, Northern Zone, US Feet

FL1: Northing: 1,531,566;373 ftUS

FL2: Easting: 3,448,532.706 ftUS

Log Measured From: - Drill Floor: 4791.00 ft

Ground Level: 4761.00 ft

Permanent Datum: - Mean Sea Level

Acquisition Dates: 31-Jul-2016 -- 05-Aug-2016

Log Interval: 1938.00 ftMD to 16119.00 ftMD

Index Types: Measured Depth

Index Scales: 1:600 2" / 100', 1:1200 1" / 100'

Depth Source: Driller's Depth

Depth Sensor: DES

Print Type: Final

Spud Date: 31-JUL-2016

Other Services:

Directional Drilling

Direction and Inclination

Disclaimer

THE USE OF AND RELIANCE UPON THIS RECORDED-DATA BY THE HEREIN NAMED COMPANY (AND ANY OF ITS AFFILIATES, PARTNERS, REPRESENTATIVES, AGENTS, CONSULTANTS AND EMPLOYEES) IS SUBJECT TO THE TERMS AND CONDITIONS AGREED UPON BETWEEN SCHLUMBERGER AND THE COMPANY, INCLUDING: (a) RESTRICTIONS ON USE OF THE RECORDED-DATA; (b) DISCLAIMERS AND WAIVERS OF WARRANTIES AND REPRESENTATIONS REGARDING COMPANY'S USE AND RELIANCE UPON THE RECORDED-DATA; AND (c) CUSTOMER'S FULL AND SOLE RESPONSIBILITY FOR ANY INFERENCE DRAWN OR DECISION MADE IN CONNECTION WITH THE USE OF THIS RECORDED-DATA.

Contents

- Header
- Disclaimer
- Contents
- Composite1
 - Integration Summary
 - Software Version
 - Composite Summary
 - Log (2MD EOW)
 - Parameter Listing
- Tail

Composite 1

Software Version

Acquisition System

Maxwell 2016 SP2

Version

6.2.64464.3100

Composite Summary

Run Name	Pass Objective	Direction	Top	Bottom	Start	Stop	Include Parallel Data
RUN001	Drilling	Down	1937.83 ft	5999.92 ft	31-Jul-2016 7:30:26 PM	01-Aug-2016 6:35:30 PM	Yes
RUN002	Drilling	Down	5999.08 ft	6283.33 ft	02-Aug-2016 12:48:24 AM	02-Aug-2016 9:42:54 AM	Yes
RUN003	Drilling	Down	6282.92 ft	16118.92 ft	02-Aug-2016 9:42:59 AM	05-Aug-2016 6:32:21 AM	Yes

All depths are referenced to toolstring zero

Log

Company:Noble Energy Inc. Well:NUGENT LD06-655
Composite 1:S403

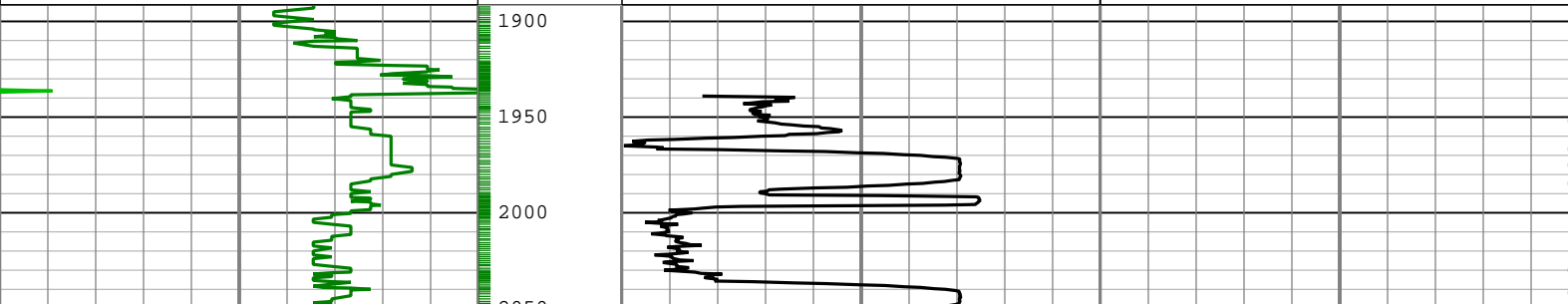
Description: SlimPulse Gamma Ray 1 Format: Log (2MD EOW) Index Scale: 1 in per 100 ft Index Unit: ft Index Type: Measured Depth Creation Date: 05-Aug-2016 13:30:10

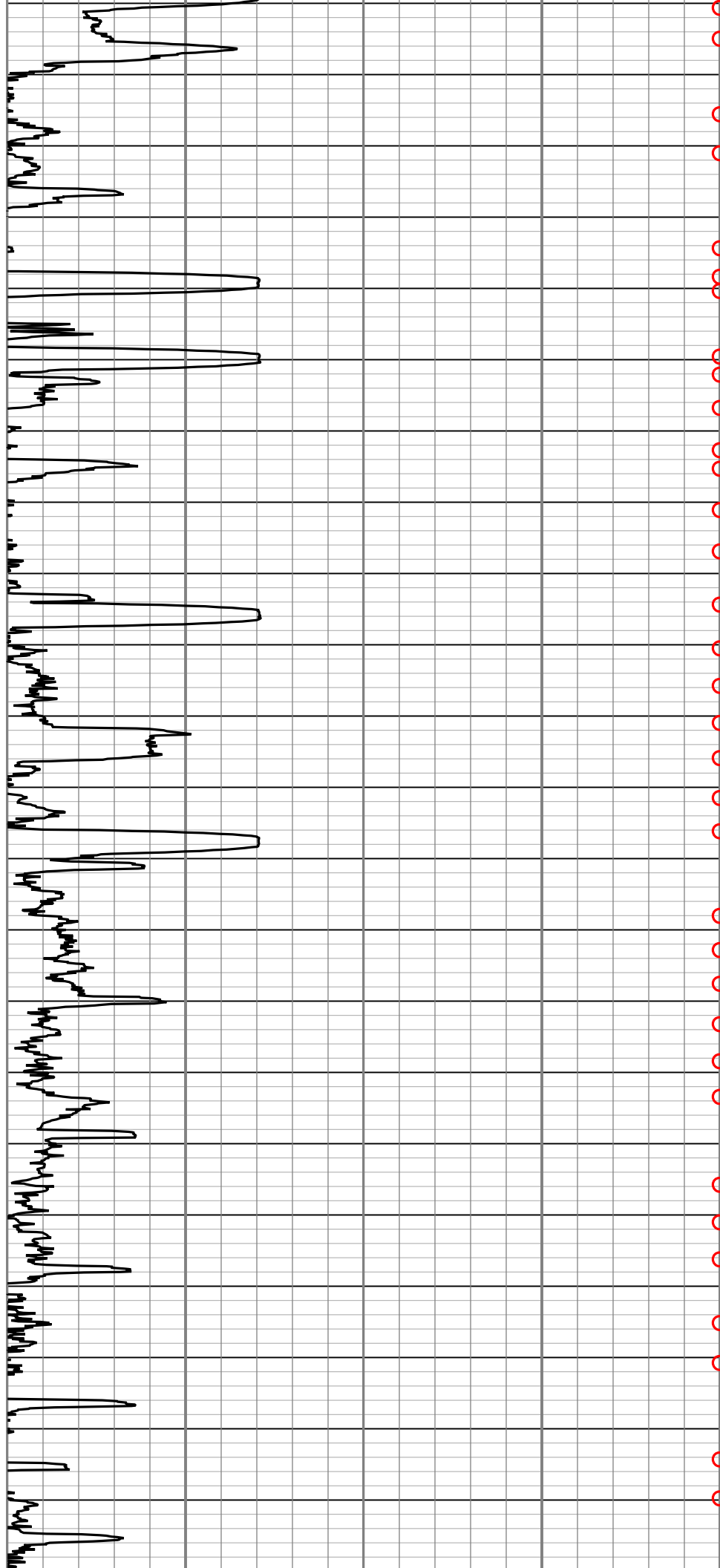
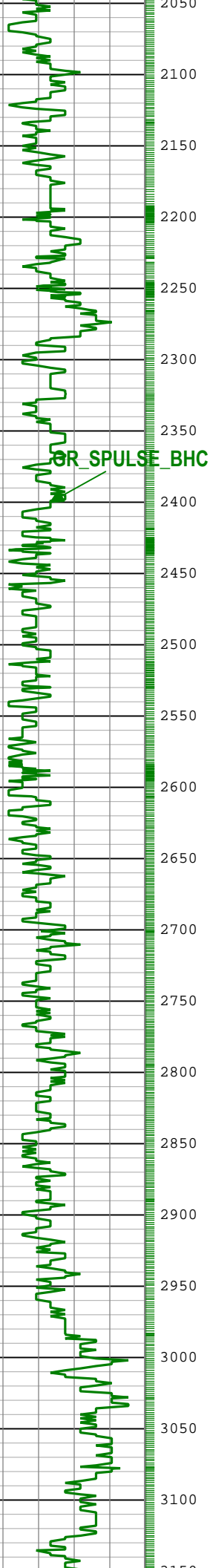
└ TICKS_GR - Gamma Ray Tick Marks SlimPulse[1] RM

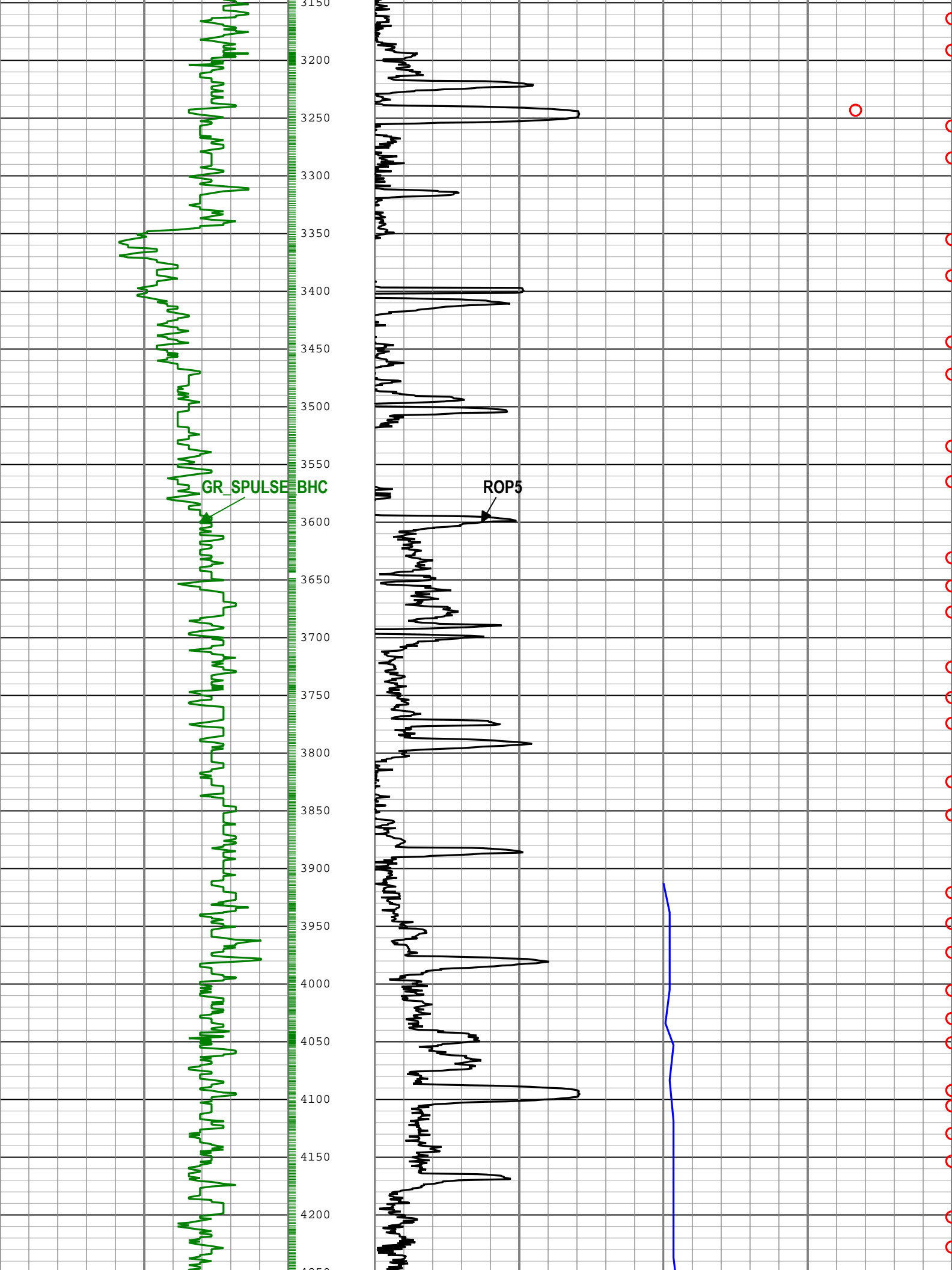
Gamma Ray (GR_SPULSE_BHC) SlimPulse[1] RM		
0	gAPI	150
Gamma Ray (GR_SPULSE_BHC) SlimPulse[1] RM		
150	gAPI	300
Gamma Ray (GR_SPULSE_BHC) SlimPulse[1] RM		
300	gAPI	450
Gamma Ray (GR_SPULSE_BHC) SlimPulse[1] RM		
450	gAPI	600
Gamma Ray (GR_SPULSE_BHC) SlimPulse[1] RM		
600	gAPI	750

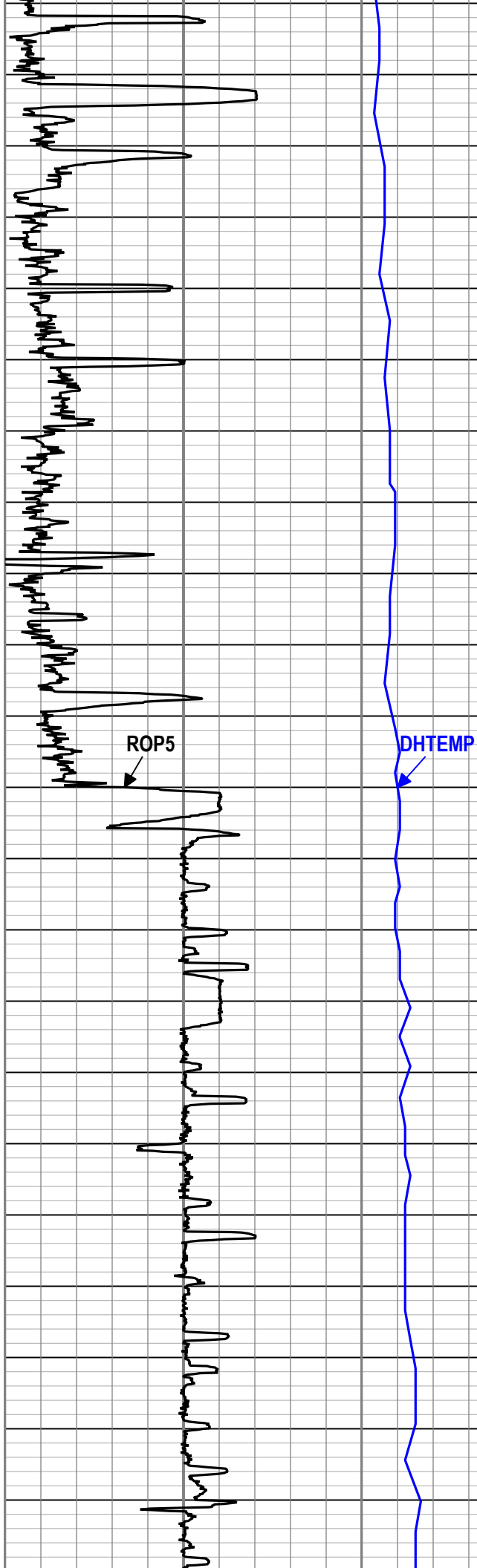
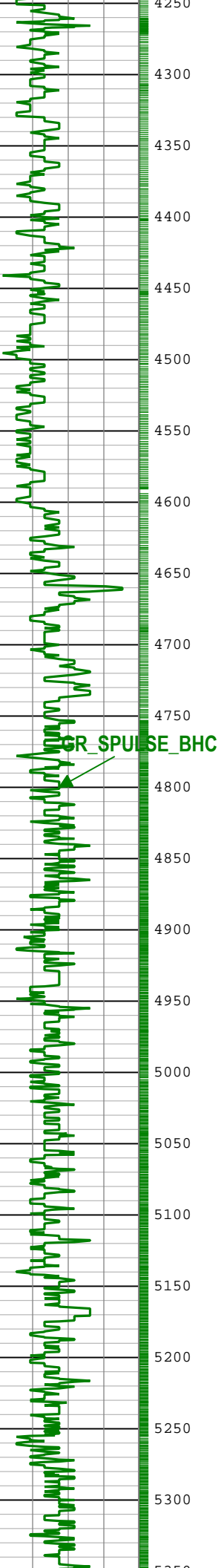
Rate of penetration averaged over the last 5 ft (1.5 m) (ROP5) RT		
500	ft/h	0

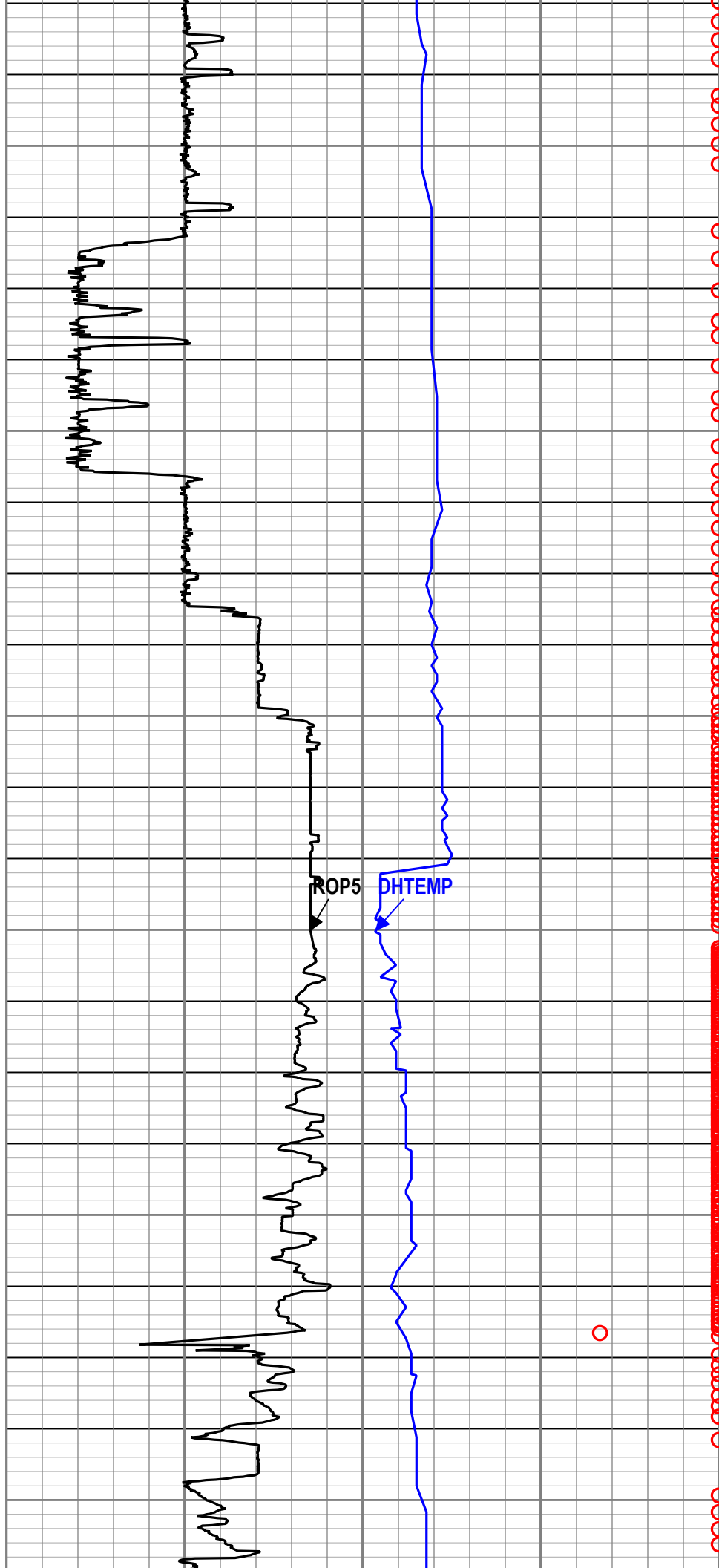
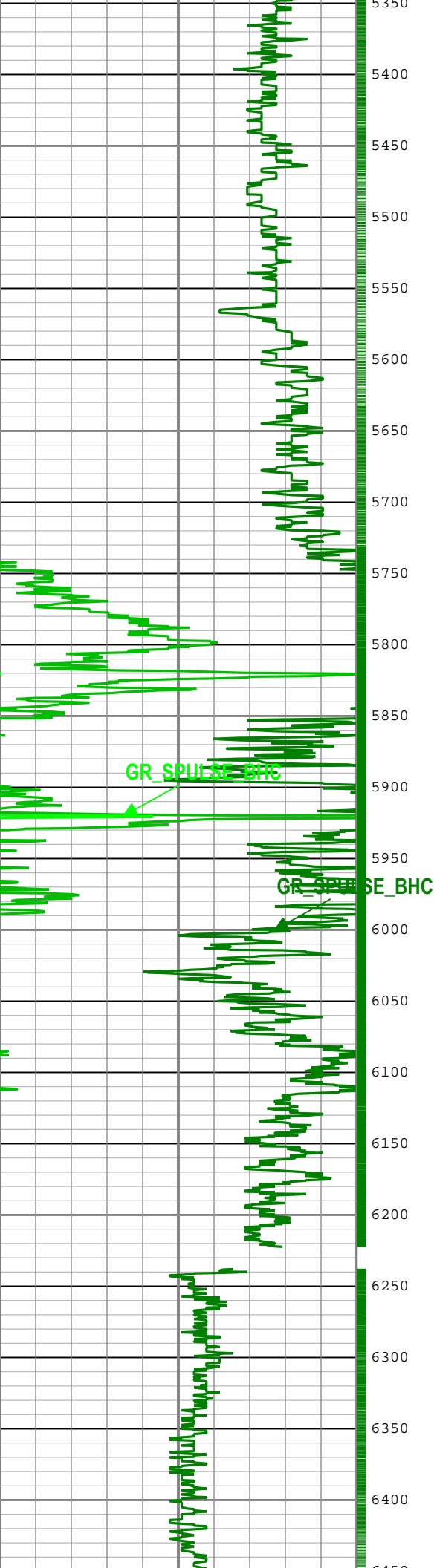
Tool Temperature (DHTEMP) SlimPulse[1] RM		
150	degF	275
Shock Risk (SHKRSK_RT) SlimPulse[1] RT		
0		0

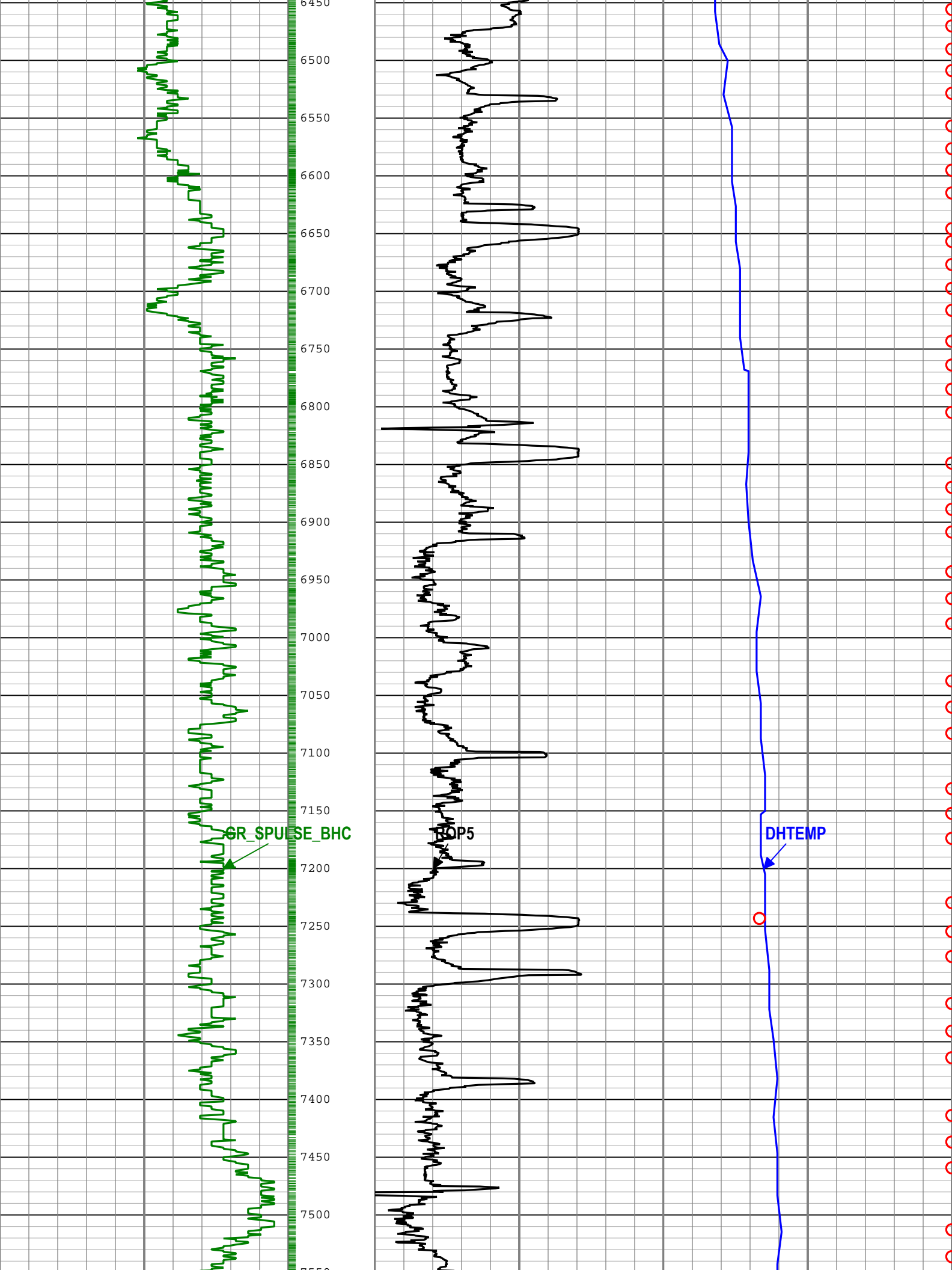


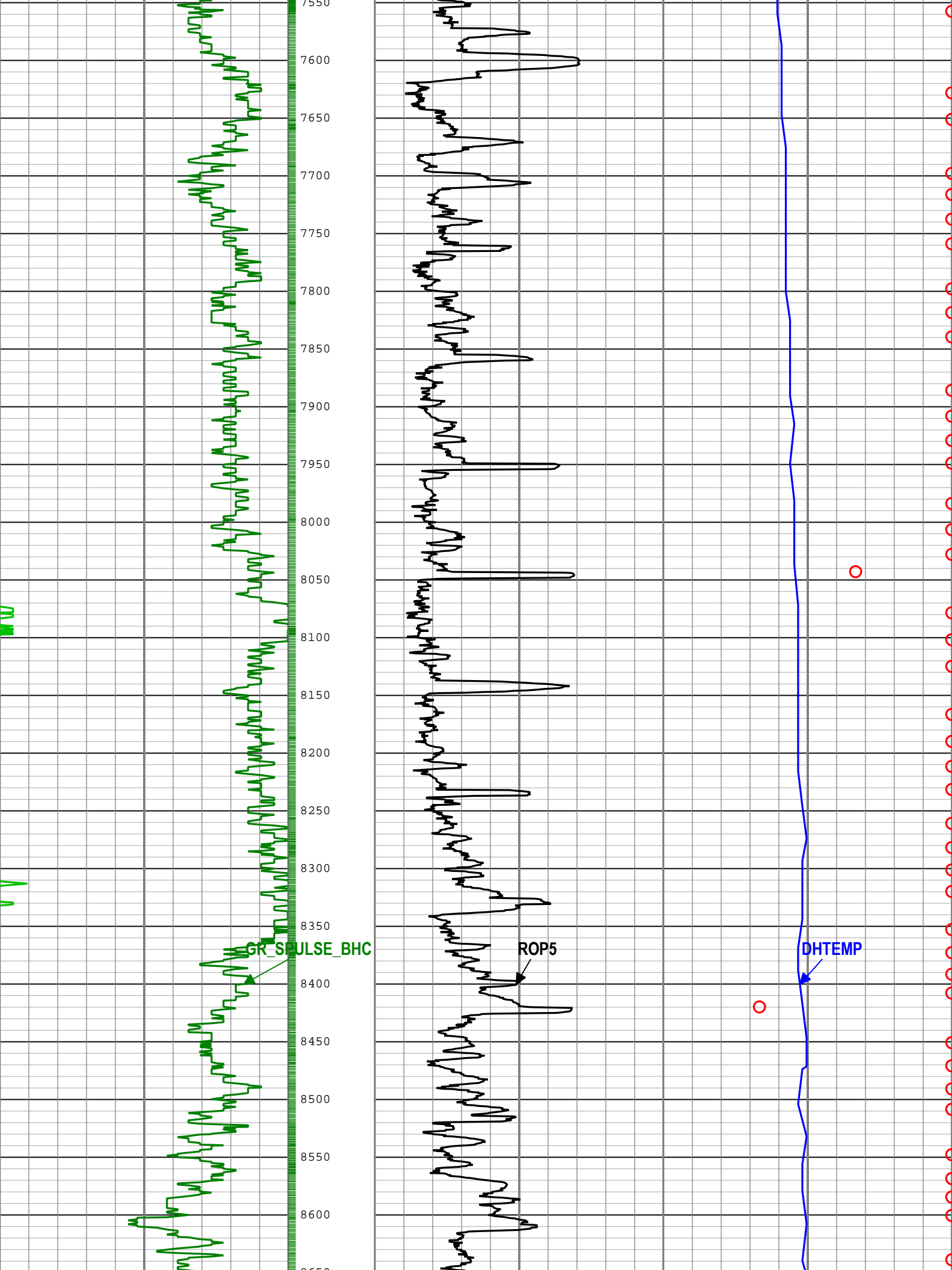


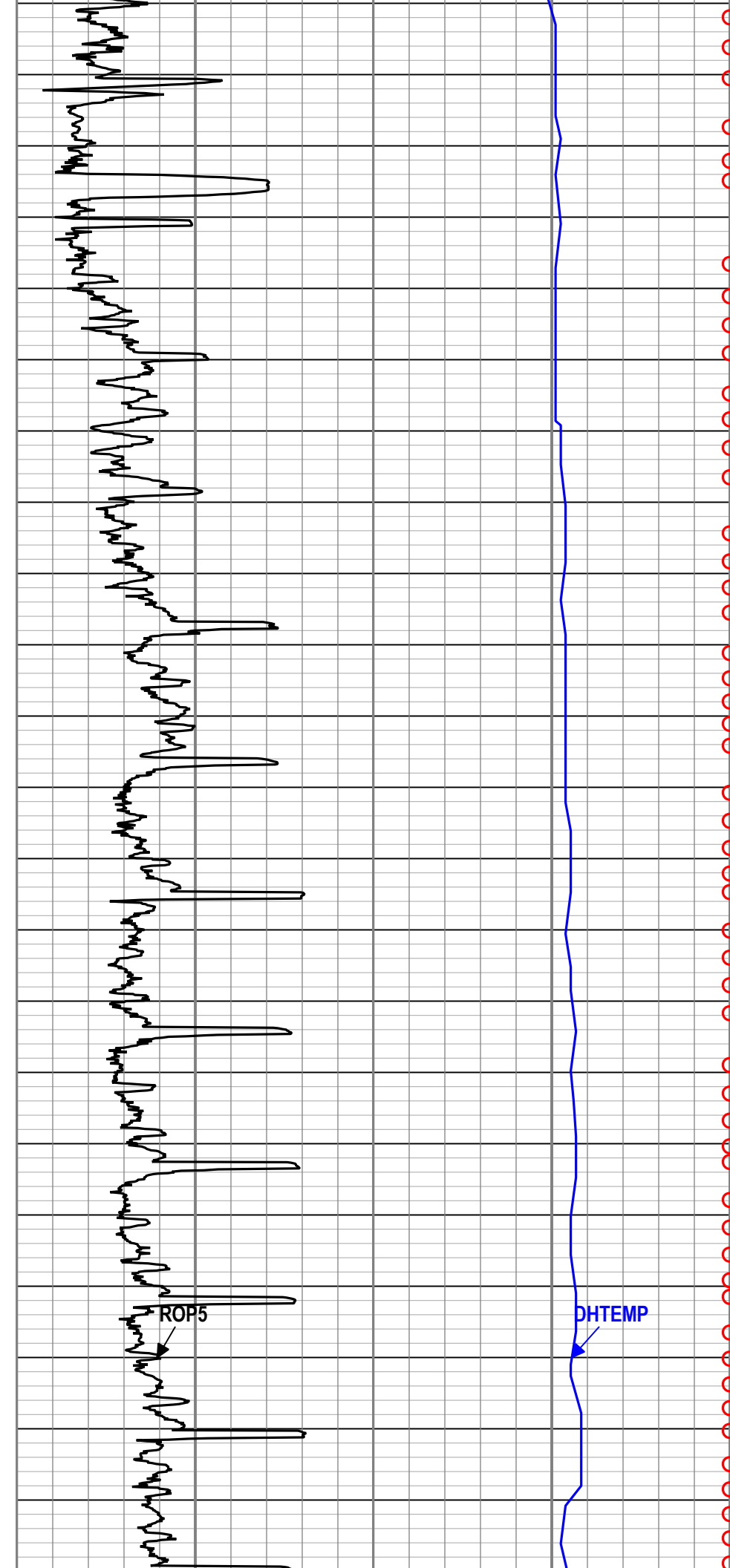
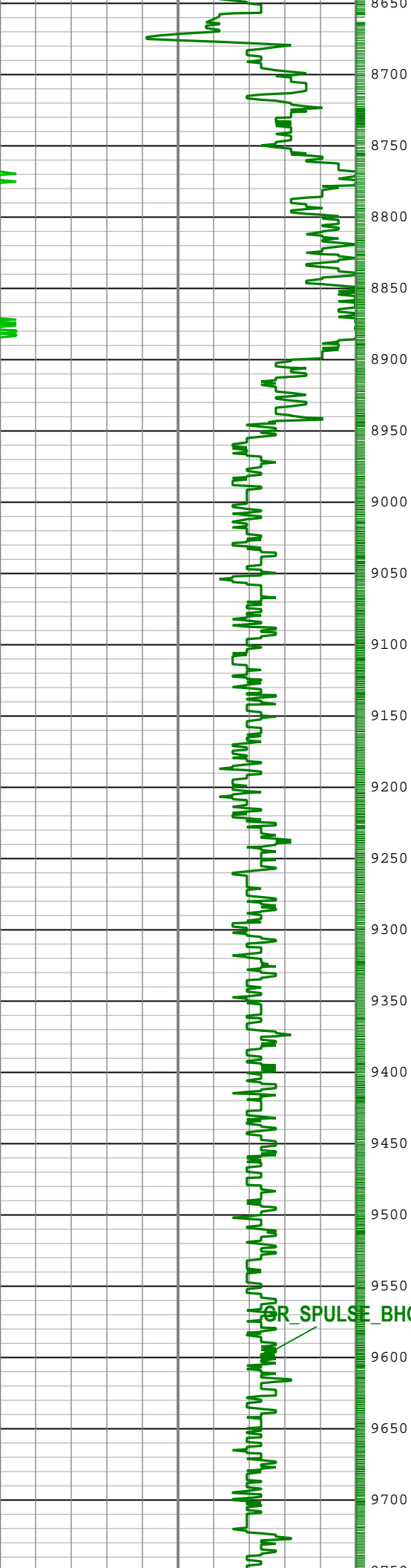


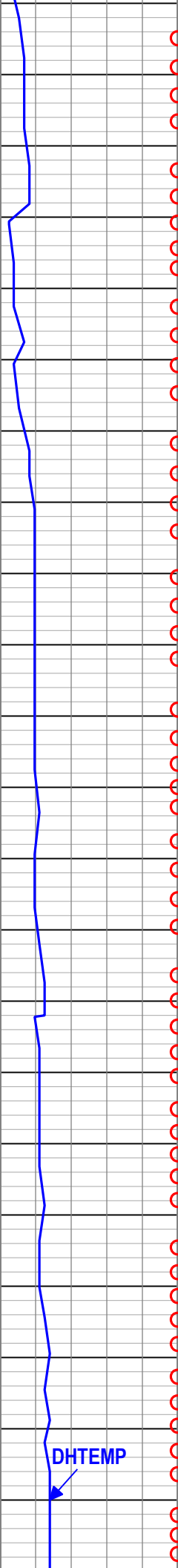
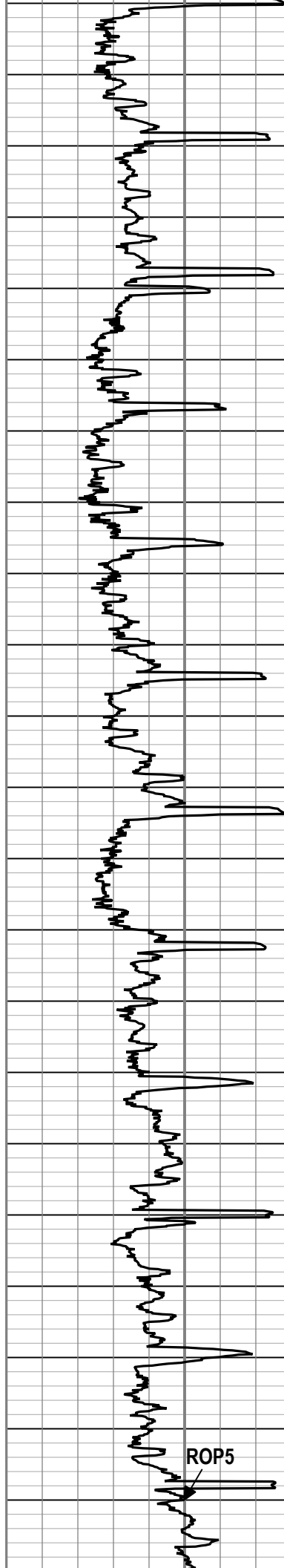
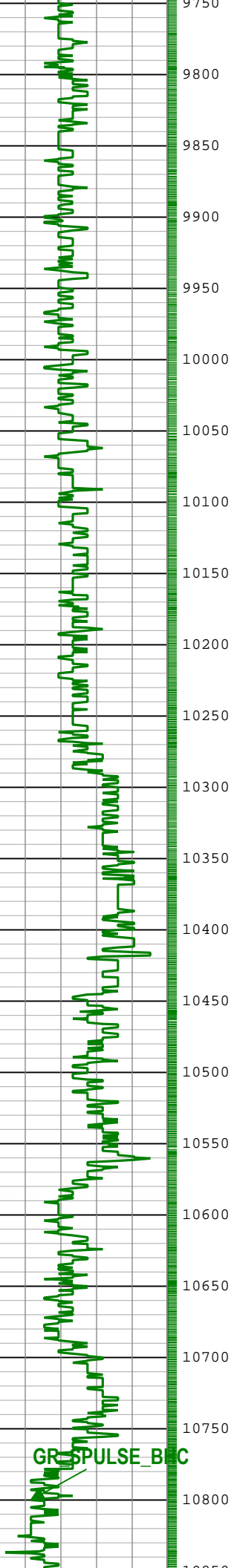


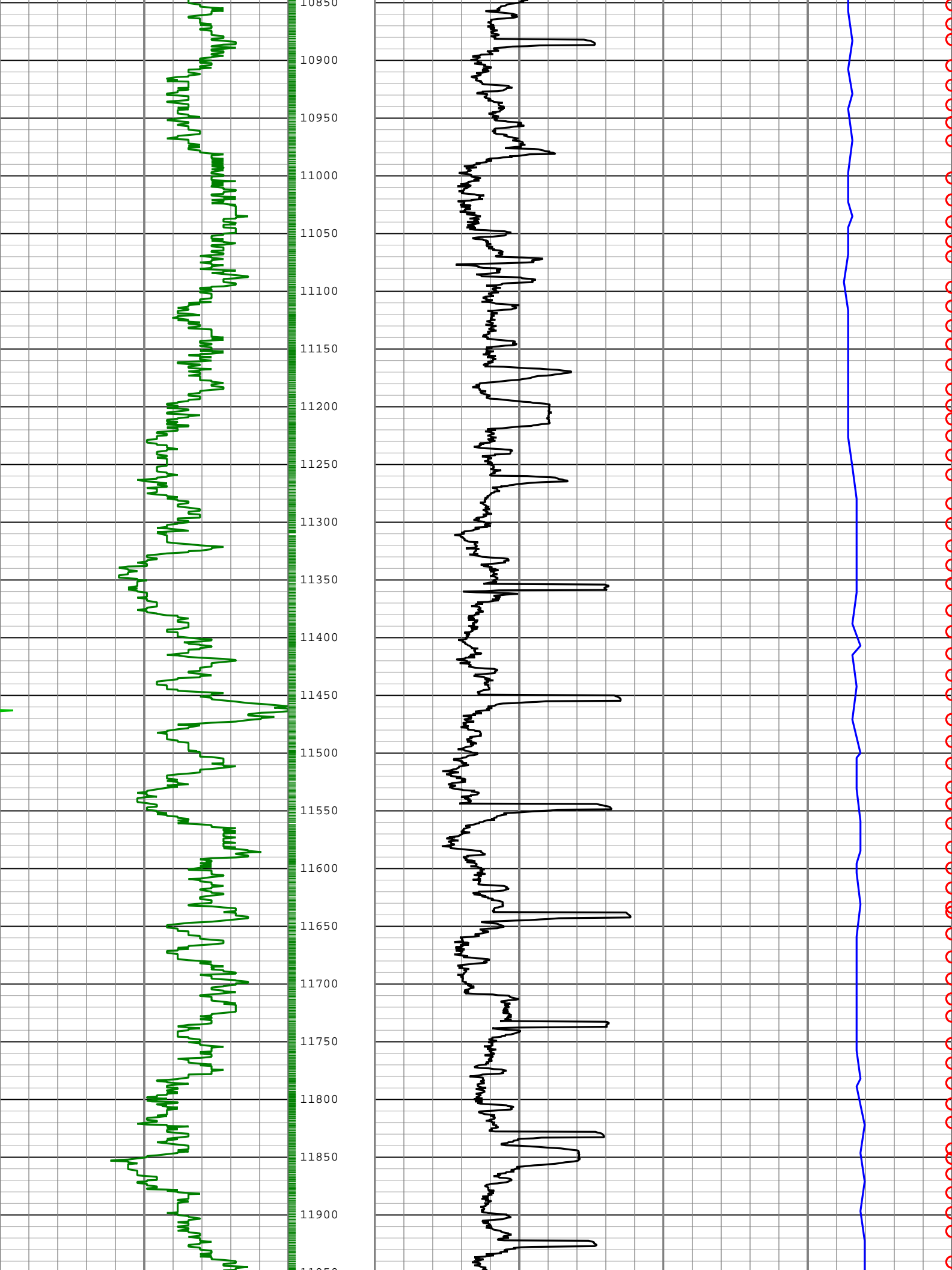


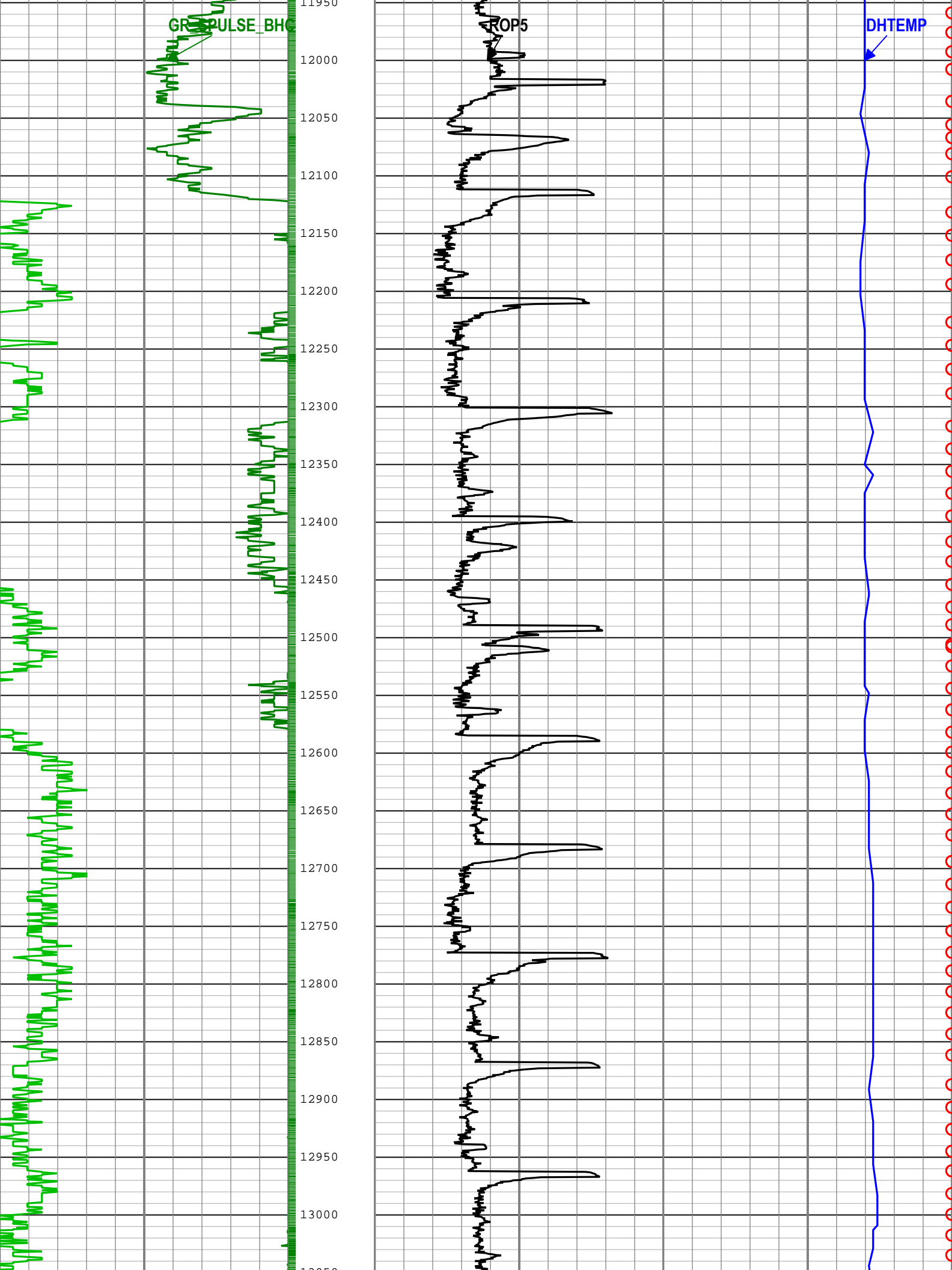


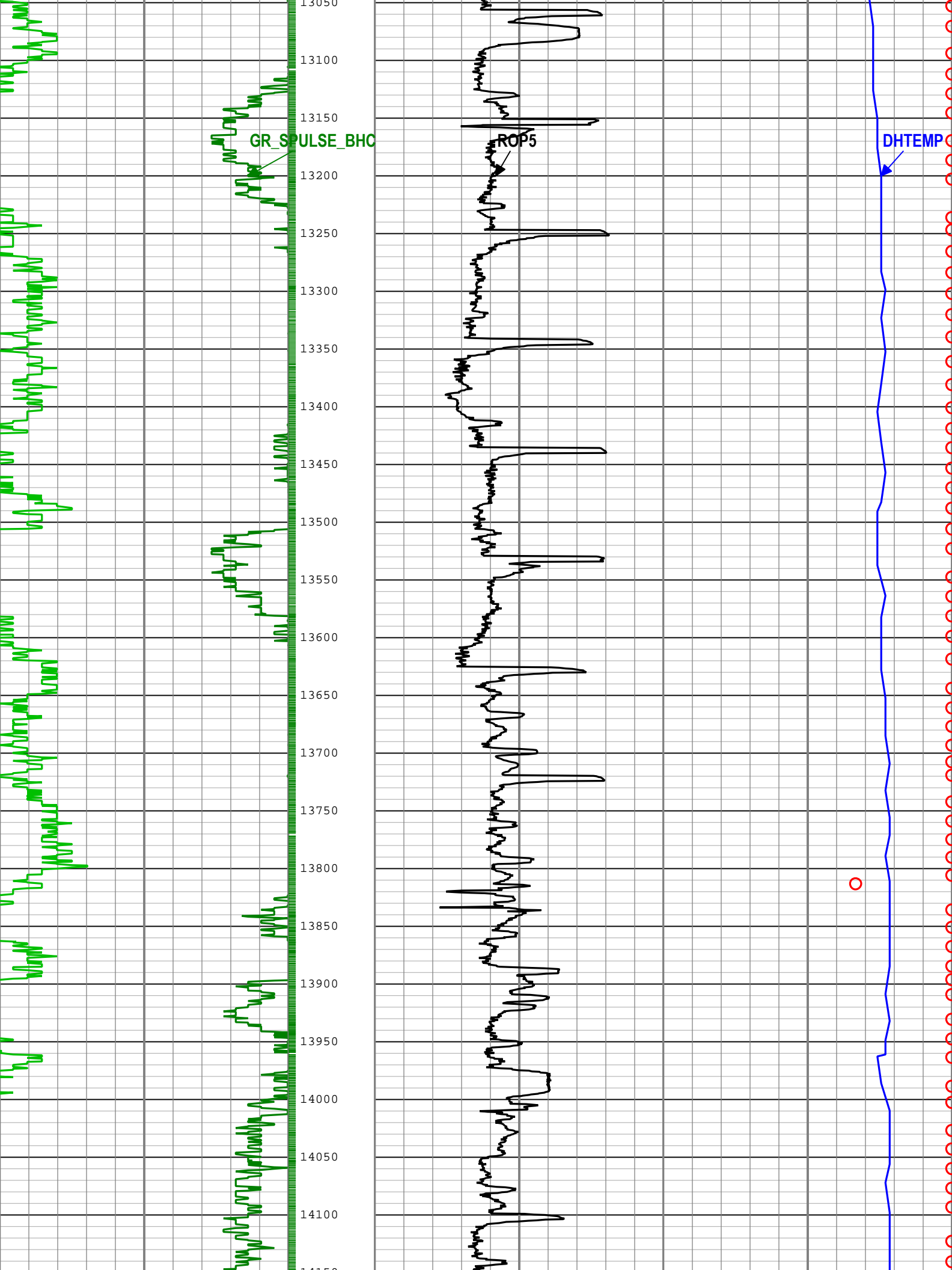


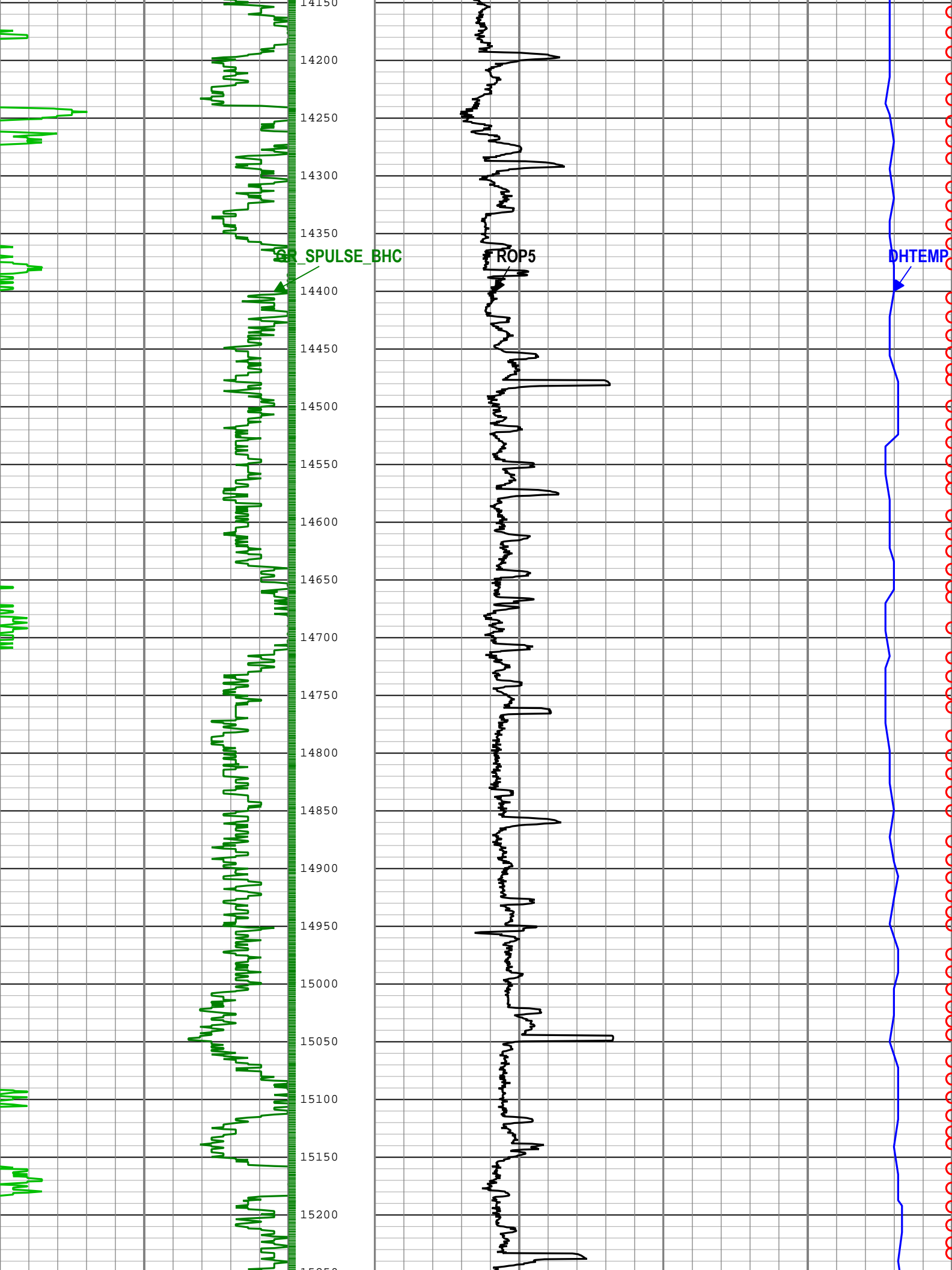


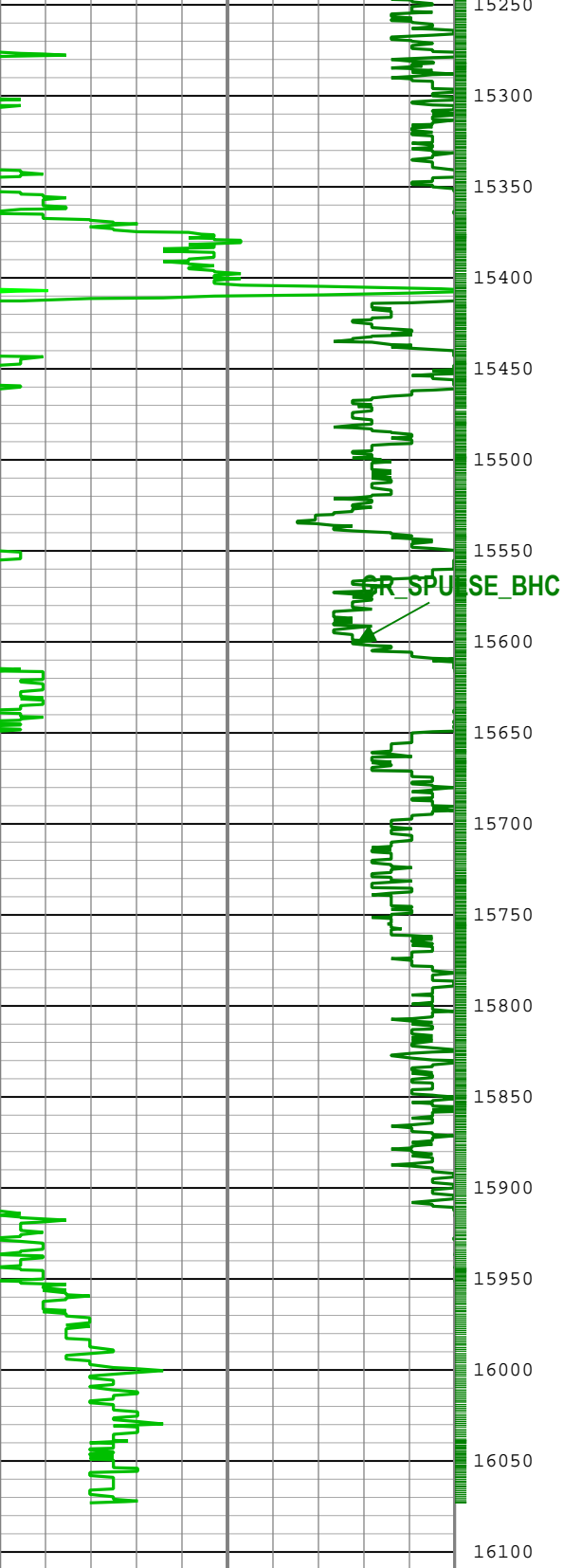












Gamma Ray (GR_SPULSE_BHC) SlimPulse[1] RM

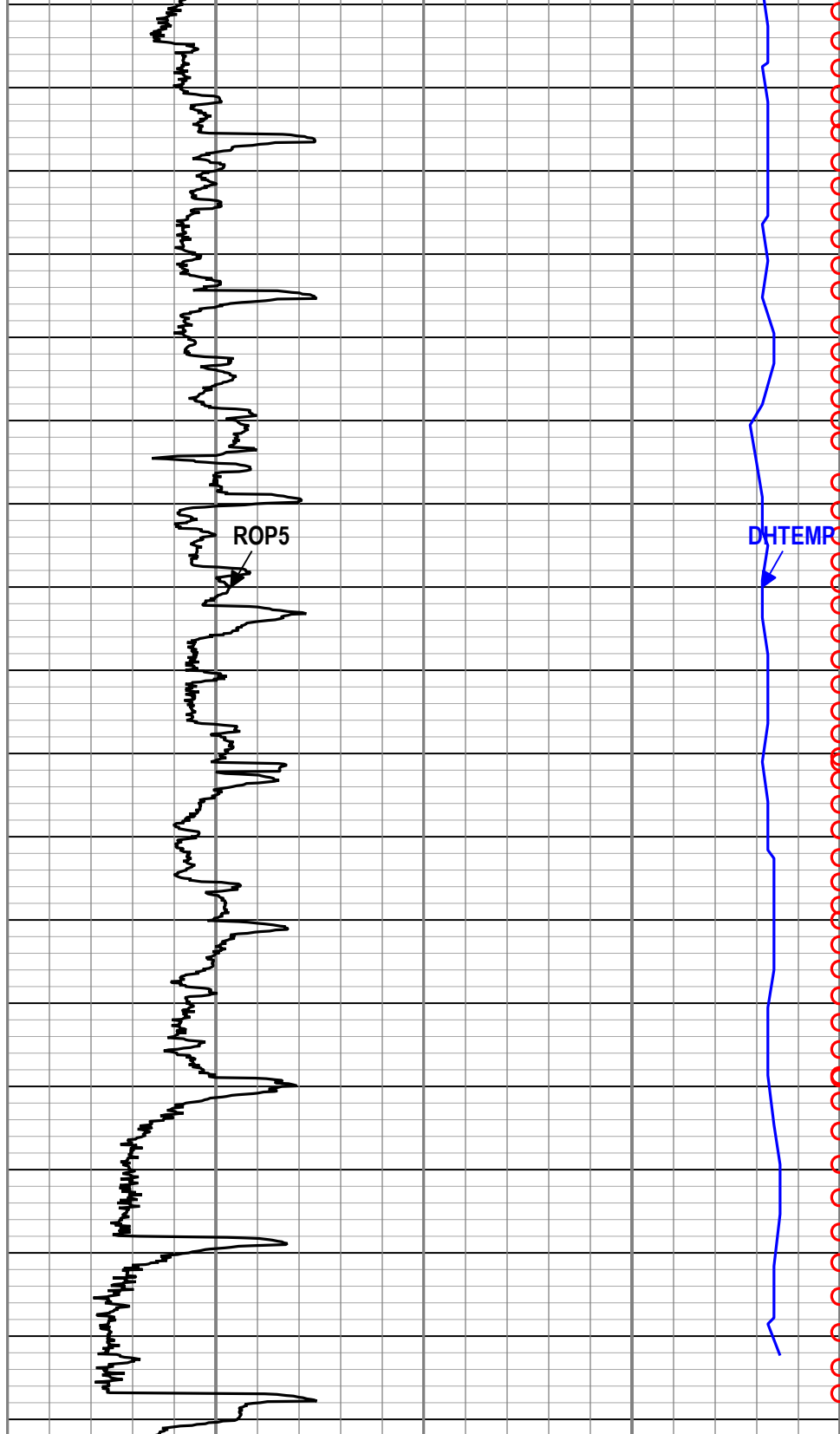
0 gAPI 150

Gamma Ray (GR_SPULSE_BHC) SlimPulse[1] RM

150 gAPI 300

Gamma Ray (GR_SPULSE_BHC) SlimPulse[1] RM

300 gAPI 450



Rate of penetration averaged over the last 5 ft
(1.5 m) (ROP5) RT

500 ft/h 0

Tool Temperature (DHTEMP) SlimPulse[1] RM

150 degF 275

Shock Risk (SHKRSK_RT) SlimPulse[1] RT

3 0

Gamma Ray (GR_SPULSE_BHC) SlimPulse[1] RM		
450	gAPI	600
Gamma Ray (GR_SPULSE_BHC) SlimPulse[1] RM		
600	gAPI	750

└─ TICKS_GR - Gamma Ray Tick Marks SlimPulse[1] RM

Description: SlimPulse Gamma Ray 1 Format: Log (2MD EOW) Index Scale: 1 in per 100 ft Index Unit: ft Index Type: Measured Depth Creation Date: 05-Aug-2016 13:30:10

Channel Processing Parameters

RUN001: Parameters

Parameter	Description	Tool	Value	Unit
BS	Bit Size	DNMSESSION	Depth Zoned	in
DFD	Drilling Fluid Density	Borehole	10.05	lbm/gal
GR_SRC	GR Source Selection	SPULSE-GEN	GAMMA_EXT	

RUN001Depth Zoned Parameters

Parameter	Value	Start (ft)	Stop (ft)
BS	12.25	1892	1938
BS	8.5	1938	5999.92

All depth are actual.

RUN002: Parameters

Parameter	Description	Tool	Value	Unit
BS	Bit Size	DNMSESSION	8.5	in
DFD	Drilling Fluid Density	Borehole	10	lbm/gal
GR_SRC	GR Source Selection	SPULSE-GEN	GAMMA_EXT	

RUN003: Parameters

Parameter	Description	Tool	Value	Unit
BS	Bit Size	DNMSESSION	8.5	in
DFD	Drilling Fluid Density	Borehole	10	lbm/gal
GR_SRC	GR Source Selection	SPULSE-GEN	GAMMA_EXT	

Tool Control Parameters

Company: Noble Energy Inc.

Well: NUGENT LD06-655

Field: Wildcat

County: Weld

State: Colorado

Country: United States of America



SlimPulse - Gamma Ray
1in/100ft Measured Depth



