



Kerr-McGee Oil & Gas Onshore LP

A subsidiary of Anadarko Petroleum Corporation

1099 18th Street
Denver, CO 80202
720-929-6000

September 23, 2016

Matt Lepore
Director, Colorado Oil and Gas Conservation Commission
Department of Natural Resources
The Chancery Building
1120 Lincoln Street, Suite 801
Denver, CO 80203

Re: **30 Day Certification Letter - 318A.e**
LEINWEBER FED 30N-8HZ (DOC # 401109857)
Township 1 North, Range 67 West
Section 11: NENE
Unit Acreage: 400 Acres
Unit Spacing: 1N67W - SEC 11: NENE
1N67W - SEC 12: N2N2
1N66W - SEC 7: N2N2
1N66W - SEC 8: NWNW
Weld County, Colorado

Dear Director Lepore:

Kerr-McGee Oil and Gas Onshore LP (“KMG”) hereby certifies that a thirty (30) day notice has been given by certified mail to all mineral owners in the proposed wellbore spacing unit. We have not received any objections to such well location, proposed spacing unit, or additional producing formation. KMG hereby respectfully requests approval of this boundary well.

If you have any questions or issues regarding this permit, please contact our office.

Sincerely,

Kerr-McGee Oil and Gas Onshore LP

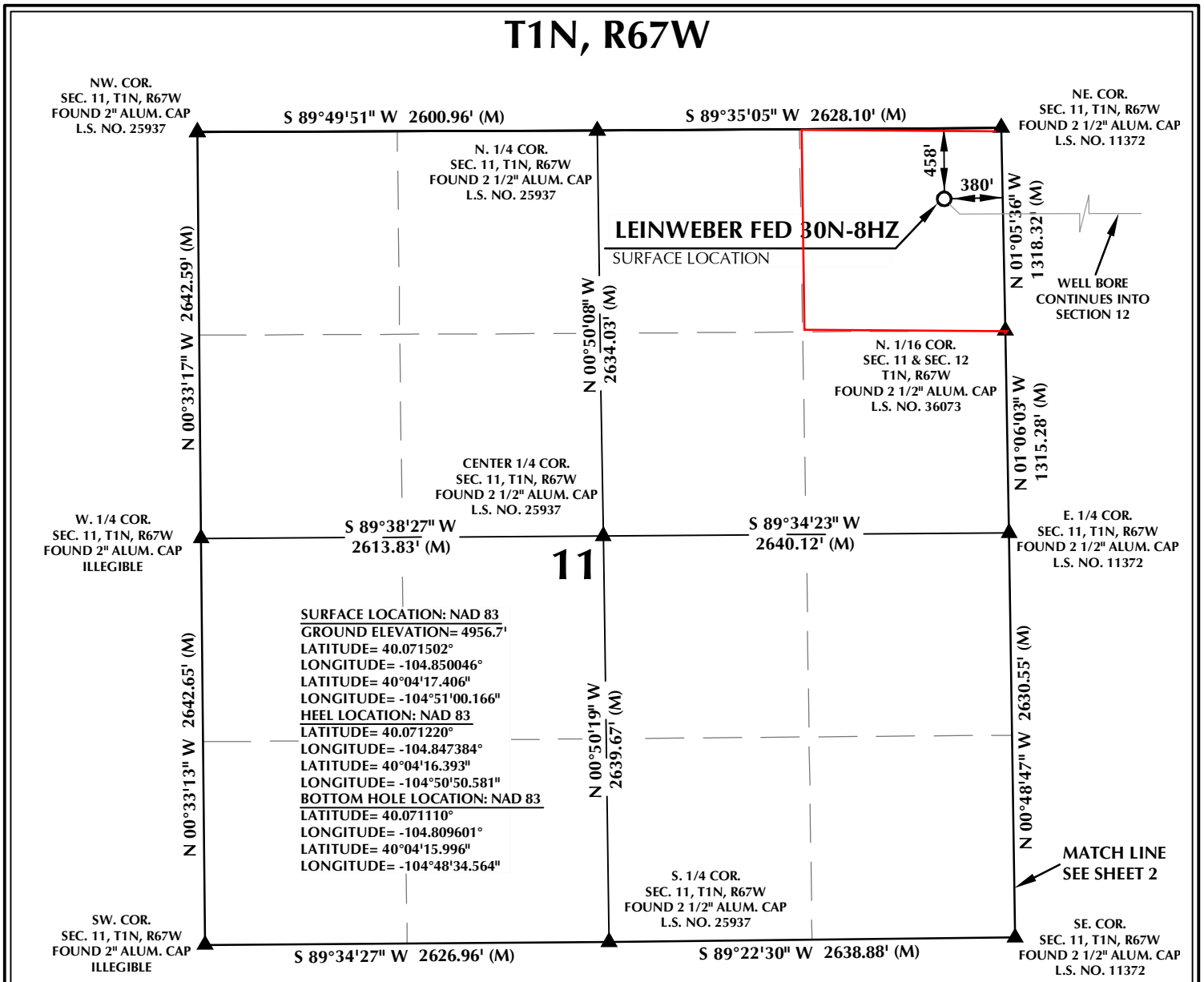
A handwritten signature in blue ink, appearing to read 'Stephanie Madrid'.

Stephanie Madrid
Regulatory Analyst I

Enclosure

PROPOSED SPACING UNIT

T1N, R67W



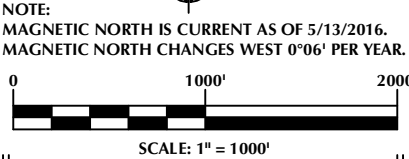
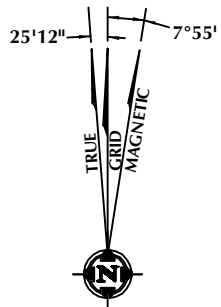
SURFACE LOCATION: NAD 83
 GROUND ELEVATION= 4956.7'
 LATITUDE= 40.071502°
 LONGITUDE= -104.850046°
 LATITUDE= 40°04'17.406"
 LONGITUDE= -104°51'00.166"
HEEL LOCATION: NAD 83
 LATITUDE= 40.071220°
 LONGITUDE= -104.847384°
 LATITUDE= 40°04'16.393"
 LONGITUDE= -104°50'50.581"
BOTTOM HOLE LOCATION: NAD 83
 LATITUDE= 40.071110°
 LONGITUDE= -104.809601°
 LATITUDE= 40°04'15.996"
 LONGITUDE= -104°48'34.564"

CERTIFICATE OF SURVEYOR:

THIS IS TO CERTIFY THAT THE ABOVE PLAT WAS PREPARED FROM FIELD NOTES OF ACTUAL SURVEY MADE BY ME OR UNDER MY SUPERVISION AND THAT THE SAME ARE TRUE AND CORRECT TO THE BEST OF MY KNOWLEDGE AND BELIEF. THIS CERTIFICATE DOES NOT REPRESENT A LAND SURVEY PLAT OR IMPROVEMENT SURVEY PLAT AS DEFINED BY C.R.S. 38-51-102 AND CANNOT BE RELIED UPON TO DETERMINE OWNERSHIP.

Randall K. French
PROFESSIONAL LAND SURVEYOR
 COLORADO REGISTRATION NUMBER 38512
 6/27/16

NOTE:
 ACCORDING TO COLORADO STATE LAW YOU MUST COMMENCE ANY LEGAL ACTION BASED UPON ANY DEFECT IN THIS SURVEY WITHIN THREE YEARS AFTER YOU FIRST DISCOVER SUCH DEFECT. IN NO EVENT MAY ANY ACTION BASED UPON ANY DEFECT IN THIS SURVEY BE COMMENCED MORE THAN TEN YEARS FROM THE DATE ON THE CERTIFICATION SHOWN HEREON.



NOTES:

- ▲ INDICATES SECTION CORNER
- INDICATES CALCULATED CORNER
- ELEVATION BASED ON NAVD88 (GEOID12B)
- BASIS OF BEARING DERIVED FROM COLORADO COORDINATE SYSTEM 1983 NORTH ZONE.
- ALL MEASURED DISTANCES ARE GRID.
- COMBINED SCALE FACTOR: .99972422 CALCULATED FROM THE NW. CORNER OF SECTION 11, T1N, R67W
- OPERATOR: ROB WILSON / PDOP = 1.3
- SEE ADDENDUM TO WELL LOCATION CERTIFICATE FOR EXISTING IMPROVEMENTS WITHIN 500' OF THE WELL PAD.
- WELL FOOTAGES ARE MEASURED AT RIGHT ANGLES TO THE SECTION LINES.
- THE BOTTOM OF HOLE BEARS N89°47'02"E, 10574' FROM THE HEEL LOCATION.

WELL PAD - LEINWEBER FED 31N-8HZ

LEINWEBER FED 30N-8HZ
 WELL LOCATION CERTIFICATE
 458' FNL & 380' FEL NENE (SURFACE)
 LOCATED IN SECTION 11
 559' FNL & 364' FWL NWNW (HEEL)
 LOCATED IN SECTION 12
 T1N, R67W, 6TH P.M.
 678' FNL & 249' FWL NWNW (BOTTOM)
 LOCATED IN SECTION 8
 T1N, R66W, 6TH P.M.
 WELD COUNTY, COLORADO

Kerr-McGee Oil & Gas Onshore L.P.
 1099 18th Street
 Denver, Colorado 80202

609 CONSULTING, LLC

SHERIDAN OFFICE
 1095 Saberton Avenue
 Sheridan, Wyoming 82801
 Phone 307-674-0609

LOVELAND OFFICE
 1635 Foxtrail Drive, Suite 204
 Loveland, Colorado 80538
 Phone 970-776-4331

DRAFTED BY: LMO	CHECKED BY: RKF	SHEET NO: 1 1 OF 4
DATE DRAFTED: 6/27/16	DATE SURVEYED: 4/25/16	
REVISED:	FILE NAME: 16-33	

K:\AMDAR\2016\2016_33_LEINWEBER_T1N_R67W_11_12\PLAT\15\LEINWEBER_FED_31N-8HZ_P1AT.dwg, 6/29/2016 10:45:02 AM, lsb

PROPOSED SPACING UNIT

T1N, R67W

N. 1/4 COR.
SEC. 12, T1N, R67W
FOUND 2 1/2" ALUM. CAP
L.S. NO. 11372

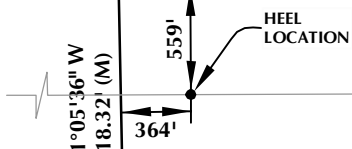
NE. COR.
SEC. 12, T1N, R67W
FOUND 3 1/4" ALUM. CAP
L.S. NO. 13155

NW. COR.
SEC. 12, T1N, R67W
FOUND 2 1/2" ALUM. CAP
L.S. NO. 11372

S 89°47'20" W 2620.77' (M)

S 89°27'26" W 2646.38' (M)

N 89°47'02" E 10574' GRID
S 89°47'46" E TRUE
N 81°52'02" E MAGNETIC



N. 1/16 COR.
SEC. 11 & SEC. 12
T1N, R67W
FOUND 2 1/2" ALUM. CAP
L.S. NO. 36073

NW. 1/16 COR. 1312.22' (M)
SEC. 12, T1N, R67W
FOUND 2 1/2" ALUM. CAP
P.L.S. NO. 38046

CN. 1/16 COR.
SEC. 12, T1N, R67W
FOUND 2" ALUM. CAP
L.S. NO. 11372

CE. 1/16 COR.
SEC. 12, T1N, R67W
FOUND 2" ALUM. CAP
WITNESS COR. 25' SOUTH OF
CORNER POSITION
L.S. NO. 11372

12
CENTER 1/4 COR.
SEC. 12, T1N, R67W
SET 2 1/2" ALUM. CAP
P.L.S. NO. 38512

W. 1/4 COR.
SEC. 12, T1N, R67W
FOUND 2 1/2" ALUM. CAP
L.S. NO. 11372

S 89°40'27" W 1311.41' (M)

S 89°38'27" W 1305.93' (M)

S 89°42'32" W 1323.39' (M)

S 89°40'36" W 1317.91' (M)

CW. 1/16 COR.
SEC. 12, T1N, R67W
FOUND 2" ALUM. CAP
WITNESS COR. 10' NORTH OF
CORNER POSITION
L.S. NO. 11372

SURFACE LOCATION: NAD 83
GROUND ELEVATION= 4956.7'
LATITUDE= 40.071502°
LONGITUDE= -104.850046°
LATITUDE= 40°04'17.406"
LONGITUDE= -104°51'00.166"
HEEL LOCATION: NAD 83
LATITUDE= 40.071220°
LONGITUDE= -104.847384°
LATITUDE= 40°04'16.393"
LONGITUDE= -104°50'50.581"
BOTTOM HOLE LOCATION: NAD 83
LATITUDE= 40.071110°
LONGITUDE= -104.809601°
LATITUDE= 40°04'15.996"
LONGITUDE= -104°48'34.564"

MATCH LINE
SEE SHEET 1

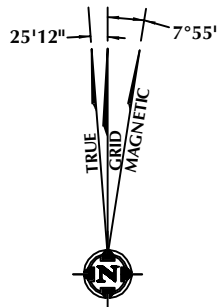
MATCH LINE
SEE SHEET 3

SW. COR.
SEC. 12, T1N, R67W
FOUND 2 1/2" ALUM. CAP
L.S. NO. 11372

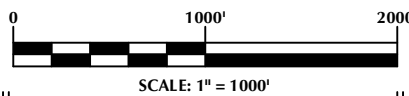
S 89°29'55" W 2635.51' (M)

S 89°29'33" W 2617.13' (M)

SE. COR.
SEC. 12, T1N, R67W
FOUND 2 1/2" ALUM. CAP
L.S. NO. 11372



NOTE:
MAGNETIC NORTH IS CURRENT AS OF 5/13/2016.
MAGNETIC NORTH CHANGES WEST 0°06' PER YEAR.



SCALE: 1" = 1000'

CERTIFICATE OF SURVEYOR:

THIS IS TO CERTIFY THAT THE ABOVE PLAT WAS PREPARED FROM FIELD NOTES OF ACTUAL SURVEY MADE BY ME OR UNDER MY SUPERVISION AND THAT THE SAME ARE TRUE AND CORRECT TO THE BEST OF MY KNOWLEDGE AND BELIEF. THIS CERTIFICATE DOES NOT REPRESENT A LAND SURVEY PLAT OR IMPROVEMENT SURVEY PLAT AS DEFINED BY C.R.S. 38-51-102 AND CANNOT BE RELIED UPON TO DETERMINE OWNERSHIP.

Randall K. French
PROFESSIONAL LAND SURVEYOR
38512
6/27/16

RANDALL K. FRENCH
PROFESSIONAL LAND SURVEYOR
COLORADO REGISTRATION NUMBER 38512

NOTICE:
ACCORDING TO COLORADO STATE LAW YOU MUST COMMENCE ANY LEGAL ACTION BASED UPON ANY DEFECT IN THIS SURVEY WITHIN THREE YEARS AFTER YOU FIRST DISCOVER SUCH DEFECT. IN NO EVENT MAY ANY ACTION BASED UPON ANY DEFECT IN THIS SURVEY BE COMMENCED MORE THAN TEN YEARS FROM THE DATE ON THE CERTIFICATION SHOWN HEREON.

NOTES:

- ▲ INDICATES SECTION CORNER
- INDICATES CALCULATED CORNER
- ELEVATION BASED ON NAVD88 (GEOID12B)
- BASIS OF BEARING DERIVED FROM COLORADO COORDINATE SYSTEM 1983 NORTH ZONE.
- ALL MEASURED DISTANCES ARE GRID.
COMBINED SCALE FACTOR: .99972422 CALCULATED FROM THE NW. CORNER OF SECTION 11, T1N, R67W
OPERATOR: ROB WILSON / PDOP = 1.3
- SEE ADDENDUM TO WELL LOCATION CERTIFICATE FOR EXISTING IMPROVEMENTS WITHIN 500' OF THE WELL PAD.
- WELL FOOTAGES ARE MEASURED AT RIGHT ANGLES TO THE SECTION LINES.
- THE BOTTOM OF HOLE BEARS N89°47'02"E, 10574' FROM THE HEEL LOCATION.

WELL PAD - LEINWEBER FED 31N-8HZ

LEINWEBER FED 30N-8HZ
WELL LOCATION CERTIFICATE
458' FNL & 380' FEL NENE (SURFACE)
LOCATED IN SECTION 11
559' FNL & 364' FWL NWNW (HEEL)
LOCATED IN SECTION 12
T1N, R67W, 6TH P.M.
678' FNL & 249' FWL NWNW (BOTTOM)
LOCATED IN SECTION 8
T1N, R66W, 6TH P.M.
WELD COUNTY, COLORADO

**Kerr-McGee Oil &
Gas Onshore L.P.**
1099 18th Street
Denver, Colorado 80202



CONSULTING, LLC

SHERIDAN OFFICE
1095 Saberton Avenue
Sheridan, Wyoming 82801
Phone 307-674-0609

LOVELAND OFFICE
1635 Foxtrail Drive, Suite 204
Loveland, Colorado 80538
Phone 970-776-4331

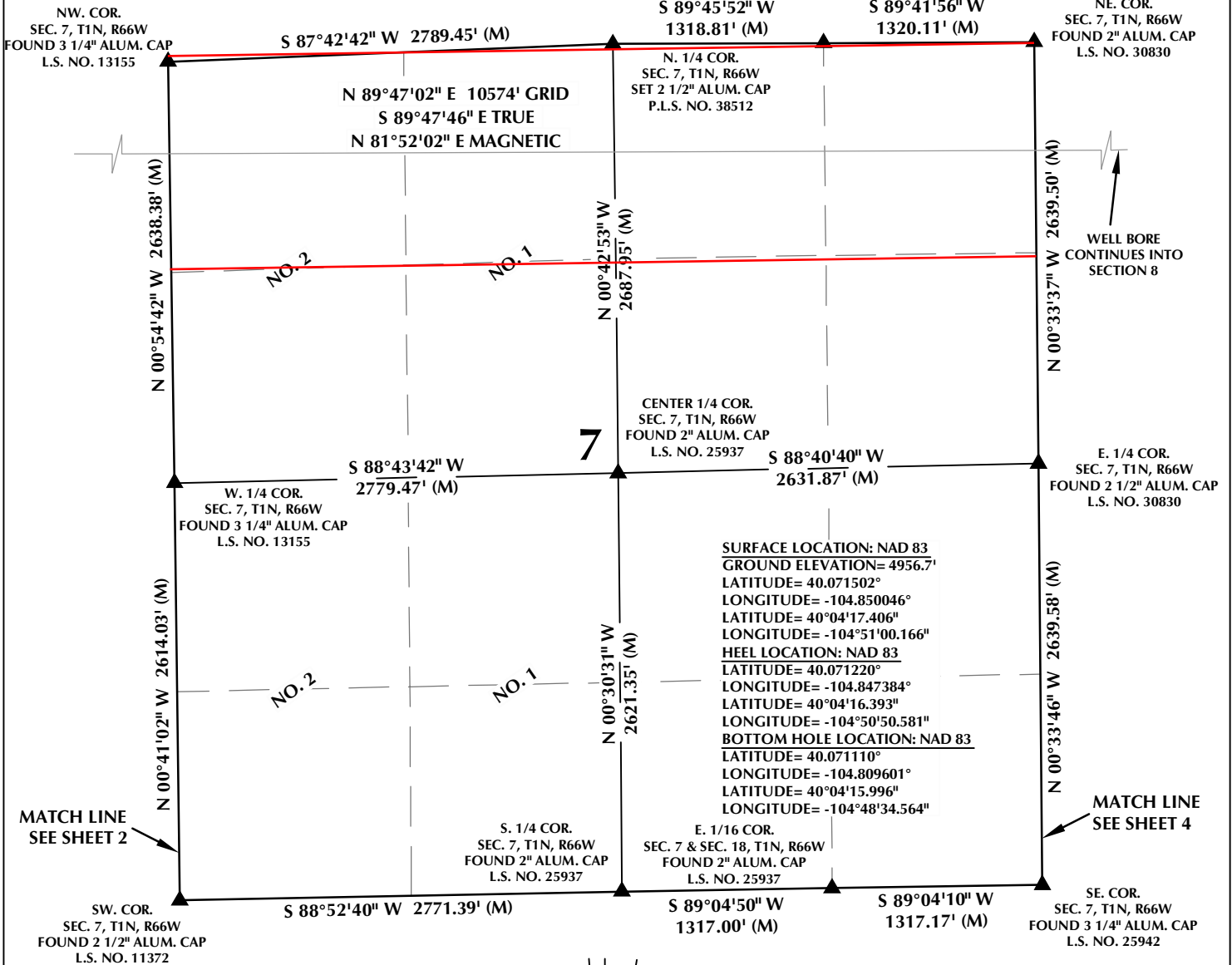
DRAFTED BY:	LMO	CHECKED BY:	RKF	SHEET NO:
DATE DRAFTED:	6/27/16	DATE SURVEYED:	4/25/16	2
REVISED:		FILE NAME:	16-33	2 OF 4

K:\AMDAR\2016\2016_33_LEINWEBER_T1N_R67W_11_12\PLAT\51LEINWEBER FED 31N-8HZ PLAT.dwg, 6/29/2016 10:45:06 AM, lsb

PROPOSED SPACING UNIT

T1N, R66W

E. 1/16 COR.
SEC. 6 & SEC. 7, T1N, R66W
FOUND 2" ALUM. CAP
L.S. NO. 25937

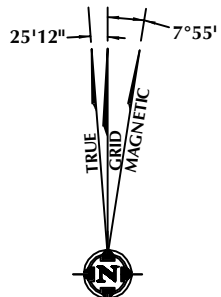


CERTIFICATE OF SURVEYOR:

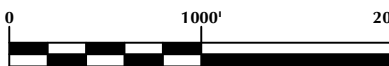
THIS IS TO CERTIFY THAT THE ABOVE PLAT WAS PREPARED FROM FIELD NOTES OF ACTUAL SURVEY MADE BY ME OR UNDER MY SUPERVISION AND THAT THE SAME ARE TRUE AND CORRECT TO THE BEST OF MY KNOWLEDGE AND BELIEF. THIS CERTIFICATE DOES NOT REPRESENT A LAND SURVEY PLAT OR IMPROVEMENT SURVEY PLAT AS DEFINED BY C.R.S. 38-51-102 AND CANNOT BE RELIED UPON TO DETERMINE OWNERSHIP.

Randall K. French
RANDALL K. FRENCH
 PROFESSIONAL LAND SURVEYOR
 COLORADO REGISTRATION NUMBER 38512
 6/27/16

NOTE:
 ACCORDING TO COLORADO STATE LAW YOU MUST COMMENCE ANY LEGAL ACTION BASED UPON ANY DEFECT IN THIS SURVEY WITHIN THREE YEARS AFTER YOU FIRST DISCOVER SUCH DEFECT. IN NO EVENT MAY ANY ACTION BASED UPON ANY DEFECT IN THIS SURVEY BE COMMENCED MORE THAN TEN YEARS FROM THE DATE ON THE CERTIFICATION SHOWN HEREON.



NOTE:
 MAGNETIC NORTH IS CURRENT AS OF 5/13/2016.
 MAGNETIC NORTH CHANGES WEST 0°06' PER YEAR.



SCALE: 1" = 1000'

NOTES:

- ▲ INDICATES SECTION CORNER
- INDICATES CALCULATED CORNER
- ELEVATION BASED ON NAVD88 (GEOID12B)
- BASIS OF BEARING DERIVED FROM COLORADO COORDINATE SYSTEM 1983 NORTH ZONE.
- ALL MEASURED DISTANCES ARE GRID.
COMBINED SCALE FACTOR: .99972422 CALCULATED FROM THE NW CORNER OF SECTION 11, T1N, R67W
- OPERATOR: ROB WILSON / PDOP = 1.3
- SEE ADDENDUM TO WELL LOCATION CERTIFICATE FOR EXISTING IMPROVEMENTS WITHIN 500' OF THE WELL PAD.
- WELL FOOTAGES ARE MEASURED AT RIGHT ANGLES TO THE SECTION LINES.
- NO. 1 & NO. 2 AS SHOWN HEREON ARE GOVERNMENT LOTS 1 & 2 OF THE ORIGINAL GLO SURVEY.
- THE BOTTOM OF HOLE BEARS N89°47'02"E, 10574' FROM THE HEEL LOCATION.

WELL PAD - LEINWEBER FED 31N-8HZ

LEINWEBER FED 30N-8HZ
 WELL LOCATION CERTIFICATE
 458' FNL & 380' FEL NENE (SURFACE)
 LOCATED IN SECTION 11
 559' FNL & 364' FWL NWNW (HEEL)
 LOCATED IN SECTION 12
 T1N, R67W, 6TH P.M.
 678' FNL & 249' FWL NWNW (BOTTOM)
 LOCATED IN SECTION 8
 T1N, R66W, 6TH P.M.
 WELD COUNTY, COLORADO

Kerr-McGee Oil & Gas Onshore L.P.
 1099 18th Street
 Denver, Colorado 80202



CONSULTING, LLC

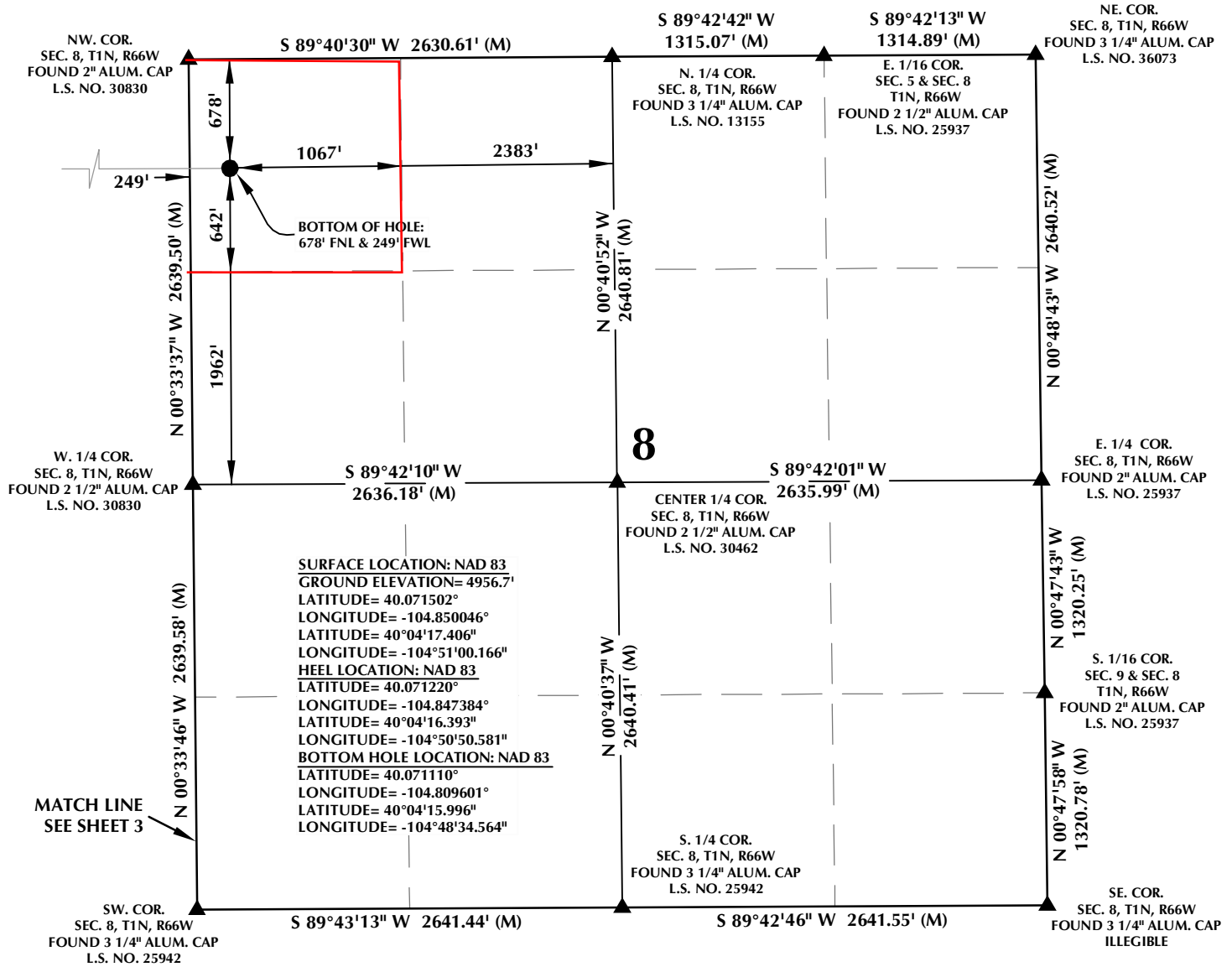
SHERIDAN OFFICE
 1095 Saberton Avenue
 Sheridan, Wyoming 82801
 Phone 307-674-0609

LOVELAND OFFICE
 1635 Foxtrail Drive, Suite 204
 Loveland, Colorado 80538
 Phone 970-776-4331

DRAFTED BY:	LMO	CHECKED BY:	RKF	SHEET NO: 3 3 OF 4
DATE DRAFTED:	6/27/16	DATE SURVEYED:	4/25/16	
REVISED:		FILE NAME:	16-33	

PROPOSED SPACING UNIT

T1N, R66W

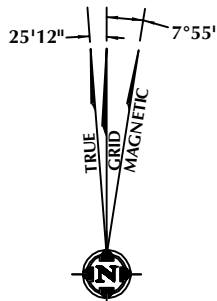


CERTIFICATE OF SURVEYOR:

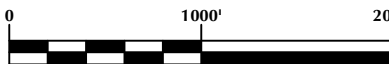
THIS IS TO CERTIFY THAT THE ABOVE PLAT WAS PREPARED FROM FIELD NOTES OF ACTUAL SURVEY MADE BY ME OR UNDER MY SUPERVISION AND THAT THE SAME ARE TRUE AND CORRECT TO THE BEST OF MY KNOWLEDGE AND BELIEF. THIS CERTIFICATE DOES NOT REPRESENT A LAND SURVEY PLAT OR IMPROVEMENT SURVEY PLAT AS DEFINED BY C.R.S. 38-51-102 AND CANNOT BE RELIED UPON TO DETERMINE OWNERSHIP.

Randall K. French
PROFESSIONAL LAND SURVEYOR
 RANDALL K. FRENCH
 PROFESSIONAL LAND SURVEYOR
 COLORADO REGISTRATION NUMBER 38512
 6/27/16

NOTICE:
 ACCORDING TO COLORADO STATE LAW YOU MUST COMMENCE ANY LEGAL ACTION BASED UPON ANY DEFECT IN THIS SURVEY WITHIN THREE YEARS AFTER YOU FIRST DISCOVER SUCH DEFECT. IN NO EVENT MAY ANY ACTION BASED UPON ANY DEFECT IN THIS SURVEY BE COMMENCED MORE THAN TEN YEARS FROM THE DATE ON THE CERTIFICATION SHOWN HEREON.



NOTE:
 MAGNETIC NORTH IS CURRENT AS OF 5/13/2016.
 MAGNETIC NORTH CHANGES WEST 0°06' PER YEAR.



SCALE: 1" = 1000'

NOTES:

- ▲ INDICATES SECTION CORNER
- INDICATES CALCULATED CORNER
- ELEVATION BASED ON NAVD88 (GEOID12B)
- BASIS OF BEARING DERIVED FROM COLORADO COORDINATE SYSTEM 1983 NORTH ZONE.
- ALL MEASURED DISTANCES ARE GRID.
- COMBINED SCALE FACTOR: .99972422 CALCULATED FROM THE NW. CORNER OF SECTION 11, T1N, R67W
- OPERATOR: ROB WILSON / PDOP = 1.3
- SEE ADDENDUM TO WELL LOCATION CERTIFICATE FOR EXISTING IMPROVEMENTS WITHIN 500' OF THE WELL PAD.
- WELL FOOTAGES ARE MEASURED AT RIGHT ANGLES TO THE SECTION LINES.
- THE BOTTOM OF HOLE BEARS N89°47'02"E, 10574' FROM THE HEEL LOCATION.

WELL PAD - LEINWEBER FED 31N-8HZ

LEINWEBER FED 30N-8HZ
 WELL LOCATION CERTIFICATE
 458' FNL & 380' FEL NENE (SURFACE)
 LOCATED IN SECTION 11
 559' FNL & 364' FWL NWNW (HEEL)
 LOCATED IN SECTION 12
 T1N, R67W, 6TH P.M.
 678' FNL & 249' FWL NWNW (BOTTOM)
 LOCATED IN SECTION 8
 T1N, R66W, 6TH P.M.
 WELD COUNTY, COLORADO

**Kerr-McGee Oil &
 Gas Onshore L.P.**
 1099 18th Street
 Denver, Colorado 80202



CONSULTING, LLC

SHERIDAN OFFICE
 1095 Saberton Avenue
 Sheridan, Wyoming 82801
 Phone 307-674-0609

LOVELAND OFFICE
 1635 Foxtrail Drive, Suite 204
 Loveland, Colorado 80538
 Phone 970-776-4331

DRAFTED BY: LMO	CHECKED BY: RKF	SHEET NO: 4 4 OF 4
DATE DRAFTED: 6/27/16	DATE SURVEYED: 4/25/16	
REVISED:	FILE NAME: 16-33	

K:\ADARKO\2016\2016_33_LEINWEBER_T1N_R67W_11_12\PLAT\51LEINWEBER_FED_31N-8HZ_P1AT.dwg, 6/29/2016 10:45:16 AM, lsb